

### Full Load Tested

Every generator is 100% load tested



### DSE7310 Controller

Provides immediate performance information



### Coolant Heater

Provides immediate performance information



### Battery Charger

Standard 10A 12/24V Automatic Charger



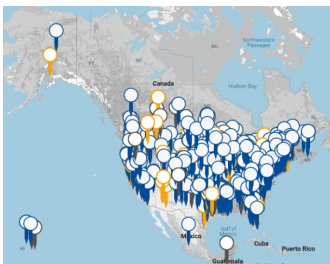
### Certifications

The design, construction and performance of our generators conform to UL and CSA standards



### Service & Support

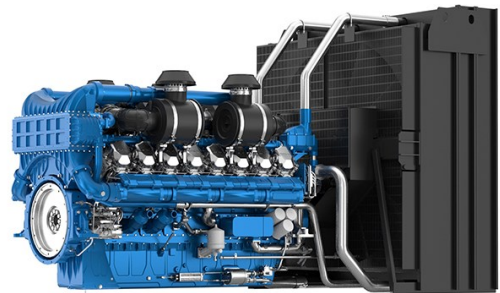
Dealer network located throughout North America



### Rugged Design



### Baudouin Industrial Engine



### Cummins Industrial Genend



## ELECTRICAL

VOLTS	POWER FACTOR	STANDBY			PRIME			CIRCUIT BREAKER
		WATTS	KVA	AMPS	WATTS	KVA	AMPS	
120/208V 3-PH	0.8	1,750,000	2187	6,071	1,575,000	1968	5,464	6000
120/240V 3-PH	0.8	1,750,000	2187	5,262	1,575,000	1968	4,736	6000
277/480V 3-PH	0.8	1,750,000	2187	2631	1,575,000	1968	2,368	3200
347/600V 3-PH	0.8	1,750,000	2187	2,104	1,575,000	1968	1,894	2500

## ENGINE

ENGINE BRAND	BAUDOIN
ENGINE MODEL	16M33G4D2/6
EMISSIONS	EPA TIER II
ENGINE STARTER	24VDC
ENGINE SPEED	1800 RPM
ENGINE CYLINDERS	16
ENGINE (W/FAN) HP/kWm	2539/1893
FREQUENCY (1)	60HZ
GOVERNOR	ELECTRONIC
FLYWHEEL	SAE No.0
ROTATION	CCW
ASPIRATION	TURBO CAC
COOLANT W/ RADIATOR	143.18 GAL
BORE/STROKE	150mm X 185mm
DISPLACEMENT	52.3L
RECOMMENDED OIL (2)	5W-40 SAE
OIL CAPACITY	45.17 GAL
COMBUSTION SYSTEM	DIRECT INJECTION
COMPRESSION RATIO	15:1
FAN TYPE	PUSHER
INTAKE AIR CONSUMPTION	5,237 CFM
RADIATOR COOLING FLOW	82,636 CFM
EXHAUST FLOW AT TURBINE	16,597 CFM
STARTING TEMP W/BLOCK HEATER	-13°F

NOTES: (1) Steady state frequency regulation. (2) The recommended oil is for normal applications. See operator's manual for the recommended oil for your needs.

## DBA @ 7 METERS

FULL LOAD (OPEN UNIT)	99
FULL LOAD (HOUSED LEVEL 2)	85

## ELECTRICAL

MOTOR STARTING (CODE G)	1300 HP
TOTAL HARMONIC DISTORTION	< 5%
FLOATING NEUTRAL	YES
FORKLIFT POCKETS	NO
ASSEMBLED IN	NORTH AMERICA
EPA APPROVED	ESP
<b>CERTIFICATIONS</b>	
	C/UL Yes
	ISO 9001 Yes
	NFPA110 Yes
UNIT WARRANTY STANDBY(1)	2 YEARS/ 1000HRS

NOTES: (1) For more generator warranty, see operator's manual.

## GENERATOR END

WINDING	6 LEAD
WIDING NUMBER	311
VOLTAGE REGULATION	AVR +/- 1%
AVR TYPE	MX321
PMG	STANDARD
TEMPERATURE RISE	125/40°C
BRUSHLESS	YES
ROTOR	2/3 PITCH
WINDINGS	100% COPPER
STATOR WINDING	DOUBLE LAYER LAP
COUPLING	DIRECT/FLEX DISC
BEARINGS	SINGLE (MAINTENANCE FREE)
EFFICIENCY PEAK	95
INSULATION	CLASS H
INGRESS PROTECTION	IP23

## BLOCK HEATER

VOLTS		120
WATTS		3,000
AMPS		25
THERMOSTAT	ON	100°F
	OFF	120°F

## DERATES

ABOVE SEA LEVEL		
>1200FT		4.5% EVERY 1,000 FT
MAX OPERATING		122°F
TEMPERATURE		1.5% EVERY 10°F OVER 77°F AIR INLET

## FUEL CONSUMPTION

Load	Gal/Hr	L/Hr
100%	127.7	483.4
75%	92.38	349.7
50%	62.82	237.8
25%	34.34	130

## OPTIONAL ACCESSORIES

START BATTERIES	
BATTERY HEATER	
GENERATOR STRIP HEATER	
MIMIC PANEL	
NFPA 110 LEVEL 1 UPGRADE	
REMOTE MONITORING	
PARALLELING PANEL DSE8610	
SECONDARY BREAKER	

## DSE 7310 CONTROLLER

ENGINE DISPLAY / PROTECTION	
ENGINE RPM	YES
LOW OIL PRESSURE	YES
HIGH COOLANT TEMP	YES
LOW COOLANT	YES
OVER/UNDER SPEED	YES
OVER CRANK	YES
CAN ECU SHUTDOWN	YES
ENGINE MAINTENANCE CODES	YES
GENSET DISPLAY / PROTECTION	
VOLTAGE (L-N & L-L)	YES
OVER/UNDER VOLTAGE	YES
FREQUENCY	YES
OVER/UNDER FREQUENCY	YES
AMP DISPLAY / SHUTDOWN	YES
PHASE IMBALANCE	FIELD ENABLED
KW, KVA, KVAR DISPLAY	YES
KWH, KVAH, KVARH DISPLAY	YES
GENERATOR PHASE SEQUENCE	OPTIONAL

## BATTERY

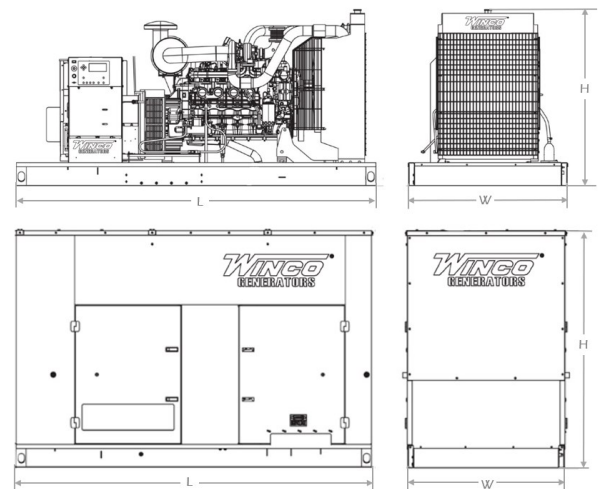
DC SYSTEM	24V
BATTERY RACK/CABLE	INCLUDED
BATTERY CHARGER	10 AMP
REQUIRED BATTERIES(1)	GROUP 8D 1200 CCA

NOTES: (1) Qty. 2 batteries are required. Batteries are not included.

## DIMENSIONS

DIMENSIONS (L x W x H)	378" x 136" x 144"
WEIGHT	
OPEN	LBS
HOUSED	LBS
FREIGHT CLASS	70

NOTES: Shipping dimensions are for a housed Level 2 unit.



## ADDITIONAL DISPLAYS / PROTECTIONS

EXTERNAL E-STOP	FIELD INSTALLED
BATTERY VOLTAGE	YES
BATTERY OVER/UNDER VOLT-	YES
COMMUNICATIONS	
USB CONNECTABLE	YES
RS232/RS485	YES
REMOTE DISPLAY PANEL	YES
DSE WEB NET	YES
ADDITIONAL FEATURES	
AUDIBLE ALARM	YES
ENGINE EXERCISER	DISABLED
MAINTENANCE INTERVAL TIMER	DISABLED
LOAD SHEDDING/DUMMY	DISABLED
CONFIGURABLE INPUTS	4 (EXPANDABLE)
CONFIGURABLE OUTPUTS	4 (EXPANDABLE)
EVEN LOG	250

Specifications are subject to change without notice.