

Full Load Tested

Every generator is 100% load tested



DSE7310 Controller

Provides immediate performance information



Coolant Heater

Provides immediate performance information



Battery Charger

Standard 10A 12/24V Automatic Charger



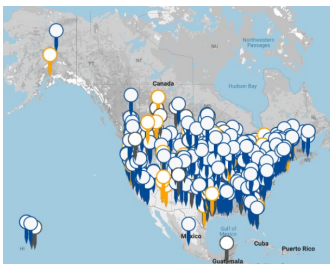
Certifications

The design, construction and performance of our generators conform to UL and CSA standards



Service & Support

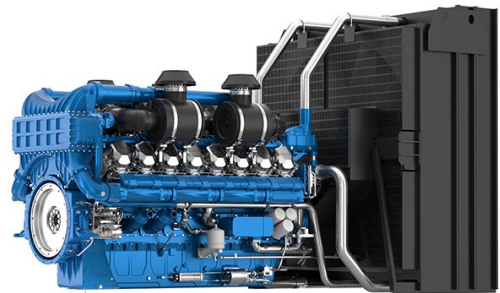
Dealer network located throughout North America



Rugged Design



Baudouin Industrial Engine



Cummins Industrial Genend



ELECTRICAL

VOLTS	POWER FACTOR	STANDBY			PRIME			CIRCUIT BREAKER
		WATTS	KVA	AMPS	WATTS	KVA	AMPS	
120/208V 3-PH	0.8	1,500,000	1875	5,204	1,350,000	1687	4,684	6000
120/240V 3-PH	0.8	1,500,000	1875	4,510	1,350,000	1687	4,059	5000
277/480V 3-PH	0.8	1,500,000	1875	2,225	1,350,000	1687	2,029	2500
347/600V 3-PH	0.8	1,500,000	1875	1,804	1,350,000	1687	1,623	2500

ENGINE

ENGINE BRAND	BAUDOIN
ENGINE MODEL	16M33G2D2/6
EMISSIONS	EPA TIER II
ENGINE STARTER	24VDC
ENGINE SPEED	1800 RPM
ENGINE CYLINDERS	16
ENGINE (W/FAN) HP/kWm	2152/1604
FREQUENCY (1)	60HZ
GOVERNOR	ELECTRONIC
FLYWHEEL	SAE No.0
ROTATION	CCW
ASPIRATION	TURBO CAC
COOLANT W/ RADIATOR	143.18 GAL
BORE/STROKE	150mm X 185mm
DISPLACEMENT	52.3L
RECOMMENDED OIL (2)	5W-40 SAE
OIL CAPACITY	45.17 GAL
COMBUSTION SYSTEM	DIRECT INJECTION
COMPRESSION RATIO	15:1
FAN TYPE	PUSHER
INTAKE AIR CONSUMPTION	5,237 CFM
RADIATOR COOLING FLOW	82,636 CFM
EXHAUST FLOW AT TURBINE	16,597 CFM
STARTING TEMP W/BLOCK HEATER	-13°F

NOTES: (1) Steady state frequency regulation. (2) The recommended oil is for normal applications. See operator's manual for the recommended oil for your needs.

DBA @ 7 METERS

FULL LOAD (OPEN UNIT)	99
FULL LOAD (HOUSED LEVEL 2)	85

ELECTRICAL

MOTOR STARTING (CODE G)	1100 HP
TOTAL HARMONIC DISTORTION	< 5%
FLOATING NEUTRAL	YES
FORKLIFT POCKETS	NO
ASSEMBLED IN	NORTH AMERICA
EPA APPROVED	ESP
CERTIFICATIONS	
	C/UL Yes
	ISO 9001 Yes
	NFPA110 Yes
UNIT WARRANTY STANDBY(1)	2 YEARS/ 1000HRS

NOTES: (1) For more generator warranty, see operator's manual.

GENERATOR END

WINDING	6 LEAD
WIDING NUMBER	311
VOLTAGE REGULATION	AVR +/- 1%
AVR TYPE	MX321
PMG	STANDARD
TEMPERATURE RISE	125/40°C
BRUSHLESS	YES
ROTOR	2/3 PITCH
WINDINGS	100% COPPER
STATOR WINDING	DOUBLE LAYER LAP
COUPLING	DIRECT/FLEX DISC
BEARINGS	SINGLE (MAINTENANCE FREE)
EFFICIENCY PEAK	95
INSULATION	CLASS H
INGRESS PROTECTION	IP23

BLOCK HEATER

VOLTS	120
WATTS	3,000
AMPS	25
THERMOSTAT	
	ON 100°F
	OFF 120°F

DERATES

ABOVE SEA LEVEL	
>1200FT	4.5% EVERY 1,000 FT
MAX OPERATING	122°F
TEMPERATURE	1.5% EVERY 10°F OVER 77°F AIR INLET

FUEL CONSUMPTION

Load	Gal/Hr	L/Hr
100%	112.85	427.2
75%	80.81	305.9
50%	54.81	207.5
25%	30.67	116.1

OPTIONAL ACCESSORIES

START BATTERIES	
BATTERY HEATER	
GENERATOR STRIP HEATER	
MIMIC PANEL	
NFPA 110 LEVEL 1 UPGRADE	
REMOTE MONITORING	
PARALLELING PANEL DSE8610	
SECONDARY BREAKER	

DSE 7310 CONTROLLER

ENGINE DISPLAY / PROTECTION	
ENGINE RPM	YES
LOW OIL PRESSURE	YES
HIGH COOLANT TEMP	YES
LOW COOLANT	YES
OVER/UNDER SPEED	YES
OVER CRANK	YES
CAN ECU SHUTDOWN	YES
ENGINE MAINTENANCE CODES	YES
GENSET DISPLAY / PROTECTION	
VOLTAGE (L-N & L-L)	YES
OVER/UNDER VOLTAGE	YES
FREQUENCY	YES
OVER/UNDER FREQUENCY	YES
AMP DISPLAY / SHUTDOWN	YES
PHASE IMBALANCE	FIELD ENABLED
KW, KVA, KVAR DISPLAY	YES
KWH, KVAH, KVARH DISPLAY	YES
GENERATOR PHASE SEQUENCE	OPTIONAL

BATTERY

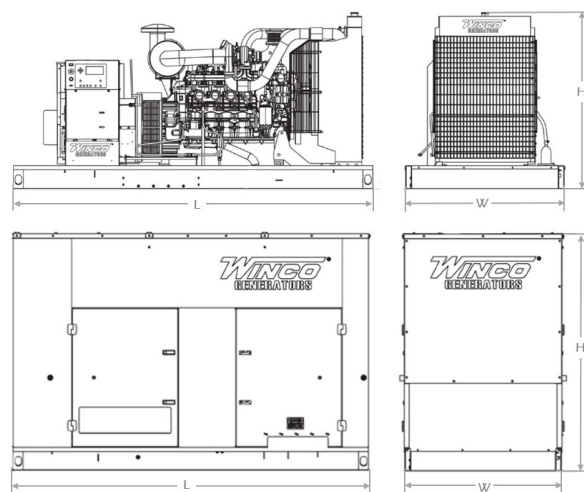
DC SYSTEM	24V
BATTERY RACK / CABLE	INCLUDED
BATTERY CHARGER	10 AMP
REQUIRED BATTERIES (1)	GROUP 8D 1200 CCA

NOTES: (1) Qty. 2 batteries are required. Batteries are not included.

DIMENSIONS

DIMENSIONS (L x W x H)	378" x 136" x 144"
WEIGHT	
OPEN	LBS
HOUSED	LBS
FREIGHT CLASS	70

NOTES: Shipping dimensions are for a housed Level 2 unit.



ADDITIONAL DISPLAYS / PROTECTIONS

EXTERNAL E-STOP	FIELD INSTALLED
BATTERY VOLTAGE	YES
BATTERY OVER/UNDER VOLTAGE	YES
COMMUNICATIONS	
USB CONNECTABLE	YES
RS232/RS485	YES
REMOTE DISPLAY PANEL	YES
DSE WEB NET	YES

ADDITIONAL FEATURES

AUDIBLE ALARM	YES
ENGINE EXERCISER	DISABLED
MAINTENANCE INTERVAL TIMER	DISABLED
LOAD SHEDDING / DUMMY	DISABLED
CONFIGURABLE INPUTS	4 (EXPANDABLE)
CONFIGURABLE OUTPUTS	4 (EXPANDABLE)
EVEN LOG	250

Specifications are subject to change without notice.