

Full Load Tested

Every generator is 100% load tested



DSE7310 Controller

Provides immediate performance information



Coolant Heater

Provides immediate performance information



Battery Charger

Standard 10A 12/24V Automatic Charger



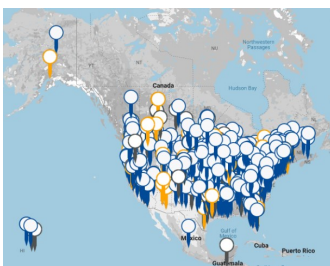
Certifications

The design, construction and performance of our generators conform to UL and CSA standards



Service & Support

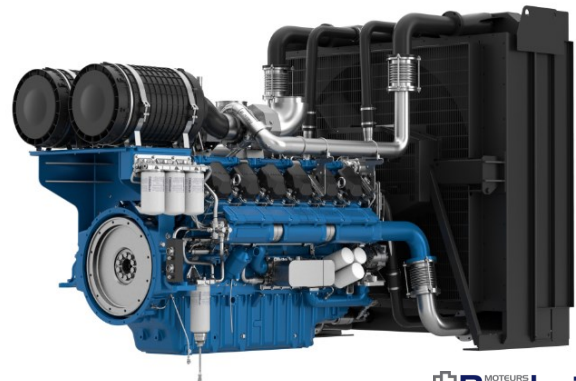
Dealer network located throughout North America



Rugged Design



Baudouin Industrial Engine



Cummins Industrial Genend



ELECTRICAL

VOLTS	POWER FACTOR	STANDBY			PRIME			CIRCUIT BREAKER
		WATTS	KVA	AMPS	WATTS	KVA	AMPS	
120/208V 3-PH	0.8	1,250,000	1,562.5	4,337	1,125,000	1,406.25	3,903	5000
120/240V 3-PH	0.8	1,250,000	1,562.5	3,758	1,125,000	1,406.25	3,382	4000
277/480V 3-PH	0.8	1,250,000	1,562.5	1,879	1,125,000	1,406.25	1,691	2000
347/600V 3-PH	0.8	1,250,000	1,562.5	1,503	1,125,000	1,406.25	1,353	1250

ENGINE

ENGINE BRAND	BAUDOIN
ENGINE MODEL	12M33G12D2/6
EMISSIONS	EPA TIER II
ENGINE STARTER	24VDC
ENGINE SPEED	1800 RPM
ENGINE CYLINDERS	12
ENGINE (W/FAN) HP/kWm	1842.5/1375
FREQUENCY (1)	60HZ
GOVERNOR	ELECTRONIC
FLYWHEEL	SAE No.0
ROTATION	CCW
ASPIRATION	TURBO CAC
COOLANT W/ RADIATOR	49.66 GAL

BORE/STROKE	150mm X 185mm
DISPLACEMENT	39.2L
RECOMMENDED OIL (2)	5W-40 SAE
OIL CAPACITY	42.26 GAL
COMBUSTION SYSTEM	DIRECT INJECTION
COMPRESSION RATIO	15:1
FAN TYPE	PUSHER
INTAKE AIR CONSUMPTION	3715 CFM
RADIATOR COOLING FLOW	74160 CFM
EXHAUST FLOW AT TURBINE	12,095 CFM

STARTING TEMP W/BLOCK HEATER	-13°F
------------------------------	-------

NOTES: (1) Steady state frequency regulation. (2) The recommended oil is for normal applications. See operator's manual for the recommended oil for your needs.

DBA @ 7 METERS

FULL LOAD (OPEN UNIT)	100
FULL LOAD (HOUSED LEVEL 2)	85

ELECTRICAL

MOTOR STARTING (CODE G)	830 HP
TOTAL HARMONIC DISTORTION	< 5%
FLOATING NEUTRAL	YES
FORKLIFT POCKETS	NO
ASSEMBLED IN	NORTH AMERICA
EPA APPROVED	ESB

CERTIFICATIONS

C/UL	Yes
ISO 9001	Yes
NFPA110	Yes
UNIT WARRANTY STANDBY(1)	2 YEARS/ 1000HRS

NOTES: (1) For more generator warranty, see operator's manual.

GENERATOR END

WINDING	12 LEAD
WIDING NUMBER	311
VOLTAGE REGULATION	AVR +/- 1%
AVR TYPE	MX321
PMG	STANDARD
TEMPERATURE RISE	125/40°C
BRUSHLESS	YES
ROTOR	2/3 PITCH
WINDINGS	100% COPPER

STATOR WINDING	DOUBLE LAYER LAP
COUPLING	DIRECT/FLEX DISC
BEARINGS	SINGLE (MAINTENANCE FREE)
EFFICIENCY PEAK	95

INSULATION	CLASS H
------------	---------

INGRESS PROTECTION	IP23
--------------------	------

BLOCK HEATER

VOLTS	120
WATTS	3,000
AMPS	25
THERMOSTAT	
	ON 100°F
	OFF 120°F

DERATES

ABOVE SEA LEVEL	
>1200FT	4.5% EVERY 1,000 FT
MAX OPERATING	122°F
TEMPERATURE	1.5% EVERY 10°F OVER 77°F AIR INLET

FUEL CONSUMPTION

Load	Gal/Hr	L/Hr
100%	76.00	287.7
75%	69.18	261.9
50%	48.05	181.9
25%	25.96	98.3

OPTIONAL ACCESSORIES

START BATTERIES
BATTERY HEATER
GENERATOR STRIP HEATER
MIMIC PANEL
NFPA 110 LEVEL 1 UPGRADE
REMOTE MONITORING
PARALLELING PANEL DSE8610
SECONDARY BREAKER

DSE 7310 CONTROLLER

ENGINE DISPLAY / PROTECTION

ENGINE RPM	YES
LOW OIL PRESSURE	YES
HIGH COOLANT TEMP	YES
LOW COOLANT	YES
OVER/UNDER SPEED	YES
OVER CRANK	YES
CAN ECU SHUTDOWN	YES
ENGINE MAINTENANCE CODES	YES

GENSET DISPLAY / PROTECTION

VOLTAGE (L-N & L-L)	YES
OVER/UNDER VOLTAGE	YES
FREQUENCY	YES
OVER/UNDER FREQUENCY	YES
AMP DISPLAY / SHUTDOWN	YES
PHASE IMBALANCE	FIELD ENABLED
KW, KVA, KVAR DISPLAY	YES
KWH, KVAH, KVARH DISPLAY	YES
GENERATOR PHASE SEQUENCE	OPTIONAL

BATTERY

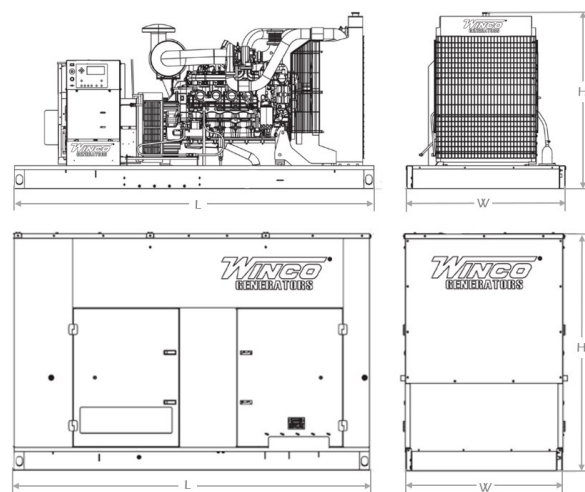
DC SYSTEM	24V
BATTERY RACK / CABLE	INCLUDED
BATTERY CHARGER	10 AMP
REQUIRED BATTERIES (1)	GROUP 4D 1200 CCA

NOTES: (1) Qty. 2 batteries are required. Batteries are not included.

DIMENSIONS

DIMENSIONS (L x W x H)	315" x 140" x 108"
WEIGHT	
OPEN	24,344 LBS
HOUSED	34,215 LBS
FREIGHT CLASS	70

NOTES: Shipping dimensions are for a housed Level 2 unit.



ADDITIONAL DISPLAYS / PROTECTIONS

EXTERNAL E-STOP	FIELD INSTALLED
BATTERY VOLTAGE	YES
BATTERY OVER/UNDER VOLTAGE	YES

COMMUNICATIONS

USB CONNECTABLE	YES
RS232/RS485	YES
REMOTE DISPLAY PANEL	YES
DSE WEB NET	YES

ADDITIONAL FEATURES

AUDIBLE ALARM	YES
ENGINE EXERCISER	DISABLED
MAINTENANCE INTERVAL TIMER	DISABLED
LOAD SHEDDING / DUMMY	DISABLED
CONFIGURABLE INPUTS	4 (EXPANDABLE)
CONFIGURABLE OUTPUTS	4 (EXPANDABLE)
EVEN LOG	250

Specifications are subject to change without notice.