

## PARTS LIST - GS20000CR

<u>PART NO.</u>	<u>DESCRIPTION</u>	<u>QUANTITY</u>
G-5038-1	Armature Assembly	1
I-826	Coupling Hub	1
G-2313-6	Fan	1
S-1769	Coupling Discs	2
G-5034	Assembly Engine Adapter	1
G-5036	Fan Guard Assembly	1
D-16	Bearing	1
W-44-A	Bearing Retainer	1
H-974	Field Coils - Series	1 Set
G-5037	Field Poles	1 Set
G-5159	A.C. Brush Spider Assembly	1
I-763-A	Brush Spider	1
B-412	A.C. Brushholder Arms	8
B-436	Terminal Lugs	4
J-56	Bushings	4
L-10	Brush Springs	4
EE-1953	Transformer	1
EE-1956	Transformer	1
G-4862-2	Diode Assembly	1
EE-1818	Breaker - Circuit	1
EE-1666	Terminal Strip	1
B-695	Ground Terminal	1
AM-94	Ammeter	1
R-165	Rheostat	1
EE-425	Fuse Holder	1
EE-441	Fuse	1

## PARTS LIST(CONTINUED) - GS20000CR

<u>PART NO.</u>	<u>DESCRIPTION</u>	<u>QUANTITY</u>
G-5183	Diode Assembly	2
EE-166	Switch, Start-Run-Stop	1
R-52	1 Ohm - 25 W. Fixed Resistor	1
EE-937	Pilot Lamp	1
EE-940	12V D.C. Bulb	1
R-171	Resistor 33 Ohm 10 W. Fixed	1
EE-653	Terminal Strip	2
EE-1950	Reactor	1
EE-1204	6V D.C. Relay	1

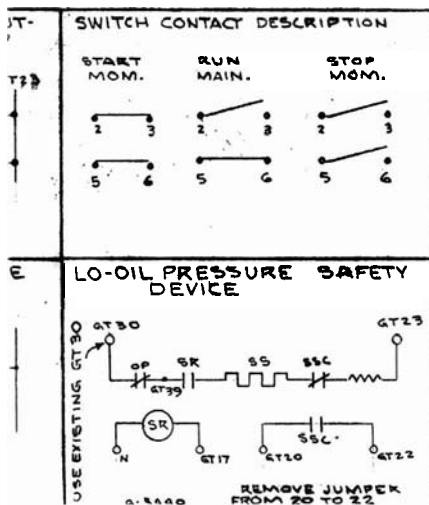
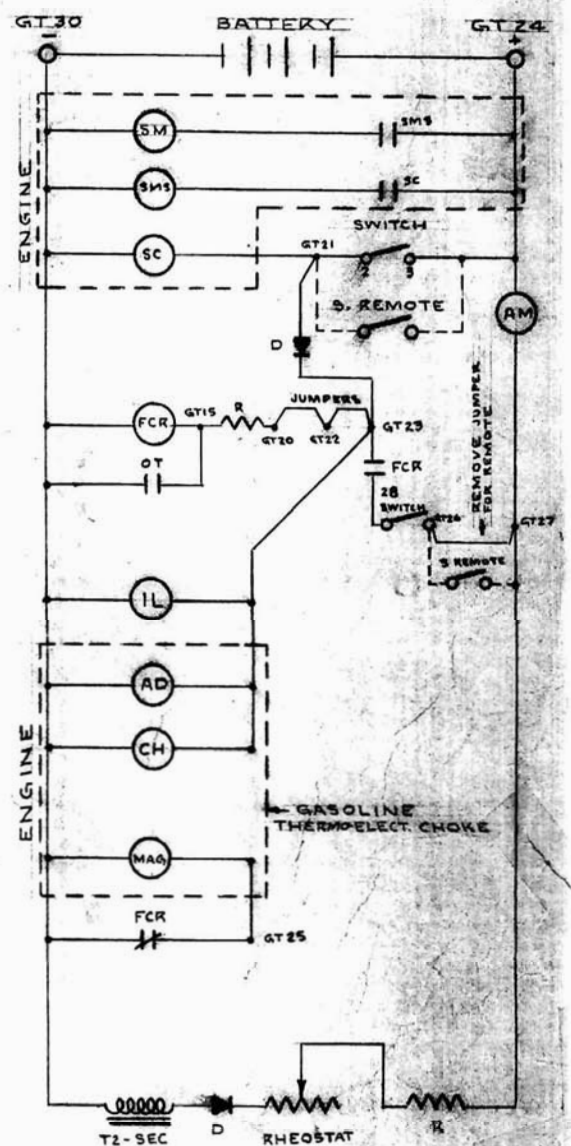
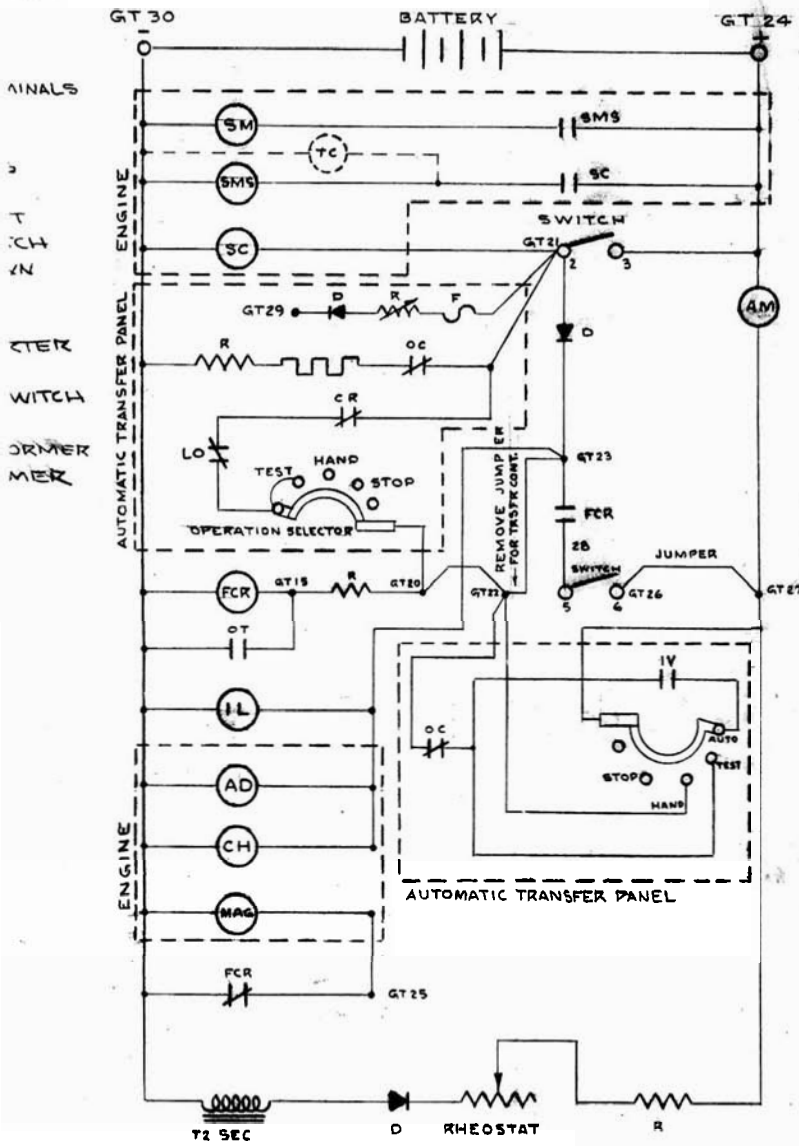
WIRING DIAGRAM

Z-1682 F-4119  
Z-1682P C-5505

D  
1  
CT.  
ELAY

DC CONTROL SYSTEM  
FOR TRANSFER PANELS

DC CONTROL SYSTEM  
FOR REMOTE



NOTE  
WHEN Z-1682 IS CHANGED Z-1682-P  
MUST BE CHANGED ACCORDINGLY.

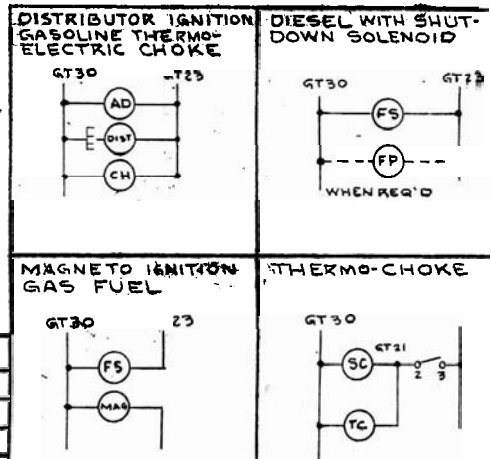
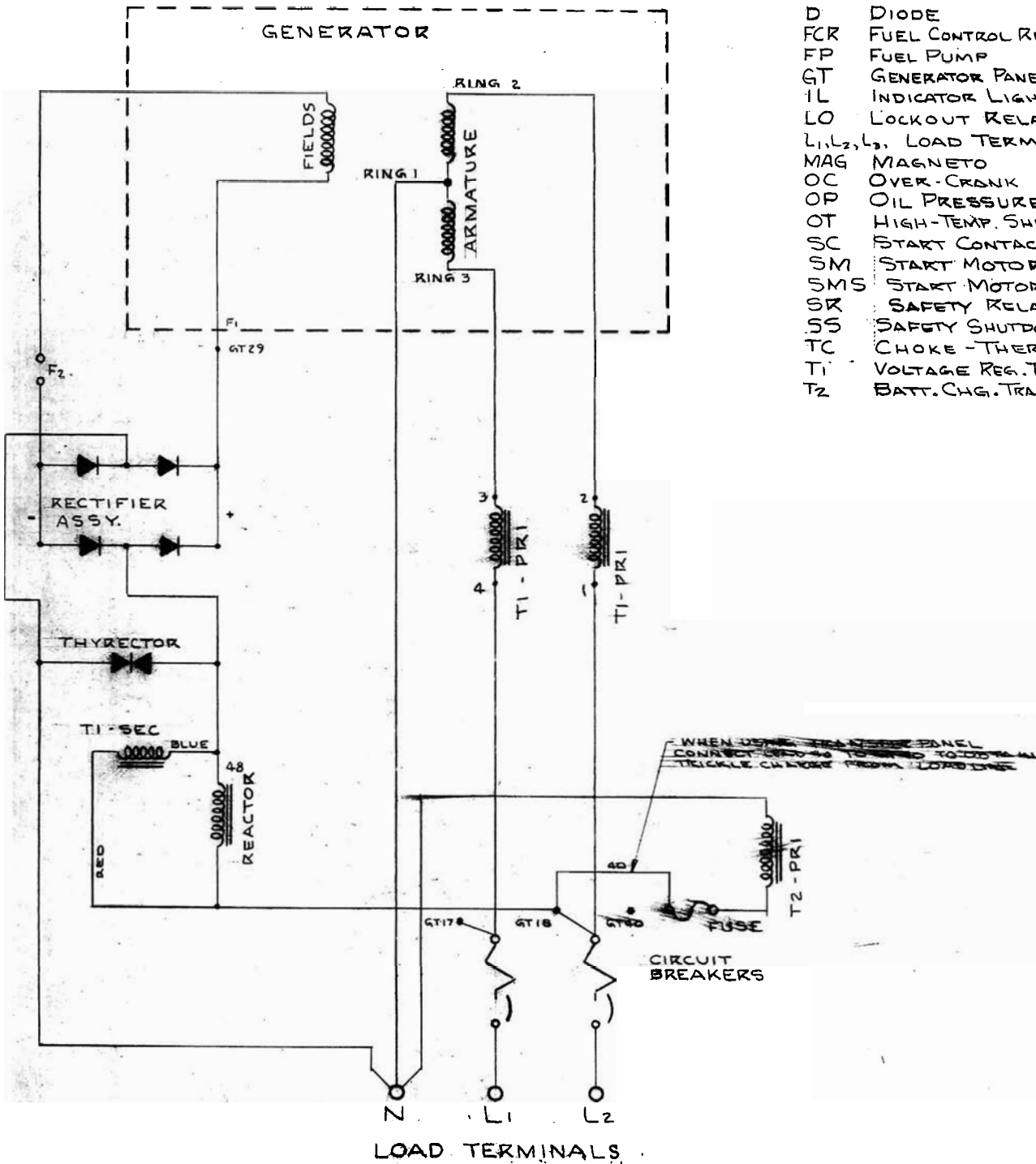
**WIRING DIAGRAM**

SCALE	MODEL NO.
DATE 11-19-69	PART NO. F-4119
DWN	CHK'D

WINPOWER MFG. CO.  
NEWTON, MASS.

**LEGEND**

- AD ANTI-DIESEL SOLENOID
- AM AMMETER - BATT. CHG.
- CH CHOKE - THERMO ELECT.
- CR OVER-CRANK CONTROL RELA
- D DIODE
- FCR FUEL CONTROL RELAY
- FP FUEL PUMP
- GT GENERATOR PANELS TERMINAL
- IL INDICATOR LIGHT
- LO LOCKOUT RELAY
- L<sub>1</sub>, L<sub>2</sub>, L<sub>3</sub> LOAD TERMINALS
- MAG MAGNETO
- OC OVER-CRANK CUTOUT
- OP OIL PRESSURE SWITCH
- OT HIGH-TEMP. SHUTDOWN
- SC START CONTACTOR
- SM START MOTOR
- SMS START MOTOR STARTER
- SR SAFETY RELAY
- SS SAFETY SHUTDOWN SWIT
- TC CHOKE - THERMO
- T<sub>1</sub> VOLTAGE REG. TRANSFORM
- T<sub>2</sub> BATT. CHG. TRANSFORME



REDRAWN	11-19-65	JFF							
WAS ORIGINALLY	DATE	CHK'D	CHG. REQUEST						
REMOVE ALL BURRS				NO. REQ'D.	MICROFILM DATA				

INCHES ON DECIMAL ± REMOVE ALL BURRS