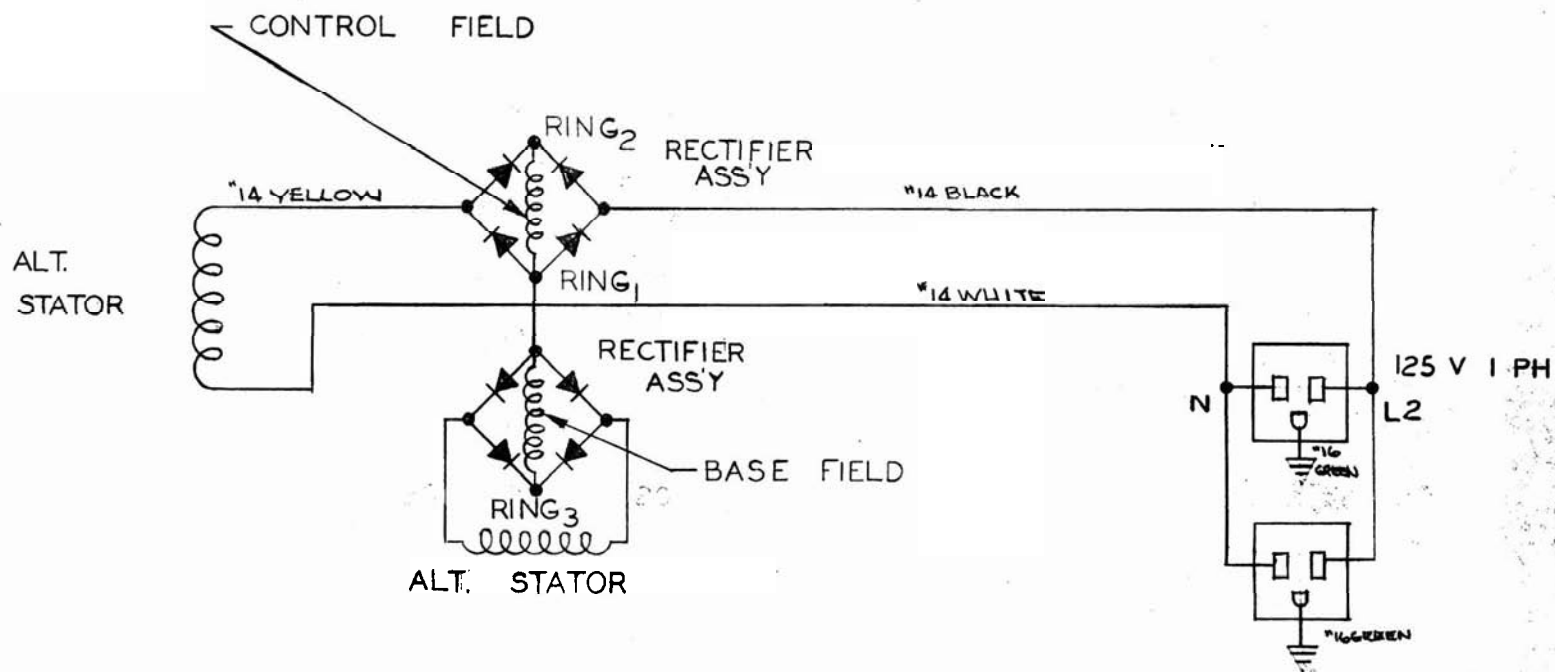


PARTS LIST
GR2036BP

<u>PART NO.</u>	<u>DESCRIPTION</u>	<u>QUANTITY</u>
A-727	Drive End Bell	1
G-5151	Rotor Assembly	1
D-59	End Bearing	1
A-727	Fan	1
S-5884	Isolator Spring	2
S-6168	Engine Support	1
V-1059	End Hood	1
G-5149	Stator Assembly, Complete	1
A-726-1	End Bell - Bearing End	1
B-701	Brushholder	3
B-701-A	Brush Cap	3
B-701-B	Brush Clip	3
Y-114	Brush	3
G-5299	Shunt Field Bridge	1
G-5298	Series Field Bridge Assembly, Neg.	1
G-5297	Series Field Bridge Assembly, Pos.	1
EE-1324	Receptacle	2
WIRING DIAGRAM	E-6979	



D	REVISED COLOR CODE	8-3-70	J.F.P.	
C	ADDED COLOR C.	2-12-68	M.E.	28045
B	ADD 20	6-9-66	RLT	
A	ADD LEAD NO.	5-10-66	ME	
CHANGE	WAS ORIGINALLY	DATE	CHK'D	CHG. REQUEST

Z-1777

WIRING DIAGRAM

SCALE	MODEL NO.
DATE 5-6-66	PART NO. IE-6979
DWN M.E.	CHK'D

JUL 25 1977
JUL 10 1967

TOLERANCE ON DIMENSIONS NOT OTHERWISE SPECIFIED } DECIMAL ±
FRACTIONAL ±
ANGULAR ±

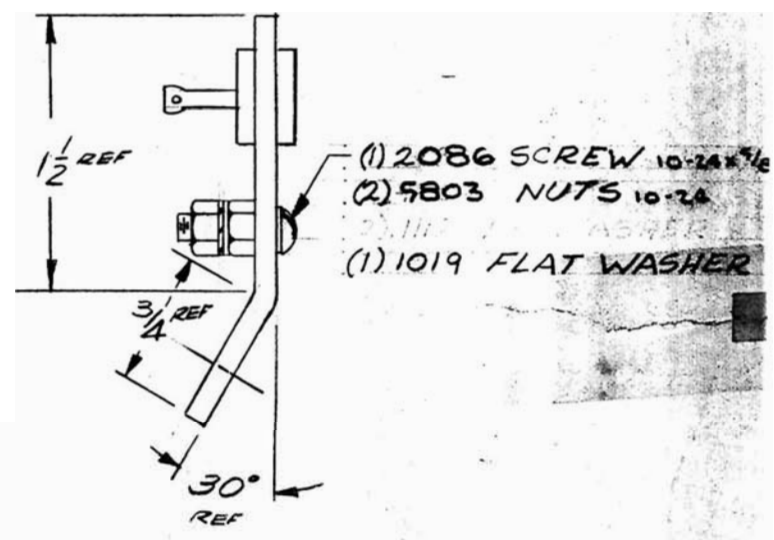
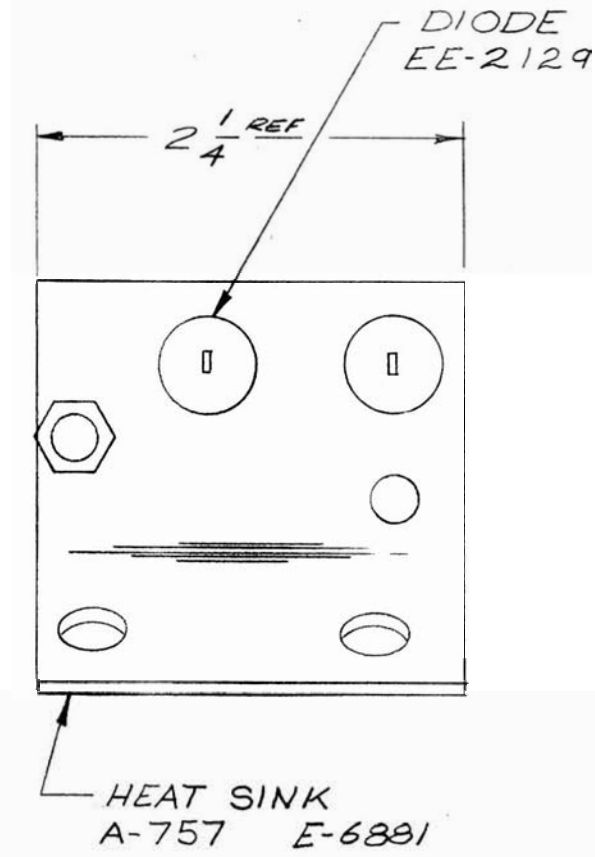
REMOVE ALL BURRS
BREAK ALL SHARP
MACHINED EDGES

NO. REQ'D. _____ MICROFILM DATA _____
MATERIAL _____

WINPOWER MFG. CO.
NEWTON, IOWA

NOTE:

DIODES SHALL BE PRESSED PERPENDICULAR TO HEATSINK. KNURL SHALL BE EVEN OR BELOW SURFACE OF HEATSINK. MAXIMUM PRESSING FORCE SHALL NOT EXCEED 800 POUNDS.

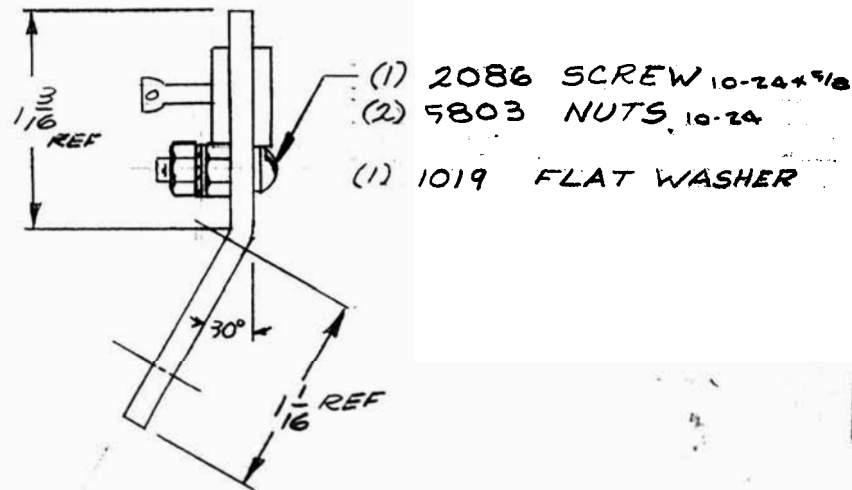
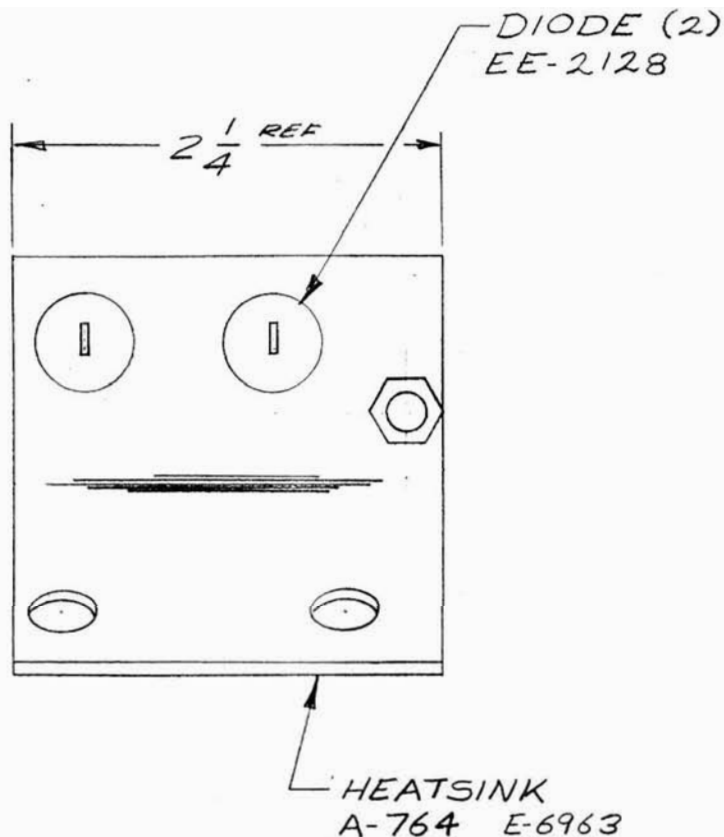


NEGATIVE

Q	2137, 4704 1112-DELETE	5-21-70	J.F.P.			NOV 19 1970	HEAT SINK ASSY	
A	REDRAWN	9-15-67	R.L.T.				SCALE FULL	MODEL NO.
CHANGE	WAS ORIGINALLY	DATE	CHK'D	CHG. REQUEST		JUL 22 1970	DATE 9-15-67	PART NO. G-5298
TOLERANCE ON DIMENSIONS NOT OTHERWISE SPECIFIED				REMOVE ALL BURRS BREAK ALL SHARP MACHINED EDGES	NO. REQ'D.	MICROFILM DATA	DATE JUL 1-0 1970	CHK'D
DECIMAL ± FRACTIONAL ± ANGULAR ±							MATERIAL SEE DETAILS	

NOTE:

DIODES SHALL BE PRESSED PERPENDICULAR TO HEATSINK. KNURL SHALL BE EVEN OR BELOW SURFACE OF HEATSINK, MAXIMUM PRESSING FORCE SHALL NOT EXCEED 800 POUNDS.

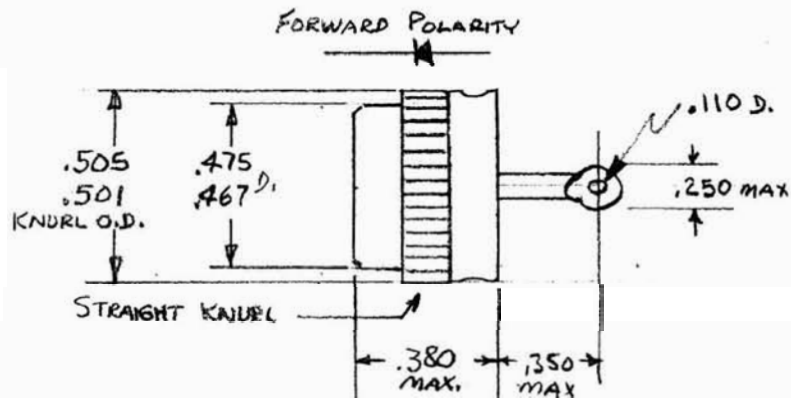


POSITIVE

B	2137, 4704 DELETE 1112	5-21-70	J.F.P.			NOV 19 1979	HEAT SINK ASSY		
A	REDRAWN	9-15-67	R.L.T				SCALE FULL	MODEL NO.	
CHANGE	WAS ORIGINALLY	DATE	CHK'D	CHG. REQUEST		JUL 2 1979	DATE 9-15-67	PART NO. G-5297	
TOLERANCE ON DIMENSIONS NOT OTHERWISE SPECIFIED				REMOVE ALL BURRS BREAK ALL SHARP MACHINED EDGES	NO. REQ'D.	MICROFILM DATA	JUL 10 1970	DWN R.L.T.	CHK'D
DECIMAL ± FRACTIONAL ± ANGULAR ±					MATERIAL SEE DETAILS				WINPOWER MFG. CO. NEWTON, IOWA

SPECIFICATIONS

WINPOWER PART No.	EE-2128	EE2129
MAX. PEAK REV. VOLTS	200 V	200 V
MAX. CONT. D.C. REV. VOLTS	200 V	200 V
MAX. SINEWAVE RMS VOLTS	140 V	140 V
MAX AVG D-C FORWARD AMPS @ 110° C CASE	20 A	20 A
@ 150° C CASE	15 A	15 A
PEAK ONE-CYCLE FORWARD SURGE AMPS (60W, Tj = 25°C)	300 A	300 A
MAX. AVG FORWARD VOLT. DROP (15A d-c SINGLE PHASE, Tj = 150°C)	0.75V	0.75V
MAX. REV. CURRENT @ RATED DC REV VOLTS (Tj = 25°C)	1.0 MA	1.0 MA
MAX. FULL LOAD REV. CURRENT (FULL LOAD AVG, 1φ, Tj = 150°C)	8.0 MA	8.0 MA
TYPICAL THERMAL JUNCTION RESISTANCE	1.5°C/WATT	1.5°C/WATT
OPERATING JUNCTION TEMP. RANGE	-65 TO +175°C	-65 TO +175°C
POLARITY	FORWARD	REVERSE



						SILICON RECTIFIER SPEC.	
CHANGE	WAS ORIGINALLY	DATE	CHK'D	CHG. REQUEST		SCALE	MODEL NO.
						4-17-63	
TOLERANCE ON DIMENSIONS NOT OTHERWISE SPECIFIED { DECIMAL ± .010 FRACTIONAL ± 1/32" ANGULAR ± 1/2°					NO. REQ'D.		CHK'D
					MICROFILM DATA		EE-2128
MATERIAL					JUL 22 1977		EE 2129
					JUL 10 1967		WINPOWER MFG. CO. NEWTON, IOWA

1. MFG. DIODE BOARD (1)
J-535, E-6879

2. DIODE (4)
EE-2152

3. BRACKET (2)
S-6171, E-6880

4. RIVET (2)
#7000

5. SOLDER

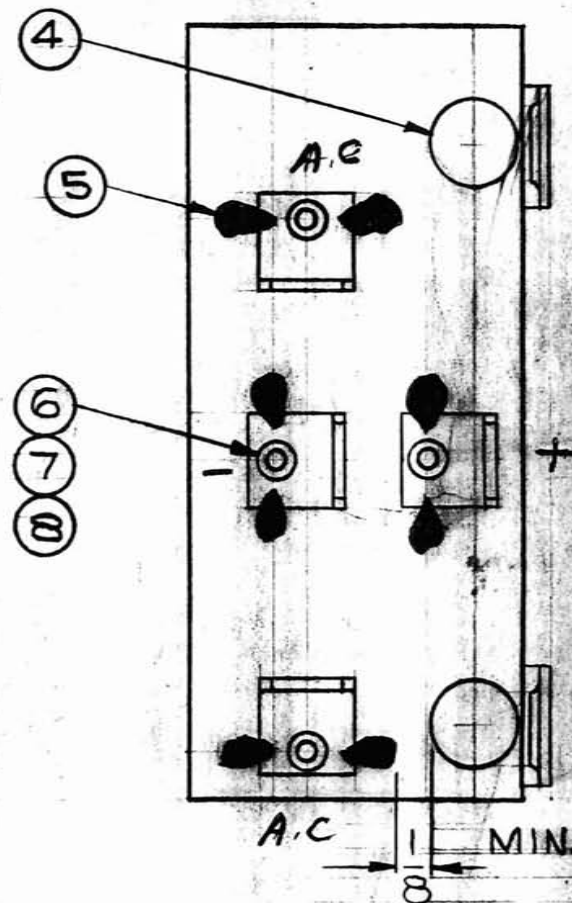
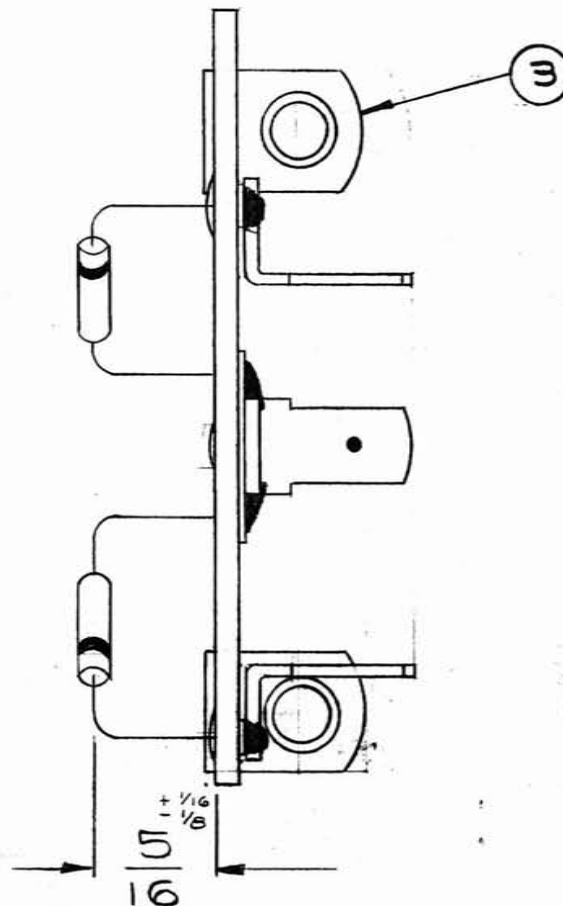
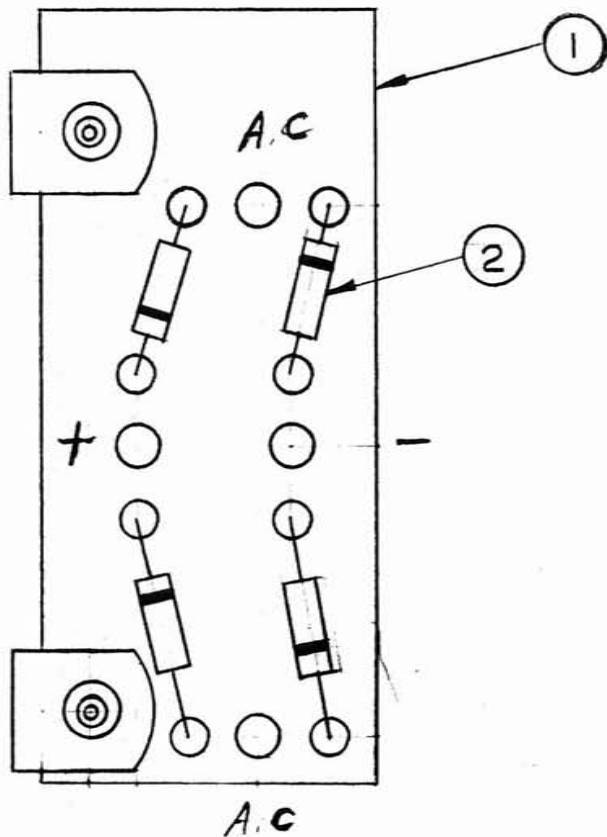
6. RIVET (4)
#7153

7. CLIP (4)
#6361

8. TERMINAL LUG (4)
#41339

NOTE:
REMOVE ALL FLUX
USING DENATURED
ALCOHOL.

NOTE FOR G-5299
MASK TERMINAL
LUGS, PAINT
WITH JJ-16103
P.D. GEORGE 1/34



C	ADDED NOTE G-5299-1	7-2-70	JFP
B	DELETED WIRE & TERM.	5-21-70	JFP
A	REVISED REDRAWN	1-28-69	JIM P.
CHANGE	WAS ORIGINALLY	DATE	CHK'D

CHG. REQUEST					NOV 19 1978
NO. REQ'D.					JUL 22 1977
MICROFILM DATA					

DIODE ASSY.	
SCALE 2-1	MODEL NO.
DATE 1-28-69	G-5299
DWN JFP	PART NO. G-5299-1
	CHK'D G-5299-1

TOLERANCE ON
DIMENSIONS NOT
OTHERWISE SPECIFIED

DECIMAL ±
FRACTIONAL ±
ANGULAR ±

REMOVE ALL BURRS
BREAK ALL SHARP
MACHINED EDGES

MATERIAL SEE ABOVE

WINPOWER MFG. CO.
NEWTON, IOWA