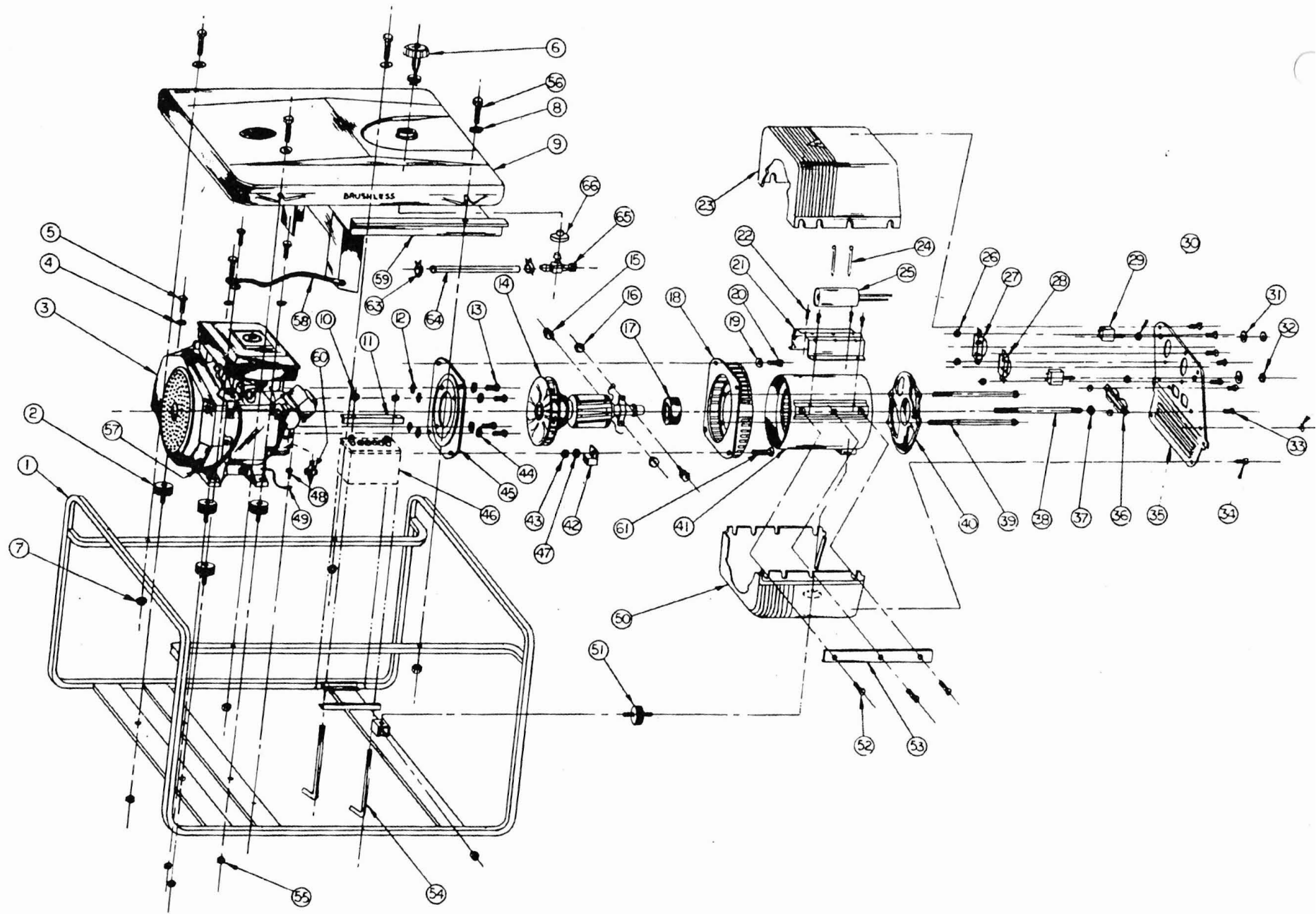


PARTS LIST FOR GP8000BS

ITEM	PART NO.	DESCRIPTION	QTY. REQD.
1	242001022	CARRY FRAME	1
2	240009001	VIBRATION ISOLATOR	4
3	242002160	BRIGGS 16HP ENGINE	1
4	240015001	5/16 SHAKEPROOF WASHER	4
5	240017006	5/16-18 x 1 1/4 HX HD SCREW	4
6	240020003	FUEL CAP W/ GAUGE	1
7	240016001	5/16-18 NYLOK HEX NUT	4
8	240015002	5/16 FLAT WASHER	4
9	240022003	6 GALLON FUEL TANK	1
10	240020020	1/4-20 WING NUT	2
11	240020001	BATTERY CARRY FRAME	1
12	240015003	7/16 INT. WASHER	4
13	240017011	3/8-16 x 3/4 HX HD SCREW	4
14	240005026	ROTOR ASSY.	1
15	240005003	DIODE	2
16	240005004	DIODE MTG. NUT	2
17	240005005	BEARING	1
18	240005006	D E BRACKET	1
19	240005007	M8 LOCK WASHER	4
20	240005008	M8 X 20 HX HD SCREW	3
21	240005009	CAPACITOR HOLDER	1
22	240005010	CAP. HOLDER MTG. SCREW	4
23	240005027	TOP PLASTIC COVER	1
24	240005012	CAPACITOR FASTENER	2
25	240005028	CAPACITOR	1
26	240016003	8-32 HEX NUT W/ KEPS	6
27	240008301	TWIST LOCK RECEP. 30A/250V	1
28	240007301	TWIST LOCK RECEP. 30A/125V	1
29	240013350	CIRCUIT BREAKER 35A/250V	2
30	240013001	PALNUT	2
31	240013002	NAMEPLATE	2
32	240013003	KNURLNUT	2
33	240017005	8-32 X 3/8 SCREW	6
34	240005014	END COVER MTG. SCREW	6
35	242018002	END COVER	1
36	240007200	DUPLEX RECEP. 20A/125V	1
37	240005016	M8 SERPRESS NUT	1
38	240005029	ROTOR DRAW BOLT	1
39	240005030	DRAW BOLT	4
40	240005018	N D E BRACKET	1
41	240005031	STATOR ASSY.	1
42	240010001	GROUND LUG	1
43	240016002	M8 HEX NUT	1
44	240015006	3/8 LOCK WASHER	4
45	240005001	COUPLING FLANGE	1
46		12VDC BATTERY (NOT INCLUDED)	1
47	240015009	5/16 INTERNAL SHKPRF. WASHER	1
48	240017001	10-24 x 3/8 THD. FORM SCREW	1
49	240011001	GROUND STRAP ASSY.	1
50	240005032	BOTTOM PLASTIC COVER	1
51	240009003	VIBRATION ISOLATOR	1
52	240005019	FASTEN. STRIP MTG. SCREW	6

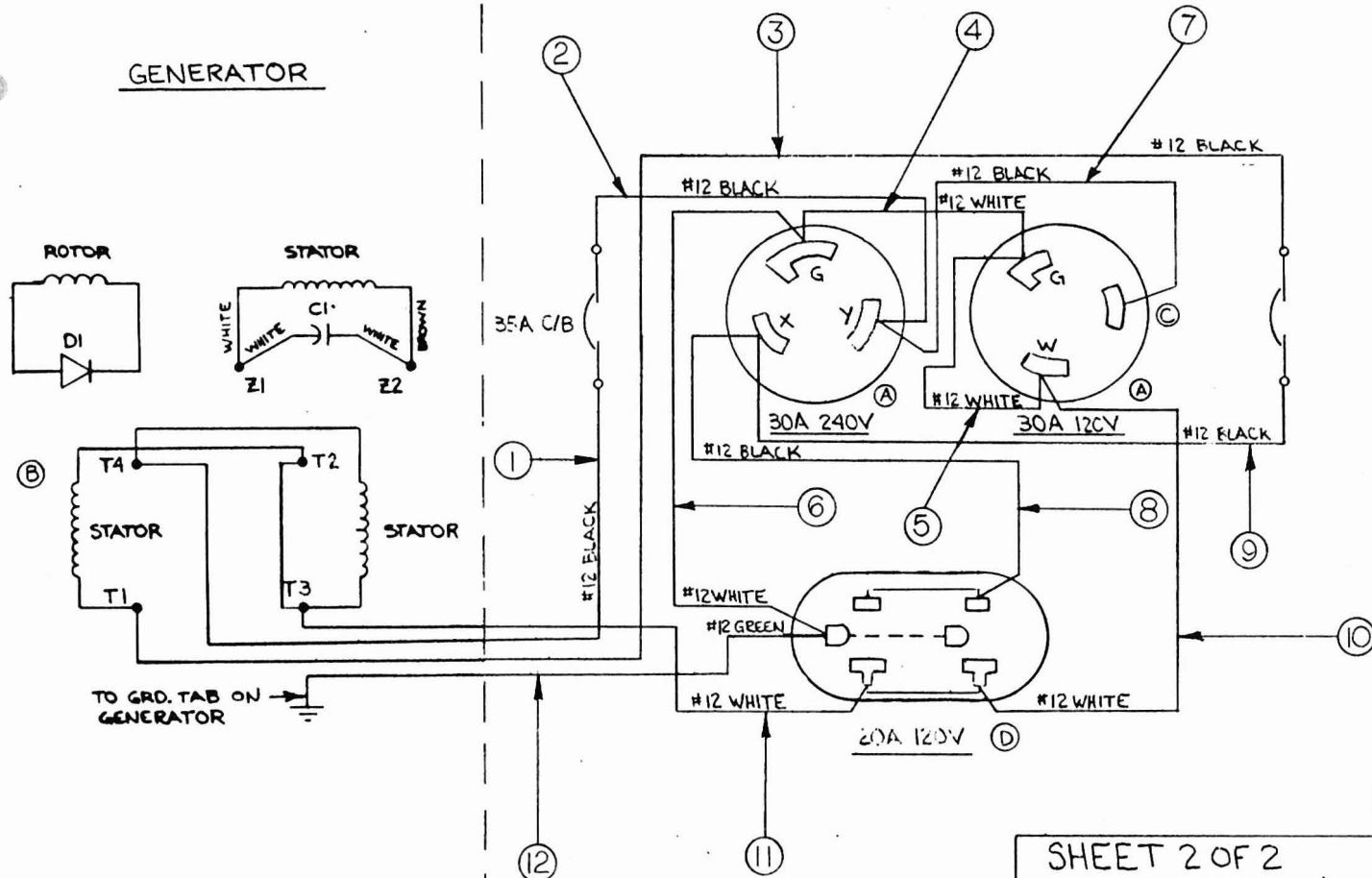
PARTS LIST FOR GP8000BS

ITEM	PART NO.	DESCRIPTION	QTY. REQD.
53	240005033	FASTENING STRIP	2
54	240020002	BATTERY HOLD DOWN BOLT	2
55	240016001	5/16-18 NYLOK HEX NUT	5
56	240017003	5/16-18 x 1 1/2 HX HD SCREW	4
57	240020006	POS. BATTERY CABLE	1
58	240020007	NEG. BATTERY CABLE	1
59	240033001	HEAT SHIELD	1
60	244020005	OIL PRESSURE SWITCH	1
61	240017004	M8 X 30 HX HD SCREW	1
62	240020008	5/16 DOME PLUG	2
63	240024001	1/4 FUEL LINE CLAMP	2
64	240300250	1/4 FUEL LINE HOSE	3 FT.
65	244020001	FUEL LINE SHUTOFF	1
66	244020002	FUEL SHUTOFF GROMMET	1



242012080
PART NO.

GENERATOR



LEAD	ITEM	RAW MATL	SIZE	COLOR	LENGTH	A END	B END	TERMINALS
	1	240200121	#12	BLACK	12"	240019001	240019002	
	2	240200121	#12	BLACK	4"	240019001	240019002	
	3	240200121	#12	BLACK	12"	240019001	240019002	
	4	240200123	#12	WHITE	4"	240019001	240019001	
	5	240200123	#12	WHITE	4"	240019001	240019001	
	6	240200123	#12	WHITE	4"	240019001	240019001	
	7	240200121	#12	BLACK	4"	240019001	240019001	
	8	240200121	#12	BLACK	4"	240019001	240019001	
	9	240200121	#12	BLACK	6"	240019001	240019002	
	10	240200123	#12	WHITE	6"	240019001	240019001	
	11	240200123	#12	WHITE	12"	240019001	240019001	
	12	240200123	#12	GREEN	12"	240019001	240019002	

7-18-88	E	NEXT ASSY REF WAS DE0000BS	6707	PRC
5-17-88	D	REV. DUPLEX RECEP	6648	PRC
12-7-88	C	REV. DWG. SEE ECN	6537	PRC
11-4-88	B	REV. DWG. SEE ECN	6517	PRC
9-1-88	A	REV. DWG. SEE ECN	6470	PRC

SHEET 2 OF 2
(SHEET 1 OF 2 IS "C" SIZE)

TOLERANCES UNLESS OTHERWISE SPECIFIED:
ON MACHINED DIMENSIONS OF .000 ALLOW ± .003
.000 ALLOW ± .010
ON ANGLES ALLOW ± 1°
DRILLED HOLES + .008, - .000

— RUNOUT	— STRAIGHT
— FLATNESS	— CONCENTRIC
— ANGULARITY	— PARALLEL
— SQUARE	— ROUND
— TRUE POSITION	— CENTRAL

MAT'L	NOTED
TREAT	
FINISH	

DATE	LET.	REVISION RECORD	C/N	DR.
SCALE	DRAWN	DATE	6-30-88	
CHK'D	APP'D	RELEASED	6-29-88	CODE
PRC 7-9-88	KPM	ON E.C.N.	6399	X
THE PIERCE COMPANY, INC. A SUBSIDIARY OF AVIS INDUSTRIAL CORPORATION UPLAND, IND. U.S.A. 46988				
NAME END COVER ASSY				
PATTERN				REV.
PART NO. 242012080				E