

WINPOWER CORPORATION

"SPORTSMAN" PORTABLE ELECTRIC POWER

2000 WATTS, A.C., 180 WATTS D.C., 3600 R.P.M.

BRIGGS & STRATTON ENGINE

PARTS LIST RELEASE 4-14-77

GM 2B2-B RFB

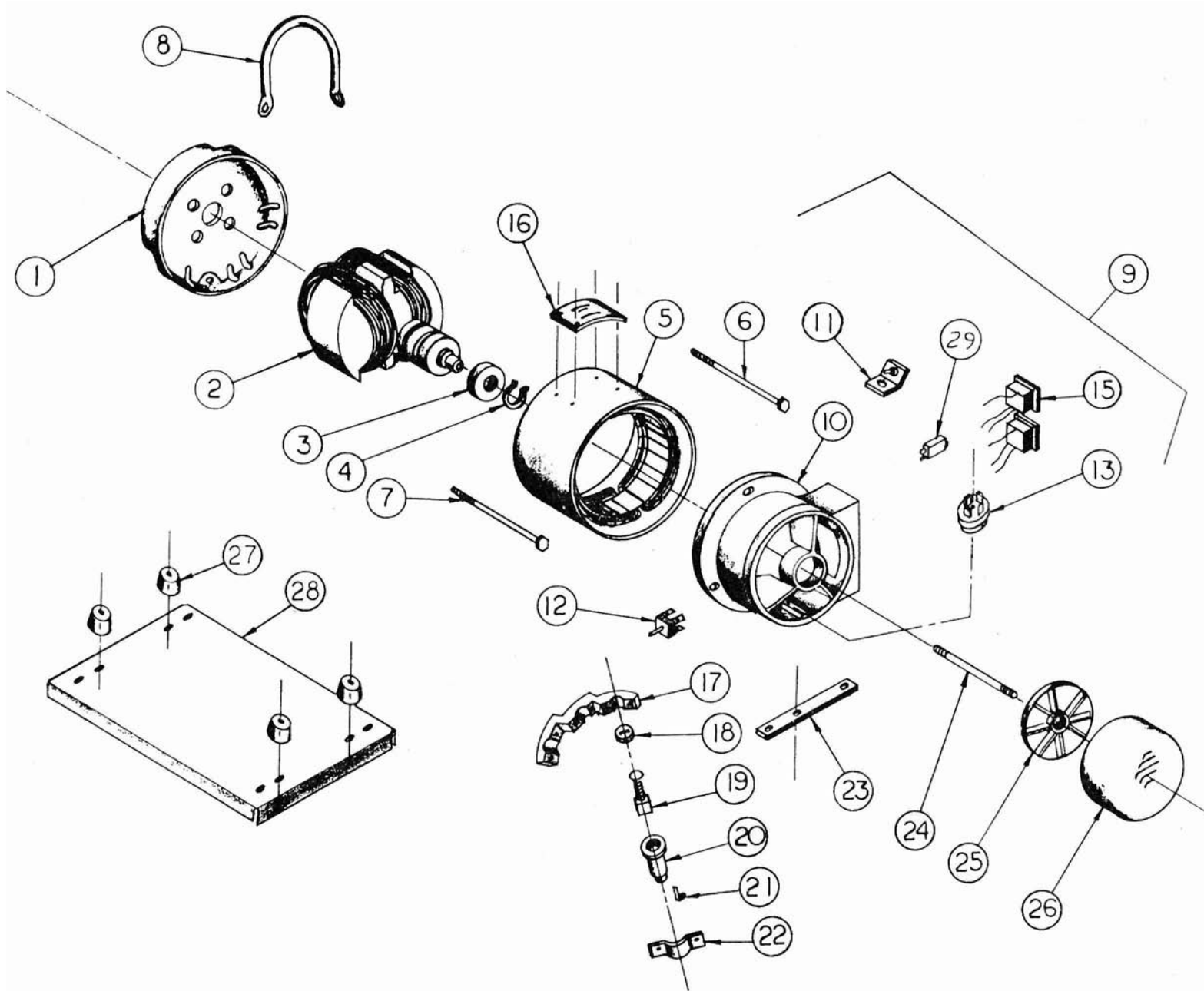
			MODEL GM2B2-B TYPE 1
REF. NO.	PART DESCRIPTION	PART NO.	REQ'D UNIT
1	Drive End Bell	A-722	1
2	Rotor Assembly	G-5151	1
3	Bearing	D-59	1
4	Retaining Ring	11099	1
5	Stator Frame Assembly	G-5149-5	1
6	Screw 1/4 - 20 x 7	4074-01	1
7	Screw 1/4 - 20 x 5	4074	3
8	Handle	S-6167	1
9	End Bell Assembly - Complete	G-5304-10	1
10	End Bell	A-726-4	1
11	Rectifier Assembly - Batt. Charge	G-6120	1
12	Rectifier Assembly - Shunt	EE-2188-1	1
13	Rectifier Assembly	EE-2214	1
14	---		
15	Receptacle	EE-1324	2
16	Nameplate	Z-2480	1
17	Brush Holder Bracket	A-746	1
18	Brush Holder Cap	B-701-1	3
19	Brush	Y-114	3
20	Brush Holder	B-701	3
21	Brush Holder Clip	B-701-2	3
22	Clamp - Brush Holder	S-6096	3
23	Generator Support	S-7279	1
24	Stud	S-6230	1
25	Fan	A-727	1
26	End Hood	S-7587	1
27	Vibration Isolator	W-207	4
28	Base	S-7270	1
Not Shown	Engine, Briggs & Stratton	EC-11301	1

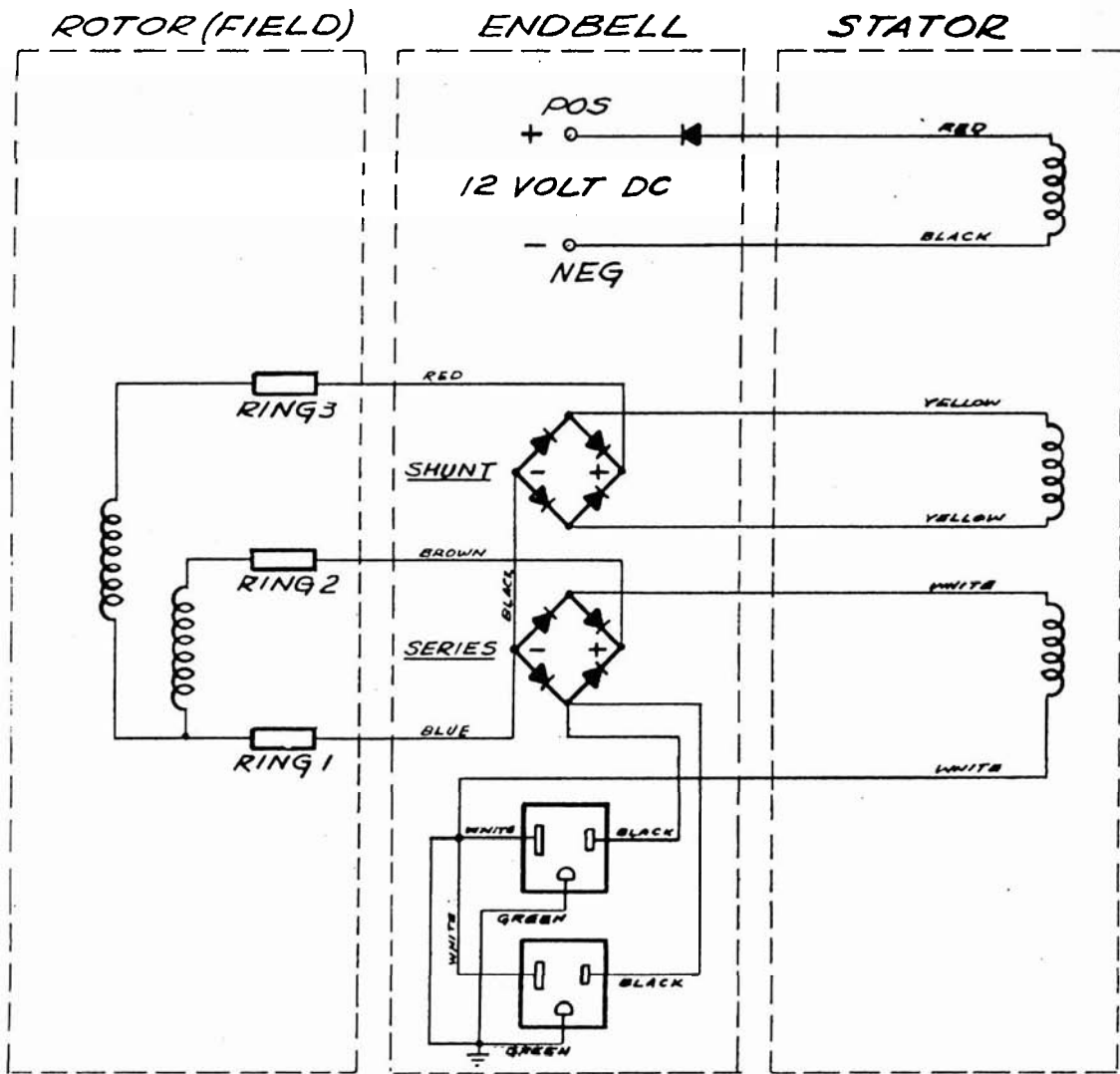
PARTS DRAWING IE-9415

Wiring Dia. IE-7820
Last Revision Let. F

PL-1900

E-9415





E	REDRAWN NO CIRCUIT CHANGE	7-24-74	T.C.G	RELEASED 8-26-74				
CHANGE	WAS ORIGINALLY	DATE	CHK'D	CHG. REQUEST				
TOLERANCE ON DIMENSIONS NOT OTHERWISE SPECIFIED			DECIMAL ±	REMOVE ALL BURRS BREAK ALL SHARP MACHINED EDGES	NO. REQ'D.		MICROFILM DATA	
			FRACTIONAL ±		MATERIAL			
			ANGULAR ±					

CIRCUIT DIAGRAM	
SCALE ~	MODEL NO. GM2B2-B
DATE 7-24-74	PART NO. Z-2000
DWN T.C.G.	CHK'D
WINPOWER CORPORATION NEWTON, IOWA 50208	