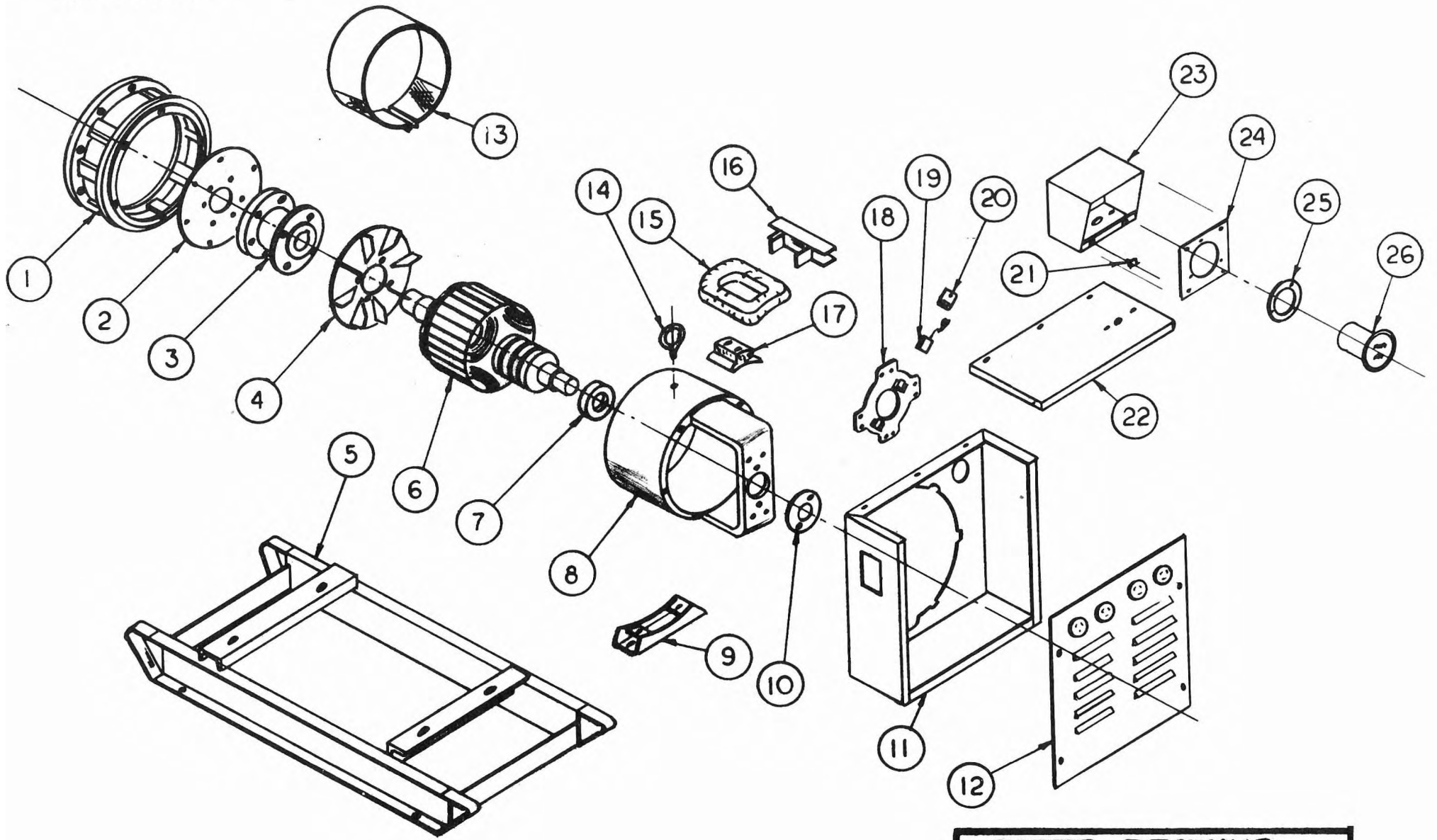


PARTS LIST
DE705D4-C/3

<u>REF. NO.</u>	<u>PART NO.</u>	<u>PART NAME OR DESCRIPTION</u>	<u>REQ'D/UNIT</u>
Not Shown	EC-50101	Engine American VM SU-101	1
1	I-841	Drive End Adapter	1
2	S-6419	Coupling Disc	4
3	I-826	Coupling Hub	1
4	G-2313-6	Fan	1
5	G-6312	Skid Assembly	1
6	G-5370-43	Armature Assy	1
7	D-8	Bearing	1
8	G-5359-4	Field Frame	1
9	G-5225	Generator Support	1
10	W-43	Bearing Retainer	1
11	G-6314	Panel Back Assy	1
12	G-6289	Panel Front Assy	1
13	G-5036-1	Cover - Fan Guard	1
14	S-859	Lift Ring	1
15	H-1132	Field Coil	4
16	J-544	Coil Shield	8
17	G-5360	Field Pole Assy	4
18	G-5454	Brush Gear Assy	1
19	Y-51	Brush	4
20	G-3422	Brush Spring	4
21	4999	Nylon - Insert	4
22	S-6927-2	Panel Top	1
23	G-6144-4	Panel Weld Assy	1
24	S-7514-7	Panel Front	1
25	J-193	Meter Mount	1
26	FM-5.01	Freq-Time Meter	1

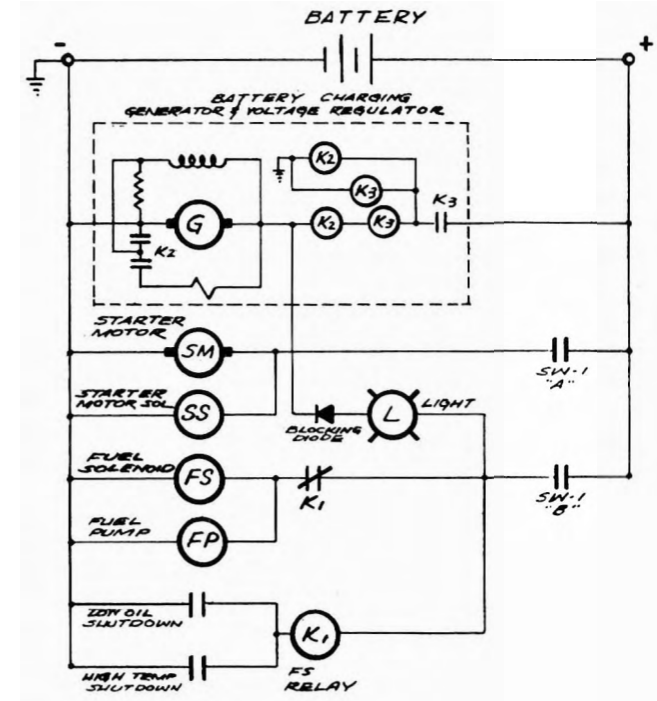
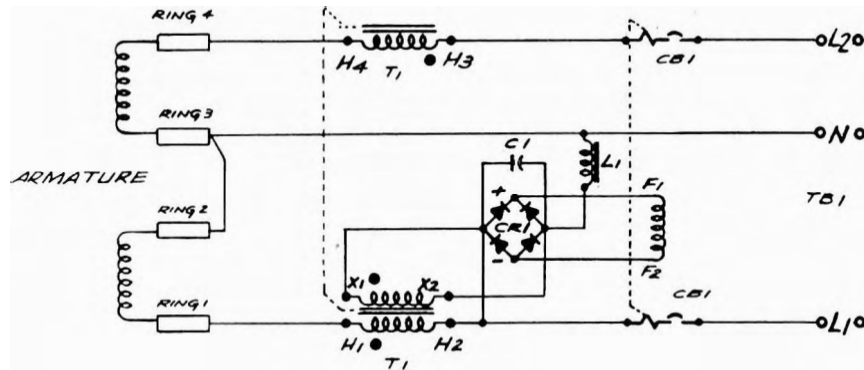
Parts Drawing C-6624
Wiring Diagram C-6609

C. 6624



PARTS DRAWING	
SCALE <u>1-31-74</u>	MODEL NO. _____
DATE <u>T.C.G.</u>	PART NO. _____
BY <u>T.C.G.</u>	CHK'D _____
WINPOWER MFG. CO. NEWTON, IOWA	

C-6624



SWITCH LEGEND (SW1)
 START RUN STOP (MOM)
 A X
 B X X

RELOCATED BLOCKING DIODE	2-6-74	T.C.G.			
ADD'D DC CIRCUIT	1-28-74	T.C.G.			
WAS ORIGINALLY	DATE	CHK'D	CHK. REQUEST	NO. REQ'D.	MICROFILM DATA
TOLERANCE ON DIMENSIONS NOT OTHERWISE SPECIFIED			REMOVE ALL BURRS BREAK ALL SHARP MACHINED EDGES	MATERIAL	
DECIMAL ±					
FRACTIONAL ±					
ANGULAR ±					

C1 ----- CAPACITOR
 CB1 ----- CIRCUIT BREAKER
 CR1 ----- RECTIFIER ASSY
 L1 ----- CHOKE
 T1 ----- TRANSFORMER
 TB1 ----- TERMINAL BOARD

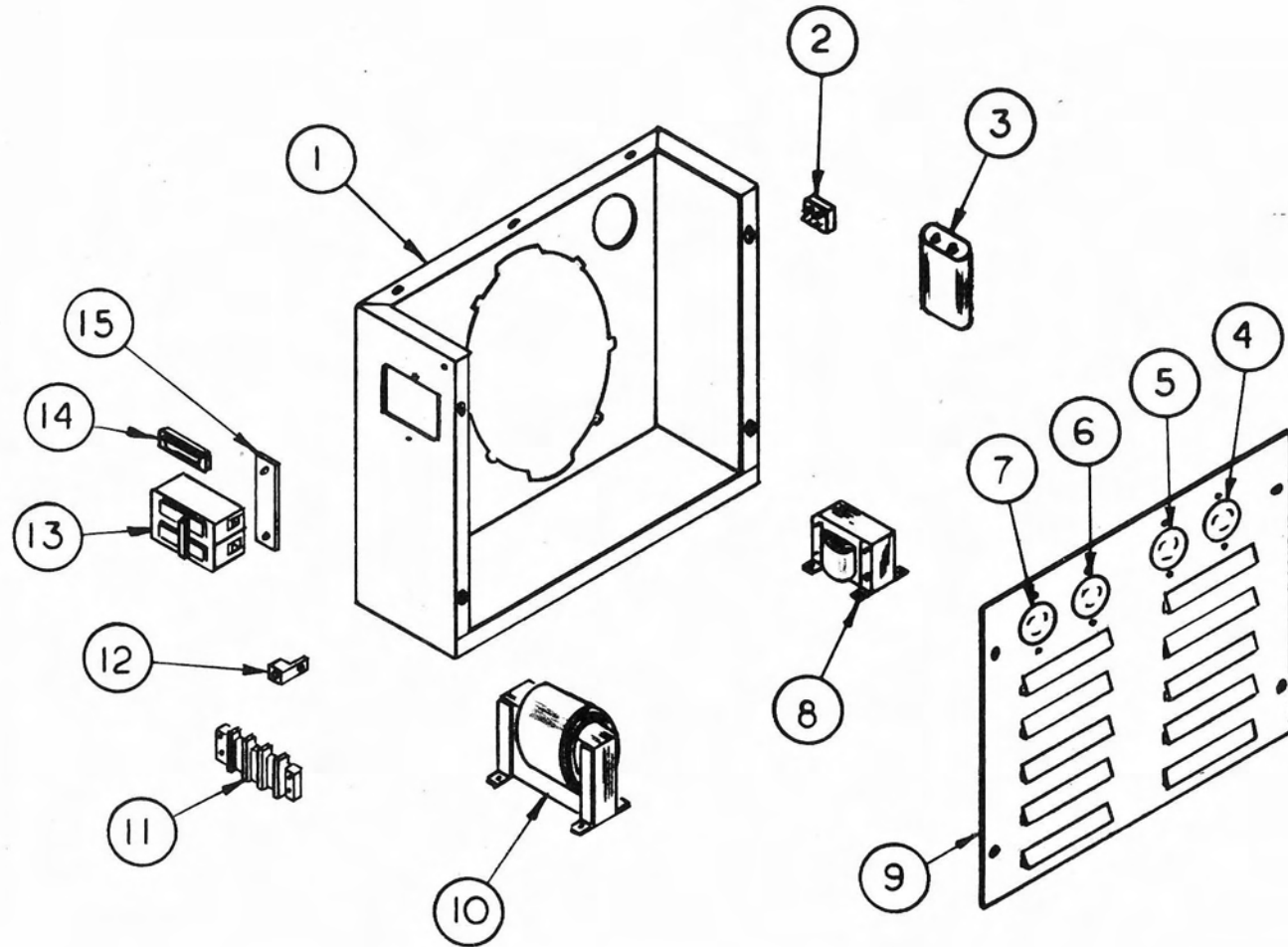
CIRCUIT DIAGRAM	
SCALE ~	MODEL NO.
DATE 12-12-73	PART NO. Z-259
DWR T.C.G.	CHK'D
WINPOWER MFG. CO. NEWTON, IOWA	
C-6609	

PARTS LIST
PANEL DE705D4-C/3

<u>REF. NO.</u>	<u>PART NO.</u>	<u>PART NAME OR DESCRIPTION</u>	<u>REQ'D/UNIT</u>
1	G-5838-10	Panel Weld Assy	1
2	EE-2171	Rectifier Assy	1
3	EE-1548	Capacitor	1
4	EE-322	Receptacle	1
5	EE-322	Receptacle	1
6	EE-1373	Receptacle	1
7	EE-1373	Receptacle	1
8	EE-1998	Choke	1
9	S-6103-04	Panel End Cover	1
10	EE-1997	Transformer	1
11	EE-658	Terminal Board	1
12	EE-1671	Lug - Ground	1
13	EE-1848	Circuit Breaker	1
14	EE-779	Filler	1
15	S-5027-1	Mounting Plate	1

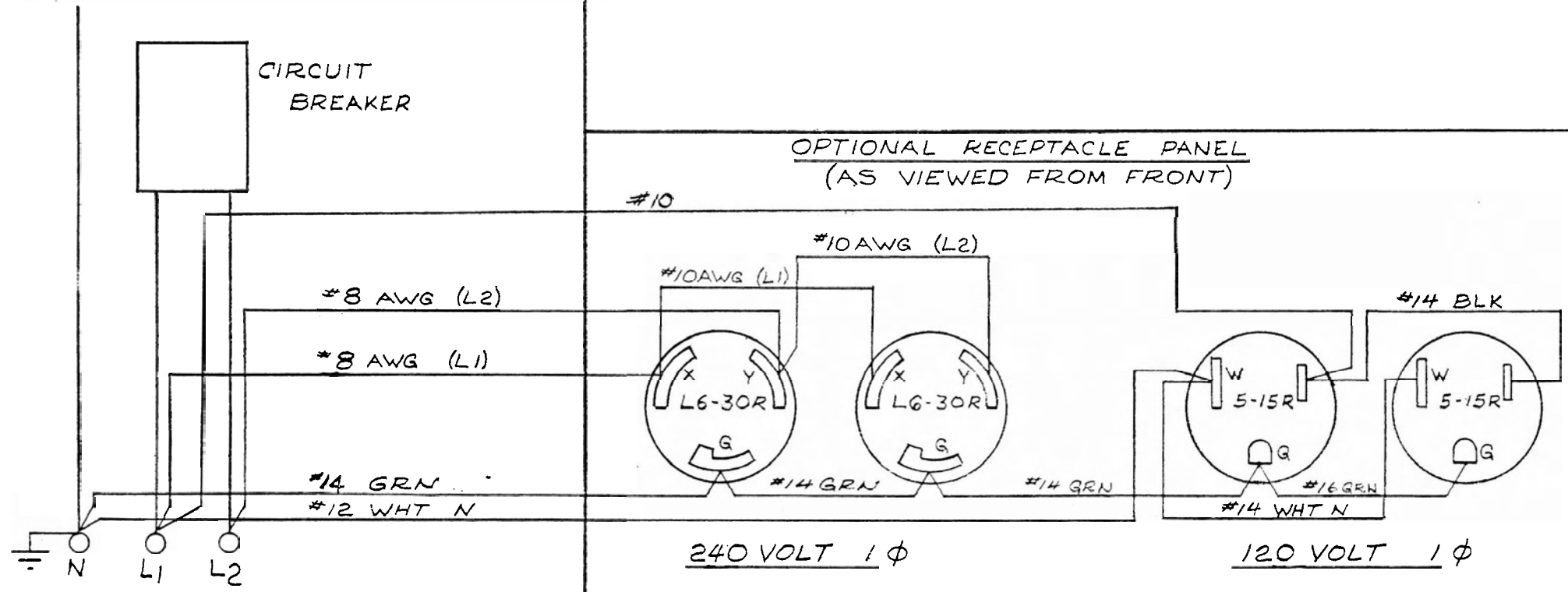
Parts Drawing E-9491
Wiring Diagram C-6609
Wiring Diagram E-9391

E-9491



						PARTS DRAWING	
CHANGE	WAS ORIGINALLY	DATE	CHK'D	CHG. REQUEST	NO. REQ'D.	MICROFILM DATA	MODEL NO. _____
TOLERANCE ON DIMENSIONS NOT OTHERWISE SPECIFIED				REMOVE ALL BURRS BREAK ALL SHARP MACHINED EDGES	MATERIAL _____		SCALE ~
} DECIMAL ± } FRACTIONAL ± } ANGULAR ±							DATE 1-31-74
							CHK'D _____
						WINPOWER MFG. CO. NEWTON, IOWA	

GEN. CO. (RSL PANEL
 STANDARD)



A	REVISED	10-17-74	SF	RT			
CHANGE	WAS ORIGINALLY	DATE	CHK'D	CHG. REQUEST	NO. REQ'D.	MICROFILM DATA	
TOLERANCE ON DIMENSIONS NOT OTHERWISE SPECIFIED				REMOVE ALL BURRS BREAK ALL SHARP MACHINED EDGES	MATERIAL _____		
DECIMAL \pm							
FRACTIONAL \pm							
ANGULAR \pm							

WIRING-OPTIONAL PANEL	
SCALE \sim	MODEL NO.
DATE 6-25-73	PART NO. Z-2381
DWN R.L.T.	CHK'D

WINPOWER MFG. CO.
 NEWTON, IOWA