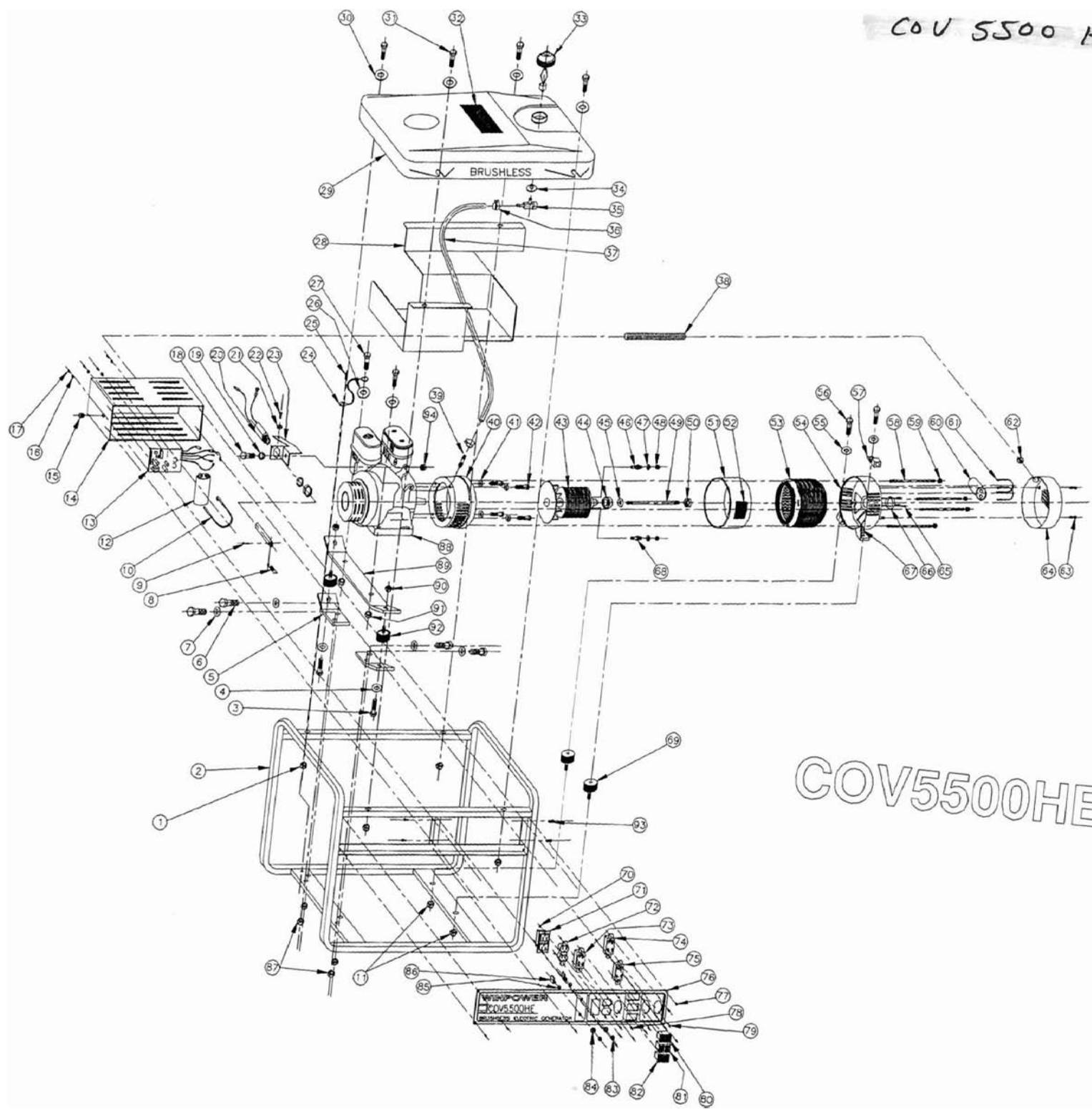


# COV5500HE PARTS LIST

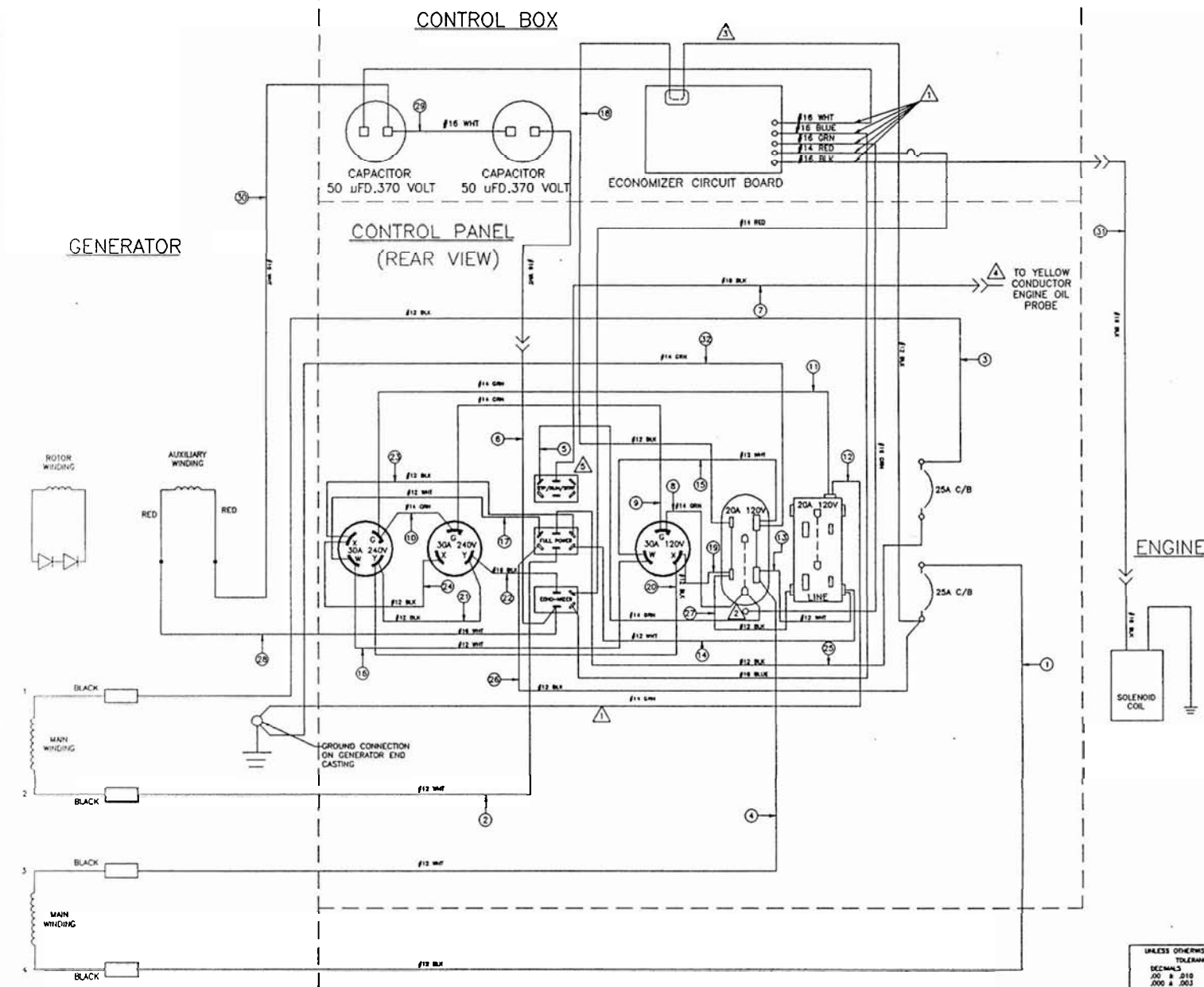
ITEM NO.	PART NO.	DESCRIPTION	ITEM NO.	PART NO.	DESCRIPTION
1	240016001	5/16-18 NYLOK HEX NUT	47	N/A	DIODE LOCK WASHER
2	240001180	CARRY FRAME	48	N/A	DIODE NUT
3	240017019	5/16-18X5/8 HHS CAP	49	240411018	ROTOR THRU BOLT
4	240015004	5/16 LOCK WASHER	50	4611	5/16-24 HEX NUT W/KEPS
5	240041004	ENGINE SUPPORT BKT	51	240410012	COVER BAND
6	240017063	5/16-18X.88 HHS CAP	52	240021015	DECAL - I.D. PLATE
7	240015004	5/16 LOCK WASHER	53	240440201	STATOR ASSEMBLY
8	240034105	ECON LINKAGE SPRING	54	240411001	BEARING CASTING
9	240017064	COTTER PIN 5/64X.75	55	240016006	3/8 LOCK WASHER
10	240020070	WIRE TIE	56	240017006	5/16-18X1 1/4 HHS CAP
11	240016010	3/8 NYLOK HEX NUT	57	240010001	GOUND LUG
11	240016010	3/8 NYLOK HEX NUT	58	240411019	STATOR THRU BOLT
12	240420000	CAPACITOR	59	240016005	1/4-20 HEX NUT W/KEPS
13	248034010	ECON CRT BOARD ASSY	60	240420000	CAPACITOR
14	240028030	CONTROL BOX	61	240020070	WIRE TIE
15	240020022	GROMMET	62	240020094	RUBBER GROMMET
16	240015011	#6 FLAT WASHER	63	240410022	END COVER MTG SCREW
17	240017060	#6-32X1/4 RHS SCREW	64	240410006	END COVER
18	240017006	5/16-18X1.25 HHS CAP	65	240410001	#10-24X1/2 SCREW
19	240015004	5/16 LOCK WASHER	66	240410005	BEARING COVER
20	248034103	ECON SOLENOID ASSY	67	240021016	DECAL - GROUND
21	1112	#10 SHK PROOF WASHER	68	240421000	DIODE
22	240017065	.8MM PHIL HEX SCREW	69	240009070	VIBRATION ISOLATOR
23	240034102	ECON MTG BRACKET	70	240016003	#8-32 HEX NUT W/KEPS
24	240011008	GROUND STRAP ASSY	71	240007201	20A/120V DUPLEX
25	240017001	10-24X3/8 SCREW	72	240007200	20A/125V DUPLEX
26	240015004	5/16 LOCK WASHER	73	240007301	30A/125V TWIST LOCK
27	240017003	5/16-18X1.5 HHS CAP	74	240008302	30A/250V TWIST LOCK
28	240033050	HEAT SHIELD	75	240008301	30A/250V TWIST LOCK
29	240022003	6 GAL FUEL TANK	76	246026006	CNTRL PANEL-SILKSCRND
30	240015002	5/16 FLAT WASHER	77	240017001	10-24X3/8 SCREW
31	240017020	5/16-18X1.75 HHS CAP	78	240017005	#8-32X3/8 RHS SCREW
32	240021005	DECAL - INSTRUCTIONS	79	240017015	#6-32X3/8 RHS SCREW
33	240020003	FUEL CAP W/GAUGE	80	240027031	SWITCH - STRT/RUN/STOP
34	244020002	FUEL SHUT-OFF GRMT	81	240027202	SWITCH - FULL POWER
35	244020001	FUEL SHUT-OFF VALVE	82	240027032	SWITCH - ECON
36	240024001	.25 FUEL LINE CLAMP	83	240013002	KNURLNUT
37	240300250	.25 FUEL LINE	84	240013003	NAMEPLATE
38	240029000	PLASTIC CONDUIT(5/8DIA)	85	240013001	PALNUT
39	240024003	STRAIGHT CONNECTOR	86	240013250	20A/250V C/B
40	240411000	DRIVE END ADPTR CSTG	87	240016001	5/16 NYLOK HEX NUT
41	240015006	3/8 LOCK WASHER	88	248003110	HONDA ENGINE-GX340VA
42	3578	3/8-16X1 HHS CAP	89	240041003	ENGINE MTG RAIL
43	240440101	ROTOR ASSEMBLY	90	240016001	5/16 NYLOK HEX NUT
44	240411004	BEARING	91	240016001	5/16 NYLOK HEX NUT
45	240015002	5/16 FLAT WASHER	92	240009001	VIBRATION ISOLATOR
46	240421001	DIODE	93	240017001	10-24X3/8 SCREW
			94	240016001	5/16 NYLOK HEX NUT

COV 5500 HE



COV5500HE

248012750  
REV 1



BILL OF MATERIAL

ITEM	QTY	DESCRIPTION
1	1	248015391 WIRE ASSEMBLY
2	1	248016433 WIRE ASSEMBLY
3	1	248015391 WIRE ASSEMBLY
4	1	248014373 WIRE ASSEMBLY
5	1	248064077 WIRE ASSEMBLY
6	1	248066156 WIRE ASSEMBLY
7	1	248086195 WIRE ASSEMBLY
8	1	248044057 WIRE ASSEMBLY
9	1	248044067 WIRE ASSEMBLY
10	1	248044067 WIRE ASSEMBLY
11	1	248044137 WIRE ASSEMBLY
12	1	248045377 WIRE ASSEMBLY
13	1	248044043 WIRE ASSEMBLY
14	1	248046103 WIRE ASSEMBLY
15	1	24804065 WIRE ASSEMBLY
16	1	248044093 WIRE ASSEMBLY
17	1	248046073 WIRE ASSEMBLY
18	1	248046401 WIRE ASSEMBLY
19	1	248044031 WIRE ASSEMBLY
20	1	248044091 WIRE ASSEMBLY
21	1	248044041 WIRE ASSEMBLY
22	1	248046035 WIRE ASSEMBLY
23	1	248046081 WIRE ASSEMBLY
24	1	248044041 WIRE ASSEMBLY
25	1	248066141 WIRE ASSEMBLY
26	1	248066151 WIRE ASSEMBLY
27	1	248044041 WIRE ASSEMBLY
28	1	248026466 WIRE ASSEMBLY
29	1	248066066 WIRE ASSEMBLY
30	1	248067236 WIRE ASSEMBLY
31	1	248078205 WIRE ASSEMBLY
32	1	248045377 WIRE ASSEMBLY

- ▲ OPTIONAL PUSH-ON TERMINALS CAN BE LOCATED IMMEDIATELY BELOW THOSE ILLUSTRATED (REF. DWG. 240027031)
- ▲ ATTACH (1) 240019013 TERMINAL TO YELLOW OIL PROBE WIRE AFTER CUTTING FLUSH AT REAR OF SWITCH (ENGINE MOUNTED)
- ▲ ADD (1) 240019002 TERMINAL AFTER ROUTING WIRE THROUGH TRANSFORMER (ONE PASS)
- ▲ MAKE GROUND CONNECTION AT DUPLEX RECEIPT. MTG. SCREW
- ▲ SUPPLIED WITH ECONOMIZER BOARD

NOTES:

SHEET 2 OF 2  
SHEET 1 OF 2 IS A "D" SIZE DWG.

UNLESS OTHERWISE SPECIFIED: TOLERANCES DIMENALS FRACTIONAL .000 & .003 DRILLED HOLES +.005, -.000		6/29/94 C REDRAWN & REVISED SEE ECH 7935 JKS	
DATE	LET.	REVISION RECORD	E.C.N. DR.
<b>THE PIERCE CO., INC.</b> A SUBSIDIARY OF AVIS INDUSTRIAL CORPORATION UPLAND, IND. U.S.A. 46988			
NAME <b>PANEL ASSEMBLY (PIERCE GENERATOR END)</b>			
DRW'G J. SPEICHER	DATE 5/17/91	CODE M B	ASSEMBLY REF. COV5500HE
CHECKED	RELEASED 7/18/91	SCALE NONE	SCALE NONE
APP'D	ON E.C.A. 7123	PART NO. 248012750	REV C