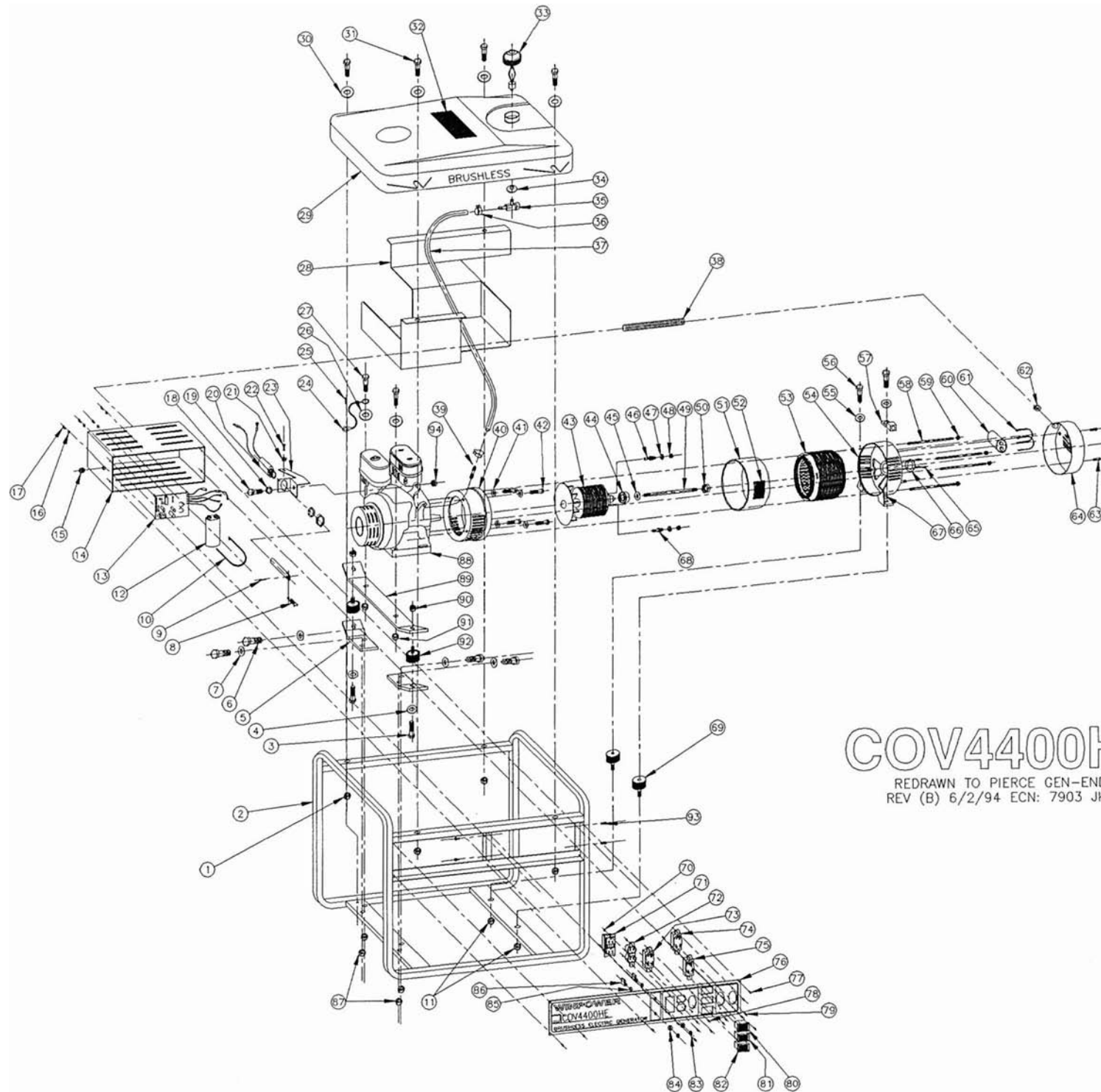


# COV4400HE PARTS LIST

ITEM NO.	PART NO.	DESCRIPTION	ITEM NO.	PART NO.	DESCRIPTION
1	240016001	5/16-18 NYLOK HEX NUT	48	N/A	DIODE NUT
2	240001180	CARRY FRAME	49	240411014	ROTOR THRU BOLT
3	240017019	5/16-18X5/8 HHS CAP	50	4611	5/16-24 HEX NUT W/KEPS
4	240015004	5/16 LOCK WASHER	51	240410011	COVER BAND
5	240041004	ENGINE SUPPORT BKT	52	240021015	DECAL - I.D. PLATE
6	240017063	5/16-18X.88 HHS CAP	53	240440200	STATOR ASSEMBLY
7	240015004	5/16 LOCK WASHER	54	240411001	BEARING CASTING
8	240034104	ECON LINKAGE SPRING	55	240016006	3/8 LOCK WASHER
9	240017064	COTTER PIN 5/64X.75	56	240017006	5/16-18X1 1/4 HHS CAP
10	240020070	WIRE TIE	57	240010001	GROUND LUG
11	240016010	3/8 NYLOK HEX NUT	58	240411016	STATOR THRU BOLT
12	240420000	CAPACITOR	59	240016005	1/4-20 HEX NUT W/KEPS
13	248034010	ECON CRT BOARD ASSY	60	240420000	CAPACITOR
14	240028030	CONTROL BOX	61	240020070	WIRE TIE
15	240020022	GROMMET	62	240020094	RUBBER GROMMET
16	240015011	#6 FLAT WASHER	63	240410022	END COVER MTG SCREW
17	240017060	#6-32X1/4 RHS SCREW	64	240410006	END COVER
18	240017006	5/16-18X1.25 HHS CAP	65	240410001	#10-24X1/2 SCREW
19	240015004	5/16 LOCK WASHER	66	240410005	BEARING COVER
20	248034103	ECON SOLENOID ASSY	67	240021016	DECAL - GROUND
21	1112	#10 SHK PROOF WASHER	68	240421000	DIODE
22	240017065	.8MM PHIL HEX SCREW	69	240009070	VIBRATION ISOLATOR
23	240034102	ECON MTG BRACKET	70	240016003	#8-32 HEX NUT W/KEPS
24	240011008	GROUND STRAP ASSY	71	240007201	20A/120V DUPLEX
25	240017001	10-24X3/8 SCREW	72	240007200	20A/125V DUPLEX
26	240015004	5/16 LOCK WASHER	73	240007301	30A/125V TWIST LOCK
27	240017003	5/16-18X1.5 HHS CAP	74	240008302	30A/250V TWIST LOCK
28	240033050	HEAT SHIELD	75	240008301	30A/250V TWIST LOCK
29	240022003	6 GAL FUEL TANK	76	246026006	CNTRL PANEL-SILKSCRND
30	240015002	5/16 FLAT WASHER	77	240017001	10-24X3/8 SCREW
31	240017020	5/16-18X1.75 HHS CAP	78	240017005	#8-32X3/8 RHS SCREW
32	240021005	DECAL - INSTRUCTIONS	79	240017015	#6-32X3/8 RHS SCREW
33	240020003	FUEL CAP W/GAUGE	80	240027031	SWITCH - STRT/RUN/STOP
34	244020002	FUEL SHUT-OFF GRMT	81	240027202	SWITCH - FULL POWER
35	244020001	FUEL SHUT-OFF VALVE	82	240027032	SWITCH - ECON
36	240024001	.25 FUEL LINE CLAMP	83	240013002	KNURLNUT
37	240300250	.25 FUEL LINE	84	240013003	NAMEPLATE
38	240029000	PLASTIC CONDUIT(5/8DIA)	85	240013001	PALNUT
39	240024003	STRAIGHT CONNECTOR	86	240013200	20A/250V C/B
40	240411000	DRIVE END ADPTR CSTG	87	240016001	5/16 NYLOK HEX NUT
41	240015006	3/8 LOCK WASHER	88	248003080	HONDA ENGINE-GX240VA
42	3578	3/8-16X1 HHS CAP	89	240041003	ENGINE MTG RAIL
43	240440100	ROTOR ASSEMBLY	90	240016001	5/16 NYLOK HEX NUT
44	240411004	BEARING	91	240016001	5/16 NYLOK HEX NUT
45	240015002	5/16 FLAT WASHER	92	240009001	VIBRATION ISOLATOR
46	240421001	DIODE	93	240017001	10-24X3/8 SCREW
47	N/A	DIODE LOCK WASHER	94	240016001	5/16 NYLOK HEX NUT

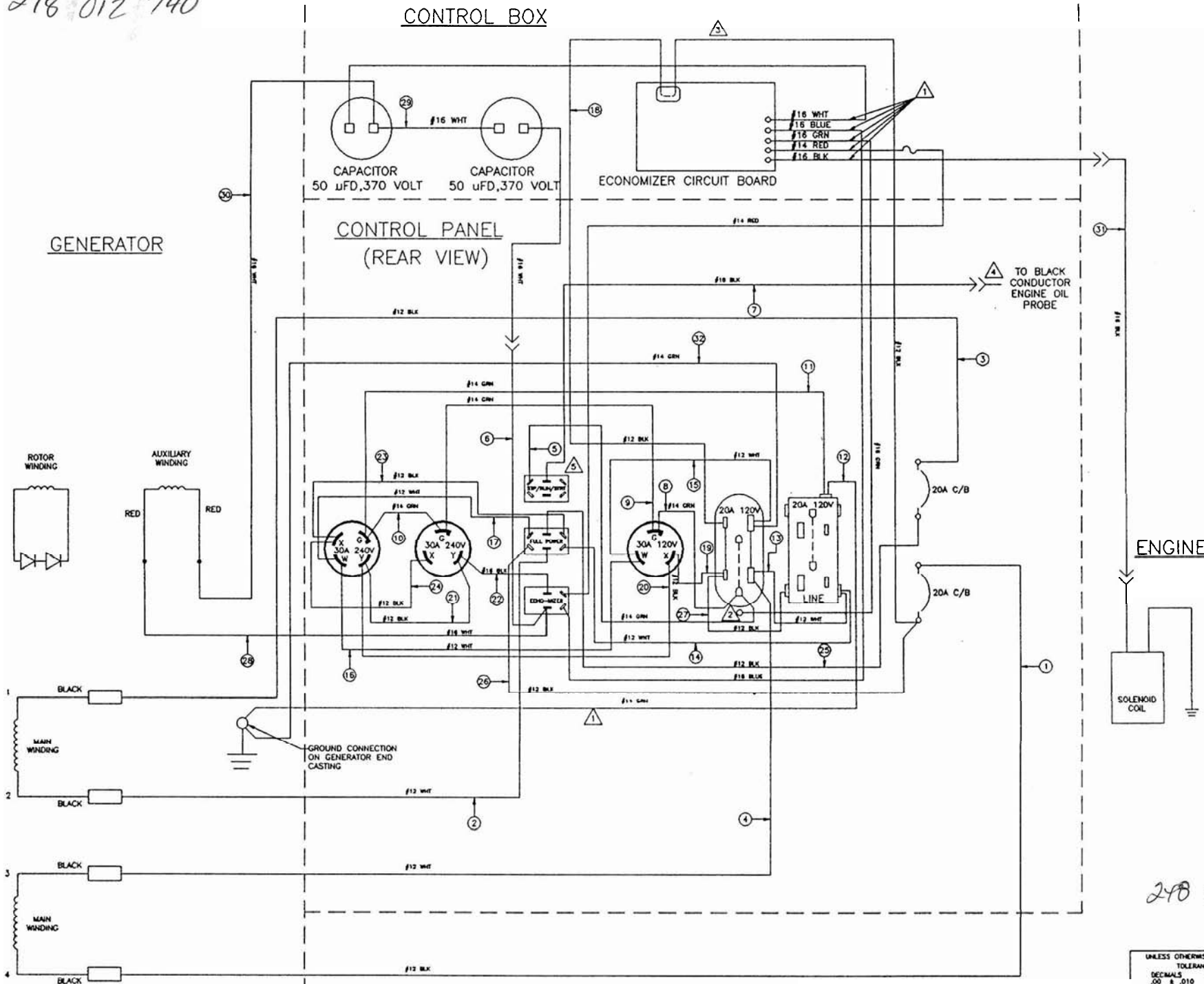
COV 4400



# COV4400HE

REDRAWN TO PIERCE GEN-END  
REV (B) 6/2/94 ECN: 7903 JKS

248 012 740



4	248014373
5	248064077
6	248066156
7	248086195
8	248044057
9	248044067
10	248044067
11	248044137
12	248045377
13	248044043
14	248046103
15	248044063
16	248044093
17	248046073
18	248046401
19	248044031
20	248044091
21	248044041
22	248046035
23	248046081
24	248044041
25	248066141
26	248066151
27	248044041
28	248026466
29	248066066
30	248067236
31	248078205
32	248045377

ENGINE

- 5 OPTIONAL PUSH-IMMEDIATELY BI (REF. DWG. 24)
- 4 ATTACH (1) 24" PROBE WIRE AT SWITCH (ENGINE)
- ADD (1) 24001 WIRE THROUGH
- MAKE GROUND RECEPT. MTG.
- 1 SUPPLIED WITH

NOTES:

248 012 740

SHEET 2 OF 2  
SHEET 1 OF 2 IS A "D" SIZE DWG.

UNLESS OTHERWISE SPECIFIED: TOLERANCES DECIMALS ANGULAR .00 & .010 & 1" .000 & .003		6/29/94	C	REDRAW
DRILLED HOLES +.005, -.000		DATE	LET.	
DRAWN J. SPEICHER		NAME PAN		
DATE 5/17/91		CODE (PIERCE)		
CHECKED		RELEASED 7/18/91	CODE MTB	
APPD		ON E.C.H.		