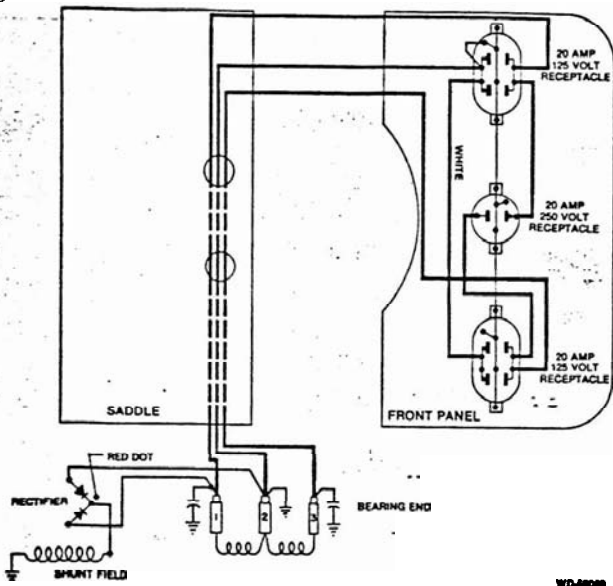


ILLUSTRATED PARTS LIST



SCHEMATIC DIAGRAM

PART NO.	REF. NO.	DESCRIPTION	QTY.	PART NO.
	430	Armature Assembly	1	55318
458	431	Armature	1	55318-1
480	432	Bearing	1	55223
3290				
9416	440	Field Shell & Coil Ass'y	1	55416-3
55224	441A	Field Coil	1	61406
23558	441B	Field Coil	1	61406-1
23605	442	Pole Shoe	2	23207
1720	443	Pole Shoe Retainer	2	23208
40746	444	Field Shell & BRACKET ASSY	1	59067
23760	445	Stud	4	23451
467	447	Brush	6	23607
47136	460	Brush Rack Ass'y	1	55247
	462	Brush Holder*	6	59690
	463	Capacitor AC	2	41221
	465	Brush Mounting Plate	1	55107
	467	Rectifier (Excitation)	1	54976
	473	Barrier Spacer**	6	59688
	491	End Cover	1	55007
		DC CAPACITOR	1	54977
	600	Cradle Assembly		
	601	Cradle	1	57906
	605	Subframe	1	57963
	611	Rubber Foot	8	20191
	*	Part No. Changed From 23500 5-1-81		
	**	Barrier Spacer used with brush holder 59690 not shown		
100		Type Drive Engine B & S 252412-0178-01	1	57965
200		Control Panel	1	59068-4
201		Cover	1	59073
206		Ground Strap	2	41387-7
212		Rear Panel	1	59074
240		Front Panel Ass'y	1	59071-2
246		Receptacle 230V	1	57642
248		Receptacle Duplex	2	50766
249		Front Panel (Bare)	1	59072
270		Saddle	1	56926
271		Brace	2	51576
272		Rubber Grommet	1	56927
400		Generator	1	59066-3
401		Fan Assembly	1	55101
402		Thru Bolt	1	23197-7
411		End Bracket	1	54178

PARTS ORDERING INFORMATION REQUIRED

To fill your order for service parts, please advise the complete Generator model number and serial number, part number(s), and part description. If in doubt, consult the factory prior to placing the order. Send all parts orders to WINCO, Division of Dyna Technology, Inc., 225 South Cordova Ave., Le Center, MN 56057.



TECHNICAL DATA

GENERATOR SPECIFICATIONS:

Watts—5300; Volts—115/230; Amps.—23; PH—1; Hz-60; RPM—3600

Nominal Voltage:	No Load:	Full Load:
115 VAC	132 VAC	112 VAC
230 VAC	264 VAC	224 VAC

Resistance:

Field Coils— $9.5 \pm .5$ ohms
Armature—Less than 1 ohm ring to ring

Excitation Voltage: Approximately

55 Volts D.C.

Separately Excited:

12 VDC to Positive Field Lead (Disconnected from rectifier)
50 to 70 VAC Output

BASIC TEST PROCEDURE:

Refer to illustration for component location by Reference Number.

Example: No output—Check field coils for opens or shorts. Reference Numbers 441A and 441B

No Output:

- Check for loose or open connections.
- Check rectifier, located on Reference Number 465.
- Check field coils for opens or shorts. Reference Numbers 441A and 441B.
- Check brushes for wear, proper seating and not stuck in holder. Reference Number 447.
- Check armature for opens or shorts. Reference Number 431.

Low Voltage—No Load:

- Check generator speed/frequency (3600 RPM nominal).
- Check for loose or open connections.
- Check winding resistance. Reference Numbers 441A-441B and 431.

Low Voltage—Full Load:

- Check generator speed/frequency (3600 RPM nominal).
- Check generator load.
- Check for loose or open connections.
- Check winding resistance. Reference Numbers 441A-441B and 431.

SS 1165

WINGO[®]

Division of
DYNA TECHNOLOGY, INC.
225 South Cordova
Le Center, MN 56057
Phone (612) 357-6821