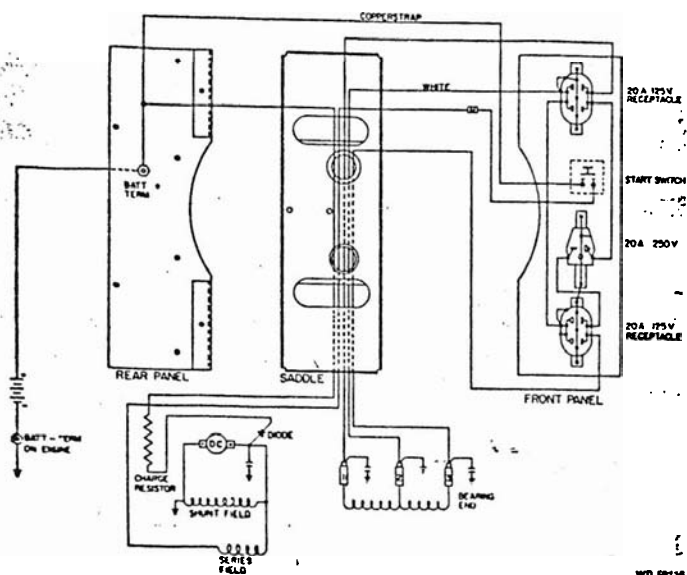


ILLUSTRATED PARTS LIST



SCHEMATIC DIAGRAM

REF. NO.	DESCRIPTION	QTY.	PART NO.
400	Generator	1	59114-2
401	Fan Assembly	1	55101
402	Thru Bolt	1	23197-7
411	End Bracket	1	54178
430	Armature Assembly	1	55317
431	Armature	1	55317-1
432	Bearing	1	55223
440	Field Shell & Coil Assembly	1	55421-4
441A	Field Coil	1	62837
441B	Field Coil	1	62837-1
442	Pole Shoe	2	23207
443	Pole Shoe Retainer	2	23208
444	Field Shell & Bracket	1	59067
445	Stud	4	23451
446	D.C. Brush	2	41393
447	A.C. Brush	6	23607
460	Brush Rack Assembly	1	55423&1
461	Riveted Brush Plate LH	1	41744
462	A.C. Brush Holder	6	23500
463	A.C. Capacitor	2	41221
465	Riveted Brush Plate RH	1	41744-1
466	D.C. Capacitor	1	41180
491	End Cover	1	55007
	GROUND STRIP	1	41387-6
600	Cradle Assembly		
601	Cradle	1	57906
605	Subframe	1	57963
611	Rubber Foot	8	20191

100	Type Drive Engine B & S 252412-0178-01	1	57965
200	Control Box Assembly	1	59115-4
201	Cover	1	59073
206	Ground Strap	2	41387-7
210	Rear Panel Assembly	1	59119
211	Insulation Washer	1	6892
212	Rear Panel (Bare)	1	59118
214	Resistor (Battery Charge)	1	41984
215	Shoulder Washer	1	21981
216	Copper Strap	1	52789-11
217	Machine Screw	1	21974
218	Start Switch	1	2210
221	Insulation Sleeve	1	54041-19
240	Front Panel Assembly	1	59117-2
246	Receptacle 250V 20A	1	57642
248	Receptacle 125V 20A	2	50766
249	Front Panel (Bare)	1	59088
250	DIODE	1	54023-1
270	Saddle	1	56926
271	Braces	2	51576
272	Grommet	1	56927

PARTS ORDERING INFORMATION REQUIRED

To fill your order for service parts, please advise the complete Generator model number and serial number, part number(s), and part description. If in doubt, consult the factory prior to placing the order. Send all parts orders to WINCO, Division of Dyna Technology, Inc., 225 South Cordova Ave., Le Center, MN 56057.



# TECHNICAL DATA

## GENERATOR SPECIFICATIONS:

Watts—5300; Volts—115/230; Amps.—23; PH—1; Hz-60; RPM—3600

Nominal Voltage:	No Load:	Full Load:
115 VAC	132 VAC	112 VAC
230 VAC	264 VAC	224 VAC

## Resistance:

Field Coils— $2.27 \pm .12$  ohms  
Armature—Less than 1 ohm ring to ring

**Excitation Voltage: Approximately**  
28 Volts D.C.

## Separately Excited:

12 VDC to Positive Field Lead, 50 to 70 VAC output

NOTE: Remove positive DC brush. Unit will have to be started manually.

## BASIC TEST PROCEDURE:

Refer to illustration for component location by Reference Number.

Example: No output—Check field coils for opens or shorts. Reference Numbers 441A and 441B

## No Output:

- Check for loose or open connections.
- Check field coils for opens or shorts. Reference Numbers 441A and 441B
- Check brushes for wear, proper seating and not stuck in holder. Reference Numbers 446 and 447
- Check armature for opens or shorts. Reference Number 431

## Low Voltage—No Load:

- Check generator speed/frequency (3600 RPM nominal).
- Check for loose or open connections.
- Check winding resistance. Reference Numbers 441A-441B and 431

## Low Voltage—Full Load:

- Check generator speed/frequency (3600 RPM nominal).
- Check generator load.
- Check for loose or open connections.
- Check winding resistance. Reference Numbers 441A-441B and 431

SS winding 1173

**WINCO**<sup>®</sup>

Division of  
**DYNA TECHNOLOGY, INC.**  
225 South Cordova  
Le Center, MN 56057  
Phone (612) 357-6821  
Telex 000752