

Wiring Diagram C54136
 Schematic N/A
 Generator Parts
 Unassembled A58380
 Complete Unit
 Part # C58383

 REPAIR
 PARTS LIST
 #

Size 4000 Watts
 Drive Direct
 Type Two Pole
 Unit Model # P4BH-3E/D

<u>DESCRIPTION</u>	<u>PART #</u>	<u>QTY.</u>
Armature	55317-1	1
Armature Bearing	55223	1
Armature Thru Bolt	23197-7	1
Fan Assy.	55101	1
Fan Washer	23558	1
Fan Lockwasher	55224	1
Fan Nut	23605	1
Field Coil	55422	1
Field Coil	55422-1	1
Shell & Bracket Assy.	55417	1
Pole Shoe	23207	2
Pole Shoe Retainer	23208	2
Engine Adaptor Bracket	54178	1
Adaptor Bracket Screw	3290	4
End Cover Assy.	55368	1
End Cover Receptacle	53636	2
End Cover Receptacle	55253	1
Brush Rack Assy. (Complete)	55423 & -1	1 1
A. C. Brush	23607	6
A. C. Brush Holder	23500	6
D. C. Brush	41393	2
D. C. Brush Holder	41744	1
& Plate Assy.	& -1	1
A. C. Condenser	41221	2
D. C. Condenser	41180	1
Resistor (Charge)	55425	1
Start Switch	2210	1
Cradle	58363-1	1
Rubber Feet	20191	3
Shock Mounts	23623	4

ENGINE MAKE Briggs & Stratton MODEL # 190432 PART # 55177

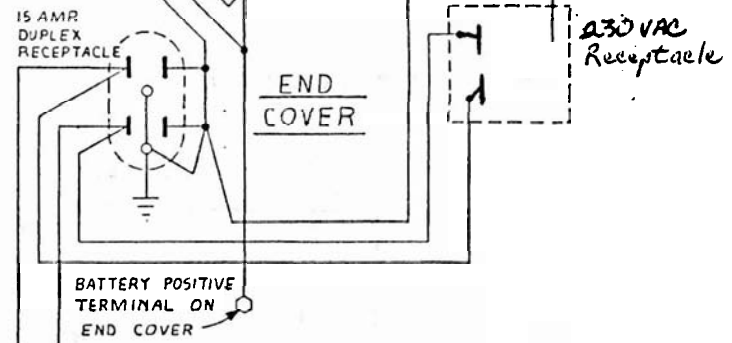
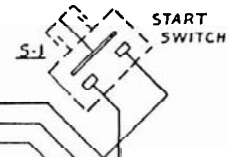
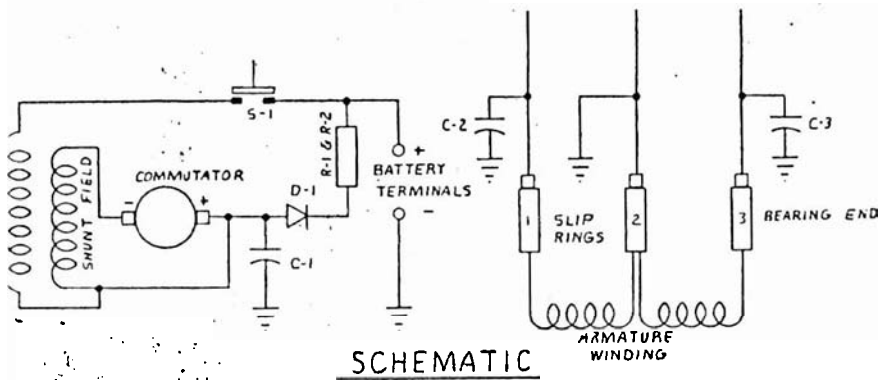


Division of Dyna Technology, Inc.
 225 South Cordova St. / LE CENTER, MINNESOTA 56057
 Phone: (612) 357-6821

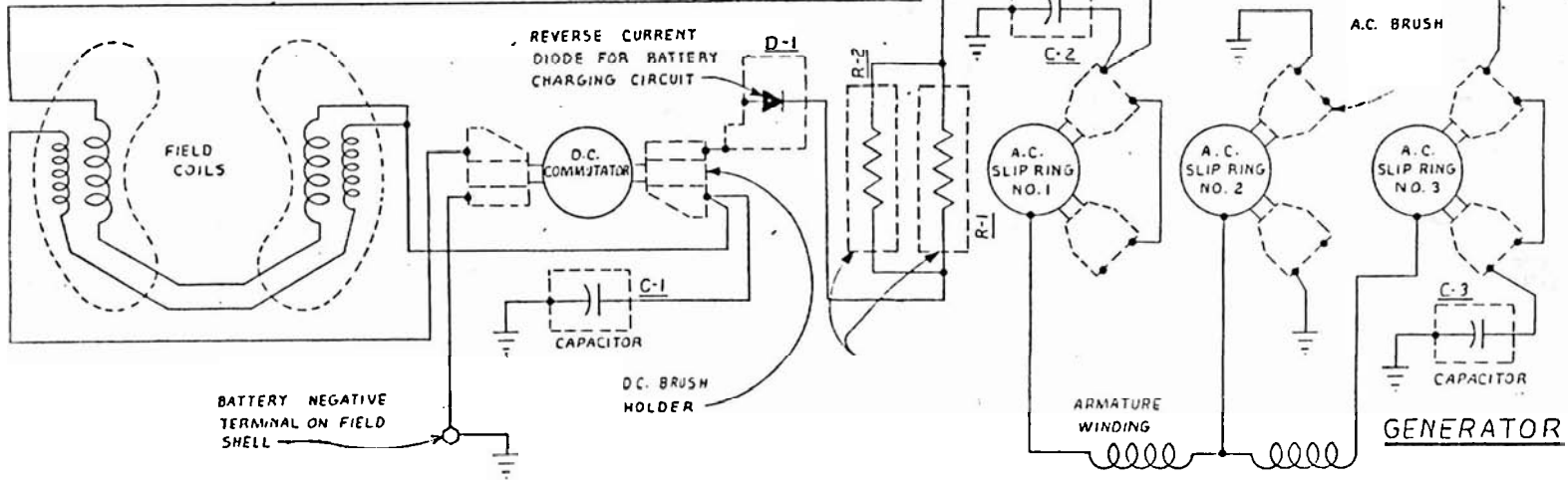
RPL#

Jul. 79

TO RECEPTACLES,

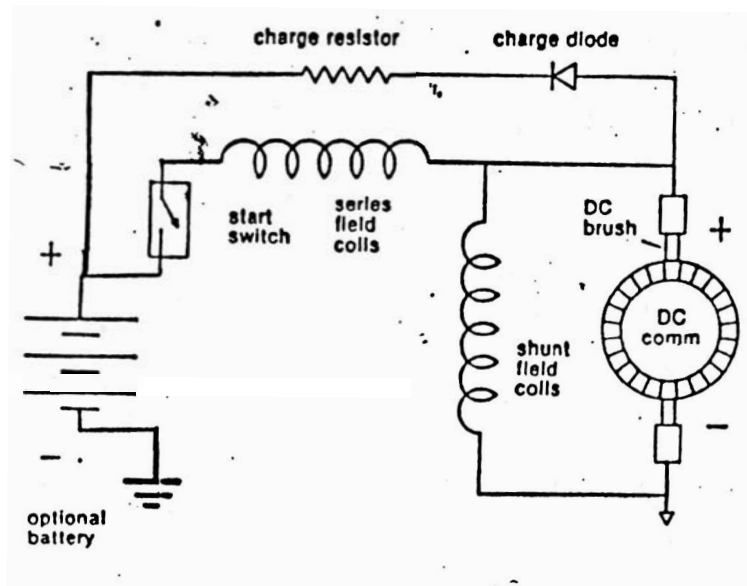


230 VAC Receptacle

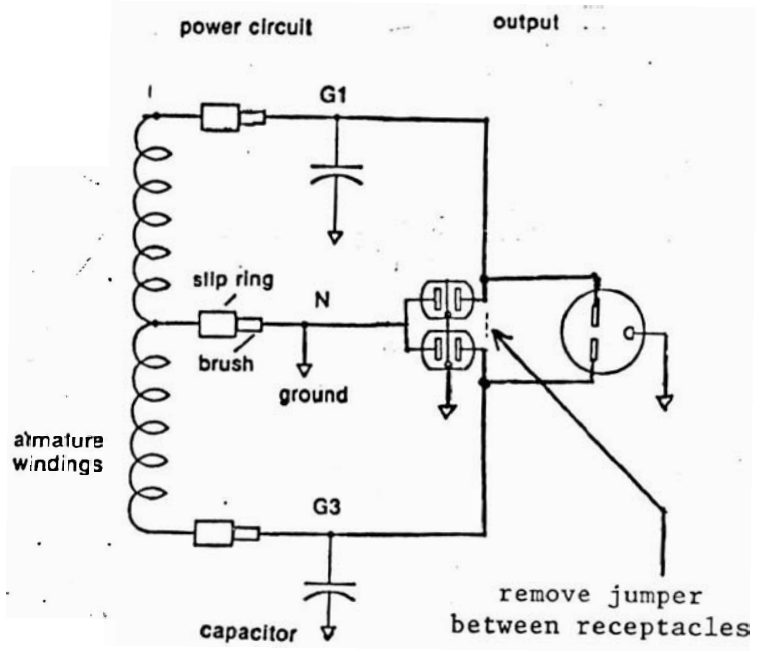


54136

battery and charge circuit



excitation circuit



SCHEMATIC WIRING DIAGRAM