

Wiring Diagram C57093
 Schematic N/A
 Generator Parts
 Unassembled C57093
 Complete Unit
 Part # C57094

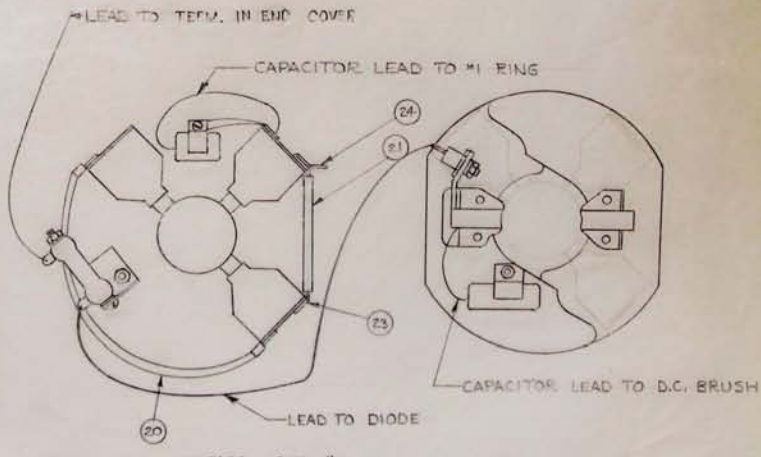
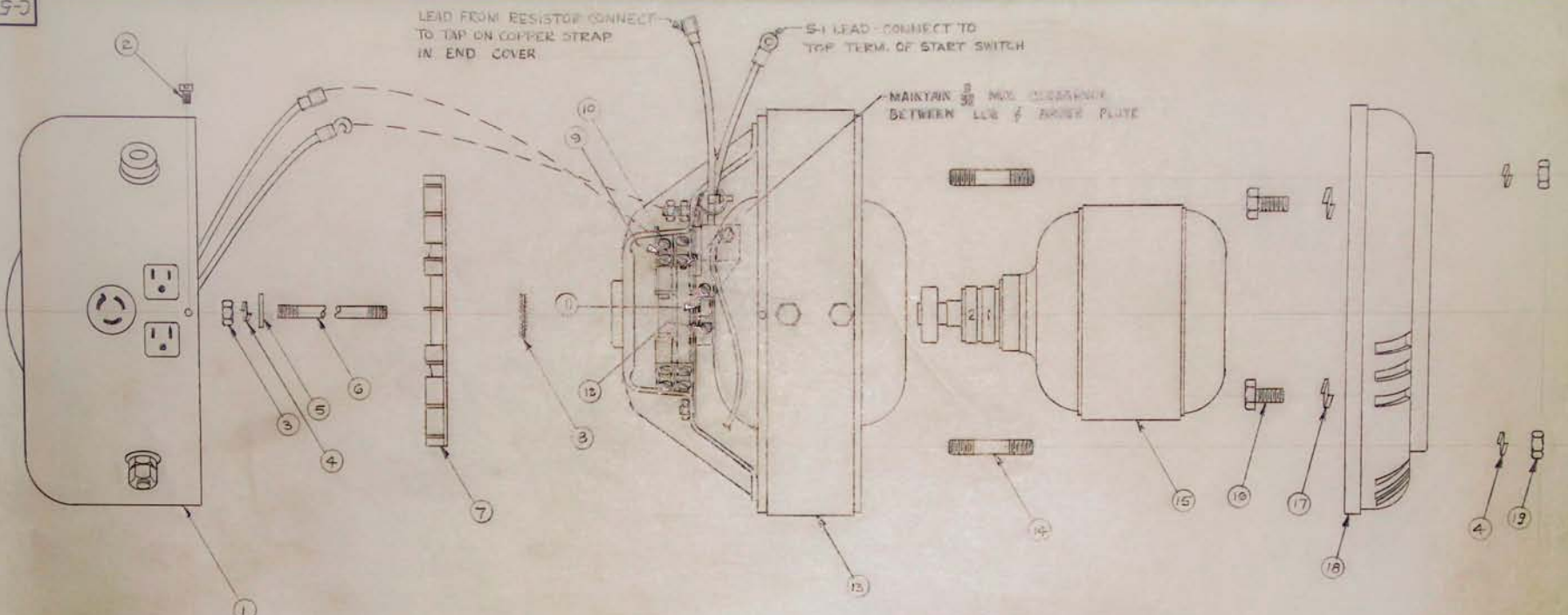
 REPAIR
 PARTS LIST
 #526

Size 3700 Watts
 Drive Direct
 Type Two Pole
 Unit Model # P307BH-1E/A

<u>DESCRIPTION</u>	<u>PART #</u>	<u>QTY.</u>
Armature	56945-1	1
Armature Bearing	55223	1
Armature Thru Bolt	23197-2	1
Fan Assembly	55101	1
Fan Washer	23558	1
Fan Lockwasher	55224	1
Fan Nut	23605	1
Field Coil	57105	1
Field Coil	57105-1	1
Shell & Bracket Assy.	53722	1
Pole Shoe	24851	2
Pole Shoe Retainer	24849	2
Engine Adaptor Bracket	54178	1
Adaptor Bracket Screw	3290	4
End Cover Assy.	55998	1
End Cover Receptacle	53636	2
End Cover Receptacle (230V)	56000	1
Brush Rack Assy. (Complete)	57088 & -1	1 1
A. C. Brush	23607	6
A. C. Brush Holder	23500	6
D. C. Brush	41393	2
D. C. Brush Holder	41744	1
& Plate Assy.	& -1	1
A. C. Condenser	41221	1
D. C. Condenser	41180	1
Resistor (Charge)	56811	1
Heat Sink	54733	1
Cradle	43297-1	1
Shock Mounts	23623	4
Rubber Feet	20191	3

ENGINE MAKE Briggs & Stratton MODEL # 190432 PART # 55177

660793



24	A-53643	1	TERMINAL
23	A-41827	1	COPPER STRAP
22			
21	A-46254-1	1	INSULATION SLEEVING
20	R-5212F-37	1	LEAD WIRE ASSY
19	458	4	HEX NUT
18	C-54178	1	END BRACKET
17	481	4	LOCKWASHER
16	3250	4	HEX. HD. SCREW
15	B-56945	1	ARCHITECTURE BEARING ASSY
14	A-23451	4	STUD
13	C-57092	1	FIELD SHELL & COILS ASSY
12	4637	3	SCREW
11	A-41333	2	BRUSH ASSY D.C.
10	40746	12	SCREW
9	A-23607	6	BRUSH ASSY AC.
8	A-55224	1	LOCKWASHER
7	B-55101	1	FAN ASSY
6	A-23197-2	1	SPECIAL STUD
5	A-23558	1	FLAT WASHER
4	480	5	LOCKWASHER
3	23605	1	HEX NUT
2	A-53644	2	SCREW
1	C-55398	1	END COVER ASSY

ITEM	PART NO.	QUAN.	NAME	DETAILS	ISSUE	REVISION	DATE	BY	AUTH.
					1	ORIGINAL			

ALL DIMENSIONS GIVEN IN INCHES—WORK TO DIMENSIONS—DO NOT SCALE—SAMPLES MUST BE APPROVED BY DYNA TECHNOLOGY ENGINEERING DEPT BEFORE PROCESSING WITH PRODUCTION — TOLERANCES (UNLESS OTHERWISE SPECIFIED): FRACTIONS ± 1/64 DECIMALS ± .005 PUNCHED HOLES ± .004 — .000

DRAWN BY	DATE	CHKD BY	DATE	APPRD BY	DATE	SCALE
KPJ	8-22-75	MM	9-5-75	MM	10-21-75	1/2"=1"

MATERIAL

FINISH	ASSY	MODEL	GENERATOR PARTS UNASSEMBLED
	C-57094	P36784-1E/A	

DYNA TECHNOLOGY, INC.
STIOUX CITY, IOWA

C-57093