

Wiring Diagram	<u>N/A</u>	***** REPAIR PARTS LIST #530 *****	Size	<u>3500 Watts</u>
Schematic	<u>N/A</u>		Drive	<u>Direct</u>
Generator Parts			Type	<u>Two Pole</u>
Unassembled	<u>C55313</u>		Unit Model #	<u>P305BH-3M/B</u>
Complete Unit				
Part #	<u>C55330</u>			

<u>DESCRIPTION</u>	<u>PART #</u>	<u>QTY.</u>
Armature	55106-1	1
Armature Bearing	55223	1
Armature Thru Bolt	23197-2	1
Fan Assy.	55101	1
Fan Washer	23558	1
Fan Lockwasher	55224	1
Fan Nut	23605	1
Field Coil	55378	1
Field Coil	55378-1	1
Shell & Bracket Assy.	53722	1
Pole Shoe	24851	2
Pole Shoe Retainer	24849	2
Engine Adaptor Bracket	54178	1
Adaptor Bracket Screw	3290	4
End Cover Assy.	55140	1
End Cover Receptacle	53636	2
End Cover Receptacle (115V)	55253	1
Brush Rack Assy. (Complete)	55247 & 55247-1	1 1
A. C. Brush	23607	6
A. C. Brush Holder	23500	6
A. C. Condenser	54977	1
A. C. Condenser	41221	1
Excitation Rectifier & Plate Assy.	55495	1
Spring Feet	55096	4
Handle	53740	1

ENGINE MAKE Briggs & Stratton MODEL # 190432 PART # 55177



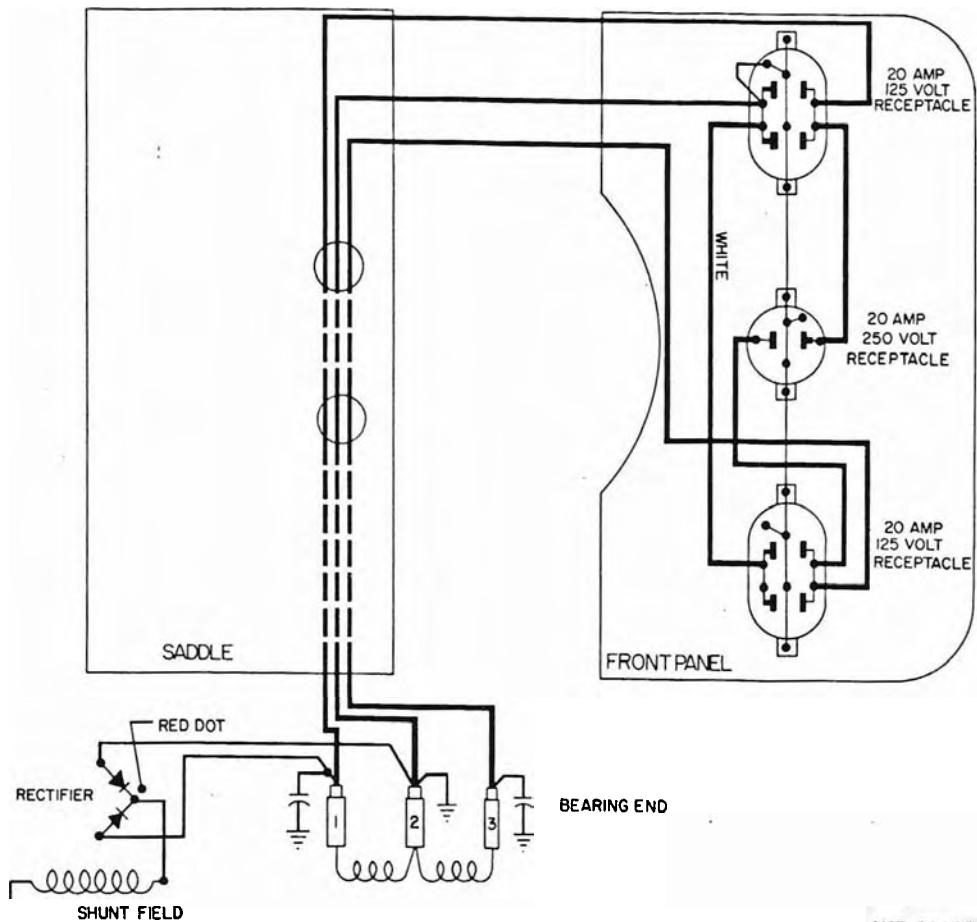
Division of Dyna Technology, Inc.

225 South Cordova St. / LE CENTER, MINNESOTA 56057

Phone: (612) 357-6821

RPL#530

Feb. 78



WD-59069