

ILLUSTRATED PARTS LIST

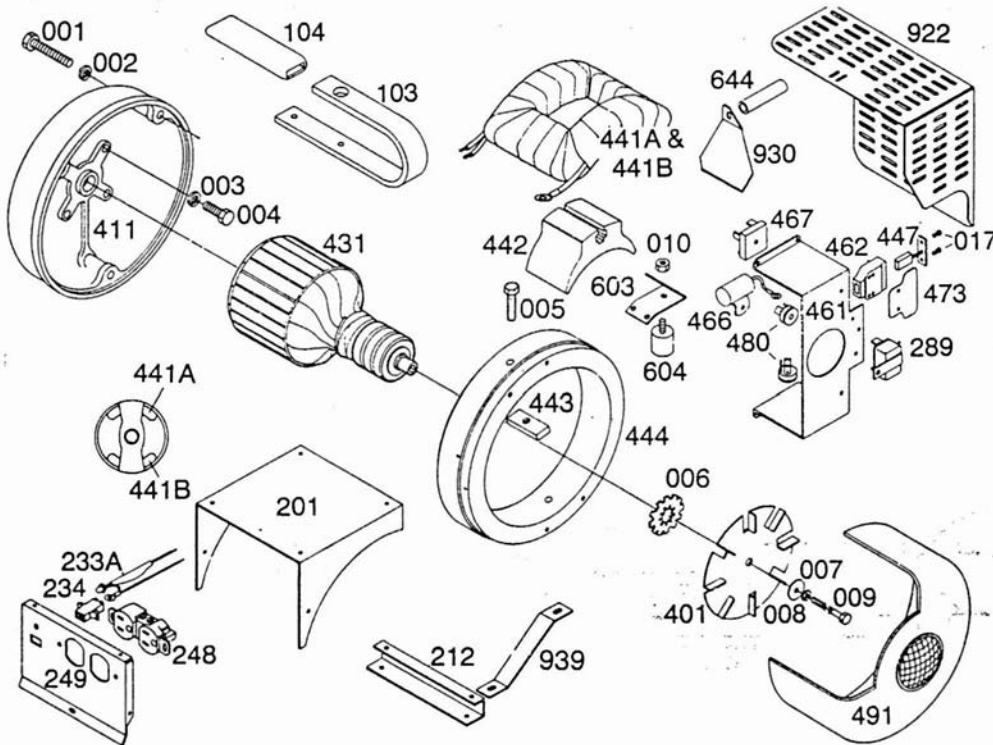


Figure 1 — Replacement Parts Illustration

61644-0 Bat. Cable Assy

Replacement Parts List for Model K900

REF. NO.	PART NO.	QTY.	DESCRIPTION	REF. NO.	PART NO.	QTY.	DESCRIPTION
001*	1679	3	Capscrew 1/4" - 20 x 1 1/2"	411	61586	1	End bracket
002*	479	3	Lockwasher 1/4" split	431	61634	1	Armature
003*	93344	4	Capscrew 8 x 1.25 x 20mm	441A	61738	1	Field coil
004*	480	4	Lockwasher 5/16" split	441B	61738-1	1	Field coil
005*	91672-6	2	Capscrew 5/16" - 18 x 1 1/2"	442	61629	2	Pole shoe
006	61673	1	Lockwasher	443	61628	2	Pole shoe retainer
007*	488	1	Flatwasher 3/16"	444	61584	1	Field shell
008*	479	1	Lockwasher 1/4" split	447	23607	3	Brush assembly
009	75139-123	1	Special thurbolt	461	61546	1	Brush mounting plate
010*	61773	4	Locknut 1/4" -20	462	59690	3	Brush holder
017*	40746	6	Machine screw #8-32 x 5/16"	466	41221	1	AC condenser
103	61621	1	Handle	467	53976	1	Rectifier (full wave)
104	57503-1	1	Handle grip	473	59688	5	Barrier spacers
201	61627	1	Cover	480	61663	1	Rectifier (half wave)
212	61693	1	Control box back	491	61631	1	End cover
233A	61658	1	LED assembly	603	61623	2	Mounting feet
234	61641	1	Battery plug	604	61660	4	Rubber feet
248	24749	1	Duplex receptacle	644	61692	2	Spacer
249	61626-2	1	Front panel bare	922	61690	1	Muffler guard
289	91940	1	Circuit breaker	930	61622	1	Muffler bracket
401	61637	1	Fan	939	61691	1	Muffler guard brace

* Standard hardware items, available locally

DYNAMIGHT WIRING DIAGRAM

