

ILLUSTRATED PARTS LIST

Kawasaki Engine
Model: FA130

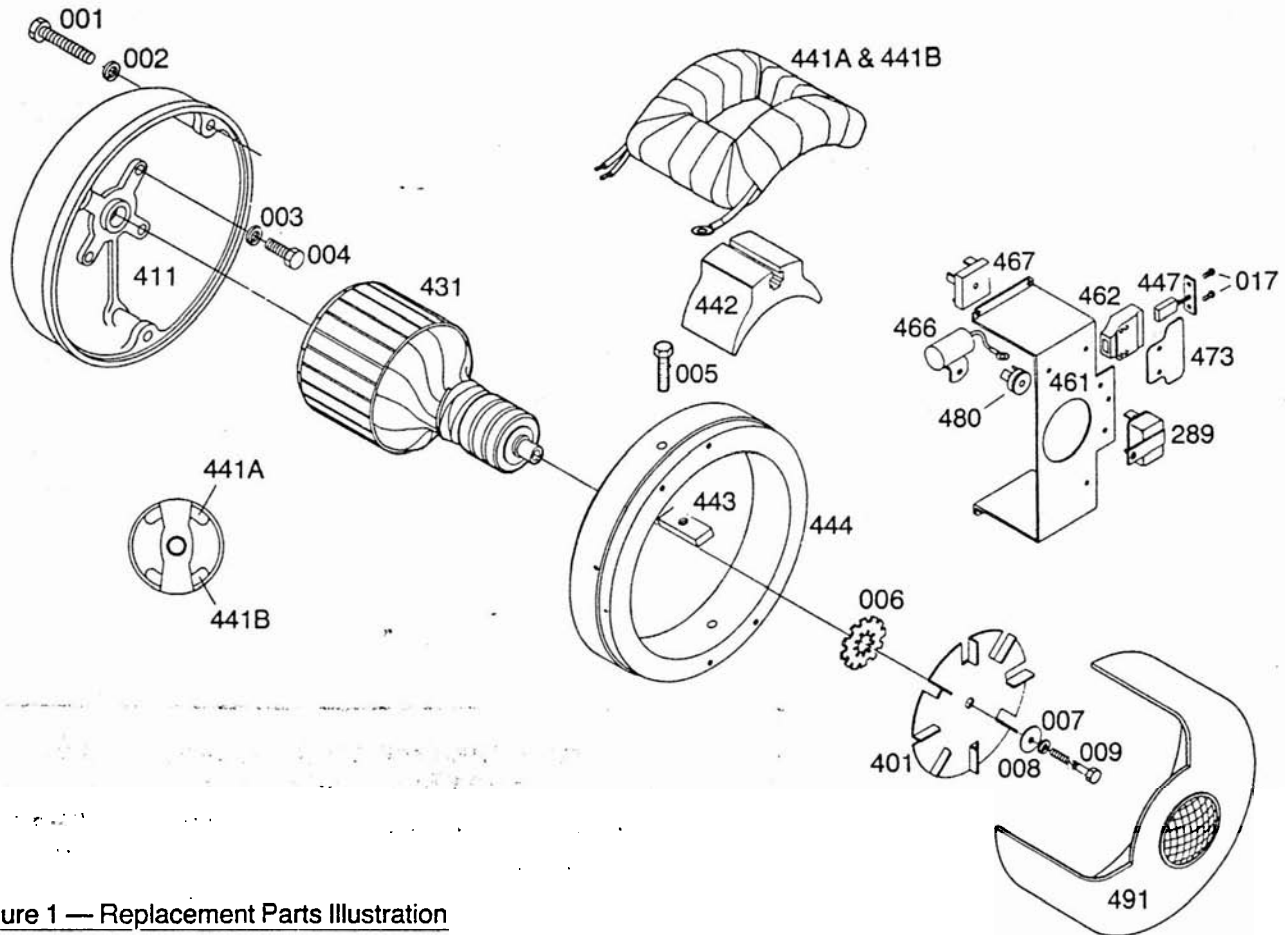


Figure 1 — Replacement Parts Illustration

Replacement Parts List for Model K1600, K1800/B

REF. NO.	PART NO.	QTY.	DESCRIPTION	REF. NO.	PART NO.	QTY.	DESCRIPTION
001*	20544	3	Capscrew 1/4" - 20 x 1 3/4"	441A	61741	1	Field coil
002*	479	3	Lockwasher 1/4" Split	441B	61741-1	1	Field coil
003*	480	4	Lockwasher 5/16 Split	442	23804		Pole shoe
004*	55576	4	Capscrew 5/16" - 24 x 7/8"	443	53269		Pole shoe retainer
005*	91658-3	2	Capscrew 3/8" - 16 x 1 1/2"	444	61736	1	Field shell
006	55524	1	Lockwasher	447	23607	3	Brush assembly
007	23558	1	Flatwasher	461	61546	1	Brush mounting plate
008*	480	1	Lockwasher 5/16" Split	462	59690	3	Brush holder
009	23197-2	1	Special thurbolt	466	41221	1	AC condenser
017*	40746	6	Machine screw #8-32 x 5/16	467	53976	2	Rectifier (full wave)
289	91940-1	1	Circuit breaker	473	59688	5	Barrier spacers
401	61637-1	1	Fan	480	61663	1	Rectifier (half wave)
411	43887	1	End bracket	491	61631	1	End cover
431	61735	1	Armature				

*Standard hardware items, available locally

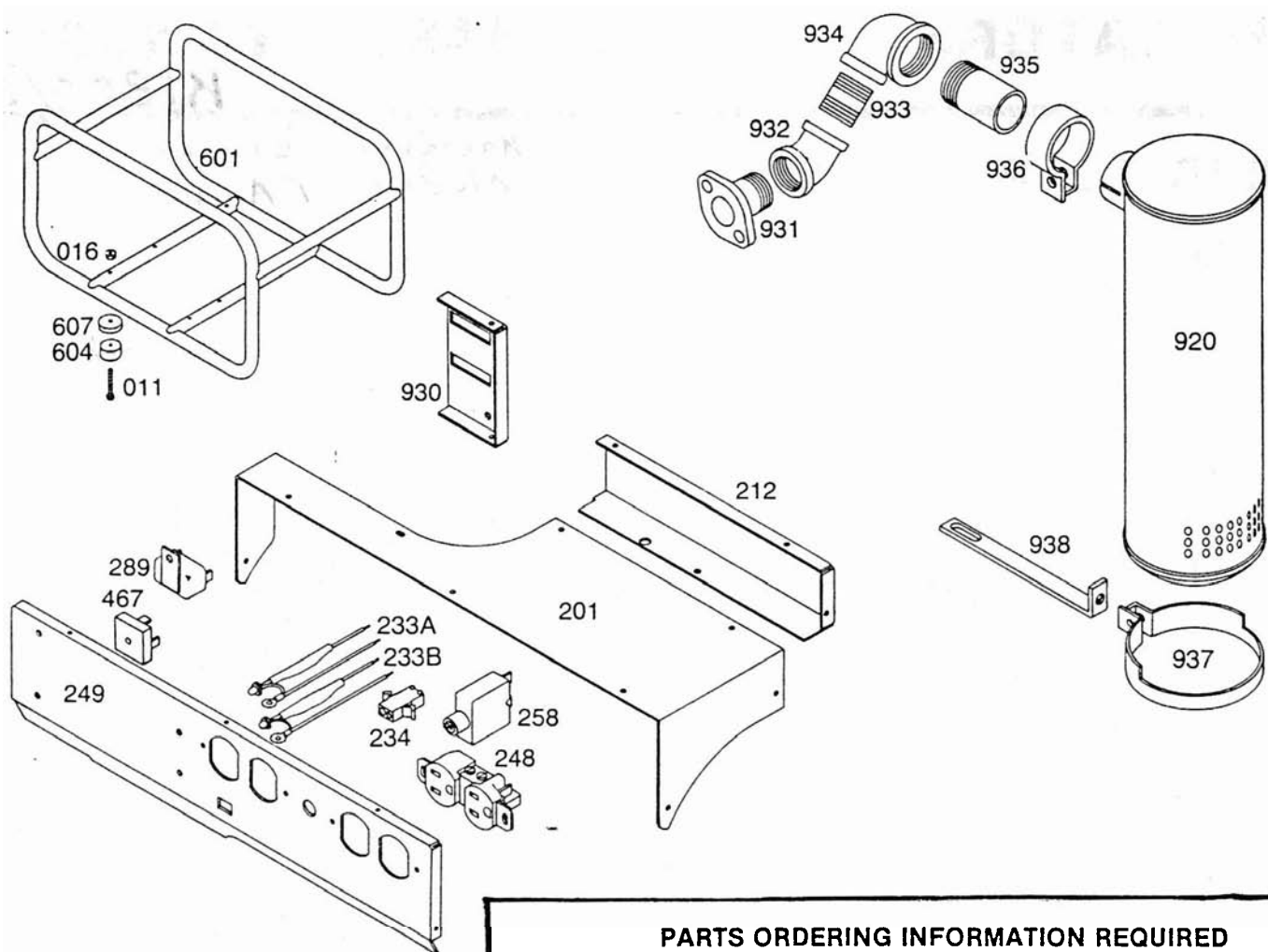


Figure 2 — Replacement Parts Illustration

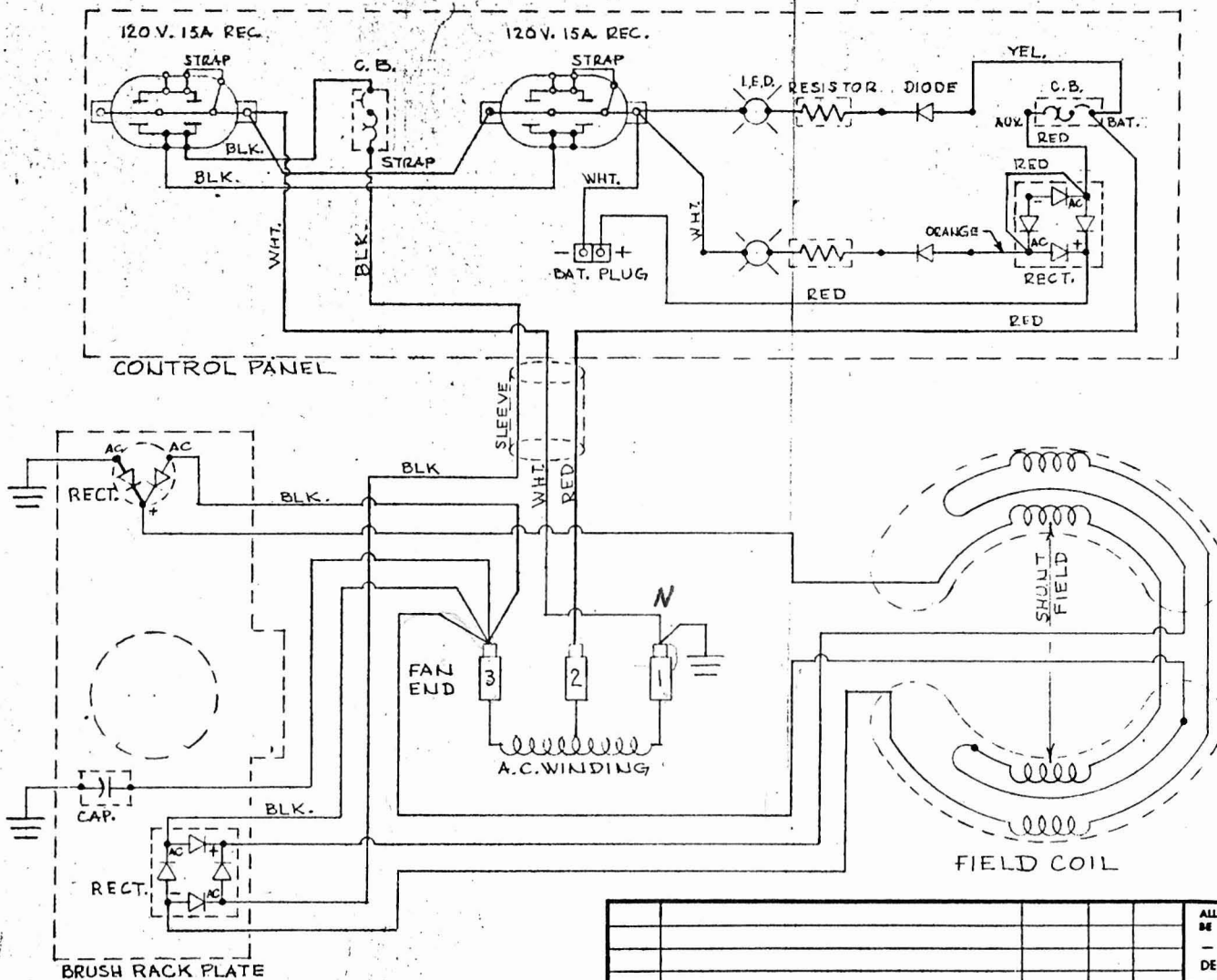
PARTS ORDERING INFORMATION REQUIRED

To fill your order for service parts, please advise the complete Generator model number and serial number, part number(s), and part description. If in doubt, consult the factory prior to placing the order. Send all parts orders to WINCO, Division of Dyna Technology, Inc., 225 South Cordova Ave., Le Center, MN 56057.

Replacement Parts List for Model K1600, K1800/B

REF. NO.	PART NO.	QTY.	DESCRIPTION	REF. NO.	PART NO.	QTY.	DESCRIPTION
009A*	23605	1	Nut 5/16" - 24 (not illustrated)	604	20191	4	Rubber feet
011*	20667-1	4	Capscrew 1/4" - 20 x 1 3/4	607	21077	4	Steel cap
016*	61773	4	Locknut 1/4 - 20	920	61829	1	Muffler 63639-000
201	61832	1	Cover	930	61829	1	Control box bracket
212	61830	1	Control box back	931	61862	1	Flange assembly
233A	61871	1	LED assembly	932	40072	1	Elbow
233B	61871	1	LED assembly: 61872-400	933	22768	1	Pipe nipple
234	61641	1	Battery plug	934	61863	1	Elbow
248	24749	2	Duplex receptacle	935	59312-5	1	Pipe nipple
249	61831-1	1	Front panel bare	936	61860	1	Exhaust clamp
258	91286	1	Circuit breaker	937	61859	1	Muffler clamp
601	61845	1	Cradle assembly	938	61858	1	Muffler brace

* Standard hardware items, available locally



RELEASED FOR PRODUCTION
 MAR 26 1984
 DYNA TECHNOLOGY, INC

ALL DIMENSIONS GIVEN IN INCHES—WORK TO DIMENSIONS—DO NOT SCALE—SAMPLES BE APPROVED BY DYNA TECHNOLOGY ENGINEERING DEPT BEFORE PROCEEDING WITH PRODU									
— TOLERANCES (UNLESS OTHERWISE SPECIFIED): FRACTIONS ± DECIMALS ± .005 PUNCHED HOLES + .004 — .000 ANGLES ± 1°									
DRAWN BY	DATE	CHK'D BY	DATE	APP'D BY	DATE				
D.F.L.	2-2-83	B.P.W.	2-10-83	B.P.W.	2-10-83				
MATERIAL									
FINISH									
ASSY	B-61849				WIRING DIAGRAM				
MOOR	K1600								
1 ORIGINAL									
ISSUE	REVISION				DATE		BY AUTH.		
Division of DYNA TECHNOLOGY, INC. LeCenter, MN 56057									
B-61892									

