

TECHNICAL DATA

GENERATOR SPECIFICATIONS:

Watts—5300; Volts—115/230; Amps.—23; PH—1; Hz:60; RPM—3600

Nominal Voltage:	No Load:	Full Load:
115 VAC	132 VAC	112 VAC
230 VAC	264 VAC	224 VAC

Resistance:

Field Coils— $9.5 \pm .5$ ohms
Armature—Less than 1 ohm ring to ring

Excitation Voltage: Approximately

55 Volts D.C.

Separately Excited:

12 VDC to Positive Field Lead (Disconnected from rectifier)
50 to 70 VAC Output

BASIC TEST PROCEDURE:

Refer to illustration for component location by Reference Number.

Example: No output—Check field coils for opens or shorts. Reference Numbers 441A and 441B

No Output:

- Check for loose or open connections.
- Check rectifier, located on Reference Number 465.
- Check field coils for opens or shorts. Reference Numbers 441A and 441B.
- Check brushes for wear, proper seating and not stuck in holder. Reference Number 447.
- Check armature for opens or shorts. Reference Number 431.

Low Voltage—No Load:

- Check generator speed/frequency (3600 RPM nominal).
- Check for loose or open connections.
- Check winding resistance. Reference Numbers 441A-441B and 431.

Low Voltage—Full Load:

- Check generator speed/frequency (3600 RPM nominal).
- Check generator load.
- Check for loose or open connections.
- Check winding resistance. Reference Numbers 441A-441B and 431.

SS 1165

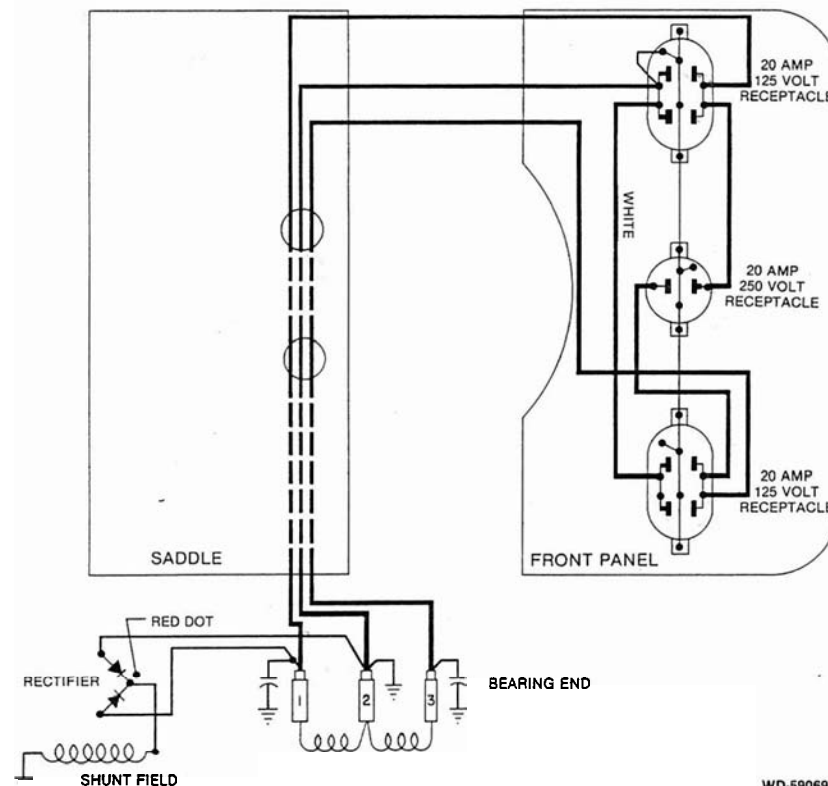
WINGCO[®]

GENERATORS

(20) 3600 RPM INDUSTRIAL

MODEL IP503BH-3M/D

ILLUSTRATED PARTS LIST



WD-59069

SCHEMATIC DIAGRAM

This IPL contains wiring, illustration, parts list, ordering information and technical data to perform routine maintenance on this generator. Consult factory with model no., serial no. and test data for further assistance.

WINGCO[®]

Division of
DYNA TECHNOLOGY, INC.
225 South Cordova
Le Center, MN 56057
Phone (642) 357-6821
Telex 290753

PN 60701-005

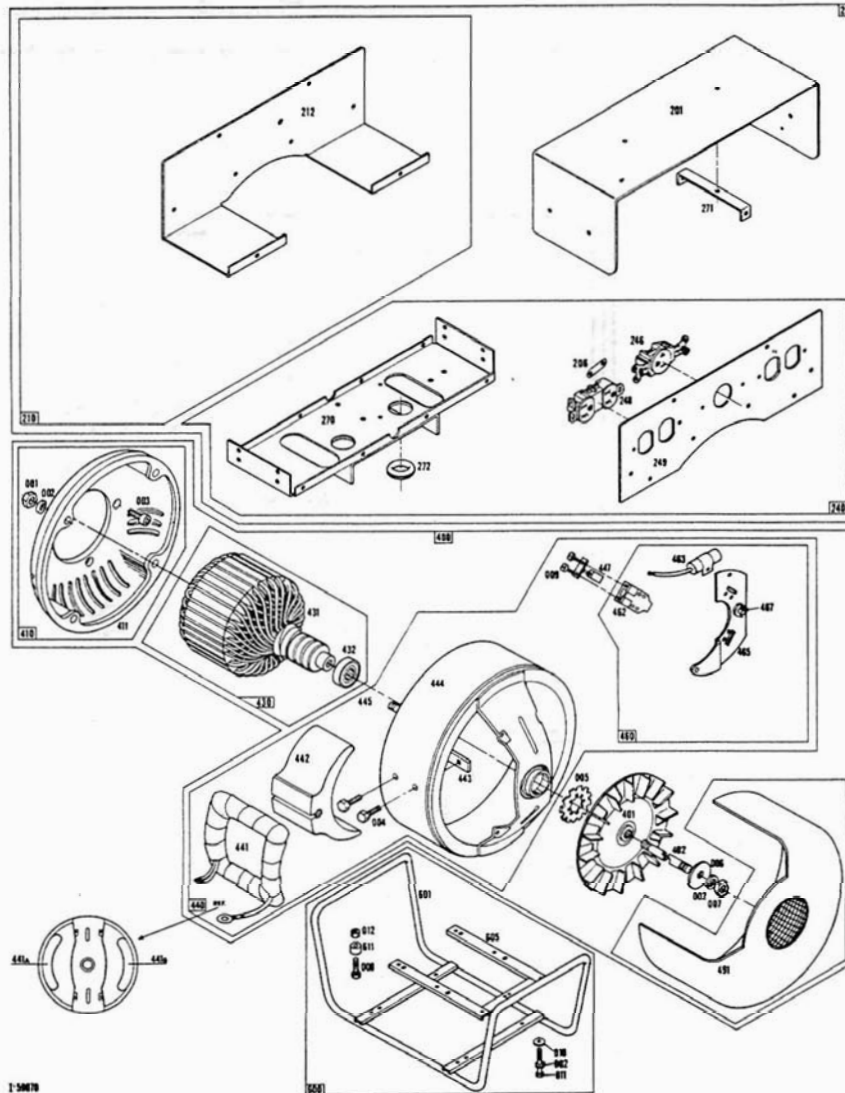
507-357-6831

WINGCO POWER PLANTS—Over 45 Years of Leadership

WPL
20-005-081

WINCO

MODEL IP503BH-3M/D



REF. NO.	DESCRIPTION	QTY.	PART NO.	REF. NO.	DESCRIPTION	QTY.	PART NO.
000	Hardware			430	Armature Assembly	1	55318
001	Hex Nut 5/16-18	6	458	431	Armature	1	55318-1
002	Lockwasher 5/16 Split	6	480	432	Bearing	1	55223
003	Screw	4	3290				
004	Cap Screw	4	9416	440	Field Shell & Coil Ass'y	1	55416-2
005	Lockwasher Int. Tooth	1	55224	441A	Field Coil	1	55361
006	Flatwasher 11/32 ID x 1 OD	1	23558	441B	Field Coil	1	55361-1
007	Hex Nut 5/16-24	1	23605	442	Pole Shoe	2	23207
008	Cap Screw 5/16-18 x 2 1/2	4	1720	443	Pole Shoe Retainer	2	23208
009	Machine Screw 8-32 x 5/16	12	40746	444	Field Shell	1	59067
010	Flat Washer 1/2	1	23760	445	Stud	4	23451
011	Cap Screw 5/16-18-3/4	1	467	447	Brush	6	23607
012	Hex Nut 5/16-18	4	47136	460	Brush Rack Ass'y	1	55247
100	Type Drive Engine B & S 252412-0178-01	1	57965	462	Brush Holder*	6	59690
200	Control Panel	1	59068	463	Capacitor	2	41221
201	Cover	1	59073	465	Brush Mounting Plate	1	55107
206	Ground Strap	1	41387-2	467	Rectifier (Excitation)	1	54976
212	Rear Panel	1	59074	473	Barrier Spacer**	6	59588
240	Front Panel Ass'y	1	59071	491	End Cover	1	55007
246	Receptacle 230V	1	57642	600	Cradle Assembly		
248	Receptacle Duplex	2	50766	601	Cradle	1	57906
249	Front Panel (Bare)	1	59072	605	Subframe	1	57963
270	Saddle	1	56926	611	Rubber Foot	8	20191
271	Brace	2	51576				
272	Rubber Grommet	1	56927				
400	Generator		59066				
401	Fan Assembly	1	55101				
402	Thru Bolt	1	23197-7				
411	End Bracket	1	54178				

PARTS ORDERING INFORMATION REQUIRED

To fill your order for service parts, please advise the complete Generator model number and serial number, part number(s), and part description. If in doubt, consult the factory prior to placing the order. Send all parts orders to WINCO, Division of Dyna Technology, Inc., 225 South Cordova Ave., Le Center, MN 56057.