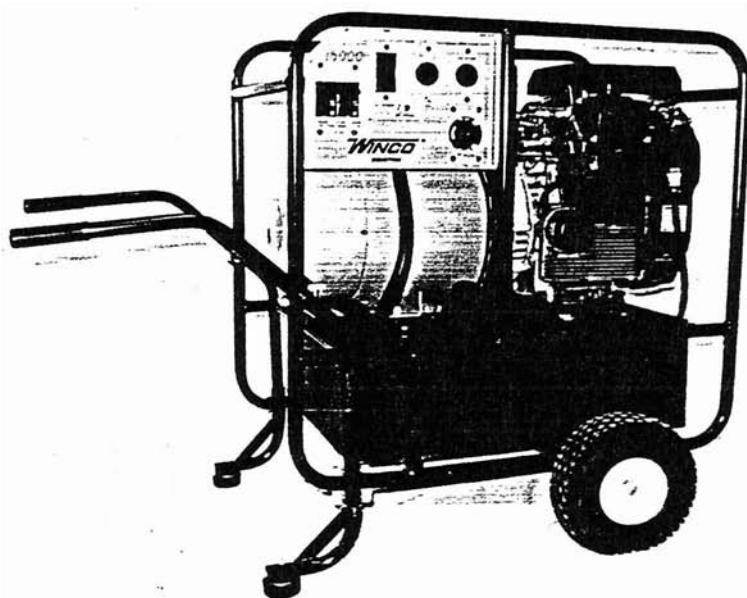


WINCO

HD15000KE/A

63200-001

- * MAXIMUM WATTS - 15,000
- * CONTINUOUS WATTS - 13,500
- * 120/240 VOLT SINGLE PHASE OUTPUT
(3-PHASE AVAILABLE BY SPECIAL ORDER)
- * VIBRATION-ISOLATED ENGINE/GENERATOR SET
- * 25 H.P. KOHLER OHV ENGINE
- * 7.5 H.P. MOTOR STARTING
- * 12 VDC ELECTRIC START
- * LOW OIL SHUTDOWN
- * 12 GALLON FUEL TANK
- * WHEEL KIT AND LIFTING EYE ARE STANDARD FEATURES





HD15000KE

PERFORMANCE & TECHNICAL DATA
ELECTRICAL SPECIFICATIONS

| | |
|-------------------------------|-----------------|
| MAXIMUM POWER RATING | 15000 watts |
| CONTINUOUS POWER RATING | 13500 watts |
| A.C. OUTPUT VOLTAGE | 120/240 volts |
| CONTINUOUS CURRENT RATING (1) | 112.5/56.3 amps |
| MOTOR STARTING ABILITY (2) | 7.5 h.p. |

ENGINE DATA

| | |
|--------------------------|-----------------|
| MAKE/MODEL | KOHLER CH25 OHV |
| DISPLACEMENT | 725 c.c. |
| RATED POWER (3600 rpm) | 25 h.p. |
| STARTING SYSTEM (3) | 12V DC |
| LOW OIL LEVEL SHUTDOWN | Standard |
| FUEL TANK CAPACITY | 12 gallons |
| RUNNING TIME - FULL LOAD | 6.5 hours |
| RUNNING TIME - HALF LOAD | 13.0 hours |

120 VOLT RECEPTACLES

| | |
|-----------------------------|-------------------------|
| STRAIGHT BLADE (NEMA 5-15R) | 4-20 amp GFCI |
| TWIST-LOCK (NEMA L5-20R) | 2-20 amp GFCI Protected |

240 VOLT RECEPTACLES

| | |
|--------------------------|----------|
| TWIST-LOCK (NEMA L6-20R) | 1-20 amp |
|--------------------------|----------|

120 / 240 VOLT RECEPTACLES

| | |
|-------------------------------|----------|
| TEMPOWER LOCKING (ALPHA TYPE) | 1-50 amp |
|-------------------------------|----------|

SPECIAL FEATURES

| | |
|-----------------------------------------|-----------------|
| VIBRATION-ISOLATED ENGINE/GENERATOR SET | Standard |
| ALL-TERRAIN WHEEL KIT | Standard |
| LIFTING EYE KIT | Standard |
| BATTERY RACK AND CABLES (3) | Standard |
| THREE-PHASE VOLTAGE | Contact Factory |

SIZE & WEIGHT

| | |
|------------------------|------------------|
| DIMENSIONS (L x W x H) | 34 x 23 x 32 in. |
| WEIGHT (lbs) | 470 lbs. |

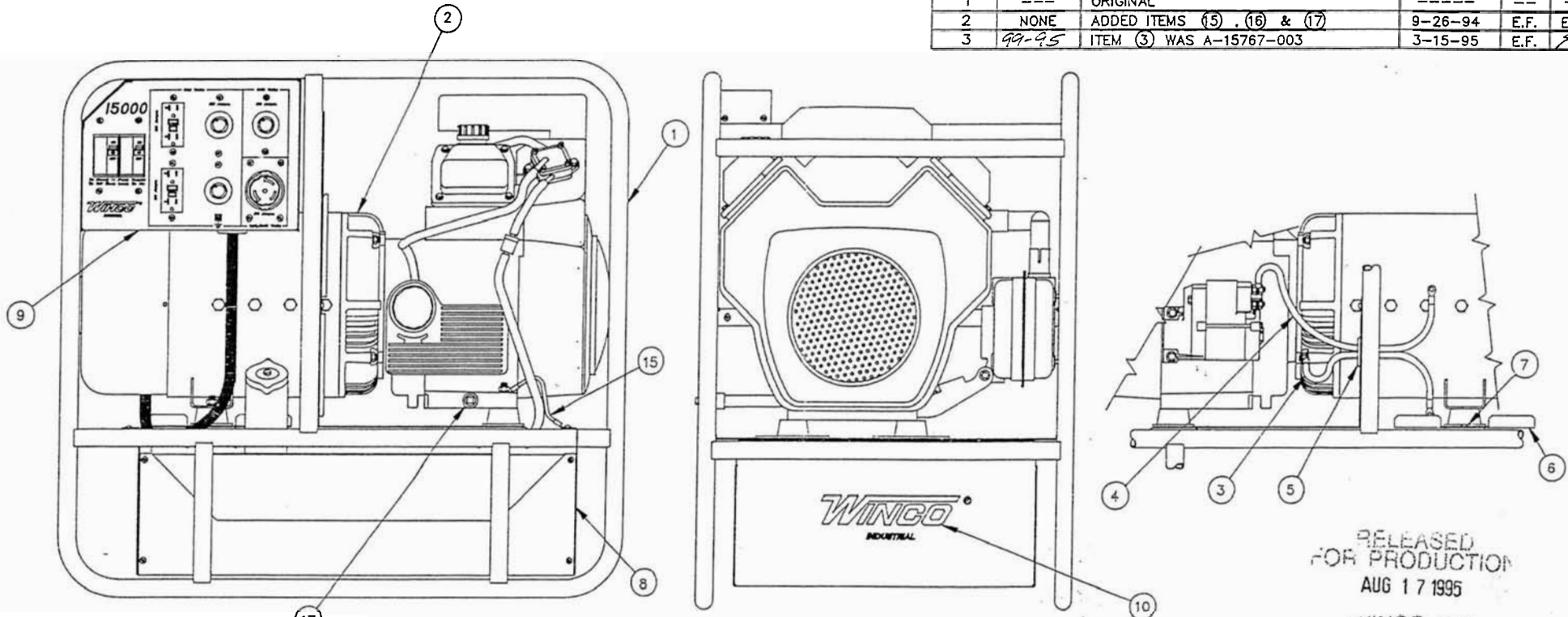
WARRANTY INFORMATION

| | |
|------------------|-----------------|
| GENERATOR/ENGINE | 2 years/2 years |
|------------------|-----------------|

NOTES: 1. 112.5 amps available if load is distributed between two 115-volt windings. 2. Code G. capacitor start motor. 3. Battery not included.

B-63200-001

| REVISION RECORD | | | | |
|-----------------|------------|-------------------------------|---------|----------------|
| ISSUE | E.C.O. NO. | DESCRIPTION | DATE | BY APPR. |
| 1 | --- | ORIGINAL | ---- | --- |
| 2 | NONE | ADDED ITEMS (15), (16) & (17) | 9-26-94 | E.F. E.F. |
| 3 | 99-95 | ITEM (3) WAS A-15767-003 | 3-15-95 | E.F. <i>EF</i> |



RELEASED FOR PRODUCTION
AUG 17 1995
WINGCO INC.

USE OIL DRAIN PLUG FROM ENGINE (16)

NOTES:

- FOR OUTLINE DRAWING SEE A-15200-001
- FOR EASE OF ASSEMBLY FOLLOW THE NUMERICAL ARRANGEMENT OF INSTALLATION DRAWINGS TO BUILD UNIT.
- DOLLY KIT, LIFTING EYE & BATTERY HOLD DOWN KIT, ITEMS (12), (13) & (14) ARE NOT TO BE INSTALLED ON UNIT BUT SHIPPED INSIDE CARTON.

| 17 | A-21857-000 | 1 | 3/8" PIPE COUPLING |
|------|-------------|-------|------------------------------------------|
| 16 | A-53244-009 | 1 | 3/8" X 5.00" PIPE NIPPLE |
| 15 | B-9769-151 | 1 | LEAD WIRE ASSEMBLY |
| 14 | B-15295-001 | 1 | BATTERY HOLD DOWN KIT |
| 13 | B-64441-001 | 1 | LIFTING EYE PARTS AND INSTALLATION |
| 12 | B-43748-001 | 1 | DOLLY KIT PARTS AND INSTALLATION |
| 11 | A-64668-001 | 1 | LITERATURE PACKAGE & SHIPPING CONTAINER |
| 10 | B-15715-003 | 1 | DECAL AND NAMEPLATE INSTALLATION DETAILS |
| 9 | B-63308-003 | 1 | RECEPTACLE BOX INSTALLATION |
| 8 | B-63304-001 | 1 | FUEL SYSTEM INSTALLATION |
| 7 | A-21698-001 | 2 | #10 X 3/8 SELF TAPPING SCREW (BLACK) |
| 6 | B-62930-001 | 1 | BATTERY TRAY |
| 5 | A-62486-000 | 1 | GROMMET |
| 4 | A-15767-004 | 1 | POSITIVE BATTERY CABLE |
| 3 | A-15767-005 | 1 | NEGATIVE BATTERY CABLE |
| 2 | B-63309-002 | 1 | ENGINE GENERATOR SET INSTALLATION |
| 1 | B-16013-002 | 1 | CRADLE AND SHOCKMOUNT INSTALLATION |
| ITEM | PART NO | QUAN. | DESCRIPTION |

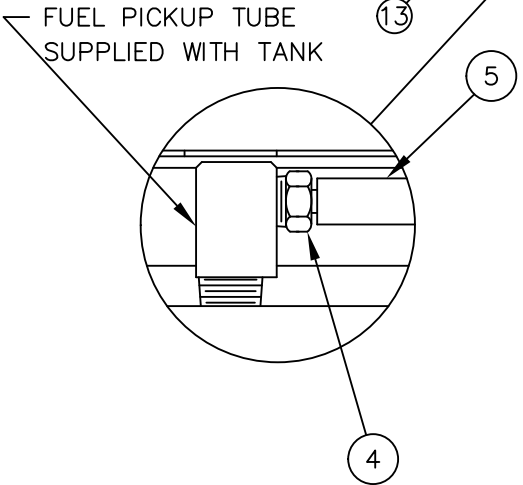
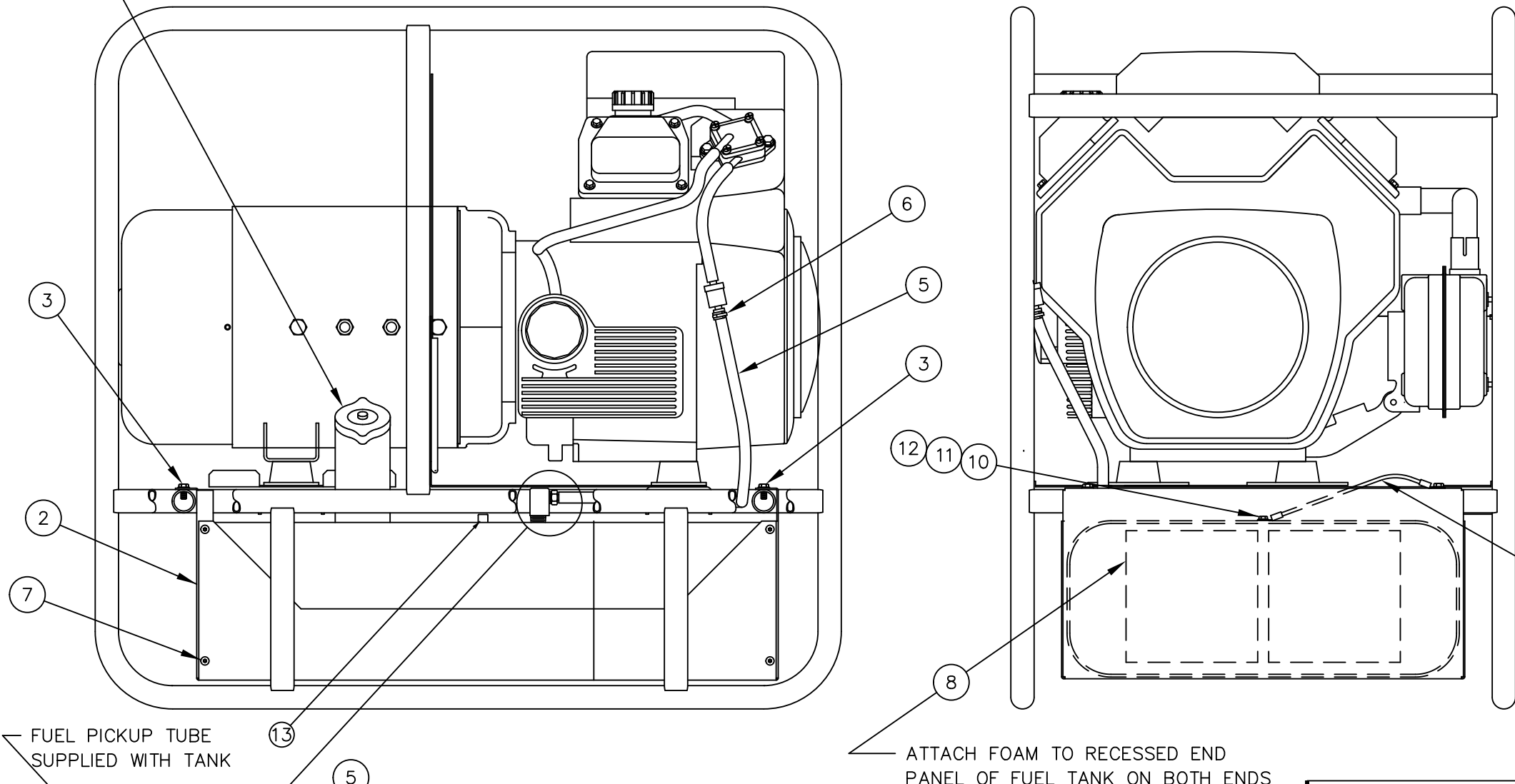
| | | | | | | | |
|----------------------------|---------|--------------------------|--------------------|--------------------------------|---------|---------|--|
| UNLESS OTHERWISE SPECIFIED | | MACHINED SURFACE TEXTURE | | ALL DIMENSIONS GIVEN IN INCHES | | | |
| FRACTIONS ± | ANGULAR | ± 1.5° | | WORK TO DIMENSIONS | | | |
| 1. PLACE DEC. ± .1 | | | -- DO NOT SCALE -- | | | | |
| 2. PLACE DEC. ± .031 | | | | | | | |
| 3. PLACE DEC. ± .005 | | | | | | | |
| DRAWN BY | DATE | CHKD BY | DATE | APP'D BY | DATE | SCALE | |
| (E.D.F.) | 4-29-94 | <i>EF</i> | 10-3-94 | <i>EF</i> | 10-3-94 | 1" = 6" | |
| MATERIAL: ----- | | | | | | | |
| FINISH: ----- | | TITLE | | COMPLETE UNIT ASSEMBLY | | | |
| ASS'Y: ----- | | | | | | | |
| MODEL: HD15000KE/A | | | | | | | |
| | | | | PART NO. B-63200-001 | | | |

THIS DRAWING CONTAINS PROPRIETARY INFORMATION BELONGING TO WINGCO. UNAUTHORIZED USE IS PROHIBITED.

B-63304-001

| REVISION RECORD | | | | | |
|-----------------|------------|--------------------------|----------|------|-------|
| ISSUE | E.C.O. NO. | DESCRIPTION | DATE | BY | APPR. |
| 5 | 62-98 | ADDED 13 | 2-13-98 | DW | SV |
| 6 | NO C/N | (4) DESC. WAS PIPE | 3-18-98 | J.W. | DW |
| 7 | 16-99 | (5) WAS -000 | 1-13-99 | D.W. | SV |
| 8 | 355-00 | (5) WAS -017 | 12-13-00 | BN | SV |
| 9 | | ITEM (9) WAS -B-9769-152 | 4-4-02 | E.F. | |

1 IF FUEL CAP SUPPLIED WITH TANK HAS A VENT SHUTOFF VALVE THE VALVE IS TO BE DISABLED BY REMOVING THE RUBBER "O" RING SO THE VENT CAN NOT BE CLOSED



- NOTES:
- FOR EASE OF ASSEMBLY THE FUEL TANK INSTALLATION SHOULD BE MADE AFTER THE ENGINE AND GENERATOR HAVE BEEN BOLTED SECURELY TO THE SHOCKMOUNTS.
 - ROUTE THE FUEL LINE SO AS TO AVOID SHARP BENDS THAT WOULD RESTRICT FUEL SUPPLY TO FUEL PUMP.
- 9 CONNECT BETWEEN FUEL TANK AND CRADLE USING A SCREW THAT IS USED TO SECURE FUEL TANK SUPPORT PANEL. (ON OPPOSITE END.)

| ITEM | PART NO | QUAN. | DESCRIPTION |
|------|-------------|-------|-----------------------------------------|
| 13 | 643-000 | 1 | 3/8 PIPE PLUG |
| 12 | 21975-000 | 1 | #10 INTERNAL TOOTH LOCK WASHER |
| 11 | 4637-000 | 1 | #10-24 X 3/8 BD. HD. SCREW |
| 10 | 456-000 | 1 | #10-24 HEX NUT |
| 9 | B-9769-109 | 1 | LEAD WIRE ASSEMBLY |
| 8 | A-99346-000 | 4 | ADHESIVE BACKED FOAM PAD |
| 7 | A-21698-001 | 8 | #10 X 3/8 SELF TAPPING SCREW |
| 6 | B-62999-001 | 1 | HOSE CLAMP |
| 5 | A-40078-019 | 1 | 1/4" I.D. HOSE |
| 4 | A-91747-000 | 1 | 1/4"-18 NPT-1/4" I.D. HOSE FUEL FITTING |
| 3 | A-55440-000 | 4 | 1/4-20 X 1/2" SELF TAPPING SCREW |
| 2 | B-63086-001 | 1 | FUEL TANK SUPPORT PANEL |
| 1 | B-63207-002 | 1 | 12 GALLON FUEL TANK |

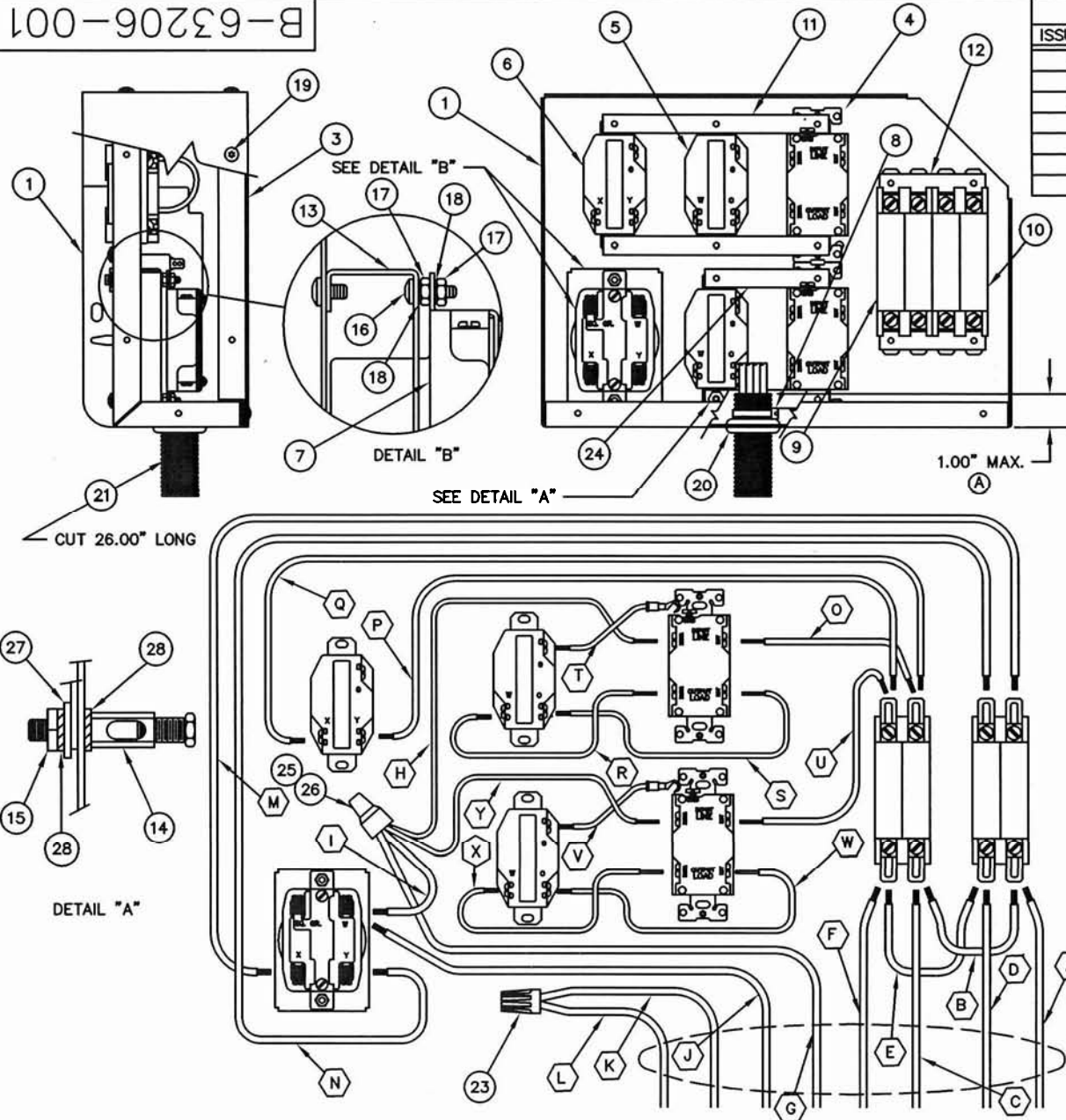
| | | | | | | | | | |
|----------------------------|--|--------------------------|--------------------------------|------------------|----------------------------------|------|----------|------|-------|
| UNLESS OTHERWISE SPECIFIED | | MACHINED SURFACE TEXTURE | ALL DIMENSIONS GIVEN IN INCHES | | | | | | |
| FRACTIONS ± | | | WORK TO DIMENSIONS | - DO NOT SCALE - | | | | | |
| 1. PLACE DEC. ± .1 | | | | ANGULAR ± 1.5° | | | | | |
| 2. PLACE DEC. ± .031 | | | | | | | | | |
| 3. PLACE DEC. ± .005 | | DRAWN BY | | DATE | CH'KD BY | DATE | APP'D BY | DATE | SCALE |
| | | E.I.D.F. | | 5-11-94 | | | | | 1"=6" |
| | | MATERIAL: | | ----- | | | | | |
| | | FINISH | ----- | | TITLE | | | | |
| | | ASS'Y | B-63200-001 | | FUEL SYSTEM PARTS & INSTALLATION | | | | |
| | | MODEL | HD15000KE/A | | PART NO. | | | | |
| | | | | | B-63304-001 | | | | |

THIS DRAWING CONTAINS PROPRIETARY INFORMATION BELONGING TO WINCO, UNAUTHORIZED USE IS PROHIBITED.

B-63206-001

REVISION RECORD

| ISSUE | E.C.O. NO. | DESCRIPTION | DATE | BY | APPR. |
|-------|------------|--------------------------------------------------------------------------|----------|----|-------|
| 7 | --- | CHANGED PICTORIALY | 8-24-98 | DW | SM |
| 8 | 413-98 | DELETED 21850-11 PICTORIALY | 10-14-98 | DW | SM |
| 9 | | (14) WAS 64211, (15) 6402-1, (18) QTY. 5, (24) QTY. 2, ADDED (27) & (28) | 12-16-99 | TB | |



| | | | |
|----|-------------|----------|------------------------------------------|
| 28 | 21975-000 | 2 | #10 INT. TOOTH LOCKWASHER |
| 27 | 64045-020 | 1 | MOUNTING STRAP |
| 26 | A-51320-000 | 1 | CONNECTOR CAP |
| 25 | A-51319-000 | 1 | CONNECTOR SLEEVE |
| 24 | B-64045-002 | 1 | MOUNTING STRAP |
| 23 | A-96936-008 | 1 | SPLICE CONNECTOR |
| 22 | B-63184-055 | 1 | LEAD WIRE GROUP AND INSTALLATION DETAILS |
| 21 | A-62487-002 | 2.17 FT. | LEAD WIRE LOOM |
| 20 | A-62486-000 | 1 | GROMMET |
| 19 | A-21698-001 | 25 | #10 X 3/8 SELF TAPPING SCREW - BLACK |
| 18 | 21976-000 | 4 | #8 EXT TOOTH LOCKWASHER |
| 17 | 5113-000 | 4 | #8-32 HEXNUT |
| 16 | 24198-001 | 2 | #8-32 X 5/8 BD. HD. SCREW |
| 15 | 456-000 | 1 | #10-24 HEX NUT |
| 14 | A-64833-000 | 1 | GROUND LUG |
| 13 | B-15267-000 | 1 | RECEPTACLE MOUNTING |
| 12 | B-64045-009 | 2 | MOUNTING STRAP |
| 11 | B-64045-006 | 2 | MOUNTING STRAP |
| 10 | B-57030-000 | 1 | 50 AMP TWO POLE CIRCUIT BREAKER |
| 9 | B-57030-001 | 1 | 20 AMP TWO POLE CIRCUIT BREAKER |
| 8 | A-49975-011 | 1 | CABLE TIE |
| 7 | B-91889-000 | 1 | 50 AMP, 120/240 V. TWISTLOCK RECEPTACLE |
| 6 | B-56281-000 | 1 | 20 AMP 240 VOLT TWISTLOCK RECEPTACLE |
| 5 | B-56279-000 | 2 | 20 AMP, 120 VOLT TWISTLOCK RECEPTACLE |
| 4 | B-15147-002 | 2 | 20 AMP, 120 VOLT GFCI DUPLEX RECEPTACLE |
| 3 | B-63040-002 | 1 | RECEPTACLE BOX COVER PANEL |
| 2 | B-63040-001 | 1 | RECEPTACLE BOX REAR PANEL |
| 1 | B-63035-002 | 1 | RECEPTACLE BOX FRONT PANEL |

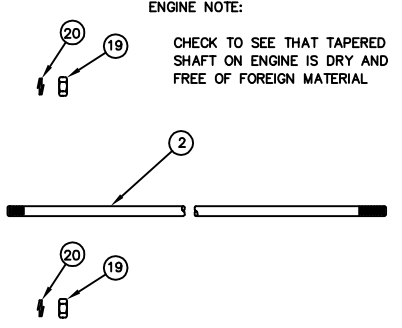
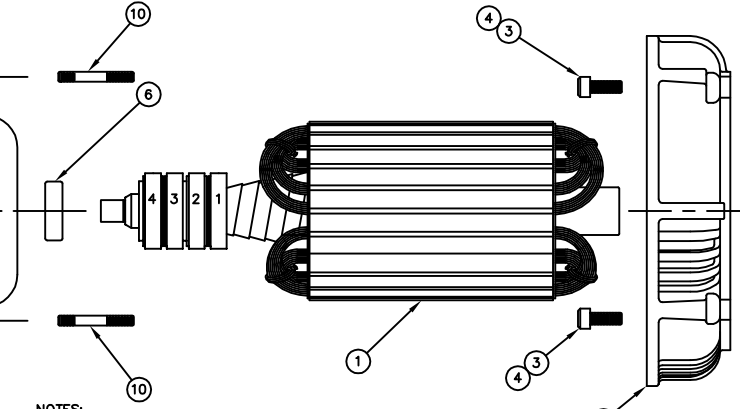
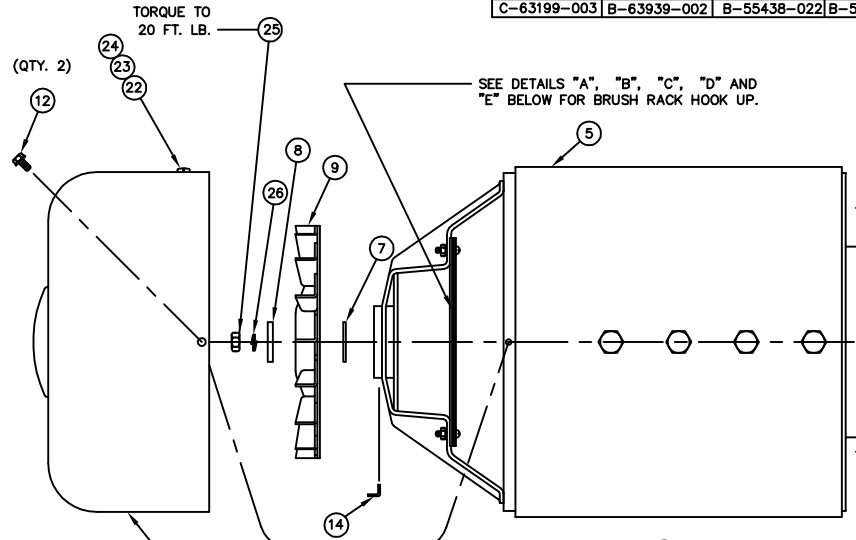
| ITEM | PART NO | QUAN. | DESCRIPTION |
|----------------------------|---------|---------|--------------------------------------------------------------------------|
| UNLESS OTHERWISE SPECIFIED | | | |
| FRACTIONS ± | | ANGULAR | MACHINED SURFACE TEXTURE |
| 1. PLACE DEC. ± .1 | | ± 1.5° | ALL DIMENSIONS GIVEN IN INCHES WORK TO DIMENSIONS - DO NOT SCALE - |
| 2. PLACE DEC. ± .031 | | | |
| 3. PLACE DEC. ± .005 | | | |

| | | | | | | | |
|---------------------------------------------------------------------------------------------------|-----------------|-------------------------|----------|---------|----------|-------------|-------|
| THIS DRAWING CONTAINS PROPRIETARY INFORMATION BELONGING TO WINCO, UNAUTHORIZED USE IS PROHIBITED. | DRAWN BY | DATE | CHKD BY | DATE | APP'D BY | DATE | SCALE |
| | E. D. F. | 5-6-94 | E. FLATT | 10-3-94 | E. FLATT | 10-3-94 | 1"=3" |
| | MATERIAL: ----- | | | | | | |
| | FINISH | ----- | TITLE | | | | |
| ASSY | B-63308-003 | RECEPTACLE BOX ASSEMBLY | | | | | |
| MODEL | HD15000KE/A | PART NO. | | | | | |
| WINCO INCORPORATED | | | | | | B-63206-001 | |

C-63199-002 & -003

| TABLE | | | | | |
|-------------|-------------|-------------|-------------|---------------|---------------|
| PART NO. | ITEM (5) | ITEM (1) | ITEM (2) | FINISH | NEXT ASSEMBLY |
| C-63199-002 | B-63939-001 | B-55438-021 | B-55493-001 | FS-4 (YELLOW) | B-63309-002 |
| C-63199-003 | B-63939-002 | B-55438-022 | B-55493-002 | FS-8 (RED) | B-63309-003 |

| REVISION RECORD | | | | | |
|-----------------|------------|------------------------------------|----------|------|-------|
| ISSUE | E.C.O. NO. | DESCRIPTION | DATE | BY | APPR. |
| 1 | --- | ORIGINAL | ----- | --- | --- |
| 2 | NONE | ADDED C-63199-003 | 7-11-94 | E.F. | E.F. |
| 3 | NONE | ITEM (3) WAS A-95745-005, QTY OF | | | |
| | | ITEM (17) WAS 6 | 9-21-94 | E.F. | E.F. |
| 4 | NONE | REVISED HARDWARE FOR ASSEMBLY | 9-27-94 | E.F. | E.F. |
| 5 | | ADDED CAPACITOR GROUND TERMINATION | 11-23-94 | E.F. | |

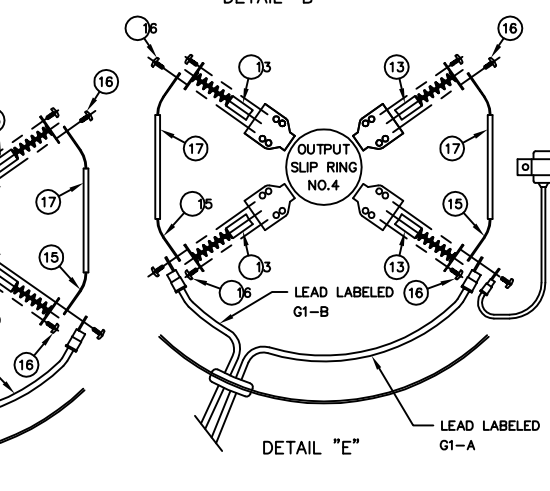
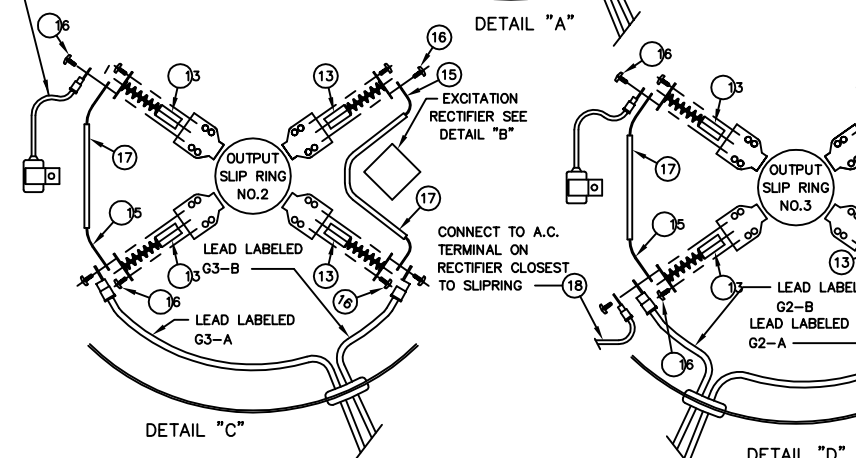
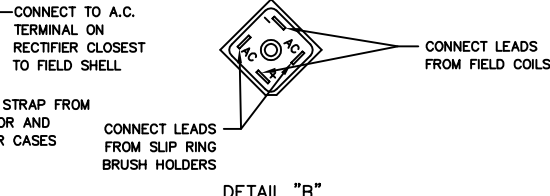
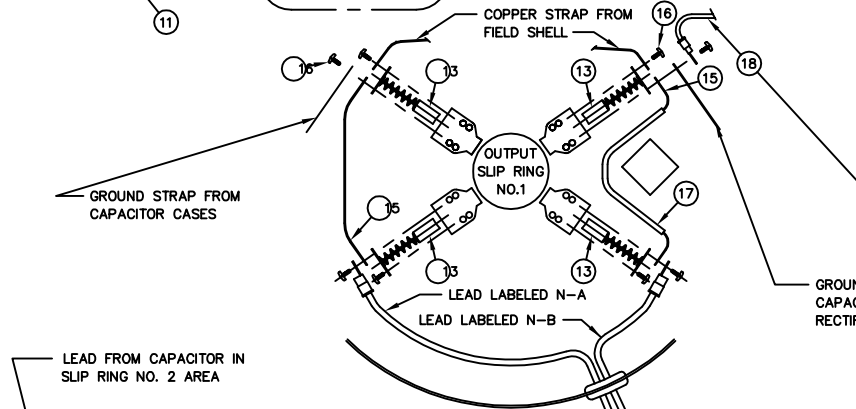


ENGINE NOTE:
CHECK TO SEE THAT TAPERED SHAFT ON ENGINE IS DRY AND FREE OF FOREIGN MATERIAL

- NOTES:
- ALL BRUSH HOLDER DETAILS ARE DRAWN LOOKING TOWARD MOUNTING PLATE, ON WHICH THEY ARE FASTENED.
 - LEAD WIRES SHOWN EXITING FROM END COVER ARE SUPPLIED WITH RECEPTACLE BOX ASSEMBLY
 - LEADS G3 FROM SLIP RING #2 HAS THE WILD LEG VOLTAGE.

REF. D-63791 SERIES

| ITEM | PART NO | QUAN. | DESCRIPTION |
|------|-------------|-------|-----------------------------------------|
| 26 | 480-001 | 1 | 5/16 SPLIT TYPE HARDENED LOCKWASHER |
| 25 | A-15193-000 | 1 | 5/16-18 HARDENED HEXNUT |
| 24 | 21976-000 | 1 | #8 EXT. TOOTH LOCKWASHER |
| 23 | 5113-000 | 1 | #8-32 HEXNUT |
| 22 | 6402-000 | 1 | #8-32 X 3/8 BD. HD. SCREW |
| 21 | SEE TABLE | 1 | ENGINE MOUNTING BRACKET |
| 20 | 480-000 | 4 | 5/16 SPLIT TYPE LOCKWASHER |
| 19 | 458-000 | 4 | 5/16-18 HEXNUT |
| 18 | B-23296-112 | 2 | LEAD WIRE ASSEMBLY |
| 17 | A-46024-003 | 7 | INSULATION TUBE |
| 16 | 40746-000 | 32 | #8-32 X 5/16 BIND. HD. SCREW |
| 15 | A-41387-008 | 8 | COPPER STRAP |
| 14 | A-59063-000 | 1 | BEARING ANTI-ROTATION PIN |
| 13 | A-24981-000 | 16 | BRUSH ASSEMBLY (A.C. OUTPUT) |
| 12 | A-53644-000 | 2 | #10-24 X 3/8 SELF TAPPING SCREW |
| 11 | SEE TABLE | 1 | END COVER ASSEMBLY |
| 10 | A-51434-000 | 4 | 5/16-18 x 2.88" THREADED STUD |
| 9 | B-23404-000 | 1 | FAN ASSEMBLY |
| 8 | A-23558-000 | 1 | FLAT WASHER (.125" THICK) |
| 7 | A-97627-001 | 1 | FLAT WASHER (.048" THICK) |
| 6 | A-59062-000 | 1 | BEARING |
| 5 | SEE TABLE | 1 | FIELD SHELL AND COILS ASSEMBLY |
| 4 | A-91257-000 | .5 ML | SEALANT |
| 3 | A-24707-000 | 4 | 7/16-14 X 1.00 HEX SOCKET HD. CAP SCREW |
| 2 | A-23197-032 | 1 | 5/16-18 X 14.75 SPECIAL STUD |
| 1 | B-63252-004 | 1 | ARMATURE AND WINDING ASSEMBLY |



| ITEM | PART NO | QUAN. | DESCRIPTION |
|---------------------------------------------------------------------------------------------------|---------|--------------------------------------|------------------|
| UNLESS OTHERWISE SPECIFIED | | | |
| FRACTIONS ± | ANGULAR | MACHINED SURFACE TEXTURE | |
| 1. PLACE DEC. ± .1 | ± 1.5° | ALL DIMENSIONS GIVEN IN INCHES | |
| 2. PLACE DEC. ± .031 | | WORK TO DIMENSIONS | |
| 3. PLACE DEC. ± .005 | | - DO NOT SCALE - | |
| THIS DRAWING CONTAINS PROPRIETARY INFORMATION BELONGING TO WINCO. UNAUTHORIZED USE IS PROHIBITED. | | DRAWN BY E D F | DATE 10-19-93 |
| | | CHKD BY E.D.F. | DATE 10-3-94 |
| | | APP'D BY E.D.F. | DATE 10-3-94 |
| | | SCALE 1"=3" | |
| FINISH ASS'Y MODEL | | TITLE GENERATOR PARTS UNASSEMBLED | |
| HD15000KE/A | | C-63199-002 & -003 | |

