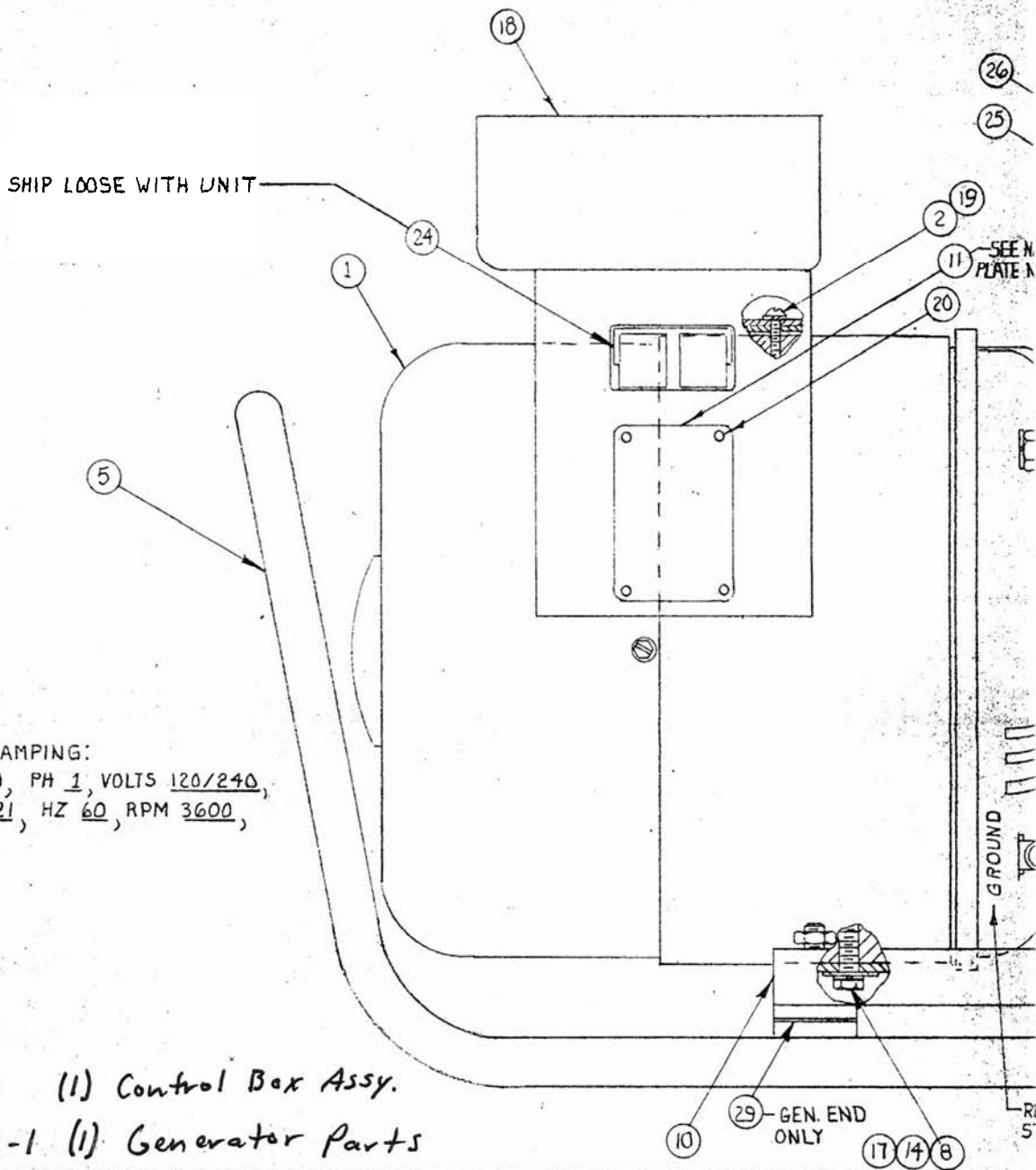


FF 5500 has the same generator end as model 405 BH-FE/F.

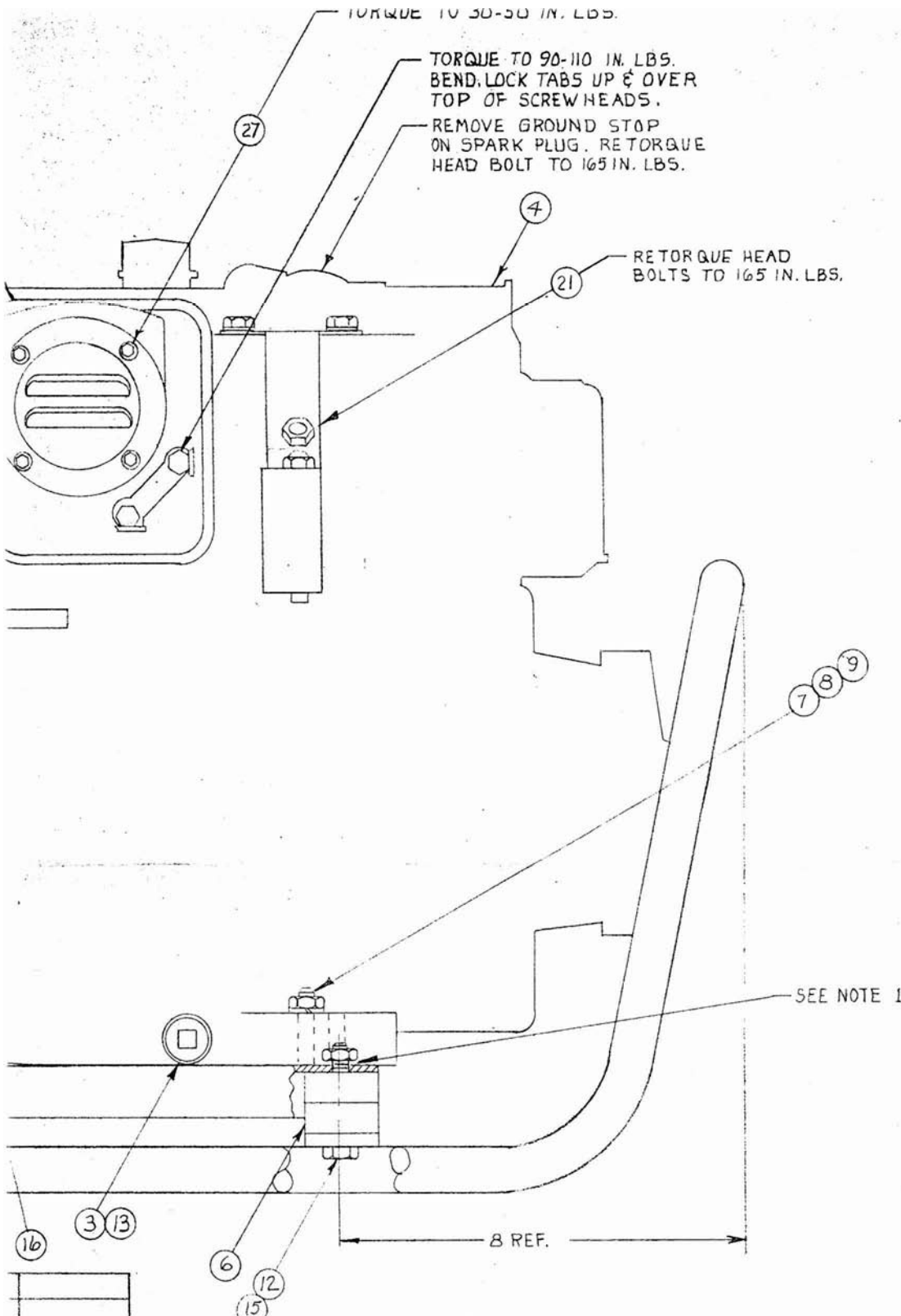


NAMEPLATE STAMPING:

WATTS 5000, PH 1, VOLTS 120/240,
 AMPS 42/21, HZ 60, RPM 3600,
 INS. F

18 B-63338 (1) Control Box Assy.
 1 C-56998-1 (1) Generator Parts

17	A-23558	1	FLATWASHER				
16	A-48043	1	GROUND LUG				
15	47136	4	LOCK NUT	5/16-18			
14	467	1	CAP SCREW	5/16-18 X 3/4	31	512	1 FLAT WASHER
13	A-53244-3	1	NIPPLE		30	476	1 H.H.C.S.
12	1720	4	CAP SCREW	5/16-18 X 2-1/2	29	A-23760	2 FLATWASHER
11	A-53031	1	NAMEPLATE		28	A-63355	1 MUFFLER ASSEMBLY
10	B-57963	1	SUB FRAME ASS'Y		27	A-58933	4 SCREW
9	9416	2	CAP SCREW	5/16-18 X 3/4	26	A-58932	1 SPARK ARRESTER
8	480	3	LOCKWASHER	5/16 SPLIT	25	A-58931-1	1 LOUVERED DEFLECTOR
7	458	2	HEX NUT	5/16-18	24	B-43659	1 CONNECTOR HALF
6	A-20191	8	RUBBER FOOT		23	21976	2 LOCKWASHER
5	C-57906	1	CARRYING CRADLE		22	6402	2 SCREW
4	57965	1	GASOLINE ENGINE		21	B-61097	1 CONSERVER ASS'Y
3	A-21857	1	COUPLING		20	A-61058	4 POP RIVET
2	4196	2	SCREW		19	479	3 LOCKWASHER



RELEASED FOR PRODUCTION

MAR 10 1986

EARTH ENERGY SYSTEMS, INC.
(FORMERLY DYNA TECHNOLOGY, INC.)

NOTES:

1. WITH WEIGHT OF UNIT ON CRADLE TIGHTEN BOLTS THROUGH SHOCK MOUNT SO THERE IS APPROX. 1/64 TO 1/32 BETWEEN HEX NUT AND TOP OF CHANNEL.
2. USE WIRING DIAGRAM C-63337.
3. ITEMS (27) & (23) USE TO MOUNT CONSERVER MODULE. REF. C-5912C

ALL DIMENSIONS GIVEN IN INCHES - WORK TO DIMENSIONS - DO NOT SCALE - SAMPLES MUST BE APPROVED BY DYNA TECHNOLOGY ENGINEERING DEPT. BEFORE PROCEEDING WITH PRODUCTION - TOLERANCES (UNLESS OTHERWISE SPECIFIED): FRACTIONS ± 1/64 DECIMALS .005 PUNCHED HOLES + .004 - .000 ANGLES ± 1°

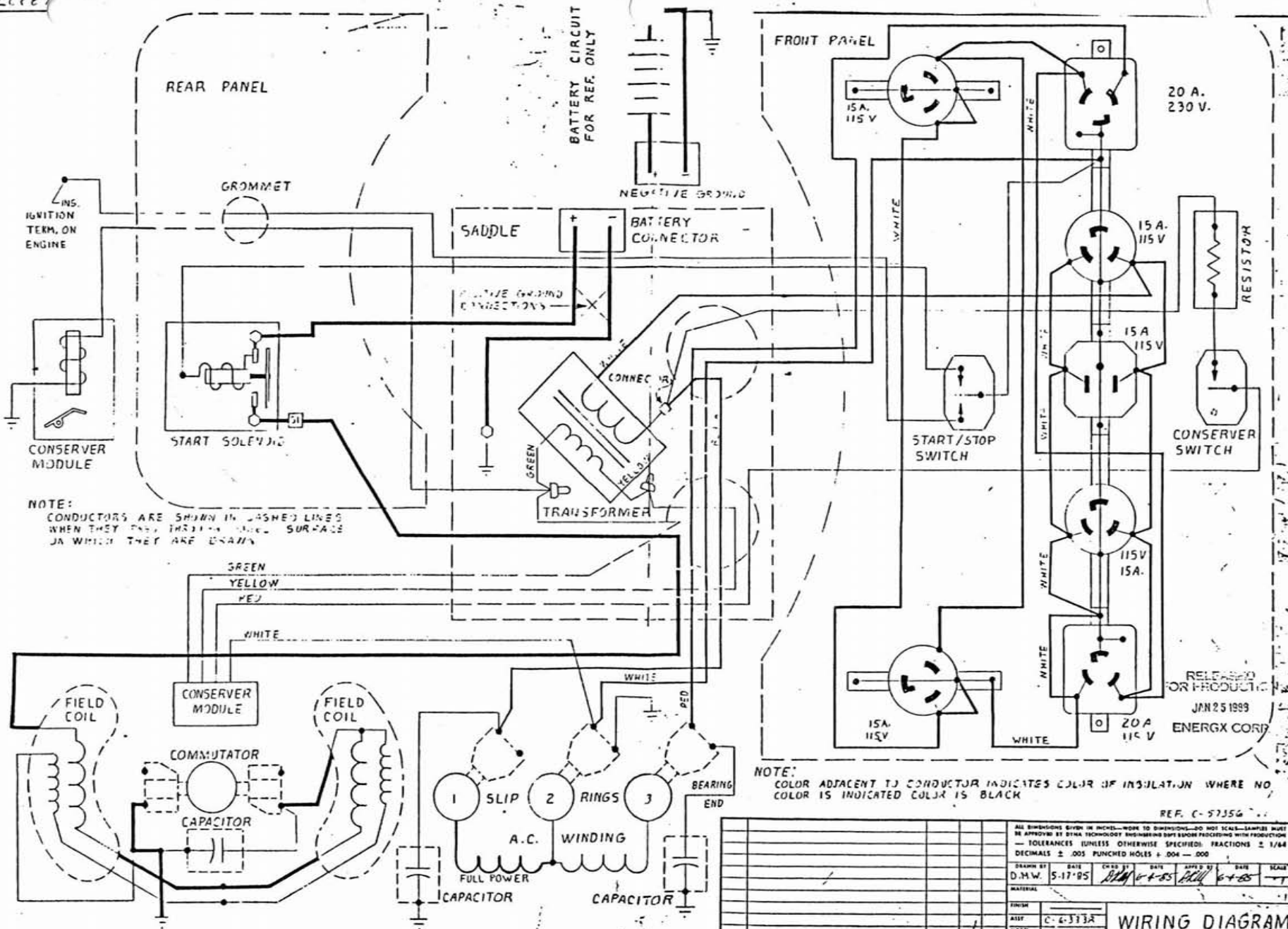
DRAWN BY	DATE	CHKD BY	DATE	APPRD BY	DATE	SCALE
D.M.W.	5-16-85	<i>[Signature]</i>	6-4-85	<i>[Signature]</i>	6-4-85	HALF

MATERIAL	FINISH	ASST	MODEL
	FS-8		FF 5500

COMPLETE UNIT ASSY

1/4 SPLIT	2	(9) QTY WAS 2, ADDED (30) (31)	3-7-86	J.L.
-----------	---	--------------------------------	--------	------

18889



NOTE:
CONDUCTORS ARE SHOWN IN DASHED LINES
WHEN THEY PASS THROUGH METAL SURFACE
ON WHICH THEY ARE DRAWN

NOTE:
COLOR ADJACENT TO CONDUCTOR INDICATES COLOR OF INSULATION WHERE NO
COLOR IS INDICATED COLOR IS BLACK

RELEASED
FOR PRODUCTION
JAN 25 1989
ENERGX CORP

REF. C-57354

ALL DIMENSIONS GIVEN IN INCHES—WORK TO DIMENSIONS—DO NOT SCALE—SAMPLES MUST BE APPROVED BY DYNA TECHNOLOGY ENGINEERING DEPT BEFORE PROCEEDING WITH PRODUCTION									
— TOLERANCES (UNLESS OTHERWISE SPECIFIED): FRACTIONS ± 1/64									
DECIMALS ± .005 PUNCHED HOLES ± .004 — .000									
DRAWN BY	DATE	CHKD BY	DATE	APPR'D BY	DATE	SCALE			
D.M.W.	5-17-85	DMW	6-4-85	DMW	6-4-85				
MATERIAL									
FINISH									
ASST	C-6333A		WIRING DIAGRAM						
NOEN	FF5500								
ISSUE	REVISION	DATE	BY	AUTH	WINDO Division of DYNA TECHNOLOGY, INC. Bounton City, Iowa 51108				
1	ORIGINAL				C-63337				

FF5500