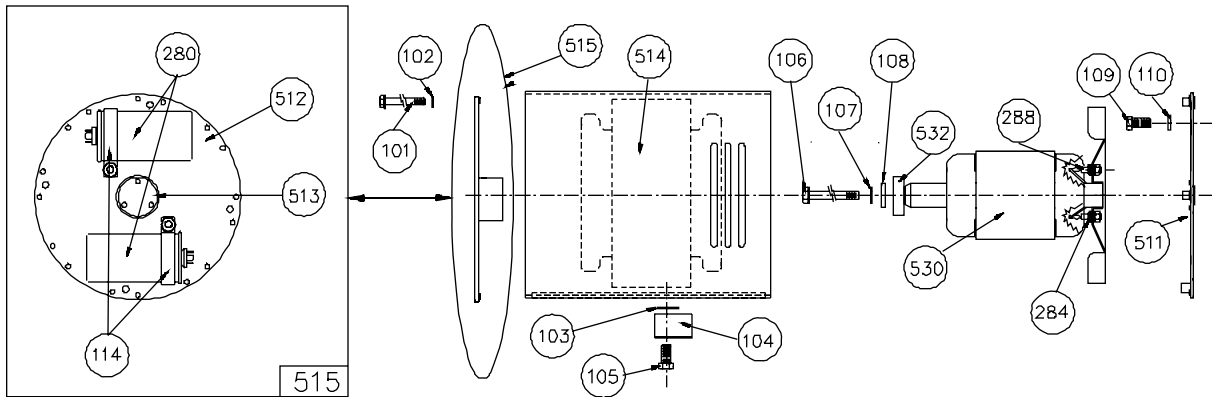
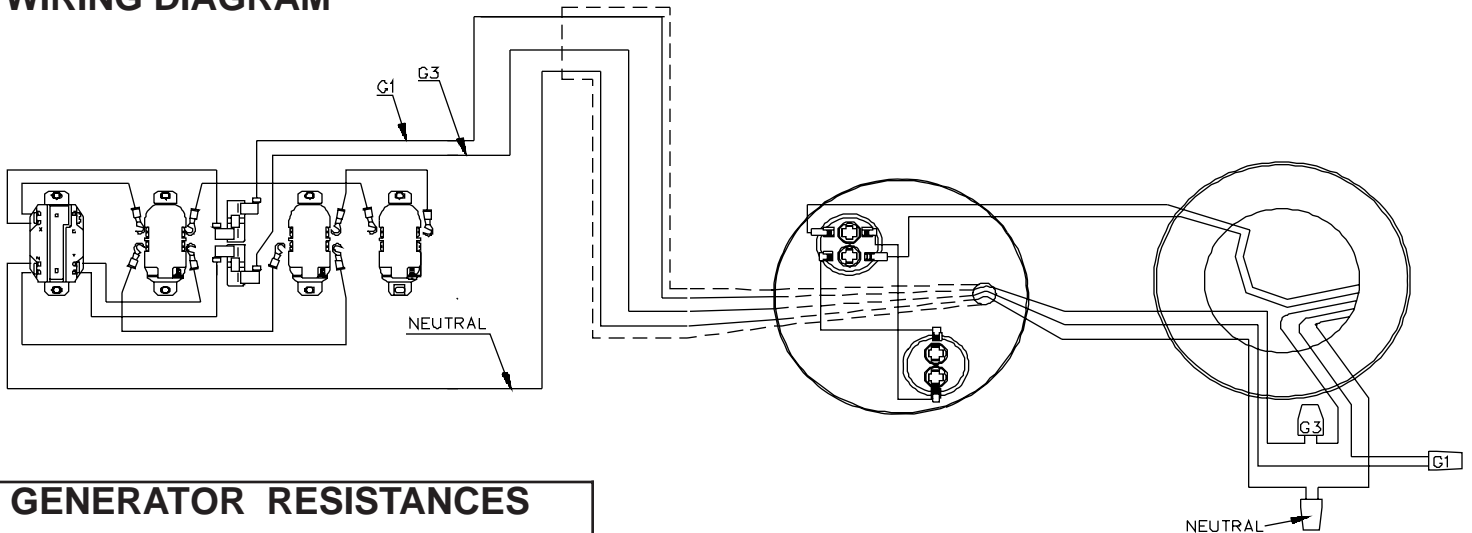


GENERATOR ASSEMBLY



REF	DESCRIPTION	QTY	PARTNBR	REF	DESCRIPTION	QTY	PARTNBR
101	Cap Screw 1/4-20	4	15530-004	280	Capacitor	2	15051-000
102	Lockwasher 1/4	4	479-000	284	Diode (STD)	1	15047-001
103	Flat Washer 5/16	1	526-000	288	Diode (REV)	1	15047-002
104	Support Bracket	1	15545-000	511	Engine Mounting Brkt	1	15505-000
105	Stud	1	62173-000	512	Bearing Bracket	1	15391-004
106	Thrubolt	1	15529-002	513	Tolerance Ring	1	15122-000
107	Lockwasher 5/16	1	480-000	514	Stator Assembly	1	15359-415
108	Flat Washer	1	23558-000	515	End Bracket Assembly	1	15476-000
109	Cap Screw 3/8-16 x 3/4	4	464-000	530	Rotor Assembly	1	15359-424
110	Lockwasher 3/8	4	481-000	532	Bearing	1	55223-000
114	Capacitor Strap	2	15374-002				

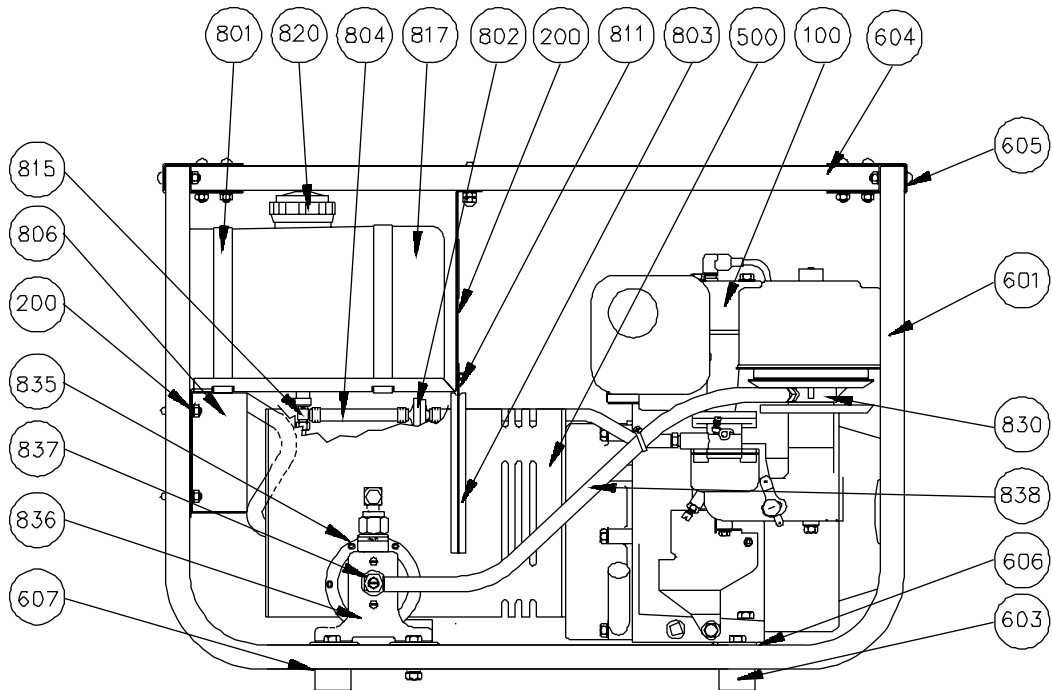
WIRING DIAGRAM



GENERATOR RESISTANCES

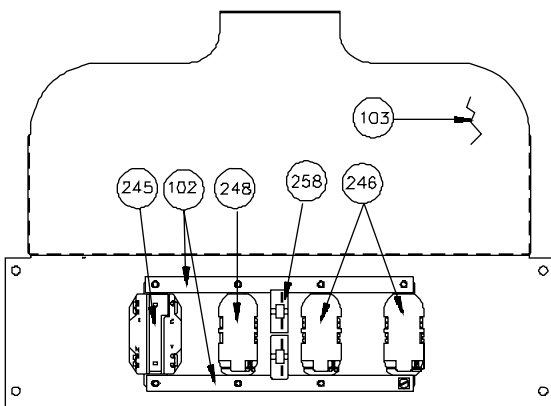
Rotor	.079-1.05
Stator	
G1-N	0.21-0.23
G3-N	0.22-0.25
Cap Leads	0.53-0.58
Winding Data	SS1543

COMPLETE UNIT ASSEMBLY



REF	DESCRIPTION	QTY	PARTNBR	REF	DESCRIPTION	QTY	PARTNBR
100	Engine Briggs & Stratton (modified) Type	Ref	254427	803	Gasket (feet)	1.06	15287-000
200	Control Panel Assembly	Ref	15909-000	804	Fuel Line (feet)	0.4	40078-000
500	Generator Assembly	Ref	15359-005	806	Panel Rear Cover	1	15463-001
601	Cradle Half	2	15876-000	811	Air Baffle	1	15520-000
603	Rubber Foot	4	15873-000	815	Fuel Shut Off Valve	1	98771-000
604	Cradle Top Member	1	15881-000	817	Fuel Tank	1	64024-000
605	Cradle Clamp	2	15802-000	820	Fuel Cap	1	15482-000
606	Cradle Cross Member	3	15506-000	830	Vapor Fuel Mixer	1	64130-000
607	Flat Washer	4	23760-000	835	Demand Regulator	1	55501-003
801	Tank Strap	2	15483-400	836	Regulator Mtg Brkt	1	15704-000
802	Fuel Filter	1	62496-000	837	Load Block Assemble	1	63586-000
				838	Vapor Fuel Hose (feet)	1.6	55505-000

CONTROL PANEL



REF	DESCRIPTION	QTY	PARTNBR
102	Ground Strap	2	64045-001
103	Front Panel & Tank Support	1	15910-000
245	Receptacle 120/240 (L14-30R)	1	97360-000
246	Receptacle 120 (5-20R)	2	50766-000
248	Receptacle 240 (6-20R)	1	15504-000
258	Circuit Breaker 25 Amp	2	91286-006



225 S. Cordova Ave.
LeCenter, Mn 56057

Phone - (612) 357-6831
FAX - (612) 357-4857