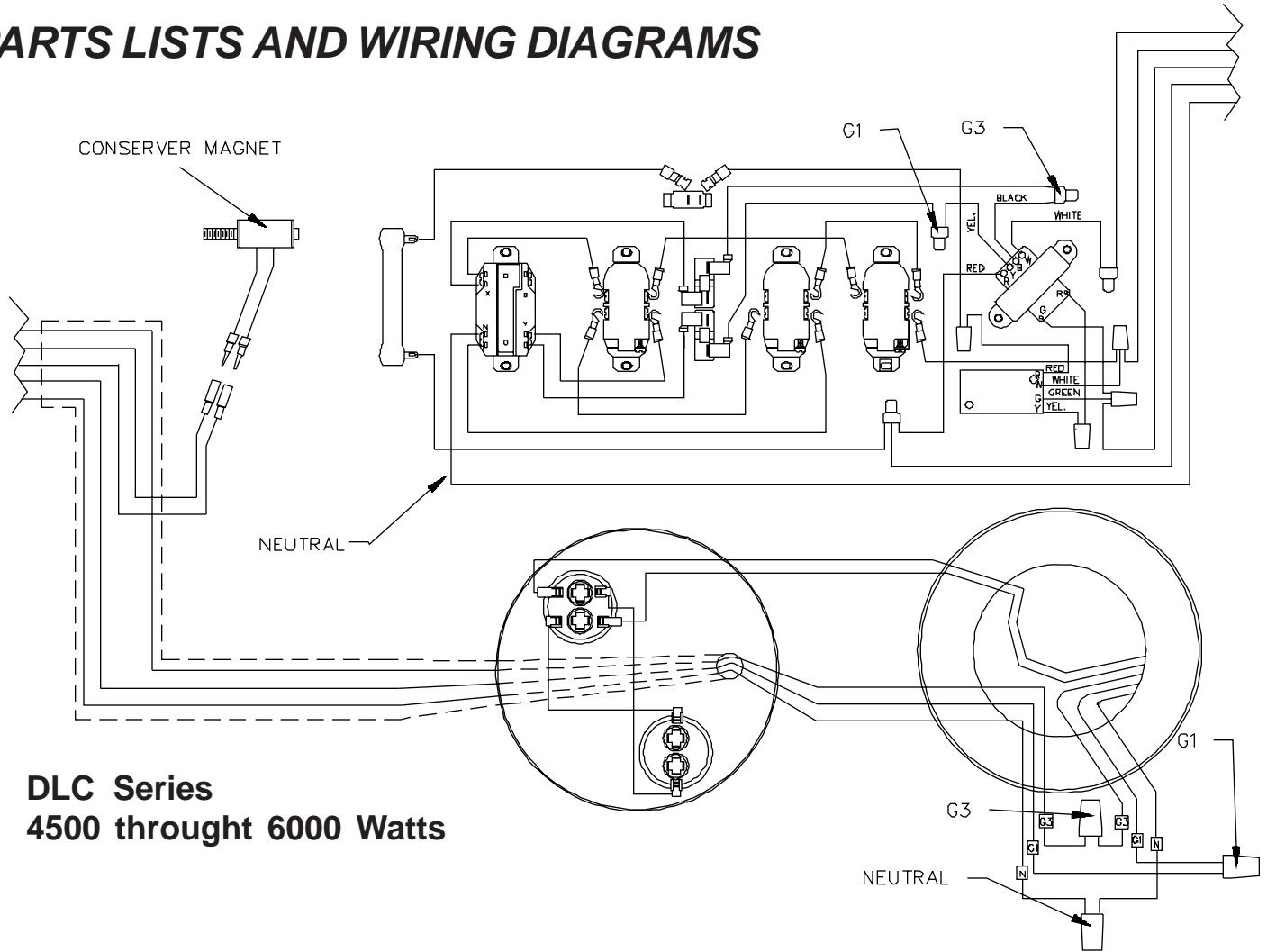


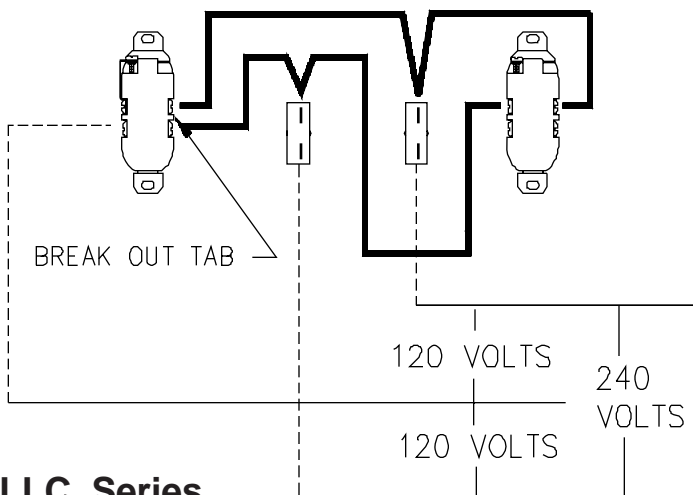
# DYNA

## DLC & LLC SERIES 4500 THROUGH 6000 WATTS

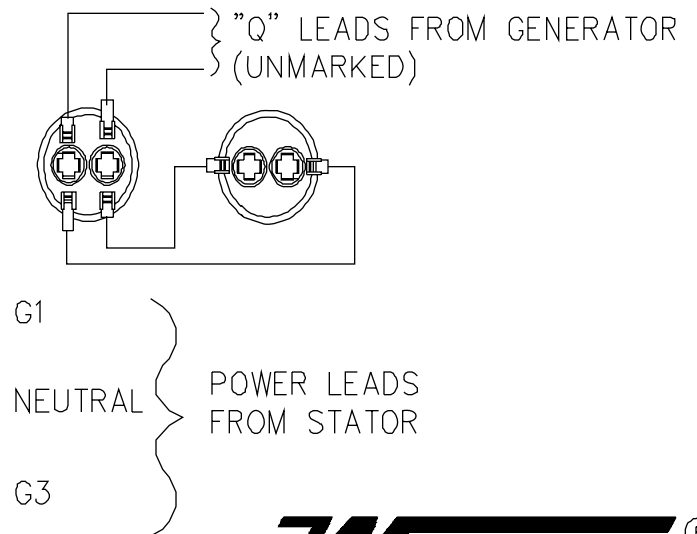
### PARTS LISTS AND WIRING DIAGRAMS



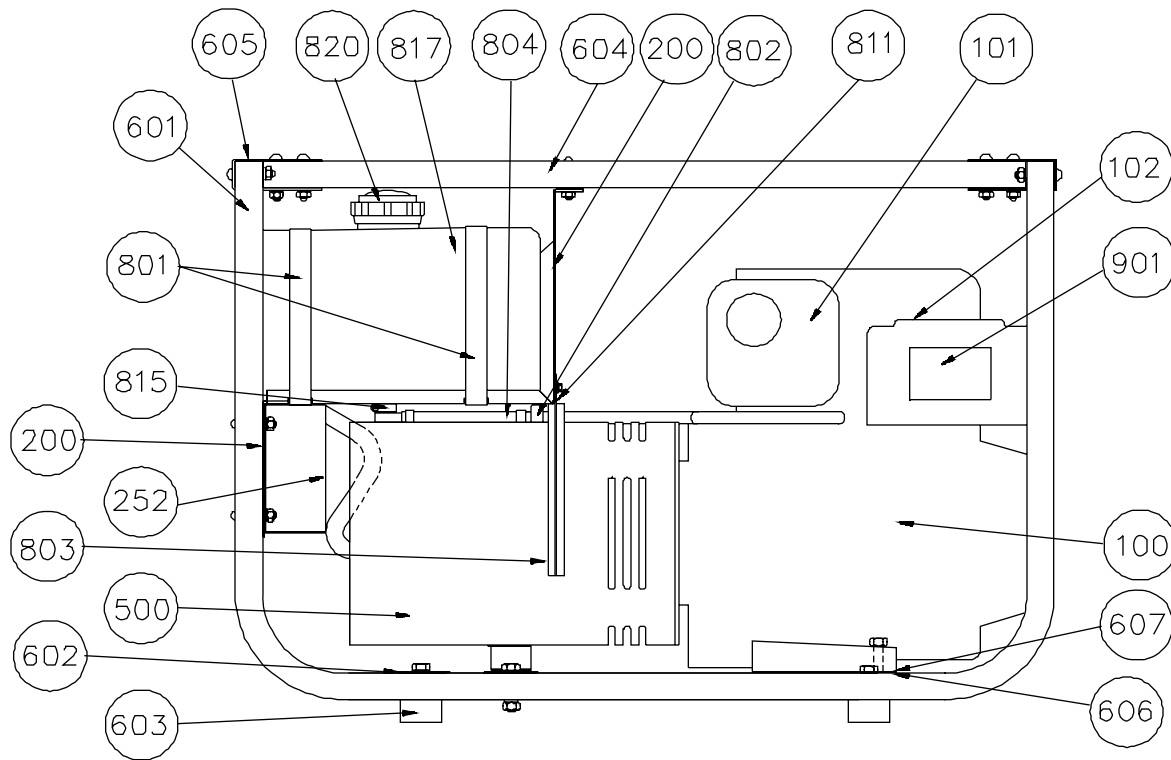
**DLC Series**  
4500 through 6000 Watts



**LLC Series**  
4500 through 6000 Watts

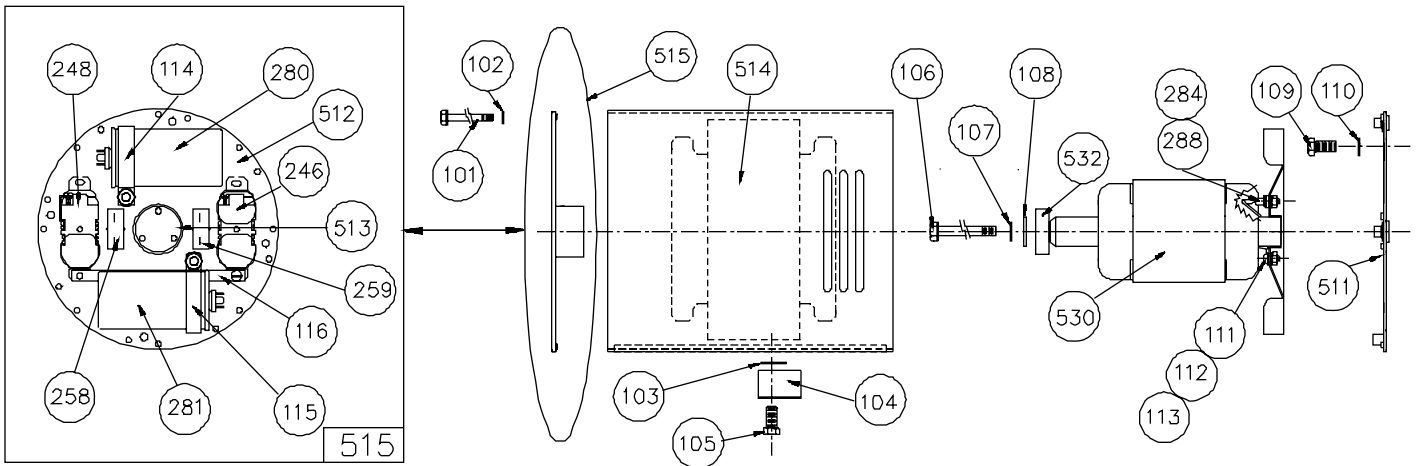


## COMPLETE UNIT ASSEMBLY



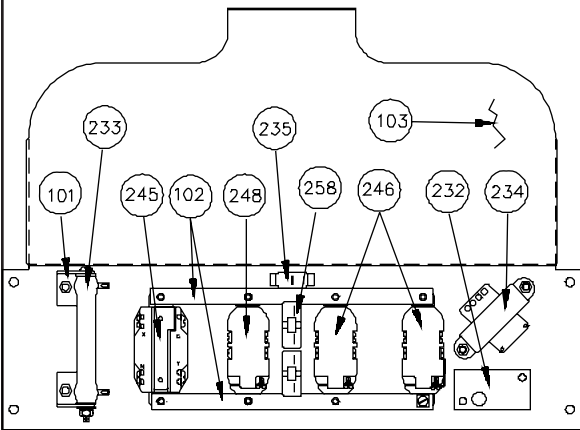
REF	DESCRIPTION	QTY	LLC4500(E)	DLC4500	LLC5000H	LLC6000	DLC6000E
100	Engine	1	190432 (6141-01) 190437 (E) (6006-01)	195432 (1007-01)	GX270VA	252412 (5149-01)	254427 (0560-01)
101	Muffler	1	15610-000	56923-700	Honda	Briggs	Briggs
102	Conserver Assembly	1	Not Used	15184-000	Not Used	Not Used	15183-001
200	Control/Support Panel	1	15462-001	15877-001	15462-001	15462-001	15584-001
252	Back Panel	1	Not Used	15463-001	Not Used	Not Used	15463-001
500	Generator Assembly	REF	15359-003	15359-001	15359-007	15359-004	15359-005
601	Cradle Half	2	15453-001	15453-001	15453-001	15876-000	15876-000
602	Cradle Cross Member	2	15305-000	15305-000	15556-000	15506-000	15506-000
603	Rubber Shockmounts	4	15873-000	15873-000	15873-000	15873-000	15873-000
604	Cradle Top Member	1	15823-002	15823-002	15823-002	15881-000	15881-000
605	Cradle Clamps	2	15802-000	15802-000	15802-000	15802-000	15802-000
606	Support Crossmember	1	15842-000	15842-000	Not Used	Not Used	Not Used
607	Engine Cross Member	1	15824-000	15824-000	15556-000	15506-000	15506-000
801	Tank Mounting Straps	2	15483-400	15483-400	15483-400	15483-400	15483-400
802	Fuel Filter	1	62496-000	62496-000	62496-000	62496-000	62496-000
803	Heat Shield Gasket	1	Not Used	Not Used	Not Used	Not Used	15287-000 (1.6 FT)
804	Fuel Line	1	40078-000 (1.15 FT)	40078-000 (1.15 FT)	40078-000 (1.6 FT)	40078-000 (.34 FT)	40078-000 (.34 FT)
811	Heat Shield	1	Not Used	Not Used	Not Used	Not Used	15520-000
815	Shutoff Valve	1	98771-000	98771-000	98771-000	98771-000	98771-000
817	Fuel Tank	1	64024-000	64024-000	64024-000	64024-000	64024-000
820	Fuel Cap	1	15482-000	15482-000	15482-000	15482-000	15482-000
901	Safety Decal Set	1	15209-000	15209-000	15209-000	15209-000	15209-000

## GENERATOR ONLY ASSEMBLY



REF	DESCRIPTION	QTY	LLC4500(E)	DLC4500	LLC5000H	LLC6000	DLC6000E
Generator Complete	REF		15359-003	15359-001	15359-007	15359-004	15359-005
101	Stud 1/4-20	4	15530-003	15530-003	15530-003	15530-004	15530-004
102	Lockwasher 1/4	4	479-000	479-000	479-000	479-000	479-000
103	Flatwasher 5/16	1	526-000	526-000	526-000	526-000	526-000
104	Support Bracket	1	15545-000	15545-000	15545-000	15545-000	15545-000
105	Stud 5/16-18 X 3/4	1	62173-000	62173-000	62173-000	62173-000	62173-000
106	Thrubolt 5/16-24	1	15529-001	15529-001	15529-001	15529-002	15529-002
107	Lockwasher 5/16	1	480-000	480-000	480-000	480-000	480-000
108	Flatwasher	1	23558-000	23558-000	23558-000	23558-000	23558-000
109	Stud 3/8-16 X 3/4	4	464-000	464-000	464-000	464-000	464-000
110	Lockwasher 3/8	4	481-000	481-000	481-000	481-000	481-000
111	Screw #10-32 X 3/8	1	599-000	599-000	599-000	Not Used	Not Used
112	Lockwasher #10	1	484-000	484-000	484-000	Not Used	Not Used
113	Hex Nut #10-32	1	6372-000	6372-000	6372-000	Not Used	Not Used
114	Capacitor Bracket	1	15374-002	15374-002	15374-002	15374-002	15374-002
115	Capacitor Bracket	1	Not Used	Not Used	Not Used	15374-002	15374-002
116	Ground Strap	1	64045-006	Not Used	64045-006	64045-006	Not Used
246	Receptacle 240 Volts	1	40452-000	Not Used	40452-000	15504-000	Not Used
248	Receptacle 120 Volts	1	24749-000	Not Used	24749-000	50766-000	Not Used
258	Circuit Breaker	1	91286-001	Not Used	91286-001	91286-006	Not Used
259	Circuit Breaker	1	91286-001	Not Used	91286-001	91286-006	Not Used
280	Capacitor	1	15051-000	15051-000	15051-000	15051-000	15051-000
281	Capacitor	1	Not Used	Not Used	Not Used	15051-000	15051-000
284	Diode (std)	1	15047-001	15047-001	15047-001	15047-001	15047-001
288	Diode (rev)	1	Not Used	Not Used	Not Used	15047-002	15047-002
511	Engine Mounting Brkt	1	15367-000	15367-000	15367-001	15505-000	15505-000
512	Bearing Brkt (bare)	1	15391-001	15391-004	15391-001	15391-001	15391-004
513	Tolerance Ring	1	15122-000	15122-000	15122-000	15122-000	15122-000
514	Stator & Shell Assy.	1	15359-413	15359-411	15359-413	15359-414	15359-415
515	Bearing Brkt Assy	1	15365-000	15474-000	15365-000	15475-000	15476-000
530	Rotor Assembly	1	15359-421	15359-421	15359-421	15359-424	15359-424
532	Bearing	1	55223-000	55223-000	55223-000	55223-000	55223-000

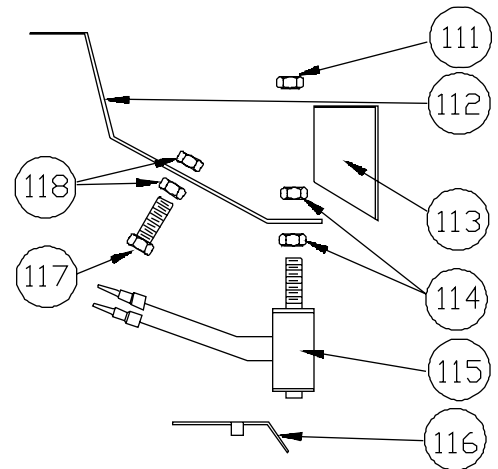
## RECEPTACLE PANEL ASSEMBLY



REF	DESCRIPTION	QTY	DLC4500	DLC6000E
	Control Panel		REF 15877-001	REF 15884-001
101	Resistor Mtg Brkt	2	53997-000	53997-000
102	Grounding Strap	2	64045-001	64045-001
103	Front Panel	1	15878-001	15878-001
232	Conserver Module	1	48574-000	48574-000
233	Resistor	1	48583-000	48583-000
234	Transformer	1	40450-000	40450-000
235	Conserver Switch	1	64089-000	64089-000
245	Receptacle L14-30R	1	97360-000	97360-000
246	Receptacle 120 Volt	2	24749-000	50766-000
248	Receptacle 240 Volt	1	40452-000	15504-000
258	Circuit Breaker	2	91286-000	91286-001

## CONSERVER ASSEMBLY

REF	DESCRIPTION	QTY	DLC4500	DLC6000E
	Conserver Assembly		REF 15184-000	REF 15183-001
111	Acorn Nut	1	44894-000	44894-000
112	Formed Mounting Brkt	1	44927-000	61096-000
113	Cover	1	44891-000	44891-000
114	Hex Jam Nut 5/16-24	2	44894-000	44894-000
115	Electro Magnet	1	15182-000	15182-000
116	Steel Extension	1	44892-000	44892-000
117	Cap Screw 5/16-18 X 2	1	91672-009	465-000
118	Hex Nut 5/16-18	2	458-000	458-000



## GENERATOR WINDING RESISTANCES

MODEL	SS NBR	ROTOR	STATOR G1 TON	G3 TON	CAP. LEADS	STATOR CONN.
LLC4500	SS 1541	0.79-0.87	0.61-0.67	0.61-0.67	2.10-2.33	AC 367
LLC4500E	SS 1541	0.79-0.87	0.61-0.67	0.61-0.67	2.10-2.33	AC 367
DLC4500	SS 1541	0.79-0.87	0.61-0.67	0.61-0.67	2.10-2.33	AC 367
LLC5000H	SS 1541	0.79-0.87	0.61-0.67	0.61-0.67	2.10-2.33	AC 367
LLC6000	SS 1543	0.95-1.05	0.21-0.23	0.22-0.25	0.53-0.58	AC 367
DLC6000E	SS 1543	0.95-1.05	0.21-0.23	0.22-0.25	0.53-0.58	AC 367

  
 INCORPORATED  
 225 S. Cordova Ave.  
 LeCenter, Mn 56057

Phone - (612) 357-6831  
 FAX - (612) 357-4857