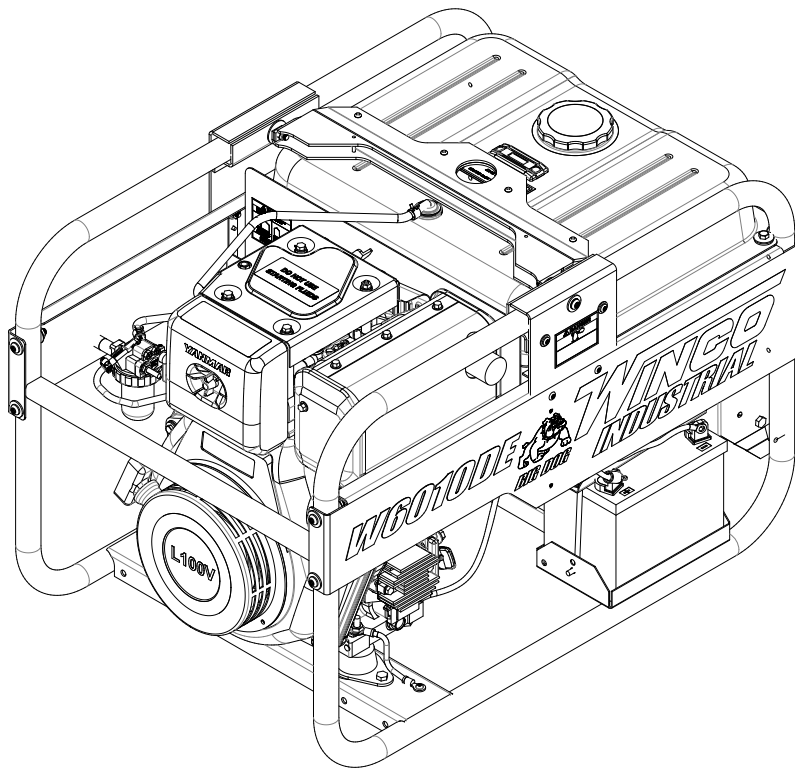


WINCO[®] INC

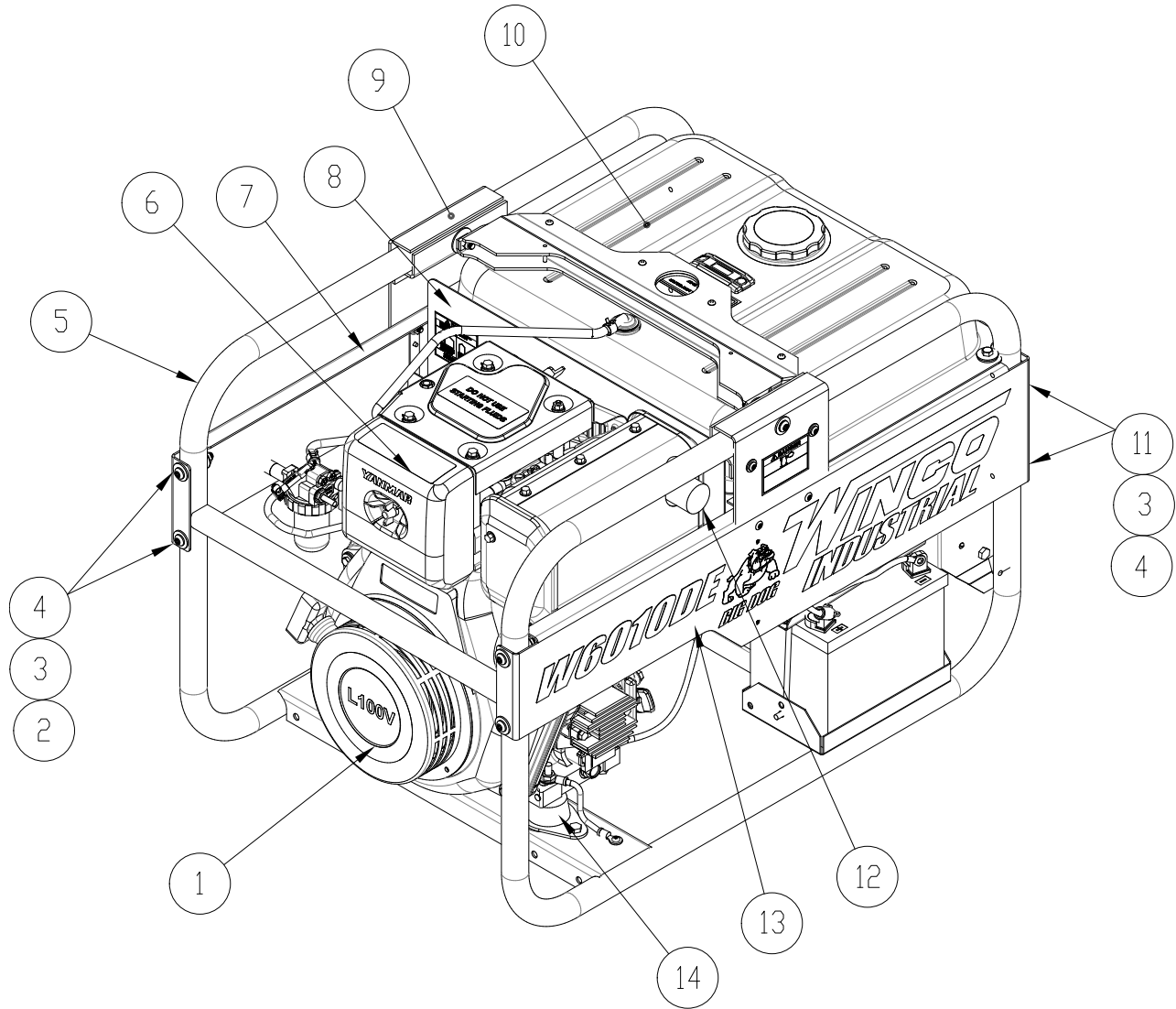
ILLUSTRATED PARTS LIST

W6010DE/G



**225 S. CORDOVA AVE.
LECENTER, MN 56057
507-357-6821
SERVICE DEPT.
507-357-6831
wincogen.com**

ENGINE & GENERATOR ASSEMBLY

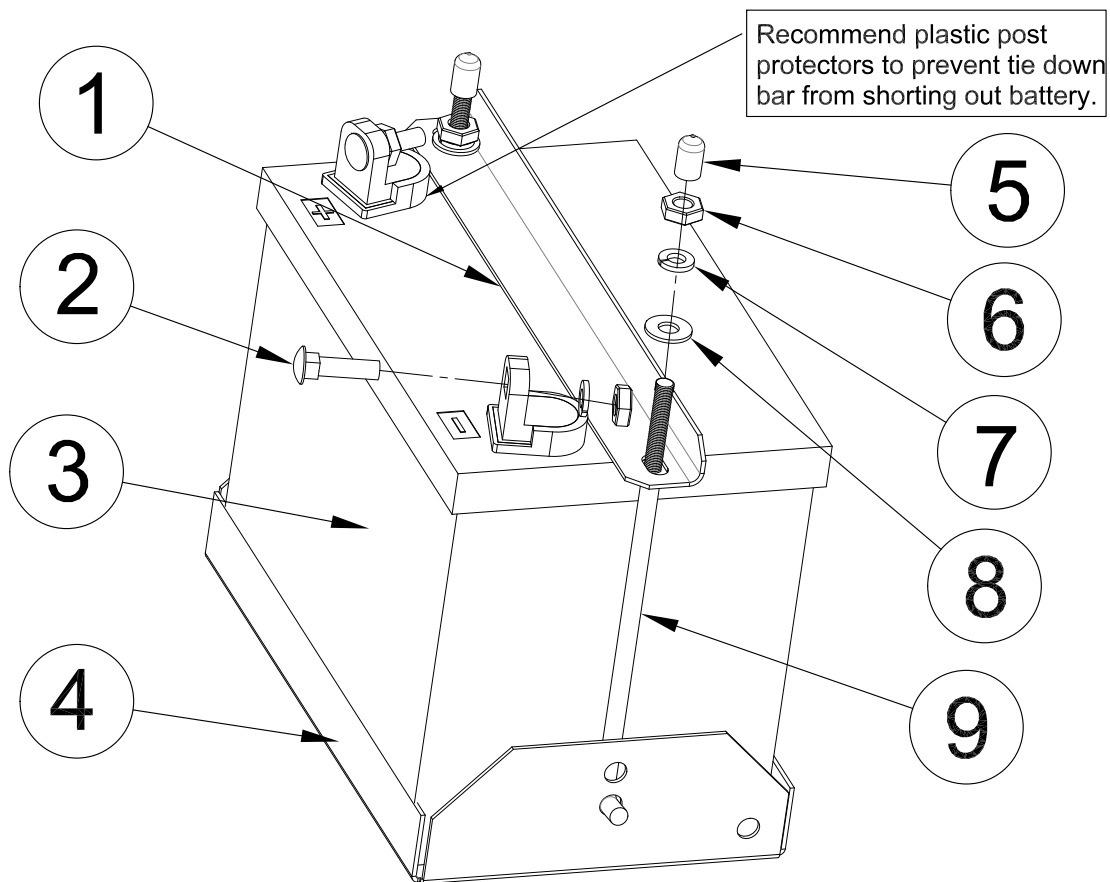


REF #	PART NUMBER	QTY	DESCRIPTION
1	15806-002	1	Engine, Yanmar Model: L100V6EJ1CHAS1
NI	15532-009	Reference	Generator Assembly
2	64858-005	4	5/16"-18 X 2" Bolt
3	526-000	8	Washer
4	16249-000	8	Flange Nut
5	63073-051	1	Cradle
6	114210-12590	1*	Air Filter w/Pre-Filter
7	300217-14SW6DEG	1	Right Side Rail
8	15464-019	1	Generator Divider
9	300144-9	Reference	Lifting Eye Assembly
10	15163-091	Reference	Fuel System Assembly
11	64858-004	4	5/16"-18 X 1 3/4" Bolt
12	114699-13800	1*	Exhaust Deflector
13	300216-14SW6DEG	1	Left Side Rail
14	98807-000	4	Shock Mount
NI	99036-000	1	Oil Pressure Switch
NI	114299-35110	1*	Oil Filter Element
NI	15807-002	1	Battery Hold Down Kit
NI	23917-000	2	Grommet on Gen Divider
*	Yanmar Part #		
NI	Not Illustrated		

For a complete engine parts list use the "Engine Support" tab on our website.

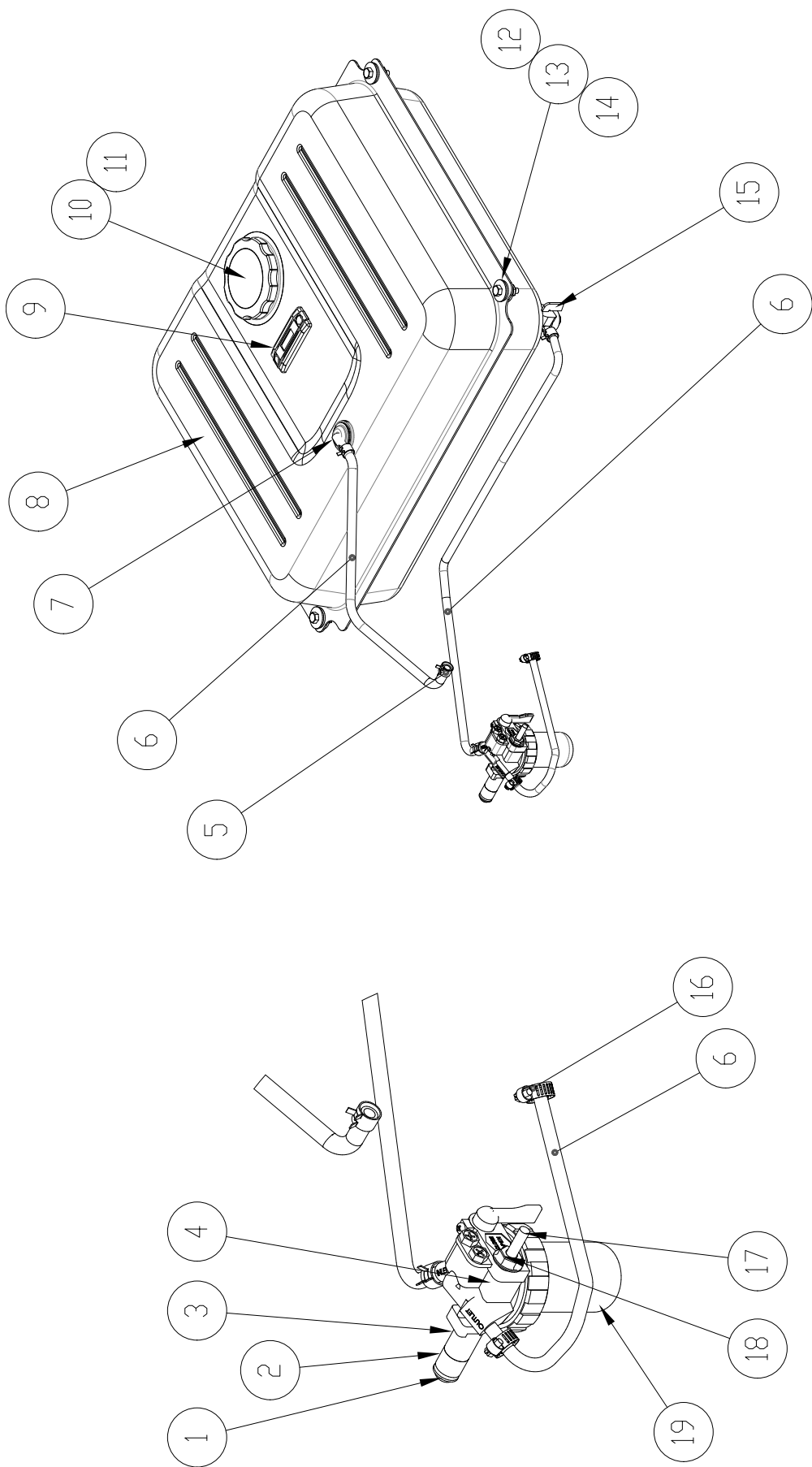
http://www.wincogen.com/Engine_Support

BATTERY INSTALLATION



REF #	PART NUMBER	QTY	DESCRIPTION
1	64167-004	1	Hold Down Bracket
2	56842-001	2	Carriage Bolt
3	Battery	1*	BCI Group Size U1 Rated at 300 CCA
4	15676-012	1*	Battery Tray
5	64278-000	2	Vinyl Protective Cap
6	638-000	4	1/4" Hex Nut
7	479-000	4	1/4" Lock Washer
8	512-000	2	1/4" Flat Washer
9	64240-002	2	Hold Down Rod
NI	15767-004	1	Battery Positive Cable
NI	15767-012	1	Battery Negative Cable
NI	Not Illustrated		
*	Not part of this kit		

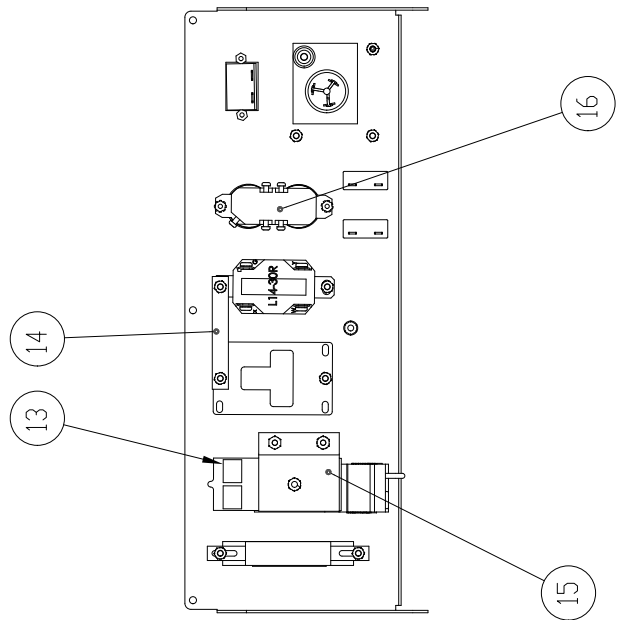
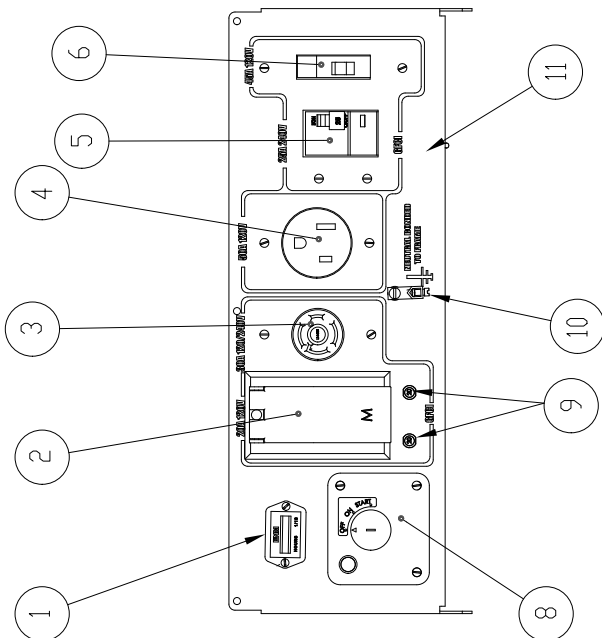
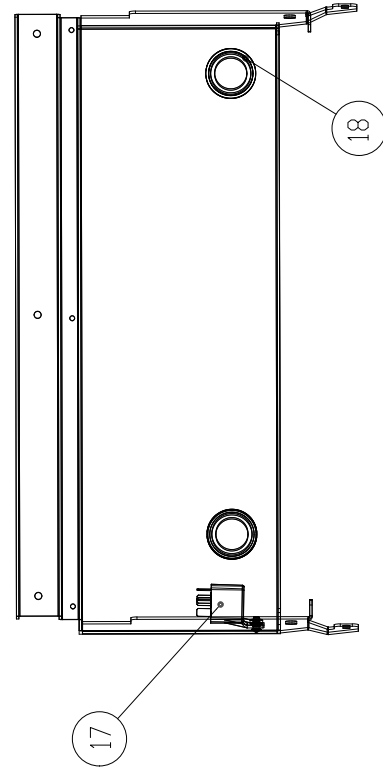
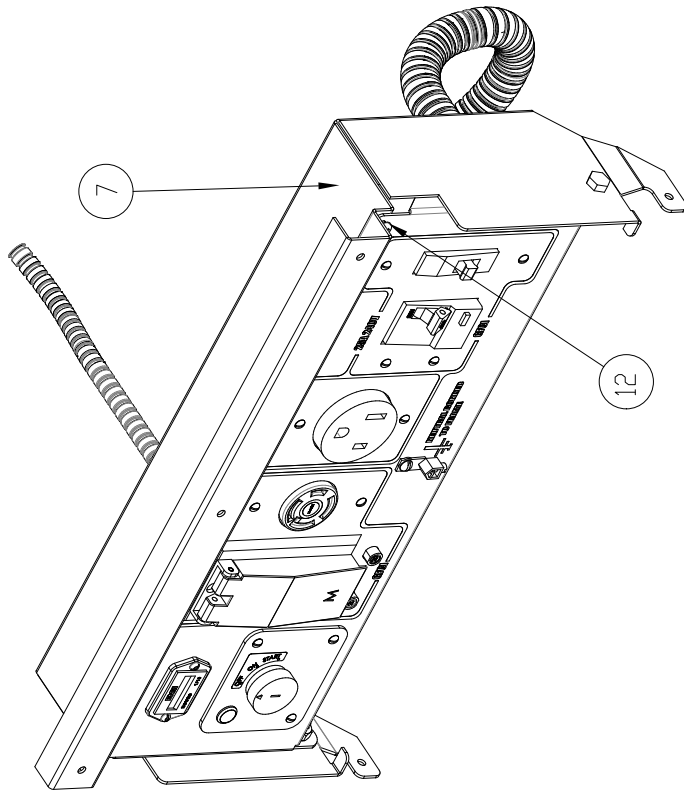
FUEL SYSTEM ASSEMBLY



FUEL SYSTEM ASSEMBLY

REF #	PART NUMBER	QTY	DESCRIPTION
1	512-000	1	Flat Washer
2	96834-000	1	Spacer
3	96834-002	1	Spacer
4	62496-006	1	Fuel Filter Assembly
5	62999-001	4	½" OD Hose Clamp
6	40078-000	varies	¼" ID Fuel Hose
7	80903-002	1	Slosh Valve w/Grommet
8	64024-013	1	7 Gallon Fuel Tank
9	64024-402	1	Fuel Gauge
10	64024-408	1	Vented Fuel Cap
11	64024-403	1	Fuel Filter in Tank
12	64024-406	4	Rubber Bushing
13	64024-405	4	Anti-Crash Insert
14	439-000	4	¼"-20 X 1" Bolt
15	64024-404	1	Shut-Off Valve
16	81018-009	2	Hose Clamp
17	92934-000	1	¼"-20 X 4.5" Bolt
18	16248-000	5	Flange Nut
19	114250-55510	1*	Fuel Filter Element
*	Yanmar Part #		

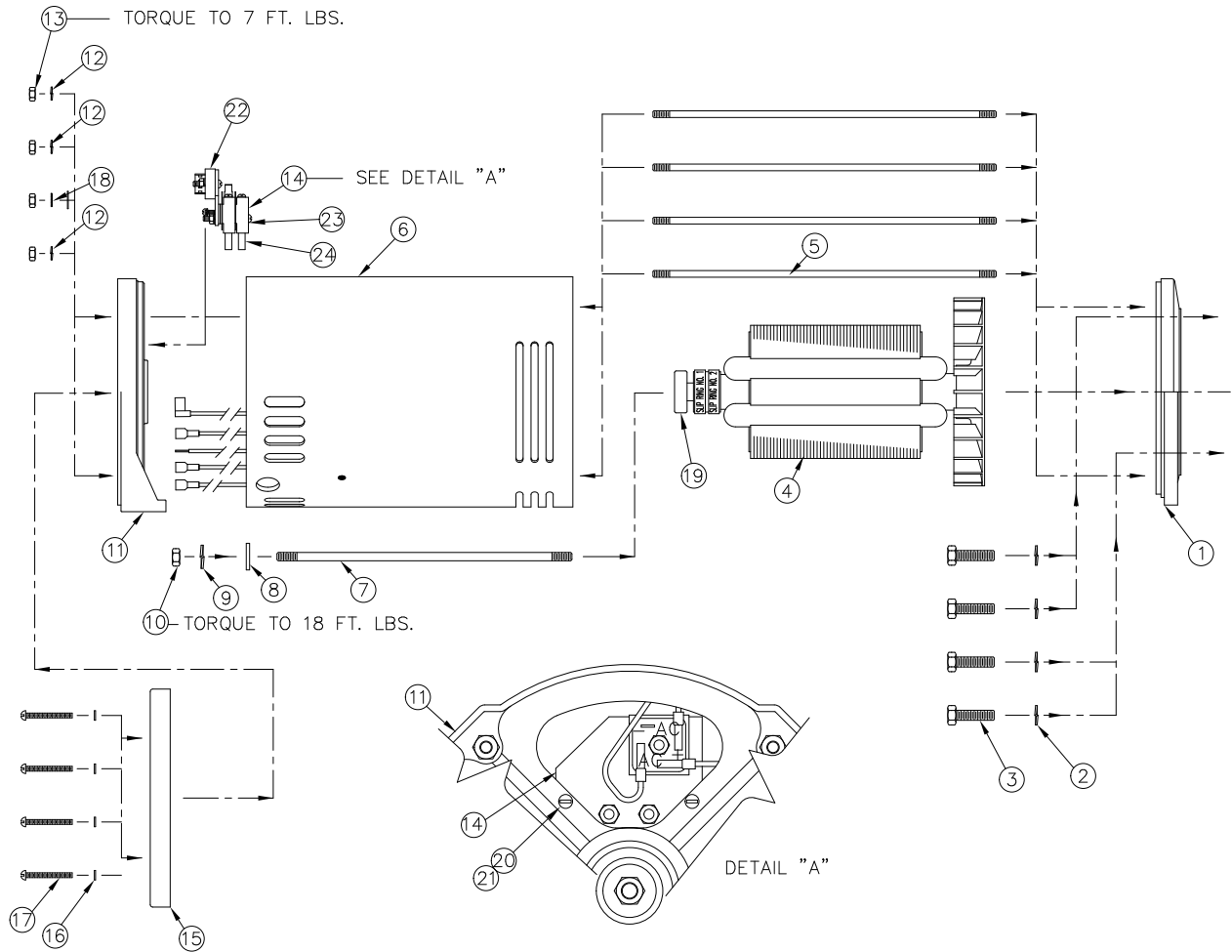
RECEPTACLE BOX ASSEMBLY



RECEPTACLE BOX ASSEMBLY

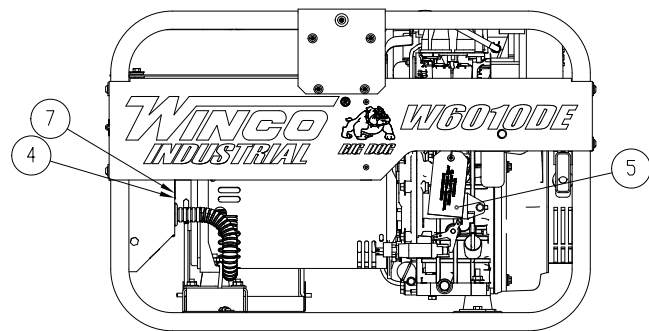
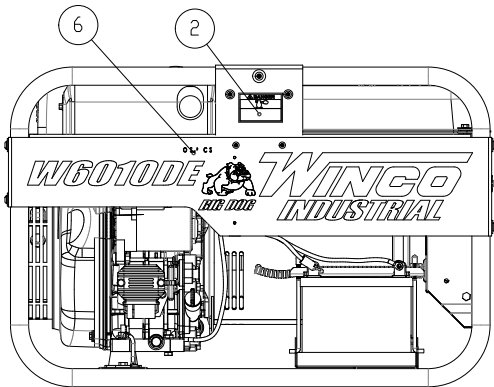
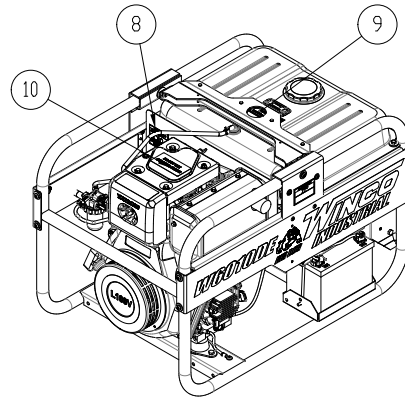
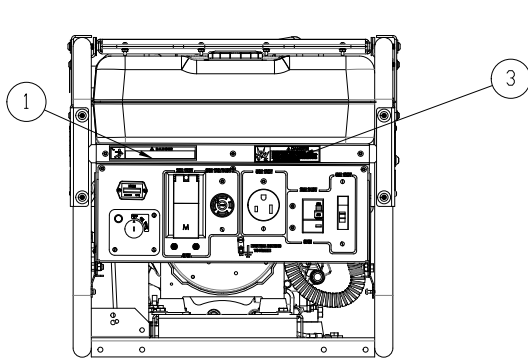
REF #	PART NUMBER	QTY	DESCRIPTION
1	58166-001	1	Running Time Meter
2	15620-008	1	1 Gang Receptacle Cover
3	97360-000	1	NEMA L14-30R Receptacle
4	54545-000	1	NEMA 5-50R Receptacle
5	16488-016	1	25 Amp 2-Pole GFCI Breaker
6	91977-006	1	45 Amp 1-Pole 240V Breaker
7	15221-031	1	Receptacle Back Panel
8	15806-020	1	Key Switch
8A	15806-102	1	Keys (set of two)
9	91286-001	2	20 Amp 1-Pole Breaker
10	48042-001	1	Ground Lug
11	15458-038	1	Receptacle Front Panel
12	21698-001	7	Torx Screw
13	16489-001	1	Breaker Terminal Block
14	64045-046	1	Mounting Strap
15	16319-000	1	Breaker Mounting Bracket
16	50766-000	1	NEMA 5-20R Receptacle
17	59944-016	1	SPDT 12VDC Relay
18	62486-000	2	Grommet

GENERATOR END ASSEMBLY



REF #	PART NUMBER	QTY	DESCRIPTION
1	15008-000	1	Engine Bracket
2	97436-008	4	Split Lock Washer
3	96002-040	4	M8-1.25 X 40mm Bolt
4	15522-002	1	Rotor Assembly
5	15068-009	4	1/4-20 Threaded Stud
6	15528-002	1	Stator Assembly
7	23197-026	4	5/16-24 Threaded Stud
8	23558-000	1	Flat Washer
9	480-001	1	5/16 Split Lock Washer
10	15193-000	1	5/16-24 Hex Nut
11	15533-002	1	Bearing Bracket
12	479-000	3	1/4 Split Lock Washer
13	15192-000	4	1/4-20 Hex Nut
14	15523-000	1	Brush Holder Assembly
15	15085-000	1	End Cover
16	21975-000	4	#10 Internal Tooth Lock Washer
17	15013-001	4	#10-32 X 1.75 Rnd Head Screw
18	4516-000	1	Star Lock Washer
19	50215-000	1	Bearing
20	24988-000	2	#6-32 X .5 Screw
21	566-000	2	#6 Split Lock Washer
22	53976-000	1	Bridge Rectifier
23	59690-000	2	Brush Holder
24	23607-000	2	AC Brush
NI	15017-001	1	Bearing Bracket Insert
NI	Not Illustrated		

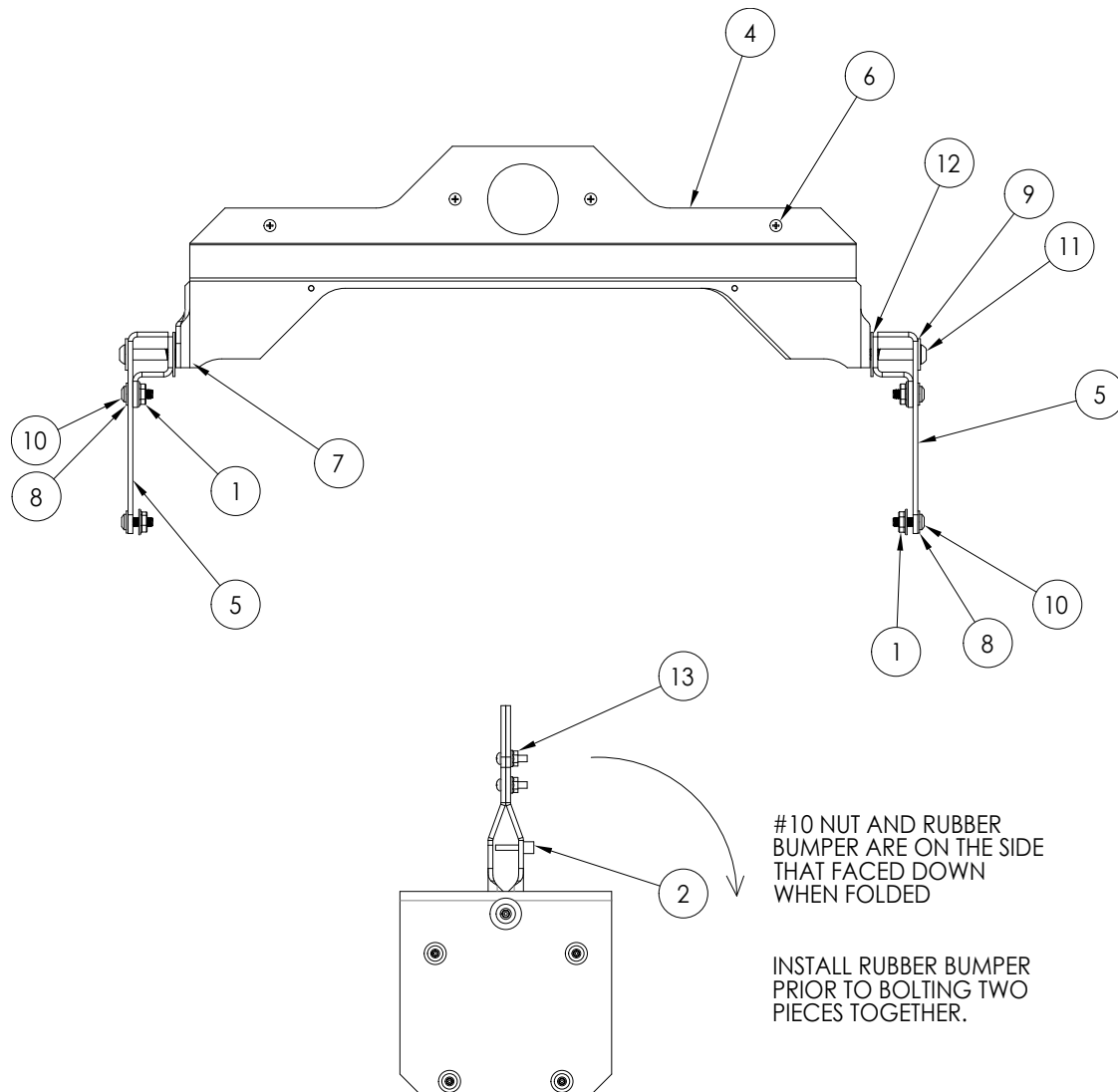
DECAL INSTALLATION



REF #	PART NUMBER	QTY	DESCRIPTION
1	15209-001	1*	Gasoline Decal
2	15209-002	1*	Carbon Monoxide Decal
3	15209-003	1*	Electrical Shock Decal
4	16506-005	1	Nameplate Overlay
5	60710-018	1	Oil Warning Tag
6	63941-001	1	Hot Surface Decal
7	63966-004	1	Winco Nameplate
8	64918-000	1	CO Use Outside Decal
9	97381-001	1	Diesel Fuel Only Decal
10	97382-000	1	Do Not Use Starting Fluid Decal

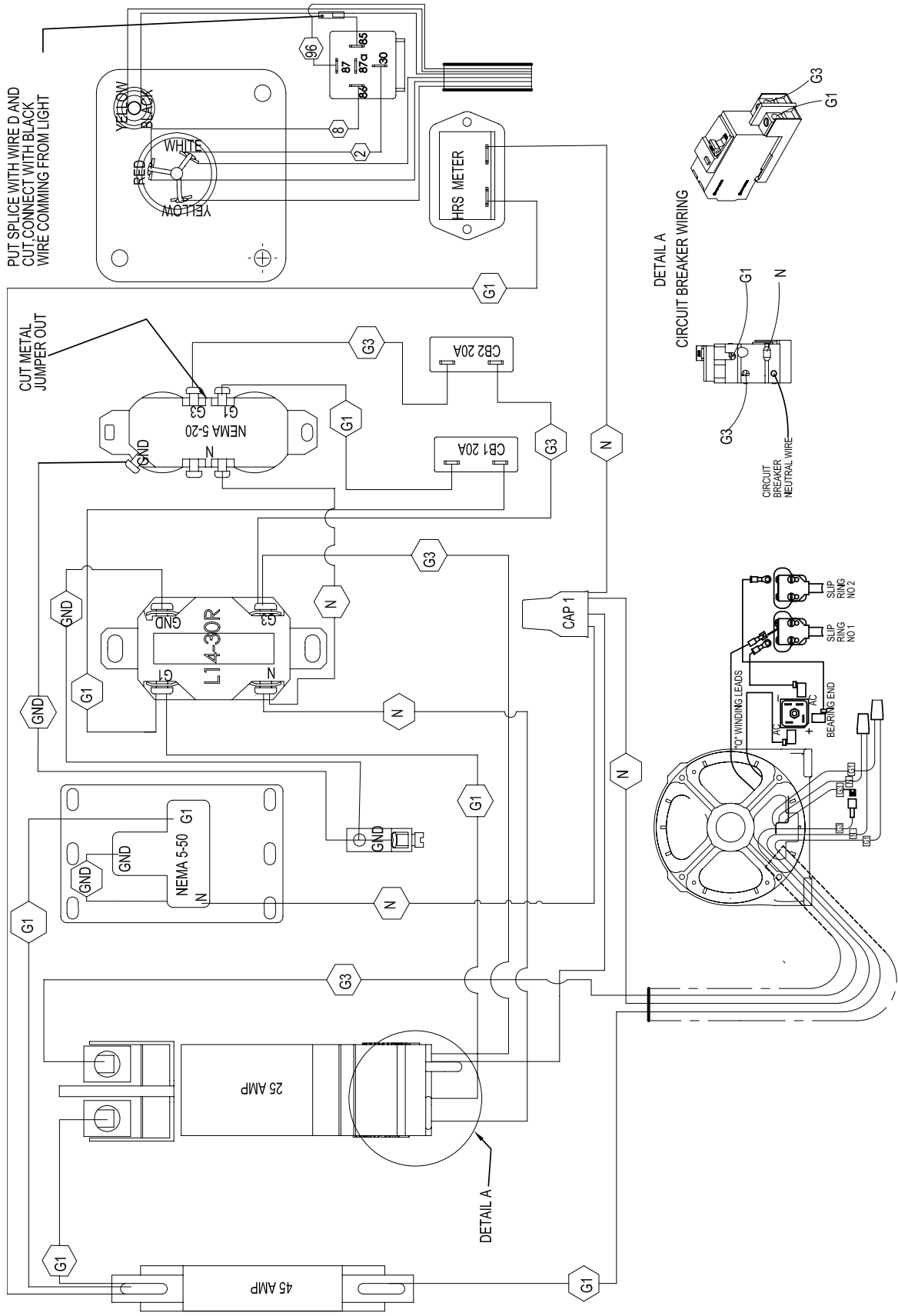
* Part of Decal Set 15209-000

LIFTING EYE ASSEMBLY

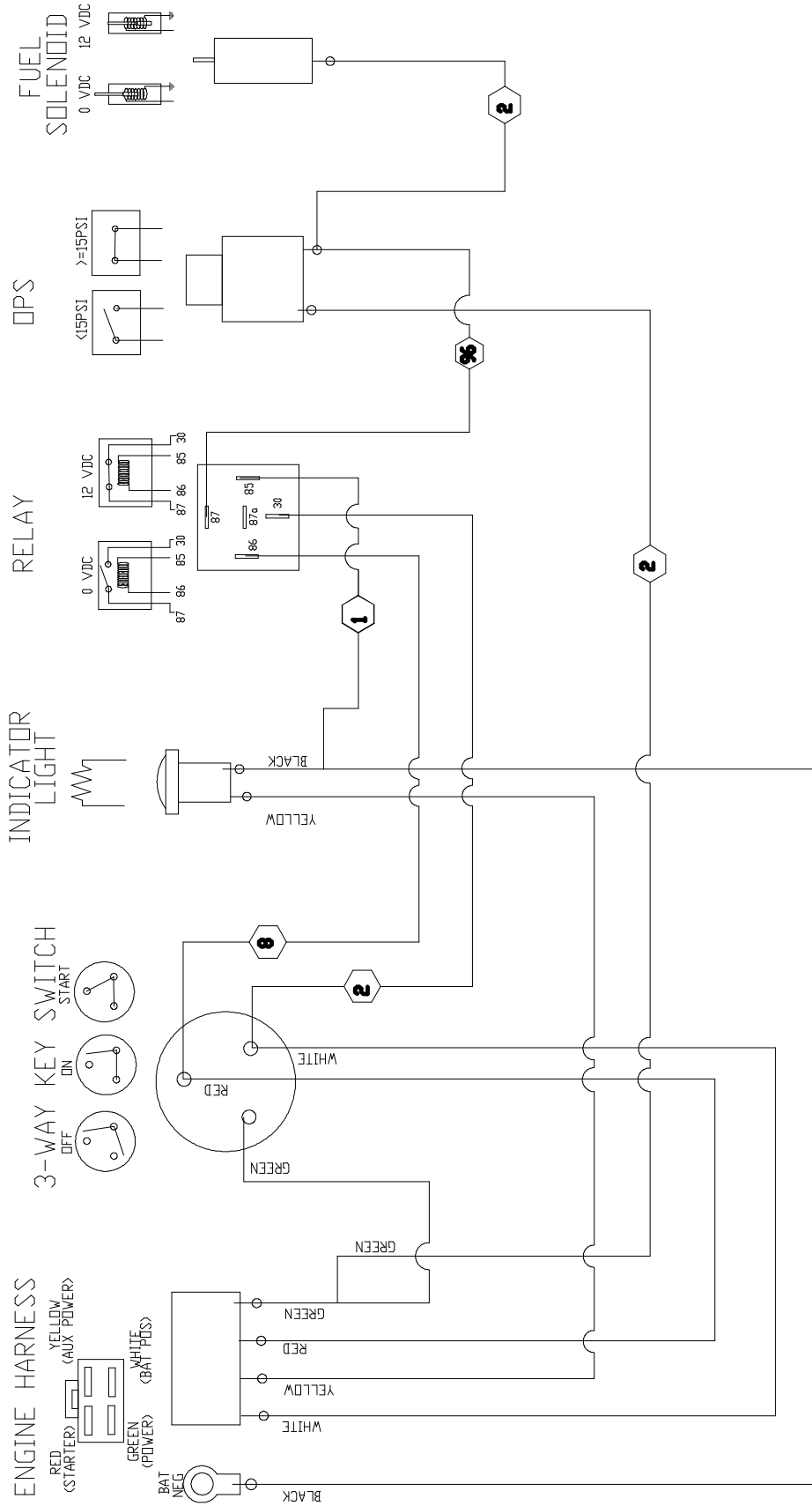


REF #	PART NUMBER	QTY	DESCRIPTION
1	16248-000	8	.25-20 Flange Nut
2	20952-001	2	Rubber Bumper
3	300148-10	2	Inside Bracket
4	300148-7	2	Lifting Eye
5	300149-9	2	Lifting Eye Support
6	420-001	4	10-24 X 3/4 Phillips Screw
7	47136-000	2	5/16-18 Nylock Hex Nut
8	512-000	8	.25 Washer
9	526-000	2	Washer
10	64858-001	8	3/4 Button Head Cap Screw
11	64858-011	2	5/16 Button Head Cap Screw
12	96286-006	2	Nylon Flat Washer
13	99671-000	4	10-24 Hex Nut

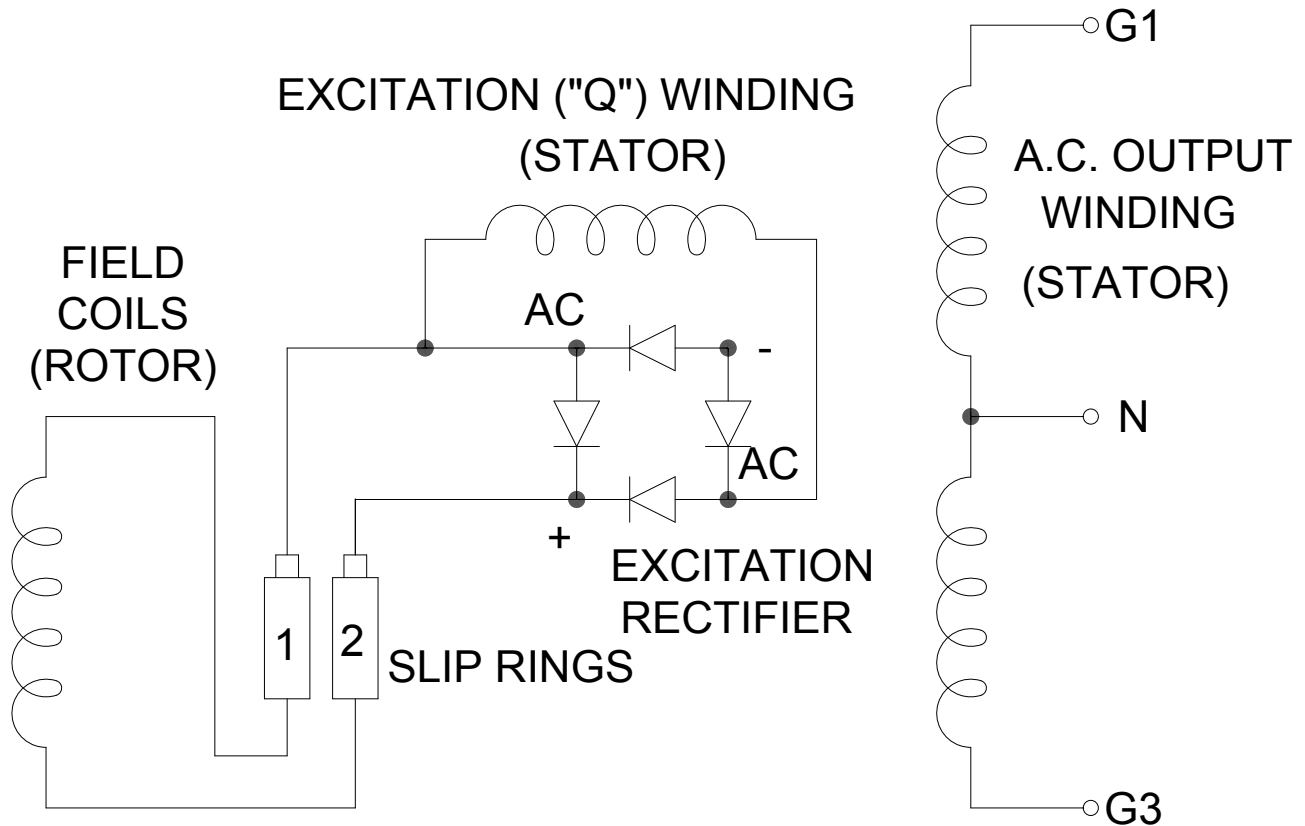
WIRING DIAGRAM



ENGINE WIRING DIAGRAM



AC SCHEMATIC



GENERATOR SCHEMATIC

GENERATOR SPECIFICATIONS:

G1 to Neutral	0.11 Ohms
G3 to Neutral	0.18 Ohms
"Q" Winding	0.80 Ohms
Rotor	11.5 Ohms
Winding Spec.	SS1544
AC Connection	AC373
AC Residual Volts	7.0 VAC L-L