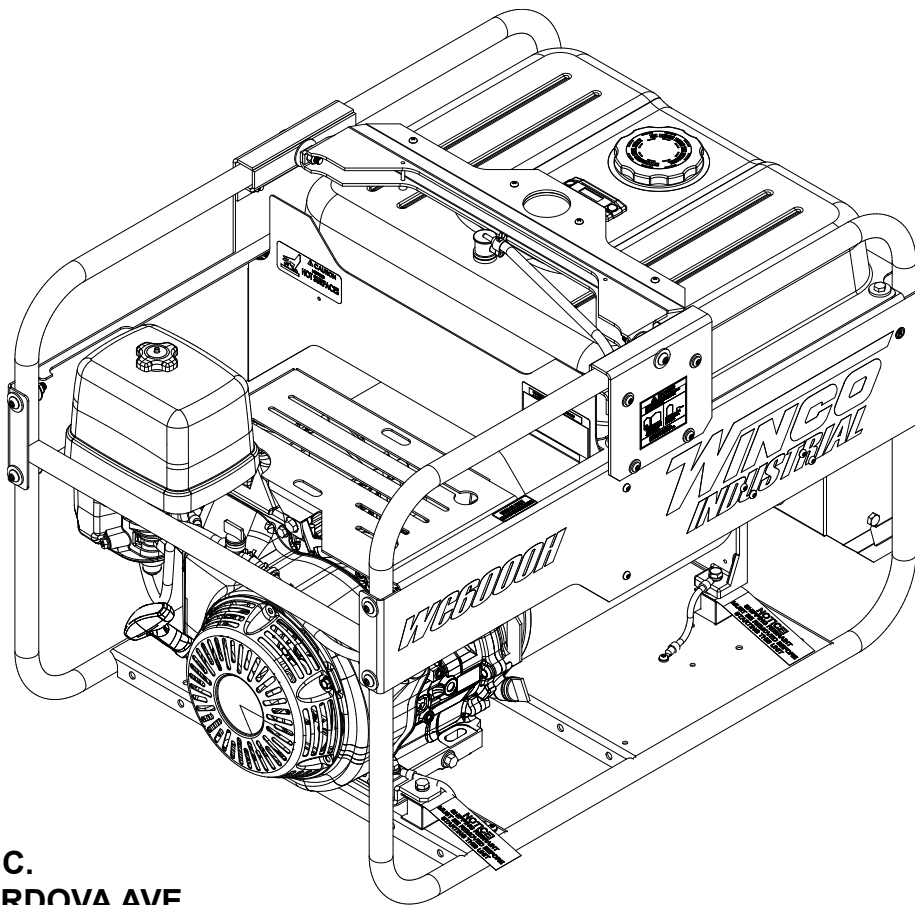


# **WINCO<sup>®</sup> INC**

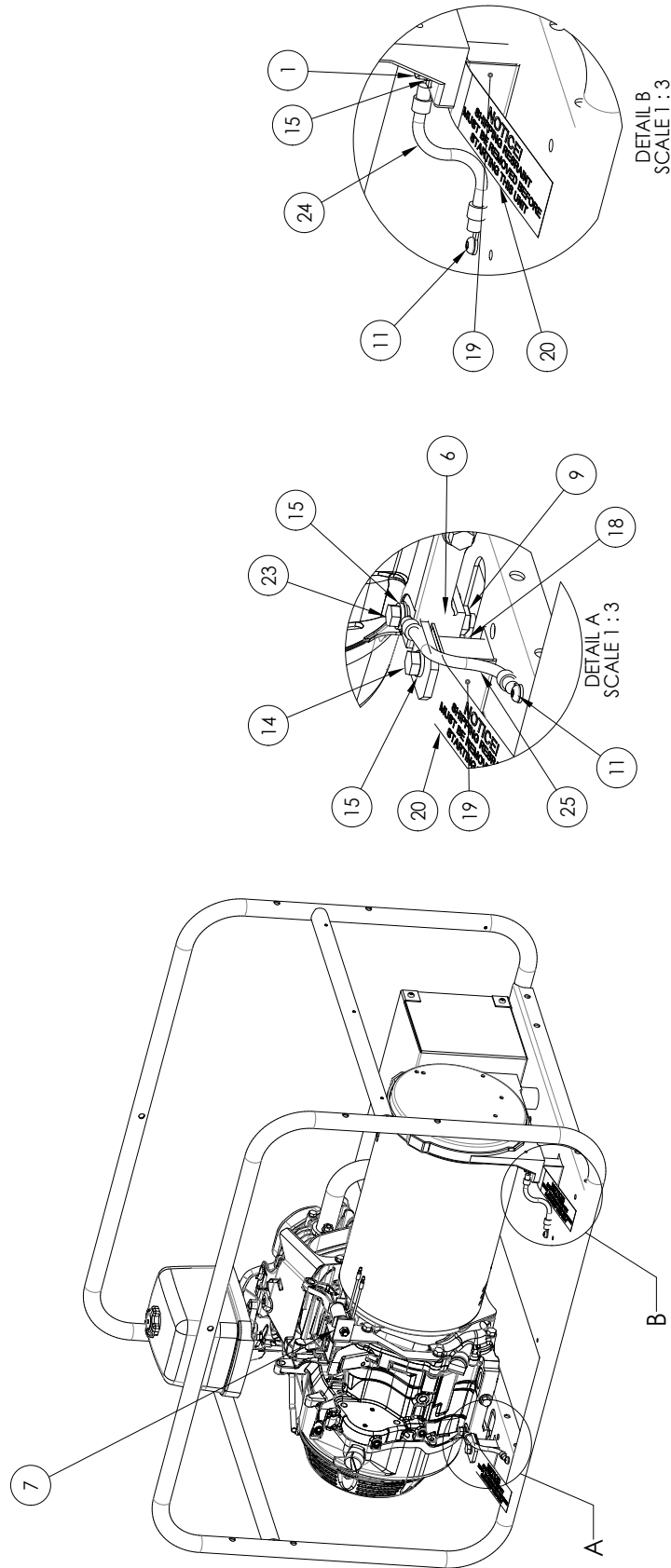
## **ILLUSTRATED PARTS LIST**

### **WC6000H/D WC6000HE/D**

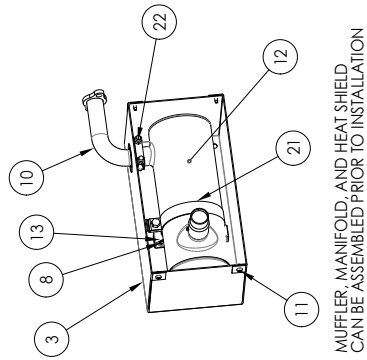
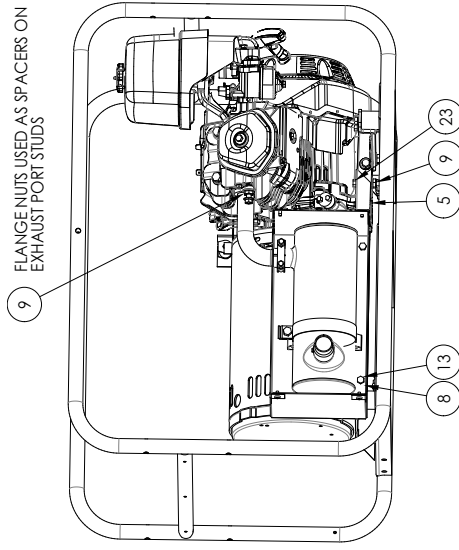


**WINCO INC.  
225 S. CORDOVA AVE.  
LE CENTER, MN 56057  
(507) 357-6821  
SERVICE DEPT.  
(507) 357-6831  
wincogen.com**

# ENGINE / GENERATOR ASSEMBLY

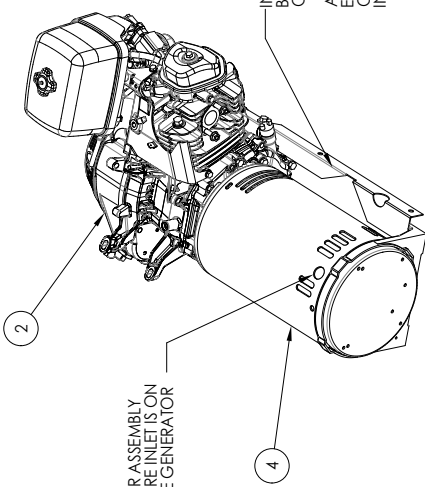


# ENGINE / GENERATOR ASSEMBLY



INSTALL HEAT SHIELD MOUNTING BRACKET PRIOR TO REMAINDER OF EXHAUST COMPONENTS  
 AFTERWARDS, THE REST OF THE EXHAUST CAN BE SLID ON AS ONE UNIT AND THEN BOLTED INTO PLACE.

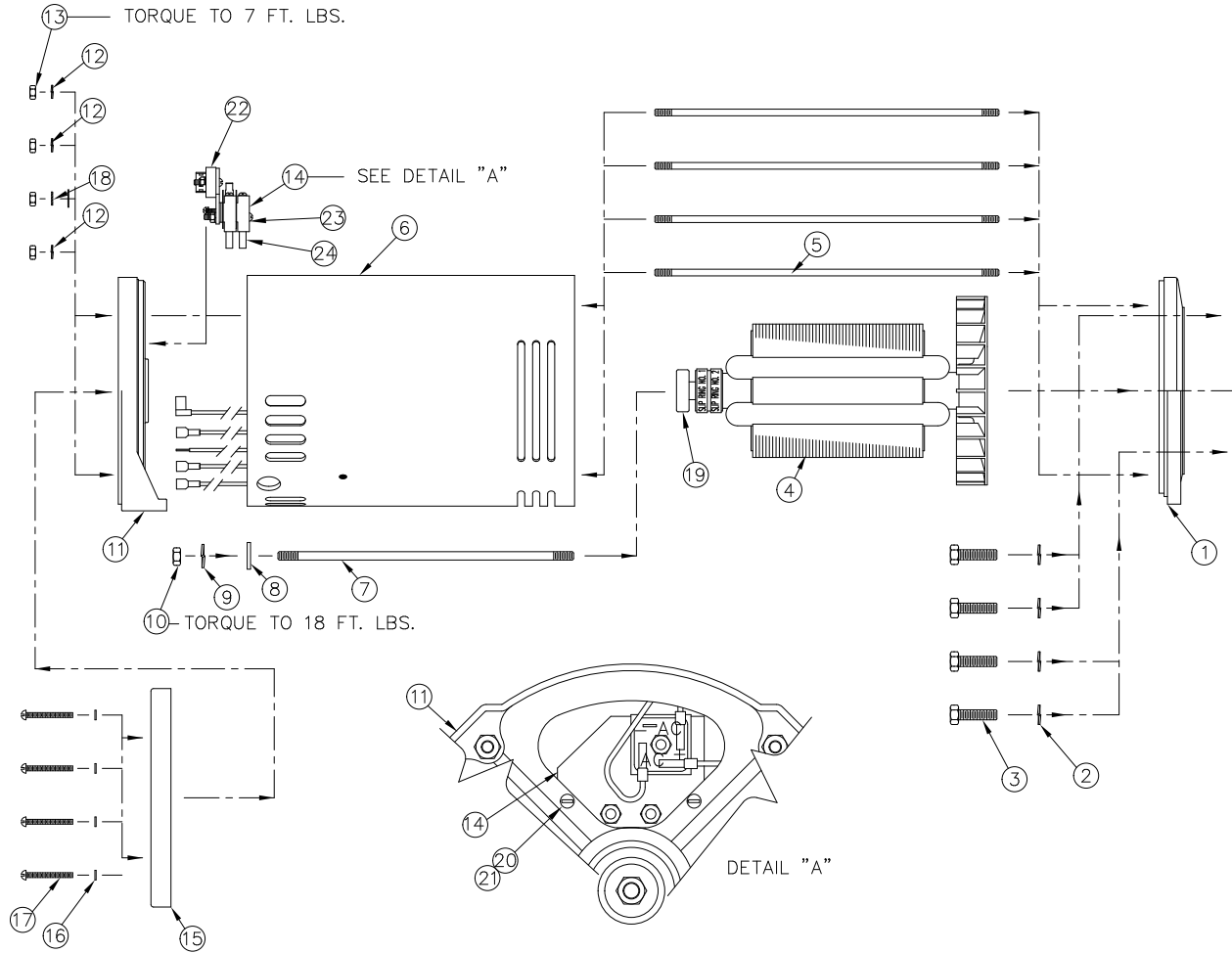
MUFFLER, MANIFOLD, AND HEAT SHIELD CAN BE ASSEMBLED PRIOR TO INSTALLATION



NOTE:  
 DURING GENERATOR ASSEMBLY ORIENT SHELL SO WIRE INLET IS ON THE TOP SIDE OF THE GENERATOR

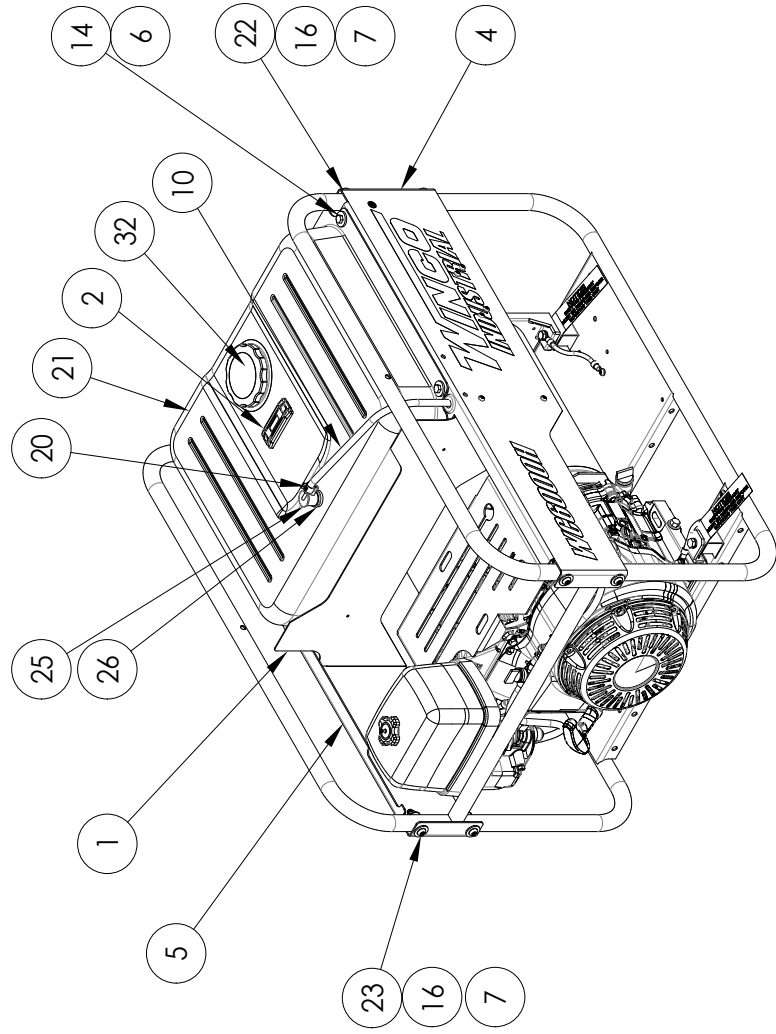
REF #	PART NUMBER	QTY	DESCRIPTION
1	1116-000	2	5/16-18 X 1 Bolt
2	15467-000	1	Engine, Honda Model: GX340 RT1VDE2
3	15687-013	1	Heat Shield
4	15532-006	1	Generator Assembly
5	15687-014	1	Heat Shield Mounting Bracket
6	15929-004	1	Engine Shock Mount Adapter
7	16178-002	1	Idle Control Installation
8	16248-000	4	.25-20 Flange Nut
9	16249-000	9	5/16-18 Flange Nut
10	16479-004	1	Exhaust Manifold
11	21698-001	6	Torx Screw
12	350590-11	1	Muffler
13	463-000	4	.25-20 X .5 Bolt
14	477-000	2	5/16-18 X 5/8 Bolt
15	480-000	6	5/16 Lock Washer
16	526-000	1	Flat Washer
17	63073-043	1	Cradle
18	64062-000	4	Shock Mount
19	64157-011	2	Shipping Bracket
20	64158-000	2	Tag – Shipping Bracket
21	93484-012	1	Muffler Mounting Bracket
22	93489-018	1	Muffler Clamp
23	9416-000	3	5/6-18 X 1.75 Bolt
24	9769-145	2	Lead Wire Assembly
NI	15769-002	1	Spark Arrestor
NI	BPR6ES	1*	NGK Spark Plug
NI	17210-ZE3-010	1**	Air Cleaner
NI	17218-ZE3-000	1**	Outer Air Cleaner
NI	15428-100	1	Keys for Engine (set of two)
*	NGK Part #		
**	Honda Part #		
NI	Not Illustrated		

# GENERATOR ASSEMBLY

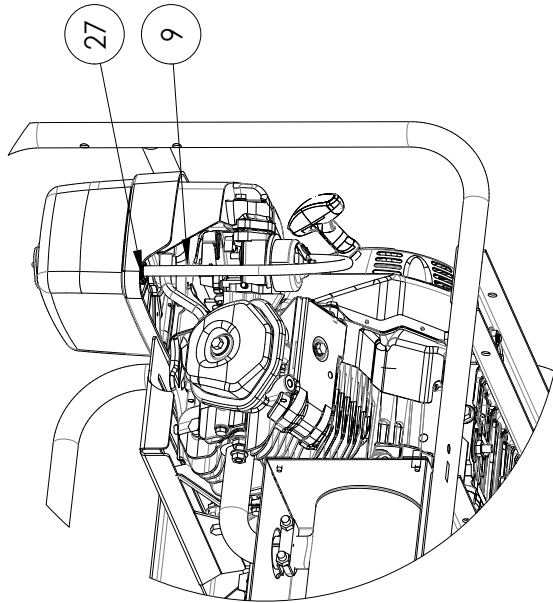


REF #	PART NUMBER	QTY	DESCRIPTION
1	15008-000	1	Engine Bracket
2	481-000	4	Split Lock Washer
3	91658-003	4	3/8-16 X 1.5 Bolt
4	15522-002	1	Rotor Assembly
5	15068-009	4	1/4-20 Threaded Stud
6	15528-002	1	Stator Assembly
7	23197-026	4	5/16-24 Threaded Stud
8	23558-000	1	Flat Washer
9	480-001	1	5/16 Split Lock Washer
10	15193-000	1	5/16-24 Hex Nut
11	15533-002	1	Bearing Bracket
12	479-000	3	1/4 Split Lock Washer
13	15192-000	4	1/4-20 Hex Nut
14	15523-000	1	Brush Holder Assembly
15	15085-000	1	End Cover
16	21975-000	4	#10 Internal Tooth Lock Washer
17	15013-001	4	#10-32 X 1.75 Rnd Head Screw
18	4516-000	1	Star Lock Washer
19	50215-000	1	Bearing
20	24988-000	2	#6-32 X .5 Screw
21	566-000	2	#6 Split Lock Washer
22	53976-000	1	Bridge Rectifier
23	59690-000	2	Brush Holder
24	23607-000	2	AC Brush

# FUEL SYSTEM ASSEMBLY

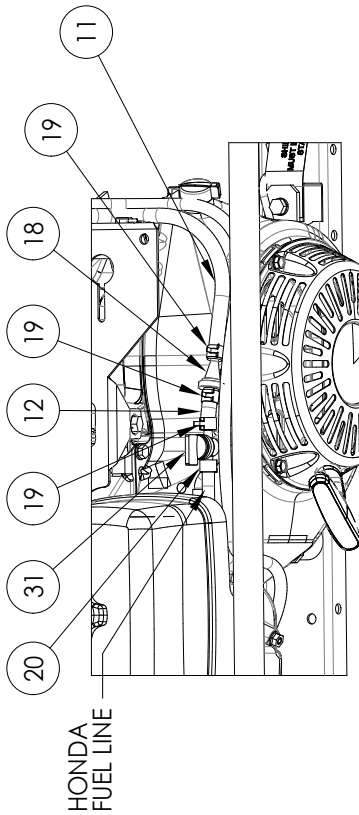


FOR EASE, INSTALL PURGE LINE BEFORE  
INSTALLING RIGHT SIDERAIL. USE SCREW  
TYPE CLAMP TO SECURE ONTO AIR  
BOX PORT.

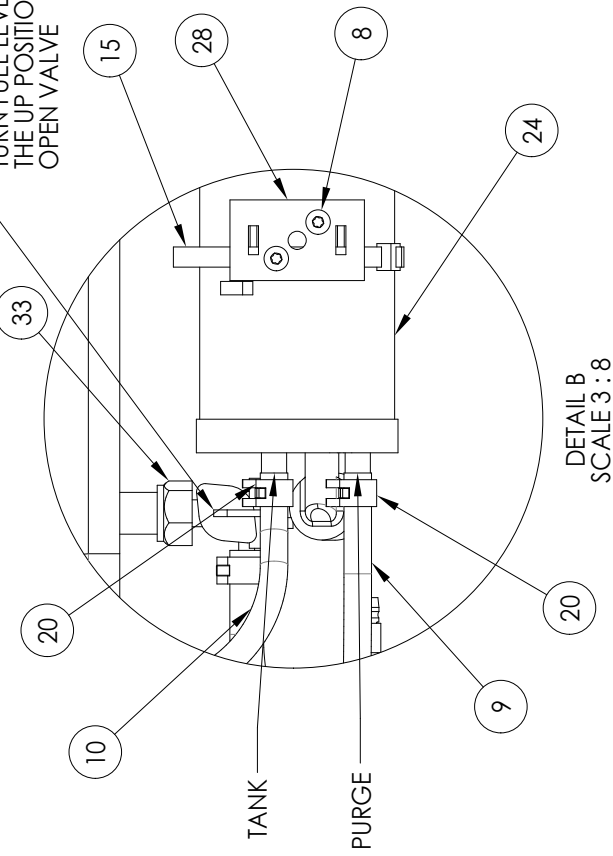


# FUEL SYSTEM ASSEMBLY

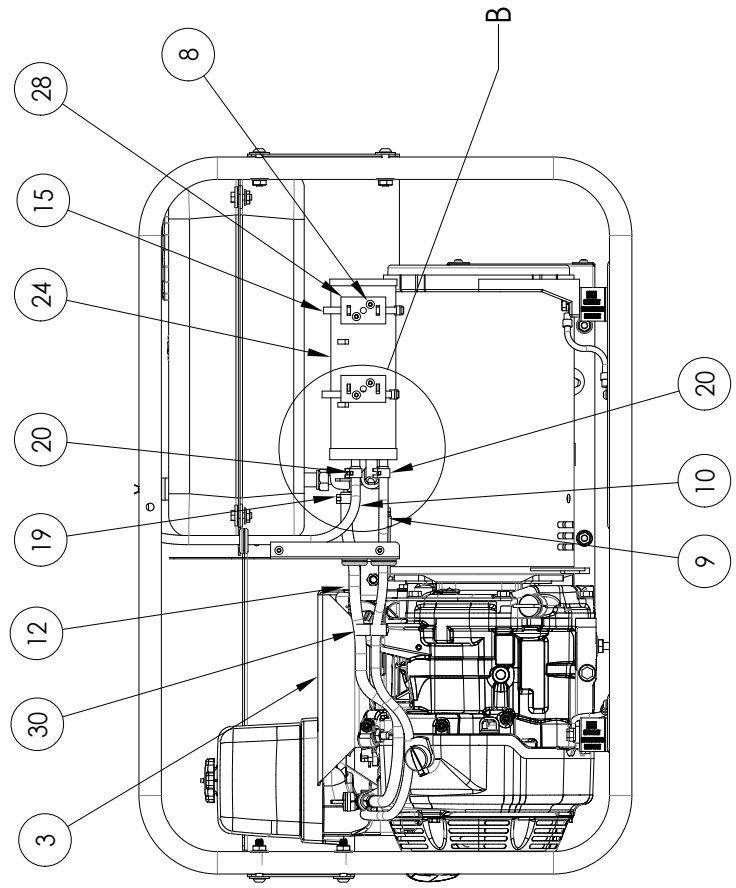
CUT 4" OFF HONDA FUEL LINE PRIOR TO INSTALLING SHUT OFF VALVE AND DISCARD.



TURN FUEL LEVER TO THE UP POSITION TO OPEN VALVE



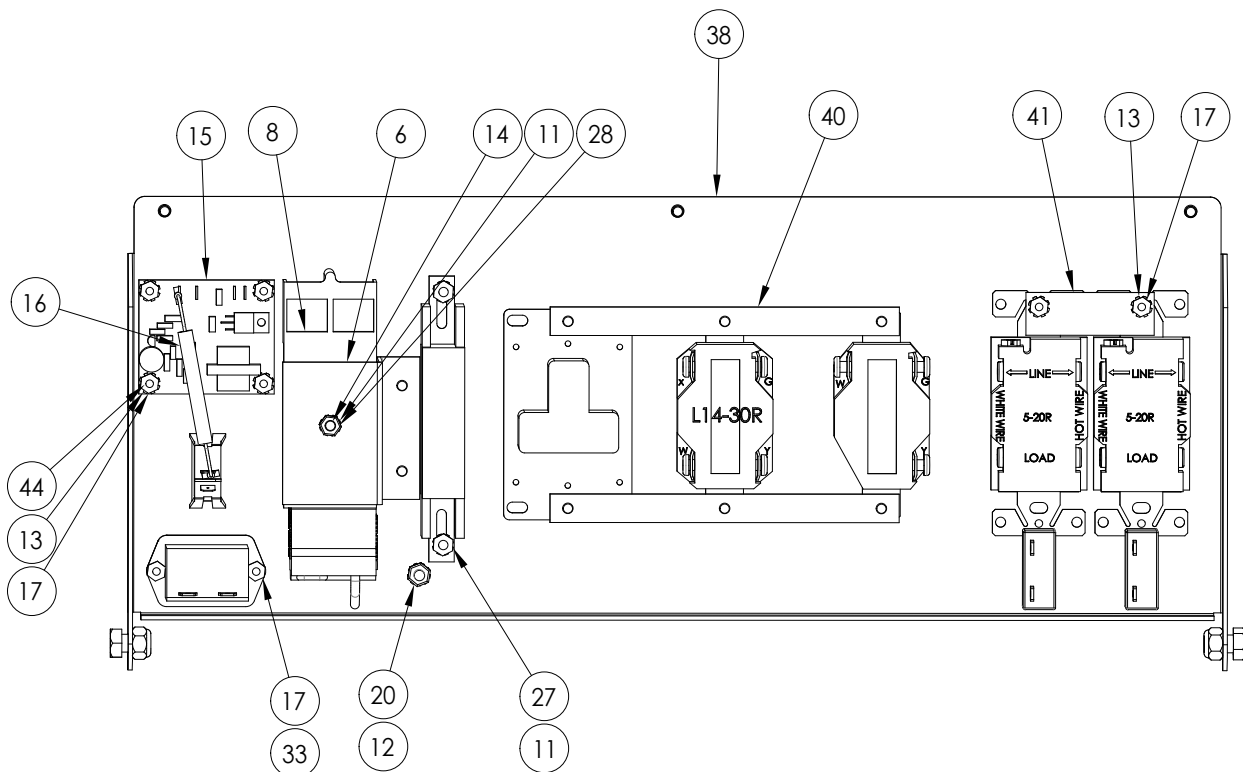
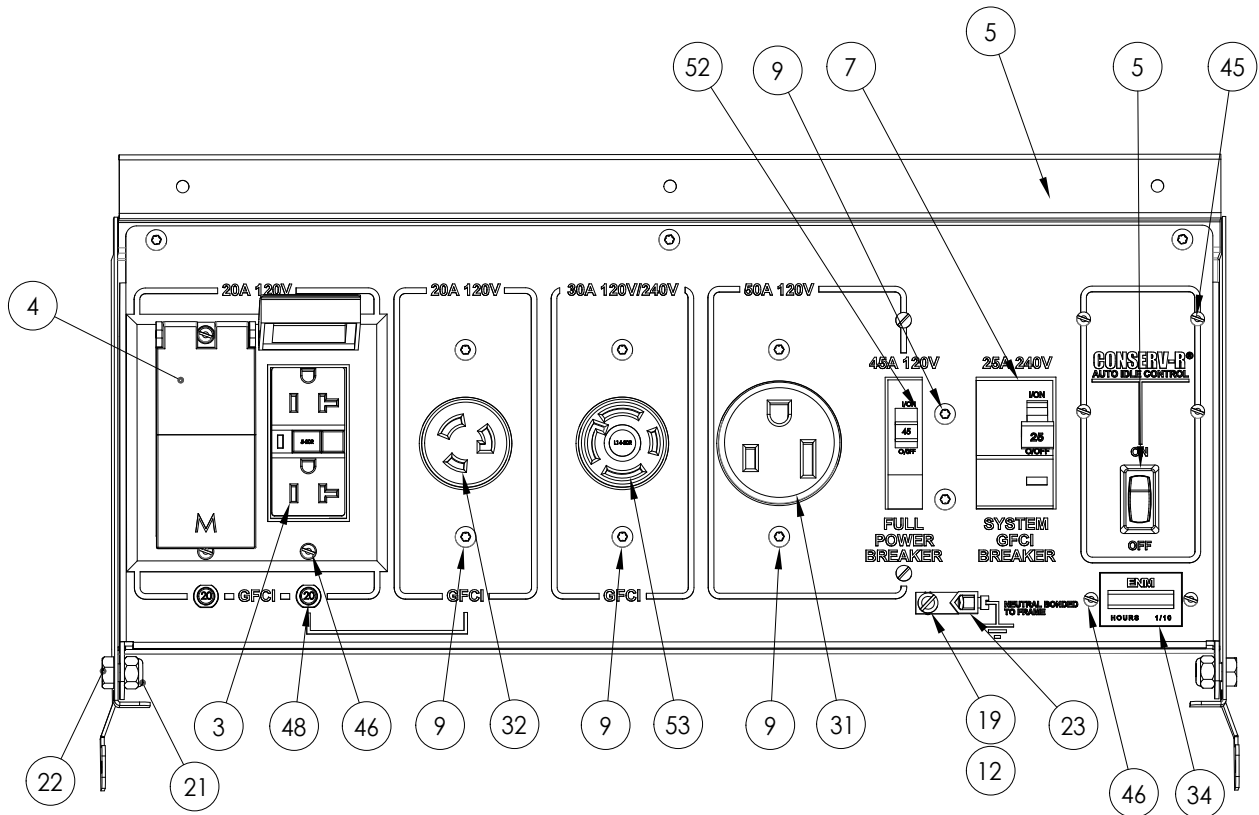
DETAIL B  
SCALE 3 : 8



REF #	PART NUMBER	QTY	DESCRIPTION
1	15464-017	1	Generator Divider
2	64024-402	1	Fuel Gauge
3	15679-008S	1	Governor Cover
4	300216-3SWC6H	1*	Left Side Rail
4	300216-3SWC6HE	1**	Left Side Rail
5	300217-3SWC6H	1*	Right Side Rail
5	300217-3SWC6HE	1**	Right Side Rail
6	16248-000	5	.25-20 Flange Nut
7	16249-000	11	5/16-18 Flange Nut
8	21698-001	8	Torx Screw
9	40077-001	34"	3/16 Fuel Hose
10	40077-002	20"	3/16 Fuel Hose
11	40078-003	17"	¼ Fuel Hose
12	40078-033	2"	¼ Fuel Hose
13	40730-000	3	Grommet
14	466-000	4	.25-20 X .75 Bolt
15	49975-013	2	Cable Tie
16	526-000	8	Washer
17	580-000	3	5/16-18 X 1.25 Bolt
18	62496-005	1	40-70 micron Fuel Filter
19	62999-001	4	.5 OD Red Hose Clamp
20	62999-005	4	.41 OD Green Hose Clamp
21	64024-013	1*	7 Gallon Steel Fuel Tank
*	Slosh valve with grommet (80903-002) is used with this fuel tank.		
22	64858-003	4	5/16-18 X 1.5 Btn Head Screw
23	64858-004	4	5/16-18 X 1.75 Btn Head Screw
24	80902-000	1	7 Gallon Carbon Canister
25	80903-000	1	Slosh Valve (revision B)
25	80903-002	1	Slosh Valve with Grommet (revision C)
26	80903-001	1	Grommet (revision B)
27	81018-009	1	Hose Clamp
28	81902-000	1	Mounting Bracket
29	95281-000	1	.25-20 X 1.25 Bolt
30	97391-002	2	Tube Clamp
31	98771-005	1	Plastic Fuel Valve
32	64024-401	1	Sealed Fuel Cap
33	64024-404	1	Fuel Valve Under Tank
NI	64024-406	4	Rubber Bushing
NI	64024-405	4	Anti-Crash Insert
NI	Not Illustrated		
*	For Model WC6000H/D		
**	For Model WC6000HE/D		

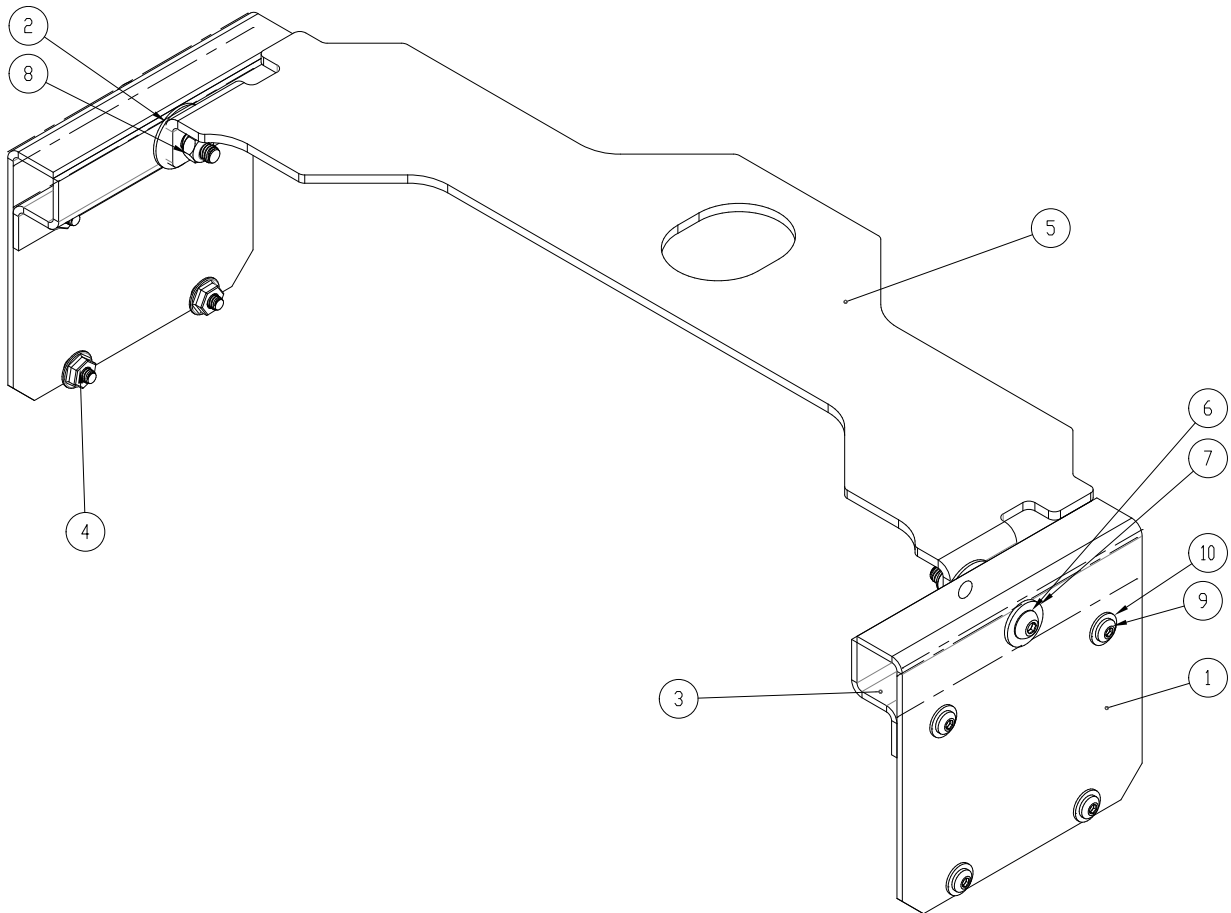


# RECEPTACLE PANEL ASSEMBLY



REF #	PART NUMBER	QTY	DESCRIPTION
3	15147-001	2	NEMA 5-20R Receptacle
4	15620-007	1	2-Gang GFCI Cover
5	15458-027S	1	Front Receptacle Panel
6	16319-000	1	CB Mounting Bracket
7	16488-016	1	25A 240V GFCI Circuit Breaker
8	16489-001	1	Modified CB Terminal Block
9	21698-001	11	Torx Screw
11	21976-000	3	#8 External Tooth Lock Washer
12	22423-000	2	#10 External Tooth Lock Washer
13	22989-000	6	#6 External Tooth Lock Washer
14	24198-000	1	#8-32 X 5/8 Bolt
15	300042	1	Idle Control Module
16	300108	1	Resistor 10W 250 Ohm
17	394-000	8	#6-32 Hex Nut
19	420-000	1	10-24 X 3/4 Bolt
20	456-000	1	#10-24 Hex Nut
21	47136-000	2	5/16-18 Nylock Hex Nut
22	473-000	2	5/16-18 X 1/2 Bolt
23	48042-001	1	Ground Lug
27	5113-000	3	#8-32 Hex Nut
31	54545-000	1	NEMA 5-50R Receptacle
32	56279-000	1	NEMA L5-20R Receptacle
33	566-000	2	Split Lock Washer
34	58166-001	1	Running Time Meter
38	15221-025S	1	Rear Receptacle Panel
39	6402-001	2	8-32 X 3/8 Screw
40	64045-006	2	3-Hole Mounting Strap
41	64045-041	1	2-Hole Mounting Strap
42	64089-000	1	SPST Rocker Switch
44	64855-001	4	Nylon Spacer
45	7792-000	4	6-32 X 5/8 Bolt
46	7792-001	6	6-32 X 1/2 Bolt
48	91286-001	2	20A 1-Pole Circuit Breaker
52	91977-006	1	45A 1-Pole 120V Circuit Breaker
53	97360-000	1	NEMA L14-30R Receptacle
NI	62486-000	1	Grommet
NI	Not Illustrated		

# LIFTING EYE ASSEMBLY



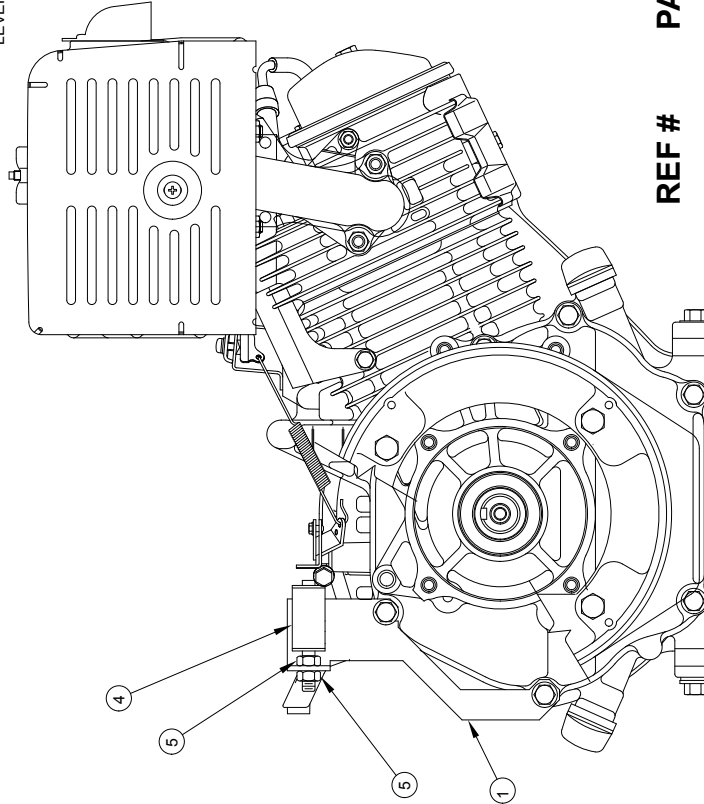
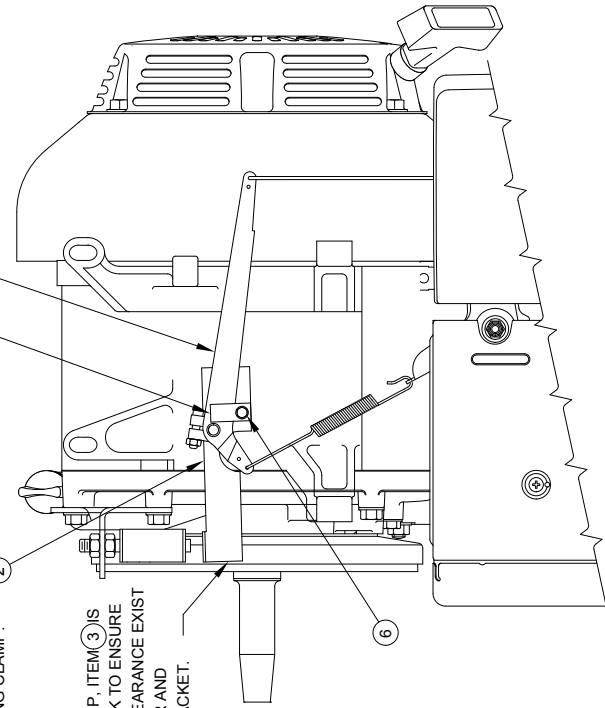
REF #	PART NUMBER	QTY	DESCRIPTION
1	300149-10	2	Lifting Eye Support
2	96286-007	2	Nylon Flat Washer
3	300148-11	2	Inside Bracket
4	16248-000	8	.25-20 Flange Nut
5	512-000	8	.25 Washer
6	300148-22	2	Lifting Eye
7	64858-006	2	5/16 Button Head Cap Screw
8	526-000	2	Washer
9	47136-000	2	5/16-18 Nylock Hex Nut
10	64858-001	8	3/4 Button Head Cap Screw

# ENGINE IDLE CONTROL (CONSERVER) ASSEMBLY

REMOVE GOVERNOR ARM AND REPLACE AFTER INSTALLATION OF ITEM(4) ROTATION OF SHAFT AND ARM TO STOP AT DIRECTION OF SPRING PULL BEFORE TIGHTENING GOVERNOR SHAFT CLAMP.

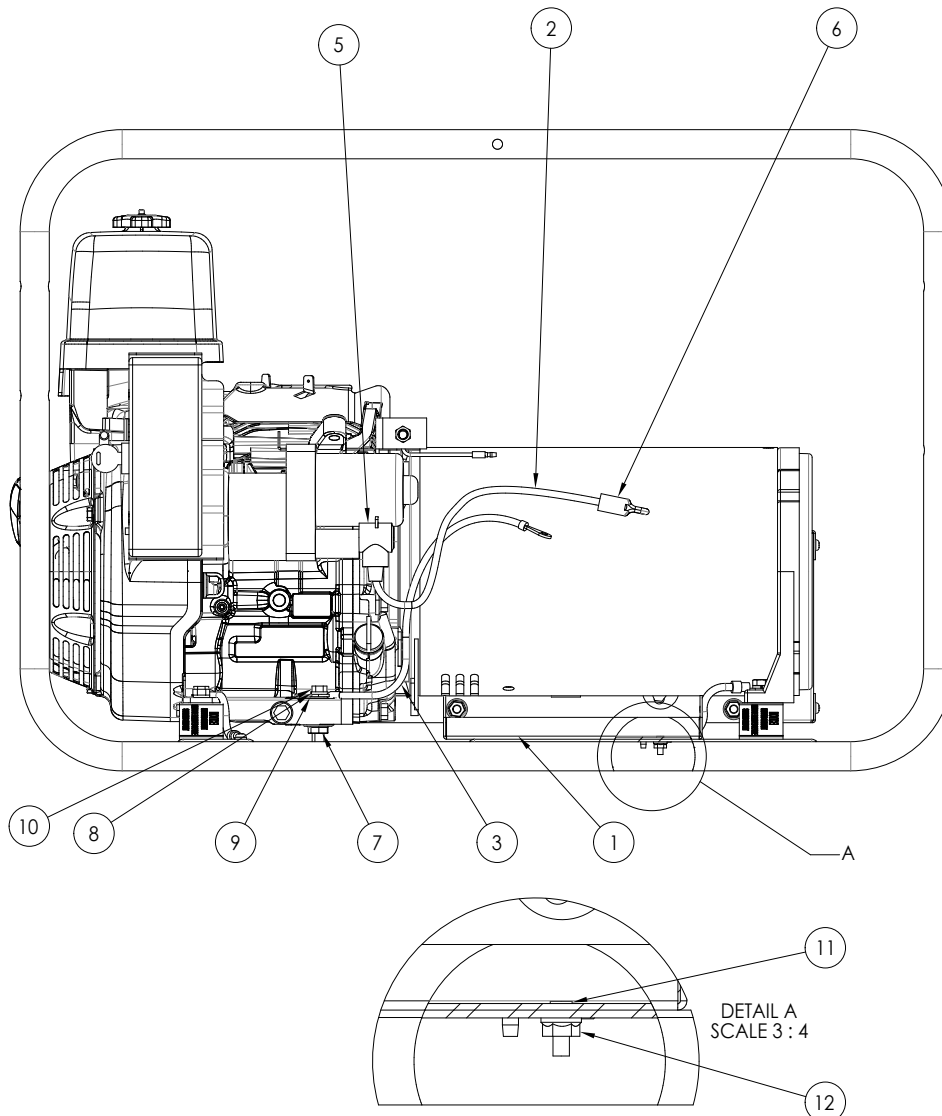
ALIGN HOLES IN GOVERNOR LEVER WITH LARGE HOLE IN CONSERVER LEVER BEFORE SECURING CLAMP.

AFTER CLAMP, ITEM(3) IS SECURED CHECK TO ENSURE THAT .06" CLEARANCE EXIST BETWEEN LEVER AND GENERATOR BRACKET.



REF #	PART NUMBER	QTY	DESCRIPTION
1	15416-000	1	Conserver Mounting Bracket
2	15415-000	1	Conserver Lever
3	62309-000	1	Clamp
4	15182-000	1	Conserver Electro-Magnet
5	44894-000	2	5/16-24 Hex Jam Nut
6	55556-000	1	Self Tapping Screw

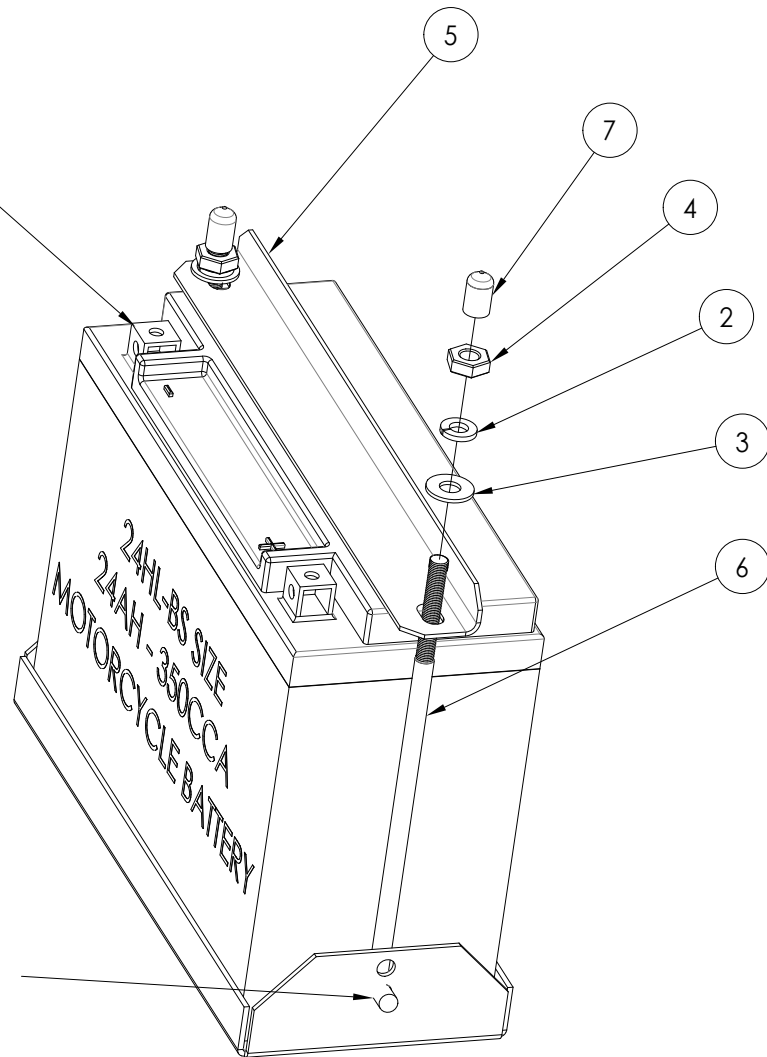
# BATTERY INSTALLATION



REF #	PART NUMBER	QTY	DESCRIPTION
1	15676-011	1	Battery Tray
2	15767-014	1	Battery Positive (+) Cable
3	15767-030	1	Battery Negative (-) Cable
4	15807-003	1	Battery Hold Down Kit
5	16145-000	1	Terminal Insulator
6	16234-000	1	Cap Plug
7	16249-000	1	5/16-18 Flange Nut
8	480-000	1	5/16 Split Lock Washer
9	526-000	1	Washer
10	9416-000	1	5/16-18 X 1.75 Bolt
11	95568-000	2	10-24 X 5/8 Threaded Stud
12	99671-000	2	10-24 Hex Nut

# BATTERY HOLD DOWN KIT (15807-003)

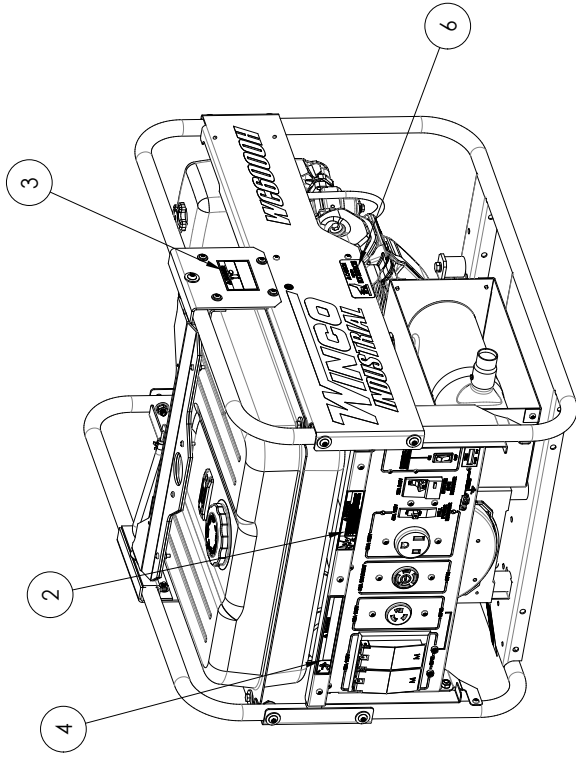
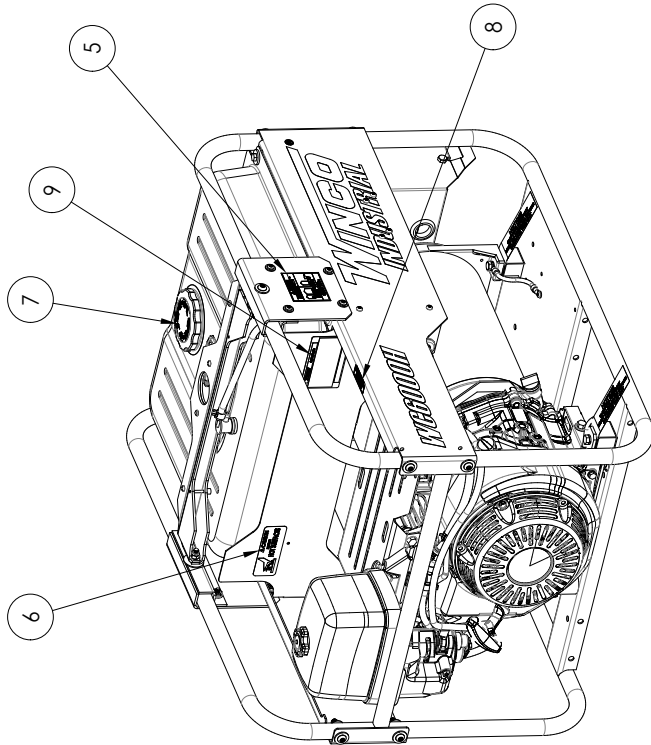
SCREW OR BOLT + NUT IS  
TYPICALLY SUPPLIED WITH  
BATTERY. A M6 METRIC  
SCREW OR BOLT IS THE  
COMMON SIZE USED.



LOWER HOLE IS TYPICAL FOR BATTERY  
INSTALLATION.

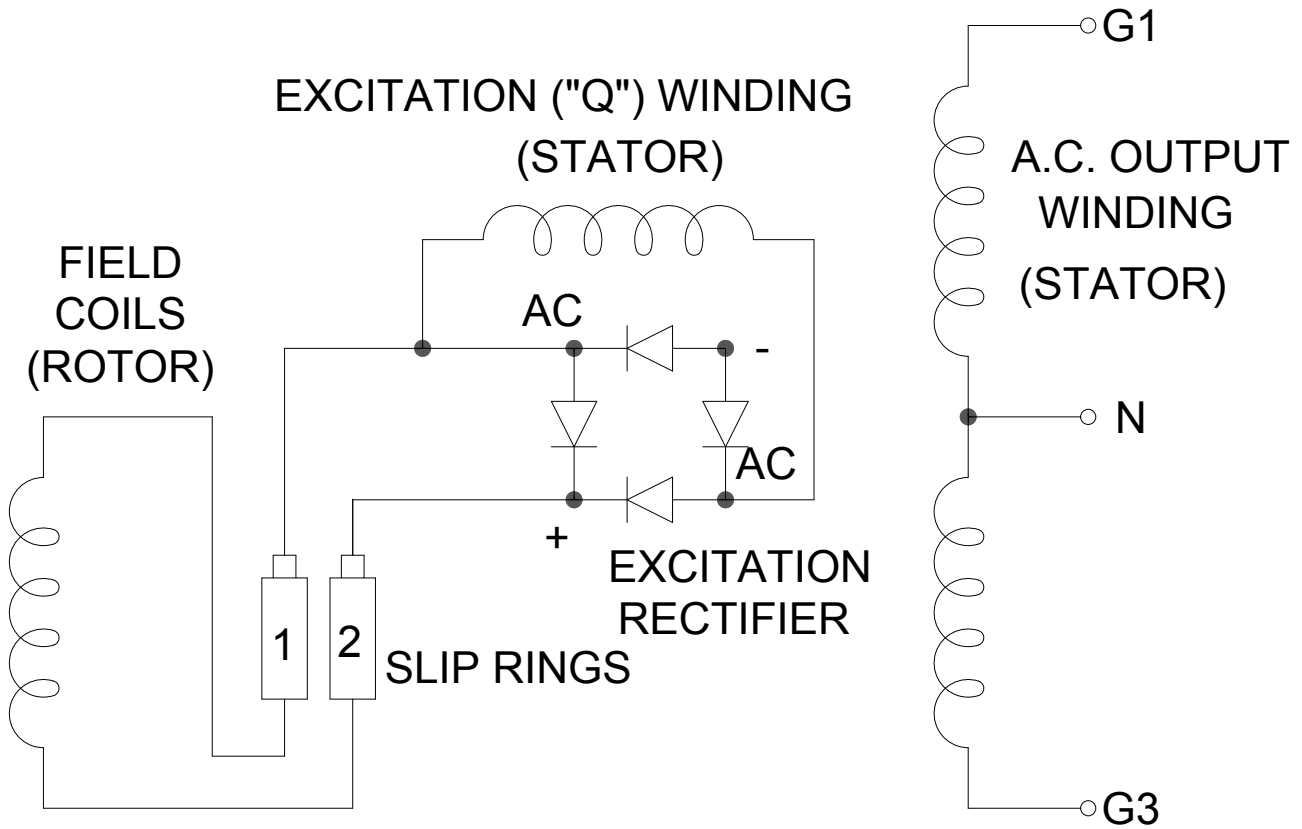
REF #	PART NUMBER	QTY	DESCRIPTION
2	479-000	2	Lock Washer
3	512-000	2	Washer
4	638-000	2	Hex Nut
5	64167-004	1	Hold Down Bracket
6	64240-002	2	Hold Down Rod
7	64278-000	2	Round Vinyl Cap

# DECAL INSTALLATION



REF #	PART NUMBER	QTY	DESCRIPTION
1	15209-000	1	Decal Set
2	15209-001	1*	Gasoline Decal
3	15209-002	1*	Danger CO2 Decal
4	15209-003	1*	Electrical Shock Decal
5	64918-000	2	Danger Use Outside Decal
6	63941-001	2	Hot Surface Decal
7	15209-013	1	Fuel Type Decal
8	15209-014	1	Check Oil Decal
9	63966-004	1	Winco Nameplate
*	Part of 15209-000		

# AC SCHEMATIC



GENERATOR SCHEMATIC

## GENERATOR SPECIFICATIONS:

G1 to Neutral	0.11 Ohms
G3 to Neutral	0.18 Ohms
"Q" Winding	0.80 Ohms
Rotor	11.5 Ohms
Winding Spec.	SS1544
AC Connection	AC373
AC Residual Volts	7.0 VAC L-L



# WIRING DIAGRAM

