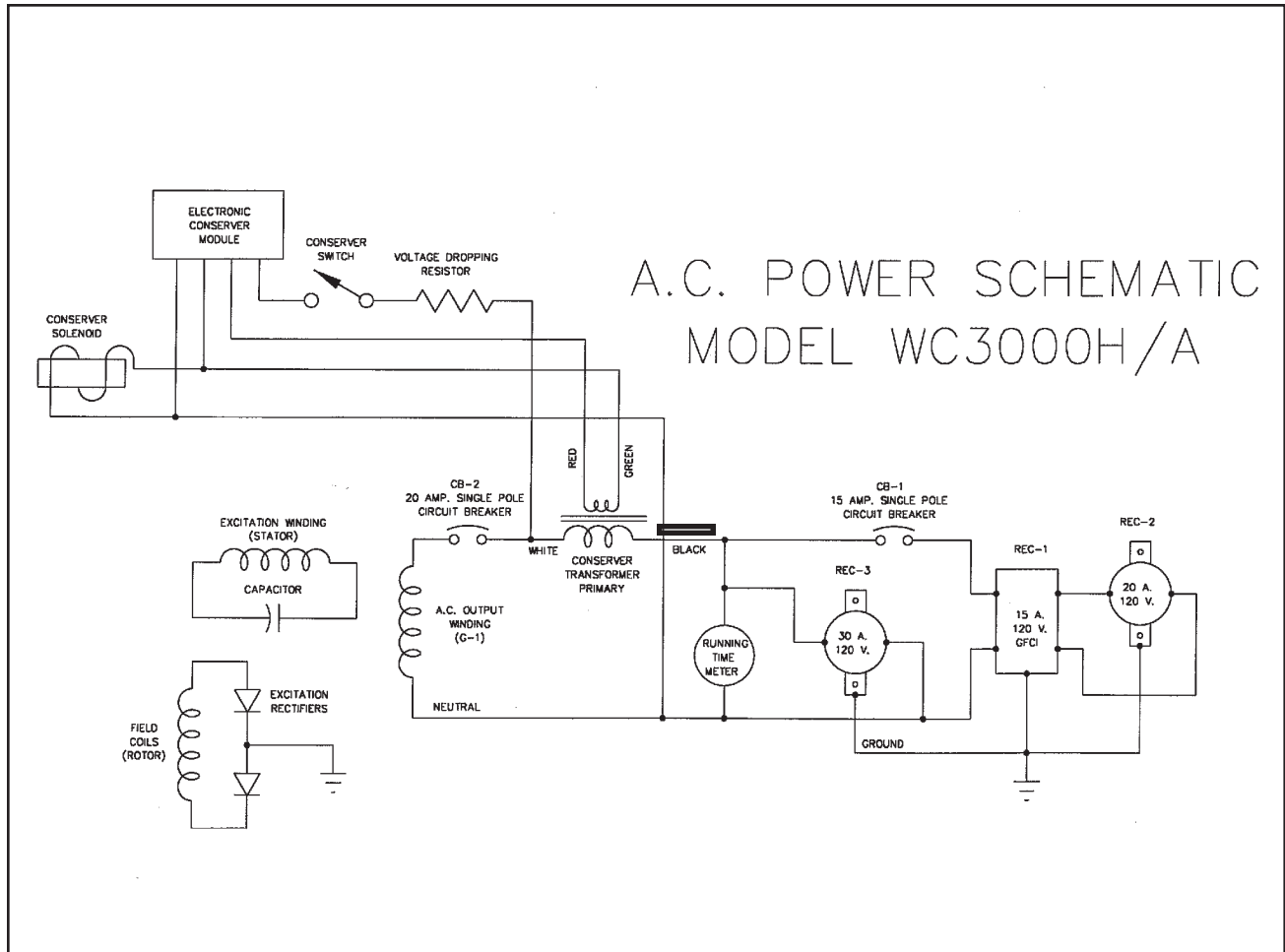


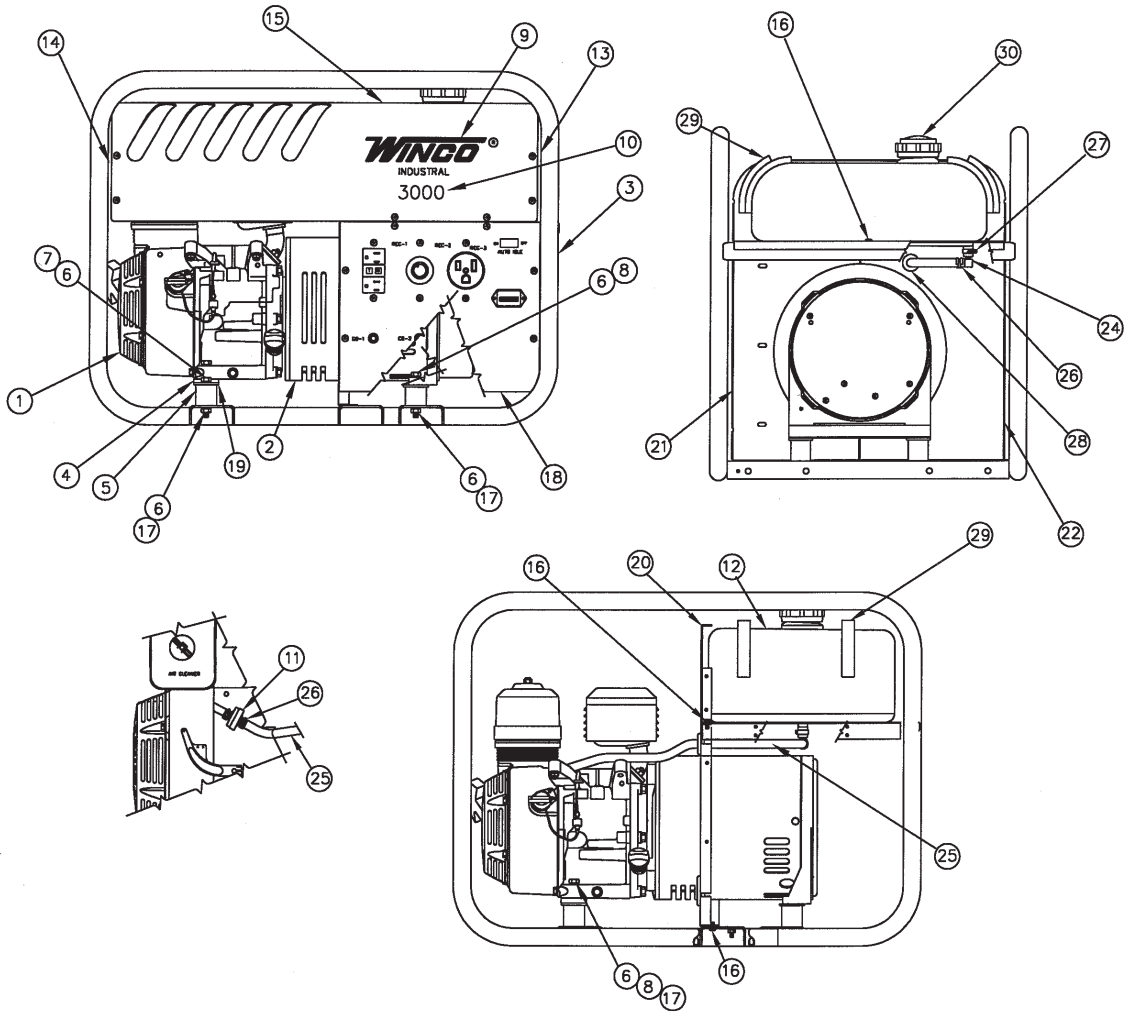
MODEL WC3000H/A



GENERATOR SPECIFICATIONS

Rotor	0.87 Ohms
G1 to N	0.55 Ohms
Capacitor Leads	1.75 Ohms
AC Residual Voltage	7.0 VAC G1 to N
Winding Spec.	SS#1530
AC Connection	AC#369

COMPLETE UNIT ASSEMBLY

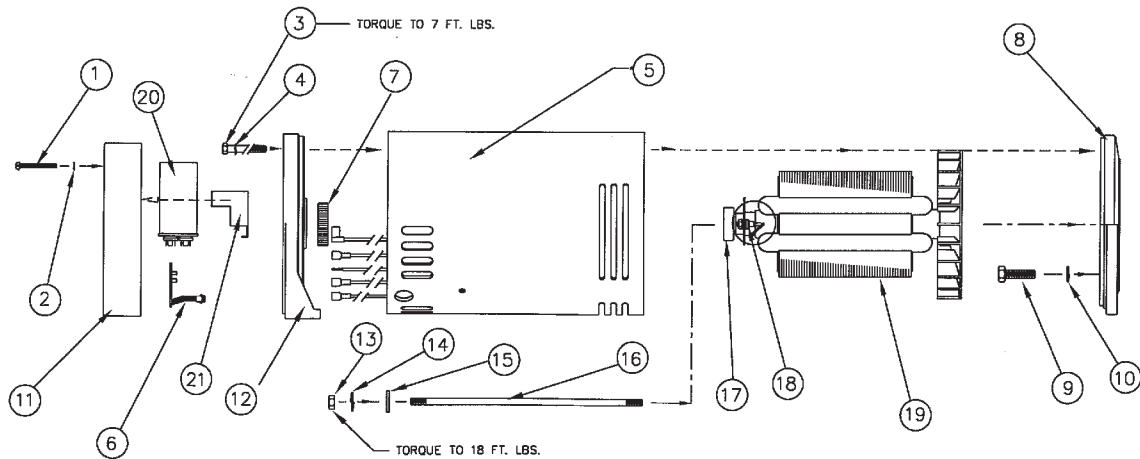


REF	PART NBR	QTY	DESCRIPTION
1	15250-001	1	Engine GX160 K1 VW12
2	15041-011	REF	Generator Assembly
3	63073-009	1	Cradle Assembly
4	15986-001	1	Engine Mounting Bracket
5	64062-000	4	Shockmounts
6	480-000	12	5/16 Lockwasher
7	467-000	2	5/16 - 18 X .75 Hex Head Bolt
8	9416-000	4	5/16 - 18 X 1.75 Hex Head Bolt
9	64214-042	1	WINCO Industrial, Decal
10	15370-003	1	Model, Decal
11	62496-000	1	Fuel Filter
12	64406-000	1	3.5 Gallon Fuel Tank
13	15144-006	1	Tank Baffle, Generator End
14	15144-007	1	Tank Baffle, Engine End
15	15227-009	1	Top Cover
16	21698-001	18	#10 X 3/8 Self Tapping Screw
17	458-000	6	5/16 - 18 Hex Nut
18	16176-005	REF	Receptacle Box Assembly
19	23760-000	4	1.5 OD X .344 ID Flat Washer
20	15462-010	1	Fuel Tank Tray

COMPLETE UNIT ASSEMBLY CONTINUED

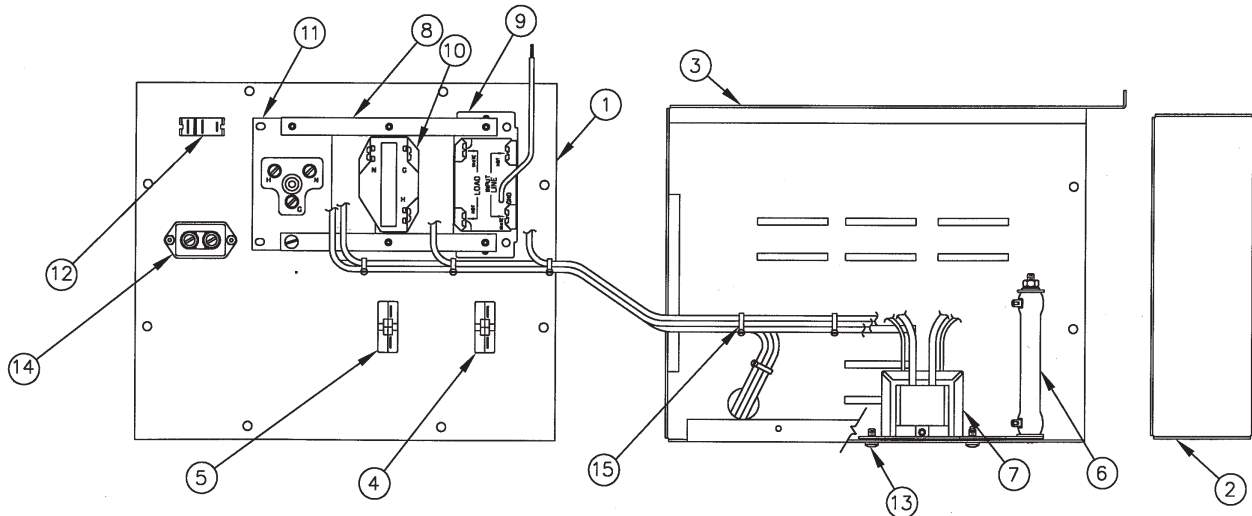
REF	PART NBR	QTY	DESCRIPTION
21	15223-012	1	Left Tank Support Panel
22	15222-012	1	Right Tank Support Panel
24	56879-000	1	Elbow
25	40078-000	26"	Fuel Line
26	62999-001	2	Fuel Hose Clamp
27	81018-008	1	Clamp
28	56927-000	1	Grommet
29	64101-000	48"	3/8 x 3/4 Foam
30	15482-000	1	Fuel Tank Cap

GENERATOR ASSEMBLY



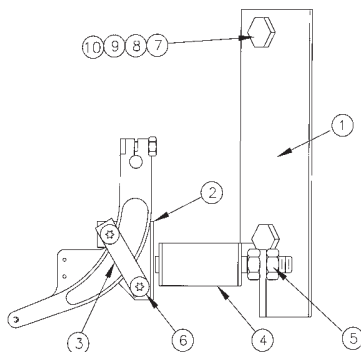
REF	PART NBR	QTY	DESCRIPTION
1	15013-001	1	#10 -32 X 1.75 Pan Screw
2	21975-000	1	#10 Lockwasher
3	15530-002	4	1/4 - 20 Special Stud
4	479-000	4	1/4 Lockwasher
5	15093-000	1	Stator Assembly Complete
6	15110-000	1	Conservar [®] Module
7	15122-000	1	Tolerance Ring
8	15053-001	1	Engine End Bracket
9	91547-000	4	5/16 - 24 X 1.0 Hex Head Bolt
10	480-000	4	5/16 Lockwasher
11	15106-000	1	End Cover Bare
12	15156-001	1	Bearing Bracket
13	15193-000	1	5/16 - 24 Hex Nut
14	480-001	1	5/16 Lockwasher
15	23558-000	1	11/32 X 1 1/8 Flat Washer
16	23197-007	1	Thru Bolt
17	55223-000	1	Bearing
18	15047-001	1	Diode (STD)
19	15045-003	1	Rotor Complete
20	15051-000	1	Capacitor
21	15088-000	1	Capacitor Strap

RECEPTACLE PANEL ASSEMBLY



REF	PART NBR	QTY	DESCRIPTION
1	15458-009	1	Front Panel, Bare
2	15221-010	1	End Panel
3	15221-011	1	Bottom, Top, Back Panel
4	91286-000	1	15 A. 120 V. Circuit Breaker
5	91286-001	1	20 A. 120 V. Circuit Breaker
6	48583-000	1	Resistor, 50 W. 150 Ohms
7	54196-000	1	Transformer
8	64045-006	2	3 Hole Mounting Strap
9	15147-002	1	15 A. 120 V. GFCI Duplex (5-15R)
10	56279-000	1	20 A. 120 V. Receptacle (L5-20R)
11	62725-000	1	30 A. 120 V. Receptacle (5-30R)
12	64089-000	1	S.P.S.T. Rocker Switch (Conserver®)

CONSERVER® ASSEMBLY



REF	PART NBR	QTY	DESCRIPTION
1	15412-000	1	Conserver® Mounting Bracket
2	15411-000	1	Conserver® Lever
3	15473-000	1	Clamp
4	15182-000	1	Magnet
5	44894-000	2	5/16 - 24 Jam Nut
6	21698-001	2	#10 X 3/8 Self Tapping Screw
7	95281-000	2	1/4 - 20 X 1.25 Hex Head Bolt
8	479-000	2	1/4 Lockwasher
9	512-000	2	1/4 Flat Washer
10	638-000	2	1/4 -20 Hex Nut

WINGCO® INC
A Division of DTE Dyna Technology Inc

225 South Cordova Avenue
Le Center MN 56057
507-357-6831