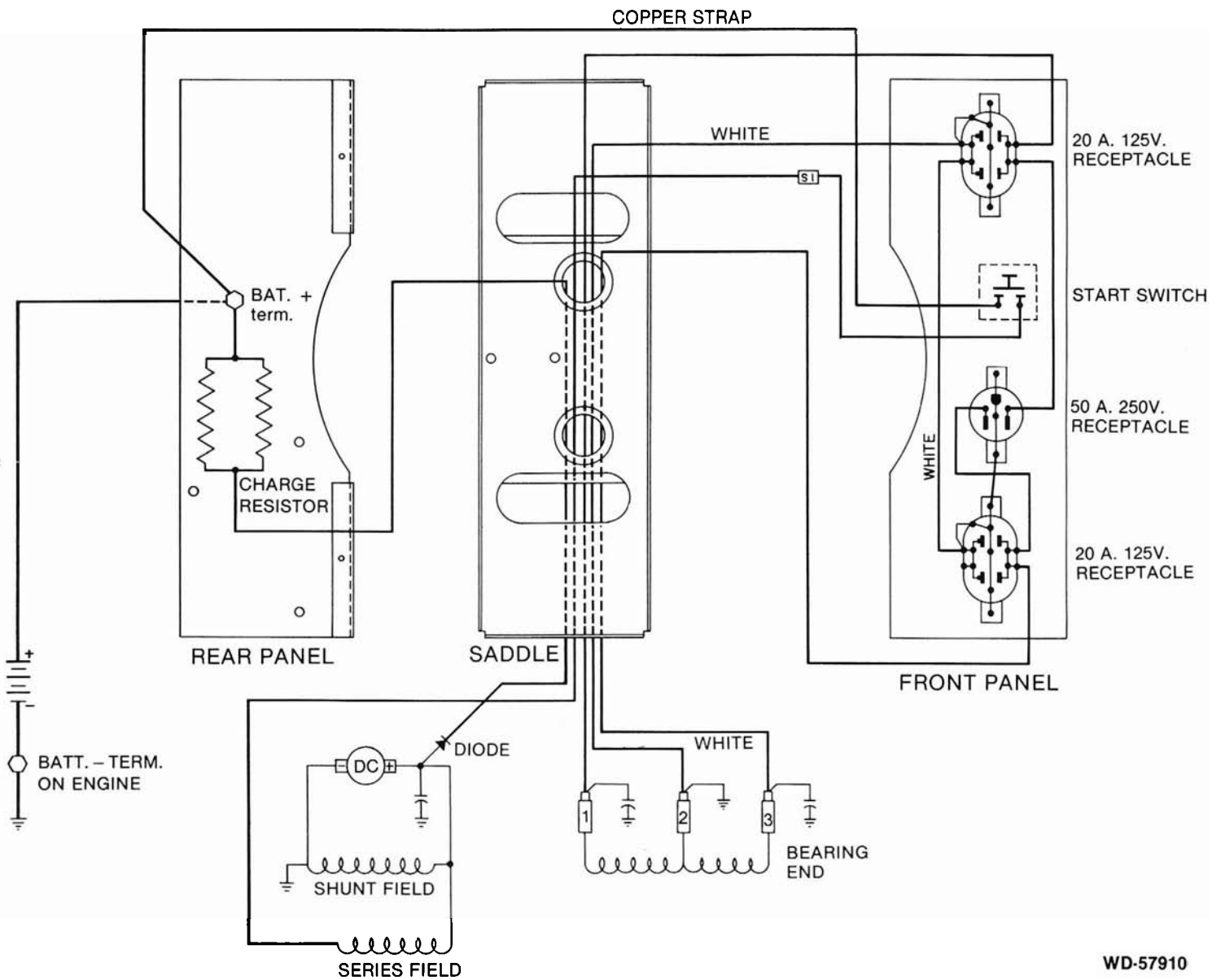


ILLUSTRATED PARTS LIST

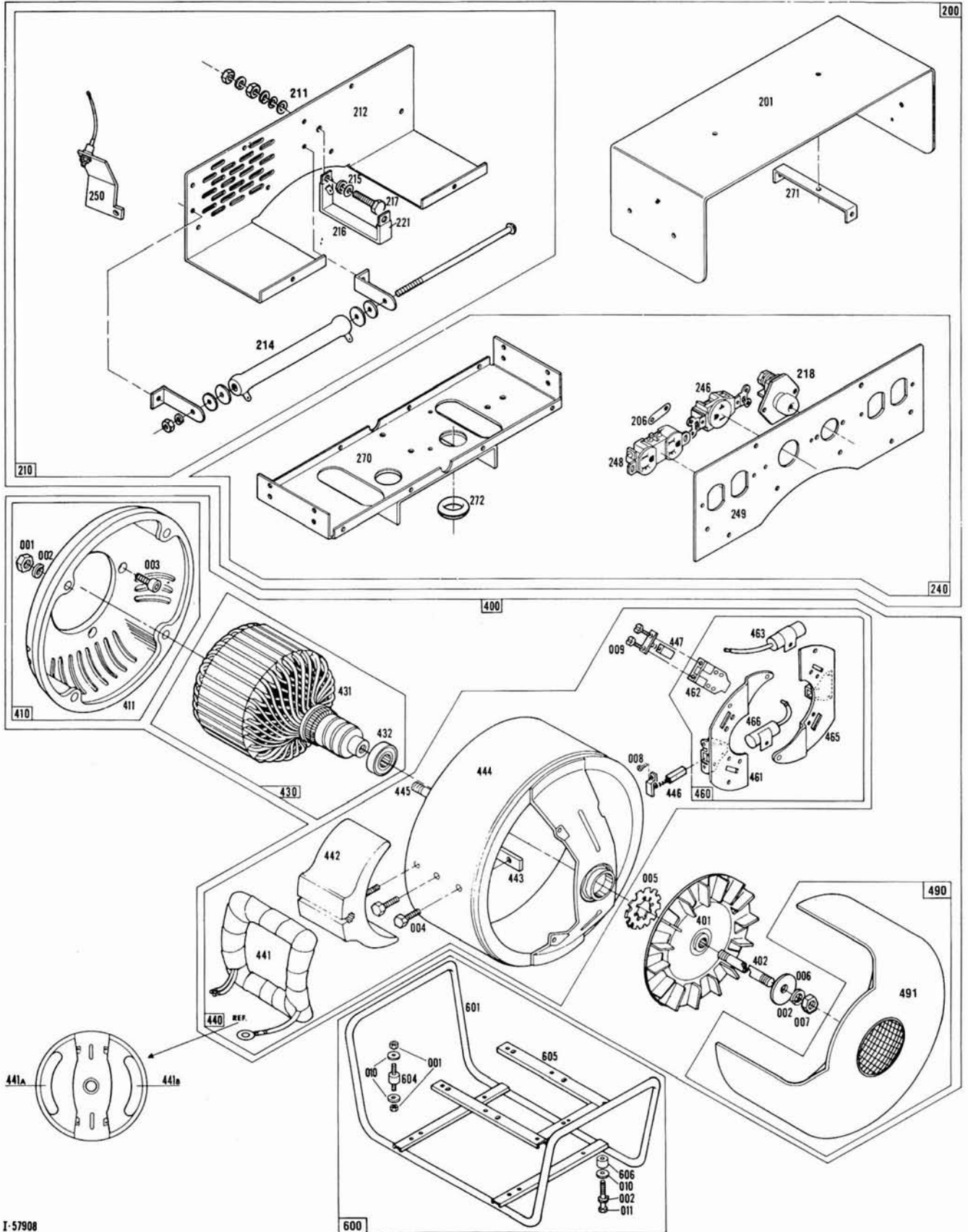
IP8BH-3E/A



WD-57910

SCHEMATIC DIAGRAM

This IPL contains wiring, illustration, parts list, ordering information and technical data to perform routine maintenance on this generator. Consult factory with model no., serial no. and test data for further assistance.



MODEL IP8BH-3E/A

REF. NO.	DESCRIPTION	QTY.	PART NO.	REF. NO.	DESCRIPTION	QTY.	PART NO.
000	Hardware			400	Generator Assembly		57723
001	Hex Nut 5/16-18	12	458	401	Fan Assembly	1	23404
002	Lockwasher 5/16 Split	14	480	402	Thru Bolt	1	23197-12
003	Screw Allen Hd. 7/16-14 x 7/8	4	23604	411	End Bracket	1	55493
004	Cap Screw 3/8-16 x 1 3/4	6	399	430	Armature Assembly	1	57628
005	Lockwasher Int. Tooth 11/16	1	40552	431	Armature	1	57628-1
006	Flatwasher	1	23558	432	Bearing	1	50215
007	Hex Nut 5/16-24	1	23605				
008	Mach. Screw 10-24 x 3/8	4	4637	440	Field Shell & Coil Assembly	1	57724-1
009	Machine Screw 8-24 x 5/16	18	40746	441A	Field Coil	1	59146
010	Flat Washer	9	23760	441B	Field Coil	1	59146-1
011	Cap Screw 5/16-18 x 1 1/2	1	468	442	Pole Shoe	2	42882
				443	Pole Shoe Retainer	2	51697
100	Type Drive Engine B & S 326432-0300-01	1	58655	444	Field Shell & Bracket	1	57678
				445	Stud	4	51434
				446	Brush D.C.	2	47683
200	Control Box	1	57909	447	Brush A.C.	9	55536
201	Cover	1	59073				
271	Brace	2	51576	460	Brush Rack Assembly		52374
				461	Riveted Brush Plate LH	1	47684
210	Rear Panel Ass'y	1	57912	462	Brush Holder A.C.	9	23500
211	Insulation Washer	1	6892	463	Capacitor A.C.	2	41221
212	Rear Panel (Bare)	1	59124	465	Riveted Brush Plate RH	1	47684-1
214	Resistor Ass'y	2	54599	466	Capacitor D.C.	1	41180
215	Shoulder Washer	1	21981				
216	Copper Strap	2	52789-11	491	End Cover	1	55007
217	Machine Screw	1	21974				
221	Insulation Sleeving	1	54041-2	600	Cradle Assembly		
				601	Cradle	1	51817-1
240	Front Panel Ass'y	1	57911	604	Shock Mount	4	23623
206	Ground Strip	3	41387-2	605	Subframe	1	57677
218	Starter Switch	1	2210	606	Spacer	1	20561
246	Receptacle 250V	1	57325				
248	Receptacle (Duplex)	2	50766				
249	Front Panel (Bare)	1	57686				
250	Heat Sink & Rectifier	1	54732				
270	Saddle	1	56926				
272	Rubber Grommet	2	56927				

PARTS ORDERING INFORMATION REQUIRED



To fill your order for service parts, please advise the complete Generator model number and serial number, part number(s), and part description. If in doubt, consult the factory prior to placing the order. Send all parts orders to WINCO, Division of Dyna Technology, Inc., 225 South Cordova Ave., Le Center, MN 56057.

TECHNICAL DATA

GENERATOR SPECIFICATIONS:

Watts—8000; Volts—115/230; Amps.—35; PH—1; Hz-60; RPM—3600

Nominal Voltage:	No Load:	Full Load:
115 VAC	132 VAC	112 VAC
230 VAC	264 VAC	224 VAC

Resistance:

Field Coils— $5.8 \pm .2$ ohms
Armature—Less than 1 ohm

Excitation Voltage: Approximately

46 Volts D.C.

Separately Excited:

12 VDC to Positive Field Lead (Disconnected from brush and brush removed)
50 to 70 VAC Output

BASIC TEST PROCEDURE:

Refer to illustration for component location by Reference Number.

Example: No output—Check field coils for opens or shorts. Reference Numbers 441A and 441B

No Output:

- Check for loose or open connections.
- Check brushes, A.C. and D.C., for wear, proper seating and not stuck in holder. Reference Numbers 446 D.C., and 447 A.C.
- Check field coils for opens or shorts. Reference numbers 441A, and 441B.
- Check armature for opens or shorts, Reference Number 431.

Low Voltage—No Load:

- Check generator speed/frequency (3600 RPM nominal).
- Check for loose or open connections.
- Check winding resistance. Reference Numbers 441A, 441B and 431.
- Check slip rings and commutator for cleanliness.

Low Voltage—Full Load:

- Check generator load.
- Check for loose or open connections.
- Check generator speed/frequency (3600 RPM nominal).
- Check winding resistance. Reference Numbers 441A-441B and 431.

SS-1385

WINGO[®]

Division of
DYNA TECHNOLOGY, INC.
225 South Cordova
Le Center, MN 56057
Phone (612) 357-6821
Telex 290753