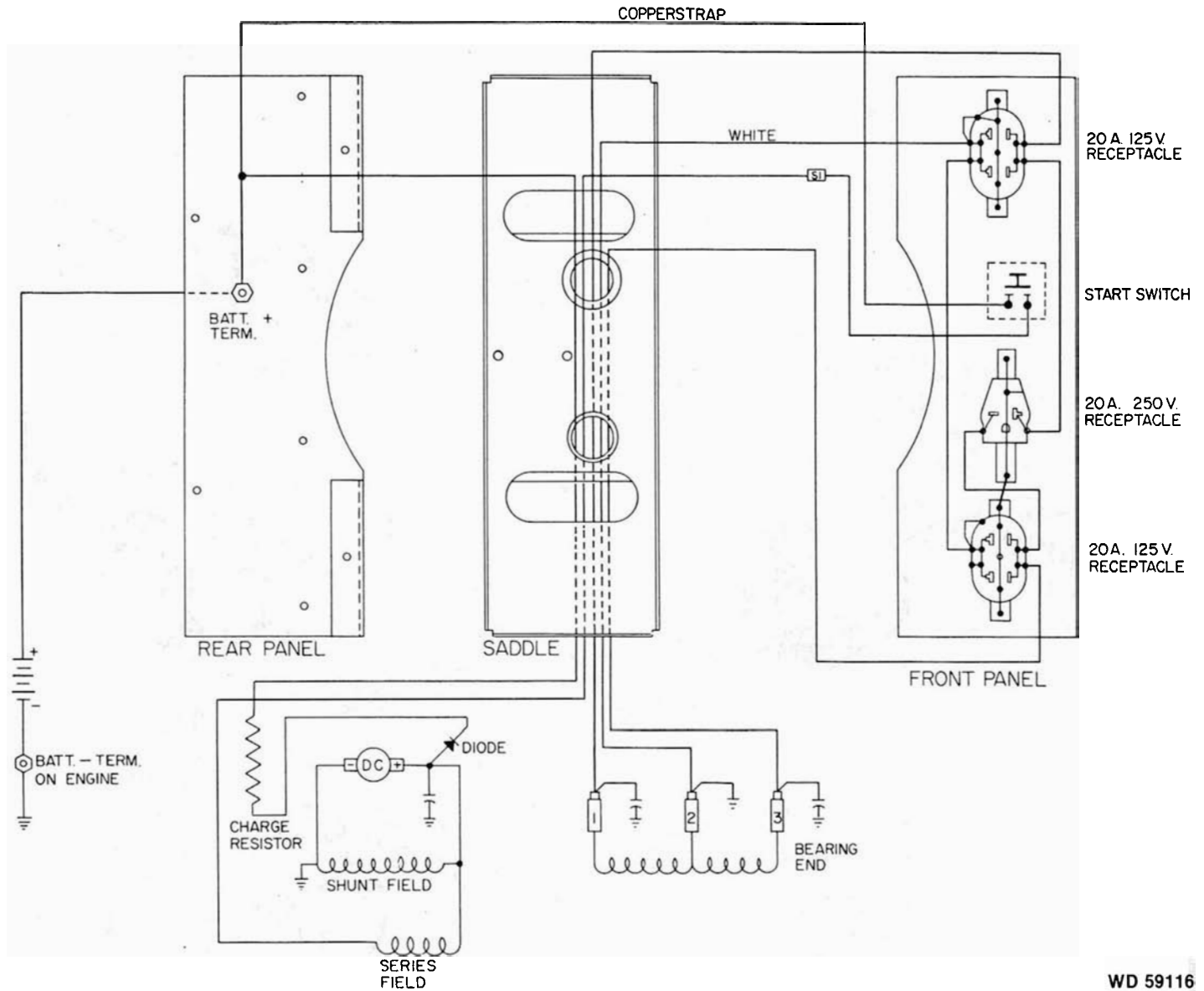
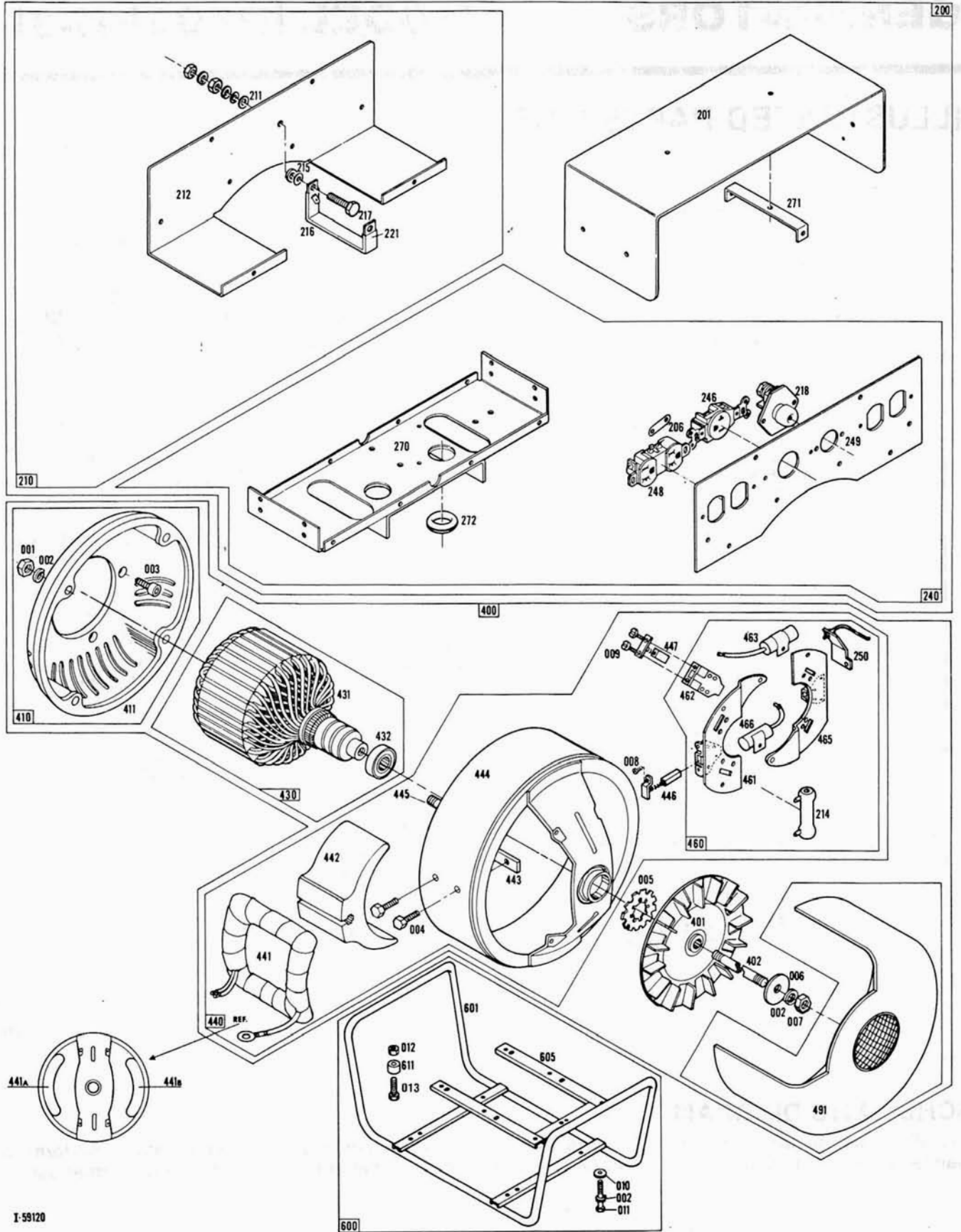


ILLUSTRATED PARTS LIST



SCHEMATIC DIAGRAM

This IPL contains wiring, illustration, parts list, ordering information and technical data to perform routine maintenance on this generator. Consult factory with model no., serial no. and test data for further assistance.



MODEL IP503BH-3E/D

REF. NO.	DESCRIPTION	QTY.	PART NO.	REF. NO.	DESCRIPTION	QTY.	PART NO.
000	Hardware			400	Generator	1	59114
001	Hex Nut 5/16-18	4	458	401	Fan Assembly	1	55101
002	Lockwasher 5/16 Split	4	480	402	Thru Bolt	1	23197-7
003	Screw	4	3290	411	End Bracket	1	54178
004	Cap Screw	4	9416				
005	Lockwasher Int. Tooth	1	55224	430	Armature Assembly	1	55317
006	Flatwasher	1	23558	431	Armature	1	55317-1
007	Hex Nut 5/16-24	1	23605	432	Bearing	1	55223
008	Machine Screw 10-32 x 3/8	3	4637				
009	Machine Screw 8-32 x 5/16	12	40746	440	Field Shell & Coil Assembly	1	55421-2
010	Flatwasher	1	23760	441A	Field Coil	1	55422
011	Cap Screw 5/16-18 x 3/4	1	467	441B	Field Coil	1	55422-1
012	Lock Nut 5/16-18	4	47136	442	Pole Shoe	2	23207
013	Cap Screw 5/16-18 x 2 1/2	4	1720	443	Pole Shoe Retainer	2	23208
				444	Field Shell & Bracket	1	59067
100	Type Drive Engine B & S 252412-0178-01	1	57965	445	Stud	4	23451
				446	D.C. Brush	2	41393
				447	A.C. Brush	6	23607
200	Control Box Assembly	1	59115				
201	Cover	1	59073	460	Brush Rack Assembly	1	55423&-1
206	Ground Strap	3	41387-2				
210	Rear Panel Assembly	1	59119	461	Riveted Brush Plate LH	1	41744
211	Insulation Washer	1	6892	462	A.C. Brush Holder	6	23500
212	Rear Panel (Bare)	1	59118	463	A.C. Capacitor	2	41221
214	Resistor (Battery Charge)	1	41984	465	Riveted Brush Plate RH	1	41744-1
215	Shoulder Washer	1	21981	466	D.C. Capacitor	1	41180
216	Copper Strap	1	52789-11	491	End Cover	1	55007
217	Machine Screw	1	21974				
218	Start Switch	1	2210	600	Cradle Assembly		
221	Insulation Sleeve	1	54041-19	601	Cradle	1	57906
240	Front Panel Assembly	1	59117	605	Subframe	1	57963
246	Receptacle 250V 20A	1	57642	611	Rubber Foot	8	20191
248	Receptacle 125V 20A	2	50766				
249	Front Panel (Bare)	1	59088				
250	Heat Sink & Rectifier	1	54732				
270	Saddle	1	56926				
271	Braces	2	51576				
272	Grommet	1	56927				

PARTS ORDERING INFORMATION REQUIRED



To fill your order for service parts, please advise the complete Generator model number and serial number, part number(s), and part description. If in doubt, consult the factory prior to placing the order. Send all parts orders to WINCO, Division of Dyna Technology, Inc., 225 South Cordova Ave., Le Center, MN 56057.

TECHNICAL DATA

GENERATOR SPECIFICATIONS:

Watts—5300; Volts—115/230; Amps.—23; PH—1; Hz-60; RPM—3600

Nominal Voltage:	No Load:	Full Load:
115 VAC	132 VAC	112 VAC
230 VAC	264 VAC	224 VAC

Resistance:

Field Coils— $2.27 \pm .12$ ohms
Armature—Less than 1 ohm ring to ring

Excitation Voltage: Approximately

28 Volts D.C.

Separately Excited:

12 VDC to Positive Field Lead, 50 to 70 VAC output

NOTE: Remove positive DC brush. Unit will have to be started manually.

BASIC TEST PROCEDURE:

Refer to illustration for component location by Reference Number.

Example: No output—Check field coils for opens or shorts. Reference Numbers 441A and 441B

No Output:

- Check for loose or open connections.
- Check field coils for opens or shorts. Reference Numbers 441A and 441B
- Check brushes for wear, proper seating and not stuck in holder. Reference Numbers 446 and 447
- Check armature for opens or shorts. Reference Number 431

Low Voltage—No Load:

- Check generator speed/frequency (3600 RPM nominal).
- Check for loose or open connections.
- Check winding resistance. Reference Numbers 441A-441B and 431

Low Voltage—Full Load:

- Check generator speed/frequency (3600 RPM nominal).
- Check generator load.
- Check for loose or open connections.
- Check winding resistance. Reference Numbers 441A-441B and 431

SS winding 1173

WINCO[®]

Division of
DYNA TECHNOLOGY, INC.
225 South Cordova
Le Center, MN 56057
Phone (612) 357-6821
Telex 290753