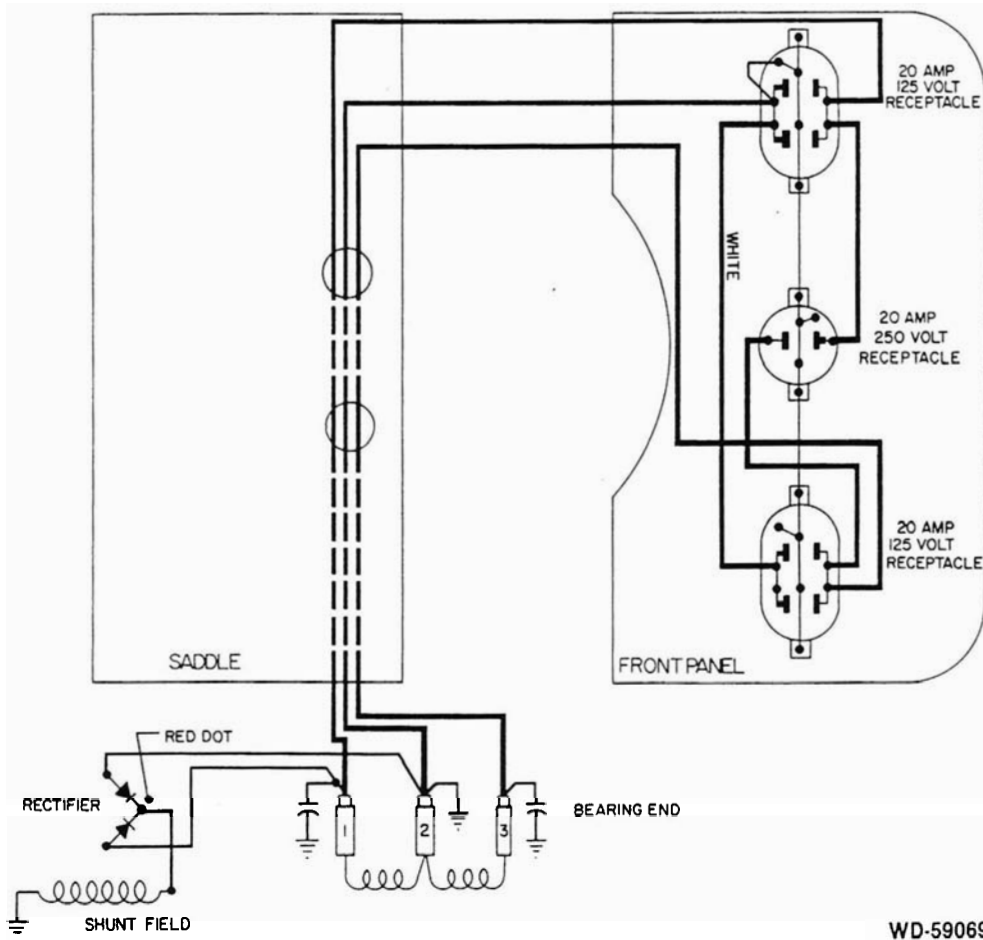


ILLUSTRATED PARTS LIST



IP 4BH 3M/E

SCHEMATIC DIAGRAM

This IPL contains wiring, illustration, parts list, ordering information and technical data to perform routine maintenance on this generator. Consult factory with model no., serial no. and test data for further assistance.

REF. NO.	DESCRIPTION	QTY.	PART NO.	REF. NO.	DESCRIPTION	QTY.	PART NO.
000	Hardware						
001	Hex Nut	4	458	430	Armature Assembly	1	55318
002	Lockwasher Split	5	480	431	Armature	1	55318-1
003	Screw	4	3290	432	Bearing	1	55223
004	Cap Screw	4	9416				
005	Lockwasher Int. Tooth	1	55224	440	Field Shell & Coil Ass'y	1	55416-2
006	Flat Washer	1	23558	441A	Field Coil	1	55361
007	Hex Nut	1	23605	441B	Field Coil	1	55361-1
008	Lockwasher Split	12	480	442	Pole Shoe	2	23207
009	Machine Screw	12	40746	443	Pole Shoe Retainer	2	23208
015	Cap Screw	2	467	444	Field Shell	1	59067
				445	Stud	4	23451
100	Type Drive Engine B & S 190412-1774-01	1	55177	447	Brush	6	23607
				460	Brush Rack Assembly	1	61963
200	Control Panel	1	59068	462	Brush Holder	6	23500
201	Cover	1	59073	463	Capacitor	2	41221
206	Ground Strap	3	41387-2	465	Brush Mounting Plate	1	55107
212	Rear Panel	1	59074	467	Rectifier (Excitation)	1	53976
240	Front Panel Assembly	1	59071				
246	Receptacle 230V	1	57642	491	End Cover	1	55007
248	Receptacle Duplex	2	50766				
249	Front Panel (Bare)	1	59072	600	Cradle Assembly		
270	Saddle	1	56926	601	Cradle	1	58363-1
272	Rubber Grommet	1	56927	602	Flat Bar	1	43292
				603	Formed Bracket	1	43291
400	Generator		59066	604	Shock Mount	4	23623
401	Fan Assembly	1	55101	611	Foot (Not Shown)	3	20191
402	Thru Bolt	1	23197-7				
411	End Bracket	1	54178				

PARTS ORDERING INFORMATION REQUIRED

To fill your order for service parts, please advise the complete Generator model number and serial number, part number(s), and part description. If in doubt, consult the factory prior to placing the order. Send all parts orders to WINCO, Division of Dyna Technology, Inc., 225 South Cordova Ave., Le Center, MN 56057.



TECHNICAL DATA

GENERATOR SPECIFICATIONS:

Watts—4000; Volts—115/230; Amps.—17.4; PH—1; Hz—60; RPM 3600

Nominal Voltage:	No Load	Full Load
115 VAC	132 VAC	112 VAC
230 VAC	264 VAC	224 VAC

Resistance:

Field Coils— $9.5 \pm .5$ ohms

Armature—Less than 1 ohm ring to ring

Excitation Voltage: Approximately

55 Volts A.C.

Separately Excited:

12 VDC to Positive Field Lead (Disconnected from rectifier)

50 to 70 VAC Output

BASIC TEST PROCEDURE:

Refer to illustration for component location by Reference Number.

Example: No output—Check field coils for opens or shorts, Reference Numbers 441A and 441B

No Output:

- Check for loose or open connections.
- Check rectifier, located on Reference Number 465.
- Check field coils for opens or shorts, Reference Numbers 441A and 441B.
- Check brushes for wear, proper seating and not stuck in holder, Reference Number 447.
- Check armature for opens or shorts, Reference Number 431.

Low Voltage—No Load:

- Check generator speed/frequency (3600 RPM nominal).
- Check for loose or open connections.
- Check winding resistance, Reference Numbers 441A-441B and 431.

Low Voltage—Full Load:

- Check generator speed/frequency (3600 RPM nominal).
- Check generator load.
- Check for loose or open connections.
- Check winding resistance, Reference Numbers 441A-441B and 431.

WINGO[®]

Division of
DYNA TECHNOLOGY, INC.
225 South Cordova
Le Center, MN 56057
Phone (612) 357-6821
Telex 290753