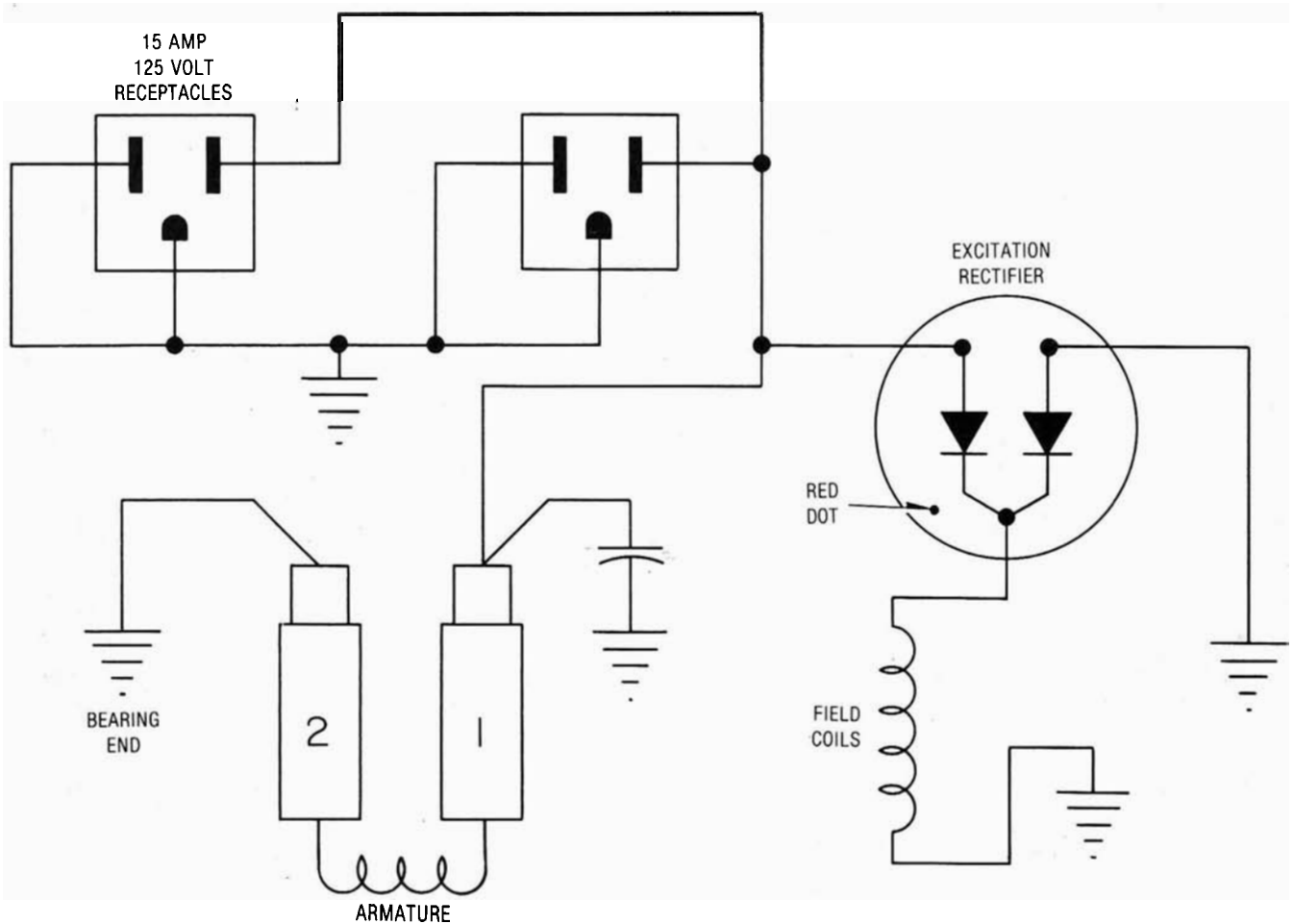


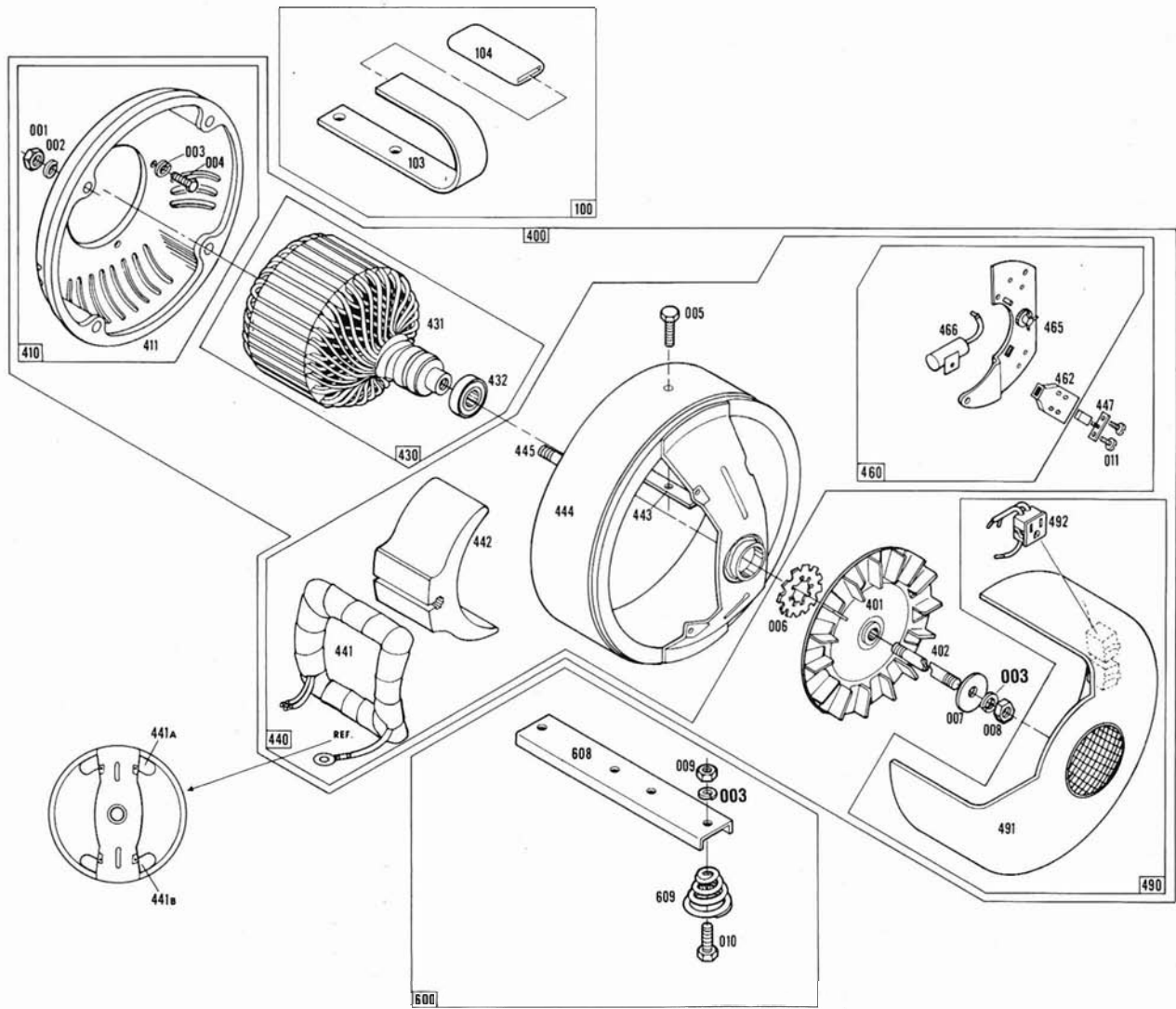
### ILLUSTRATED PARTS LIST



W/D-IP105

### SCHEMATIC DIAGRAM

This IPL contains wiring, illustration, parts list, ordering information and technical data to perform routine maintenance on this generator. Consult factory with model no., serial no. and test data for further assistance.



REF. NO.	DESCRIPTION	QTY.	PART NO.	REF. NO.	DESCRIPTION	QTY.	PART NO.
000	Hardware			431	Armature	1	55090-1
001	Hex Nut 1/4-20	3	638	432	Bearing	1	55223
002	Lockwasher 1/4 Split	3	479				
003	Lockwasher 5/16 Split	11	480	440	Field Shell & Coil Ass'y.	1	55286
004	Cap Screw	4	55576	441A	Field Coil	1	55284
005	Cap Screw 5/8-16 x 1 1/2	2	1743	441B	Field Coil	1	55284-1
006	Lockwasher 5/16 Int. Tooth	1	55224	442	Pole Shoe	2	23804
007	Flat Washer	1	23558	443	Pole Shoe Retainer	2	53629
008	Hex Nut 5/16-24	1	23605	444	Field Shell & Bracket	1	53627
009	Hex Nut 5/16-18	6	458	445	Stud	3	23817
010	Cap Screw 5/16-18 x 1 3/4	4	9416	447	Brush Assembly	4	23607
011	Machine Screw 8-32 x 5/16	8	40746				
				460	Brush Rack Assembly	1	55092
100	Type Drive/Engine Techumseh H-35	1	54411	462	Brush Holder	4	23500
				465	Mounting Plate & Rect.	1	55495
103	Handle	1	53583	466	Capacitor	1	54977
104	Handle Grip	1	57503				
				490	End Cover Assembly	1	55281
400	Generator	1	55285	491	End Cover	1	55304
401	Fan Assembly	1	54967	492	Receptacle	2	53636
402	Thru Bolt	1	23197-4				
411	End Bracket	1	55093	600	Base Assembly		
				608	Base Channel	2	55094
430	Armature Assembly	1	55090	609	Shock Spring	4	55096

**PARTS ORDERING INFORMATION REQUIRED**

To fill your order for service parts, please advise the complete Generator model number and serial number, part number(s), and part description. If in doubt, consult the factory prior to placing the order. Send all parts orders to WINCO, Division of Dyna Technology, Inc., 225 South Cordova Ave., Le Center, MN 56057.



# TECHNICAL DATA

## GENERATOR SPECIFICATIONS:

Watts—1500; Volts-115; Amps.-13; PH-1; Hz-60; RPM-3600

<b>Nominal Voltage:</b> 115 Volts A.C.	<b>No Load:</b> 132 Volts A.C.	<b>Full Load:</b> 112 Volts A.C.
---	-----------------------------------	-------------------------------------

## Resistance:

Field Coils— $10.5 \pm .75$  ohms  
Armature—Less than 1 ohm ring to ring

**Excitation Voltage: Approximately 55 Volts D.C.**

## Separately Excited:

12 VDC to the Positive Field Lead (Disconnected from rectifier)  
50 to 70 VAC Output

## BASIC TEST PROCEDURE:

Refer to illustration for component location by Reference Number.

Example: No output—Check field coils for opens or shorts.

Reference Number 441A and 441B.

## No Output:

- Check for loose or open connections.
- Check rectifier, located on Reference Number 465.
- Check field coils for opens or shorts Reference Number 441A and 441B.
- Check brushes for wear, proper seating, and not stuck in holder, Reference Number 447.
- Check armature for opens or shorts, Reference Number 431.

## Low Voltage—No Load:

- Check generator speed/frequency. (3600 RPM nominal)
- Check for loose or open connections.
- Check winding resistance, Reference Numbers 441A-441B, and 431.

## Low Voltage-Full Load:

- Check Generator speed/frequency. (3600 RPM nominal)
- Check generator load.
- Check for loose or open connections.
- Check winding resistance, Reference Numbers 441A-441B, and 431.

**WINCO**<sup>®</sup>

Division of  
**DYNA TECHNOLOGY, INC.**  
225 South Cordova  
Le Center, MN 56057  
Phone (612) 357-6821  
Telex 290753