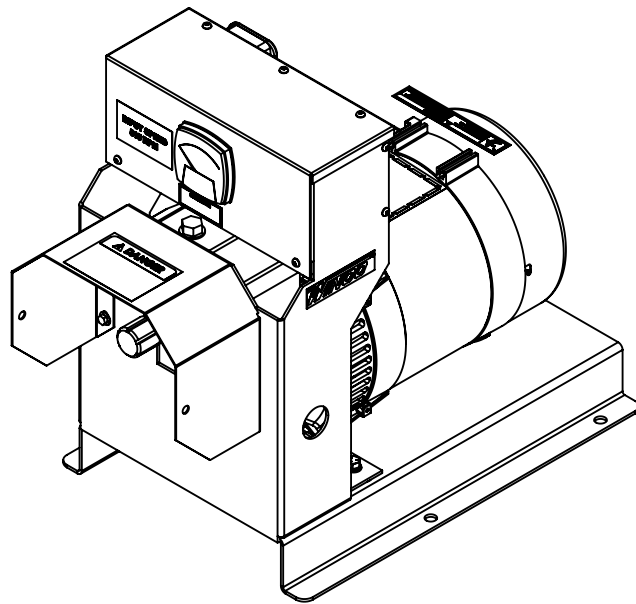


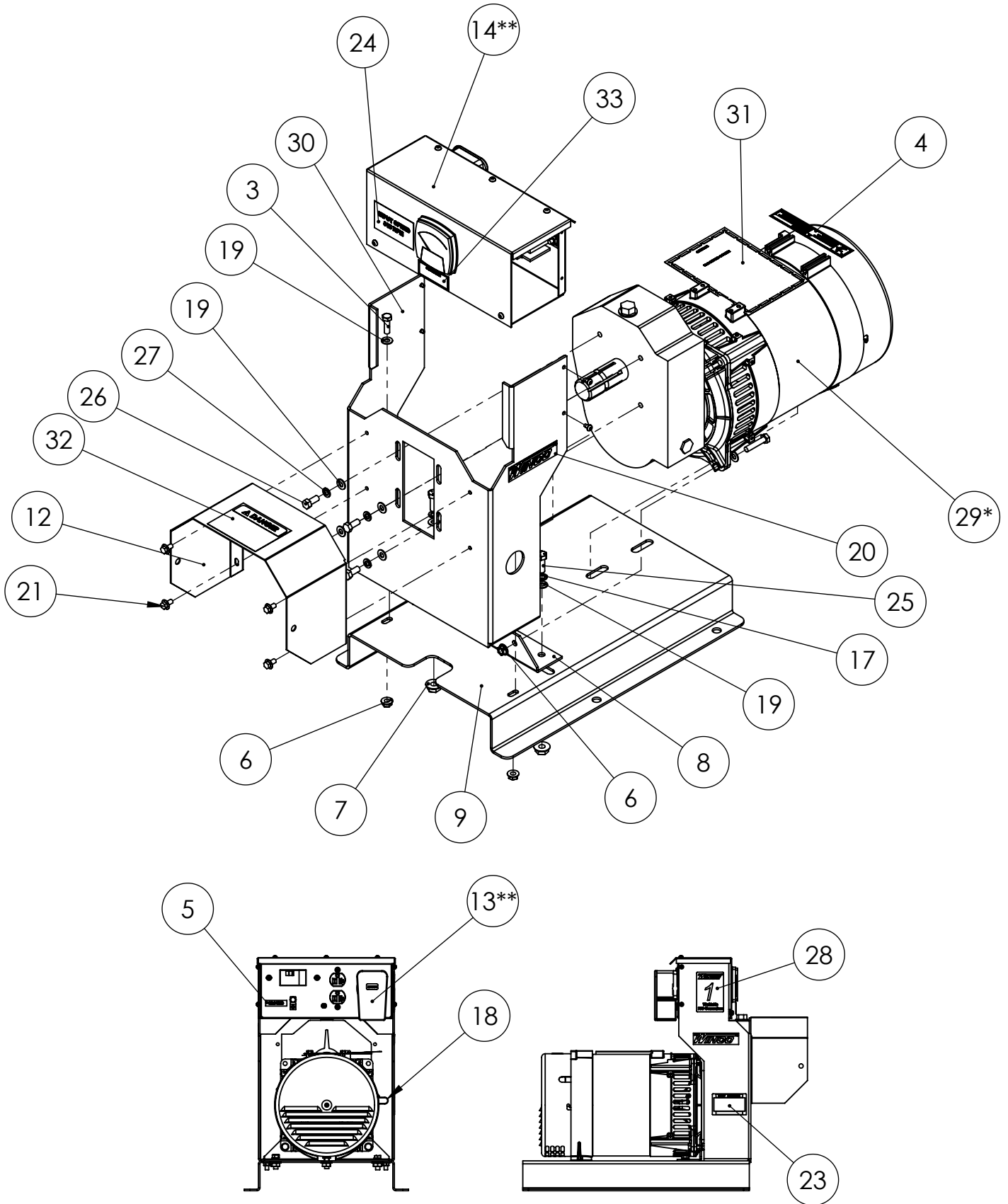
W10PTOS-3/A

W15PTOS-3/F



WINCO Service
Phone: 507-357-6831
Email: service@wincogen.com
www.wincogen.com

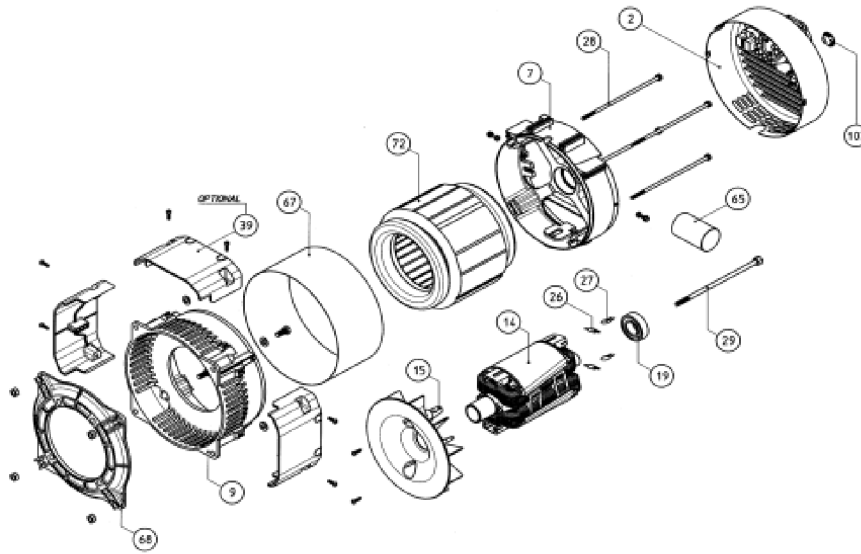
ASSEMBLY PARTS LIST



GENERAL ASSEMBLY PARTS LIST

ITEM NO.	PART NUMBER	DESCRIPTION	QTY.
1	100047-603	31.875 X 24.25 X 22 CARTON	1
2	100047-747	10 X 8 X 6 CARTON	1
3	1116-000	HHCS .3125-18X1	2
4	15209-003	UL-DECAL ELECTRICAL SHOCK CAN KILL	1
5	15750-001	GROUND DECAL	1
6	16249-000	.3125-18 FLANGE	4
7	16250-000	.375-16 FLANGE NUT	3
8	16335-015	GENERATOR SUPPORT	1
9	16406-007	FORMED BASE	1
10*	16428-002	GEN END, 15KW, 1PH, 120/240V (W15PTO-3/F)	1
11	21698-001	TORX PAN HEAD SCREW #10	4
12	300086-2	GUARD, DRIVE SHAFT	1
13	300137	PLUG, NEMA 14-60P, 60A-3P-4W-125/250V	1
14**	300160-7	RECEPTACLE BOX ASSEMBLY (W10PTO-3/A)	1
15**	300160-8	RECEPTACLE BOX ASSEMBLY (W15PTO-3/F)	1
16	468-000	.3125-18X1.5 HHCS	2
17	481-000	LOCK .375 SPLIT	3
18	49975-012	CABLE TIE 14" BLACK 50# PULL	1
19	526-000	WASHER .3125 ID	11
20	53113-002	WINCO DECAL	2
21	55440-000	.25-02X.5 SELF TAP	4
22	60706-241	OPERATORS MANUAL	1
23	63966-009	KIT, NAMEPLATE WINCO PTO	1
24	91369-003	UL-DECAL-515 RPM	1
25	91658-001	HHCS 3/8-16X1	3
26	96002-020	M8-1.25X20MM	4
27	97436-008	.325IN LOCKWASHER	4
28	98479-000	WINCO #1 WORLDWIDE DECAL	1
29*	99839-002	GEN END, 10.2 KW, W/GEARCASE (W10PTO-3/A)	1
30	99841-003	GEAR CASE SUPPORT	1
31	Z2553	DECAL-OPERATOR INSTRUCTIONS	1
32	Z2568	DECAL-DANGER PTO	1
33	Z9941	DECAL-OIL FILL HOLE	1
34	100114-748	10PTO 15PTO SKID	1
35	15715-100	DECAL KIT, PACKAGING, PTO/EC STYLE, STACK 2	2

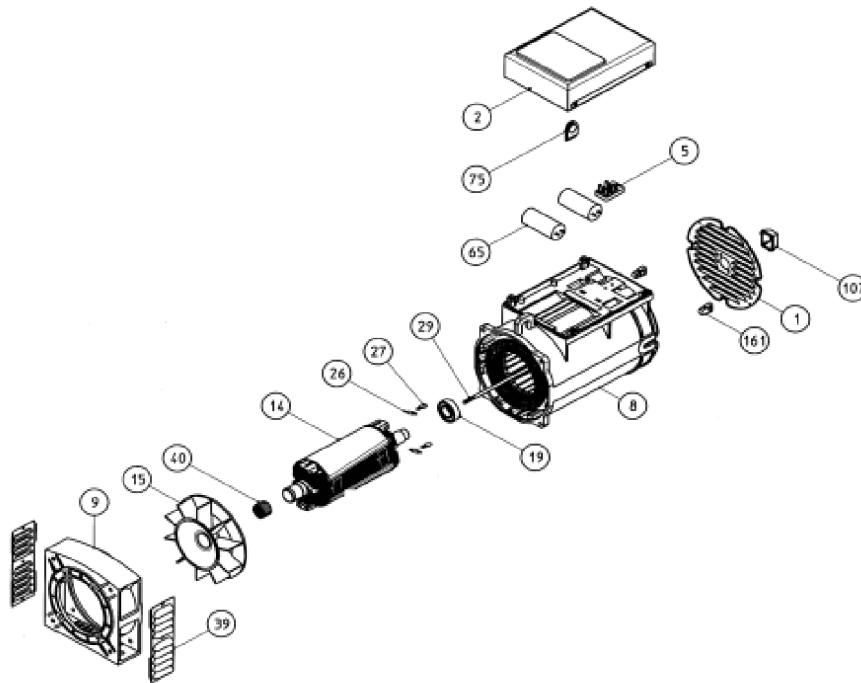
GENERATOR INFORMATION



ITEM	DESCRIPTION	PART NUMBER
-	COMPLETE GENERATOR END	16248-004
19	REAR BEARING	16346-032
26	DIODE SCD	300323-207
27	VARISTOR	16346-106
65	CAPACITOR	16346-412
	END PLUG	9-100
	LOAD PLUG	-
-	LOAD PINS	-
For additional parts support, contact WINCO service.		

EXPECTED RESISTANCE (Ω) @ 22C	
MODEL	S20W-130
STATOR WINDING (PER PHASE SERIES CONNECTED)	0.145
ROTOR WINDING	5.67
EXCITER STATOR	1.31

GENERATOR INFORMATION



ITEM	DESCRIPTION	PART NUMBER
-	COMPLETE GENERATOR END	16249-002
19	REAR BEARING	16346-032
26	DIODE SCD	300323-207
27	VARISTOR	16346-106
65	CAPACITOR	16346-412
	END PLUG	9-100
	LOAD PLUG	-
-	LOAD PINS	-

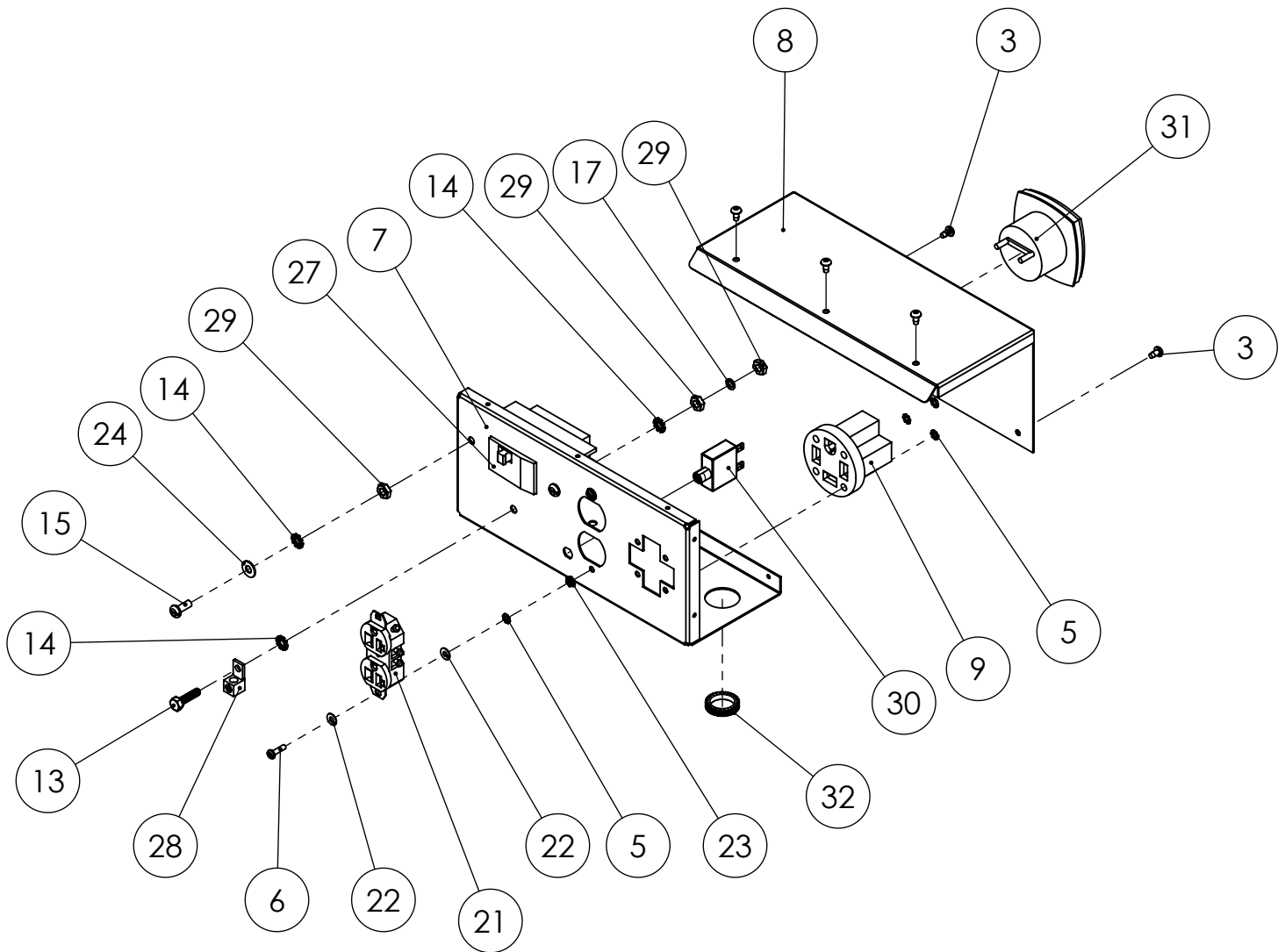


EXPECTED RESISTANCE (Ω) @ 22C	
MODEL	S20F-230
STATOR WINDING (PER PHASE SERIES CONNECTED)	0.056
ROTOR WINDING	8.04
EXCITER STATOR	0.41

For additional parts support, contact WINCO service.

RECEPTACLE ASSEMBLY

*FOR MODEL W10PTOS-3/A ONLY

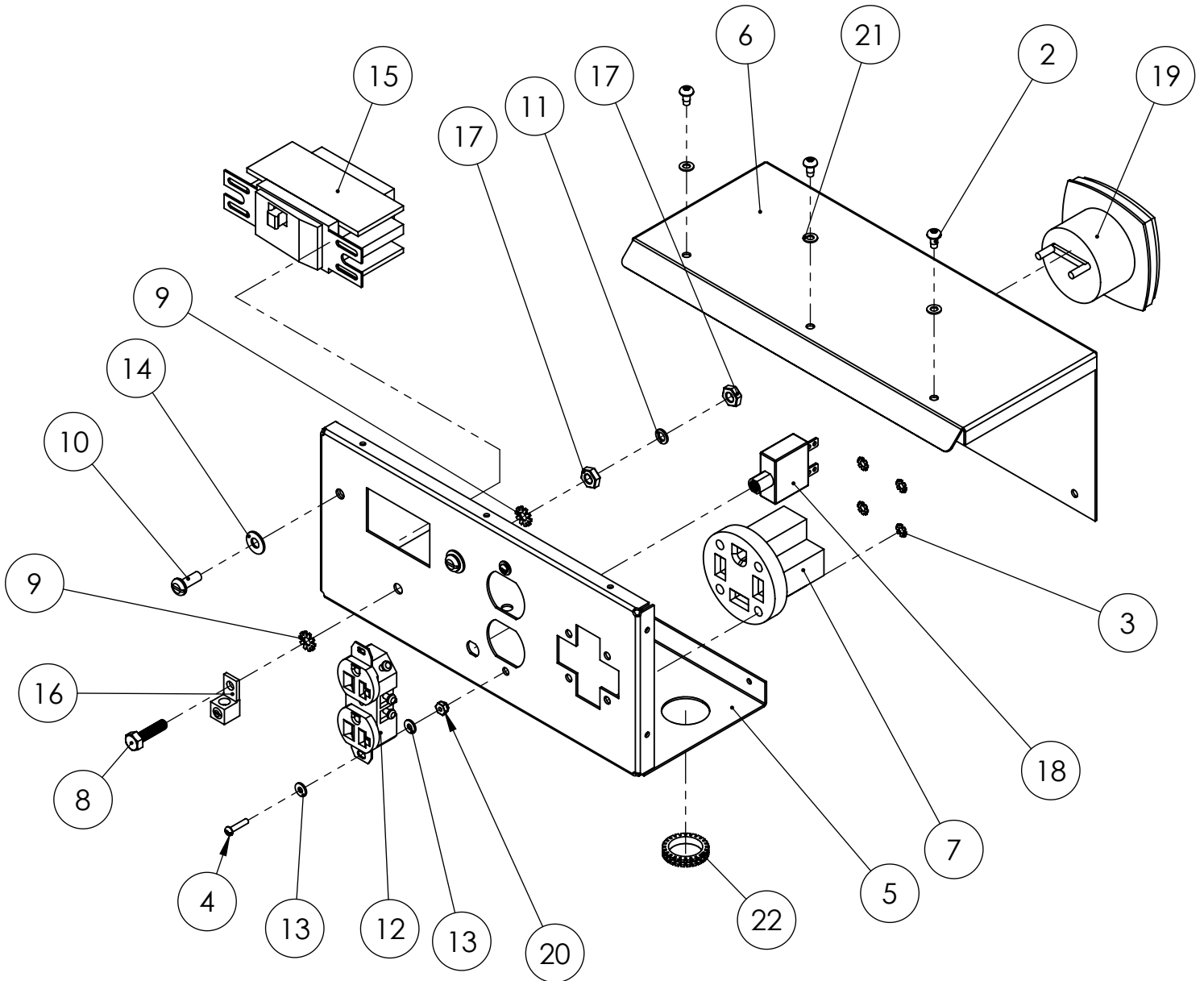


RECEPTACLE ASSEMBLY

ITEM NO.	PART NUMBER	DESCRIPTION	QTY.
1	16346-010	4-POSITION PLUG	1
2	16346-011	TERMINAL LUG	4
3	21698-001	TORX PAN HEAD SCREW #10	5
4	21850-002	TERMINAL HOOK 16-14 AWG #10STUD	3
5	21976-000	#8 LOCKWASHER EXTERNAL TOOTH	6
6	24198-000	BHMS #8-32 X 5/8	2
7	300079-5	CONTROL BOX	1
8	300080-3	TOP COVER	1
9	300136	NEMA 14-60R	1
10	4155-000	TERMINAL, RING, 12-10AWG, 5-16" STUD	6
11	4156-000	TERMINAL RING 12-10 #10 STUD	1
12	4160-000	TERMINAL, RING, 16-14AWG, 1/4 STUD	2
13	439-000	HHCS 1/4-20X1 GR2	1
14	4516-000	LOCKWASHER 1/4 EXTERNAL TOOTH	4
15	45633-000	RHMS 1/4-20X 5/8	2
16	463-000	HEX BOLT .25-20X.50	2
17	479-000	LOCK WASHER, .25" SPLIT	1
18	48602-001	TERMINAL FEMALE 16/14AWG .250	2
19	49975-001	CABLE TIE 7IN BLACK 50# PULL	1
20	49975-011	CABLE TIE 7" BLACK 50# PULL	2
21	50766-000	NEMA 5-20R DUPLEX RECEPTACLE	1
22	511-000	#8 FLATWASHER	4
23	5113-000	NUT HEX # 8	2
24	512-000	.25 WASHER	2
25	51319-000	TERMINAL SPLICE CAP COPPER	1
26	51320-000	CLOSED INSULATOR CAP	1
27	57030-007	CIR.BRK. 45A-2PL-240V	1
28	63708-000	TERMINAL LUG	1
29	638-000	HEX NUT, .25IN	4
30	91286-001	CIRCUIT BREAKER, 20A, 1 PL	1
31	91370-000	VOLTMETER, 0-300VAC 240V APP.	1
32	99280-001	CONTINUOUS GROMMET	1

RECEPTACLE ASSEMBLY

*FOR MODEL W15PTOS-3/F ONLY

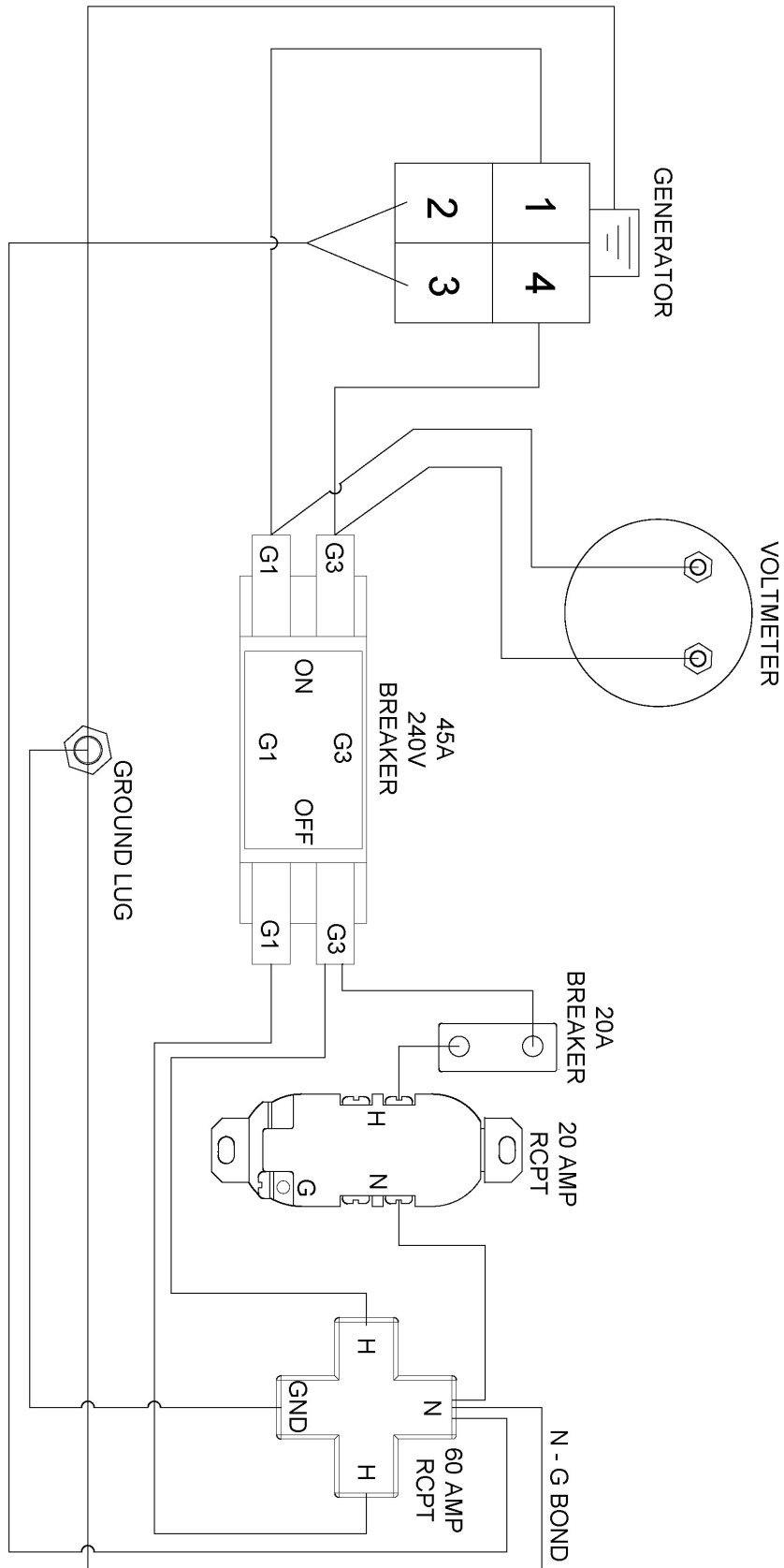


RECEPTACLE ASSEMBLY

ITEM NO.	PART NUMBER	DESCRIPTION	QTY.
1	16248-000	.25-20 FLANGE	2
2	21698-001	TORX PAN HEAD SCREW #10	3
3	21976-000	#8 LOCKWASHER EXTERNAL TOOTH	4
4	7792-000	RHMS 6-32 X .625	2
5	300079-5	CONTROL BOX	1
6	300080-3	TOP COVER	1
7	300136	NEMA 14-60R	1
8	439-000	HHCS 1/4-20X1 GR2	1
9	4516-000	LOCKWASHER 1/4 EXTERNAL TOOTH	2
10	45633-000	RHMS 1/4-20X 5/8	2
11	479-000	LOCK WASHER, .25" SPLIT	1
12	50766-000	NEMA 5-20R DUPLEX RECEPTACLE	1
13	425-000	#6 FLATWASHER	4
14	512-000	.25 WASHER	2
15	57030-005	CIR. BRK. 60A-2PL-240V	1
16	63708-000	TERMINAL LUG	1
17	638-000	HEX NUT, .25IN	2
18	91286-001	CIRCUIT BREAKER, 20A, 1 PL	1
19	91370-000	VOLTMETER, 0-300VAC 240V APP.	1
20	51802-000	NUT HEX #6-32 NYLOCK	2
21	96286-002	FLAT WASHER NYLON	3
22	99280-001	CONTINUOUS GROMMET	1

WIRING DIAGRAM

W10PTOS - BACK VIEW



WIRING DIAGRAM

W15PTOS - BACK VIEW

