



**ILLUSTRATED
PARTS LIST**

PSS75LS-3/A, B, C

PSS75LS-4/A, B, C

PSS75LS-17/A, B, C

PSS75LS-18/A, B, C

2005 - 2007

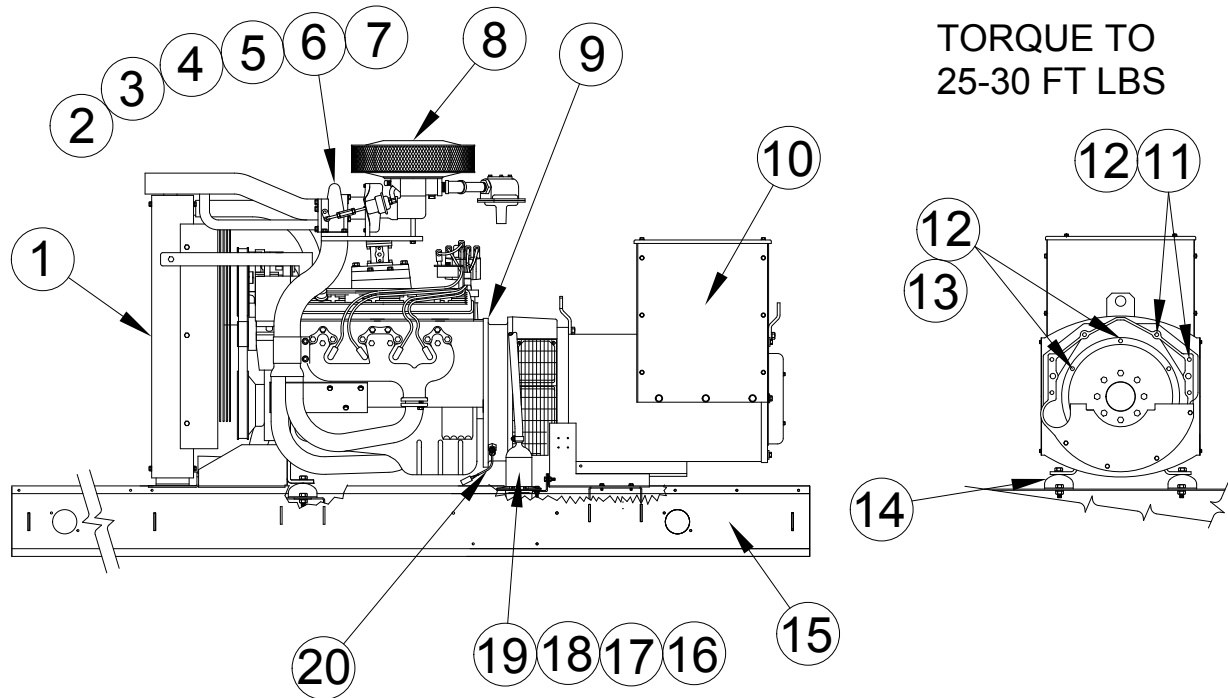
WITH BASLER

DGC-500 ENGINE

CONTROL

WINCO INC.
225 S. CORDOVA AVE.
LE CENTER, MN 56057
(507) 357-6821
SERVICE DEPT.
(507) 357-6831
wincogen.com

ENGINE / GENERATOR BASE ASSEMBLY



TORQUE TO
25-30 FT LBS

REF #	PART NUMBER	QTY	DESCRIPTION
1	Reference	1*	Radiator
2	99914-003	1	Engine Intake Tube
3	81018-002	6	Hose Clamp
4	95679-002	2	T-Bolt Clamp
5	99915-000	3-3/4"	1.5 ID Hose
6	99914-002	1	Engine Intake Tube
7	99916-000	5-5/8"	2.0 ID Hose
8	F1-9	1	Impco Air Filter
9	SEE TABLE	1	Engine, GM 5.7L Turbo
10	SEE TABLE	1	Generator, Stamford Newage
11	96000-004	6	3/8 - 16 X 1-1/2" Bolt
12	481-001	12	Split Lock Washer
13	96000-005	6	3/8 - 16 X 2" Bolt
14	98956-001	4	Shock Mount
15	99381-017	1	Welded Base Assembly
16	80781-003	1	1000W 120V Heater
17	350341	1	Adapter
18	93689-001	7 FT	Heater Hose
19	81018-005	4	Hose Clamp
20	350101-1	1	Magnetic Pick-up

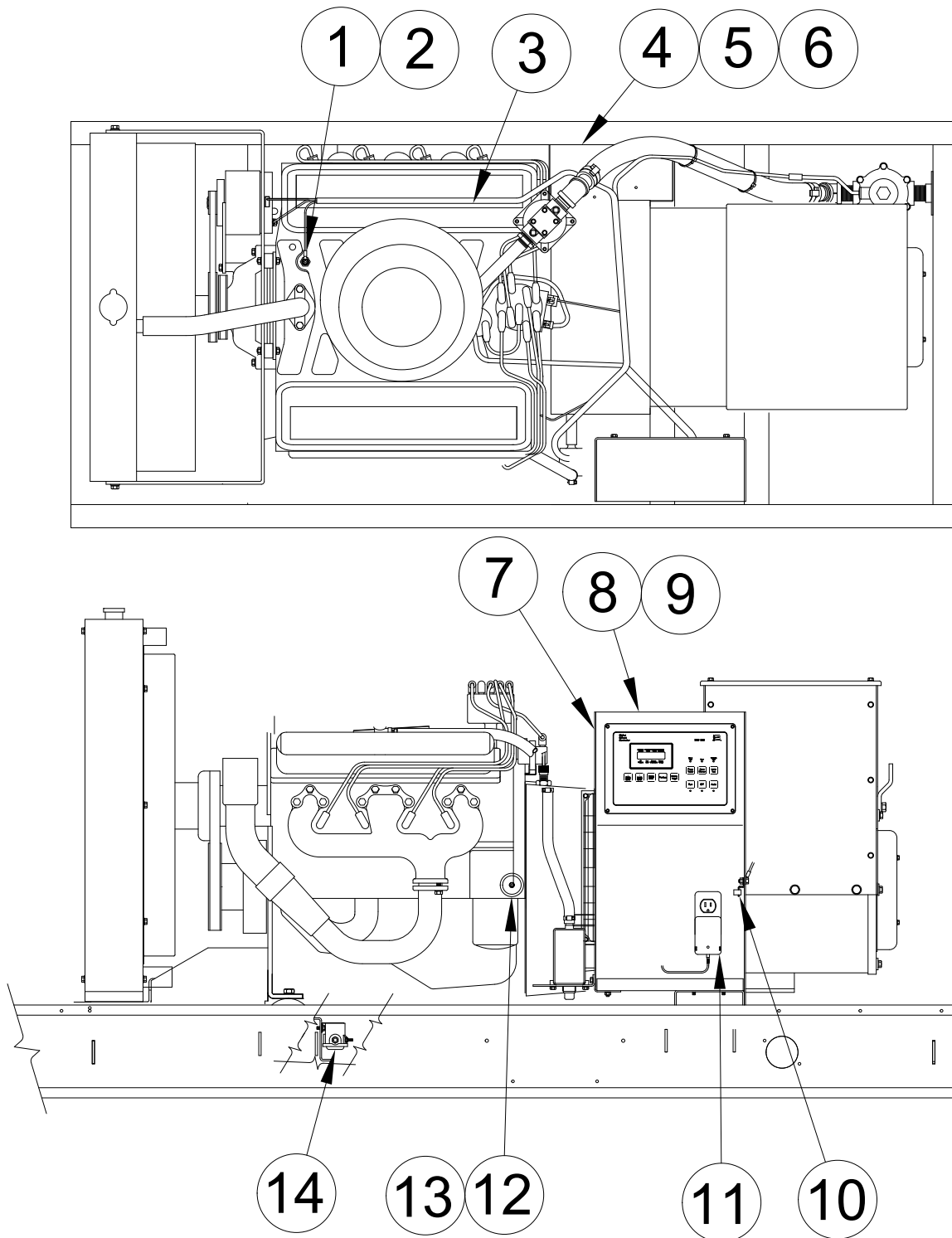
ENGINE / GENERATOR BASE ASSEMBLY

REF #	PART NUMBER	QTY	DESCRIPTION
NI	99347-008	1	AC Wiring Harness
NI	99420-008	1	Engine Control Harness
NI	93542-016	1	Lead Wire Assembly
NI	93542-010	1	Lead Wire Assembly
NI	PF-35	1	AC Delco Oil Filter
NI	41-932	8	AC Delco Spark Plug
NI	72036-015	1	Battery Charger
NI	Not Illustrated		
*	Provided by GM		

MODEL	ENGINE PART NUMBER
PSS75LS-3/ANG	350775-20
PSS75LS-3/ALP	350775-21
PSS75LS-3/ALPG	350775-22

STAMFORD NEWAGE MODEL #	UCI224G 4-LEAD	UCI224G 12-LEAD
WINCO PART #	350685-51	350685-5
WINCO MODEL #'S	PSS75LS-3/ANG PSS75LS-3/ALP PSS75LS-3/ALPG	PSS75LS-4/ANG PSS75LS-17/ANG PSS75LS-18/ANG PSS75LS-4/ALP PSS75LS-17/ALP PSS75LS-18/ALP PSS75LS-4/ALPG PSS75LS-17/ALPG PSS75LS-18/ALPG

ELECTRICAL SYSTEM ASSEMBLY



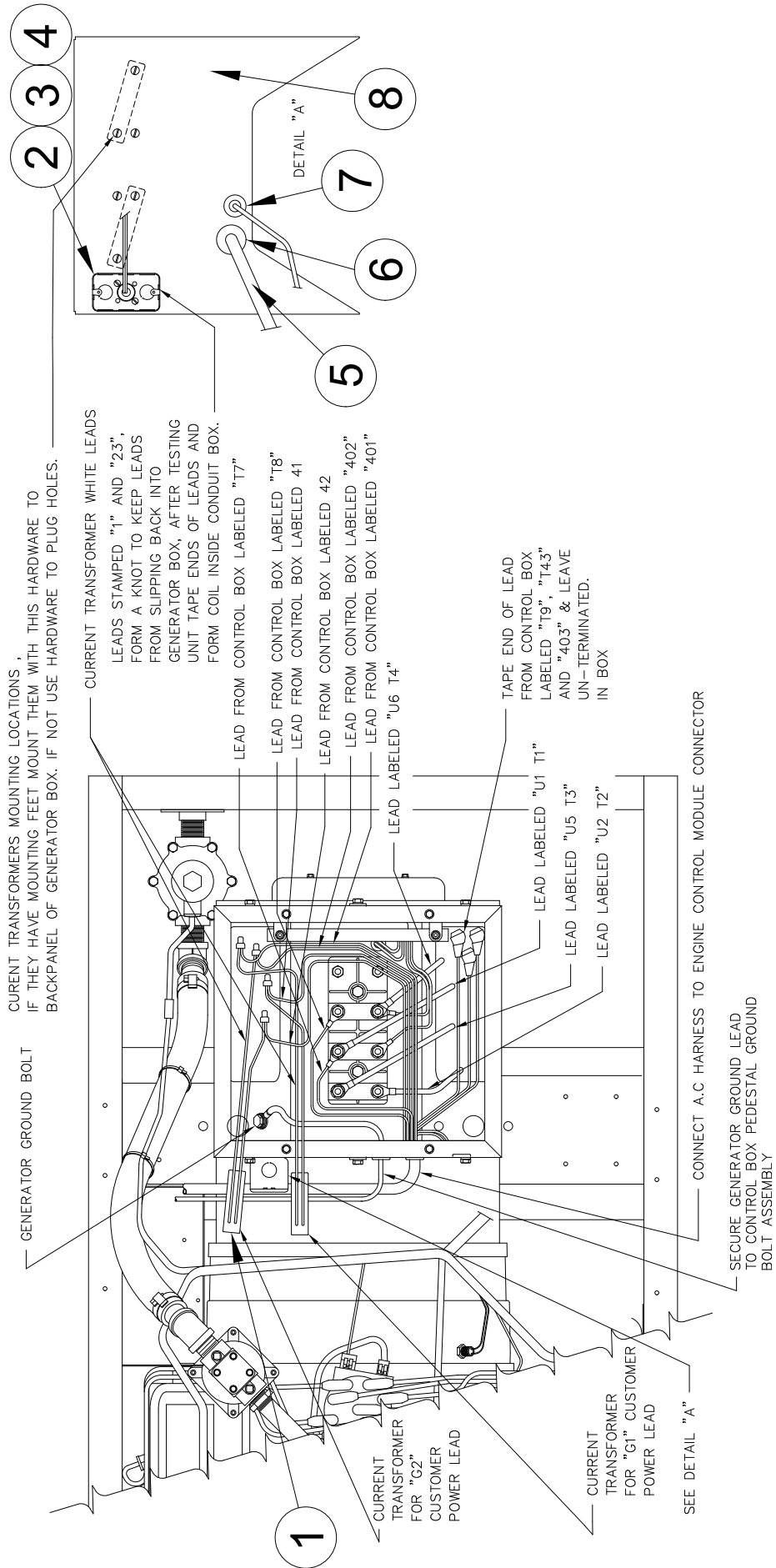
REF #	PART NUMBER	QTY	DESCRIPTION
1	99265-001	1	Temperature Sender
2	56372-000	1	3/8" to 1/2" Reducer
3	99420-008	1	Engine Control Harness
4	99317-001	1	Battery Tray
5	53220-058	1	Positive (+) Battery Cable
6	53220-013	1	Negative (-) Battery Cable
7	44058-014	1	Hole Plug
8	99057-008	1	Support Pedestal /A
8	99057-011	1	Support Pedestal /B, /C
9	99055-004	1	Access Plate
10	48042-000	1	Ground Lug
11	Reference	1	Battery Charger Assembly
12	99267-001	1	Oil Pressure Sender
13	80951-000	1	1/8" to 1/4" Reducer
14	80980-000	1	Start Control Solenoid

AC WIRING ASSEMBLY

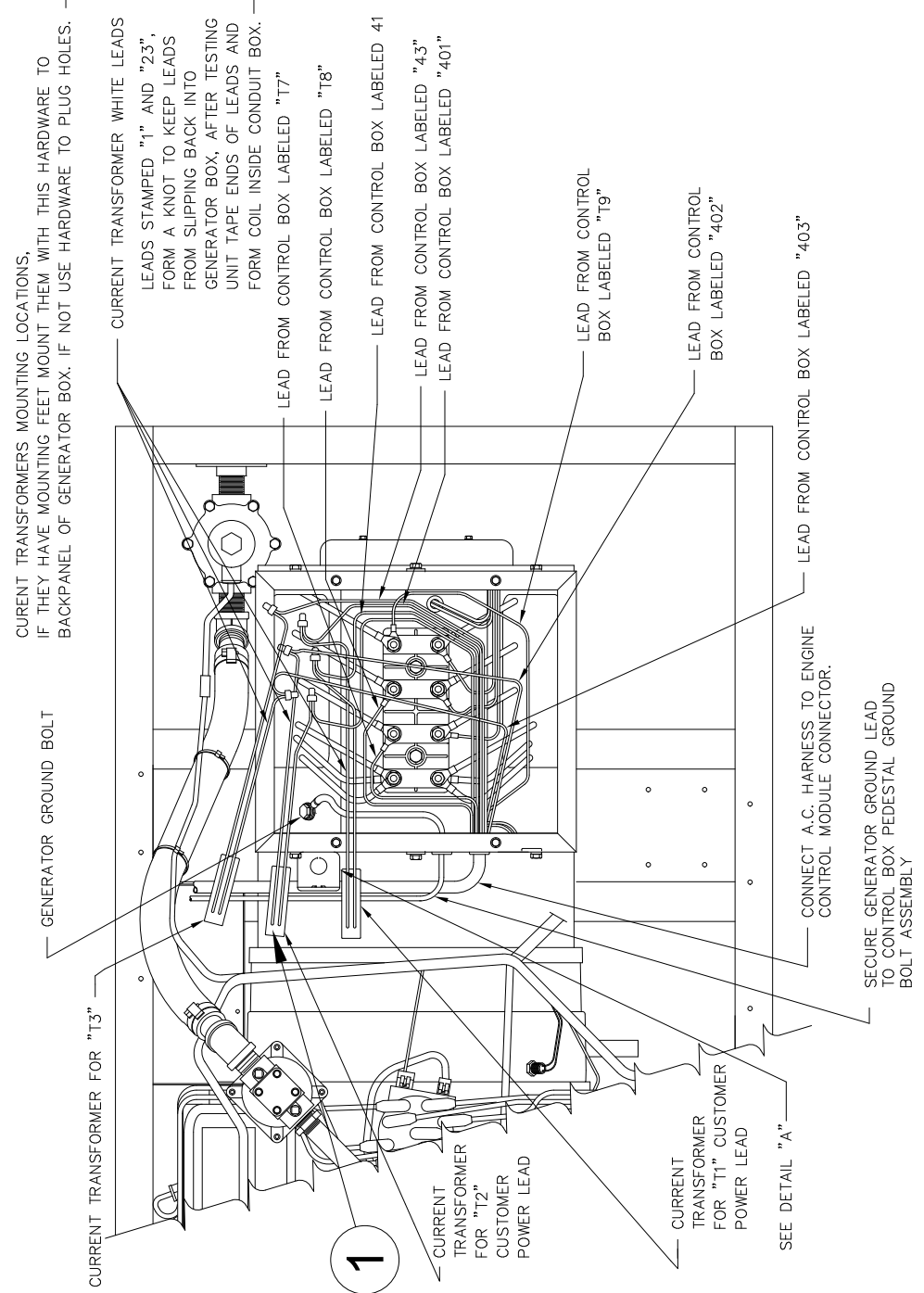
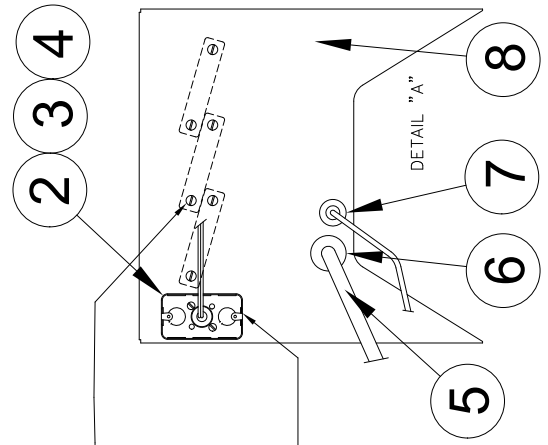
REF #	PART NUMBER	QTY	DESCRIPTION
1	SEE TABLE	2 or 3	Current Transformer
2	92789-000	1	Conduit Box
3	59026-000	1	Conduit Box Cover
4	40730-000	1	Grommet
5	350028-36	1	Rear Panel
6	23917-000	1	Grommet
7	62480-000	1	Grommet
8	99347-008	1	AC Harness
NI	350818	1	SX 460 Voltage Regulator
NI	Not Illustrated		

MODEL #	PART NUMBER	DESCRIPTION	QTY
PSS75LS-3/A	80124-007	400:5 CURRENT TRANSFORMER	2
PSS75LS-4/A PSS75LS-17/A	80124-006	300:5 CURRENT TRANSFORMER	3
PSS75LS-18/A	80124-003	100:5 CURRENT TRANSFORMER	3

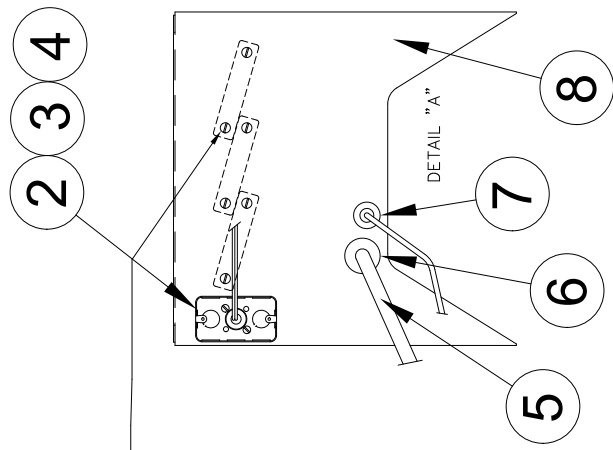
AC WIRING ASSEMBLY PSS75LS-3/A



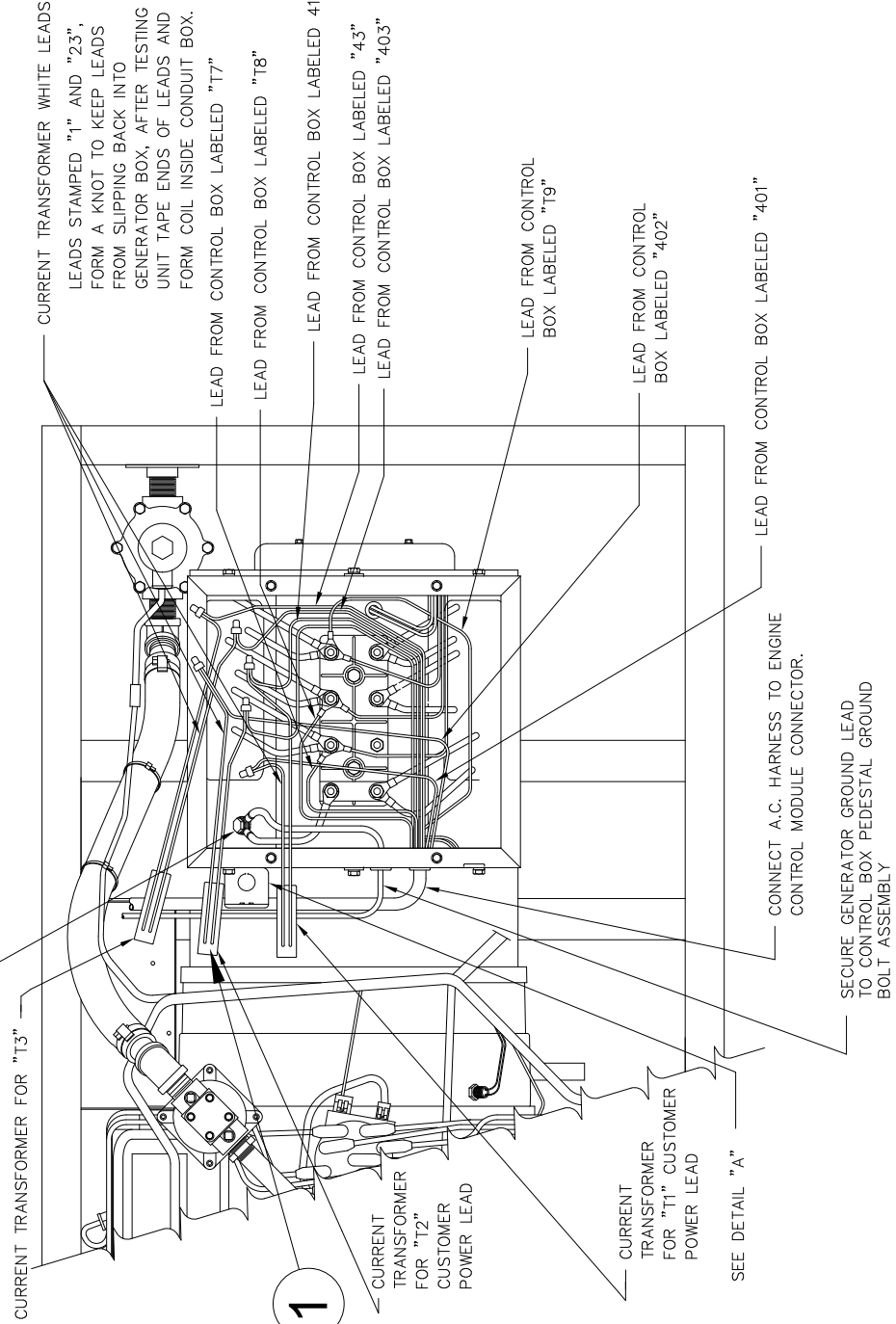
AC WIRING ASSEMBLY PSS75LS-4/A



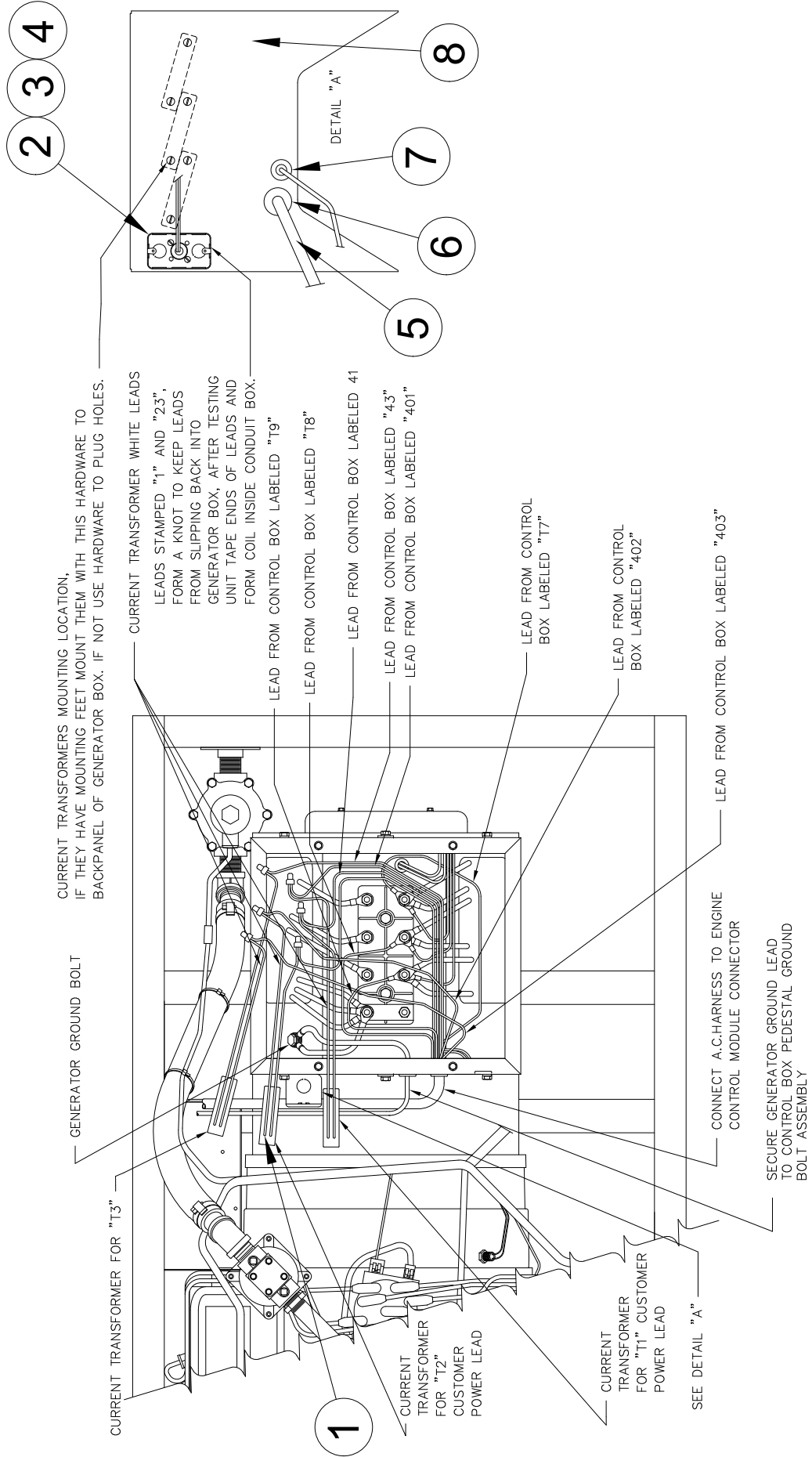
AC WIRING ASSEMBLY PSS75LS-17/A



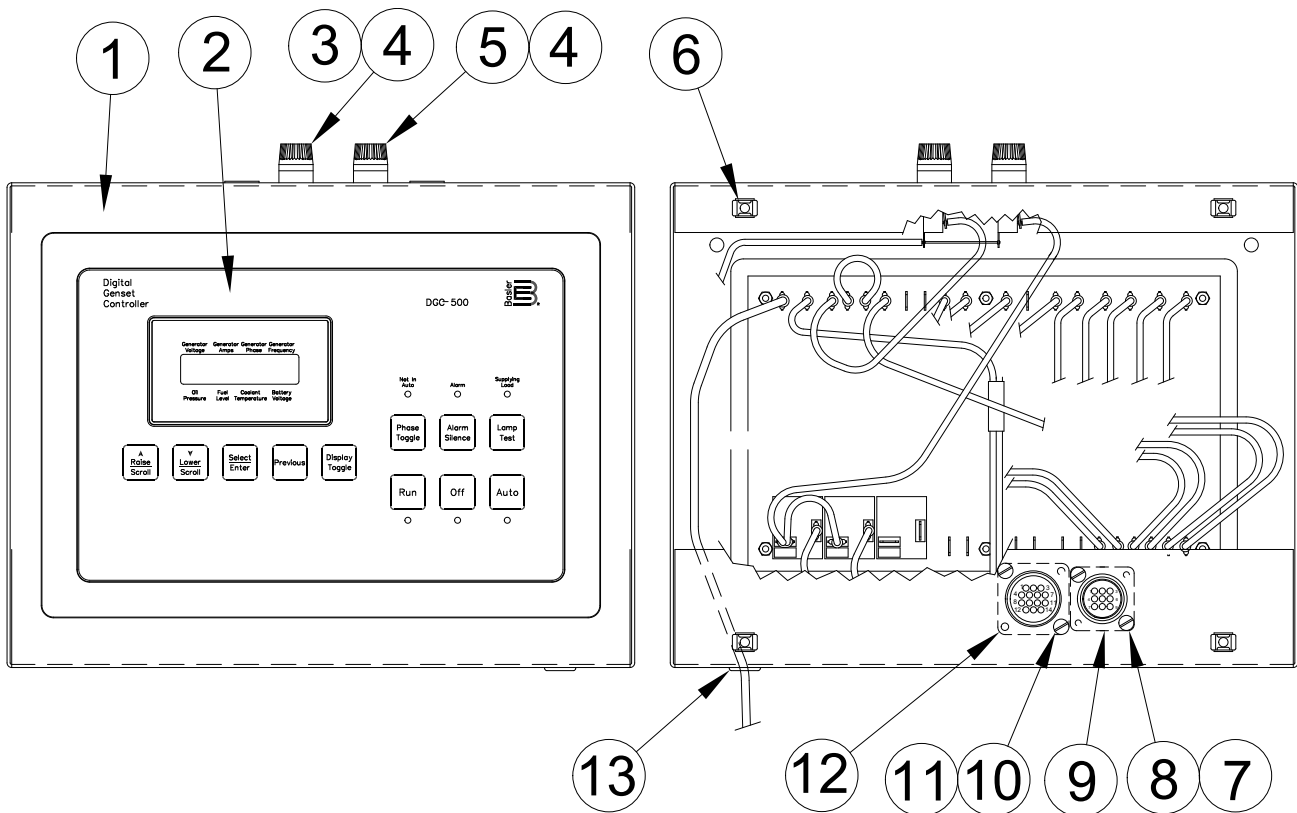
CURRENT TRANSFORMERS MOUNTING LOCATIONS.
IF THEY HAVE MOUNTING FEET MOUNT THEM WITH THIS HARDWARE TO
BACKPANEL OF GENERATOR BOX. IF NOT USE HARDWARE TO PLUG HOLES.



AC WIRING ASSEMBLY PSS75LS-18/A

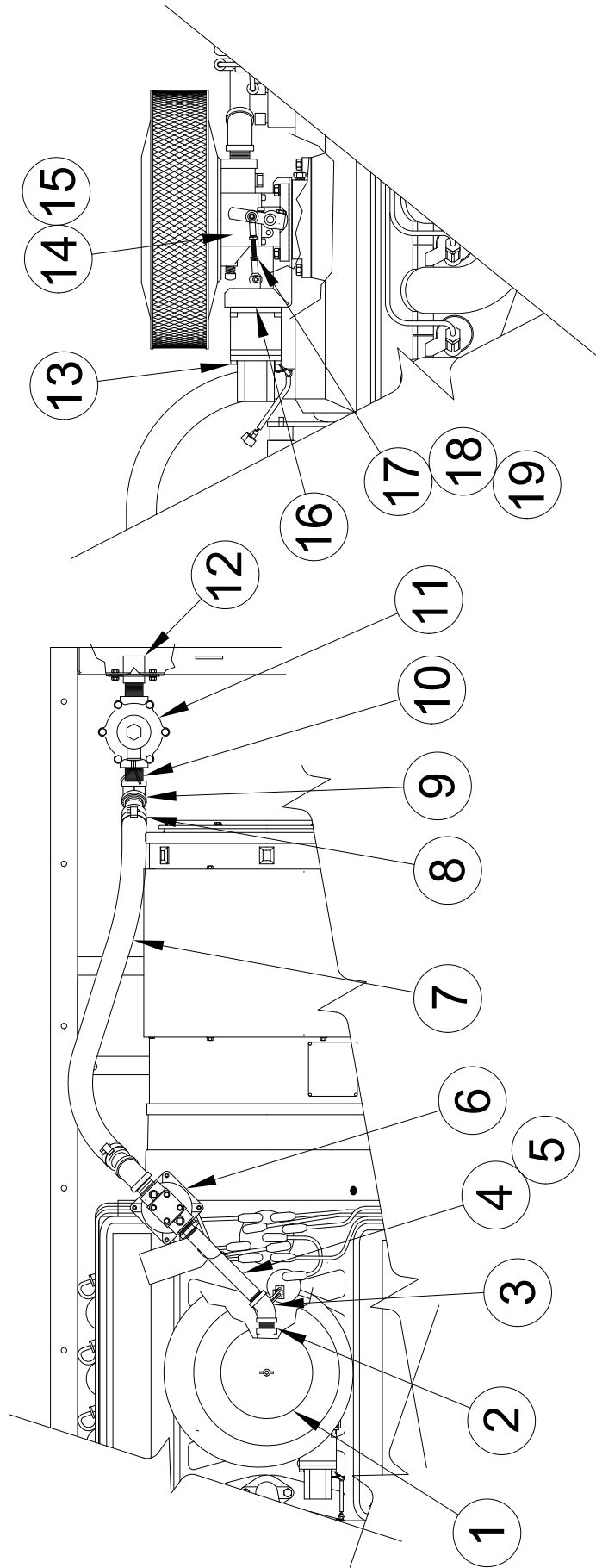


ENGINE CONTROL ASSEMBLY



REF #	PART NUMBER	QTY	DESCRIPTION
1	99055-003	1	Control Box Panel
2	351147-2	1	Basler DGC-500 Control
3	95064-006	1	10 Amp Fuse
4	2489-001	2	Fuse Holder
5	95064-003	1	1 Amp Fuse
6	92495-000	4	1/4-20 Retainer Nut
7	97322-000	2	#4-40 X 1/2" Screw
8	97327-000	2	#4-40 Elastic Stop-nut
9	96925-005	1	9 Pin Connector
10	24988-000	2	#6-32 X 1/2" Screw
11	51802-000	2	#6-32 Elastic Stop-nut
12	96925-002	1	14 Pin Connector
13	45853-000	1	Grommet
NI	15983-003	1	1 Amp Fuse Decal
NI	15983-004	1	10 Amp Fuse Decal
NI	Not Illustrated		

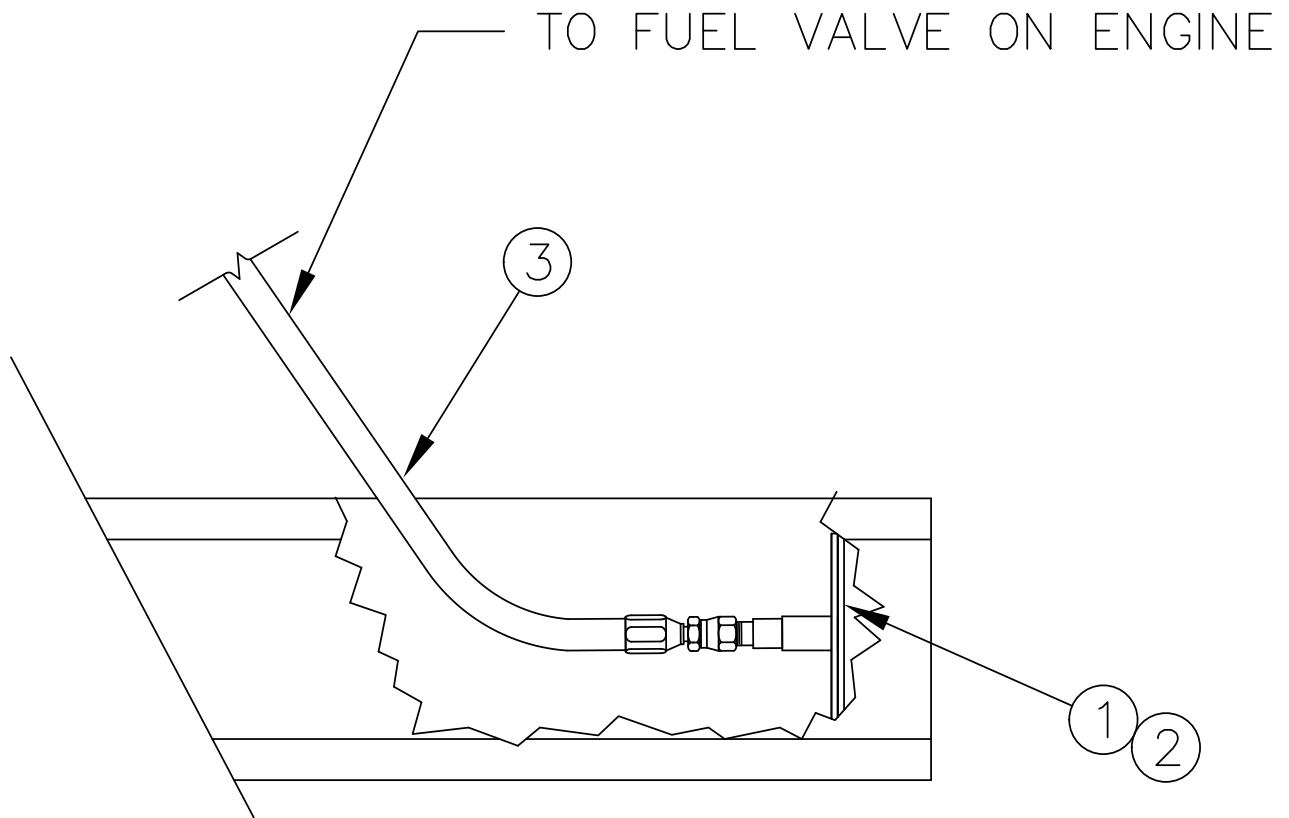
VAPOR FUEL SYSTEM ASSEMBLY PSS75LS/A



REF #	PART NUMBER	QTY	DESCRIPTION
1	F1-9	1*	Air Cleaner
2	22626-000	1	3/4" X 1-3/8" Pipe Nipple
3	56896-000	1	3/4" 45° Elbow
4	54074-007	1	3/4" X 8" Pipe Nipple
5	81077-000	1	3/4" to 1" Reducer
6	81017-000	1	Regulator
7	81103-000	4 FT	1-1/4" I.D. Hose
8	81018-001	2	Hose Clamp
9	23996-000	2	1" 45° Elbow
10	81079-000	3	1" X 1-3/8" Pipe Nipple
11	42942-001	1	Solenoid
12	99065-000	1	Fuel Cover Weldment
13	99526-001	1	Governor Actuator
14	SEE TABLE	1	Carburetor
15	99366-000	1	Intake Manifold Adapter
16	350133-3	1	Actuator Mounting Bracket
17	DYNK 218-2	1**	Clevis
18	AKKH 175	2**	Rod Bearing
19	DYNK 21-16	1**	Threaded Rod
NI	99673-000	1	Governor Control
NI	Not Illustrated		
*	Impco Part #		
**	Barber Colman Part #		

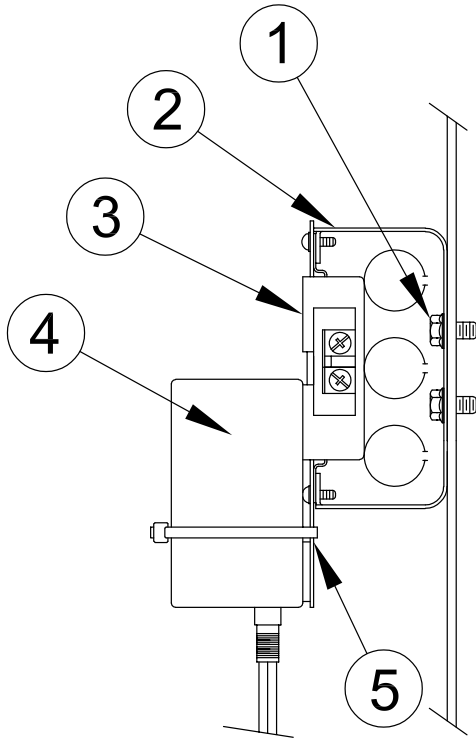
TYPE OF FUEL	PART NUMBER
NATURAL GAS	92260-003
LIQUID PROPANE (L.P.)	92260-002

LP LIQUID WITHDRAWAL ASSEMBLY



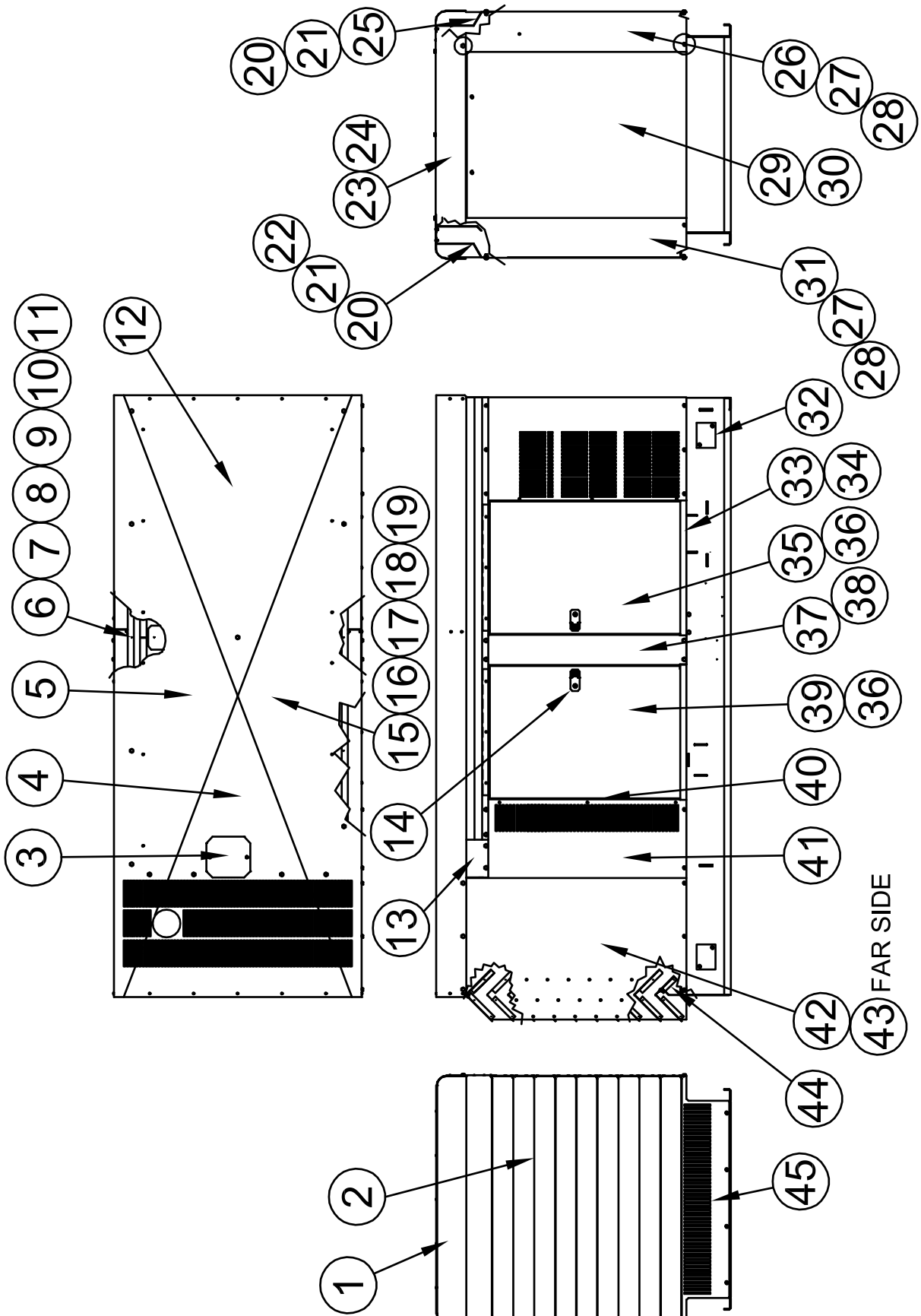
3	B-92940-005	1	HOSE ASSEMBLY
2	A-65004-000	4	SELF-TAPPING SCREW, 1/4-20 X 1/2
1	A-99065-001	1	FUEL COVER PLATE
ITEM	PART NO	QUAN.	DESCRIPTION

BATTERY TENDER ASSEMBLY



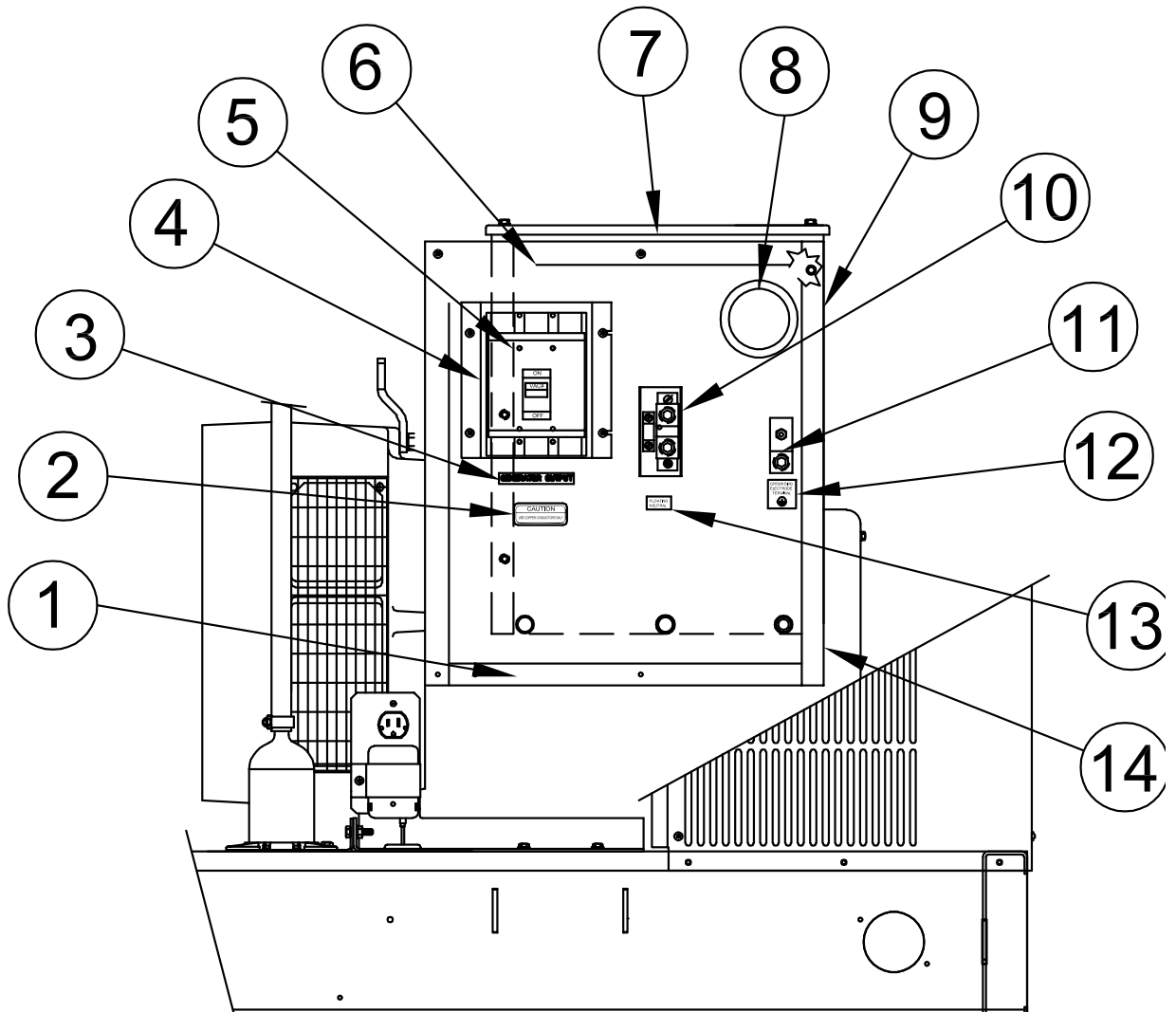
REF #	PART NUMBER	QTY	DESCRIPTION
1	52644-000	2	Self-tapping Screw
2	92789-000	1	Conduit Box
3	24749-000	1	Duplex Receptacle
4	16287-000	1	Battery Tender
5	59026-001	1	Recpt. Cover Plate

HOUSING ASSEMBLY



REF #	PART NUMBER	QTY	DESCRIPTION
1	99368-001	1	Roof Front End Panel
2	99631-001	9	Grill Middle Louver
3	62026-003	1	Radiator Cap Cover Plate
4	99788-401	1	Foam Part
5	99341-002	1	Roof
6	99788-403	4	Foam Part
7	99327-001	4	Side Sill Baffle
8	62912-000	6 FT	Foam Strip
9	92495-000	6	1/4" - 20 Retained Nut
10	99788-402	1	Foam Part
11	99060-004	1	Air Cleaner Cover Plate
12	99788-404	1	Foam Part
13	95229-005	4	Door Latch
14	99328-000	1	Roof Support
15	62825-011	1	Spacer
16	65000-002	1	1/4" - 20 X 1" Bolt
17	65000-001	28	1/4" - 20 X 3/4" Bolt
18	16248-000	3	1/4" - 20 Flange Nut
19	99339-000	2	Roof Brace
20	99333-001	4	Door Jam
21	99325-002	1	Left Side Sill
22	99368-003	1	Roof End Panel
23	99788-413	1	Foam Part
24	99325-003	1	Right Side Sill
25	99319-009	1	Right Rear Corner Post
26	99788-411	2	Foam Part
27	99320-003	2	Rear Corner Post Baffle
28	99339-001	4	Formed Spacer
29	15680-020	1	Rear Door
30	99788-487	1	Foam Part
31	99319-008	1	Left Rear Corner Post
32	99060-000	4	Lifting Hole Cover Plate
33	99333-003	4	Bottom Door Stop
34	64903-000	4	Lead Wire Assembly
35	15680-022	2	Left Swing Door
36	99788-488	4	Foam Part
37	99323-002	2	Mullion
38	99788-412	2	Foam Part
39	15680-021	2	Right Swing Door
40	98375-013	4	Hinge

CIRCUIT BREAKER ASSEMBLY

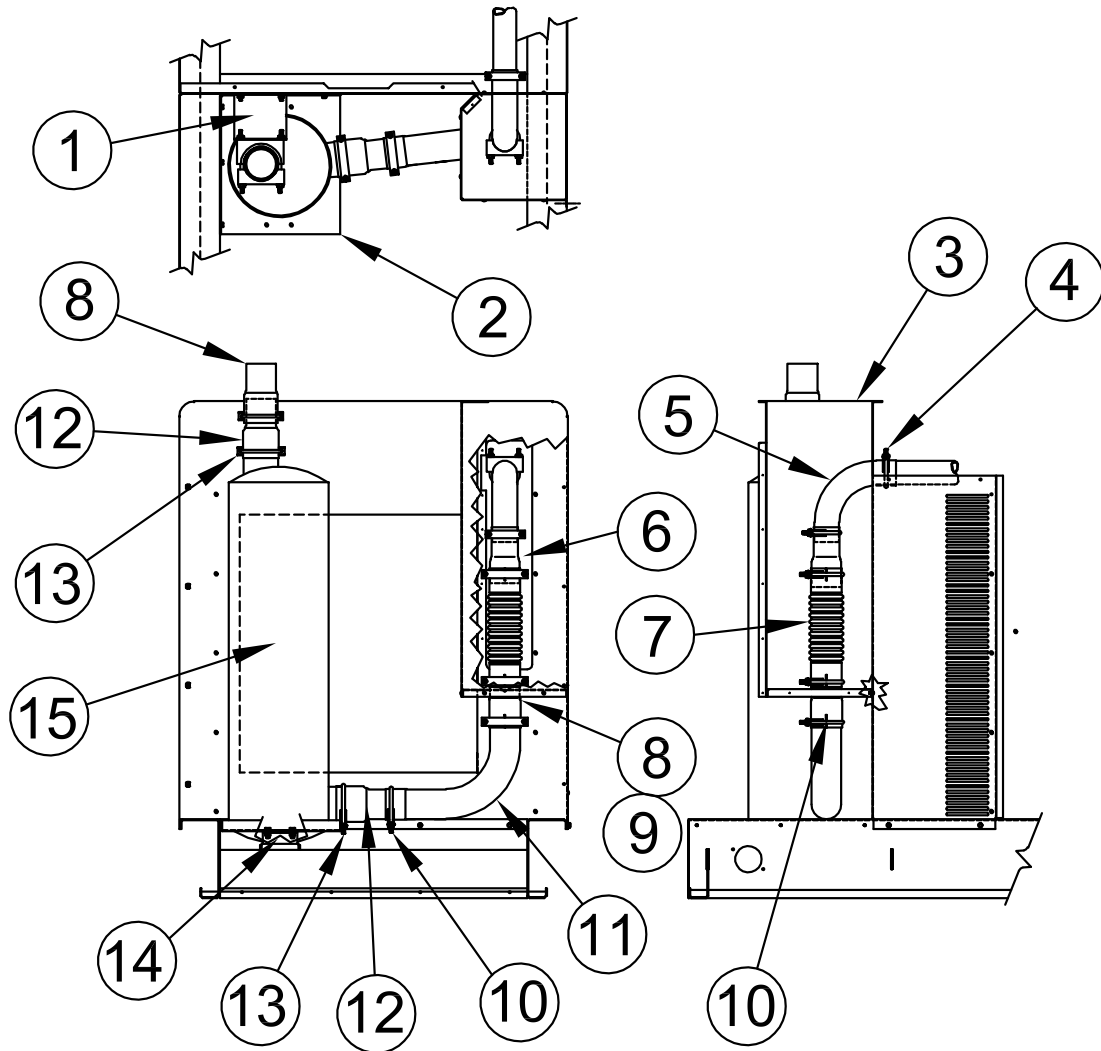


REF #	PART NUMBER	QTY	DESCRIPTION
1	99828-007	1	Cabinet, Bottom Panel
2	64576-009	1	Decal, Copper Conductor
3	16503-000	1	Decal, Output
4	SEE TABLE	1	Circuit Breaker Spacer
5	SEE TABLE	1	Circuit Breaker
6	99827-006	1	Cabinet, Cover Plate
7	99828-006	1	Cabinet, Top Panel
8	58684-000	1 FT	Edge Trim
9	99826-000	1	Back & Side Panel
10	SEE TABLE	1	Neutral Terminal
11	58060-000	1	Ground Terminal Lug
12	16499-001	1	Decal, Ground Terminal
13	16501-000	1	Decal, Flouting Neutral
14	64893-001	1	Angle Bracket
NI	SEE TABLE	1	Lead Wire Group

NI Not Illustrated

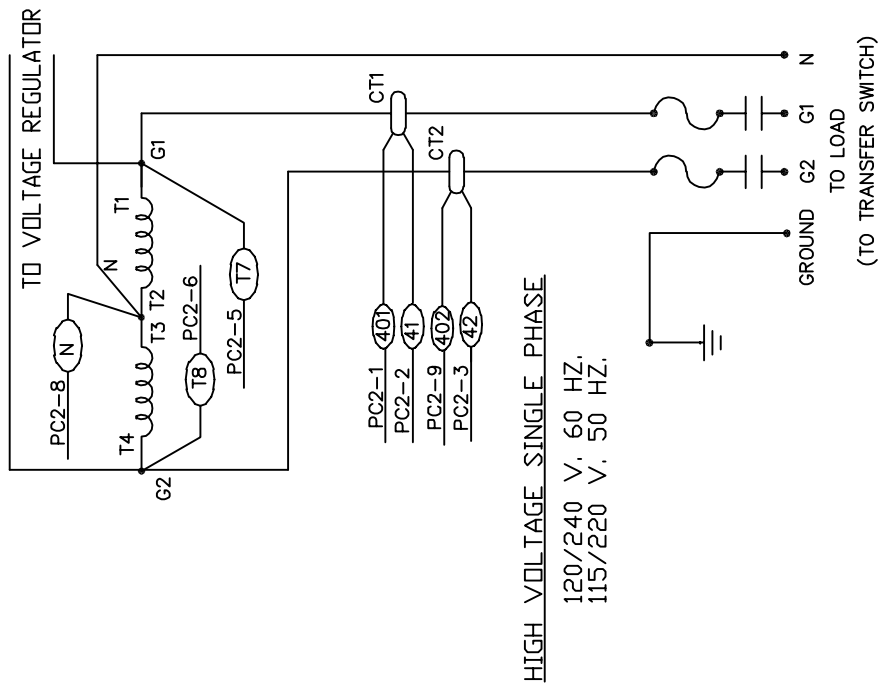
MODEL	PART NUMBER	DESCRIPTION	LEAD WIRE GROUP	NEUTRAL TERMINAL	CB SPACER
PSS75LS-3/A	81094-008	300A 2-POLE 240V BREAKER	99830-000	350124-2	99831-000
PSS75LS-4/A	81096-007	250A 3-POLE 240V BREAKER	99830-001	350124-4	99831-000
PSS75LS-17/A	81096-006	225A 3-POLE 240V BREAKER	99830-001	350124-4	99831-001
PSS75LS-18/A	81097-008	100A 3-POLE 480V BREAKER	99830-003	350124-4	99831-002

EXHAUST ASSEMBLY

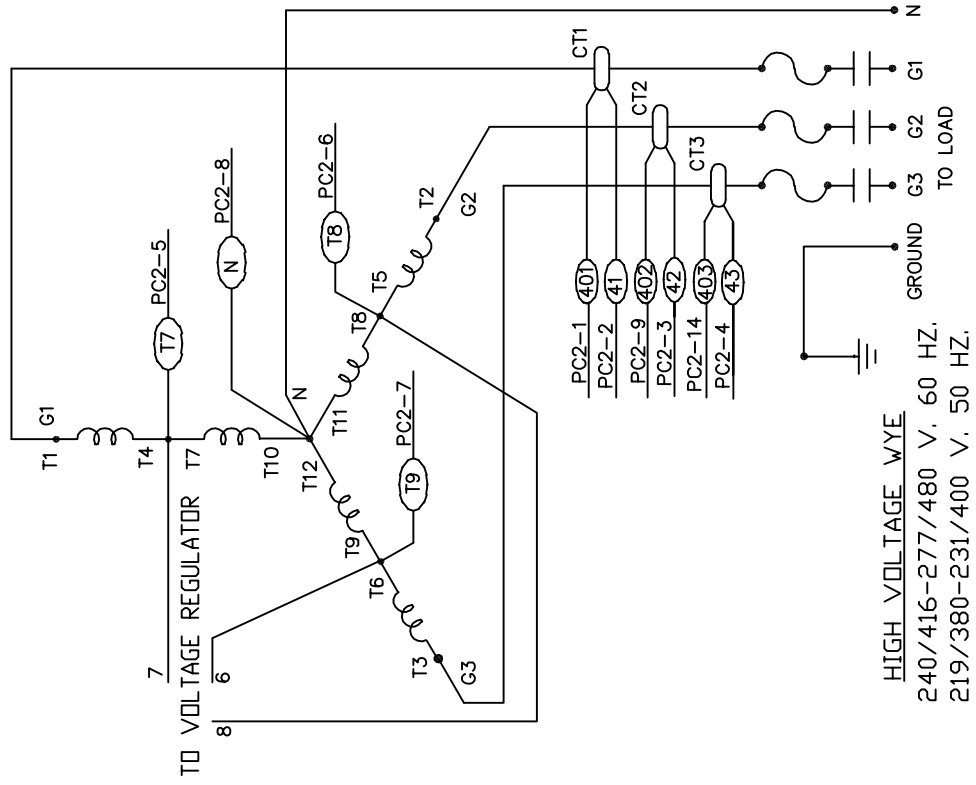


REF #	PART NUMBER	QTY	DESCRIPTION
1	99336-001	1	Muffler Top Support
2	99336-002	1	Muffler Support Tray
3	64714-001	1	Exhaust Shield
4	93489-002	2	2-1/2" Exhaust Clamp
5	99502-008	1	2.5" 90° Exhaust Elbow
6	97759-004	1	3" to 2-1/2" Reducer
7	16016-004	1	Flex Exhaust
8	97759-008	2	3" Exhaust Extension
9	64720-001	1	Shield Bottom Panel
10	93489-001	5	3" Exhaust Clamp
11	99502-007	1	3" 90° Exhaust Elbow
12	97759-007	2	3.5" to 3" Reducer
13	93489-000	2	3.5" Exhaust Clamp
14	99337-002	1	Muffler Support Bracket
15	97409-002	1	Muffler

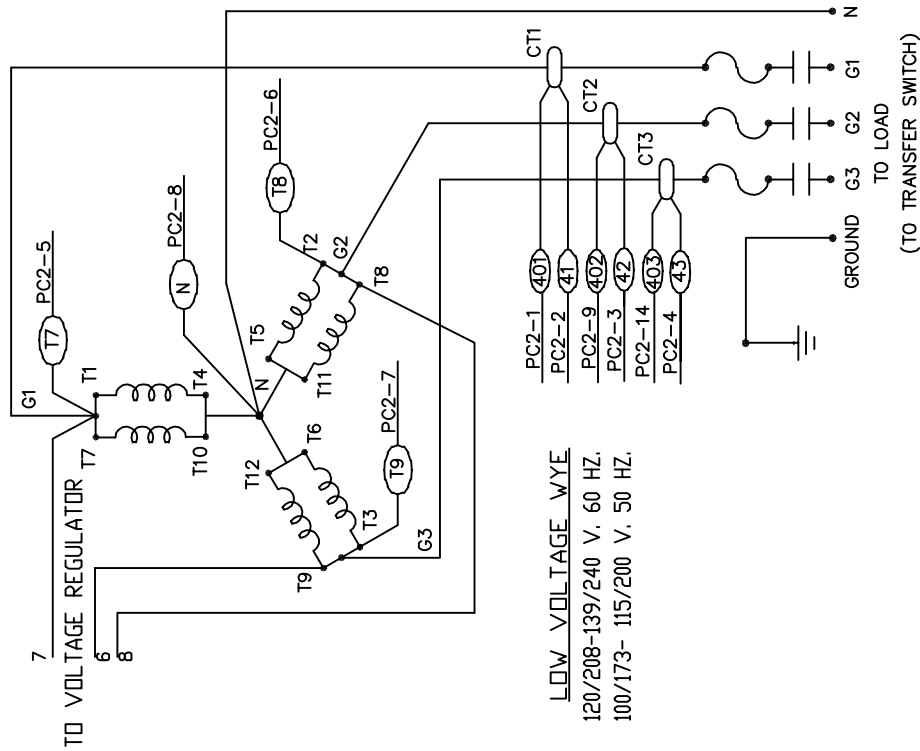
PSS70LS-3/A



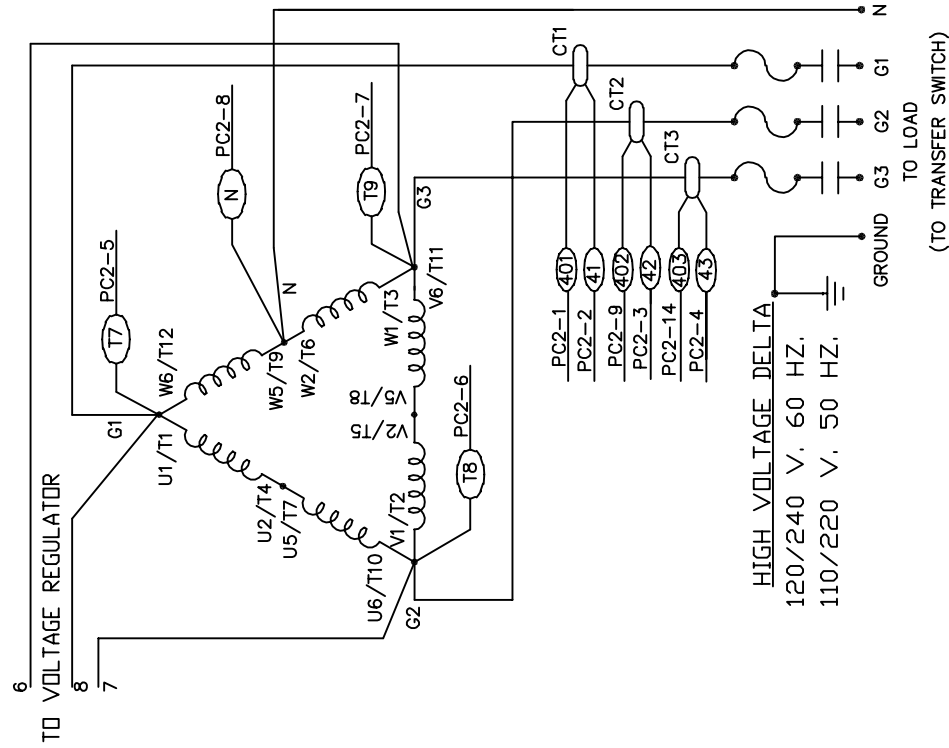
PSS70LS-18/A



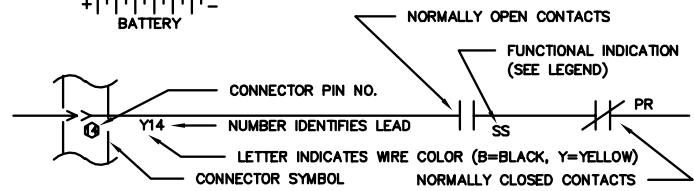
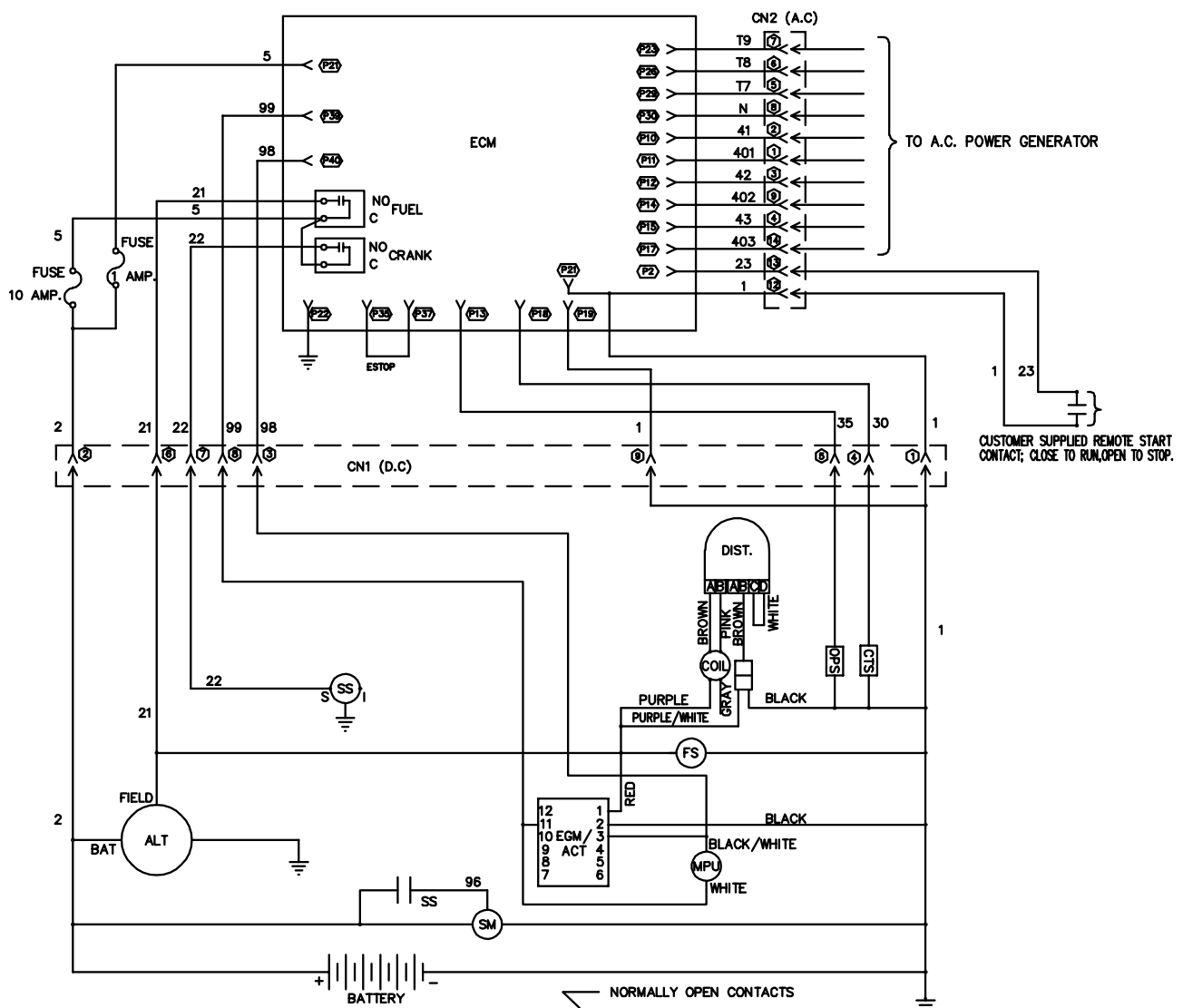
PSS70LS-4/A



PSS70LS-17/A



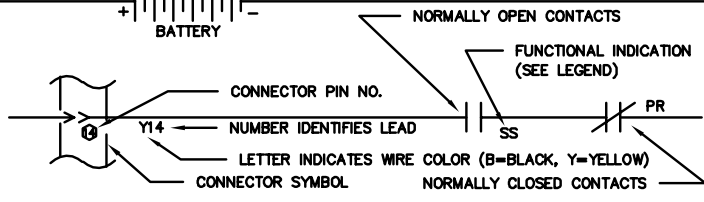
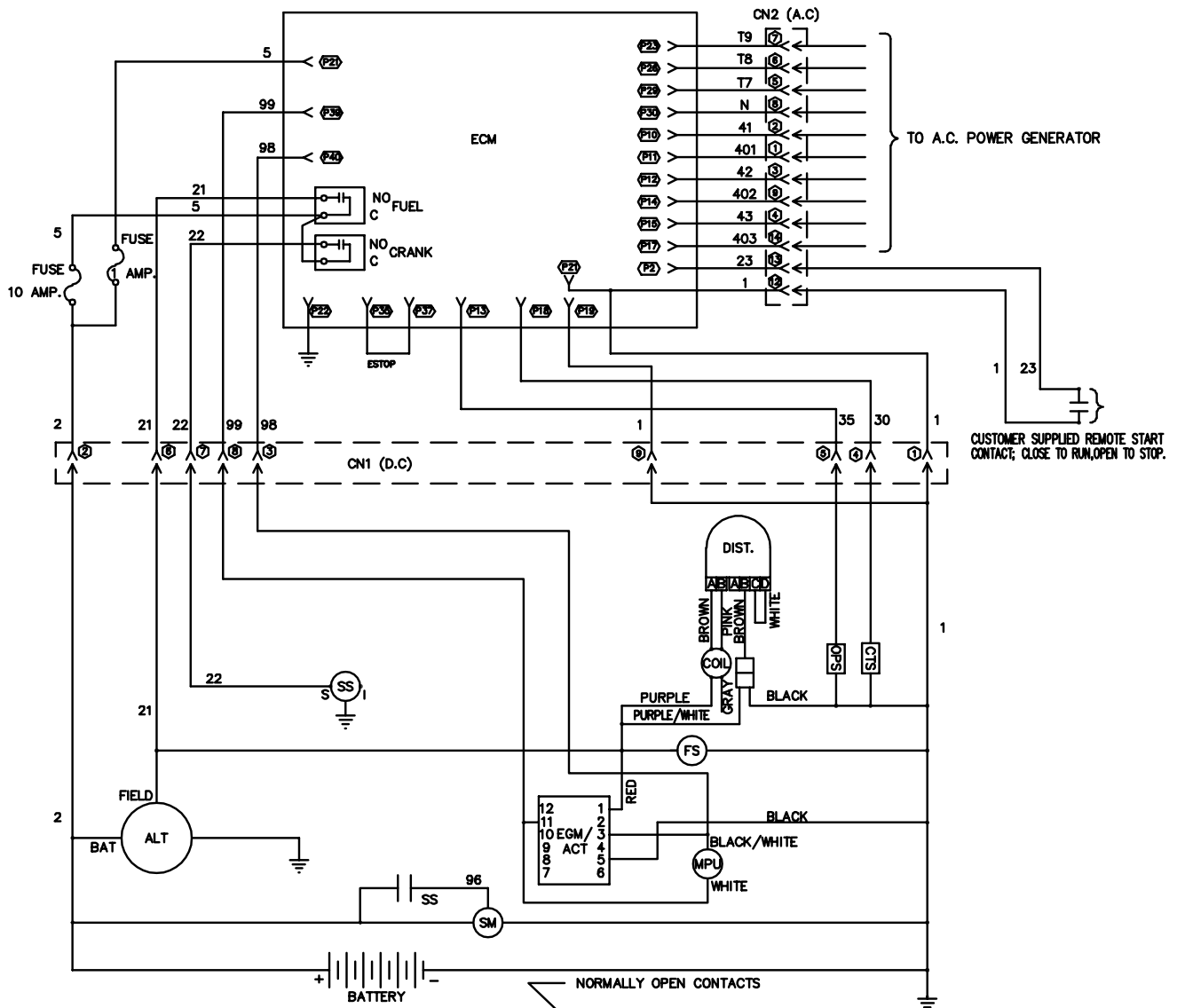
"LCS" SERIES GOVERNOR (ORIGINAL DESIGN)



- LEGEND**
- | | |
|---------|---------------------------------------|
| ALT | ALTERNATOR |
| CN1,CN2 | WIRING HARNESS CONNECTORS |
| CTS | COOLANT TEMPERATURE SENDER |
| DIST. | ENGINE IGNITION DISTRIBUTOR |
| ECM | ENGINE CONTROL MODULE |
| EGM/ACT | ELECTRONIC GOVERNOR MODULE / ACTUATOR |
| FS | FUEL SOLENOID |
| GND | GROUND (CHASSIS OR FRAME) |
| MPU | MAGNETIC PICKUP UNIT |
| OPS | OIL PRESSURE SENDER |
| SS | ENGINE STARTER MOTOR SOLENOID |
| SM | ENGINE STARTER MOTOR |

DC WIRING SCHEMATIC

“L” SERIES GOVERNOR (WITH NEW GOVERNOR REPLACEMENT)



LEGEND

- | | |
|---------|---------------------------------------|
| ALT | ALTERNATOR |
| CN1,CN2 | WIRING HARNESS CONNECTORS |
| CTS | COOLANT TEMPERATURE SENDER |
| DIST. | ENGINE IGNITION DISTRIBUTOR |
| ECM | ENGINE CONTROL MODULE |
| EGM/ACT | ELECTRONIC GOVERNOR MODULE / ACTUATOR |
| FS | FUEL SOLENOID |
| GND | GROUND (CHASSIS OR FRAME) |
| MPU | MAGNETIC PICKUP UNIT |
| OPS | OIL PRESSURE SENDER |
| SS | ENGINE STARTER MOTOR SOLENOID |
| SM | ENGINE STARTER MOTOR |

DC WIRING SCHEMATIC