



ILLUSTRATED PARTS LIST

PSS70-3/NG, LP, LPG

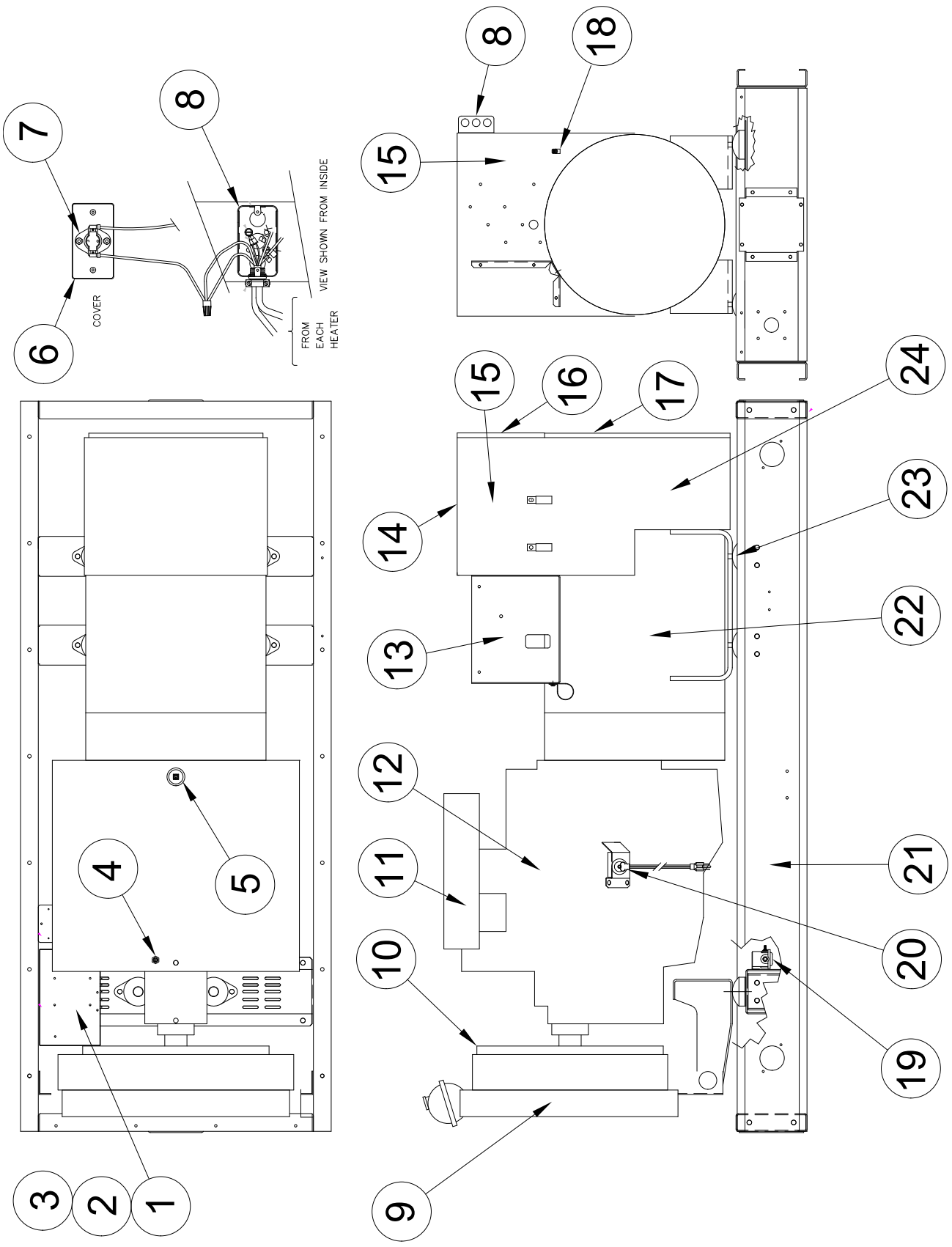
PSS70-4/NG, LP, LPG

PSS70-17/NG, LP, LPG

PSS70-18/NG, LP, LPG

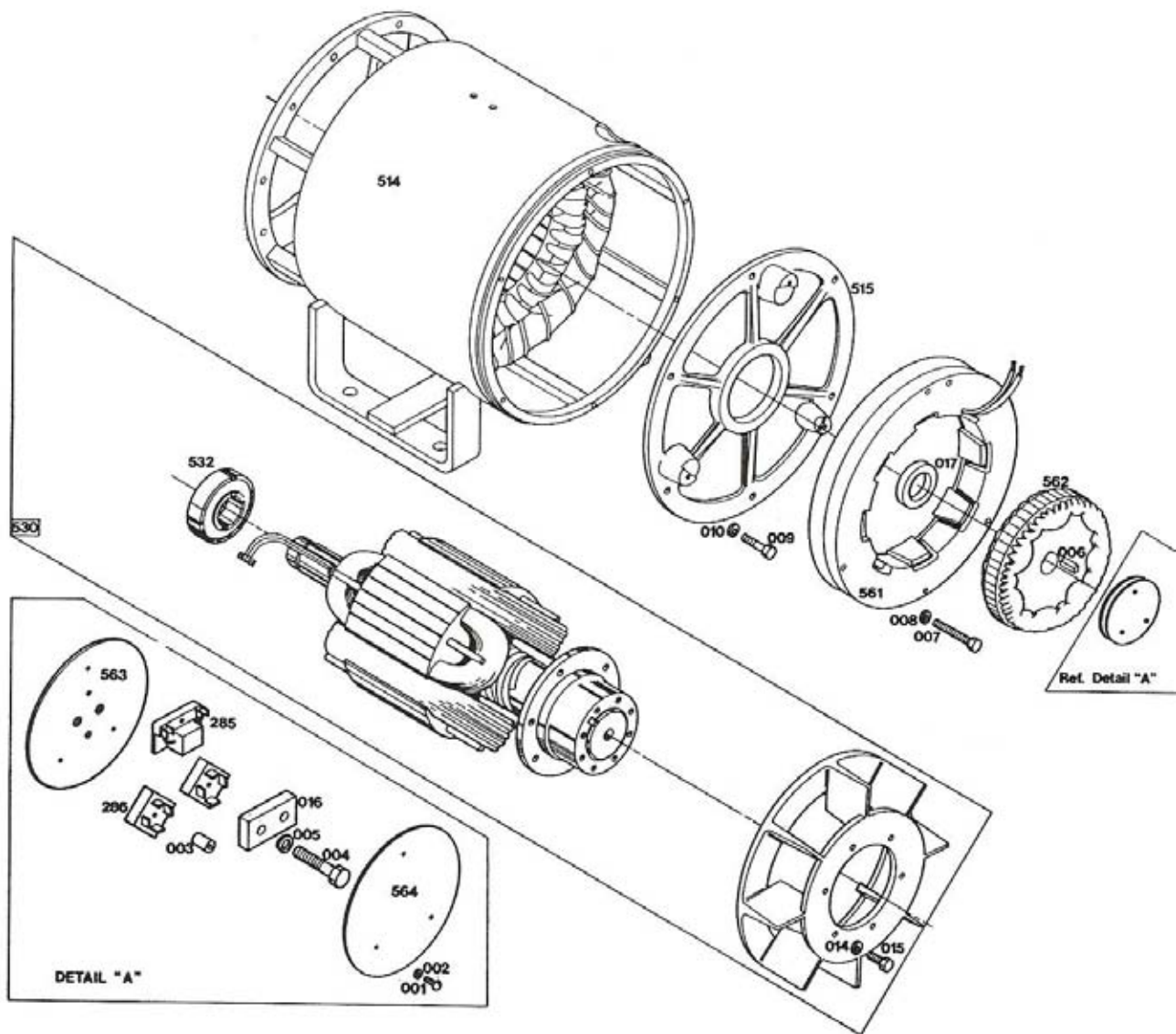
225 S. CORDOVA AVE.
LECENTER, MN 56057
507-357-6821
SERVICE DEPT.
507-357-6831
wincogen.com

ENGINE / GENERATOR ASSEMBLY



| REF # | PART NUMBER | QTY | DESCRIPTION |
|-------|-----------------|-----|---------------------------------|
| 1 | 99317-000 | 1 | Battery Rack |
| 2 | 53220-059 | 1 | Battery Negative (-) Cable |
| 3 | 53220-058 | 1 | Battery Positive (+) Cable |
| 4 | 99265-000 | 1 | Water Temperature Sender |
| 5 | 99267-001 | 1 | Oil Pressure Sender |
| 6 | 15812-000 | 1 | Conduit Box Cover |
| 7 | 15816-000 | 1 | Thermostat (Temp sensor) |
| 8 | 92789-000 | 2 | Conduit Box |
| 9 | Reference | 1 | Radiator |
| 10 | 99322-000 | 1 | Fan Guard |
| 11 | F1-9 | 1* | Impco Air Filter |
| 12 | 99405-000 | 1 | Engine, Ford LSG-875P-6006-E |
| 13 | 99057-000 | 1 | Engine Control Support |
| 14 | 93146-002 | 1 | Top Cover |
| 15 | 93148-001 | 1 | Mounting Panel |
| 16 | 93160-000 | 1 | Upper Front Cover |
| 17 | 93150-002 | 1 | Lower Front Cover |
| 18 | 48042-000 | 1 | Ground Lug |
| 19 | 80980-000 | 1 | Solenoid |
| 20 | 82505-002 | 2 | Block Heater |
| 21 | 99381-000 | 1 | Base Assembly |
| 22 | 92917-007 | 1 | Generator Parts |
| 23 | 98956-001 | 6 | Shock Mounts |
| 24 | 93147-002 | 1 | Inside Panel |
| NI | PF2 or PF2217 | 1** | Oil Filter |
| NI | 99347-000 | 1 | AC Harness Assembly |
| NI | 99420-001 | 1 | Engine Wiring Harness |
| * | Impco Part # | | |
| ** | AC Delco Part # | | |

GENERATOR ASSEMBLY



| REF # | PART NUMBER | QTY | DESCRIPTION |
|-------|-------------|-----|----------------------------|
| 001 | 91410-000 | 3 | 10-32 X 7/8" Threaded Stud |
| 003 | 91454-001 | 3 | 10-32 X 3/4" Spacer |
| 004 | 93617-005 | 2 | 7/16-14 X 1.5" Bolt |
| 005 | 90570-001 | 2 | Lock Washer |
| 006 | 93622-000 | 1 | Key |
| 007 | 91431-000 | 3 | 1/4-28 X 2.75" Bolt |
| 008 | 479-000 | 3 | Split Lock Washer |
| 009 | 91256-000 | 6 | 7/16-14 X 1.75" Bolt |
| 010 | 90570-000 | 6 | Split Lock Washer |
| 016 | 93616-000 | 1 | Exciter Retainer Bar |

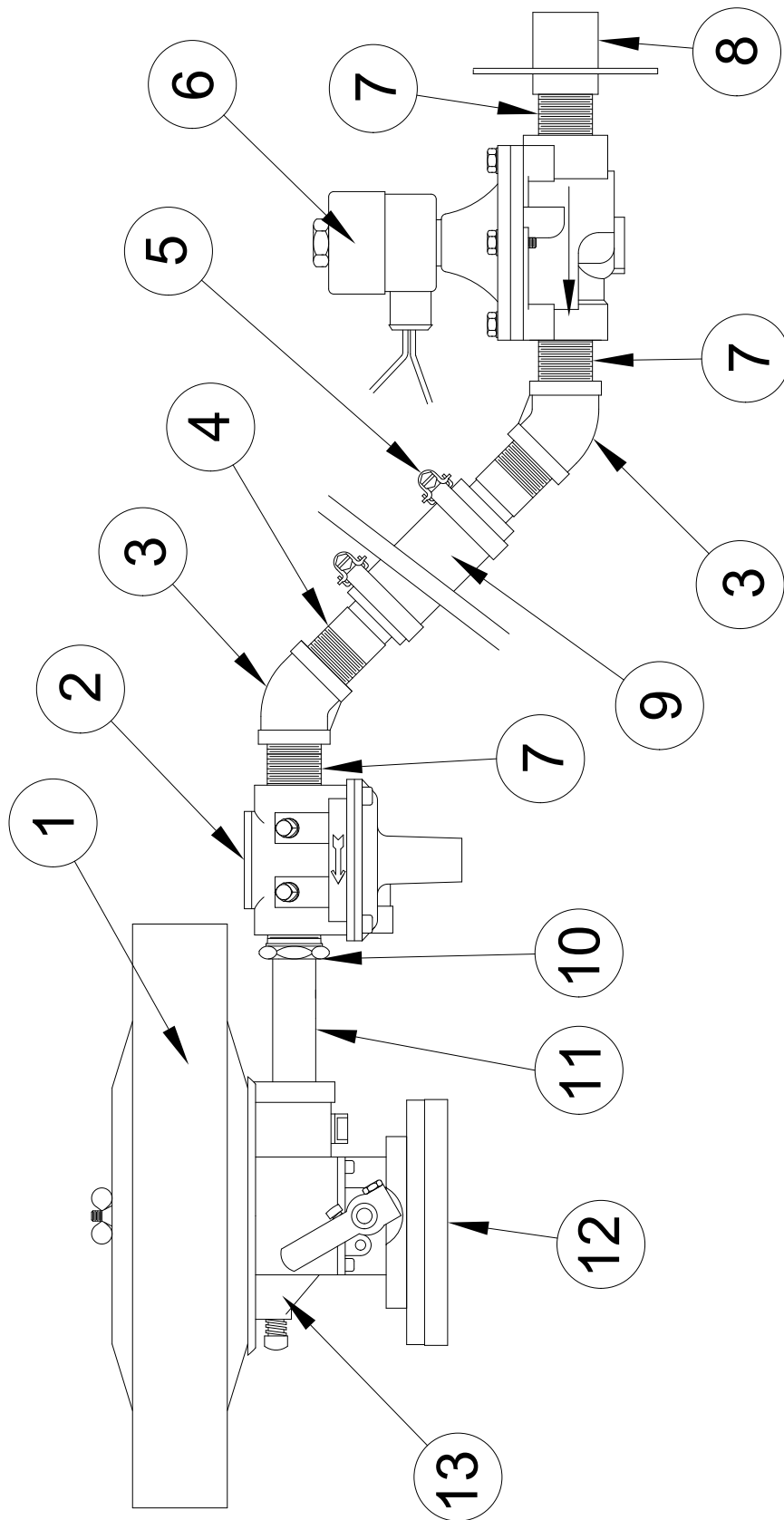
| REF # | PART NUMBER | QTY | DESCRIPTION |
|--------|------------------------|-----|----------------------------|
| 017 | 93615-000 | 1 | Exciter Support Collar |
| 285 | 91455-000 | 1 | Surge Suppressor |
| 286 | 91452-000 | 2 | Bridge Rectifier |
| 514 | 92916-007 | 1 | Stator Assembly |
| 515 | 92760-000 | 1 | Machined End Bracket |
| 530 | 92884-002 | 1 | Complete Rotor Assembly |
| 532 | 92820-000 | 1* | Bearing |
| 561 | 91665-000 | 1 | Exciter Stator |
| 561a | 91664-000 | 1 | Exciter Stator Coil |
| 562 | 91442-000 | 1 | Exciter Rotor |
| 563 | 91411-000 | 1 | Retainer |
| 564 | 91491-000 | 1 | Insulator |
| * | Comes with rotor assy. | | |
| Detail | | | |
| A | 91413-000 | 1 | Complete Retainer Assembly |



DECALS

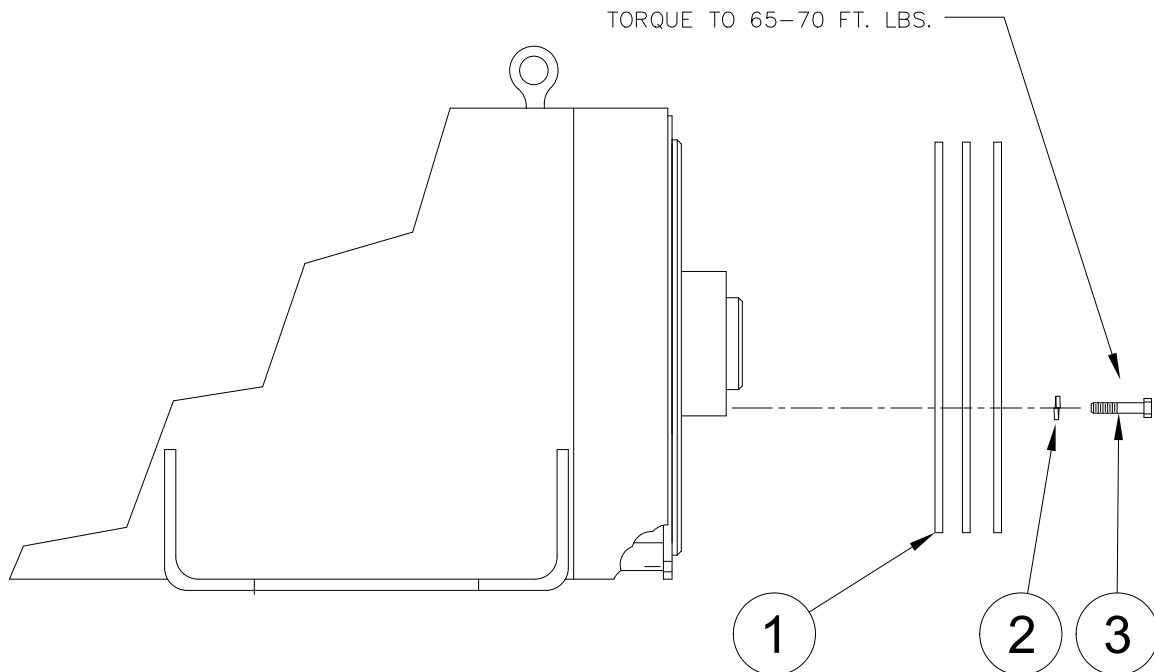
| REF # | PART NUMBER | QTY | DESCRIPTION |
|-------|-----------------|-----|--------------------|
| NI | 15750-001 | 1 | Ground Decal |
| NI | 97813-000 | 6 | Auto Start Warning |
| NI | 15209-000 | 2 | Warning Decal |
| NI | 56596-000 | 1 | Fuel Decal |
| NI | 56597-000 | 1 | Fuel Decal |
| NI | 53113-001 | 3 | Winco Logo Decal |
| NI | Not Illustrated | | |

VAPOR FUEL SYSTEM ASSEMBLY



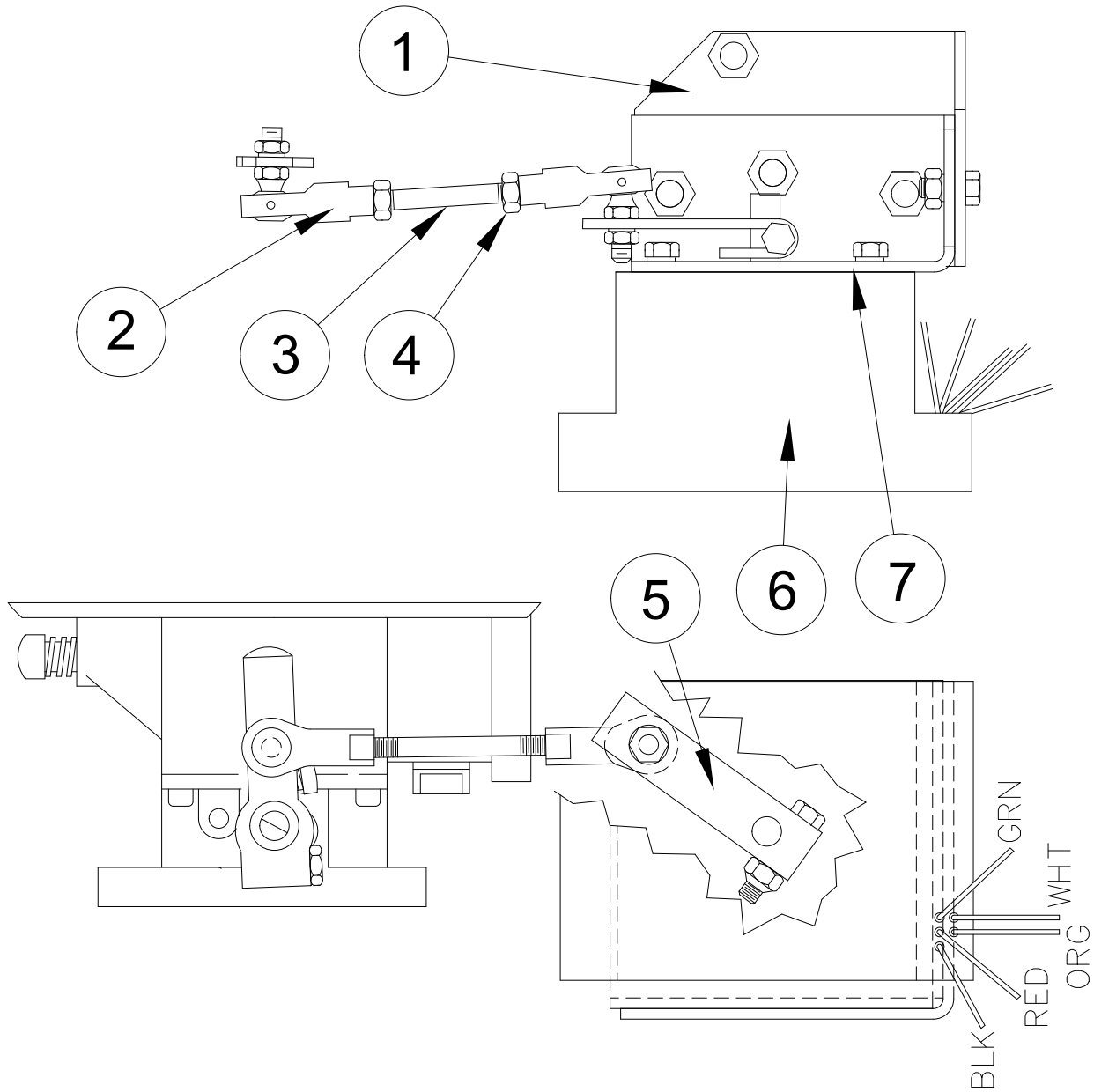
| REF # | PART NUMBER | QTY | DESCRIPTION |
|-------|--------------|------|---------------------------|
| 1 | F1-9 | 1* | Impco Air Filter Element |
| 2 | 81017-000 | 1 | Regulator |
| 3 | 23996-000 | 2 | Pipe Elbow |
| 4 | 93006-001 | 2 | 1" X 3" Pipe Nipple |
| 5 | 81018-001 | 2 | Hose Clamp |
| 6 | 16134-001 | 1 | Solenoid |
| 7 | 81079-000 | 3 | 1" X 1 1/2" Pipe Nipple |
| 8 | 99065-000 | 1 | Fuel Cover Weldment |
| 9 | 81103-000 | 4 FT | Vapor Fuel Hose |
| 10 | 81077-000 | 1 | Bushing |
| 11 | 54074-001 | 1 | 3/4" X 3 1/2" Pipe Nipple |
| 12 | 99366-000 | 1 | Intake Manifold Adapter |
| 13 | 92260-002 | 1 | Carburetor (LP) |
| 13 | 92260-003 | 1 | Carburetor (Natural Gas) |
| * | Impco Part # | | |

GENERATOR ADAPTER ASSEMBLY



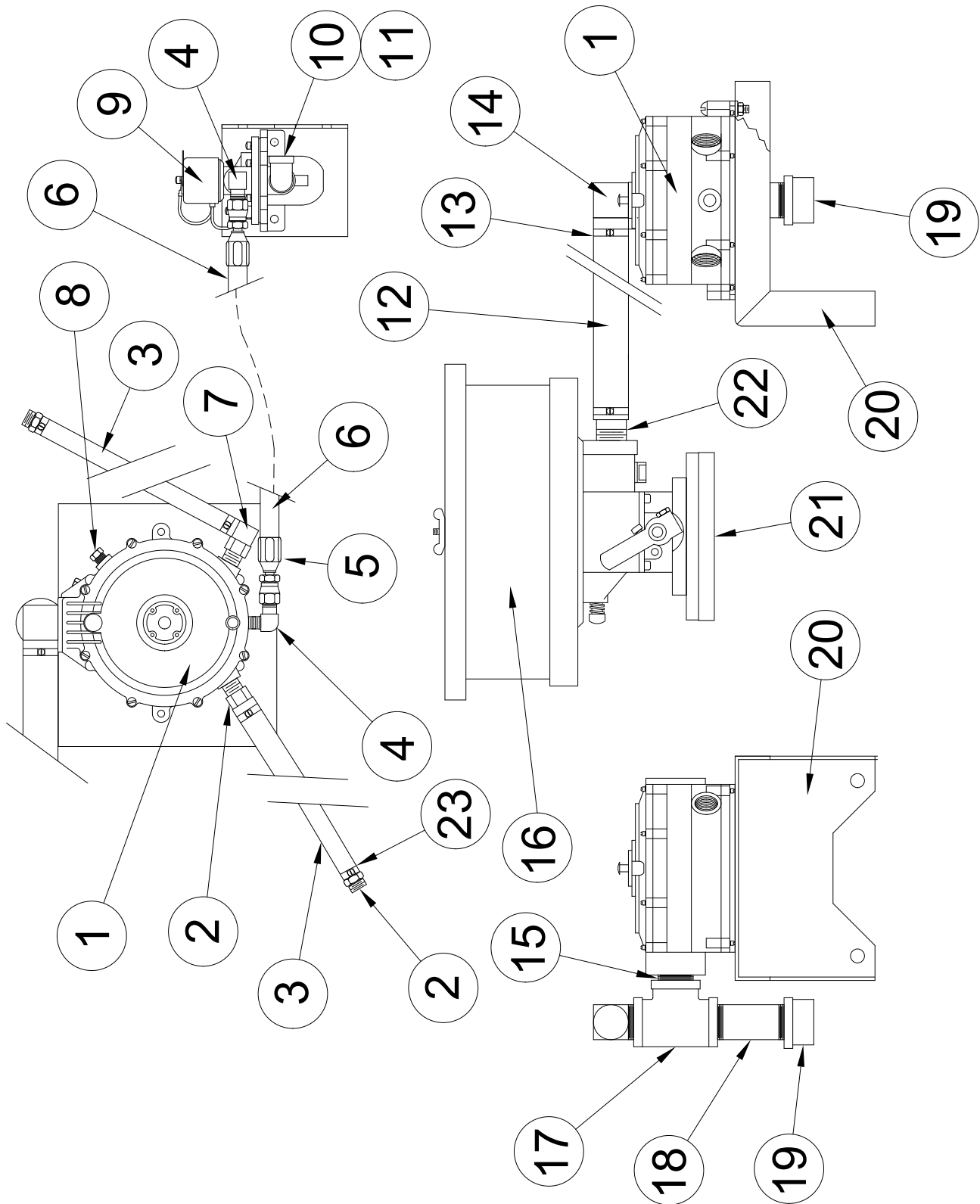
| REF # | PART NUMBER | QTY | DESCRIPTION |
|-------|-------------|-----|-------------------|
| 1 | 93505-000 | 3 | Drive Disk |
| 2 | 636-001 | 6 | Split Lock Washer |
| 3 | 95996-002 | 6 | Bolt |

GOVERNOR ASSEMBLY



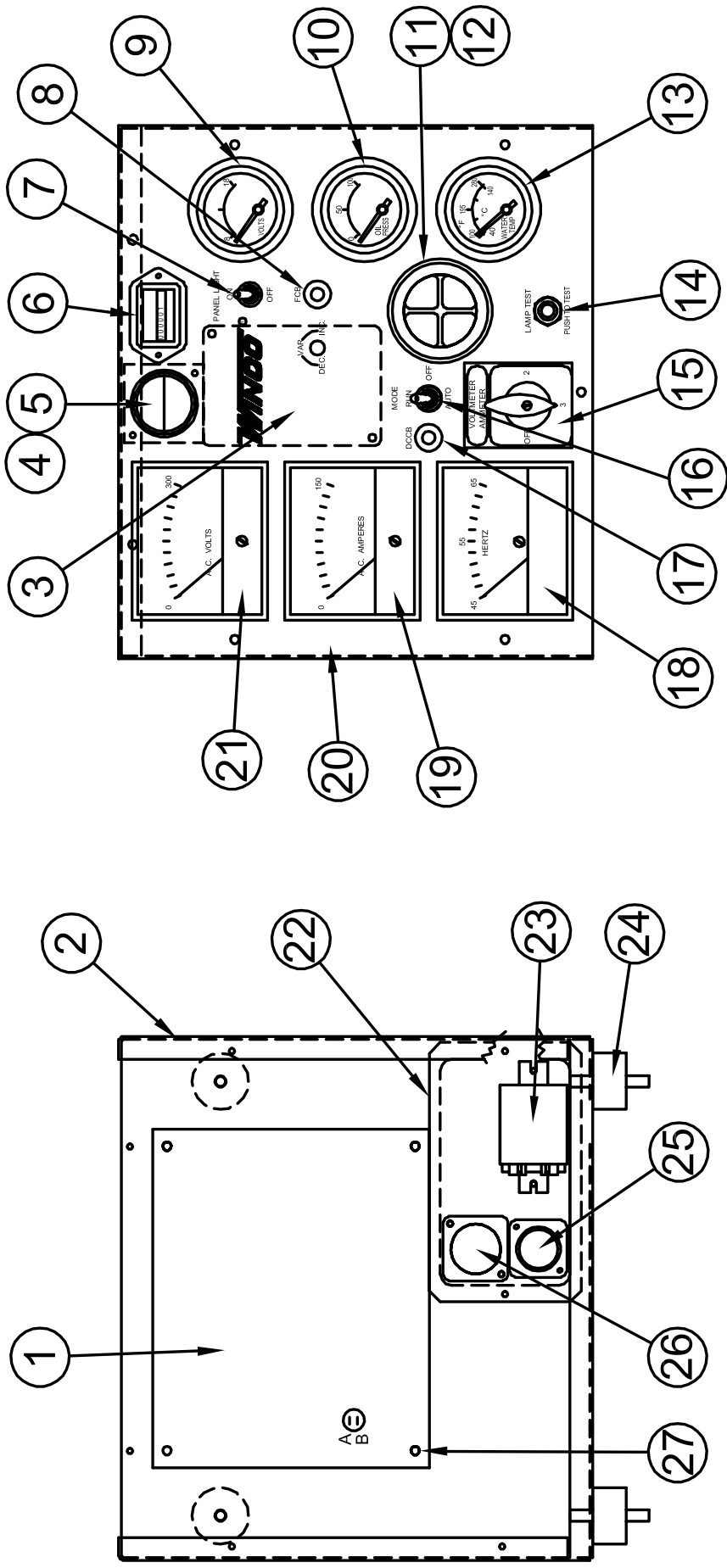
| REF # | PART NUMBER | QTY | DESCRIPTION |
|-------|-------------|-----|---------------------------|
| 1 | 99345-000 | 1 | Engine Governor Bracket |
| 2 | 63650-000 | 2 | Ball Joint |
| 3 | 82149-003 | 1 | Threaded Rod |
| 4 | 2448-000 | 4 | Lock Nut |
| 5 | 99413-000 | 1 | Governor Arm |
| 6 | 99412-000 | 1 | Electronic Governor |
| 7 | 99344-000 | 1 | Governor Mounting Bracket |

LP LIQUID WITHDRAWAL ASSEMBLY



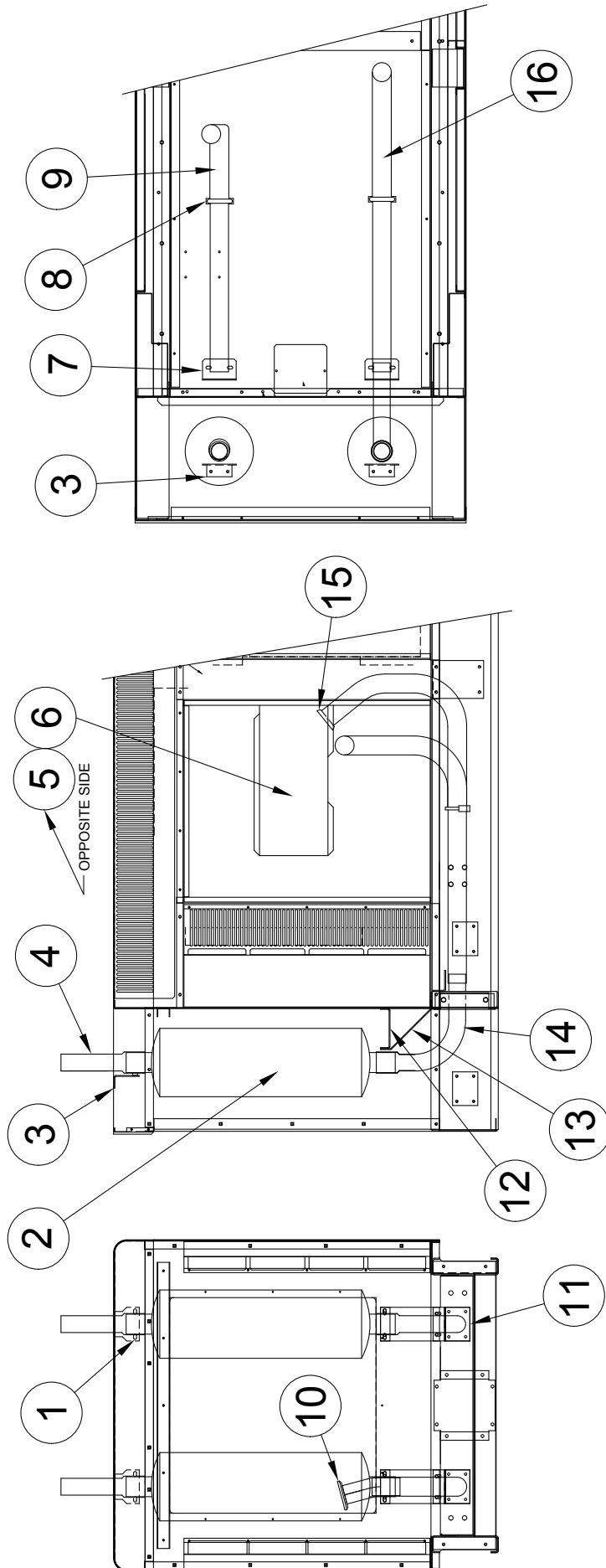
| REF # | PART NUMBER | QTY | DESCRIPTION |
|-------|-------------|------|--------------------------------|
| 1 | 81635-000 | 1 | Gas Converter |
| 2 | 92388-000 | 2 | Brass Hose Fitting 3/8" X 5/8" |
| 3 | 56107-000 | 3 FT | 5/8" Heater Hose |
| 4 | 81643-002 | 2 | Adapter Fitting |
| 5 | 81642-000 | 2 | Hose Fitting |
| 6 | 81640-004 | 4 FT | LP (Liquid) Fuel Hose |
| 7 | 92382-000 | 1 | 90° Brass Elbow |
| 8 | 23064-000 | 1 | 1/4" Plug |
| 9 | 81976-000 | 1 | Fuel-lock Strainer |
| 10 | 23691-000 | 1 | 1/4" Pipe Nipple |
| 11 | 92533-000 | 1 | 90° 1/4" Pipe Elbow |
| 12 | 49409-000 | 14" | 1" Fuel Hose |
| 13 | 50245-000 | 2 | Hose Clamp |
| 14 | 92382-005 | 1 | 1" (zinc) 90° Elbow |
| 15 | 81079-000 | 1 | 1" X 1 1/2" Pipe Nipple |
| 16 | F1-9 | 1* | Air Filter Element |
| 17 | 93018-000 | 1 | Pipe Tee |
| 18 | 81079-002 | 1 | 1" X 3 1/2" Pipe Nipple |
| 19 | 44109-000 | 1 | Pipe Cap |
| 20 | 93088-001 | 1 | Converter Bracket |
| 21 | 99366-000 | 1 | Intake Manifold Adapter |
| 22 | 81084-000 | 1 | 1" X 3" Pipe Nipple |
| 23 | 81018-004 | 4 | Hose Clamp |

CONTROL CABINET ASSEMBLY



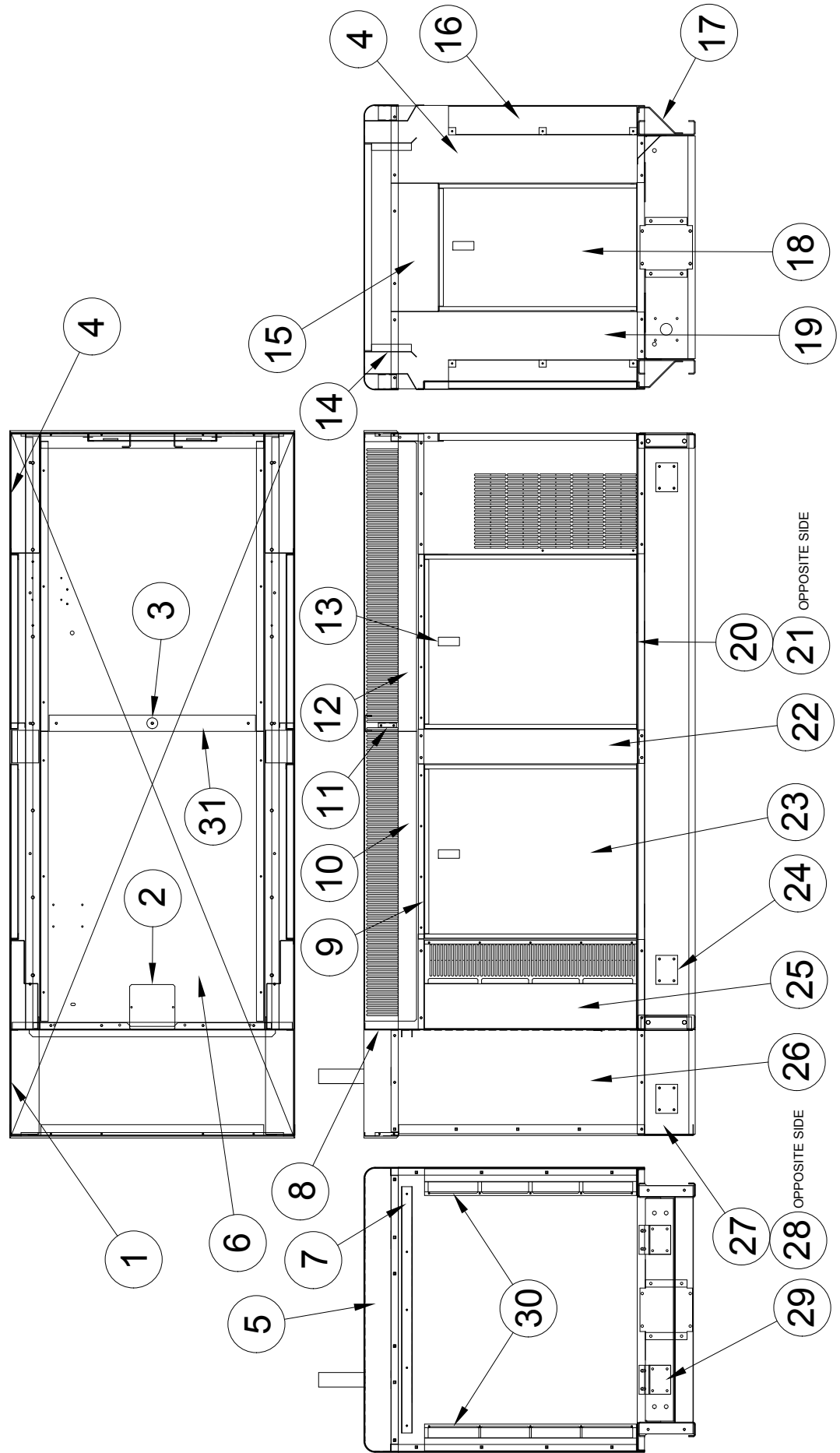
| REF # | PART NUMBER | QTY | DESCRIPTION |
|-------|-----------------|-----|-------------------------------|
| 1 | 72190-416 | 1 | Engine Control Module |
| 2 | 99056-000 | 1 | Control Cabinet Back |
| 3 | 98884-000 | 1 | Voltage Regulator |
| 4 | 99297-000 | 1 | Light Backing Plate |
| 5 | 95807-000 | 1 | Panel Light |
| 6 | 58166-006 | 1 | Running Time Meter |
| 7 | 71215-001 | 1 | Toggle Switch |
| 8 | 91286-007 | 1 | 5 Amp Circuit Breaker |
| 9 | 99268-000 | 1 | DC Voltage Gauge |
| 10 | 99266-000 | 1 | Oil Pressure Gauge |
| 11 | 98946-001 | 1 | Light Cluster |
| 12 | 98947-000 | 1 | Light Cluster Harness |
| 13 | 99264-000 | 1 | Water Temperature Gauge |
| 14 | 71444-001 | 1 | Push Button Switch |
| 15 | 99003-001 | 1 | Selector Switch -3 models |
| 15 | 99003-000 | 1 | Selector Switch -4, -17, -18 |
| 16 | 71216-001 | 1 | Toggle Switch |
| 17 | 91286-000 | 1 | 15 Amp Circuit Breaker |
| 18 | 99272-002 | 1 | Frequency Meter |
| 19 | 99271-005 | 1 | Ammeter -3 model |
| 19 | 99271-004 | 1 | Ammeter -4, -17 models |
| 19 | 99271-002 | 1 | Ammeter -18 model |
| 20 | 99055-000 | 1 | Control Cabinet Front |
| 21 | 99270-003 | 1 | Voltmeter -3, -4, -17 models |
| 21 | 99270-002 | 1 | Voltmeter -18 model |
| 22 | 99343-000 | 1 | Connector Mounting Plate |
| 23 | 59944-006 | 1 | Relay |
| 24 | 71605-003 | 4 | Shock Mount |
| 25 | 96925-005 | 1 | 9 Pin Connector |
| 26 | 96925-002 | 1 | 14 Pin Connector |
| 27 | 91454-003 | 1 | Spacer |
| NI | 71234-006 | 2 | Current Transformer -3 model |
| NI | 71234-001 | 3 | Current Transformer -4, -17 |
| NI | 71234-004 | 3 | Current Transformer -18 model |
| NI | Not Illustrated | | |

EXHAUST ASSEMBLY



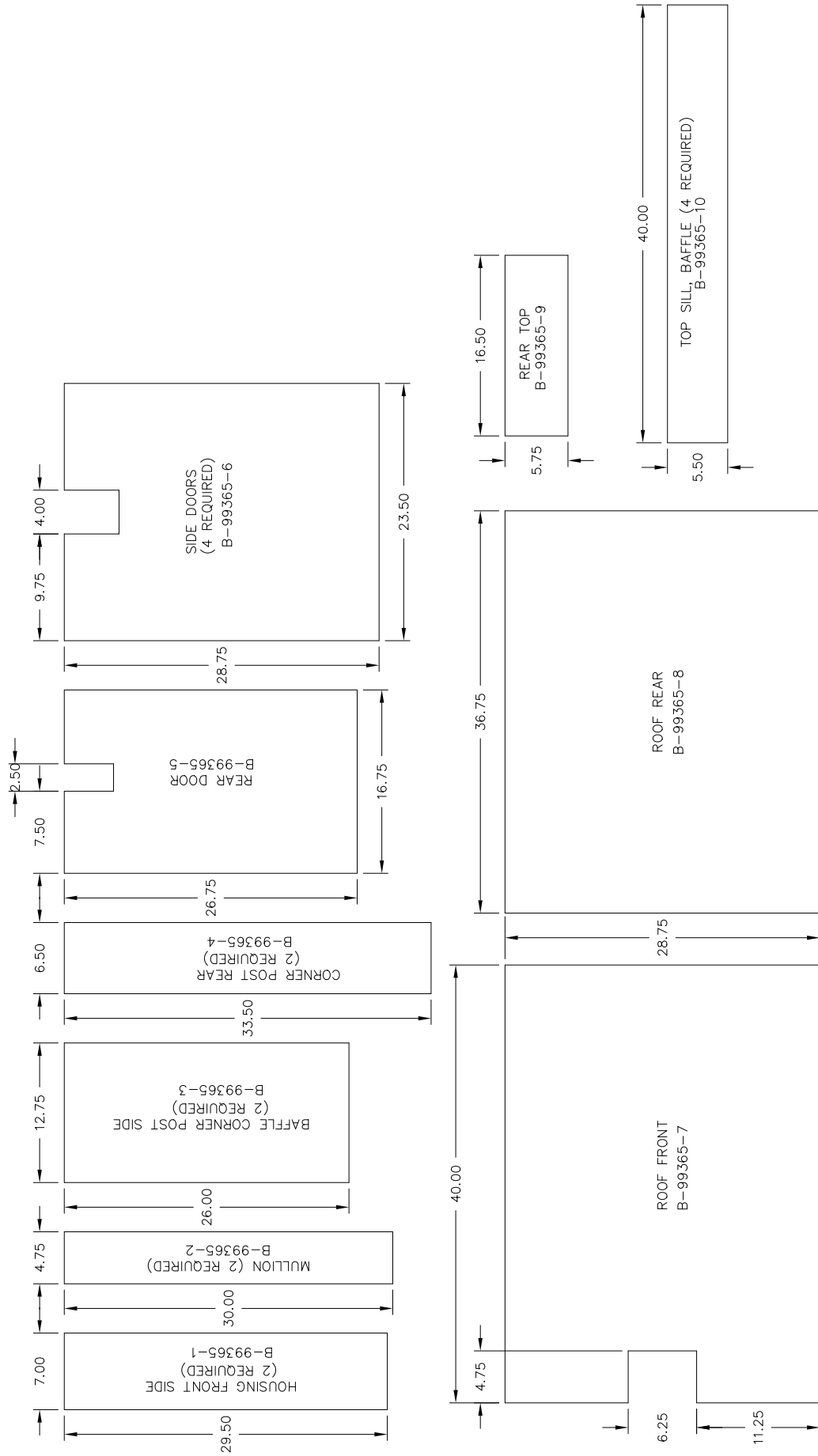
| REF # | PART NUMBER | QTY | DESCRIPTION |
|-------|-------------|-----|-------------------------|
| 1 | 93489-002 | 4 | 2 ½" Muffler Clamp |
| 2 | 80519-002 | 2 | Muffler |
| 3 | 99335-001 | 2 | Muffler Support |
| 4 | 99321-001 | 2 | Exhaust Tail Pipe |
| 5 | 99369-001 | 1 | Right Side Heat Shield |
| 6 | 99369-000 | 1 | Left Side Heat Shield |
| 7 | 99338-000 | 2 | Exhaust Clamp Bracket |
| 8 | 93489-003 | 4 | 2" Muffler Clamp |
| 9 | 99315-000 | 1 | Right Side Exhaust Pipe |
| 10 | 99422-000 | 1 | Exhaust Clamp |
| 11 | 99060-001 | 2 | Cover Plate |
| 12 | 99336-000 | 2 | Top Muffler Support |
| 13 | 99337-000 | 2 | Lower Muffler Support |
| 14 | 99316-001 | 2 | Muffler Inlet Pipe |
| 15 | 99421-000 | 1 | Exhaust Flange |
| 16 | 99314-000 | 1 | Left Side Exhaust Pipe |

HOUSING ASSEMBLY

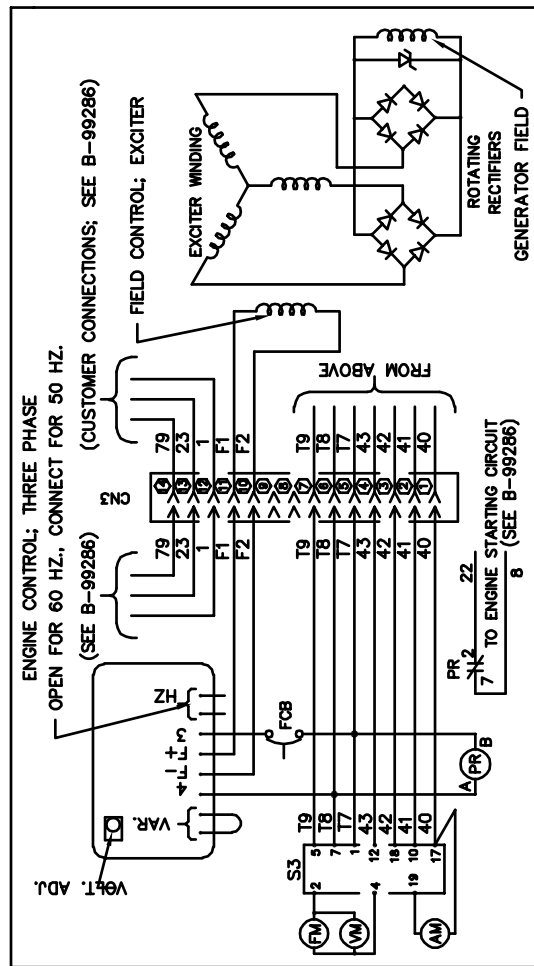
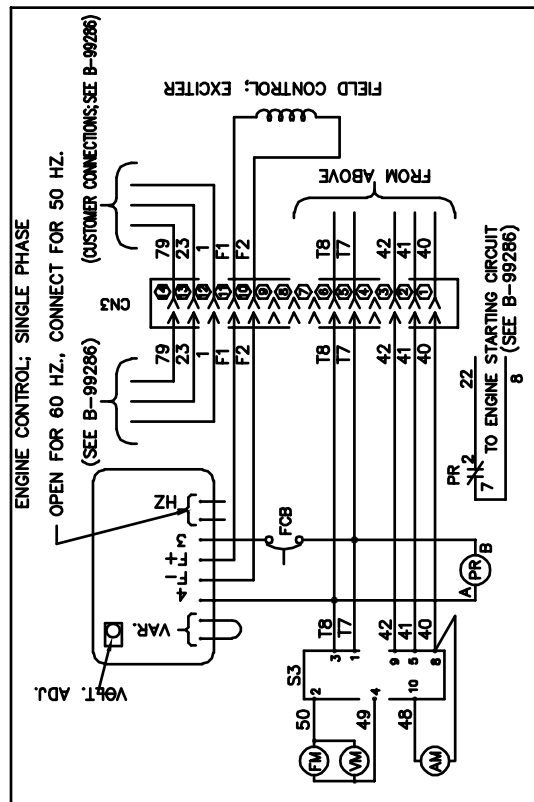


| REF # | PART NUMBER | QTY | DESCRIPTION |
|-------|-----------------|--------|--------------------------|
| 1 | 99329-001 | 1 | Right Side Extension |
| 2 | 62026-003 | 1 | Cover Plate |
| 3 | 62825-011 | 1 | Spacer |
| 4 | 99319-001 | 1 | Right Rear Corner Post |
| 5 | 99368-000 | 2 | Roof End |
| 6 | 99341-000 | 1 | Roof |
| 7 | 99379-000 | 1 | Housing Front Stiffener |
| 8 | 99334-000 | 1 | Housing Front Top |
| 9 | 99333-000 | 4 | Door Jam |
| 10 | 99325-001 | 1 | Sill |
| 11 | 99339-000 | 2 | Roof Brace |
| 12 | 99325-000 | 1 | Sill |
| 13 | 95229-004 | 5 | Door Latch |
| 14 | 99327-000 | 4 | Side Sill Baffle |
| 15 | 99326-000 | 1 | Rear Top Sill |
| 16 | 99320-000 | 2 | Rear Corner Post Baffle |
| 17 | 99340-000 | 2 | Housing Support |
| 18 | 15680-009 | 1 | Rear Door |
| 19 | 99319-000 | 1 | Left Rear Corner Post |
| 20 | 99330-001 | 1 | Left Hand Housing Mount |
| 21 | 99330-000 | 1 | Right Hand Housing Mount |
| 22 | 99323-000 | 2 | Mullion |
| 23 | 15680-008 | 4 | Door |
| 24 | 99060-000 | 6 | Cover Plate |
| 25 | 99324-000 | 1 | Housing Front |
| 26 | 99329-000 | 1 | Left Side Extension |
| 27 | 99300-001 | 1 | Left Base Extension |
| 28 | 99300-002 | 1 | Right Base Extension |
| 29 | 99060-001 | 2 | Cover Plate |
| 30 | 99378-000 | 2 | Housing Front Baffle |
| 31 | 99328-000 | 1 | Roof Support |
| NI | 62912-000 | 40 FT | ½" Foam Strip |
| NI | 92421-000 | 7.3 FT | 1.5" X 1.5" Foam Strip |
| NI | 99318-000 | 1 | Battery Brace |
| NI | Not Illustrated | | |

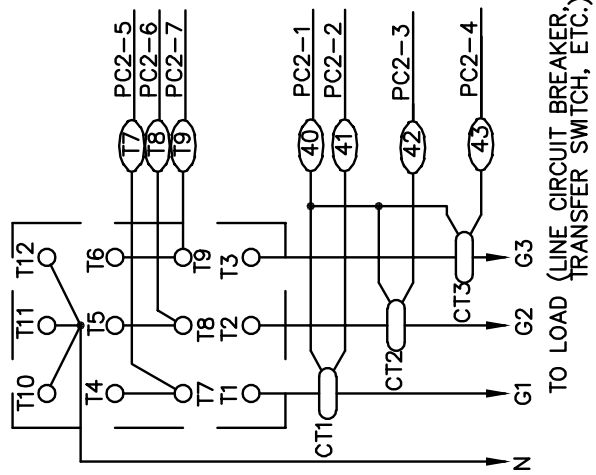
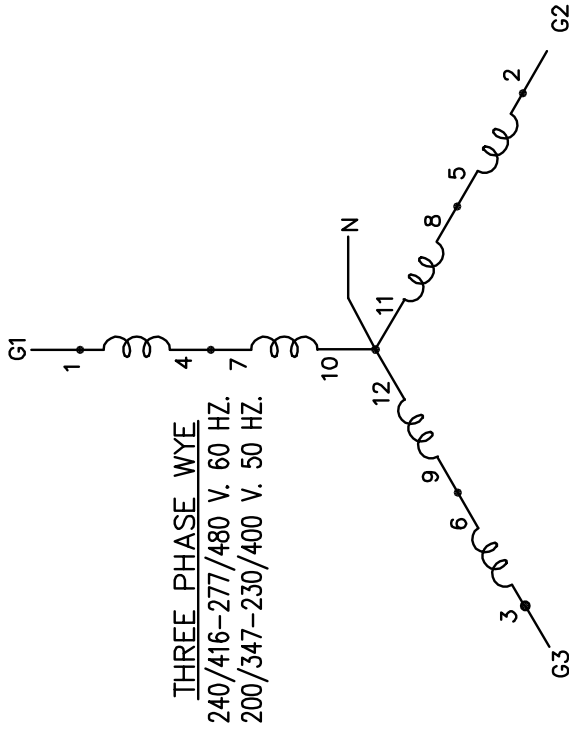
HOUSING FOAM KIT



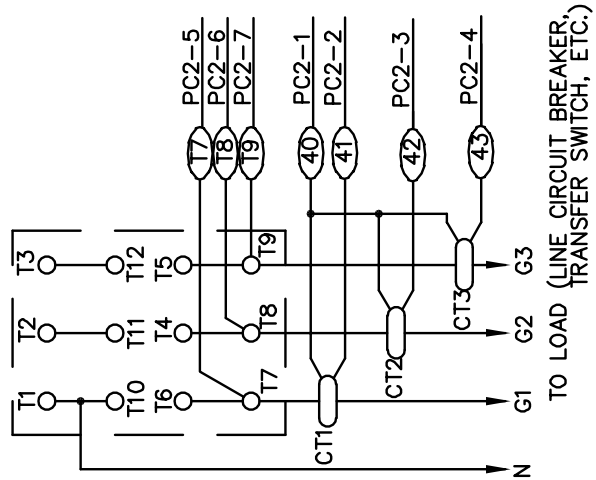
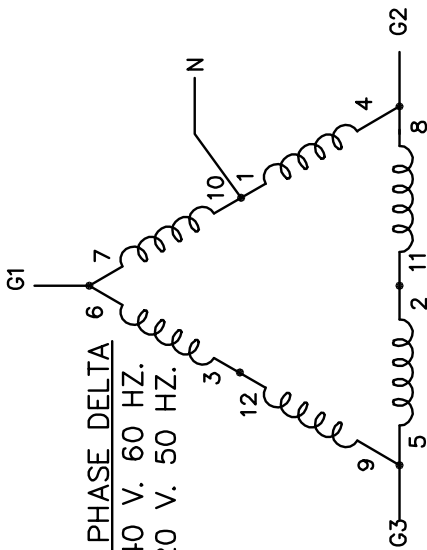
VOLTAGE REGULATOR WIRING



AC WIRING SCHEMATICS

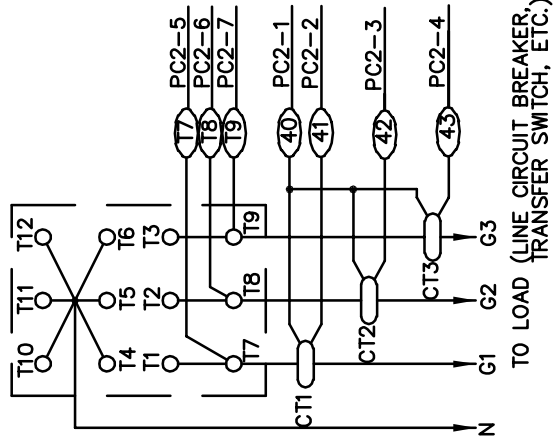
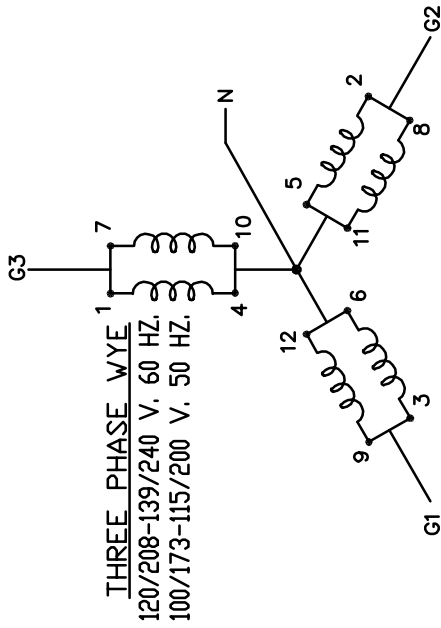


PSS70-17

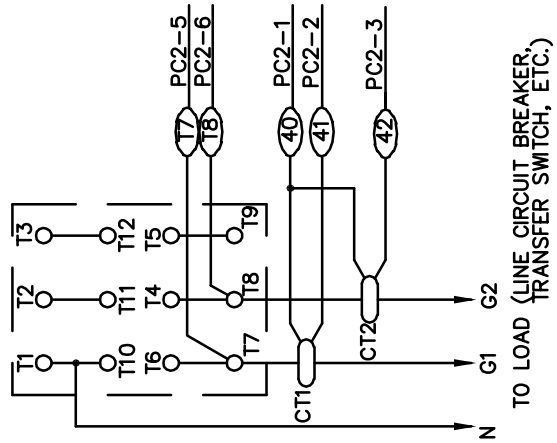
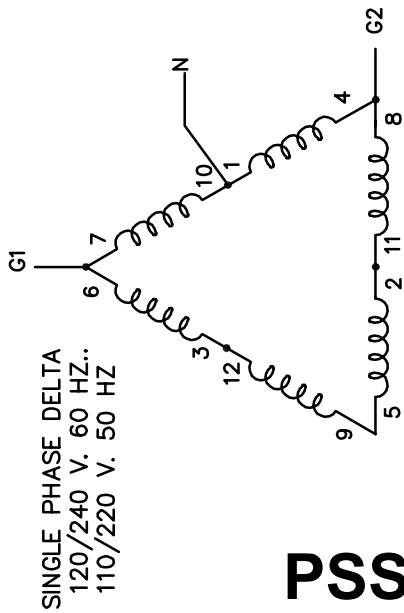


PSS70-18

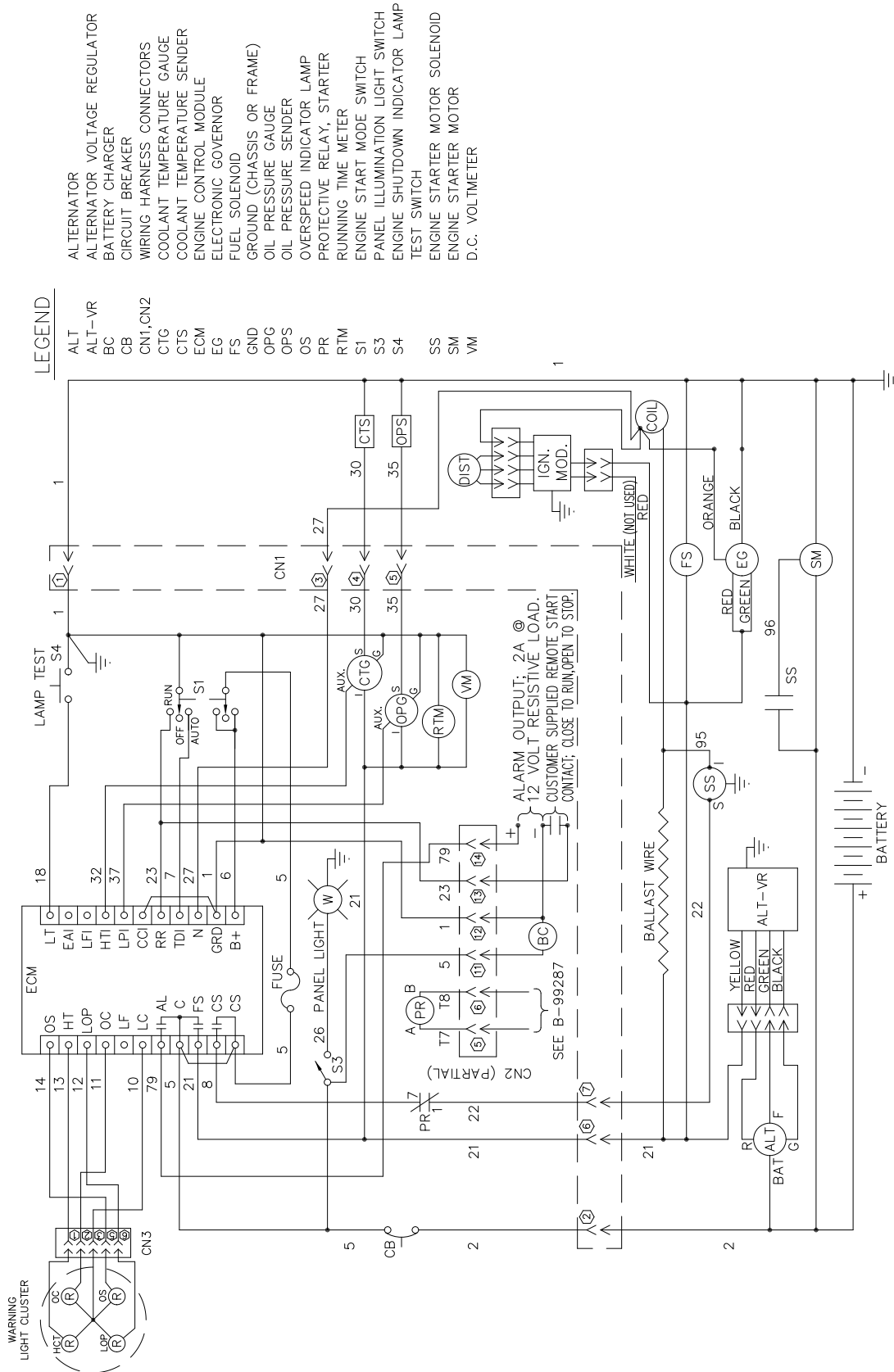
AC WIRING SCHEMATIC



PSS70-4



PSS70-3



DC SCHEMATIC

PSS70