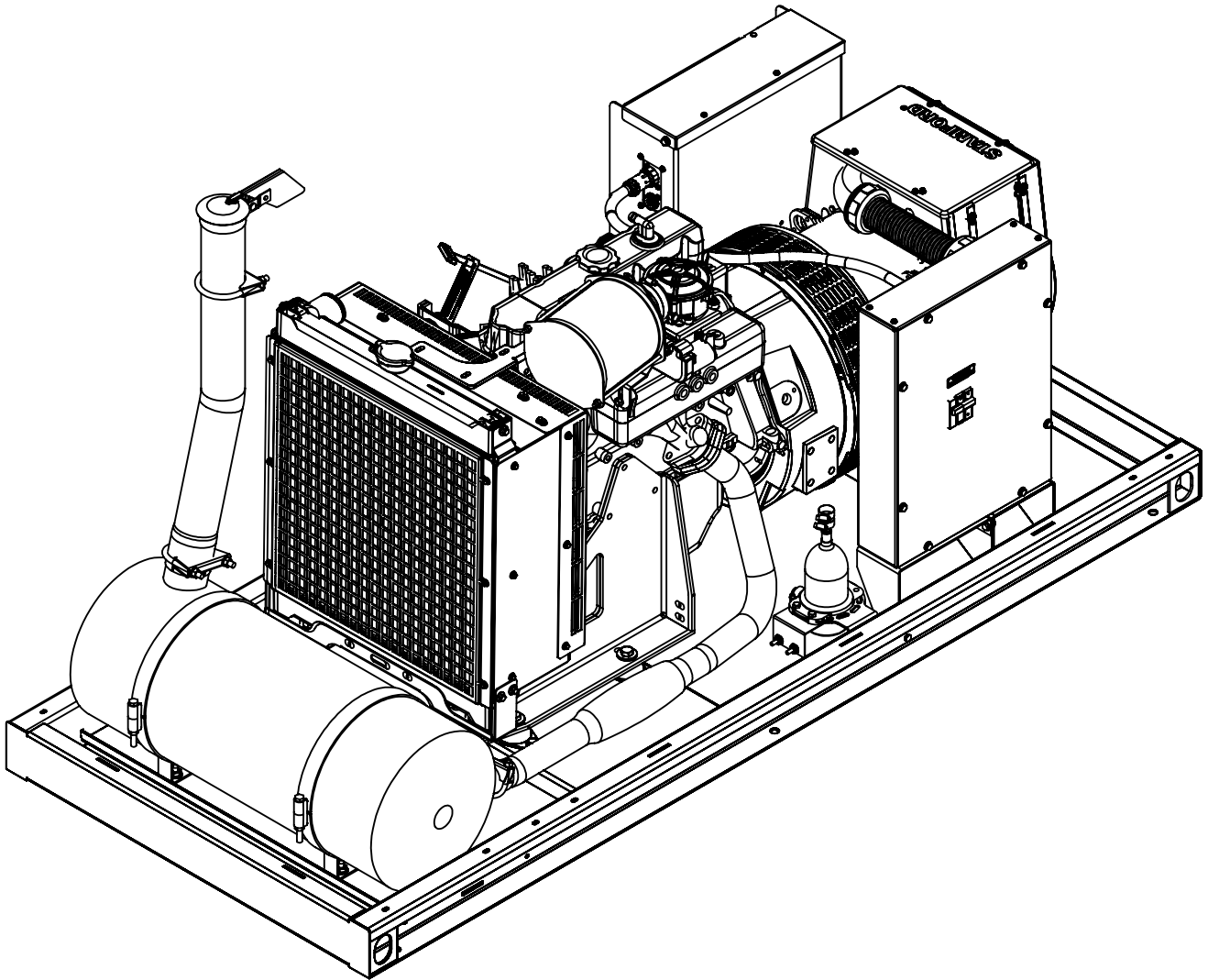




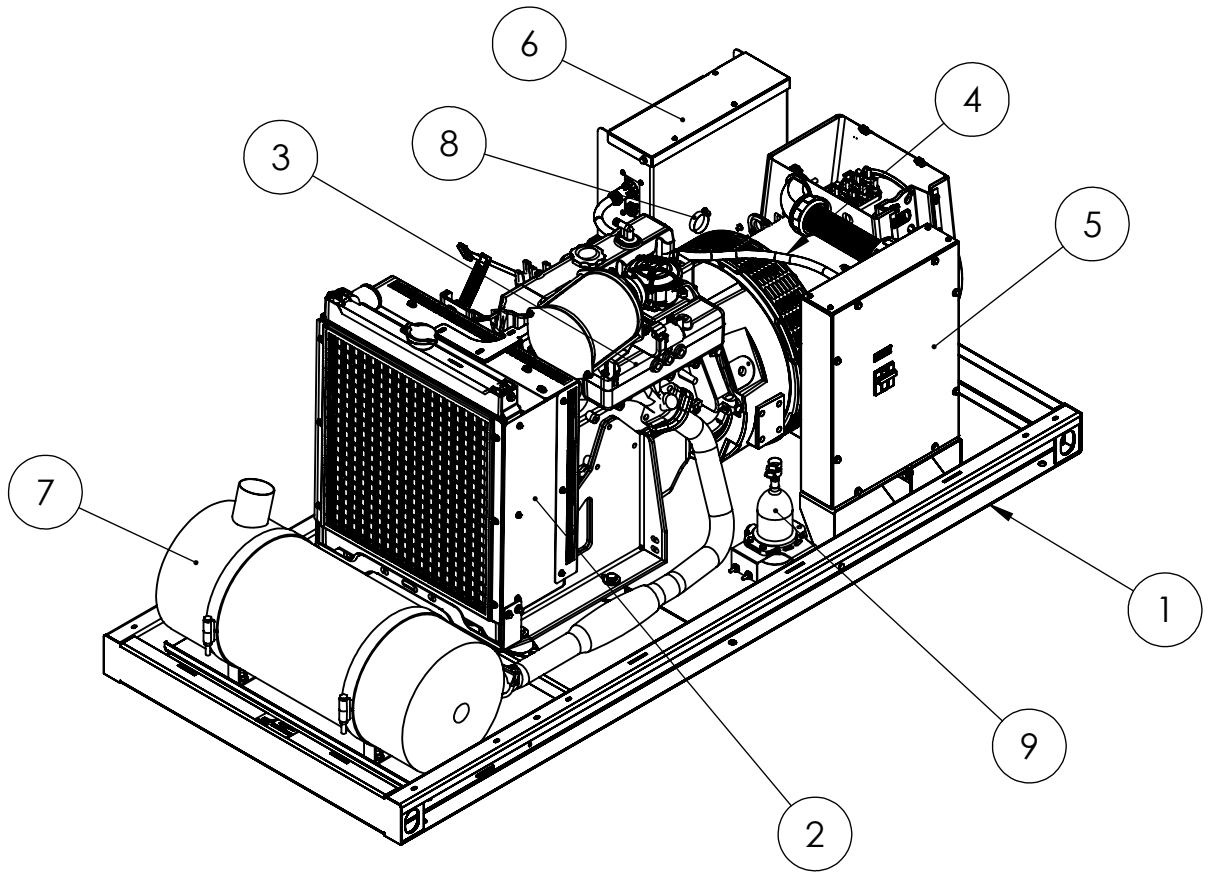
PSS21/F & PSS30/F Parts List

This manual covers a product family with many variations of voltages and accessories. Not all options in the parts lists were included in each model. Contact WINCO service with your serial number if you are not sure which options were included with your generator.



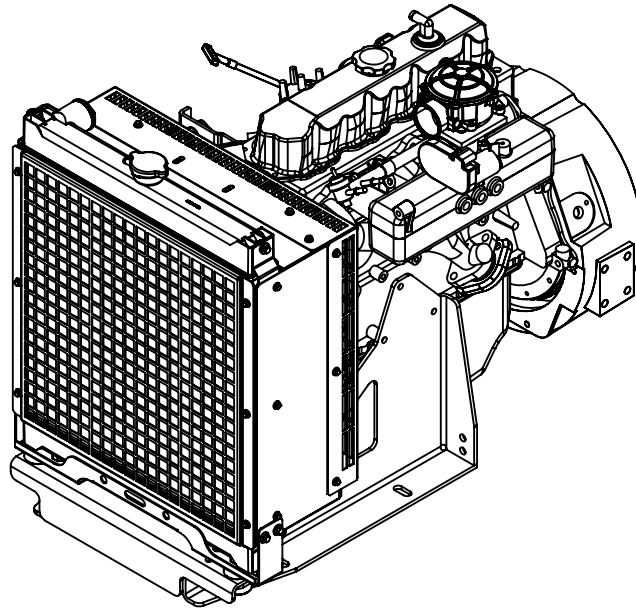
WINCO Service
Phone: 507-357-6831
Email: service@wincogen.com
www.wincogen.com

POWER-PAK OPEN SKID



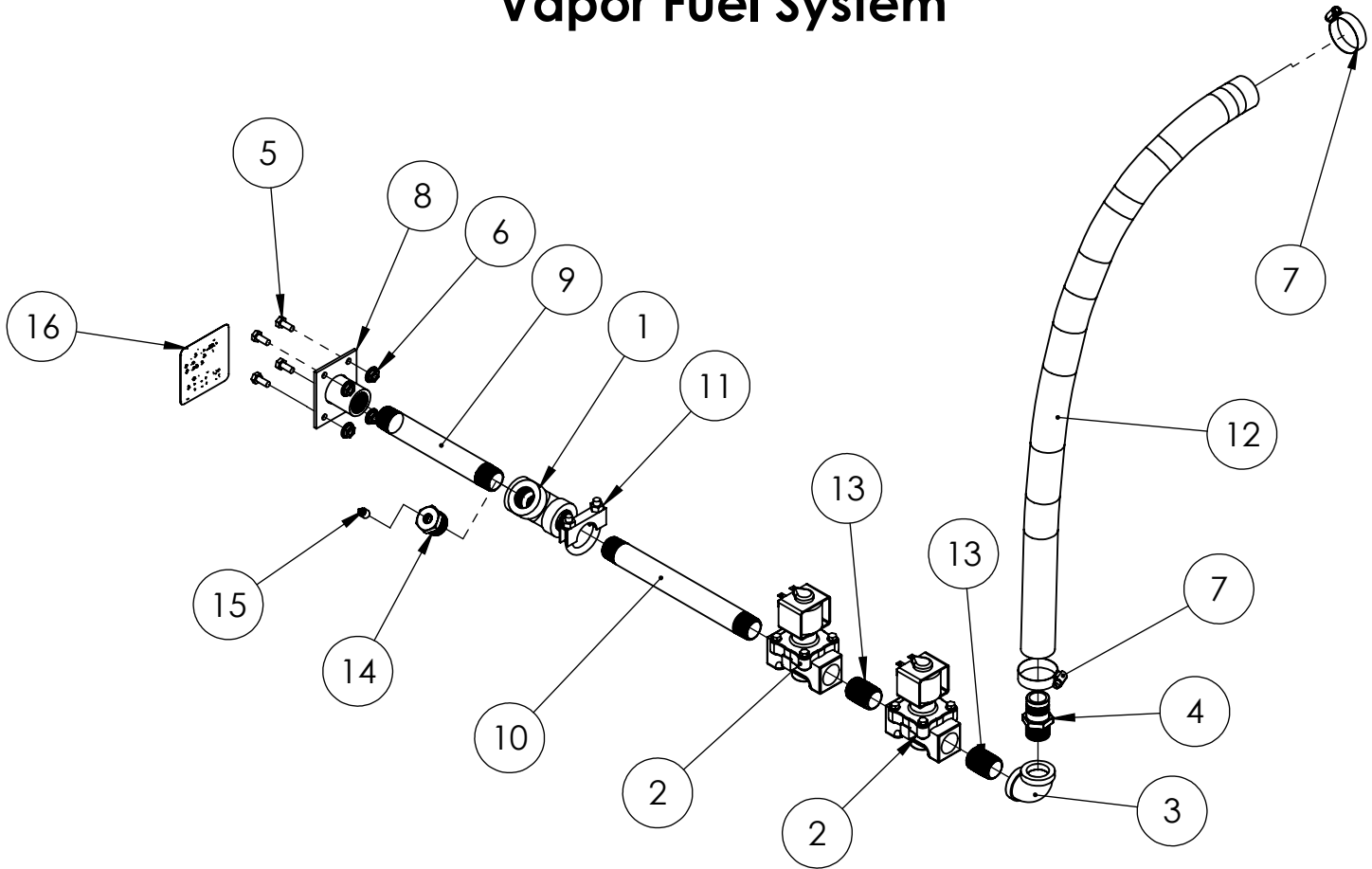
ITEM NO.	PartNo	DESCRIPTION	QTY.
1	99382-301	PSS21/30 BASE ASSEMBLY	1
2	99382-302	PSS21/30 ENGINE-GEN ASSEMBLY	1
3	350002-33	ZENITH 2.8	1
4	350023-1	GEN END, S1L2-K1, 38.4 KW @ 125C, WDG#711, SAE 4-10, UL1004	1
5	99382-303	PSS30 CELL 3	1
6	99382-304	CELL 4 ASSEMBLIES	1
7	99687-025	EXHAUST SYSTEM OPEN SKID	1
8	99362-022	FUEL SYSTEM	1
9	99382-305	BLOCK HEATER AND ACCESORIES	1
ITEMS BELOW NOT PICTURED			
11	97813-000	DECAL-WARNING CYCLE CRANK	2
12	63941-001	DECAL -HOT SURFACES	3
13	60710-097	TAG OIL WARNING	1
14	63941-003	DECAL-WARNING NO SPARK	1
15	63941-005	DECAL-CIRCUIT REMAINS ENERGIZED	1
16	63941-103	DECAL-WARNING NO SPARK	1
17	352020-13	BATTERY CHARGER KIT 12V 10 AMP DSE NFPA	1
18	16505-011	NAME PLATE	1
19	16506-004	NAME PLATE OVERLAY	1

ENGINE



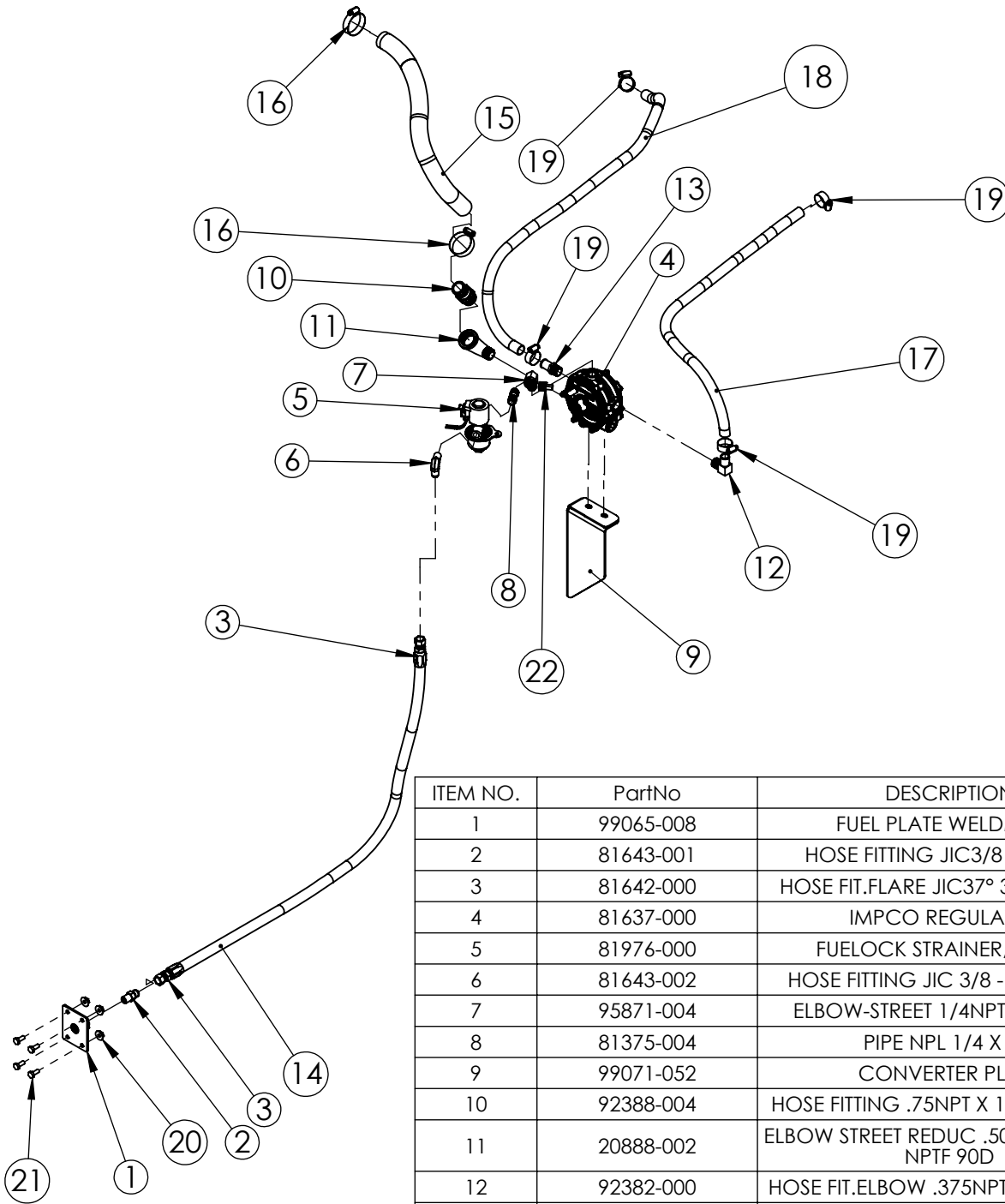
ITEM	PART	DESCRIPTION	QTY
1	5-100	OIL FILTER	1
2	5-101	SPARK PLUGS	4
3	97294-008	AIR FILTER	1
4	5-102	BELT, FAN/ALTERNATOR	1
5	5-103	HOSE, UPPER RADIATOR	1
6	5-104	HOSE, LOWER RADIATOR	1
CONTACT WINCO SERVICE FOR FULL ENGINE PARTS SUPPORT.			

Vapor Fuel System



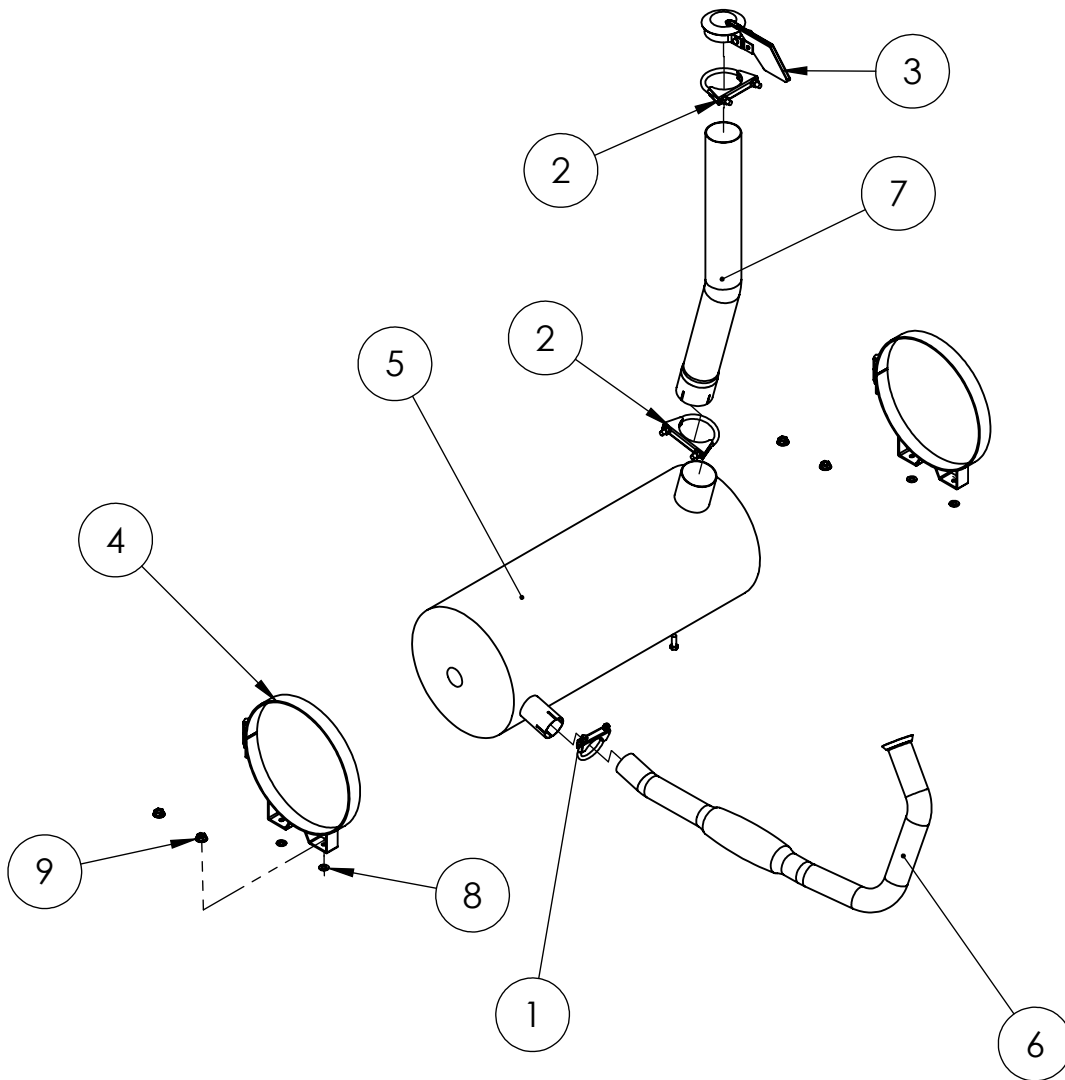
ITEM NO.	PartNo	DESCRIPTION	QTY.
1	94907-000	PIPE TEE 3/4 X 3/4 X3/4 NPT	1
2	42942-000	SOLENOID, GAS VALVE, 12VDC, 3/4NPT	2
3	50244-000	90DEG ELBOW 3/4NPT	1
4	92388-004	HOSE FITTING .75NPT X 1" HOSE BARB	1
5	65000-000	.25-20X.625 SS HHCS	4
6	16248-000	.25-20 FLANGE NUT	4
7	81018-004	HOSE CLAMP 1.75-.8125	2
8	99065-007	FUEL WELDMENT .75 NPT	1
9	54074-010	PIPE NIPPLE 3/4 X 7"	1
10	54074-011	3/4 X 9" PIPE NIPPLE	1
11	93489-018	MUFFLER CLAMP 1.25" X 5/16" ZINC	1
12	49409-001	HOSE 1" ID 36" VAPOR	1
13	22626-000	PIPE NPL 3/4NPTXCLOSE (1-1/8)	2
14	63788-001	HEX REDUCER BUSHING 3/4 NPT M X 1/8 NPT F	1
15	644-000	PIPE PLUG .125	1
16	15210-012	FUEL PRESSURE DECAL	1

Liquid-Withdrawl Fuel System



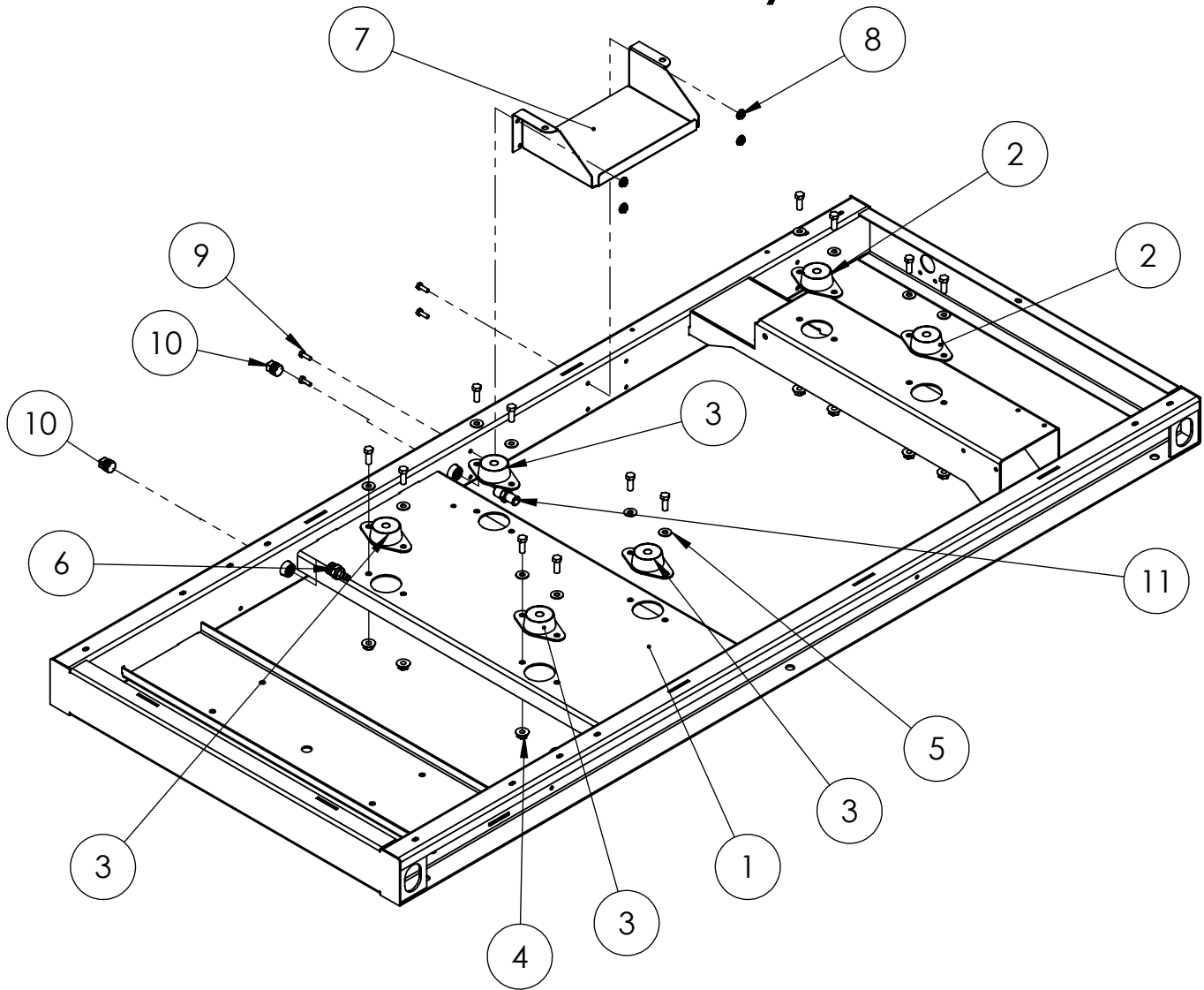
ITEM NO.	PartNo	DESCRIPTION	QTY.
1	99065-008	FUEL PLATE WELDMENT	1
2	81643-001	HOSE FITTING JIC3/8 - 1/4 NPT	1
3	81642-000	HOSE FIT.FLARE JIC37° 3/8(9/16-18)	2
4	81637-000	IMPCO REGULATOR	1
5	81976-000	FUELOCK STRAINER, 12VDC	1
6	81643-002	HOSE FITTING JIC 3/8 - 1/4 NPT 90	1
7	95871-004	ELBOW-STREET 1/4NPT 90D STEEL	1
8	81375-004	PIPE NPL 1/4 X 1.5	1
9	99071-052	CONVERTER PLATE	1
10	92388-004	HOSE FITTING .75NPT X 1" HOSE BARB	1
11	20888-002	ELBOW STREET REDUC .500 NPTM X .75 NPTF 90D	1
12	92382-000	HOSE FIT.ELBOW .375NPT X .625 HOSE	1
13	92388-000	HOSE FIT .375NPT X .625 HOSE	1
14	81640-000	HOSE 5/16 ID RUBBER 40' LONG	1
15	49409-002	HOSE 1UD 18.5 IN LONG	1
16	81018-004	HOSE CLAMP 1.75-.8125	2
17	93689-001	HOSE 5/8" ID 28" LONG	1
18	93689-001	HOSE 5/8" ID 32" LONG	1
19	81018-005	HOSE CLAMP 1.0625-.500	4
20	16248-000	.25-20 FLANGE NUT	4
21	65000-000	.25-20X.625 SS HHCS	4
22	48602-004	TERMINAL MALE 16-14 AWG .250 TAB	2

Exhaust System Sound-Pak (Housed) and Power-Pak (Open)



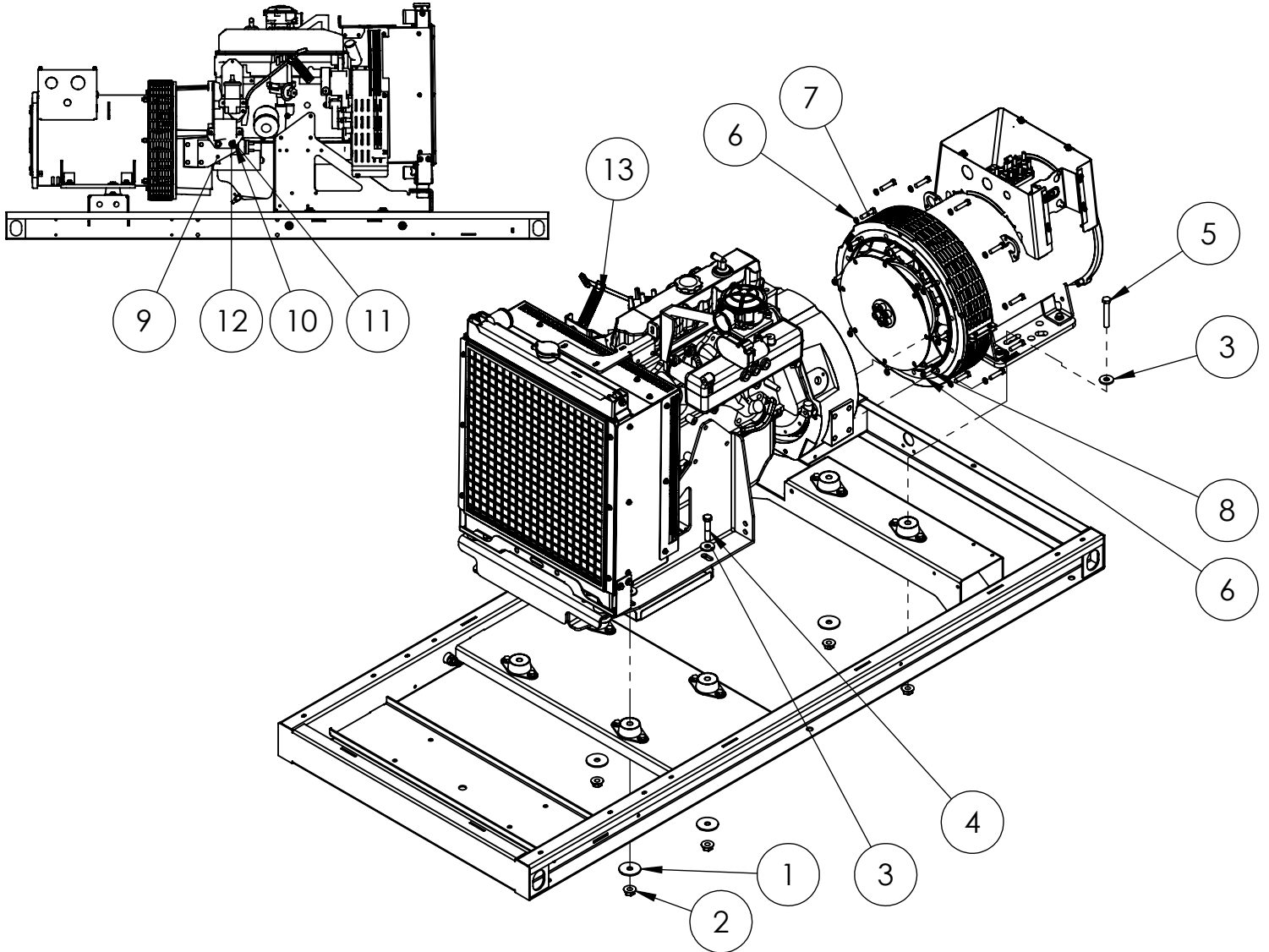
ITEM NO.	PartNo	DESCRIPTION	QTY.
1	93489-011	MUFFLER CLAMP 2.25"	1
2	93489-001	MUFFLER CLAMP 3" 3/8"	2
3	53111-008	3" RAIN CAP	1
4	350264-3	EXHAUST CLAMP 12"	2
5	80519-016	CRITICAL GRADE SILENCER	1
6	99298-038	FLEX PIPE	1
7	99298-039	TAIL PIPE	1
8	20604-000	3/8 WASHER	4
9	16250-000	.375-16 FLANGE NUT	4
10	91658-001	.375 - 16 X1 HHB	4

Base Assembly



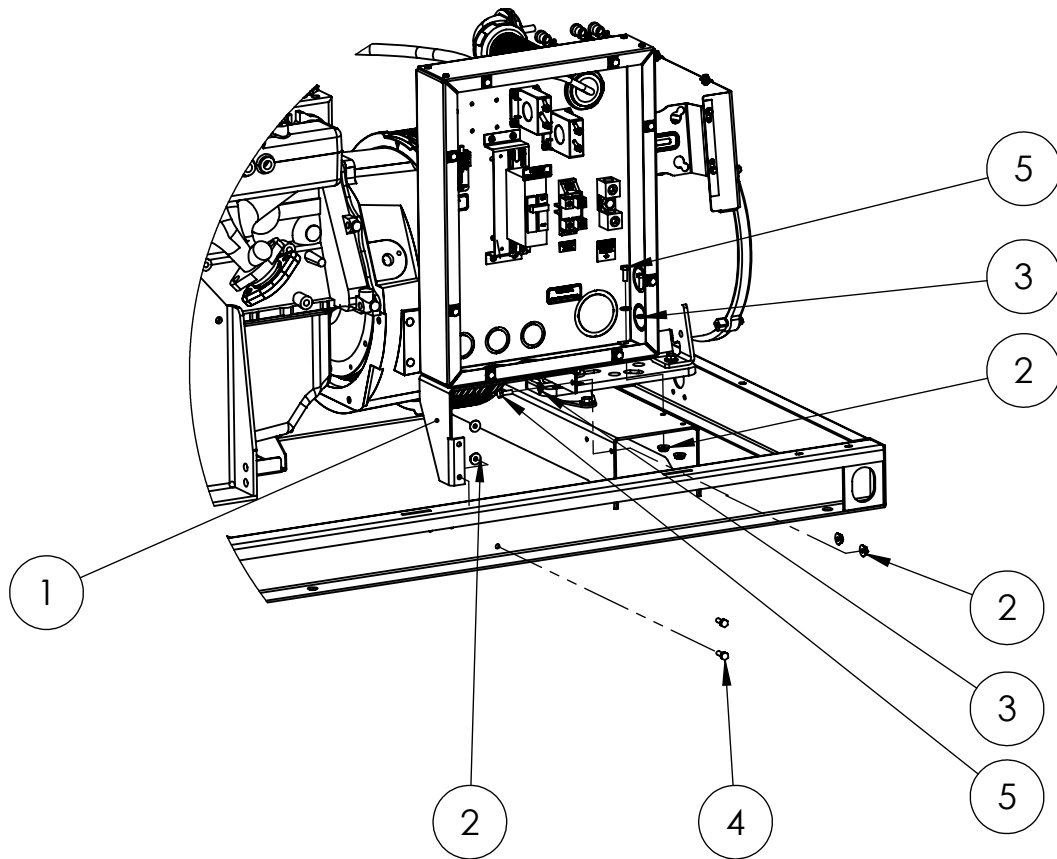
ITEM NO.	PartNo	DESCRIPTION	QTY.
1	99309-140	WELDED BASE	1
2	98807-004	SHOCKMOUNT GREEN/GOLD	2
3	98807-003	SHOCKMOUNT RED/GOLD	4
4	16250-000	.375-16 FLANGE NUT	12
5	526-000	WASHER ID .375 OD .890	12
6	94319-008	HOSE FIT. .500-14NPT X .375 HOSE BARB	1
7	99317-006	BATTERY TRAY	1
8	16248-000	.25-20 FLANGE NUT	4
9	65000-001	.25-20X.75 SS HHCS	4
10	93084-000	PIPE PLUG .50 GALV	2
11	92388-001	HOSE FIT 1/2 NPT X 5/8 HOSE	1
12	91658-001	.375 - 16 X1 HHB	12

Engine and Generator Assembly



ITEM NO.	PartNo	DESCRIPTION	QTY.
1	98806-002	WASHER SNUBBING 2.13 X .532 X .134THK	6
2	16248-001	.5-13 FLANGE NUT	6
3	21867-002	WASHER .5 X 1.375 X .146	6
4	57580-001	HHCS 1/2-13X2-1/2 GR5	4
5	57580-007	HHCS .5-13 X 3	2
6	481-001	LOCKWASHER 3/8 SPLIT BLACK	20
7	96000-004	HEX HEAD BOLT 3/8-16 X 1.5	12
8	96000-002	.375-16X1 HHB	8
9	99071-051	FUSE BOX PLATE	1
10	21867-001	FLAT WASHER .51 X .88 X .05	4
11	92242-000	NUT HEX .500-13 NYLOCK	2
12	1516-000	.5-12X1.25 HHB	2
13	60710-097	TAG OIL WARNING	1

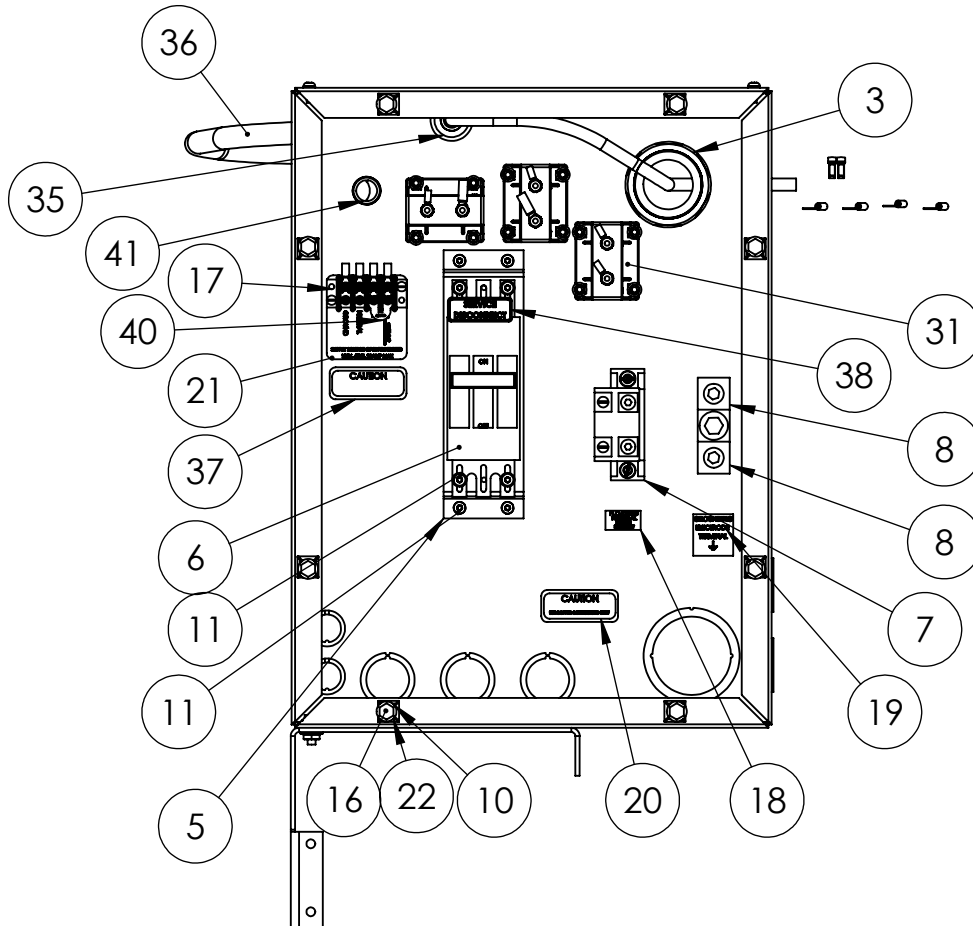
Circuit Breaker Box Installation



ITEM NO.	PartNo	DESCRIPTION	QTY.
1	SEE TABLE	CB BOX ASSEMBLY	1
2	16248-000	.25-20 FLANGE NUT	6
3	512-000	.25 WASHER	4
4	65000-001	.25-20X.75 SS HHCS	2
5	466-000	.25-20X.75 HHB	4

MODEL	CB ASY
PSS21-3	99836-120
PSS21-4 OR -17	99836-121
PSS21-18	99836-122
PSS30-3	99836-137
PSS30-4 OR -17	99836-134
PSS30-18	99836-136

Circuit Breaker Box Components

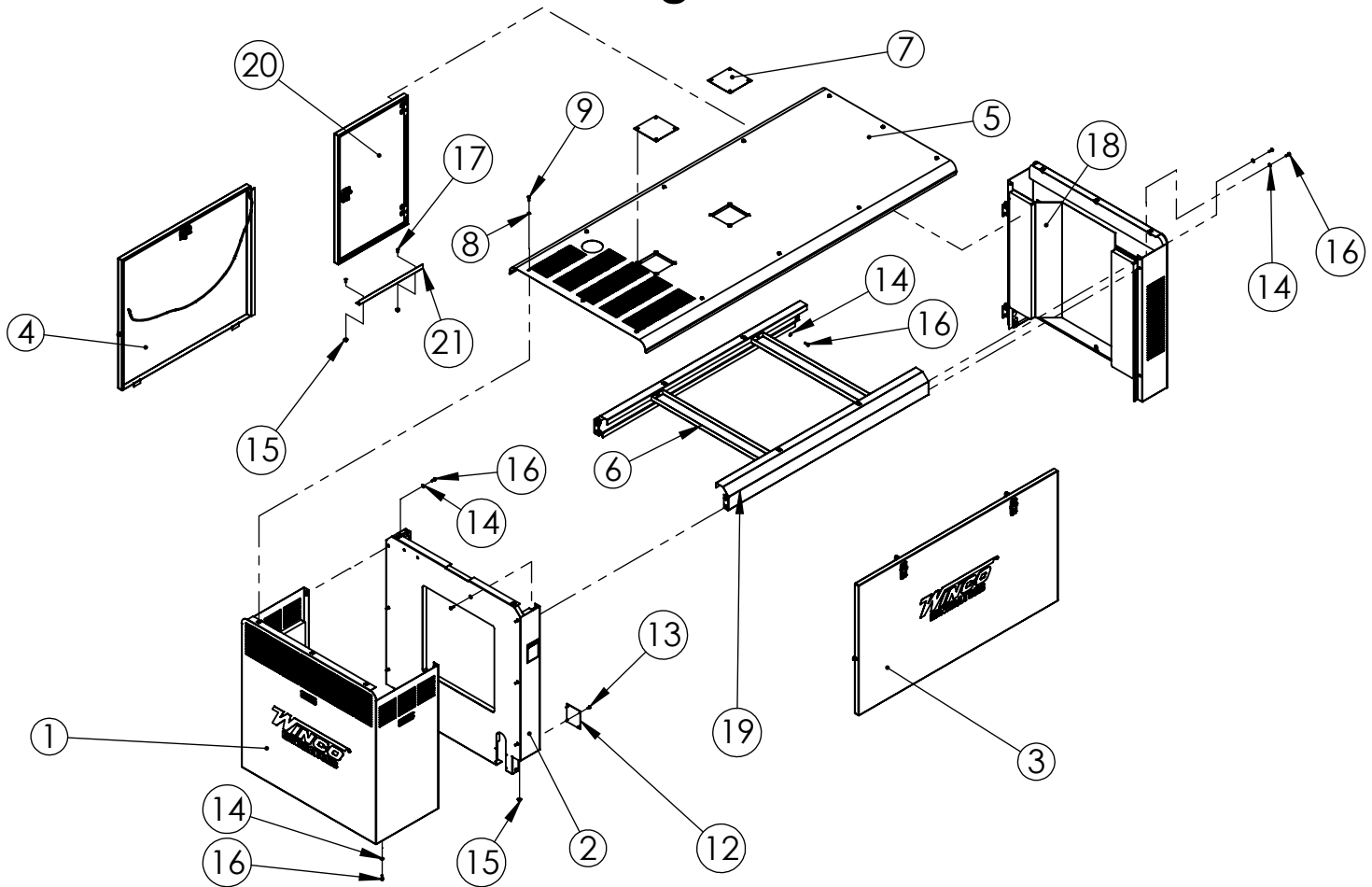


MODEL	CB	CB COVER	RISER	CT'S	AC HARNESS
PSS21-3	58805-005	99826-037	92072-005	80126-003	99347-020
PSS21-4 OR17	82584-002	99826-033	92072-005	80126-002	99347-019
PSS21-18	81097-052	99826-036	N/A	80126-001	
PSS30-3	58805-006	99826-037	92072-005	80126-003	99347-020
PSS30-4 OR17	82584-004	99826-033	92072-005	80126-002	99347-019
30-18	81097-002	99826-036	N/A	80126-001	

Circuit Breaker Box Parts List

ITEM NO.	PartNo	DESCRIPTION	QTY.
1	99826-032	CB BOX	1
2	16522-001	2 IN FLEXIBLE CONDUIT FITTING	1
3	16522-000	2" FLEXIBLE CONDUIT STRAIGHT BLACK	1
4	99826-034	CB BOX SUPPORT	1
5	SEE TABLE	CB RISER	SEE TABLE
6	SEE TABLE	CIRCUIT BREAKER	1
7	350124-3	NEUTRAL ASSEMBLY 100 AMP	1
8	58060-000	TERMINAL GROUND LUG	2
9	16248-000	.25-20 FLANGE NUT	4
10	512-000	.25 WASHER	10
11	21698-001	TORX PAN HEAD SCREW #10	12
12	96286-002	FLAT WASHER NYLON	8
13	526-000	5/16 FLAT WASHER	2
14	47136-000	HEX NUT .3125-18 NYLOK	1
15	580-000	5/16-18X1.25	1
16	65000-001	.25-20X.75 SS HHCS	10
17	80623-008	TERMINAL BLOCK, 4PT, 20A	1
18	16501-000	DECAL-FLOATING NEUTRAL	1
19	16499-000	UL-DECAL-GROUNDING-WHITE	1
20	16503-000	DECAL-COPPER CONDUCTORS ONLY	1
21	64576-020	DECAL-GFCI PROTECTED UTILITY 4P	1
22	92495-000	.25-20 TINNEMAN	8
23	SEE TABLE	CB COVER	1
24	15376-001	PUSH NUT BOLT RETAINER	8
25	95985-000	NUT HEX #8-32 NYLOK	2
26	511-000	#8 FLAT WASHER	2
27	7614-000	RHMS 8-32 X .75	2
28	16523-007	CONDUIT 9.75" LONG	1
29	99830-047	CB WIRING	1
30	22370-006	TERMINAL SPADE 16-14AWG #5-#6	6
31	SEE TABLE	CT PANEL MOUNT	SEE TABLE
32	598-000	#10 WASHER	28
33	64872-000	SOC.HCS 10-24 X 3/4 BLK	12
34	5315-000	NUT HEX 10-24 NYLON	12
35	23917-000	GROMMET .6875ID X 1	1
36	SEE TABLE	AC HARNESS	1
37	63941-005	DECAL-CIRCUIT REMAINS ENERGIZED	1
38	16502-001	DECAL-AC POWER DISCONNECT	1
39	21253-000	RHMS 1/4-20X .75	2
40	80623-013	2 POLE TERMINAL BLOCK JUMPER	1
41	93073-000	CONNECTOR, BOX, 1/2 INCH	1

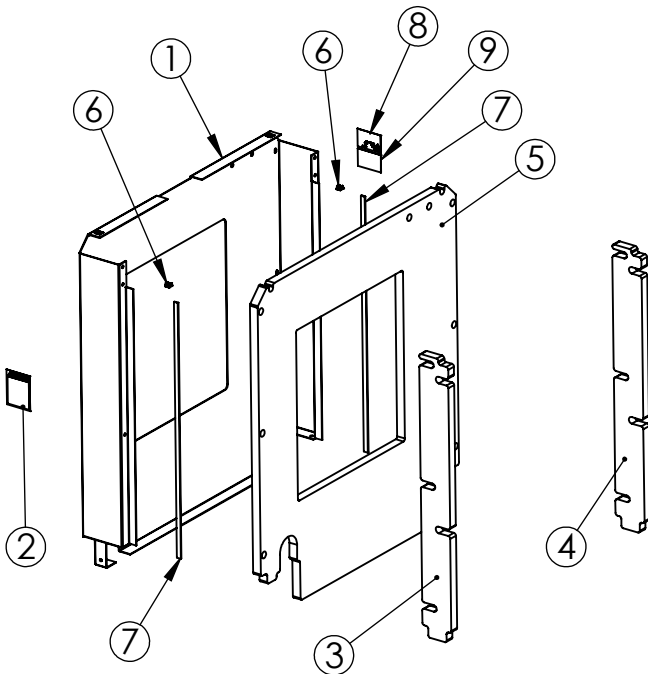
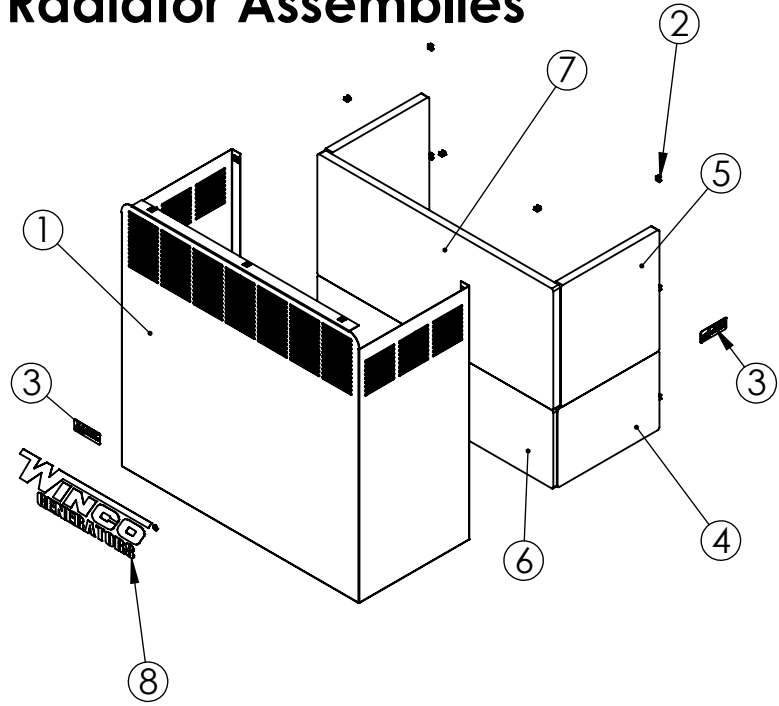
Housing Assemblies



ITEM NO.	PartNo	DESCRIPTION	QTY.
1	99071-057	SNORKLE ASSEMBLY	1
2	99071-056	RAD HOUSING ASSEMBLY	1
3	99100-017	LEFT PANEL WITH FOAM	1
4	99100-018	RIGHT SIDE PANEL WITH FOAM	1
5	99515-033	ROOF WITH FOAM	1
6	99225-007	ROOF SUPPORT	2
7	99060-014	ROOF COVER	2
8	65003-000	SS LOCK WASHER ID.25 OD.475 TH.07	12
9	65000-001	.25-20X.75 SS HHCS	12
10	526-000	5/16 FLAT WASHER	4
11	16446-000	M8-1.25 NYLOCK	4
12	99060-015	EXHAUST COVER	1
13	21698-001	TORX PAN HEAD SCREW #10	4
14	512-000	.25 WASHER	33
15	16248-000	.25-20 FLANGE NUT	9
16	466-000	.25-20X.75 HHB	33
17	94980-001	THREAD STUD .25-20X.625	2
18	99100-025	REAR HOUSING	1
19	99078-125	SIDE SILL ASSEMBLY	2
20	15680-032	DOOR ASSEMBLY	1
21	99333-020	DOOR STOP	1

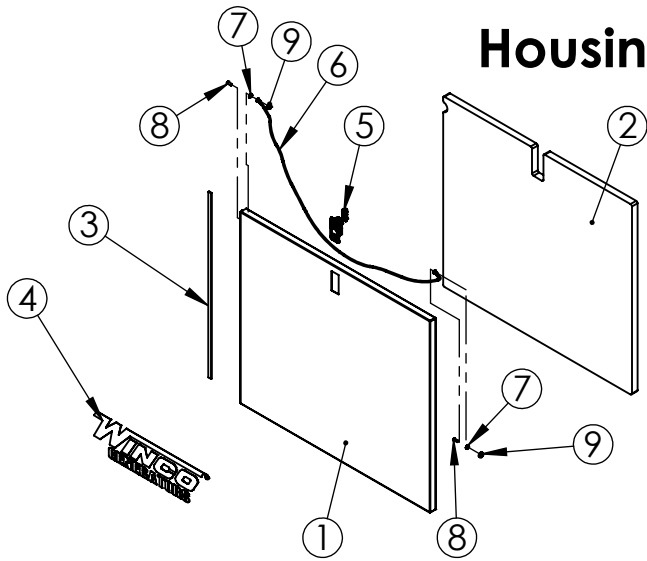
Housing Snorkle and Radiator Assemblies

ITEM NO.	PartNo	DESCRIPTION	QTY.
1	99071-057	HOUSING FRONT	1
2	92495-000	.25-20 TINNEMAN	13
3	63941-001	DECAL -HOT SURFACES	3
4	99393-162	SNORKLE BOTTOM SIDE	2
5	99393-164	SNORKLE TOP SIDE	2
6	99393-161	SNORKLE BOTTOM	1
7	99393-163	SNORKLE FRONT TOP	1
8	98313-001	WINCO LOGO	1



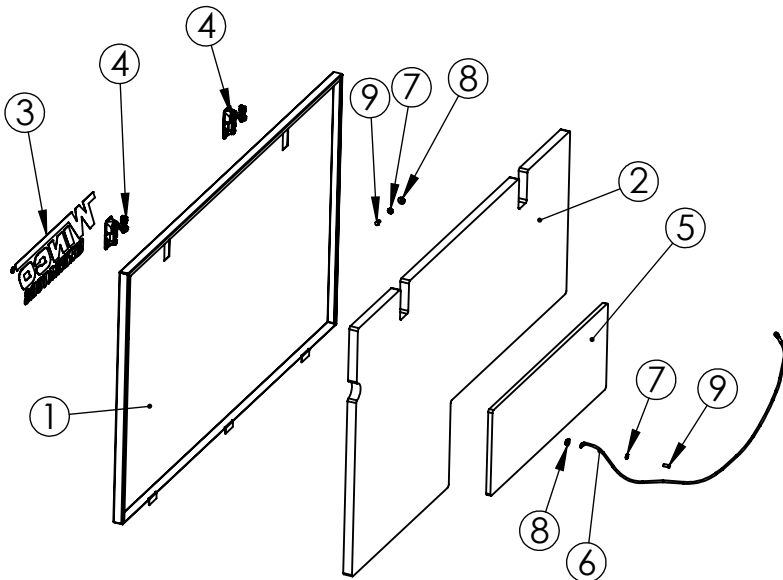
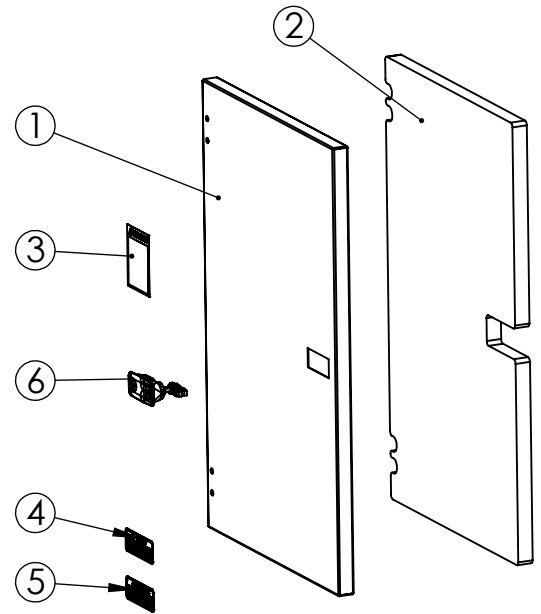
ITEM NO.	PartNo	DESCRIPTION	QTY.
1	99071-056	RAD HOUSING	1
2	97813-000	DECAL-WARNING CYCLE CRANK	1
3	99393-167	RAD SIDE FOAM LEFT	1
4	99393-166	RAD SIDE FOAM	1
5	99393-165	RAD HOUSING FOAM	1
6	92495-000	.25-20 TINNEMAN	2
7	62912-000	.500 X .125 FOAM 29.25 LONG	2
8	15209-002	DECAL-DANGER CARBON MONOXIDE	1
9	15209-102	DECAL-DANGER CARBON MONOXIDE	1

Housing Panels and Door



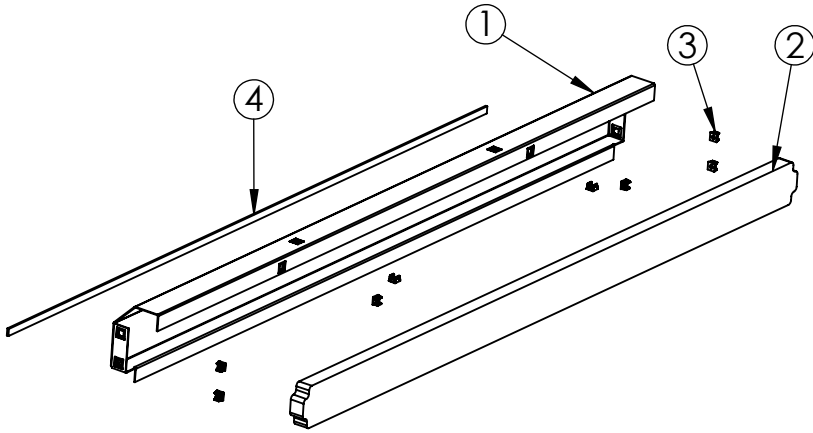
ITEM NO.	PartNo	DESCRIPTION	QTY.
1	99100-018	RIGHT SIDE PANEL	1
2	99393-169	RIGHT SIDE PANEL FOAM	1
3	62912-000	FOAM STRIP 28 7/16"	1
4	98313-001	WINCO LOGO	1
5	95229-004	LATCH LIFT AND TURN	1
6	9769-173	LEAD WIRE ASSY	1
7	4516-000	LOCKWASHER 1/4 EXTERNAL TOOTH	2
8	94980-001	THREAD STUD .25-20X.625	2
9	16248-000	.25-20 FLANGE NUT	2

ITEM NO.	PartNo	DESCRIPTION	QTY.
1	15680-032	DOOR	1
2	99393-171	DOOR FOAM	1
3	97813-000	DECAL-WARNING CYCLE CRANK	1
4	63941-003	DECAL-WARNING NO SPARK	1
5	63941-103	DECAL-WARNING NO SPARK	1
6	95229-004	LATCH LIFT AND TURN	1



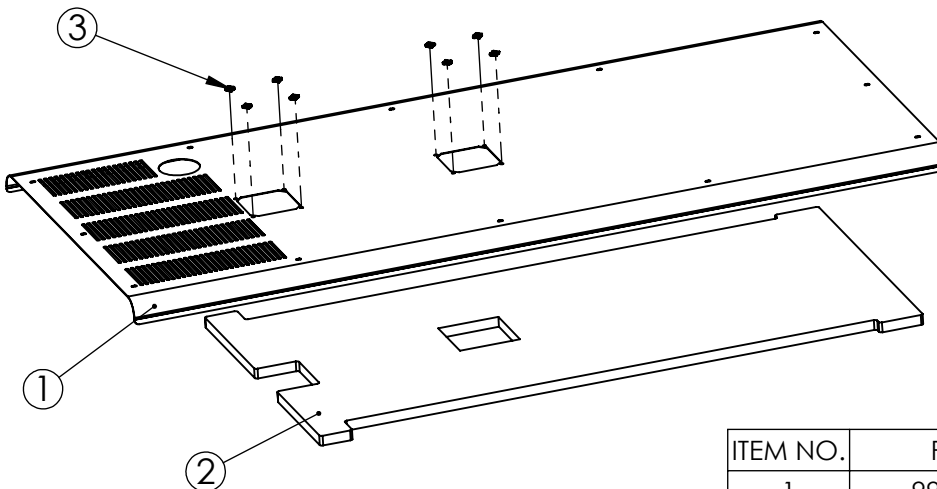
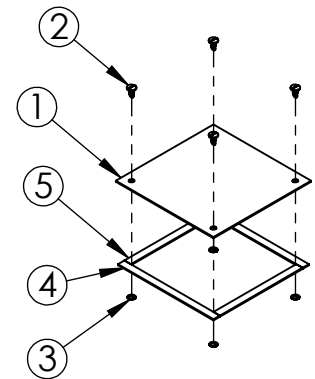
ITEM NO.	PartNo	DESCRIPTION	QTY.
1	99100-017	LEFT SIDE PANEL	1
2	99393-170	LEFT SIDE PANEL FOAM	1
3	98313-001	WINCO LOGO	1
4	95229-004	LATCH LIFT AND TURN	2
5	99393-182	SIDE PANEL HEAT FOAM	1
6	9769-174	LEAD WIRE ASSY	1
7	4516-000	LOCKWASHER 1/4 EXTERNAL TOOTH	2
8	16248-000	.25-20 FLANGE NUT	2
9	94980-001	THREAD STUD .25-20X.625	2

Side Sill and Roof Components



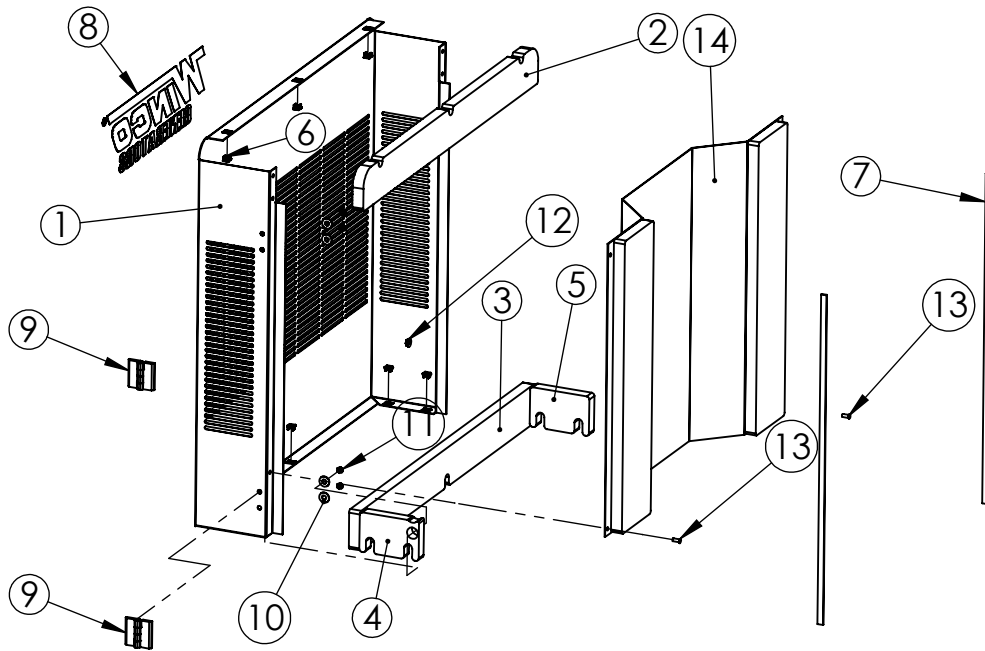
ITEM NO.	PART NUMBER	DESCRIPTION	QTY.
1	99078-125	SIDE SILL	1
2	99393-181	SS FOAM	1
3	92495-000	.25-20 TINNERMAN	8
4	62912-000	.500 X .125 FOAM 50.125 LONG	1

ITEM NO.	PartNo	DESCRIPTION	QTY.
1	99060-014	ROOF COVER	1
2	91682-001	STUD 1/4 TURN SLOTTED	4
3	91684-000	RETAINER RING 1/4 TURN SPLIT RING	4
4	62912-002	FOAM STRIP 1/16 X 3/8 5.625" LONG	2
5	62912-002	FOAM STRIP 1/16 X 3/8 4.875" LONG	2

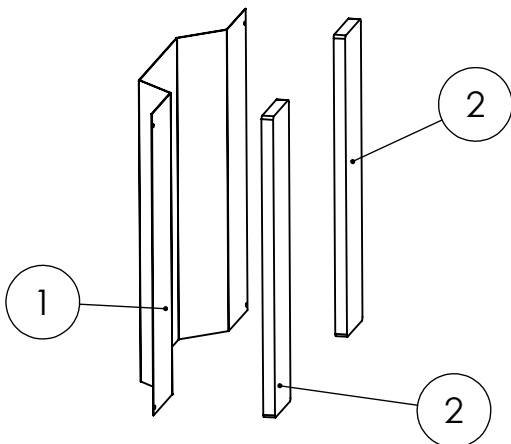


ITEM NO.	PartNo	DESCRIPTION	QTY.
1	99515-033	ROOF	1
2	99393-175	ROOF FOAM	1
3	91683-000	1/4 TURN CLIP NUT	8

Housing Rear Assemblies

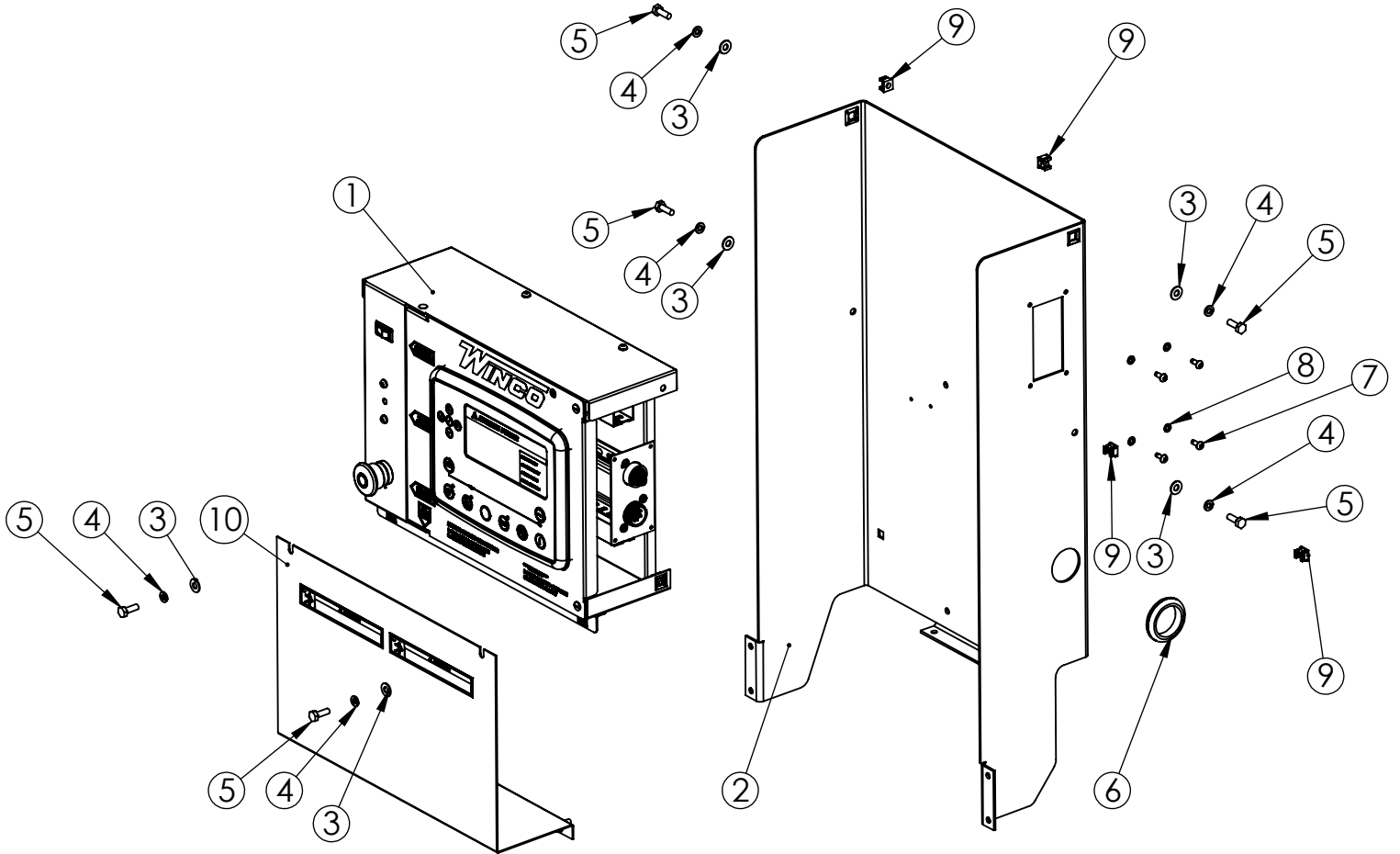


ITEM NO.	PartNo	DESCRIPTION	QTY.
1	99100-025	REAR HOUSING	1
2	99393-176	REAR TOP FOAM	1
3	99393-177	REAR BOTTOM FOAM	1
4	99393-180	REAR SIDE FOAM WITH HINGE	1
5	99393-178	REAR SIDE FOAM	1
6	92495-000	.25-20 TINNERMAN	8
7	62912-000	.500 X .125 FOAM 29.25 LONG	2
8	98313-001	WINCO LOGO	1
9	350054-5	HINGE BLACK	2
10	526-000	5/16 FLAT WASHER	4
11	16446-000	M8-1.25 NYLOCK	4
12	16248-000	.25-20 FLANGE NUT	2
13	94980-001	THREAD STUD .25-20X.625	2
14	99378-064	REAR BAFFLE ASSY	1

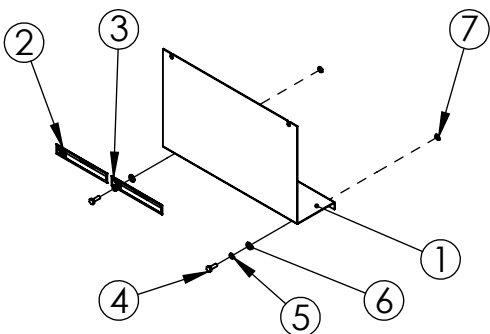


ITEM NO.	PartNo	DESCRIPTION	QTY.
1	99378-064	REAR CENTER BAFFLE	1
2	99393-179	REAR BAFFLE FOAM	2

Engine Control Assembly

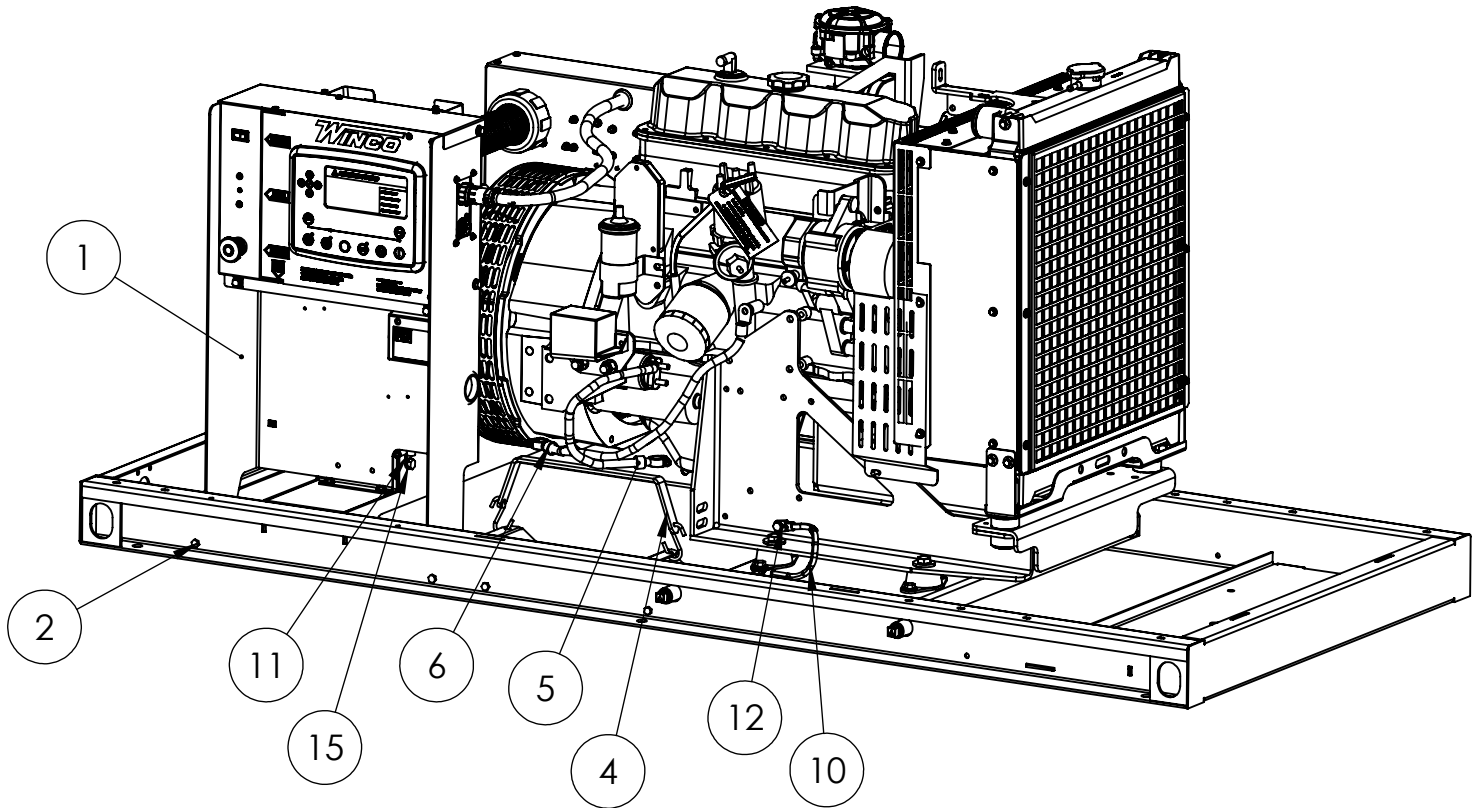


ITEM NO.	PartNo	DESCRIPTION	Housed unit/QTY.
1	351891-43	DSE 7310 MKII ENGINE CONTROL	1
2	99826-035	CONTROL TOWER	1
3	512-000	.25 WASHER	6
4	479-000	LOCK WASHER .25IN ID.	6
5	466-000	.25-20X.75 HHB	6
6	23917-004	GROMMET 1.5" ID	1
7	21698-001	TORX PAN HEAD SCREW #10	4
8	96286-002	FLAT WASHER NYLON	4
9	92495-002	1/4-20 TINNERMAN (12 GA)	4
10	99826-038	BATTERY CHARGER COVER	1



ITEM NO.	PartNo	DESCRIPTION	QTY.
1	99826-038	BATTERY CHARGER COVER	1
2	15209-003	UL-DECAL ELECTRICAL SHOCK CAN KILL	1
3	15209-100	UL-DECAL ELECTRICAL SHOCK CAN KILL (FRENCH)	1
4	466-000	.25-20X.75 HHB	2
5	479-000	LOCK WASHER .25IN ID.	2
6	512-000	.25 WASHER	2
7	15376-001	PUSH NUT BOLT RETAINER	2

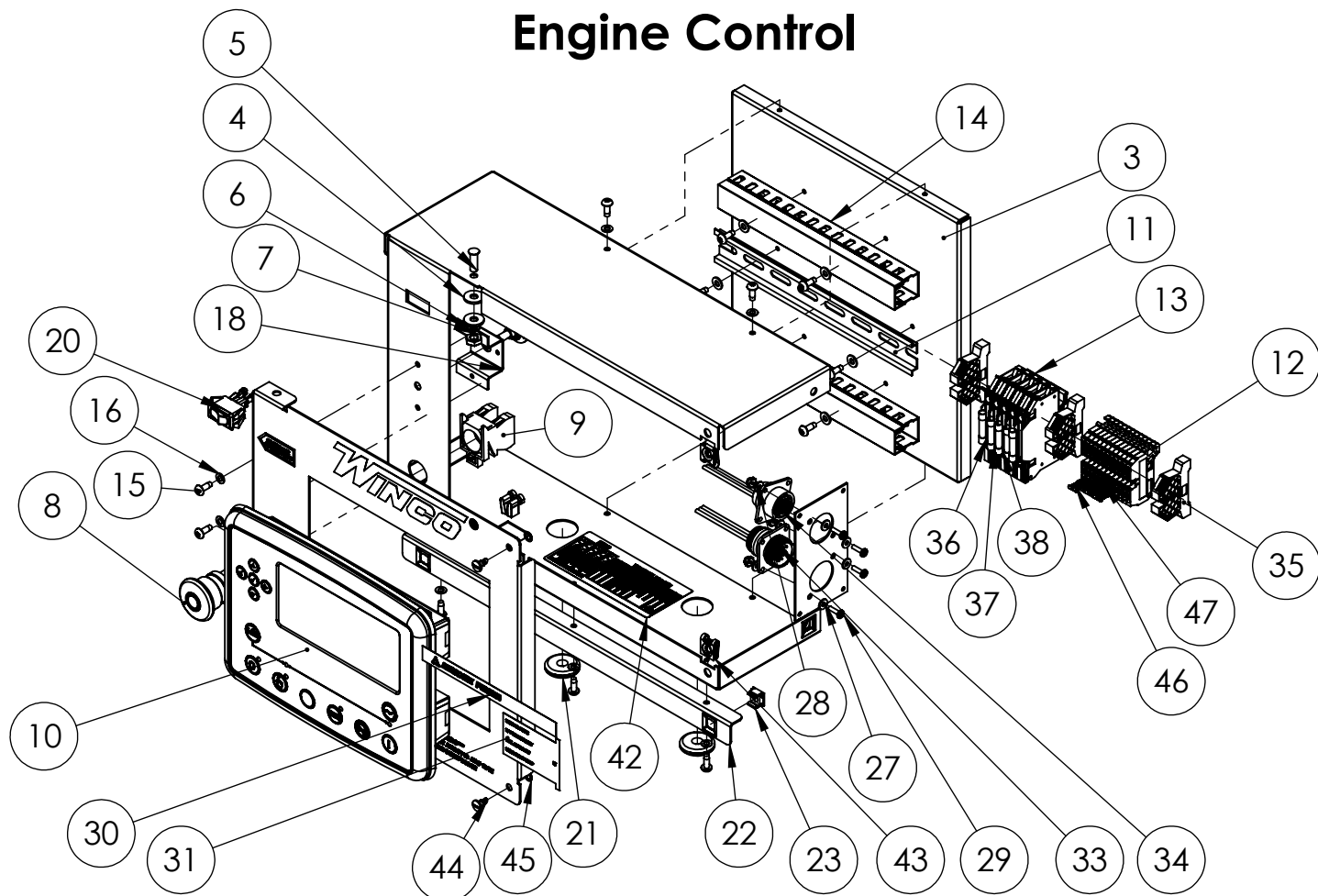
Control Assembly and Cables



ITEM NO.	PartNo	DESCRIPTION	QTY.
1	99836-135	CONTROL TOWER ASSY	1
2	65000-001	.25-20X.75 SS HHCS	4
3	16248-000	.25-20 FLANGE NUT	6
4	16329-001	RUBBER STRAP, BATTERY HOLD DOWN.	1
5	53220-039	BATTERY CABLE ASSY	1
6	53220-012	BATTERY CABLE ASSY	1
7	21698-001	TORX PAN HEAD SCREW #10	2
8	512-000	.25 WASHER	2
9	466-000	.25-20X.75 HHB	2
10	93542-019	LEAD WIRE ASSY	1
11	93542-018	LEAD WIRE	1
12	55224-000	LOCK WASHER 5/16 EXTERNAL TOOTH	2
13	467-000	HHCS 5/16-18X.75	2
14	16249-000	.3125-18 FLANGE	2
15	4516-001	LOCKWASHER 3/8 EXTERNAL TOOTH	2
16	16250-000	.375-16 FLANGE NUT	2
17	91658-001	.375 - 16 X1 HHB	2

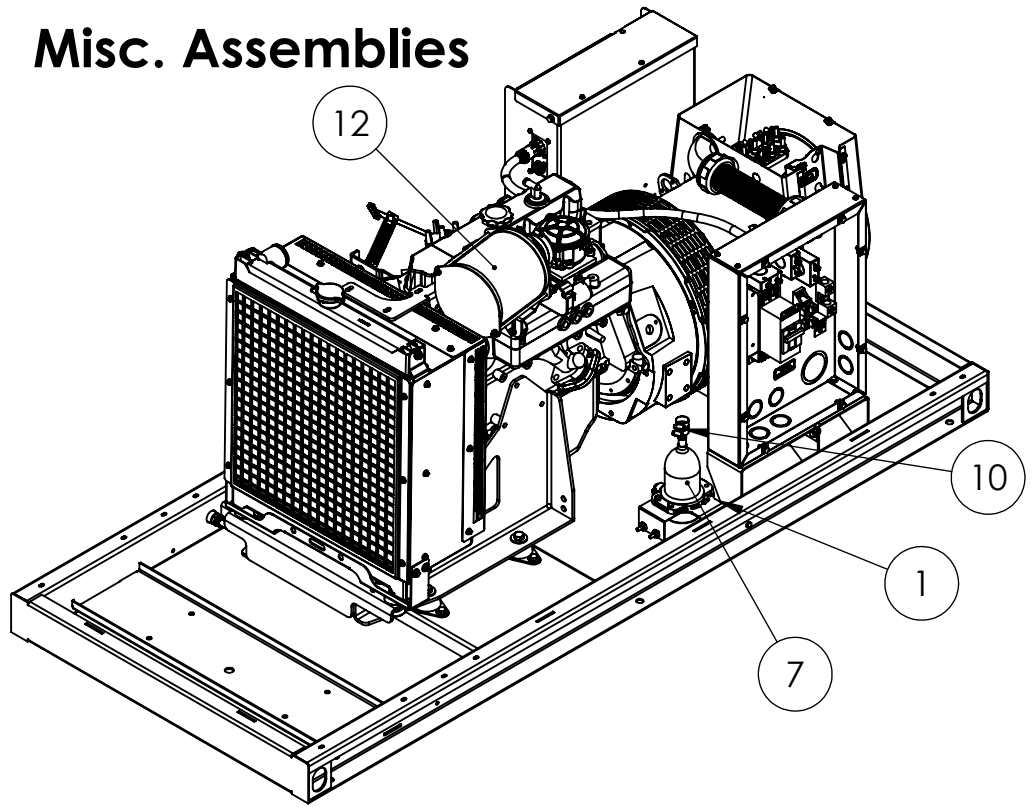
BATTERY CHARGERS	
2 AMP	352020-12
5 AMP	352020-18
10 AMP	352020-19
10 AMP NFPA	352020-20

Engine Control

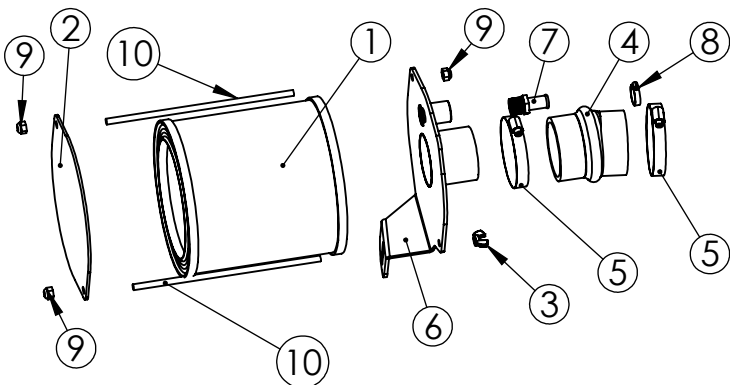


ITEM NO.	PART NUMBER	DESCRIPTION	QTY.
1	351900-33	CONTROL BOX MAIN BASE	1
2	351900-38	DSE 7310 MKII CONTROL PANEL WITH SILK SCREEN FOR PSS	1
3	351900-34	CONTROL BOX DIN RAIL MOUNTING PLATE	1
8	99783-001	SWITCH, PUSH-PULL	1
9	99783-002	SWITCH CONTACT	1
10	351112-29	DEEP SEA ELECTRONICS 7310 MKII	1
11	64551-005	DIN RAIL 9.5"	1
12	80623-009	TERMINAL BLOCK, DIN MOUNTED, SPRING CAGE	12
13	2489-003	FUSE HOLDER, DIN MOUNTED	5
19	97517-001	REOSTAT	1
20	64089-000	SPST, ROCKER SWITCH	2
21	23917-002	GROMMET .375 X 1	2
22	351900-35	COVER SUPPORT BRACKET	1
26	351900-37	PLUG MOUNTING PLATE	1
36	95064-006	FUSE AGC 10 AMP	1
37	95064-000	FUSE AGC 3 AMP	1
38	95064-008	FUSE AGC 2 AMP	3
42	351095-16	DECAL, FUSES AND TERMINAL BLOCKS	1

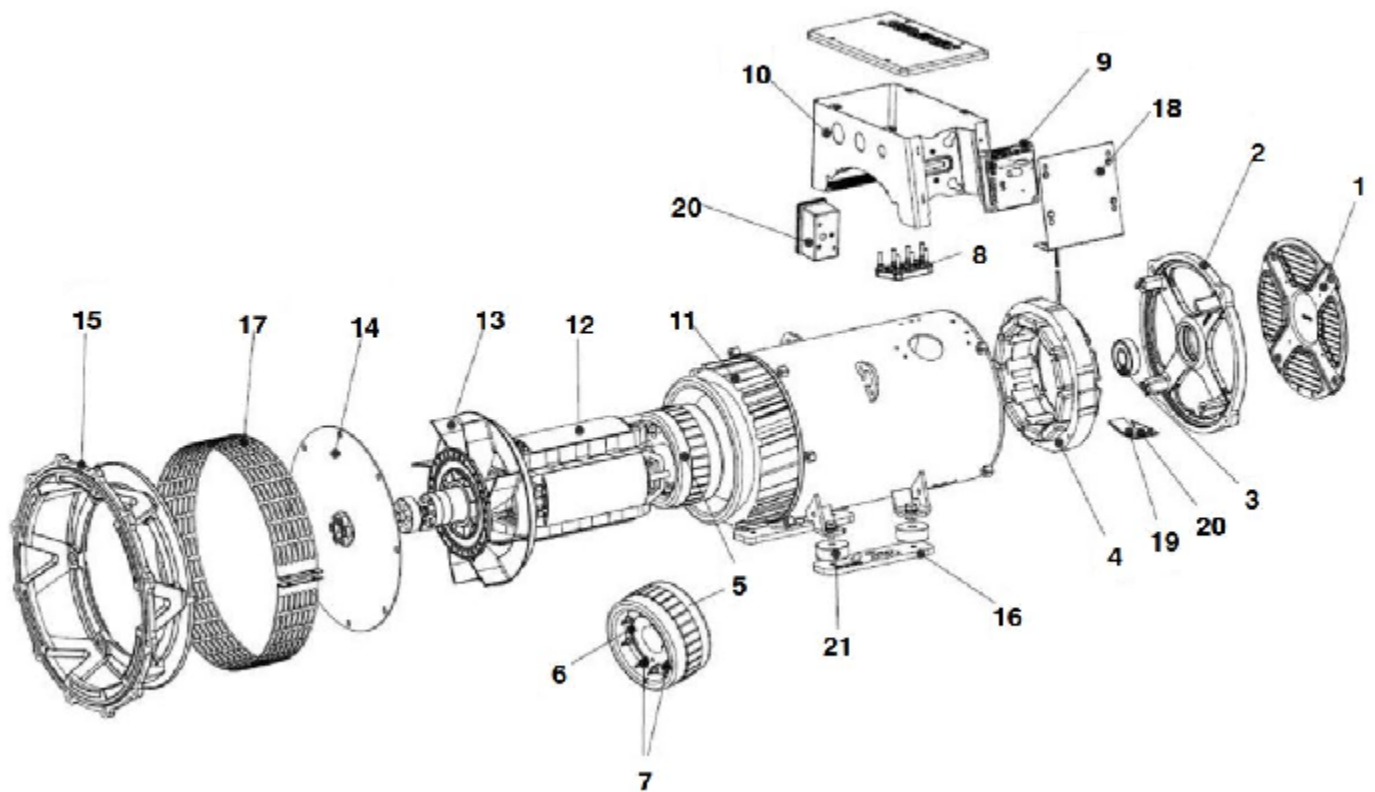
Misc. Assemblies



ITEM NO.	PartNo	DESCRIPTION	QTY.
1	351929-2	BLOCK HEATER BRACKET	1
2	94338-001	COOLANT RECOVERY TANK	1
3	512-000	.25 WASHER	2
4	55505-004	HOSE 12"	1
5	56107-016	HOSE 19"	1
6	81018-008	HOSE CLAMP .875-.25	4
7	80781-018	BLOCK HEATER WITH THERMOSTAT ASSY	1
8	65000-001	.25-20X.75 SS HHCS	2
9	16248-000	.25-20 FLANGE NUT	2
10	81018-005	HOSE CLAMP 1.0625-.500	4
11	55440-002	SELF TAP .25-20 X .625	2
12	352104-6	AIR FILTER ASSEMBLY	1
13	96002-025	M8-1.25X25MM	1
14	97436-008	LOCKWASHER M8	1



ITEM NO.	PartNo	DESCRIPTION	QTY.
1	97294-008	AIR FILTER ELEMENT	1
2	352104-14	END PLATE	1
3	56843-000	WING NUT 1/4-20	1
4	352104-19	FLEX HOSE 2.25"	1
5	81018-002	HOSE CLAMP 3-2.0625	2
6	352104-18	AIR FILTER BRACKET WELDMENT	1
7	92388-002	HOSE FIT .375NPT X .500 HOSE	1
8	81018-008	HOSE CLAMP .875-.25	1
9	47517-000	.25-20 NYLOCK	3
10	15068-017	STUD .25-20 X 8.00	2



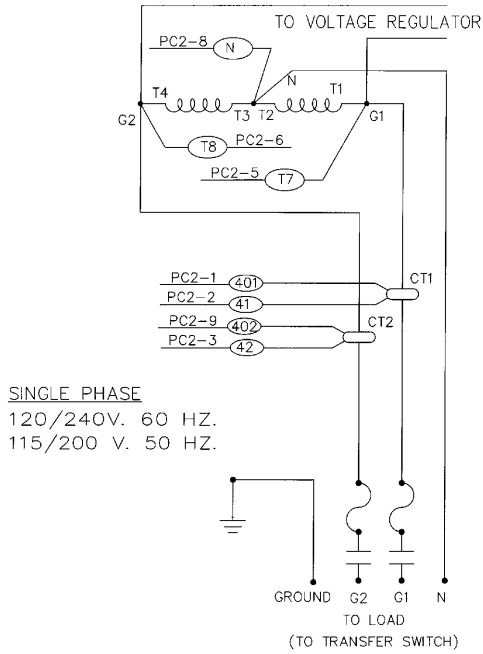
ITEM	DESCRIPTION	PSS21-3	PSS21-4, 17, 18	PSS30-3	PSS30-4, 17, 18	QTY
-	COMPLETE GENERATOR END	350023-7	350023-8	350023-3	350023-1	1
-	STAMFORD MODEL	S0L2-M1	S0L2-M1	S1L2-H1	S1L2-K1	-
-	WINDING	706	711	706	711	-
9	AVR AS540	8-101				1
For additional parts support contact WINCO service.						

EXPECTED RESISTANCE (Ω) @ 22C

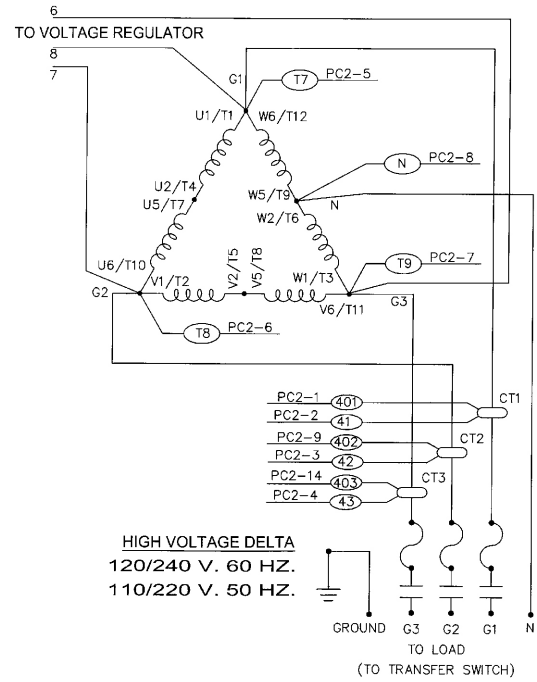
MODEL	S0L1 M1 706	S0L2-M1 711	S1L2-H1 706	S1L2-K1 711
STATOR WINDING (PER PHASE SERIES CONNECTED)	0.097	0.290	0.079	0.177
ROTOR WINDING	0.747		0.891	0.965
EXCITER STATOR	15.420		16.55	15.5
EXCITER ROTOR (PER PHASE)	0.106		0.100	0.112
POSSITIVE SEQUENCE (R1)	0.121	0.362	0.099	0.221
NEGATIVE SEQUENCE (R2)	0.139	0.417	0.114	0.255
ZERO SEQUENCE (R0)	0.121	0.362	0.099	0.221
AUX WINDING	2.570	5.160	2.388	3.91

Generator Connections

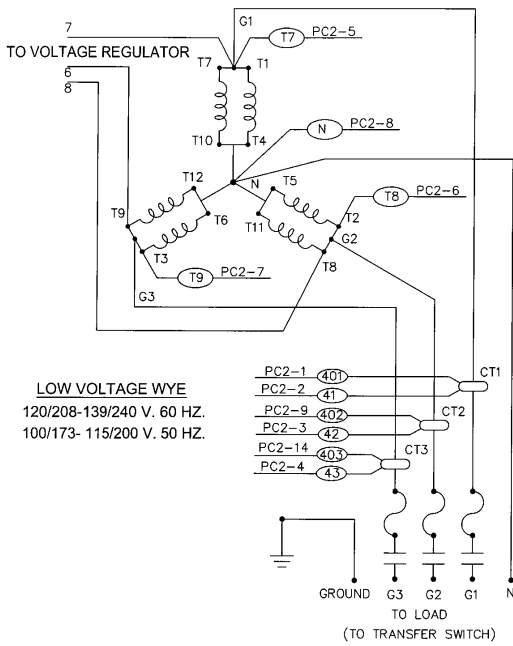
SINGLE PHASE 120/240 VOLTS



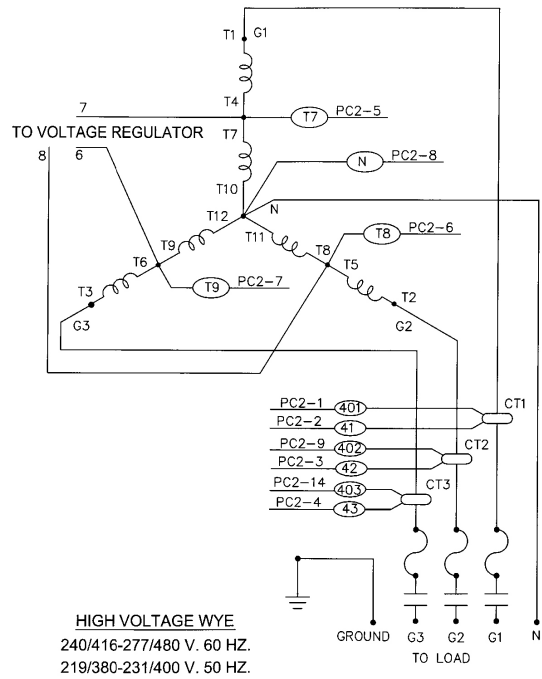
THREE PHASE -DELTA 120/240 VOLTS



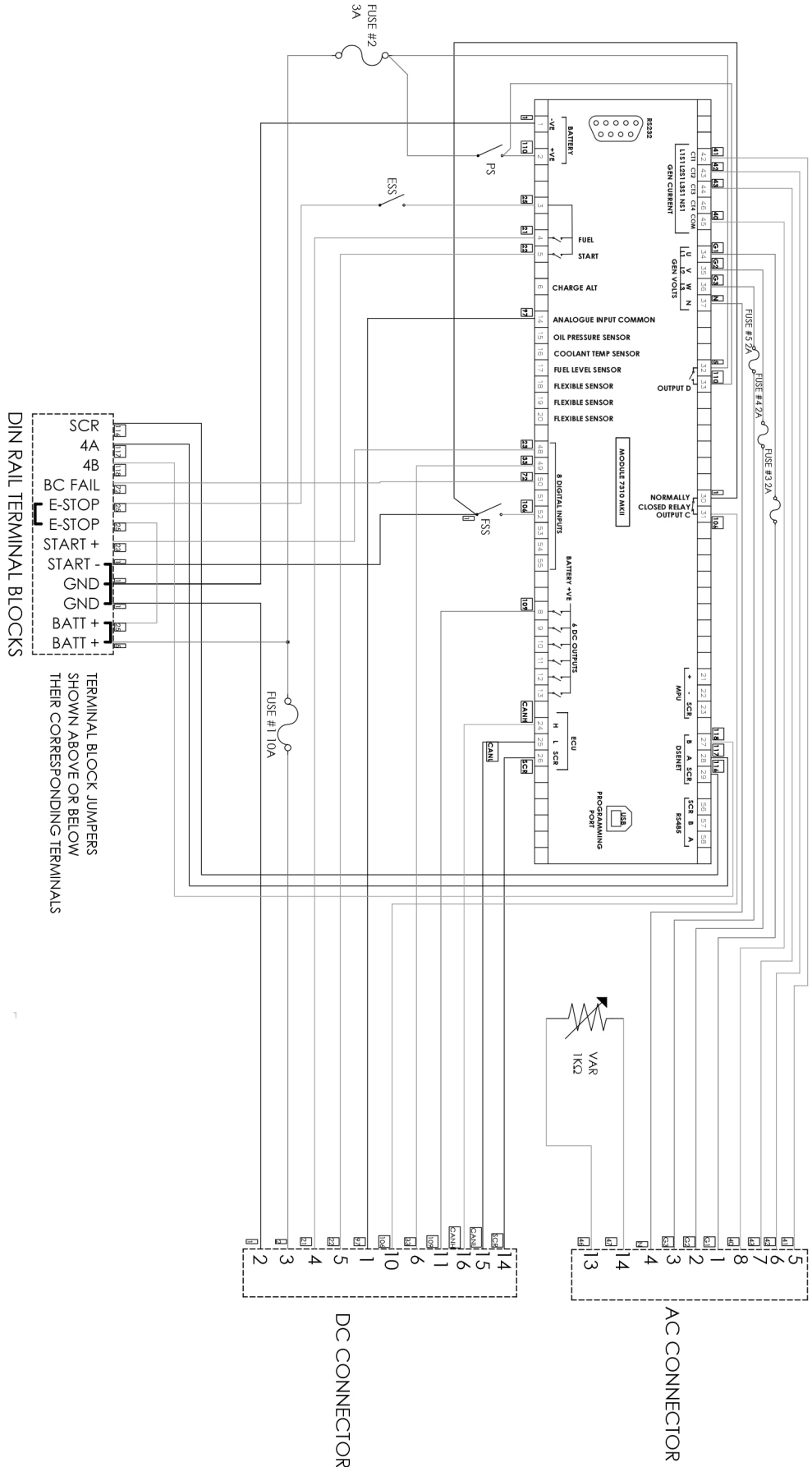
THREE PHASE-LOW WYE 120/208 VOLTS



THREE PHASE-HIGH WYE 277/480 VOLTS



Genset Control Schematic



Harness Schematic

