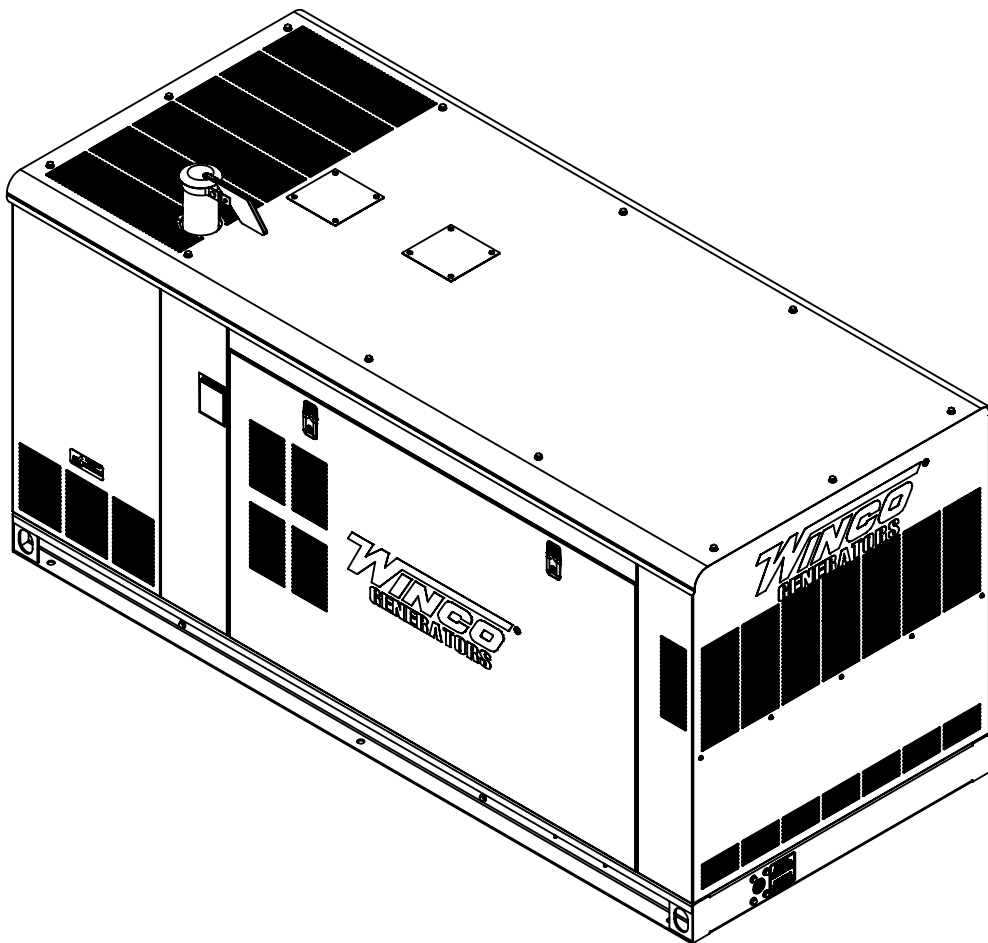




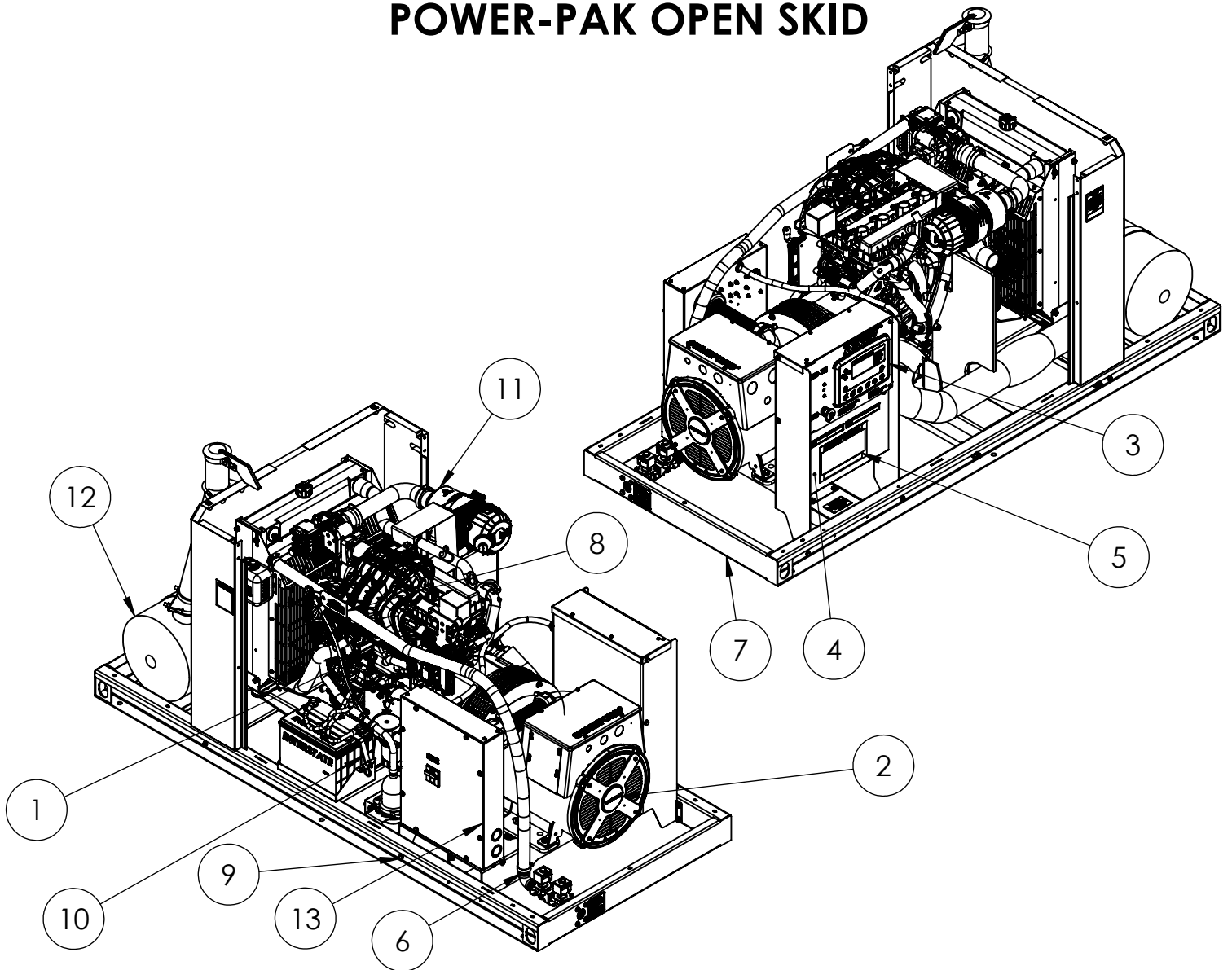
PSS21F4-XX1
PSS21F4-XX2
PSS30F4-XX1
Parts List

This manual covers a product family with many variations of voltages and accessories. Not all options in the parts lists were included in each model. Contact WINCO service with your serial number if you are not sure which options were included with your generator.



WINCO Service
Phone: 507-357-6831
Email: service@wincogen.com
www.wincogen.com

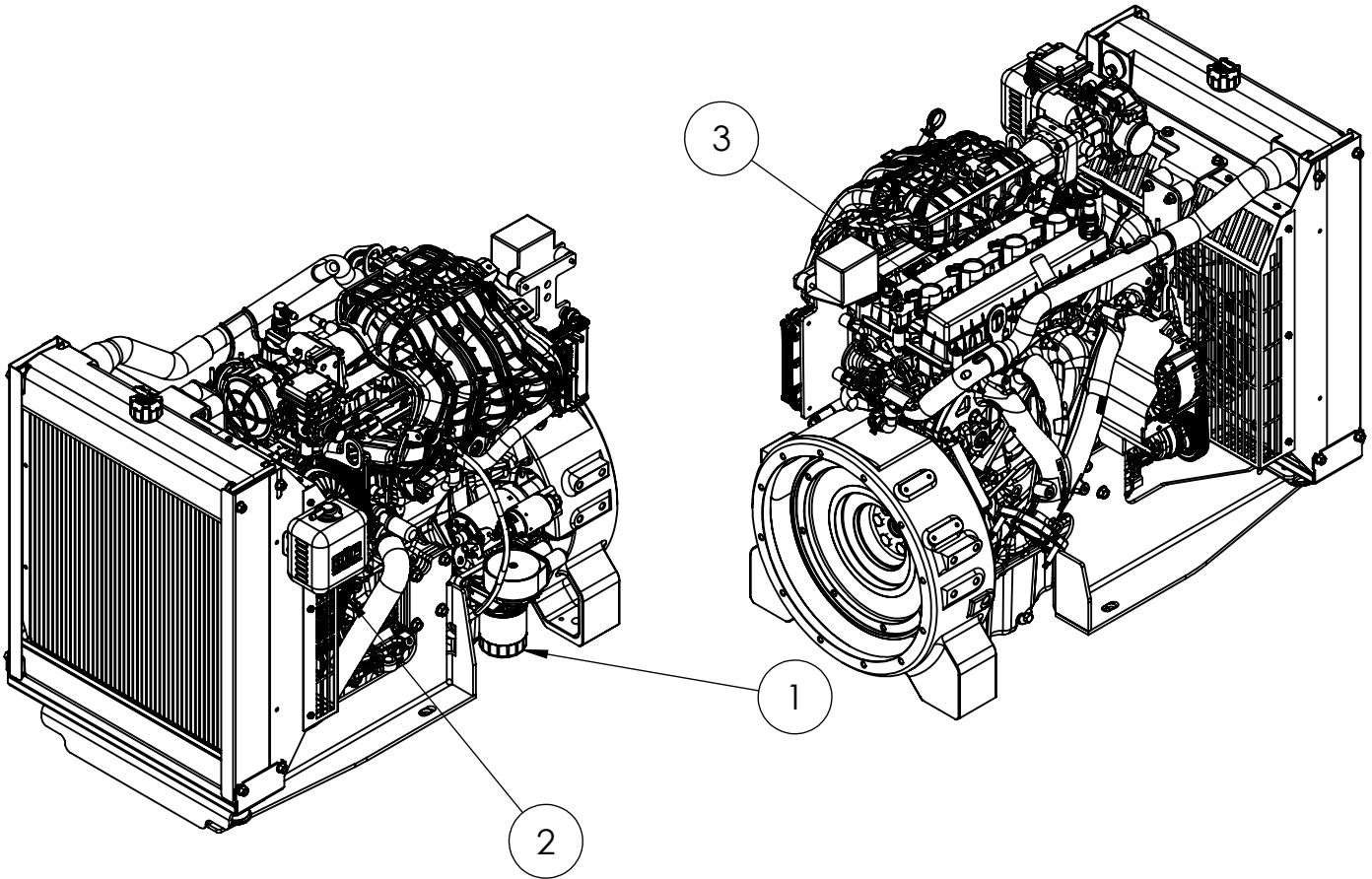
POWER-PAK OPEN SKID



ITEM NO.	PART NUMBER	DESCRIPTION	EXPLODED VIEW/QTY.
1	350002-35S	ENGINE, EDI FORD, 2.5L,I-4, NATURAL,NG/LP,ECU,12V,STANDBY	1
2	350023-1	GEN END, S1L2-K1, 38.4 KW AT 125C, WDG#711, CLASS H, 4-POLE, 1500-1800 RPM, STAMFORD, SAE 4-10	1
3	99836-145	ENGINE CONTROL ASSEMBLY	1
4	352020-12	BATTERY CHARGER KIT 12V 5 AMP NPTA	1
5	63966-005	KIT, NAMEPLATE WINCO PSS	1
6	99362-025	FUEL SYSTEM	1
7	99382-331	STATION 1	1
8	99382-332	STATION 2	1
9	99382-333	PSS30 STATION 3 ASSEMBLY	1
10	99382-334	STATION 4 ASSEMBLY	1
11	99382-335	STATION 5 ASSEMBLY	1
12	99687-028	EXHAUST SYSTEM	1
13*	99836-147	CB BOX ASSEMBLY	1

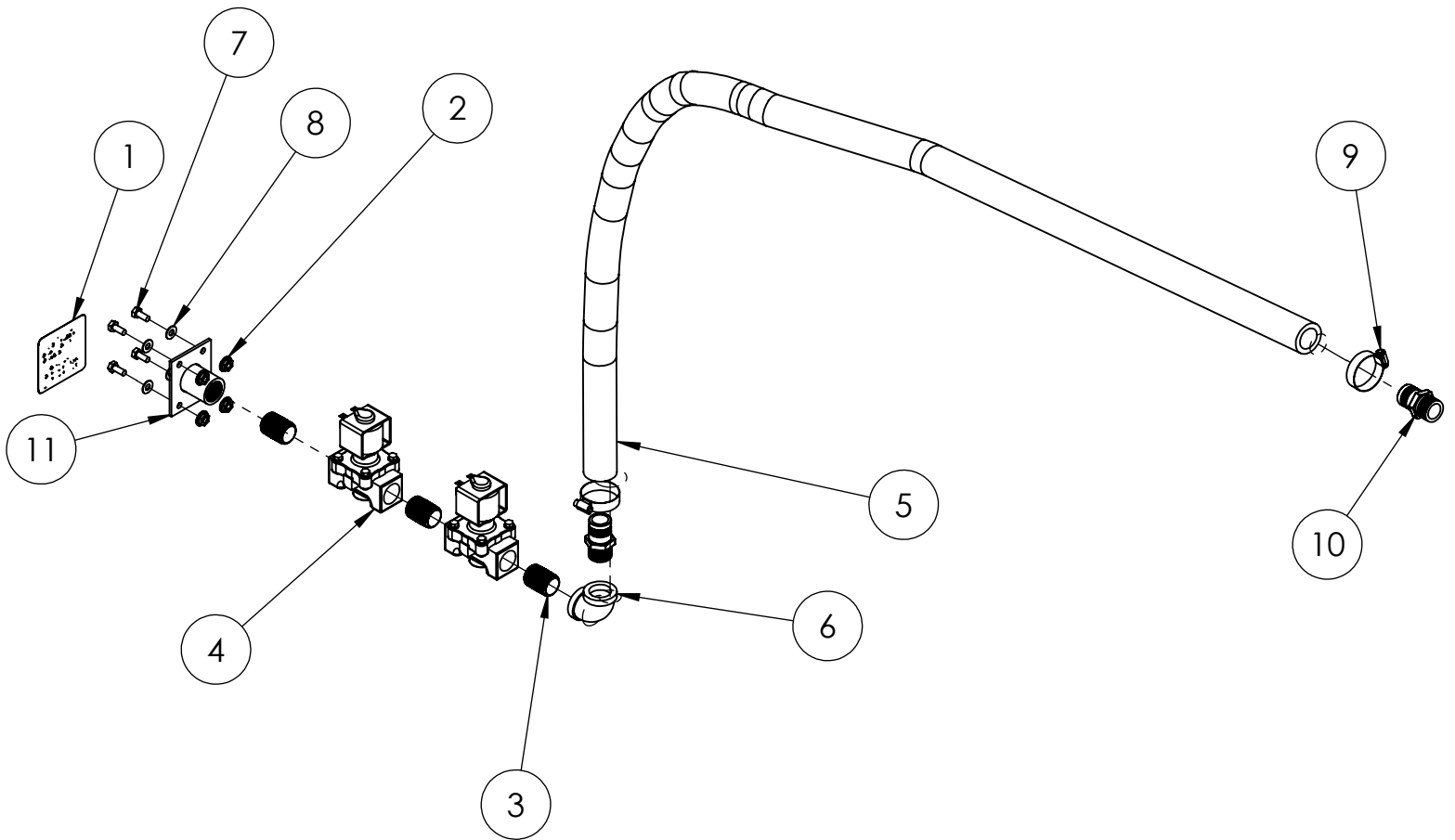
* CB box assembly for 480V PSS21 only: 99836-180

ENGINE



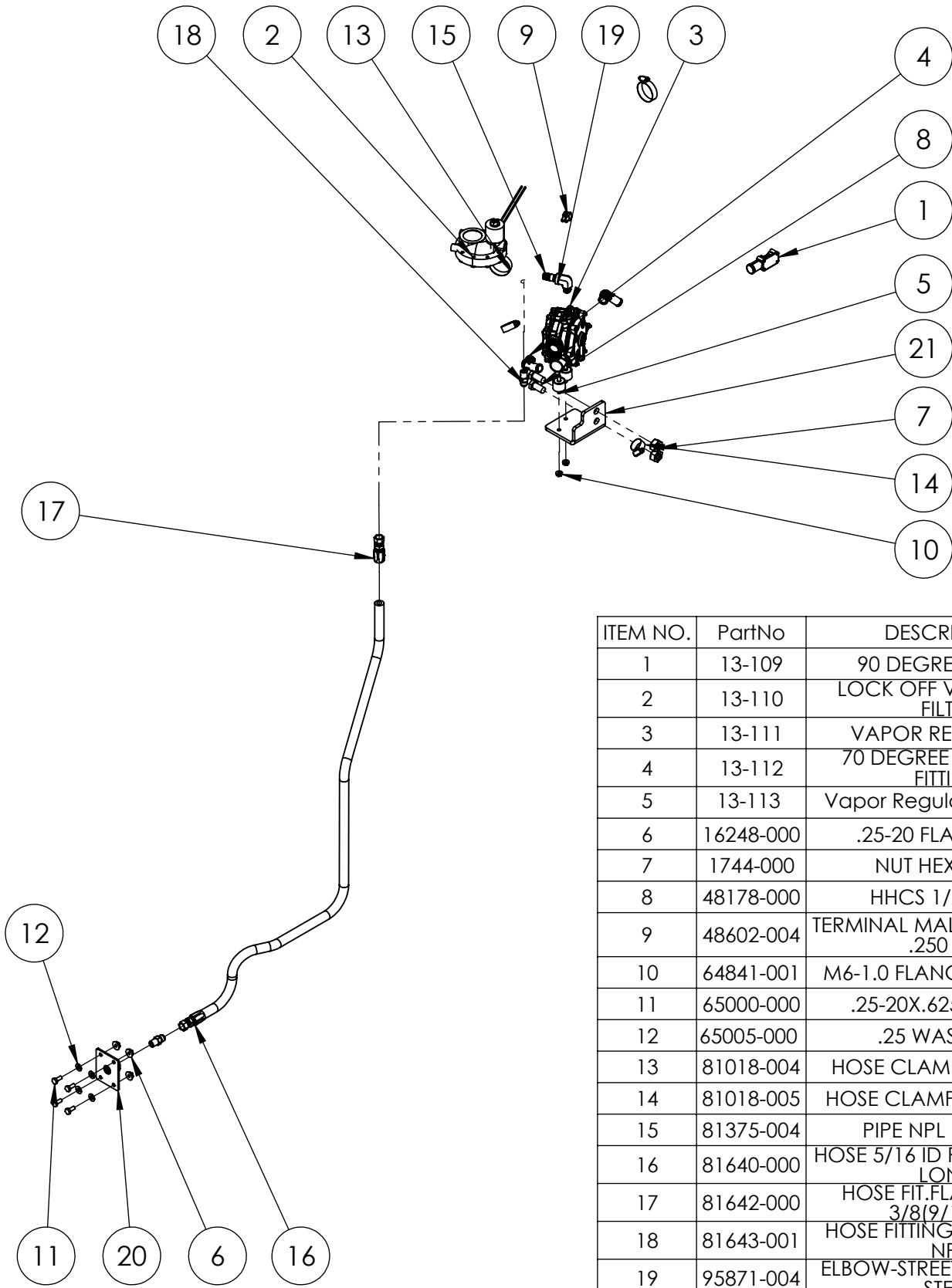
ITEM	PART	DESCRIPTION	QTY
1	13-106	OIL FILTER	1
2	13-107	SERPENTINE BELT	1
3	13-108	SPARK PLUG	4
CONTACT WINCO SERVICE FOR FULL ENGINE PARTS SUPPORT.			

Vapor Fuel System



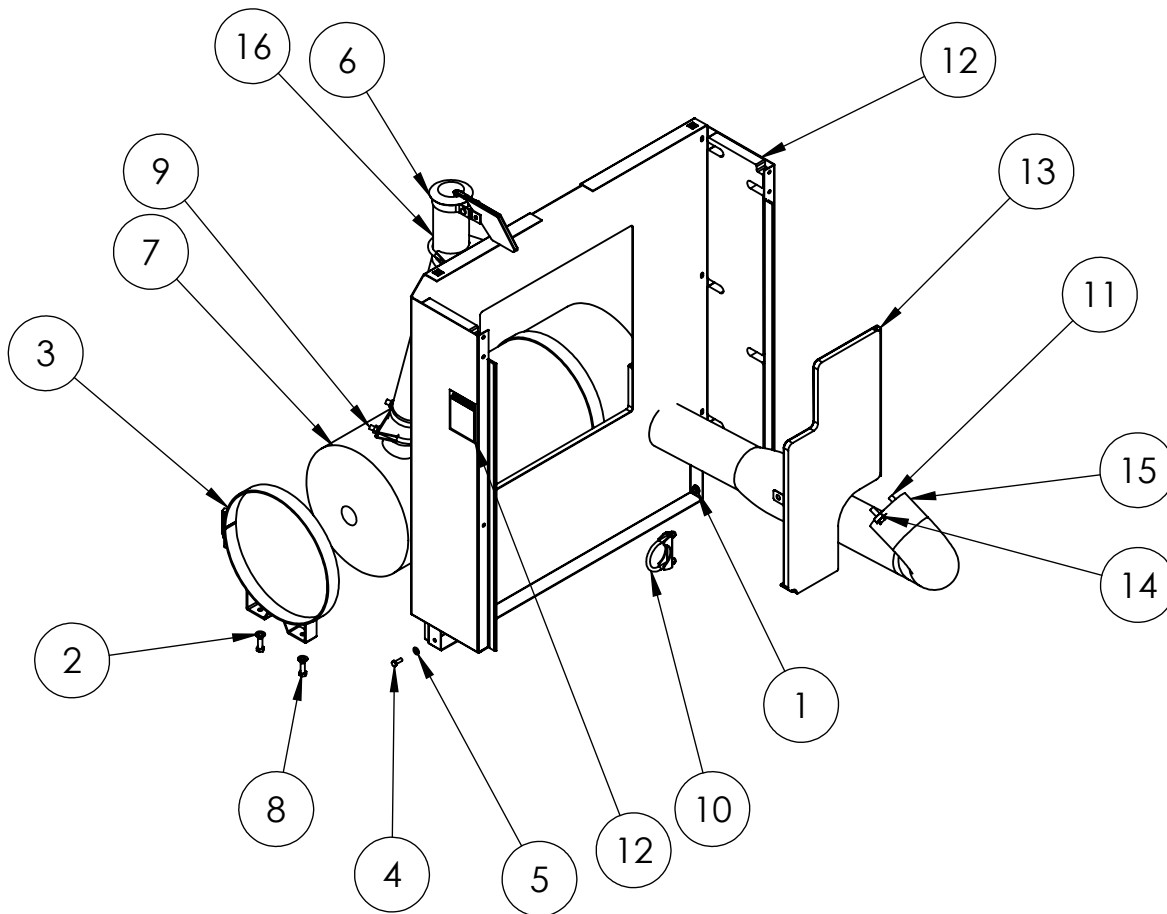
ITEM NO.	PART NUMBER	DESCRIPTION	EXPLODED VIEW/QTY.
1	15210-010	FUEL PRESSURE DECAL	1
2	16248-000	.25-20 FLANGE NUT	4
3	22626-000	PIPE NPL 3/4NPTXCLOSE (1-1/8)	3
4	42942-000	SOLENOID, GAS VALVE, 12VDC, 3/4NPT	2
5	49409-014	HOSE 1" ID 60" VAPOR	1
6	50244-000	ELBOW-PIPE .75NPT 90DEG	1
7	65000-000	.25-20X.625 SS HHCS	4
8	65005-000	.25 WASHER SS	4
9	81018-004	HOSE CLAMP 1.75-.8125	2
10	92388-004	HOSE FITTING .75NPT X 1" HOSE BARB	2
11	99065-007	FUEL WELDMENT .75 NPT	1

Liquid-Withdrawl Fuel System



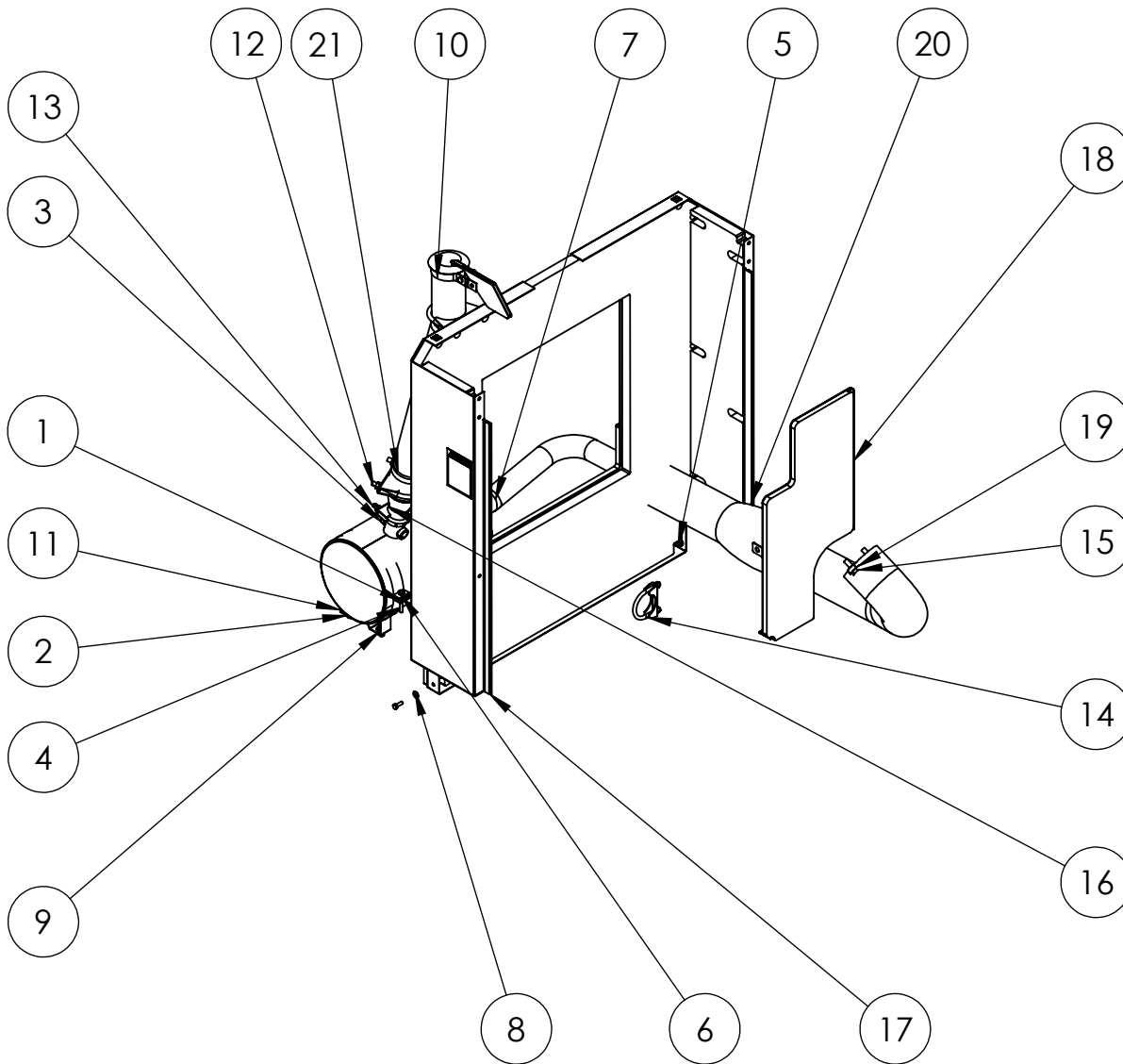
ITEM NO.	PartNo	DESCRIPTION	QTY.
1	13-109	90 DEGREE FITTING	1
2	13-110	LOCK OFF VALVE WITH FILTER	1
3	13-111	VAPOR REGULATOR	1
4	13-112	70 DEGREE COOLANT FITTING	2
5	13-113	Vapor Regulator Isolators	2
6	16248-000	.25-20 FLANGE NUT	4
7	1744-000	NUT HEX 1/2-13	2
8	48178-000	HHCS 1/2-13 X 1	2
9	48602-004	TERMINAL MALE 16-14 AWG .250 TAB	2
10	64841-001	M6-1.0 FLANGE NUT ZINC	2
11	65000-000	.25-20X.625 SS HHCS	4
12	65005-000	.25 WASHER SS	4
13	81018-004	HOSE CLAMP 1.75-.8125	2
14	81018-005	HOSE CLAMP 1.0625-.500	2
15	81375-004	PIPE NPL 1/4 X 1.5	1
16	81640-000	HOSE 5/16 ID RUBBER 45.75" LONG	1
17	81642-000	HOSE FIT.FLARE JIC37° 3/8(9/16-18)	2
18	81643-001	HOSE FITTING JIC3/8 - 1/4 NPT	2
19	95871-004	ELBOW-STREET 1/4NPT 90D STEEL	1
20	99065-008	FULE PLATE WELDMENT	1
21	99367-131	VAPORIZER BRACKET 425 FORD	1

Exhaust System Sound-Pak (Housed) and Power-Pak (Open)



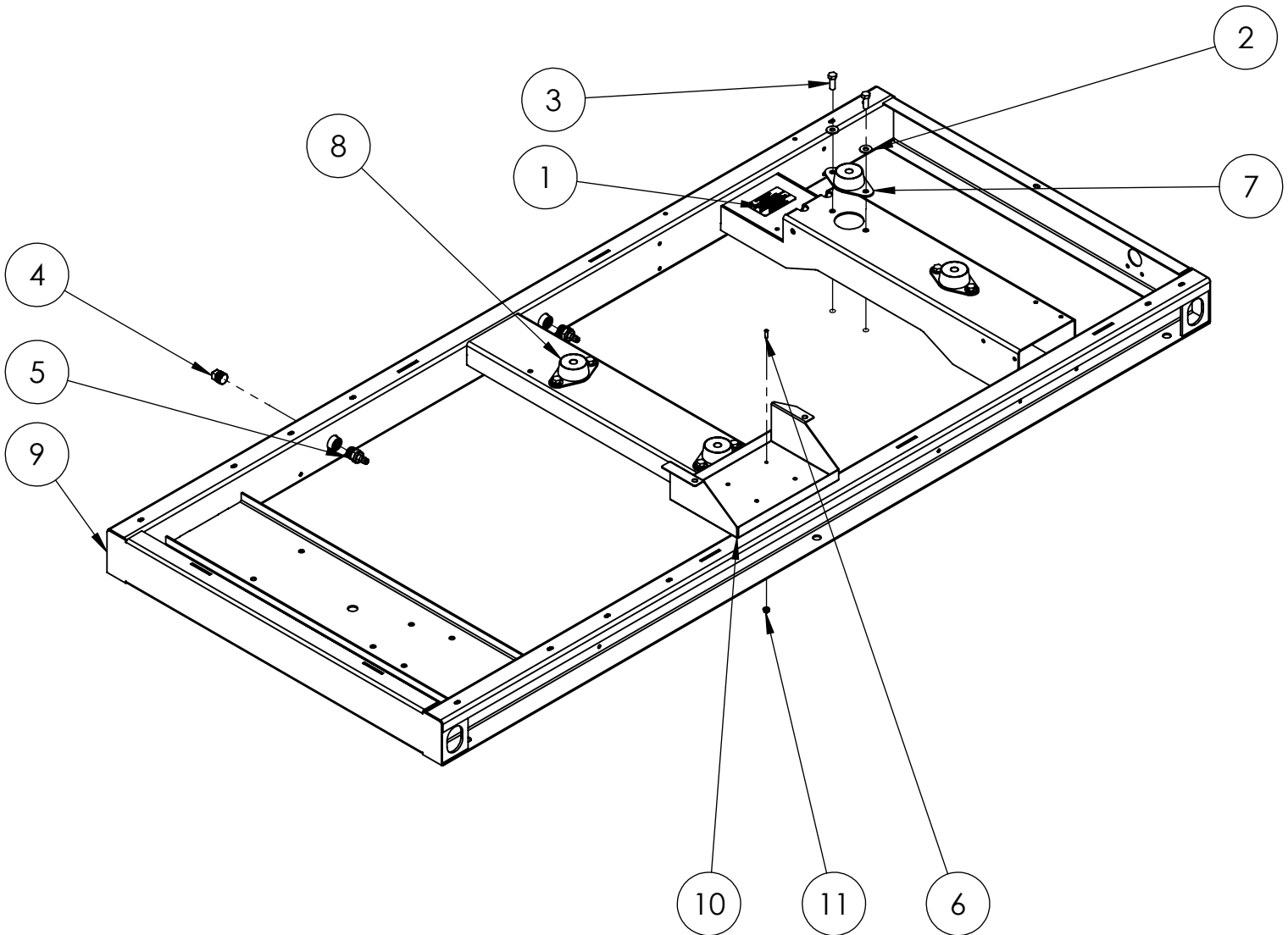
ITEM NO.	PART NUMBER	DESCRIPTION	EXPLODED VIEW/QTY.
1	16248-000	.25-20 FLANGE NUT	6
2	20604-000	3/8 WASHER	4
3	350264-3	EXHAUST CLAMP 12"	2
4	466-000	.25-20X.75 HHB	6
5	512-000	.25 WASHER	6
6	53111-008	3" RAIN CAP	1
7	80519-022	CRITICAL GRADE SILENCER	1
8	91658-001	.375-16 X 1 HHB	4
9	93489-001	MUFFLER CLAMP 3" 3/8"	2
10	93489-011	MUFFLER CLAMP 2.25"	1
11	94282-035	M10-1.5X30MMM	2
12	99071-064	RAD HOUSING ASSEMBLY	1
13	99100-053	EXHAUST BAFFLE	1
14	99298-042	EXHAUST FLEX PIPE	2
15	99298-043	EXHAUST FLEX PIPE WRAP	1
16	99298-044	TAIL PIPE	1

Exhaust System Sound-Pak (Housed) and Power-Pak (Open)--(PRIME)



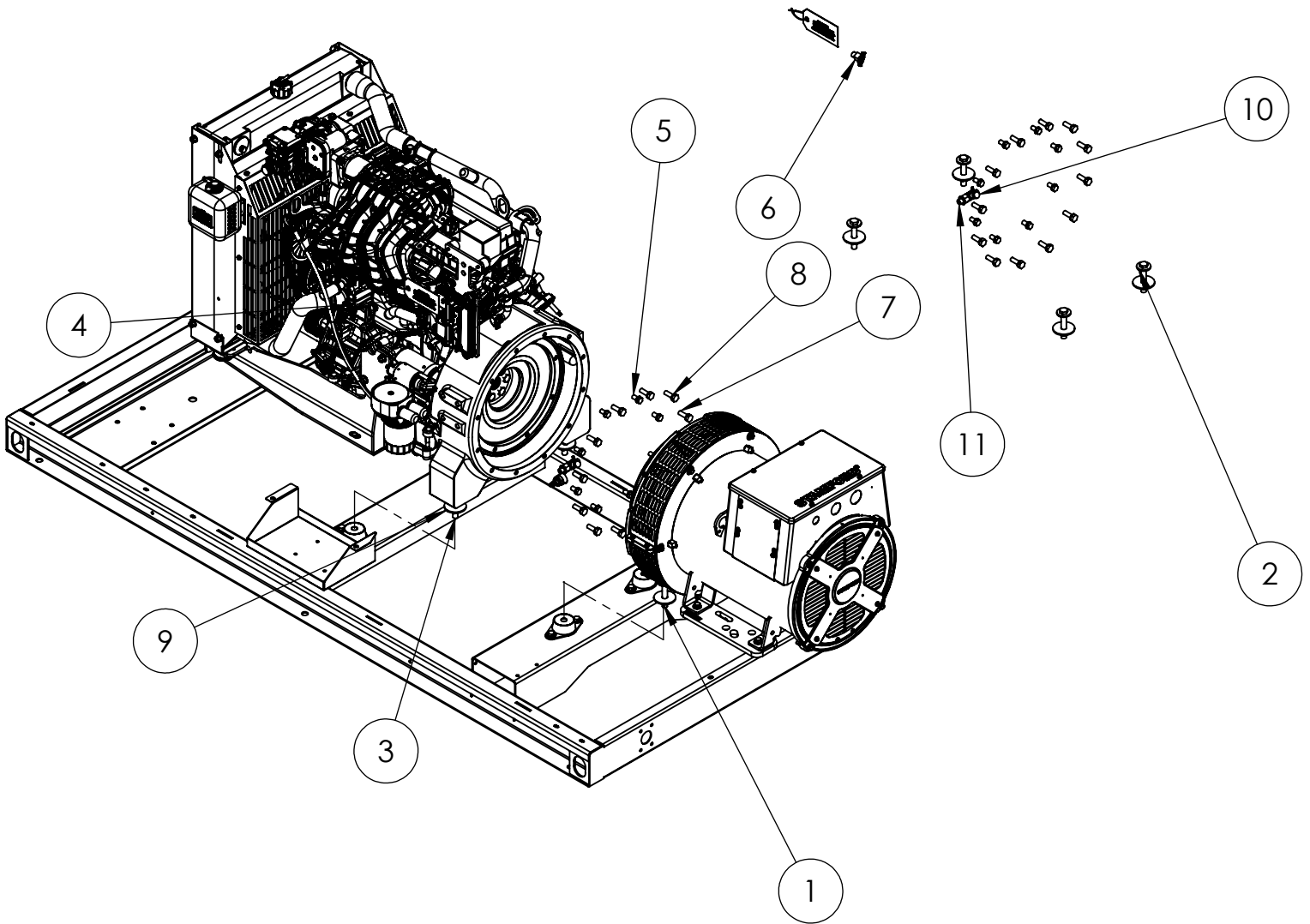
ITEM NO.	PartNo	DESCRIPTION	QTY.
1	16248-000	.25-20 FLANGE NUT	8
2	16249-000	.3125-18 FLANGE	4
3	350002-35	CATALYST MUFFLER	1
4	466-002	.25-20X2 HHB	2
5	466-000	.25-20X.75 HHB	6
6	479-000	LOCK WASHER, .25" SPLIT	2
7	508150-016	EXHAUST PIPE	1
8	512-000	.25 WASHER	6
9	526-000	5/16 FLAT WASHER	4
10	53111-008	3" RAIN CAP	1
11	93484-004	MUFFLER MTG.BRACKET 8.125IN - PAINTED	2
12	93489-001	MUFFLER CLAMP 3" 3/8"	2
13	93489-005	MUFFLER CLAMP, 1-3/4"	2
14	93489-011	MUFFLER CLAMP 2.25"	1
15	96003-030	M10-1.5X30MM	2
16	97759-012	EXHAUST REDUCER	1
17	99071-064	RAD HOUSING ASSEMBLY	1
18	99100-053	EXHAUST BAFFLE	1
19	99298-042	EXHAUST FLEX PIPE	2
20	99298-043	EXHAUST FLEX PIPE WRAP	1
21	99298-044	TAIL PIPE	1
22	467-000	HHCS 5/16-18X.75	4

Base Assembly



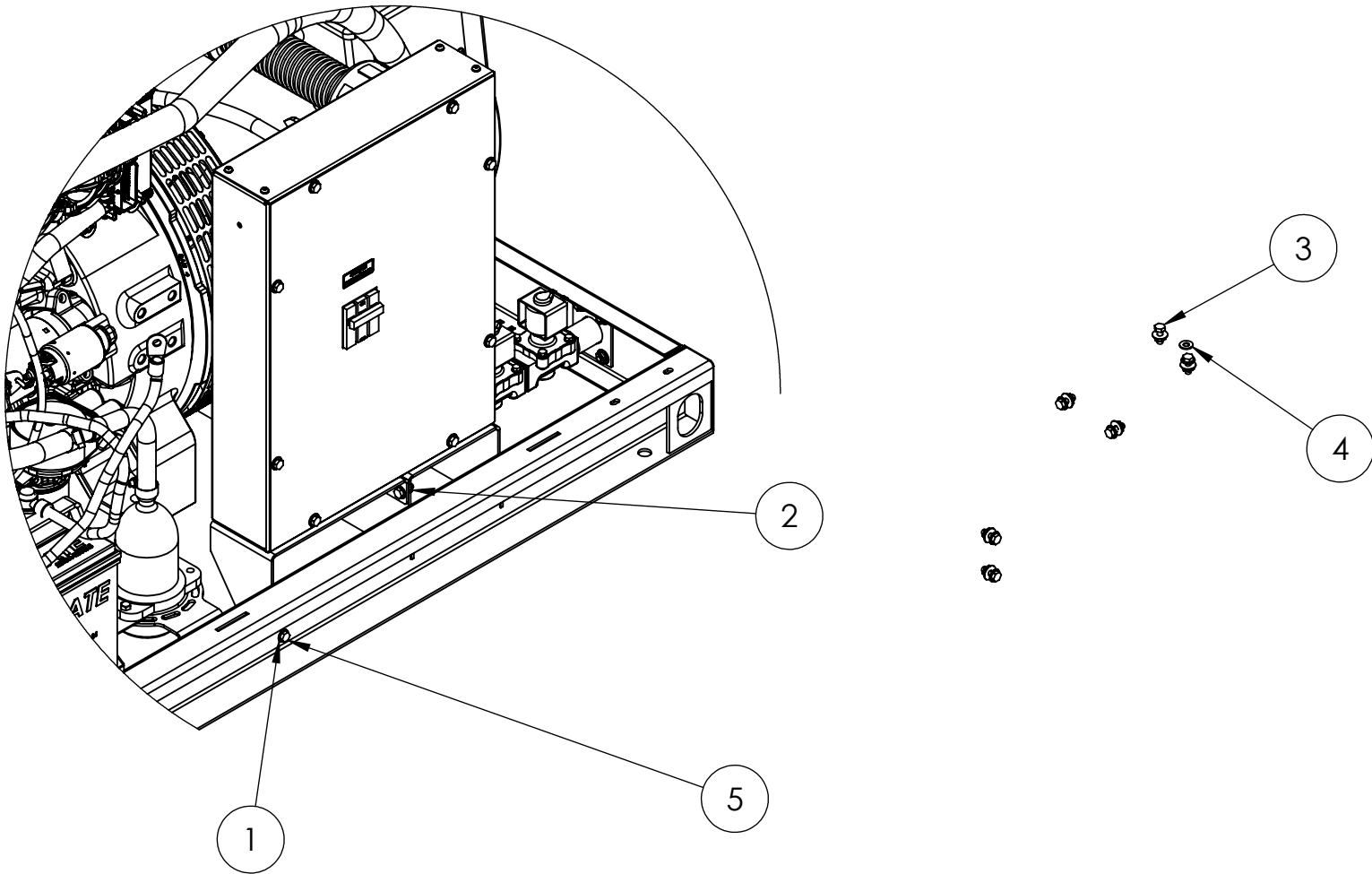
ITEM NO.	PART NUMBER	DESCRIPTION	EXPLODED VIEW/QTY.
1	16200-515	MAINTENANCE KIT DECAL	1
2	526-000 *	WASHER ID .375 OD .890	8
3	91658-001	.375-16 X 1 HHB	8
4	93084-000	PIPE PLUG .50 GALV	2
5	94319-008	HOSE FIT. .500-14NPT X .375 HOSE BARB	2
6	95568-000	THREAD STUD 10-24 X .625	4
7	98807-004	SHOCKMOUNT GREEN	2
8	98807-005	SHOCKMOUNT GREEN/GOLD	2
9	99309-170	WELDED BASE	1
10	99317-007	BATTERY TRAY	1
11	99671-000	#10-24 HEX NUT	4

Engine and Generator Mounting Hardware



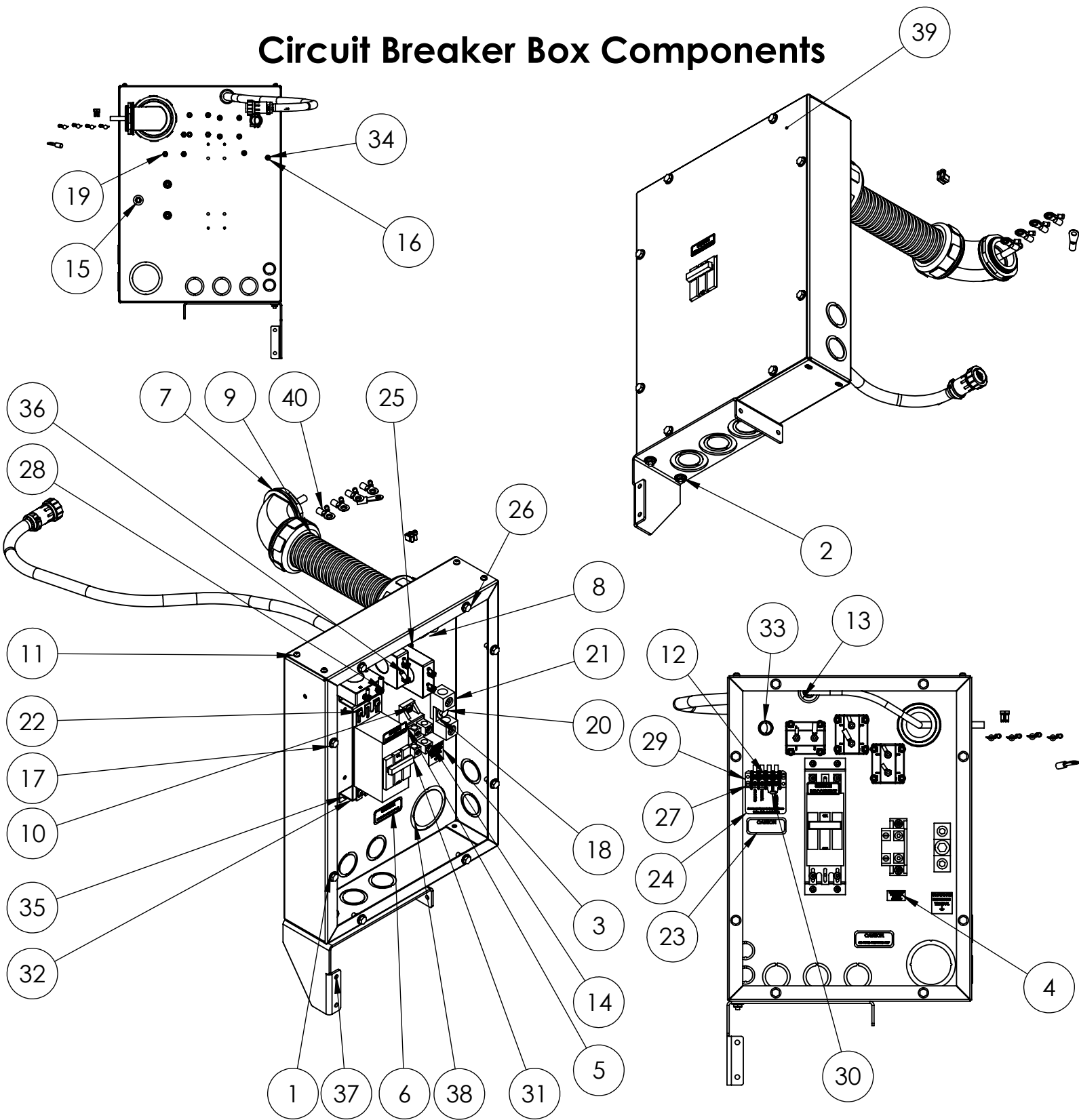
ITEM NO.	PART NUMBER	DESCRIPTION	EXPLODED VIEW/QTY.
1	16248-001*	.5-13 FLANGE NUT	4
2	21867-002	WASHER .5 X 1.375 X .146	4
3	57580-007	HHCS .5-13 X 3	4
4	60710-097	OIL WARNING TAG	1
5	91658-011	.375-16X.75 HHB	8
6	93824-003	PETCOCK VALVE 1/4 NPT 90 HOSE BARB	1
7	94282-035	M10-1.5X30MMM	12
8	97436-010	M10 LOCKWASHER	20
9	98806-002	WASHER SNUBBING 2.13 X .532 X .134THK	4
10	98906-009	OIL DRAIN VALVE M12-1.75 X 3/8 F-107N	1
11	99778-000	ADAPTER FITTING M12-1.75(M) X M12-1.75(F)	1

Circuit Breaker Box Installation



ITEM NO.	PART NUMBER	DESCRIPTION	EXPLODED VIEW/QTY.
1	65005-000	.25 WASHER SS	2
2	16248-000	.25-20 FLANGE NUT	6
3	466-000	.25-20X.75 HHB	4
4	512-000	.25 WASHER	4
5	65000-001	.25-20X.75 SS HHCS	2

Circuit Breaker Box Components



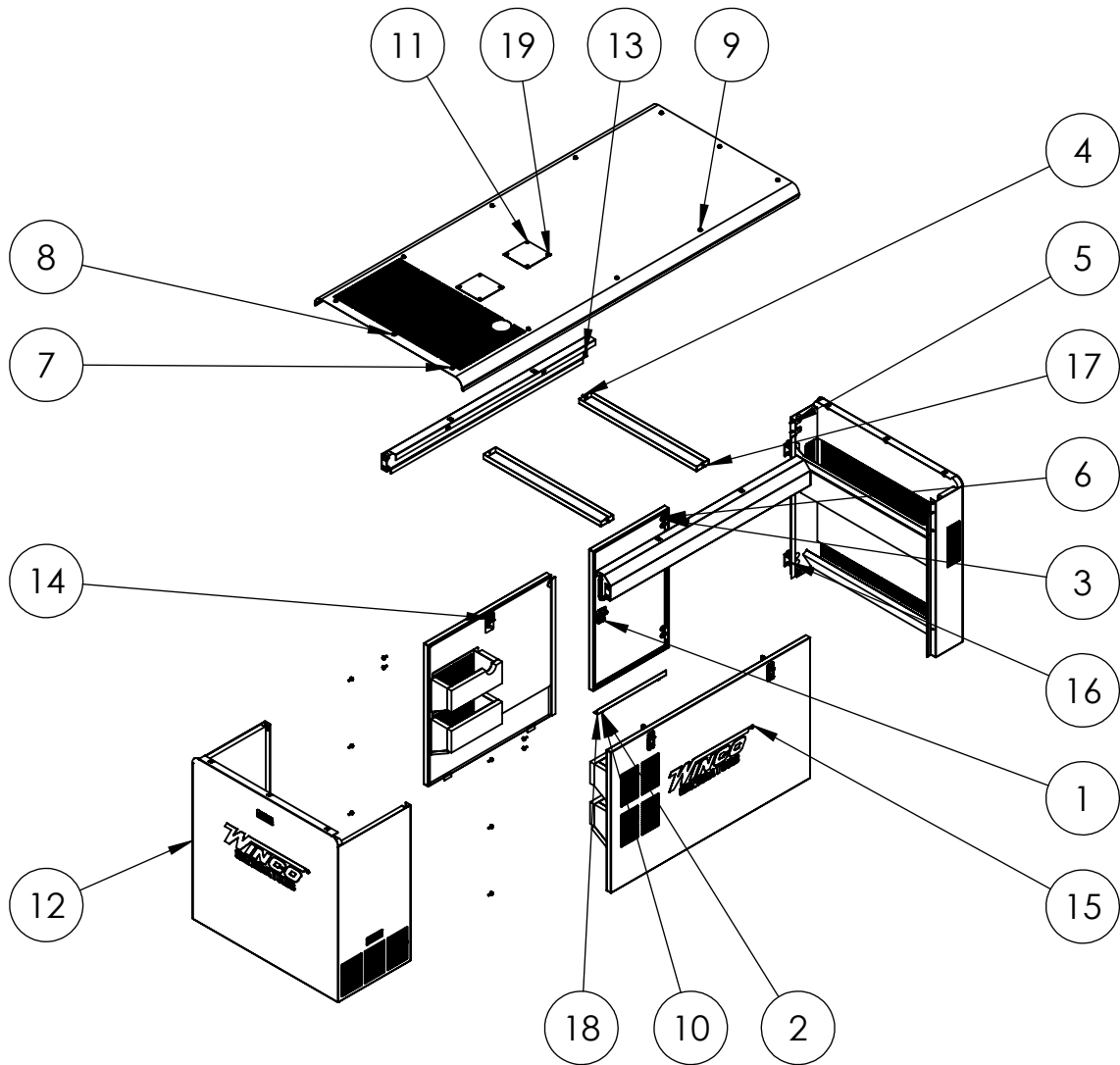
MODEL	CB	CB COVER	RISER	CT'S	AC HARNESS
PSS21-3	58805-005	99826-070	92072-005	80126-003	99347-020
PSS21-4 OR -17	82584-002	99826-073	92072-005	80126-002	99347-019
PSS21-18	81097-085	99826-095	92072-012	80126-001	99347-019
PSS30-3	58805-006	99826-070	92072-005	80126-003	99347-020
PSS30-4 OR -17	82584-004	99826-073	92072-005	80126-002	99347-019
PSS30-18	81097-002	99826-074	92072-006	80126-001	99347-019

* PSS21-18/1 CB is discontinued, order CB, CB Cover and Riser from list above for replacement.

Circuit Breaker Box Parts List

ITEM NO.	PART NUMBER	DESCRIPTION	EXPLODED VIEW/QTY.
1	15376-001	PUSH NUT BOLT RETAINER	8
2	16248-000	.25-20 FLANGE NUT	4
3	16499-000	UL-DECAL-GROUNDING-WHITE	1
4	16501-000	DECAL-FLOATING NEUTRAL	1
5	16502-001	DECAL-AC POWER DISCONNECT	1
6	16503-000	DECAL-COPPER CONDUCTORS ONLY	1
7	16522-001	2 IN FLEXIBLE CONDUIT FITTING	1
8	16522-000	2" FLEXIBLE CONDUIT STRAIGHT BLACK	1
9	16523-007	CONDUIT 9.75" LONG	1
10	21253-000	RHMS 1/4-20X .75	2
11	21698-001	TORX PAN HEAD SCREW #10	12
12	22370-006	TERMINAL SPADE 16-14AWG #5-#6	6
13	23917-000	GROMMET .6875ID X 1	1
14	350124-3	NEUTRAL ASSEMBLY 100 AMP	1
15	47136-000	HEX NUT .3125-18 NYLON	1
16	511-000	#8 FLATWASHER	2
17	512-000	.25 WASHER	10
18	526-000	5/16 FLAT WASHER	2
19	5315-000	NUT HEX 10-24 NYLON	12
20	580-000	5/16-18X1.25	1
21	58060-000	TERMINAL GROUND LUG	2
22	598-000	#10 WASHER	28
23	63941-005	DECAL-CIRCUIT REMAINS ENERGIZED	1
24	64576-020	DECAL-GFCI PROTECTED UTILITY 4P	1
25	64872-000	SOC.HCS 10-24 X 3/4 BLK	12
26	65000-001	.25-20X.75 SS HHCS	10
27	7614-000	RHMS 8-32 X .75	2
28	SEE PAGE 11	CT 100:5 PANEL MOUNT	3
29	80623-008	TERMINAL BLOCK, 4PT, 20A	1
30	80623-013	2 POLE TERMINAL BLOCK JUMPER	1
31	SEE PAGE 11	CIRCUIT BREAKER 100 AMP	1
32	SEE PAGE 11	CB RISER	1
33	93073-000	CONNECTOR, BOX, 1/2 INCH	1
34	95985-000	NUT HEX #8-32 NYLON	2
35	96286-002	FLAT WASHER NYLON	8
36	99347-019	PSS30 CELL 3	1
37	99826-056	CB BOX SUPPORT	1
38	99826-072	CB BOX	1
39	SEE PAGE 11	CB COVER	1
40	99830-047	CB WIRING	1

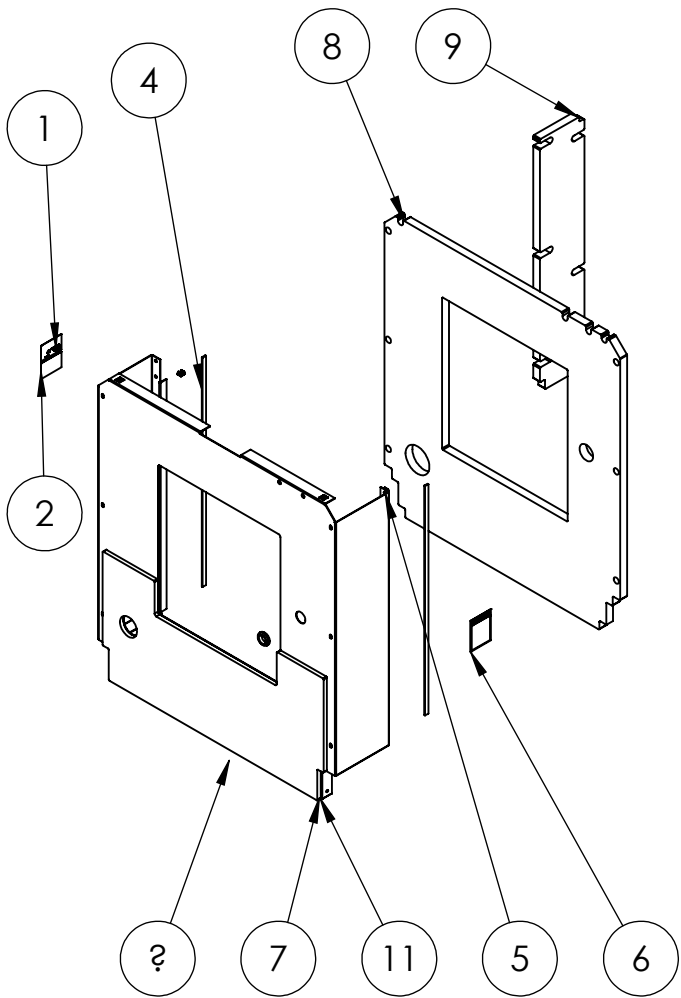
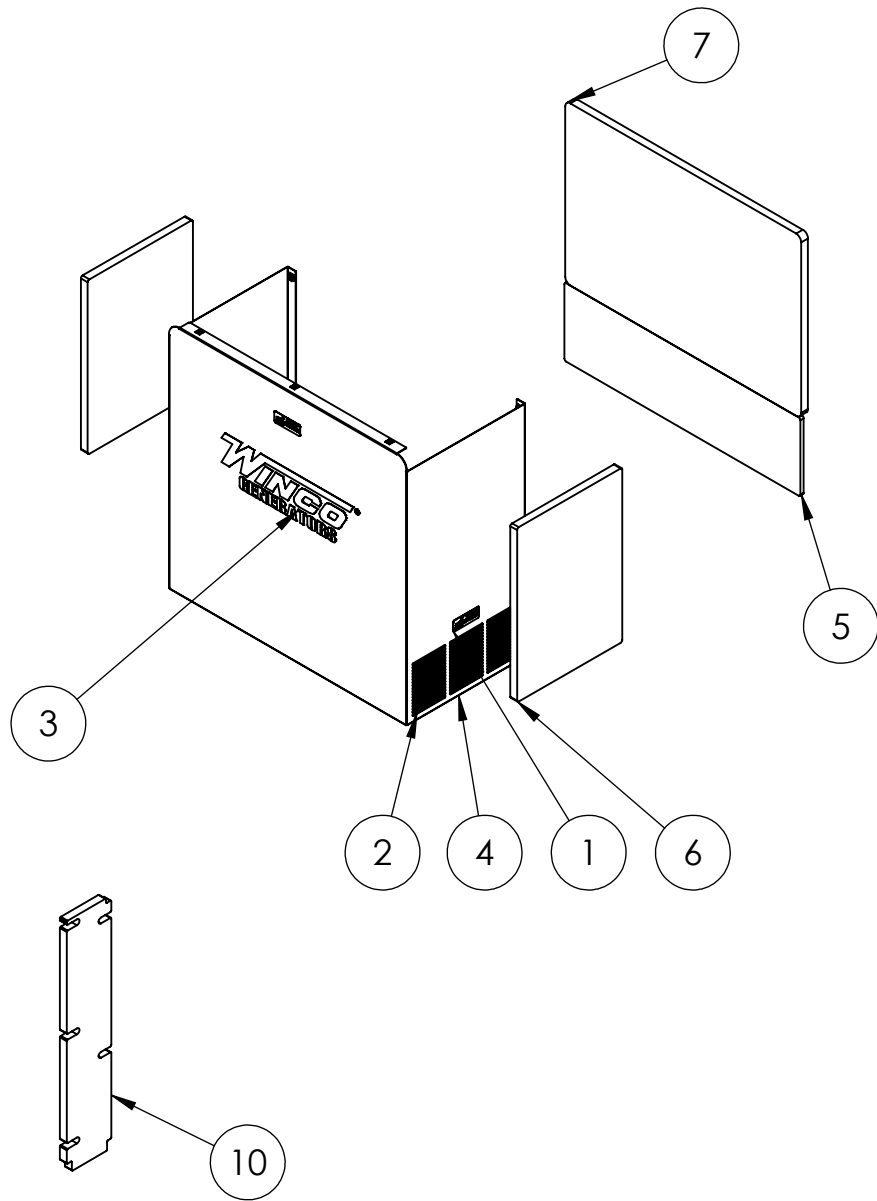
Housing Assemblies



ITEM NO.	PART NUMBER	DESCRIPTION	EXPLODED VIEW/QTY.
1	15680-073	DOOR ASSEMBLY	1
2	16248-000	.25-20 FLANGE NUT	2
3	16446-000	M8-1.25 NYLOCK	4
4	466-000	.25-20X.75 HHB	23
5	512-000	.25 WASHER	23
6	526-000	5/16 FLAT WASHER	4
7	65000-001	.25-20X.75 SS HHCS	12
8	65003-000	SS LOCK WASHER ID.25 OD.475 TH.07	12
9	65005-000	.25 WASHER SS	12
10	94980-001	THREAD STUD .25-20X.625	2
11	99060-016	ROOF COVER ASSEMBLY	2
12	99071-065	HOUSING, FRONT END	1
13	99078-127	SIDE SILL ASSEMBLY	2
14	99100-026	RIGHT SIDE PANEL WITH FOAM	1
15	99100-027	LEFT PANEL WITH FOAM	1
16	99100-028	REAR HOUSING ASSEMBLY	1
17	99225-007	ROOF SUPPORT	2
18	99333-020	DOOR STOP	1
19	99515-034	ROOF WITH FOAM	1

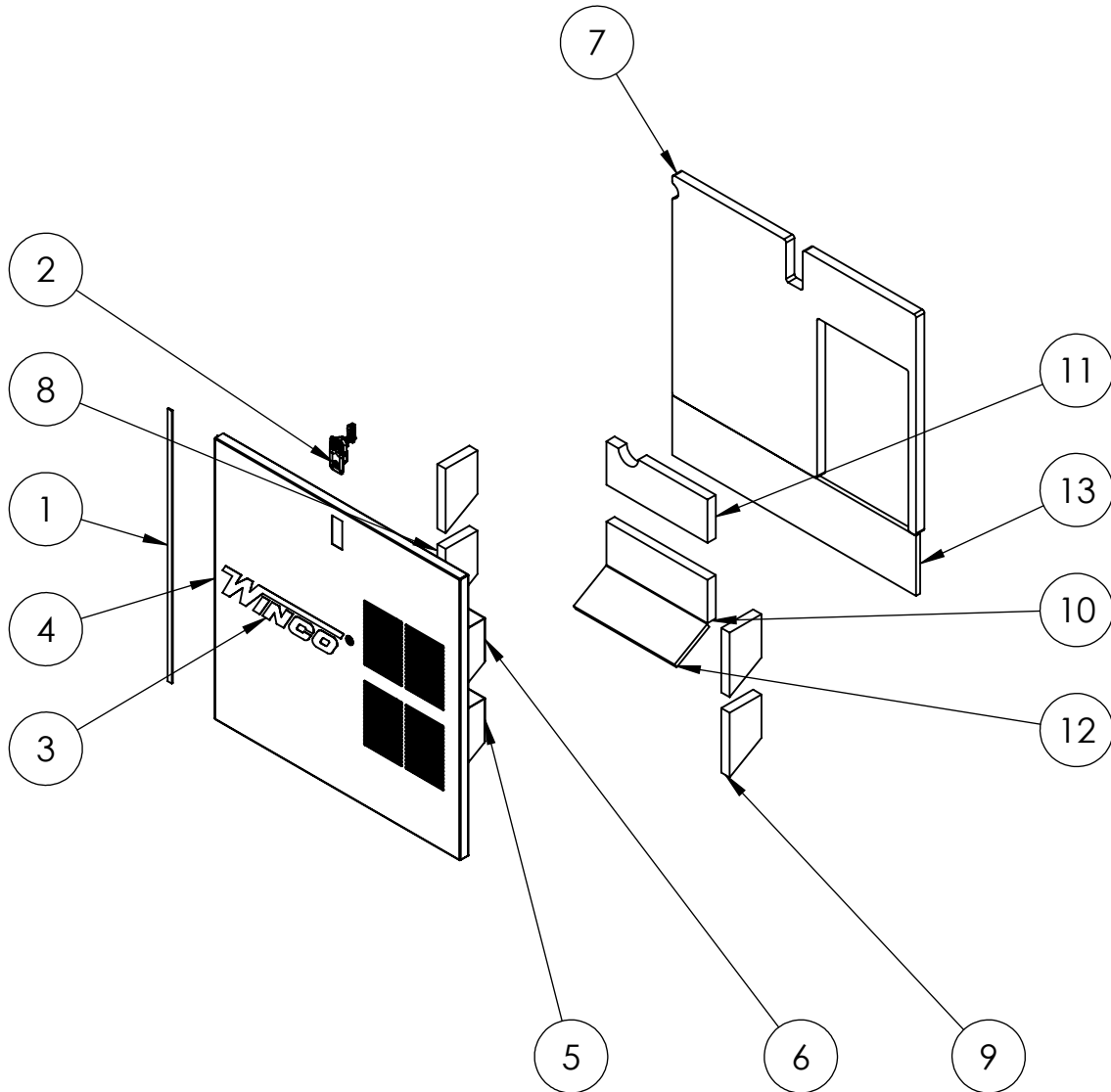
Housing Snorkle and Radiator Assemblies

ITEM NO.	PART NUMBER	DESCRIPTION	EXPLODED VIEW/QTY.
1	63941-001	DECAL -HOT SURFACES	3
2	92495-000	.25-20 TINNERMAN	13
3	98313-001	WINCO LOGO	1
4	99071-065	HOUSING, FRONT END	1
5	99393-161	SNORKLE BOTTOM	1
6	99393-225	SNORKLE TOP SIDE	2
7	99393-226	SNORKLE FRONT TOP	1



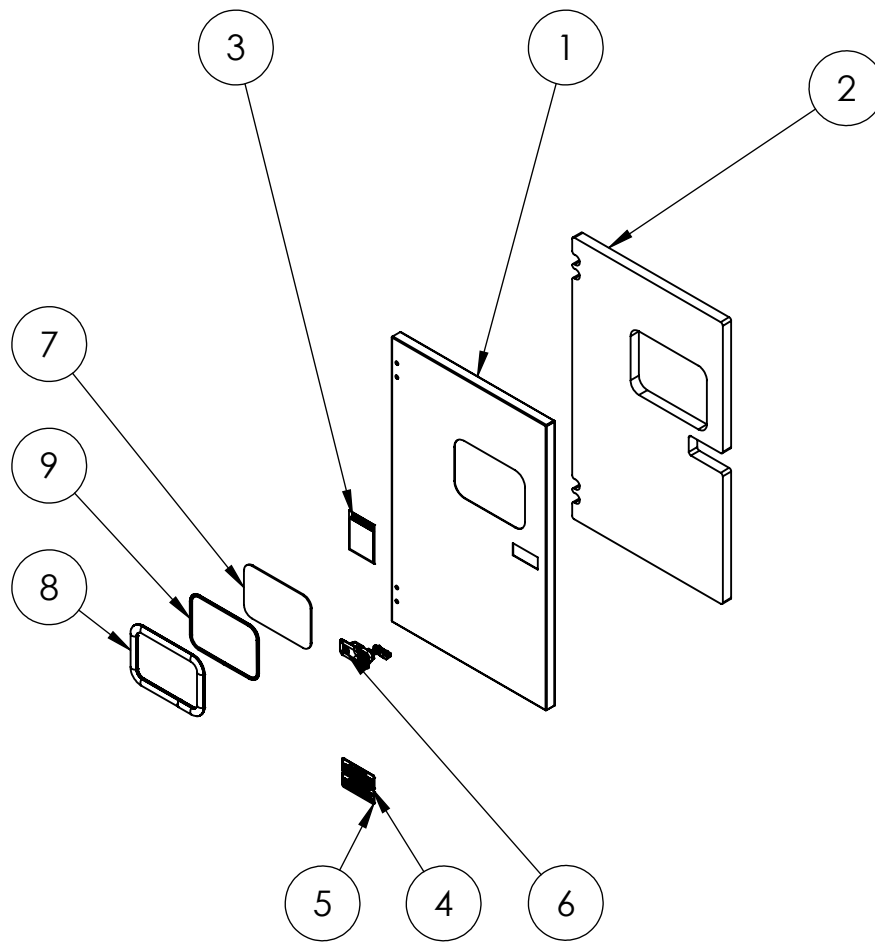
ITEM NO.	PART NUMBER	DESCRIPTION	EXPLODED VIEW/QTY.
1	15209-002	DECAL-DANGER CARBON MONOXIDE	1
2	15209-102	DECAL-DANGER CARBON MONOXIDE	1
3	62486-000	GROMMET 1 X 1.375	1
4	62912-000	.500 X .125 FOAM 29.25 LONG	2
5	92495-000	.25-20 TINNERMAN	2
6	97813-000	DECAL-WARNING CYCLE CRANK	1
7	99071-064	RAD HOUSING	1
8	99393-208	RAD HOUSING FOAM	1
9	99393-209	RAD SIDE FOAM	1
10	99393-210	RAD SIDE FOAM LEFT	1
11	99393-224	RAD HOUSING EXHAUST FOAM, BOTTOM	1

Housing Panels and Door



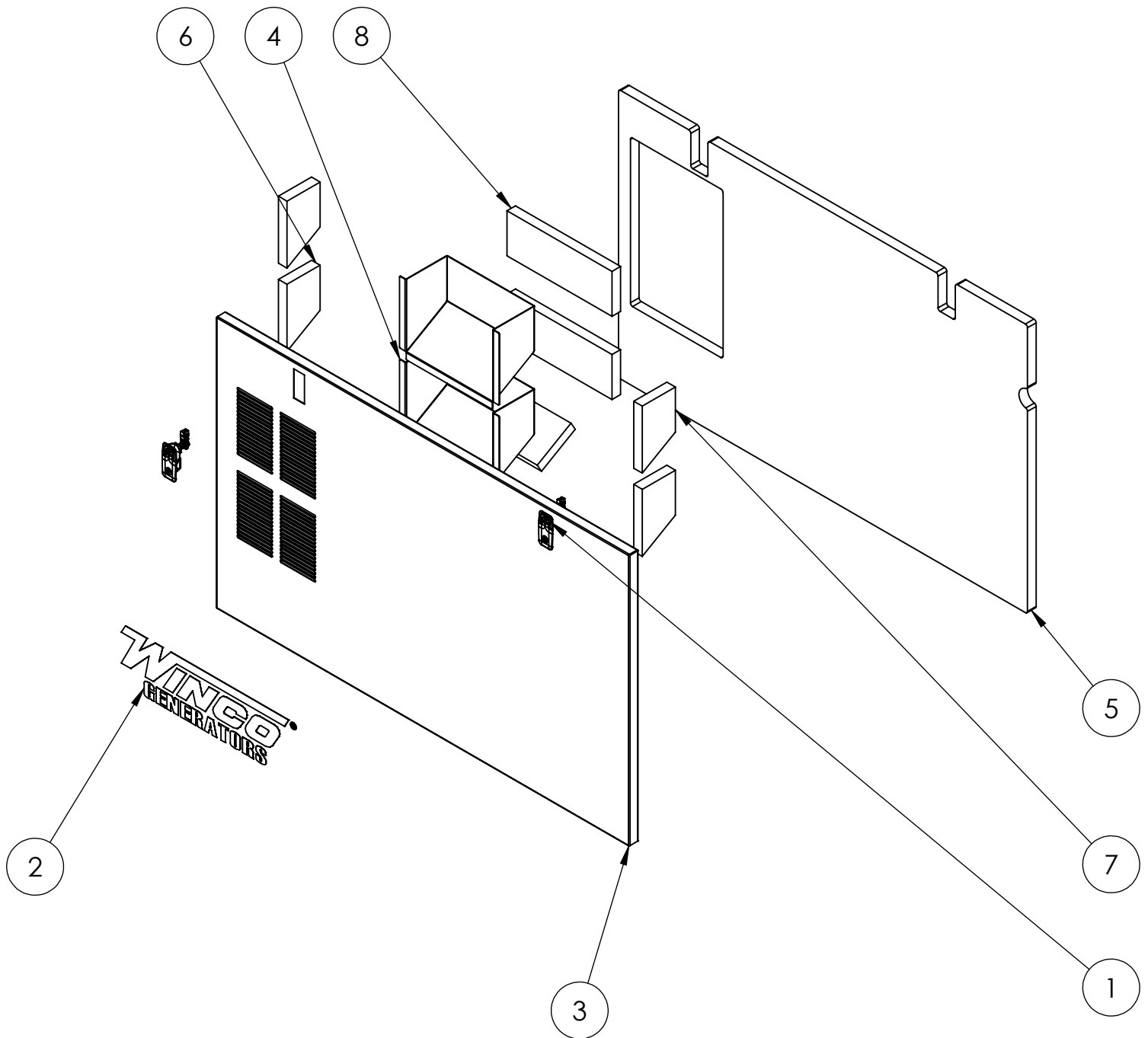
ITEM NO.	PART NUMBER	DESCRIPTION	EXPLODED VIEW/QTY.
1	62912-000	FOAM STRIP 28 7/16"	1
2	95229-004	LATCH	1
3	97993-017	WINCO DECAL	1
4	99100-026	RIGHT SIDE PANEL	1
5	99100-029	SIDE PANEL BAFFLE	1
6	99100-054	SIDE PANEL BAFFLE, TOP, AIR FILTER SIDE	1
7	99393-217	RIGHT SIDE PANEL FOAM	1
8	99393-220	SIDE PANEL BAFFLE SIDE FOAM RIGHT	2
9	99393-221	SIDE PANEL BAFFLE SIDE FOAM LEFT	2
10	99393-222	SIDE PANEL BAFFLE SIDE FOAM BACK	1
11	99393-223	SIDE PANEL BAFFLE SIDE FOAM TOP, AIR FILTER SIDE	1
12	99393-251	SIDE PANEL BAFFLE SIDE FOAM BACK	1
13	99393-252	DOOR FOAM	1

Housing Panels and Door



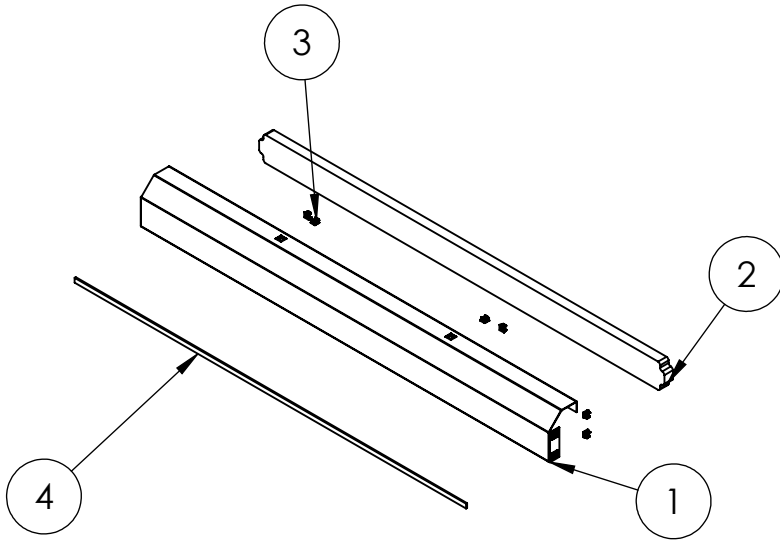
ITEM NO.	PartNo	DESCRIPTION	QTY.
1	15680-073	DOOR	1
2	99393-207	DOOR FOAM	1
3	97813-000	DECAL-WARNING CYCLE CRANK	1
4	63941-003	DECAL-WARNING NO SPARK	1
5	63941-103	DECAL-WARNING NO SPARK	1
6	95229-004	LATCH	1
7	351556-1	WINDOW PANEL	1
8	351597	WEATHER STRIP WINDOW SEAL	1
9	351597-1	WEATHER SEAL LOCKING STRIP	1

Housing Panels and Door



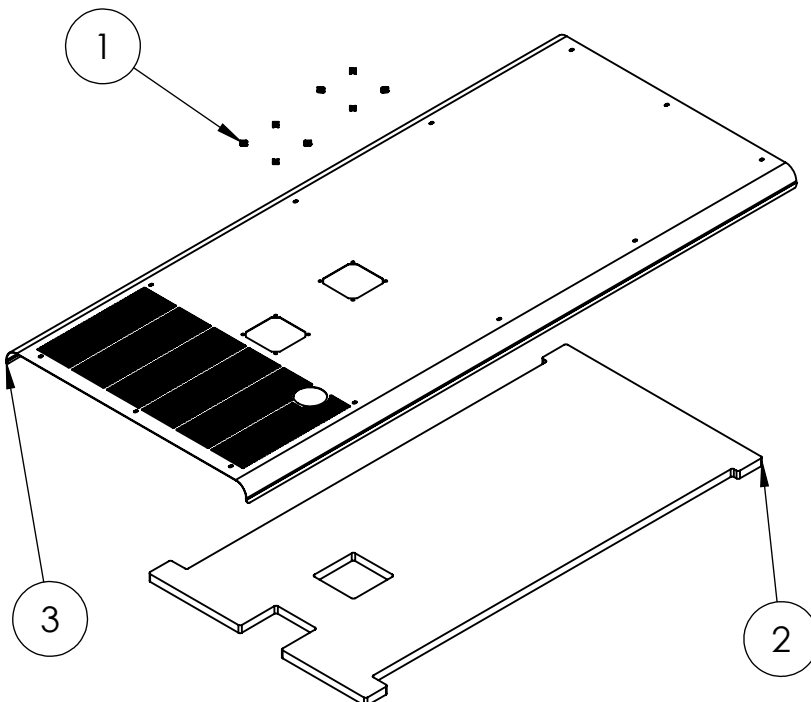
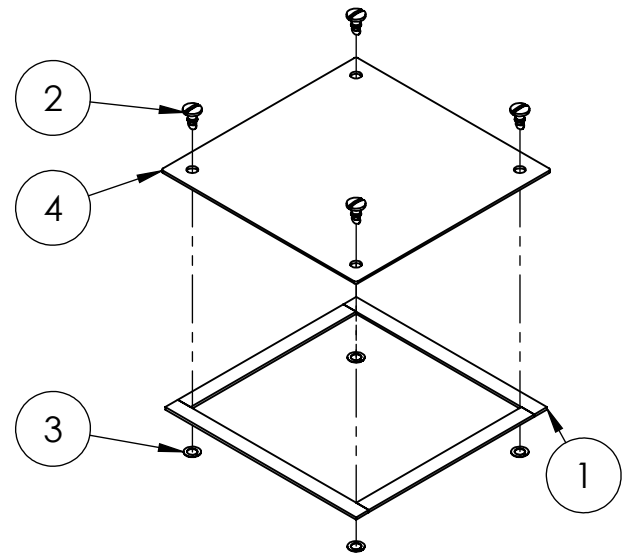
ITEM NO.	PART NUMBER	DESCRIPTION	EXPLODED VIEW/QTY.
1	95229-004	LATCH	2
2	98313-001	WINCO LOGO	1
3	99100-027	LEFT SIDE PANEL	1
4	99100-029	SIDE PANEL BAFFLE	2
5	99393-218	LEFT SIDE PANEL FOAM	1
6	99393-220	SIDE PANEL BAFFLE SIDE FOAM RIGHT	2
7	99393-221	SIDE PANEL BAFFLE SIDE FOAM LEFT	2
8	99393-222	SIDE PANEL BAFFLE SIDE FOAM BACK	3

Side Sill and Roof Components



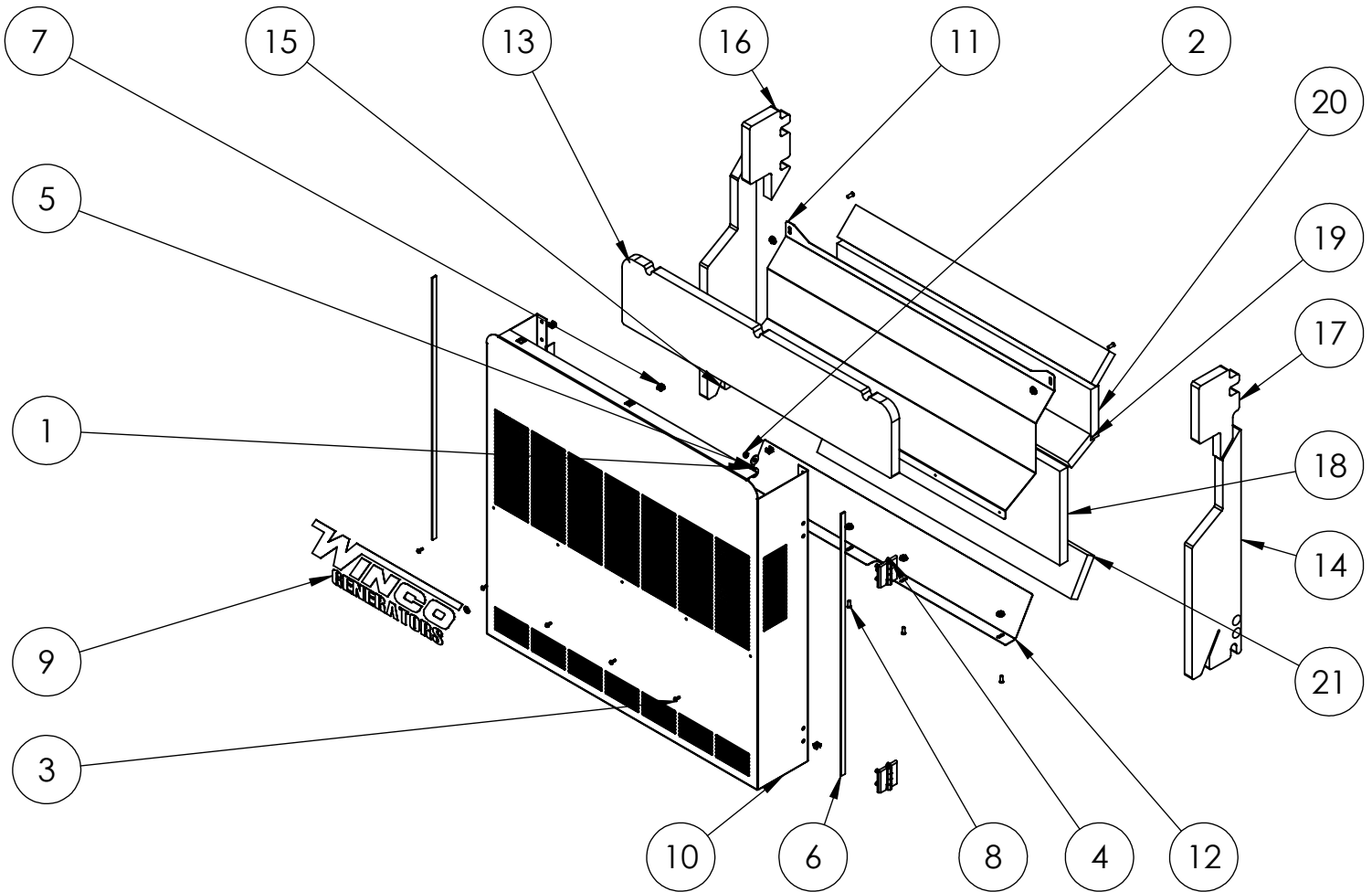
ITEM NO.	PART NUMBER	DESCRIPTION	EXPLODED VIEW/QTY.
1	99078-127	SIDE SILL	1
2	99393-181	SIDE SILL FOAM	1
3	92495-000	.25-20 TINNERMAN	8
4	62912-000	.500 X .125 FOAM 50.125 LONG	1

ITEM NO.	PART NUMBER	DESCRIPTION	EXPLODED VIEW/QTY.
1	62912-002	FOAM STRIP 1/16 X 3/8 5.625" LONG	2
2	91682-001	STUD 1/4 TURN SLOTTED	4
3	91684-000	RETAINER RING 1/4 TURN SPLIT RING	4
4	99060-016	ROOF COVER	1



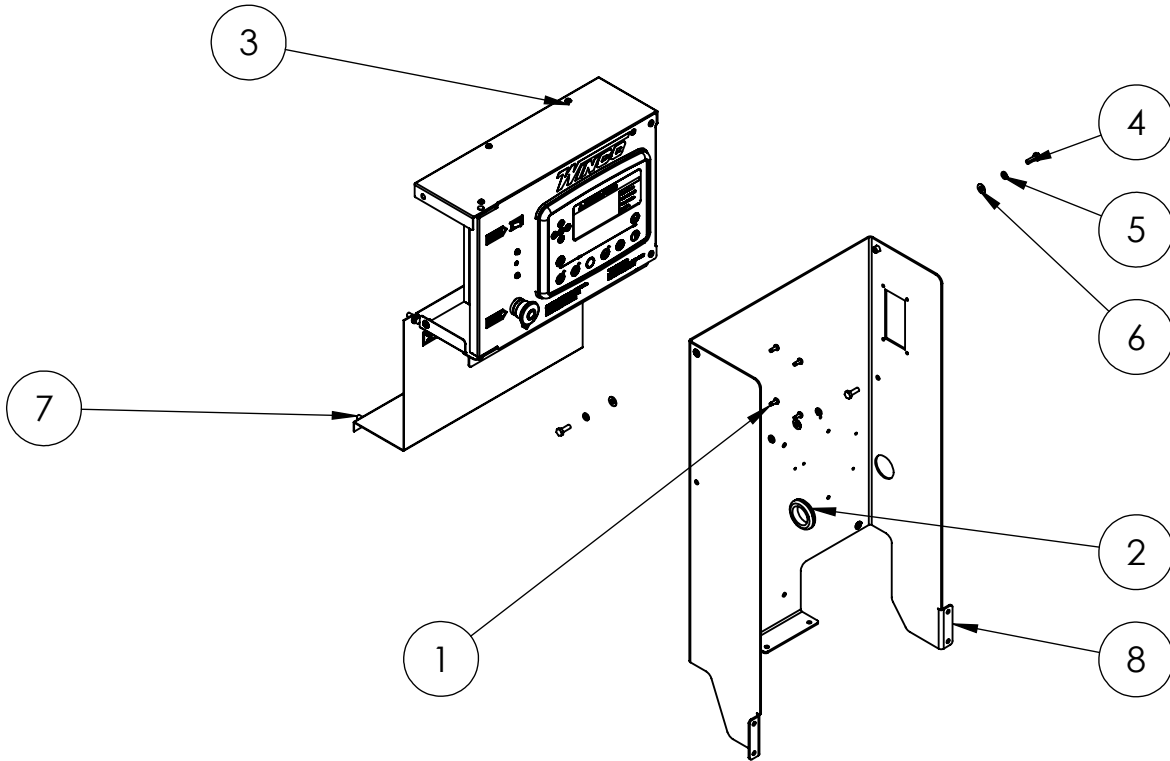
ITEM NO.	PART NUMBER	DESCRIPTION	EXPLODED VIEW/QTY.
1	91683-000	1/4 TURN CLIP NUT	8
2	99393-215	ROOF FOAM	1
3	99515-034	ROOF	1

Housing Rear Assemblies

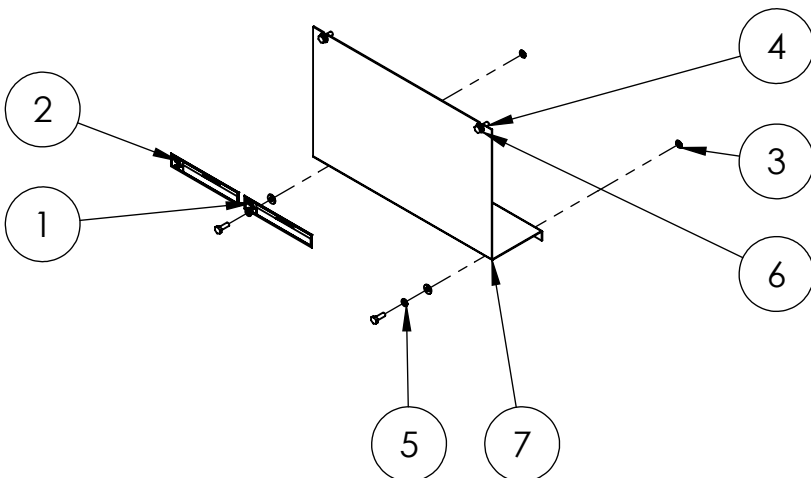


ITEM NO.	PART NUMBER	DESCRIPTION	EXPLODED VIEW/QTY.
1	16248-000	.25-20 FLANGE NUT	6
2	16446-000	M8-1.25 NYLOCK	4
3	21698-001	TORX PAN HEAD SCREW #10	5
4	350054-5	HINGE BLACK	2
5	526-000	5/16 FLAT WASHER	4
6	62912-000	.500 X .125 FOAM 29.25 LONG	2
7	92495-000	.25-20 TINNEMAN	8
8	94980-001	THREAD STUD .25-20X.625	6
9	98313-001	WINCO LOGO	1
10	99100-028	REAR HOUSING	1
11	99100-051	REAR TOP BAFFLE	1
12	99100-052	REAR BOTTOM BAFFLE	1
13	99393-241	REAR TOP FOAM	1
14	99393-242	REAR SIDE FOAM WITH HINGE	1
15	99393-243	REAR SIDE FOAM	1
16	99393-244	REAR SIDE FOAM TOP	1
17	99393-245	REAR SIDE FOAM WITH HINGE	1
18	99393-246	REAR BOTTOM FOAM	1
19	99393-247	REAR TOP BAFFLE FOAM	2
20	99393-248	REAR TOP FOAM	1
21	99393-249	REAR BOTTOM BAFFLE FOAM	1

Engine Control Assembly

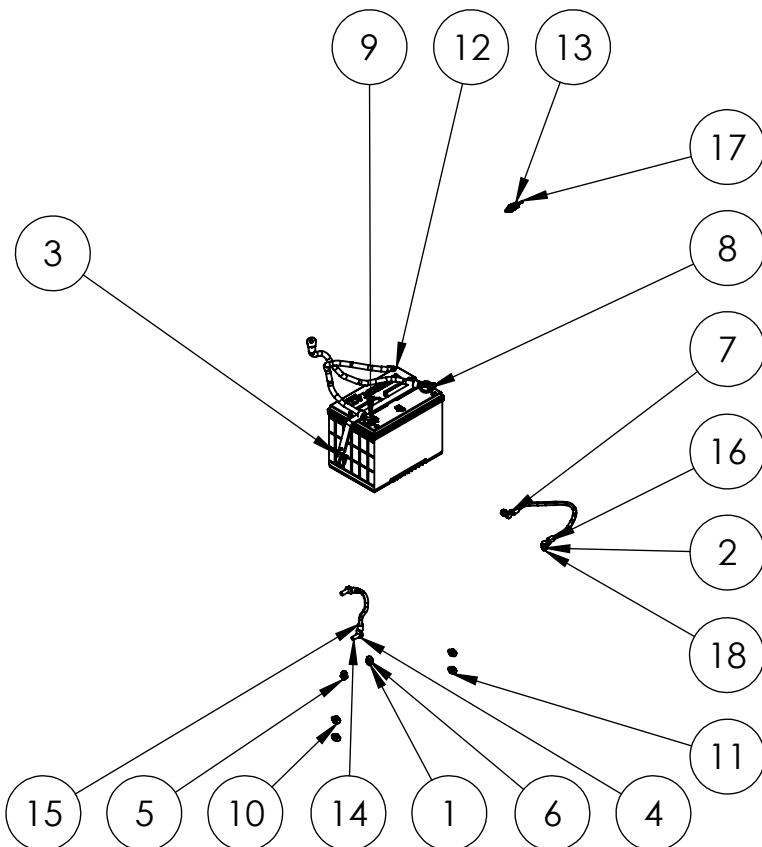
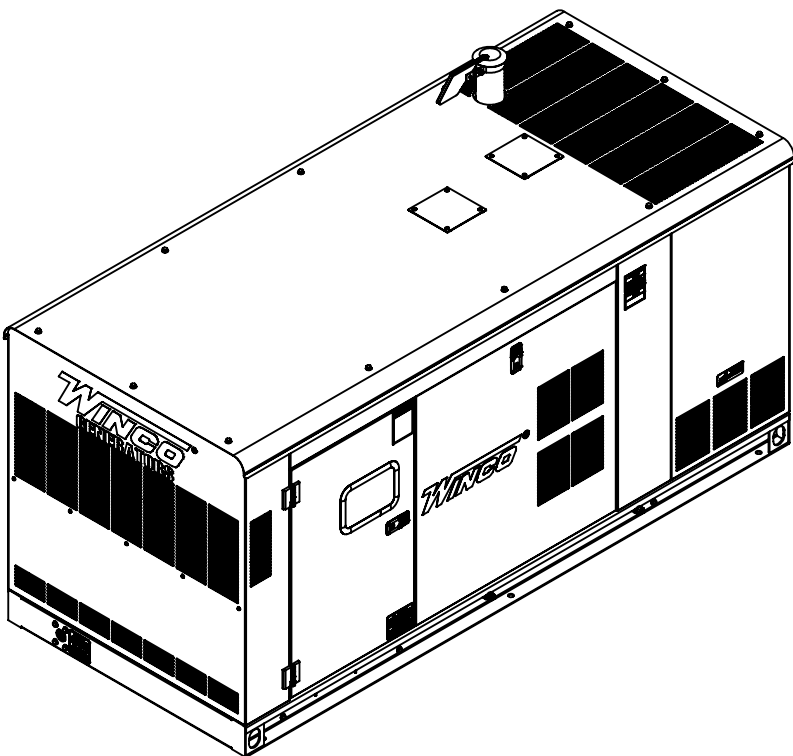


ITEM NO.	PART NUMBER	DESCRIPTION	EXPLODED VIEW/QTY.
1	21698-001	TORX PAN HEAD SCREW #10	4
2	23917-005	GROMMET 1-5/16" ID	1
3	351891-51	ECU ENGINE CONTROLLER	1
4	466-000	.25-20X.75 HHB	4
5	479-000	LOCK WASHER .25IN ID.	4
6	512-000	.25 WASHER	4
7	99826-038	BATTERY CHARGER COVER	1
8	99826-145	CONTROL PEDISTAL	1



ITEM NO.	PART NUMBER	DESCRIPTION	EXPLODED VIEW/QTY.
1	15209-100	UL-DECAL ELECTRICAL SHOCK CAN KILL (FRENCH)	1
2	15209-000	UL-DECAL ELECTRICAL SHOCK CAN KILL	1
3	15376-001	PUSH NUT BOLT RETAINER	4
4	466-000	.25-20X.75 HHB	4
5	479-000	LOCK WASHER .25IN ID.	4
6	512-000	.25 WASHER	4
7	99826-038	BATTERY CHARGER COVER	1

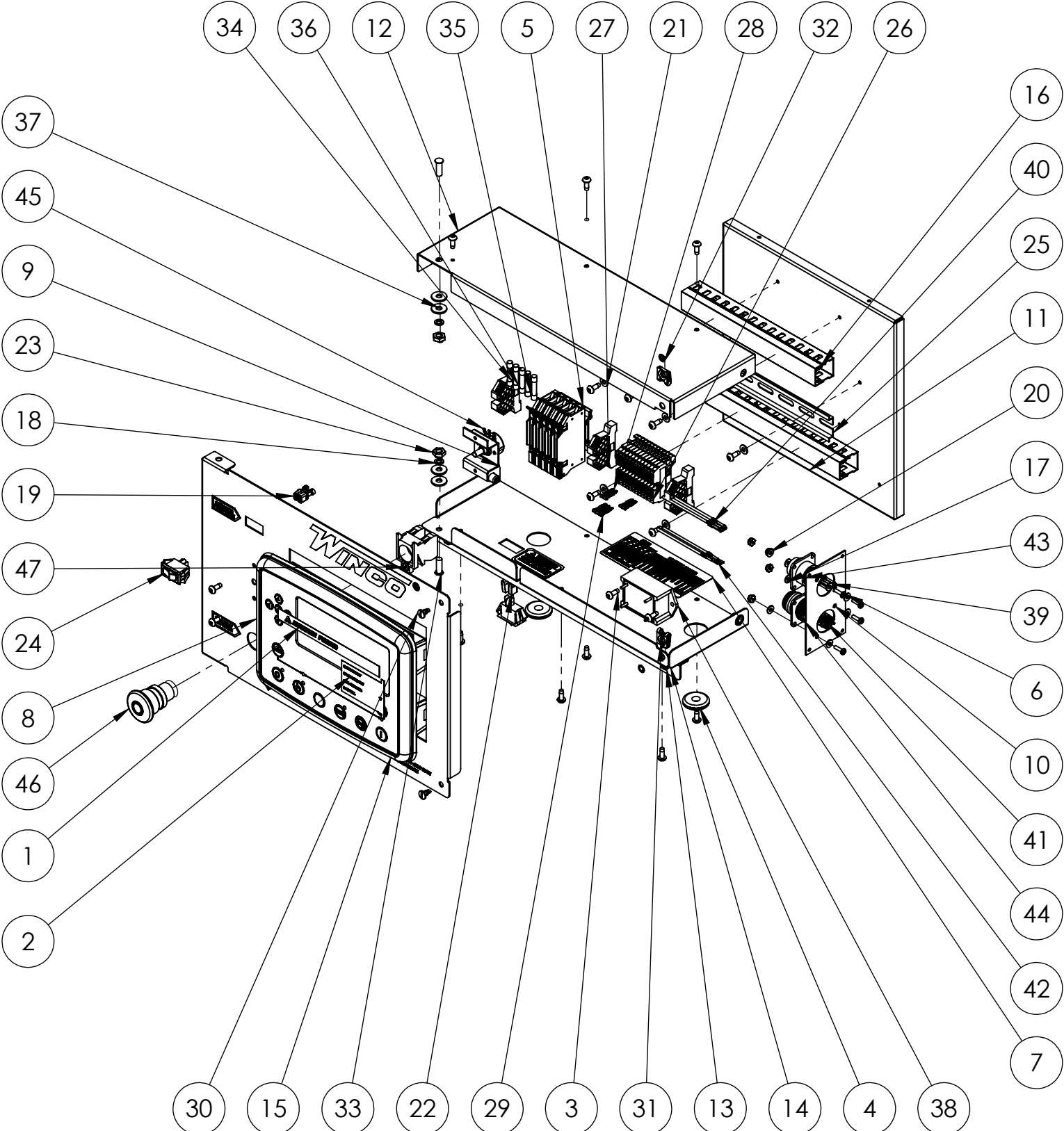
Control Assembly and Cables



ITEM NO.	PART NUMBER	DESCRIPTION	EXPLODED VIEW/QTY.
1	16248-000	.25-20 FLANGE NUT	6
2	16249-000	.3125-18 FLANGE	2
3	16329-001	RUBBER STRAP, BATTERY HOLD DOWN.	1
4	4516-001	LOCKWASHER 3/8 EXTERNAL TOOTH	2
5	466-000	.25-20X.75 HHB	2
6	512-000	.25 WASHER	2
7	52224-000	LOCK WASHER 5/16 EXTERNAL TOOTH	2
8	53220-012	BATTERY CABLE ASSY	1
9	53220-039	BATTERY CABLE ASSY	1
10	65000-001	.25-20X.75 SS HHCS	4
11	65005-000	.25 WASHER SS	4
12	80765-010	BATTERY 12V 650CCA GROUP 24	1
13	80951-000	HEX REDU.BUSH. 1/4X1/8	1
14	91658-001	.375-16 X 1 HHB	2
15	93542-018	LEAD WIRE	1
16	93542-018	LEAD WIRE ASSY	1
17	96333-002	LOW COOLANT PROBE	1
18	467-000	HHCS 5/16-18X.75	2

BATTERY CHARGERS	
5 AMP	352020-18
10 AMP NFPA	352020-20

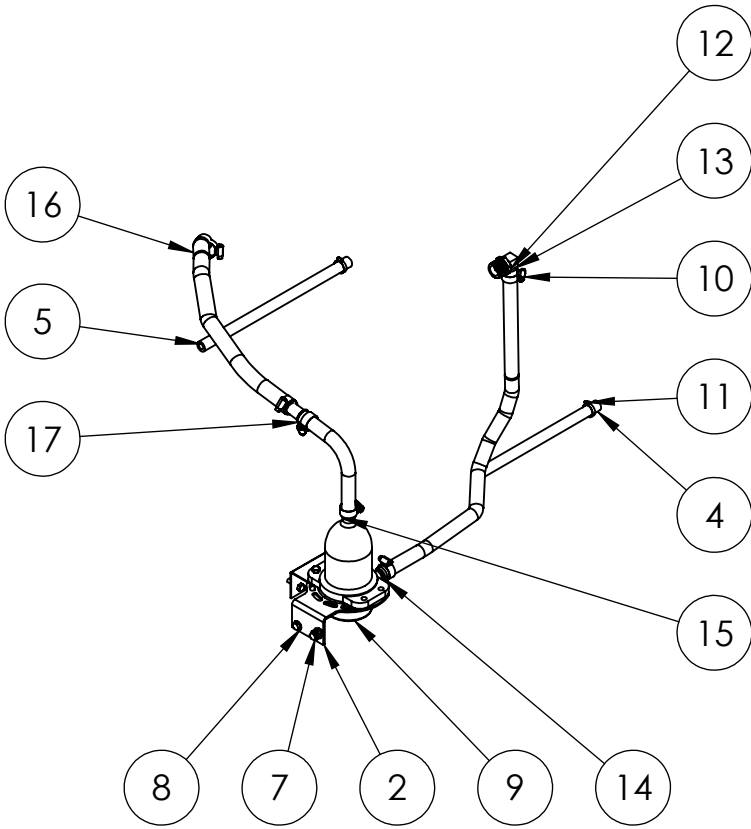
Engine Control



Engine Control

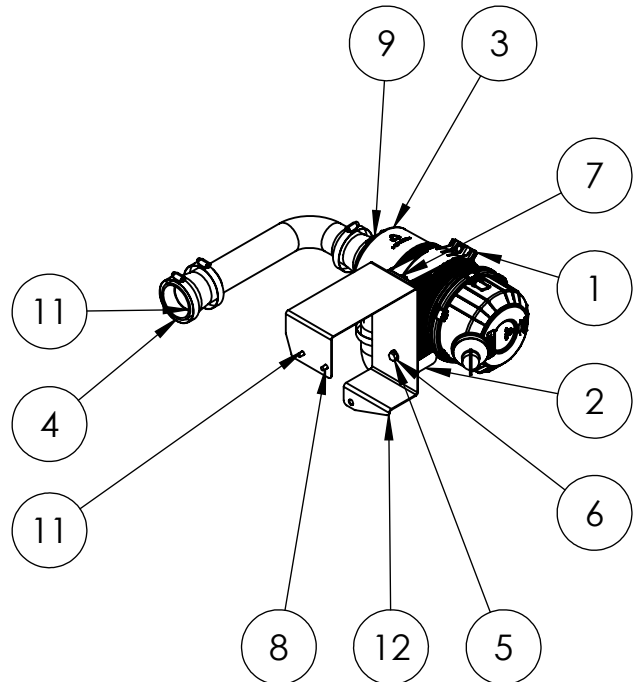
ITEM NO.	PART NUMBER	DESCRIPTION	EXPLODED VIEW/QTY.
1	16600-005	DSE MKII ADVANCE POWER LOGO INSERT	1
2	16601-005	DSE 8610 MKII LIGHT LEGEND CARD INSERT	1
3	21698-001	TORX PAN HEAD SCREW #10	18
4	23917-002	GROMMET, .375ID X 1	2
5	2489-003	DIN RAIL FUSE HOLDER 1-1/4 X 1/4IN	5
6	24988-000	SCREW 6-32 X 1/2 BIND	4
7	351095-16	DECAL, FUSES AND TERMINAL BLOCKS	1
8	351112-29	DEEP SEA ELECTRONICS 7310 MKII	1
9	351900-36	RHEOSTAT MOUNTING BRACKET	1
10	351900-37	PLUG MOUNTING PLATE	1
11	351900-42	DIN RAIL MOUNTING PLATE	1
12	351900-43	DSE 8610 MKII CONTROL BOX TOP	1
13	351900-44	COVER SUPPORT BRACKET	1
14	351900-45	DSE8610 CONTROL BOX BOTTOM	1
15	351900-47	DSE 7310 MKII FRONT PANEL	1
16	352017-001	WIRE DUCT, 8.5IN	2
17	425-000	#6 FLATWASHER	8
18	479-000	LOCK WASHER, .25" SPLIT	2
19	48602-003	TERMINAL FEMALE 16-14 AWG .250 TAB	2
20	51802-000	NUT HEX #6-32 NYLOCK	4
21	598-000	#10 WASHER	6
22	61898-000	TERMINAL FLAG 16/14AWG .250	2
23	638-000	HEX NUT, .25IN	2
24	64089-000	SPST, ROCKER SWITCH	2
25	64551-005	DIN RAIL 9.5"	1
26	80623-009	TERMINAL BLOCK, DIN MOUNTED, SPRING CAGE	12
27	80623-010	END BLOCK, DIN MOUNTED	3
28	80623-011	2-POLE TERMINAL BLOCK JUMPER	2
29	80623-012	3-POLE TERMINAL BLOCK JUMPER	1
30	91682-001	STUD 1/4 TURN SLOTTED	2
31	91683-000	1/4 TURN CLIP NUT	2
32	91684-000	RETAINER RING 1/4 TURN SPLIT RING	2
33	94980-003	THREAD STUD .25-20 X .750	2
34	95064-006	FUSE AGC 10 AMP	1
35	95064-008	FUSE AGC 2 AMP	3
36	95064-000	FUSE AGC 3 AMP	1
37	96286-001	1/4" NYLON WASHER	4
38	96333-001	LOW COOLANT MODULE	1
39	96923-001	TERMINAL, SOCKET, 18-16AWG	10
40	96923-101	PLUG TERMINAL	4
41	96924-001	TERMINAL, PIN, 18-16AWG	13
42	96924-101	PLUG TERMINAL	3
43	96925-002	14 PIN CONNECTOR	1
44	96925-006	16 PIN CONNECTOR	1
45	97517-001	REOSTAT	1
46	99783-001	SWITCH, PUSH-PULL	1
47	99783-002	SWITCH CONTACT	1
48	63941-004	DECAL FUSE WARNING (ENGLISH)	1

Misc. Assemblies

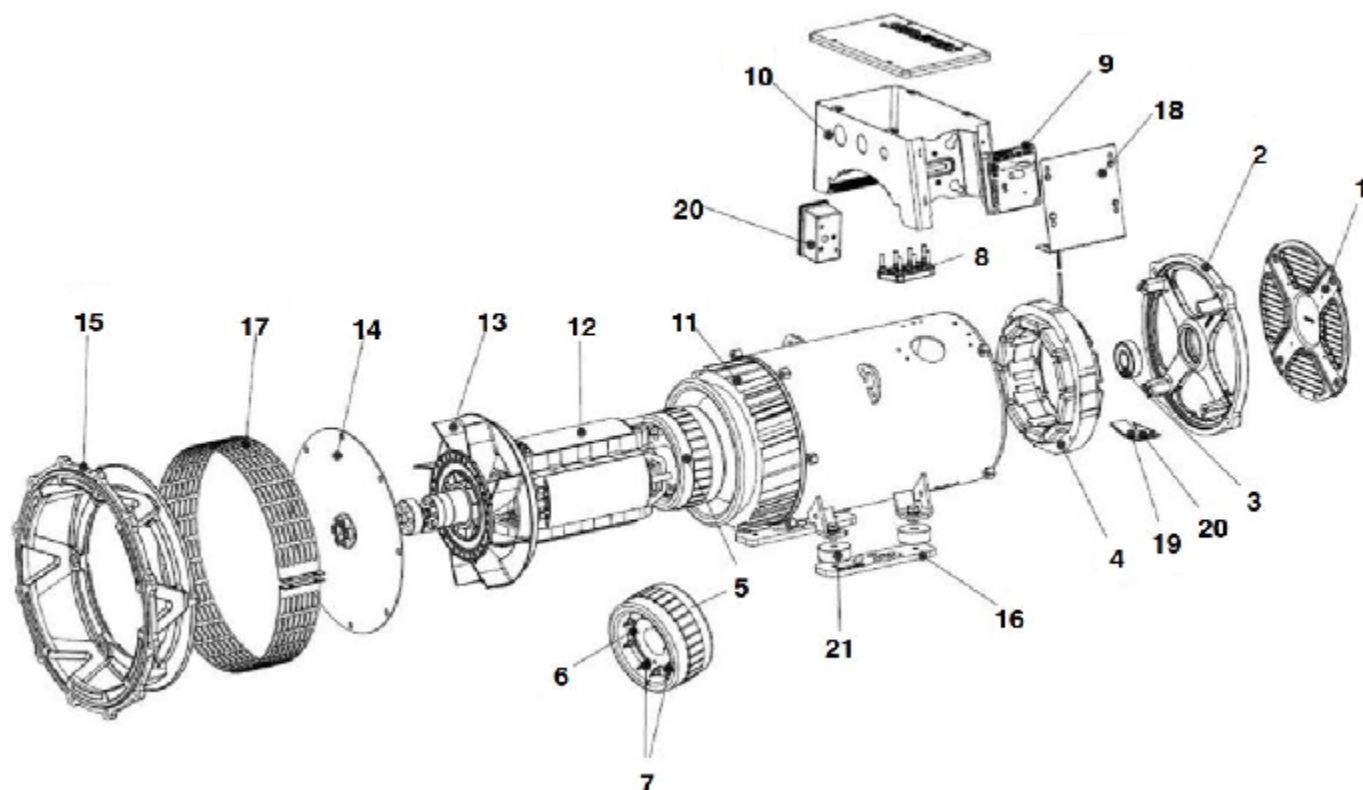


ITEM NO.	PART NUMBER	DESCRIPTION	EXPLODED VIEW/QTY.
1	16248-000	.25-20 FLANGE NUT	2
2	351929-2	BLOCK HEATER BRACKET	1
3	49975-014	STAINLESS STEEL CABLE TIE 8"	2
4	55505-000	.375 HOSE 10.5" LONG	1
5	55505-000	.375 HOSE 13" LONG	1
6	62625-004 20	20" HEAT SLEEVE	1
7	65000-001	.25-20X.75 SS HHCS	2
8	65005-000	.25 WASHER SS	2
9	80781-003	BLOCK HEATER WITH THERMOSTAT ASSY	1
10	81018-005	HOSE CLAMP 1.0625-.500	6
11	81018-008	HOSE CLAMP .875-.25	2
12	81075-000	HEX REDU.BUSH. 3/4X1/2	1
13	92382-001	HOSE FIT.ELBOW .500NPT X .625 HOSE	1
14	93689-001	HOSE 34.5"	1
15	93689-001	HOSE, 0.625 ID, 11 IN. LONG	1
16	93689-000	HOSE 10"	1
17	98590-004	HEATER HOSE CONNECTOR	1

ITEM NO.	PART NUMBER	DESCRIPTION	EXPLODED VIEW/QTY.
1	352104-2	AIR FILTER MOUNTING BAND	1
2	352104-27	2.0" SILICONE ELBOW, BLACK	1
3	352104-3	FILTER HOUSING WITH ELEMENT	1
4	352104-7	2.0" TO 2.25" SILICONE INTAKE REDUCER, STRAIGHT	2
5	65001-002	.3125-18X1 HHB SS	2
6	65005-001	5/16 WASHER SS	4
7	65006-001	.3125-18 FLANGE NUT SS	2
8	75139-012	HHCS M6-1X12MM ZINC	2
9	81018-002	HOSE CLAMP 3-2.0625	5
10	93341-006	LOCKWASHER M6 ZINC	2
11	99298-045	INTAKE PIPE, PSS30	1
12	99309-178	AIR FILTER MOUNTING BRACKET	1



Generator End



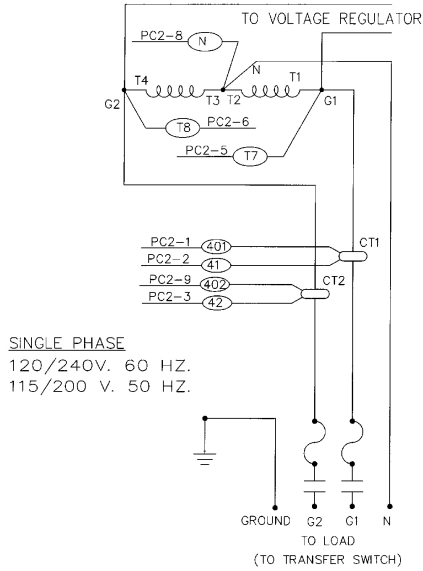
ITEM	DESCRIPTION	PSS21-3	PSS21-4, 17, 18	PSS30-3	PSS30-4, 17, 18	QTY
-	COMPLETE GENERATOR END	350023-7	350023-8	350023-3	350023-1	1
-	STAMFORD MODEL	S0L2-M1	S0L2-M1	S1L2-H1	S1L2-K1	-
-	WINDING	706	711	706	711	-
9	AVR AS540	8-101				1
For additional parts support contact WINCO service.						

EXPECTED RESISTANCE (Ω) @ 22C

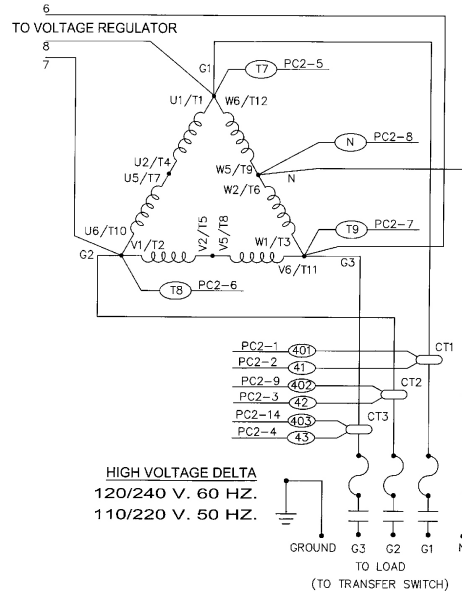
MODEL	S0L1 M1 706	S0L2-M1 711	S1L2-H1 706	S1L2-K1 711
STATOR WINDING (PER PHASE SERIES CONNECTED)	0.097	0.290	0.079	0.177
ROTOR WINDING	0.747		0.891	0.965
EXCITER STATOR	15.420		16.55	15.5
EXCITER ROTOR (PER PHASE)	0.106		0.100	0.112
POSSITIVE SEQUENCE (R1)	0.121	0.362	0.099	0.221
NEGATIVE SEQUENCE (R2)	0.139	0.417	0.114	0.255
ZERO SEQUENCE (R0)	0.121	0.362	0.099	0.221
AUX WINDING	2.570	5.160	2.388	3.91

Generator Connections

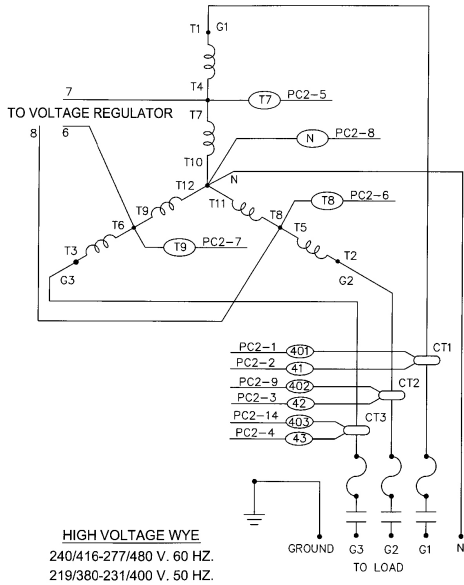
SINGLE PHASE 120/240 VOLTS



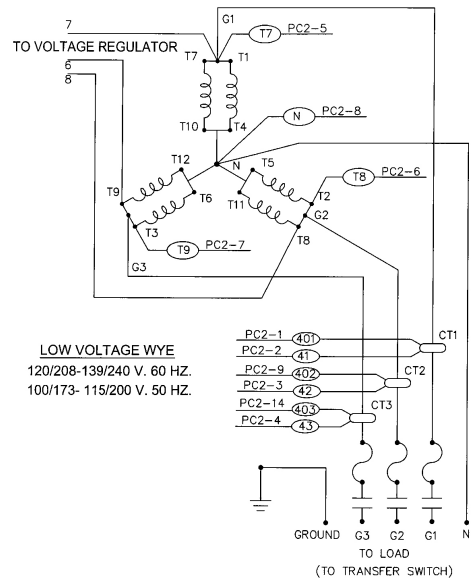
THREE PHASE -DELTA 120/240 VOLTS



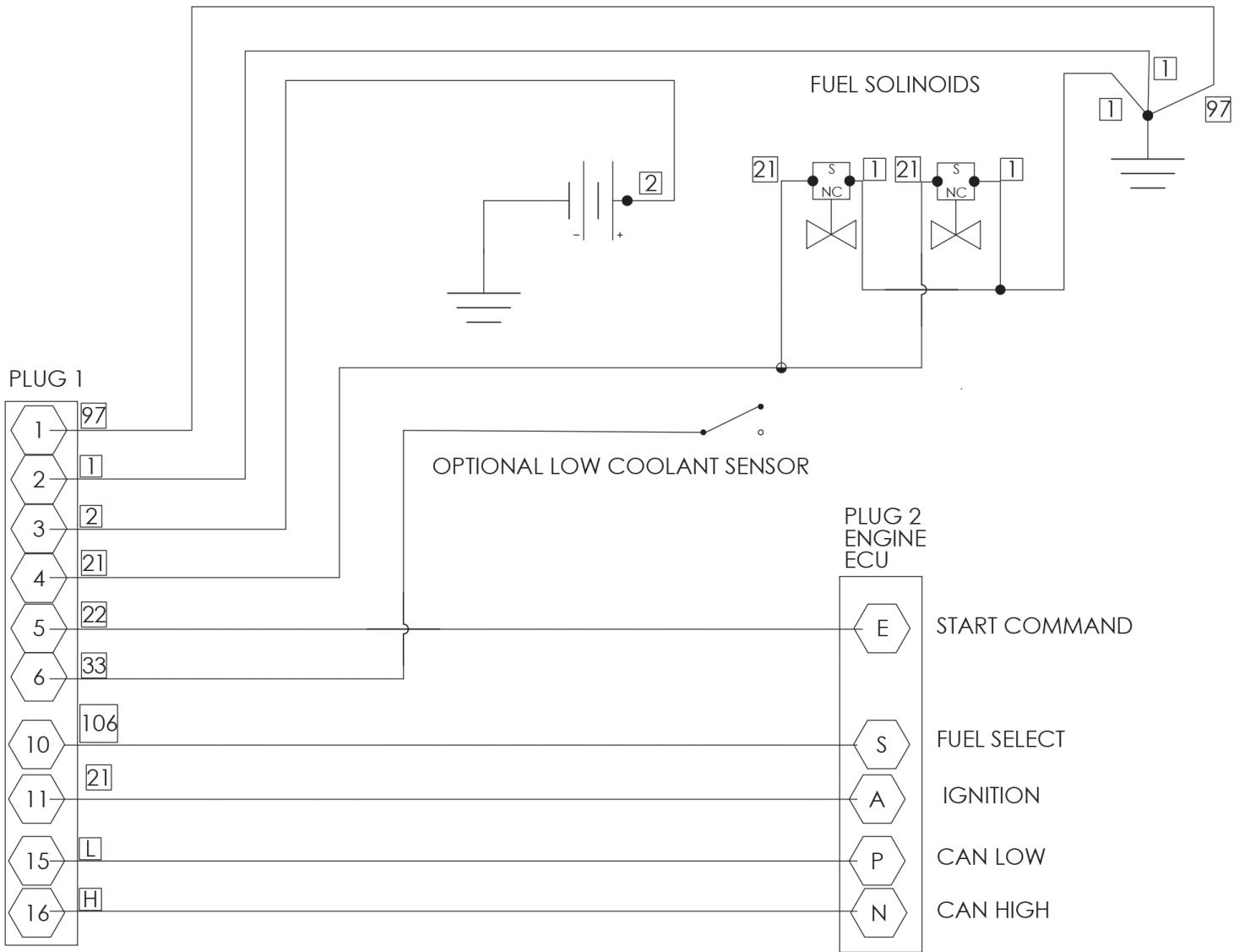
THREE PHASE-HIGH WYE 277/480 VOLTS



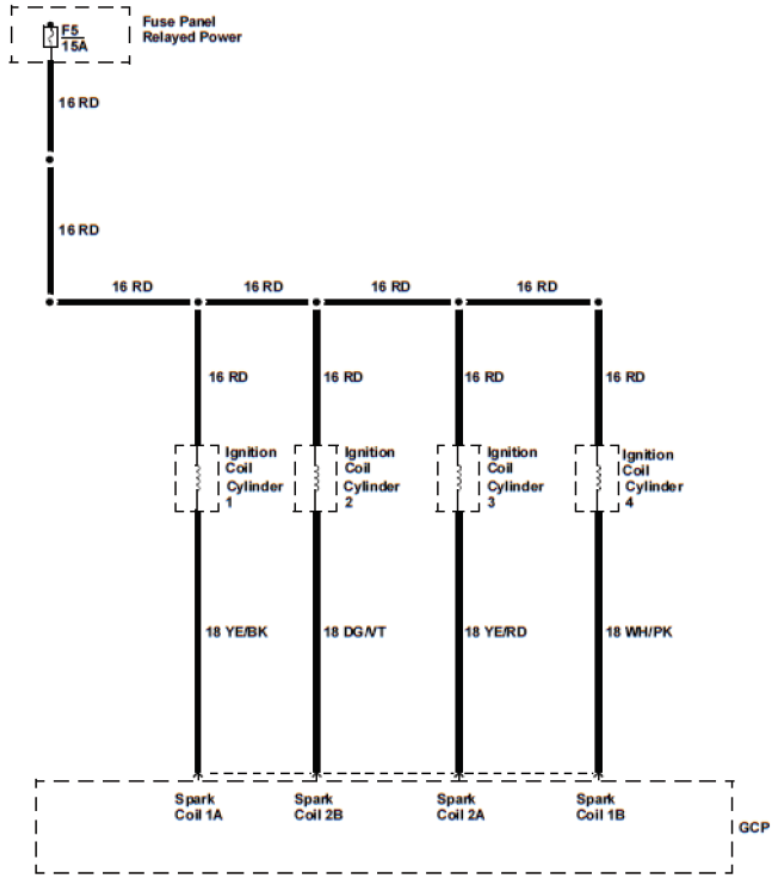
THREE PHASE-LOW WYE 120/208 VOLTS



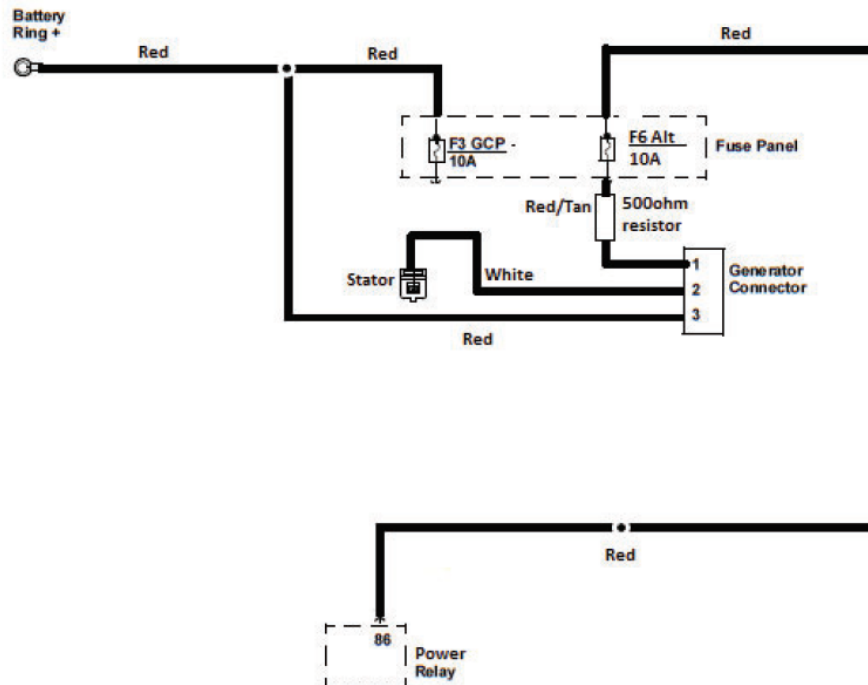
Harness Schematic



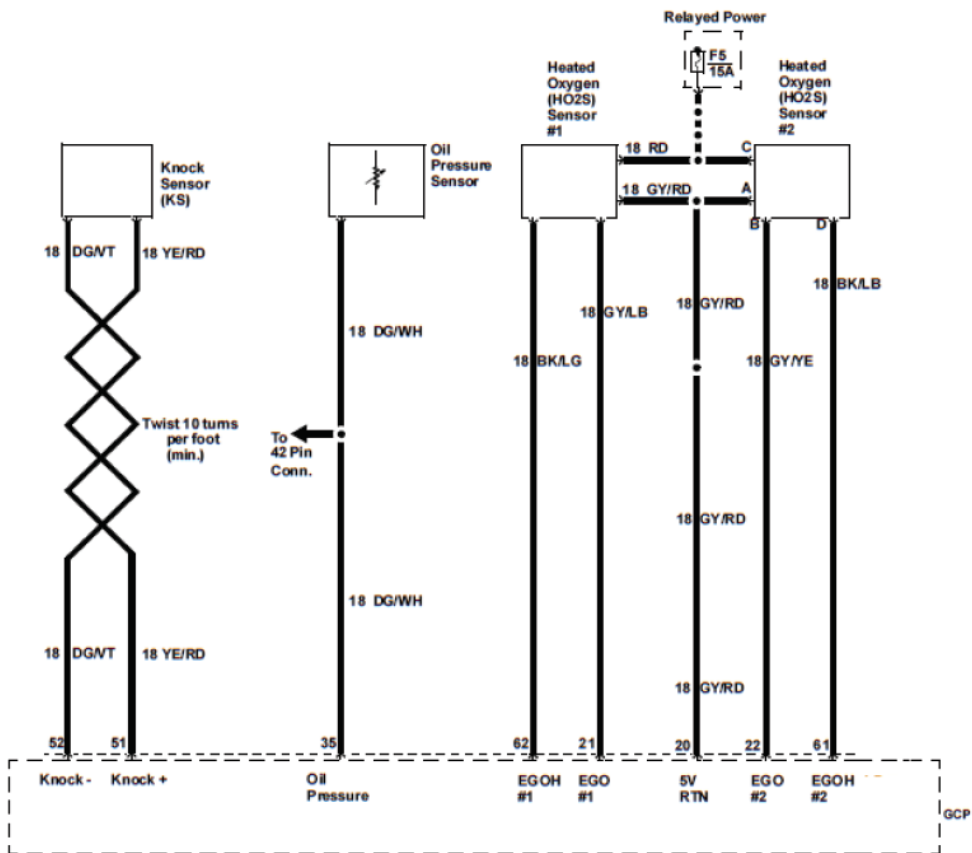
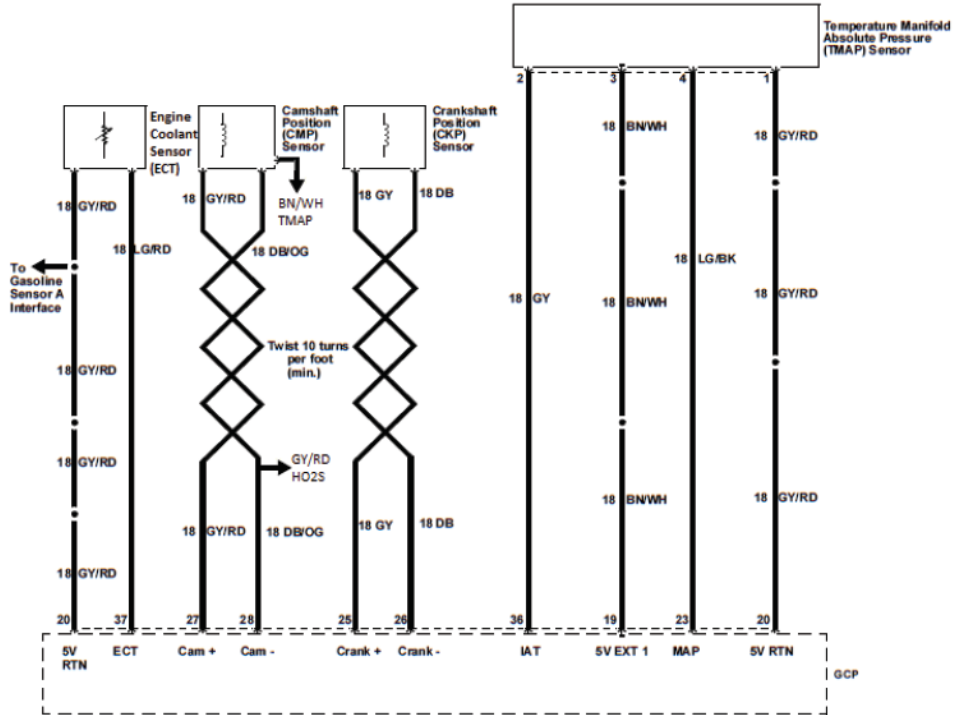
Ignition System



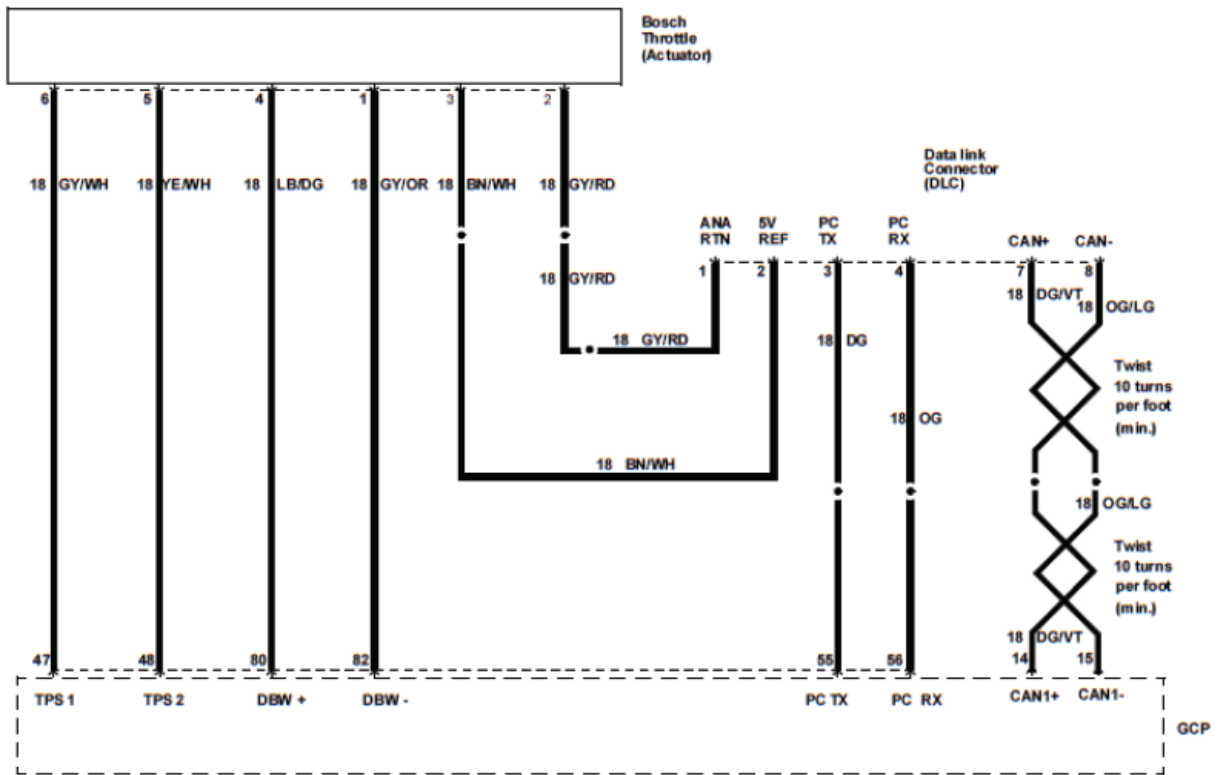
Charging System



Sensors



Actuator/Data Link Connector



Dry Fuel DEPR

