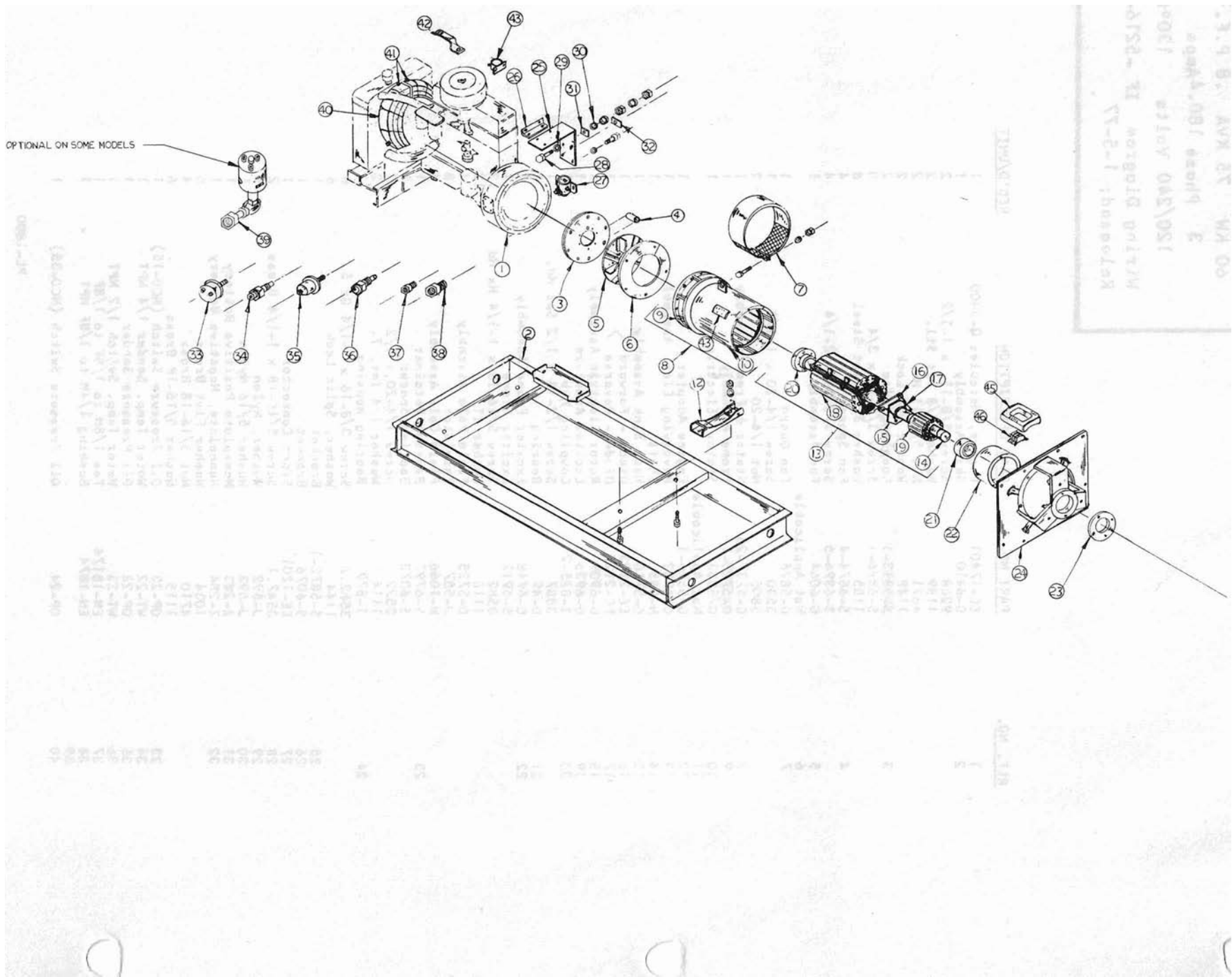




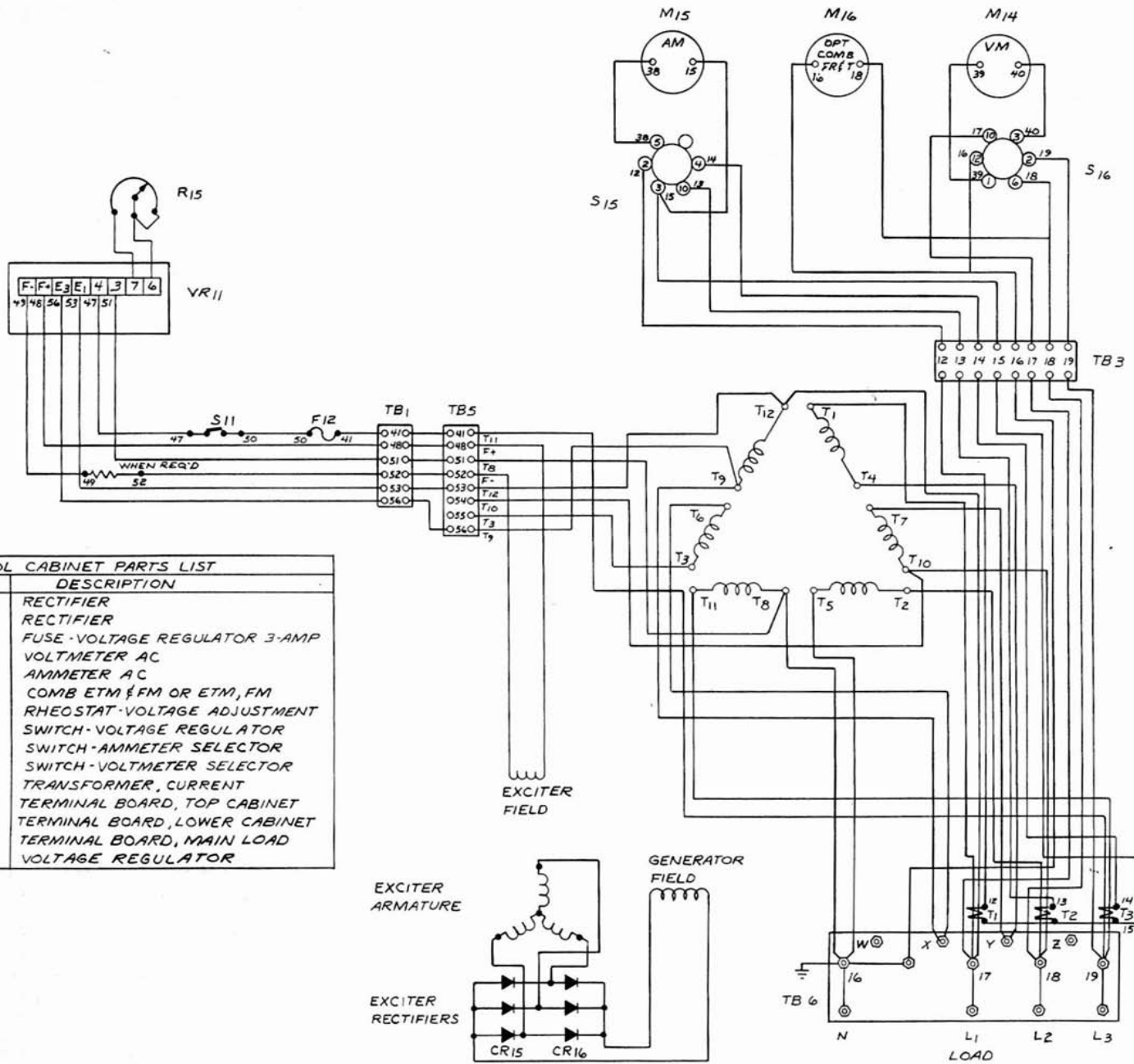
Model DR60H4-J Type II  
60 KW 75 KVA .8 P.F. 60 HZ  
3 Phase 180.4Amps 4 Wire  
120/240 Volts 130°C Rise  
Wiring Diagram IF -5216-5  
Released: 1-5-77

<u>REF. NO.</u>	<u>PART NO.</u>	<u>PART DESCRIPTION</u>	<u>REQ'D/UNIT</u>
1	EC-17401	Engine, Hercules D-3400	1
2	G-6410	Skid Assembly	1
	9268	Screw 5/8-11 x 1-1/2	2
	1189	Washer 5/8 Flat Stl.	2
	4621	Nut 5/8-11 Hx.	2
	1148	Washer 5/8 Lock	2
3	S-5813-1	Coupling Disc	2
	S-6896-1	Screw 3/8-16 x 3/4	8
	1185	Washer 3/8 Flat Steel	8
4	S-6874-4	Fan Spacer	4
	S-6896-5	Screw 3/8-16 x 2-1/4	4
5	G-6064	Fan Assembly	1
6		Not Applicable	
7	G-5826	Fan Guard	1
	3530	Screw 1/4-20 x 1-1/2	1
	5805	Nut 1/4-20	2
8	G-5737-25	Stator & Frame Assembly	1
9	G-5728-1	Frame Assembly	1
10	G-6883	Stator, Electrical	1
11		Not Applicable	
12	G-5506-1	Engine Adapter	1
13	G-6922	Revolving Elec. Assembly	1
14	N-585	Shaft	1
15	G-5710	Heat Sink Assembly	1
16	EE-2123	Diode - Forward	1
17	EE-2122	Diode - Reverse	1
18	G-6909	Rotor Electric Assembly	1
19	G-6935	Exciter Armature	1
20	I-825-2	Coupling Hub	1
	3887	Screw 1/2-13 x 1/2 Soc Hd.	1
21	D-49	Bearing	1
22	G-6948	Exciter Frame Assembly	1
	S-6912	Exciter Frame	1
	3582	Screw 5/16-18 x 1-1/4 Hx Hd	12
	1116	Washer IT	12
	G-5725	Field Pole Assembly	4
	J-587	Insulator	8
	H-1066	Field Coil Assembly	4
23	S-6797	Bearing Retainer	1
	S-6872	Bearing Spacer	1
	3522	Screw 1/4-20 x 1/2	2
	1114	Washer 1/4 Int. T.	2
24	I-879	Bearing Housing	1
	3582.2	Screw 3/8-16 x 1-1/4 Gr 5	6
	1144	Washer, Split Lock	6
25	S-5872-1	Bracket	1
26	S-6076	Bracket	1
27	EE-1201	Start Contactor	1
28	3547.1	Screw 5/16-18 x 1-1/4 Brass	2
29	J-592	Washer, Nylon	1
30	J-593	Washer 5/16 Nylon	1
31	Z-283	Nameplate Positive Battery	1
32	Z-284	Nameplate, Negative Battery	1
	1034	Washer Flat Brass	6
	4710	Nut 5/16-18 Brass	4
	1115	Washer 5/16-18 Brass	6
33	OP-23	Oil Pressure Switch (NCO-15)	1
34	WT-22	Water Temp. Sender 1/4 NPT	1
35	OP-22	Oil Pressure Sender	1
36	WT-23	Water Temp. Switch 1/2 NPT	1
37	EN-18174	Tee 1/8M to 1/8F to 1/8F	1
38	EN-1874	Bushing 1/4M to 1/8F NPT	1
39			
40	OP-24	Oil Pressure Switch (NCO-35)	1

OPTIONAL ON SOME MODELS



Котловод: 1-2-11  
 МЛТЮ0 ДТабзюв ДЛ -2519  
 150/340 А0114 1300  
 3. бляза 160" шюбо  
 60 МА. 12 МАВ 12 В. 6. 1.



CONTROL CABINET PARTS LIST		
REF	PART NO	DESCRIPTION
CR15	EE-2122	RECTIFIER
CR16	EE-2123	RECTIFIER
F12	EE-445-2	FUSE-VOLTAGE REGULATOR 3-AMP
M14	VM-35	VOLTMETER AC
M15	—	AMMETER AC
M16	—	COMB ETM & FM OR ETM, FM
R15	R-91	RHEOSTAT-VOLTAGE ADJUSTMENT
S11	EE-151	SWITCH-VOLTAGE REGULATOR
S15	EE-276-1	SWITCH-AMMETER SELECTOR
S16	EE-275-1	SWITCH-VOLTMETER SELECTOR
T1,2,3	—	TRANSFORMER, CURRENT
TB1,3	—	TERMINAL BOARD, TOP CABINET
TB5	—	TERMINAL BOARD, LOWER CABINET
TB6	—	TERMINAL BOARD, MAIN LOAD
VR11	EE-175C	VOLTAGE REGULATOR

IF 5216-5

SCHEMATIC DIAGRAM  
GENERATOR REGULATOR  
INSTRUMENTATION

SCALE: 2-4-77  
DATE: 2-4-77  
DWN: KH  
MODEL NO.:  
PART NO: IF-5216-5  
CHR: 0

WINPOWER CORPORATION  
NEWTON, IOWA 50208

120/240 TO 133/277 VOLTS, 60 HZ  
115/230 TO 133/266 VOLTS, 50 HZ

CHANGE	WHY ORIGINALLY	DATE	CHK'D	ENL. NUMBER	NO. REQ'D.	MICROFILM DATA

TOLERANCE ON DIMENSIONS NOT OTHERWISE SPECIFIED

DECIMAL 2  
FRACTIONAL 2  
ANGULAR 2

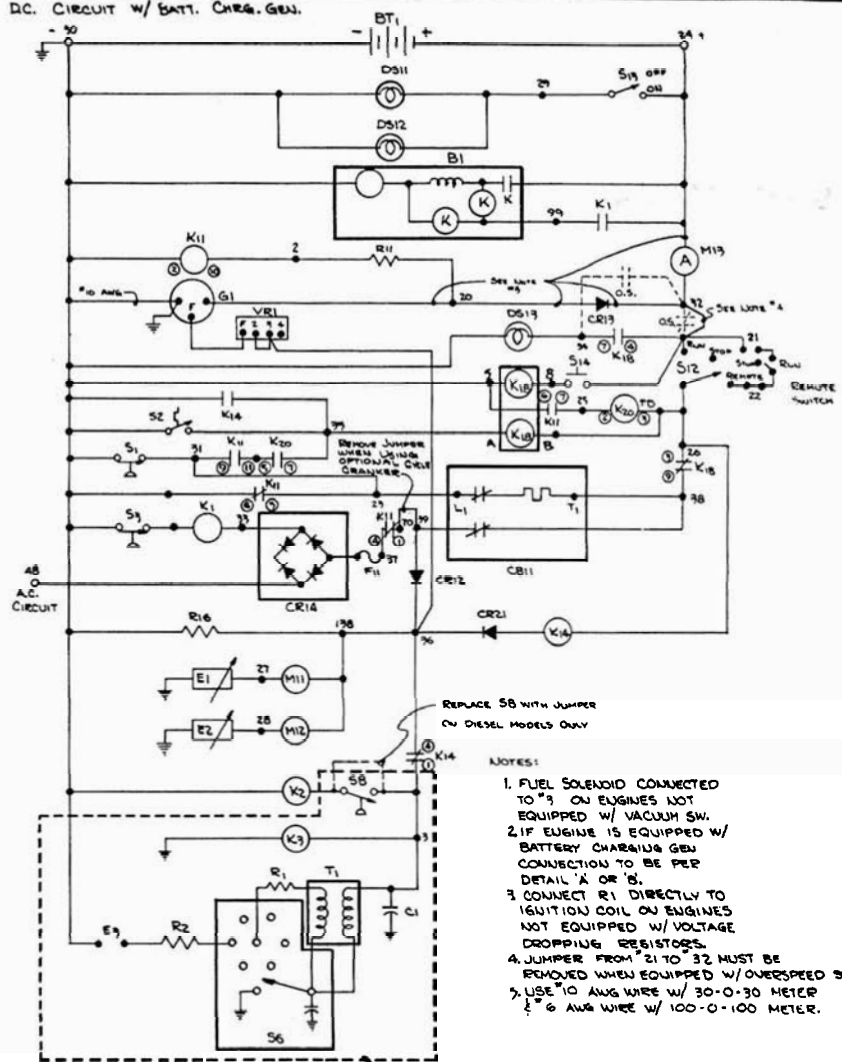
REMOVE ALL BURRS  
BREAK ALL SHARP  
MACHINED EDGES

MATERIAL

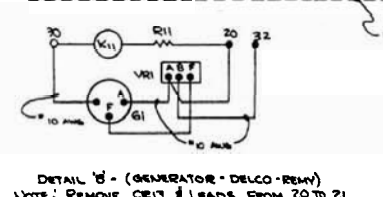
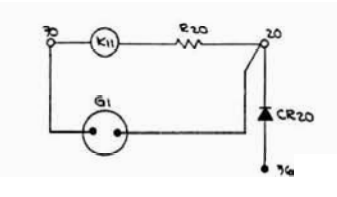
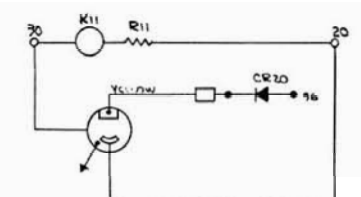
ENGINE PARTS LIST		
REF.	PART NO.	DESCRIPTION
B1	SEE ENG. MAN.	START MOTOR W/ SOLENOID SWITCH
BT1	VARIOUS	BATTERY
C1	SEE ENG. MAN.	CAPACITOR (SPARK IGNITED ENGINES ONLY)
E1	OP-22	SENDER - OIL PRESSURE
E2	WT-22	SENDER - WATER TEMP.
E3	SEE ENG. MAN.	SPARK PLUG - (SPARK IGNITED ENGINES)
G1	SEE NOTE #2	ALTERNATOR OR GENERATOR (BATT. CHARGE)
K1	EE-1201	RELAY, STARTER MOTOR
K2	SEE ENG. MAN.	SOLENOID - FUEL
K9	SEE ENG. MAN.	CHOKE (GASOLINE ONLY)
R1	SEE ENG. MAN.	RESISTOR COIL (OPTIONAL - SPARK IGNITED ENG. ONLY)
R2	SEE ENG. MAN.	RESISTORS - SPARK PLUGS
S1	OP-23	SWITCH - LOW OIL PRESSURE (CLOSED 0-15 PSI)
S2	WT-23	SWITCH - HIGH WATER TEMPERATURE
S3	OP-24	SWITCH - STARTER MOTOR SAFETY (CLOSED 0-35 PSI)
S4	VARIOUS	SWITCH - OVERSPEED (OPTIONAL)
S6	SEE ENG. MAN.	DISTRIBUTOR ASSY. (SPARK IGNITED ENG. ONLY)
S8	SEE ENG. MAN.	SWITCH - VACUUM (GASEOUS FUELS ONLY)
T1	SEE ENG. MAN.	COIL IGNITION (SPARK IGNITED ENG. ONLY)
VR1	SEE ENG. MAN.	VOLTAGE REGULATOR - BATTERY CHARGING

CONTROL CABINET PARTS LIST		
REF.	PART NO.	DESCRIPTION
CB11	EE-1011	CIRCUIT BREAKER - SAFETY SHUTDOWN
CR12	G-5183-7	RECTIFIER - BLOCKING
CR13	G-5819	RECTIFIER - BLOCKING
CR14	EE-2111-4 or EE-2189	RECTIFIER - FIELD FLASHER
CR20	G-5819	RECTIFIER - BLOCKING
CR21	EE-2167	RECTIFIER - BLOCKING
DS11,12	EE-940	LAMP - PANEL
DS13	EE-940	LAMP - FAILURE
F11	EE-445-2	FUSE - FIELD FLASHER
K11	EE-1220	RELAY - CRANKING CONTROL
K18	EE-1233	LATCHING RELAY
K14	EE-1203	RELAY
K20	EE-1054	TIME DELAY RELAY
M11	OP-21	GAUGE - OIL PRESSURE
M12	WT-21	GAUGE - WATER TEMPERATURE
M19	AM-12	GAUGE - AMMETER - CHARGE 70-0-30 or 100-0-100
R11	R-171	RESISTOR - 33 OHM, 10 WATT
R16	R-157	RESISTOR - 100 OHM, 10 WATT
R20	R-125	RESISTOR - 125 OHM, 10 WATT
S12	EE-101	SWITCH - ENGINE - RUN, STOP, REMOTE
S13	EE-151	SWITCH - PANEL LAMP
S14	EE-233	DE-ENERGIZATION SWITCH - SAFETY SHUTDOWN

DC. CIRCUIT W/ BATT. CHRG. GEN.



- REPLACE S8 WITH JUMPER ON DIESEL MODELS ONLY
- NOTES:
1. FUEL SOLENOID CONNECTED TO #3 ON ENGINES NOT EQUIPPED W/ VACUUM SW.
  2. IF ENGINE IS EQUIPPED W/ BATTERY CHARGING GEN CONNECTION TO BE PER DETAIL 'A' OR 'B'.
  3. CONNECT R1 DIRECTLY TO IGNITION COIL ON ENGINES NOT EQUIPPED W/ VOLTAGE DROPPING RESISTORS.
  4. JUMPER FROM #21 TO #32 MUST BE REMOVED WHEN EQUIPPED W/ OVERSPEED SW.
  5. USE #10 AWG WIRE W/ 30-0-30 METER & #6 AWG WIRE W/ 100-0-100 METER.



ENGINE	WHO ORIGINALLY	DATE	CRE'D	ENL. NUMBER	NO. REV'D	MICROFILM DATA

TOLERANCE ON DIMENSIONS NOT OTHERWISE SPECIFIED: DECIMAL ± FRACTIONAL ±

REMOVE ALL DIMS BREAK ALL SHARP ROUNDED EDGES

MATERIAL

12 VOLT ENGINE ELEC. CIRCUIT	
SCHEMATIC DIAGRAM	
SCALE: NONE	MODEL NO.
DATE: 10/5/76	PART NO.
DRW: SWP	CHKD: Reddy
WINPOWER CORPORATION	
NEW WA 80808	