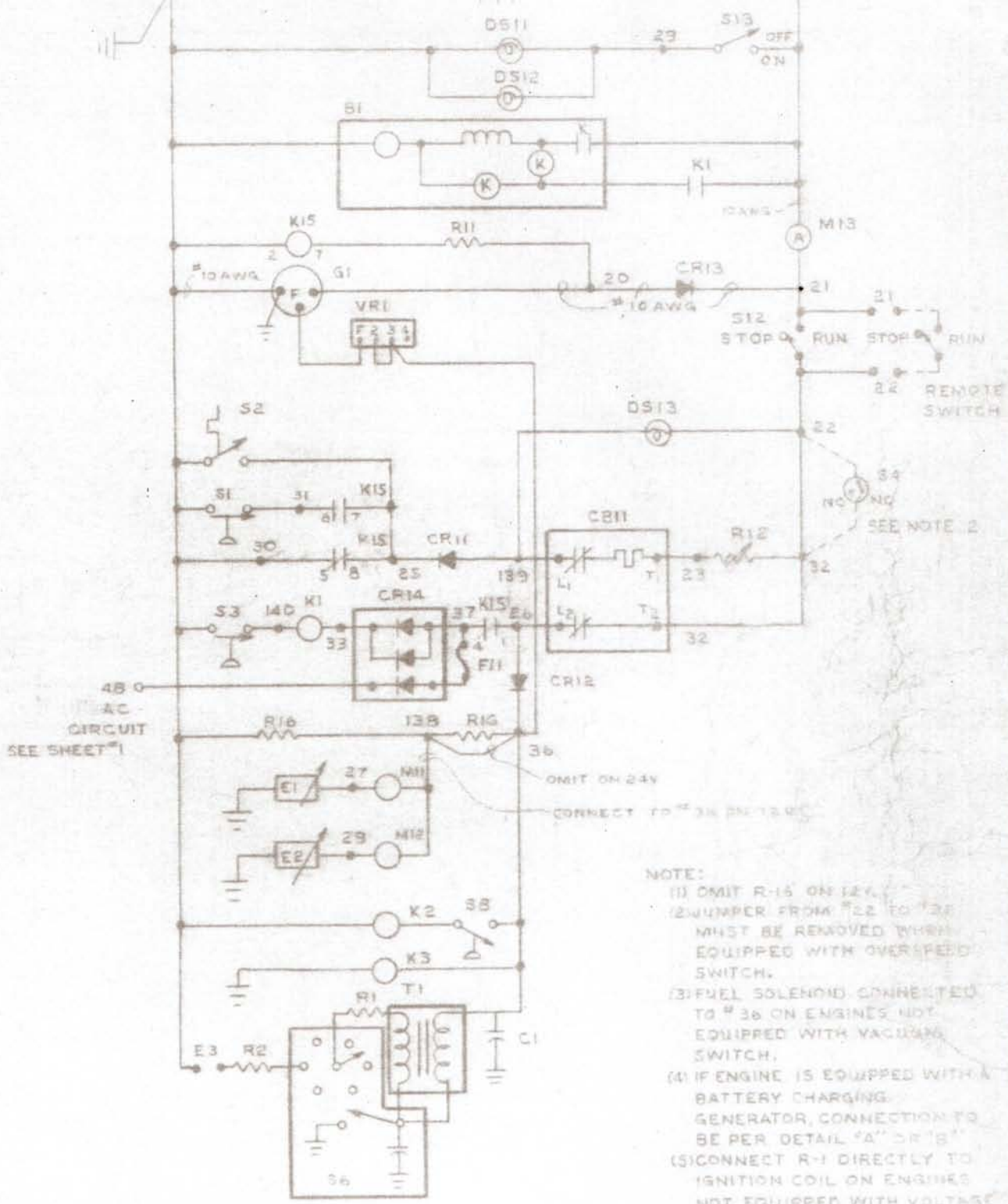


PARTS LIST
DR40H4-D

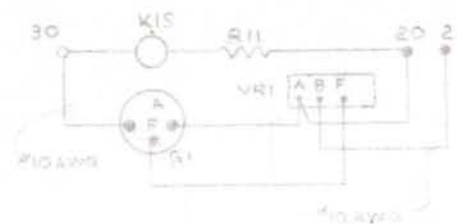
<u>PART NO.</u>	<u>DESCRIPTION</u>	<u>QUANTITY</u>
EE-1201	Start Contactor	1
OP-22	Oil Pressure Sender	1
OP-23	Oil Pressure Safety Switch	1
WT-22	Water Temperature Sender	1
WT-23	Water Temperature Safety Switch	1
G-5390-1	Engine Adapter	1
G-3827-4	Fan Assembly	1
I-825-2	Coupling Hub	1
S-6878	Fan Spacer	4
S-5813-1	Coup Disc	2
G-5737-2	Stator and Frame Assy.	1
I-879	Bearing Housigg	1
G-5749	Exciter Field Frame Assembly	1
G-5825	Panel Assembly	1
G-5826	Fan Guard	1
G-5740-3	Cabinet Assembly	1
G-5741-2	Engine & Generator Panel Sub Assembly	1
G-5755	Volt Panel Assembly	1
WIRING DIAGRAM	F-4628-2	



480 AC
CIRCUIT
SEE SHEET "1"

OMIT ON 24V
CONNECT TO "36" ON 12V

- NOTE:
- (1) OMIT R-16 ON 12V.
 - (2) JUMPER FROM "22" TO "36" MUST BE REMOVED WHEN EQUIPPED WITH OVERSPEED SWITCH.
 - (3) FUEL SOLENOID CONNECTED TO # 36 ON ENGINES NOT EQUIPPED WITH VACUUM SWITCH.
 - (4) IF ENGINE IS EQUIPPED WITH A BATTERY CHARGING GENERATOR, CONNECTION TO BE PER DETAIL "A" OR "B".
 - (5) CONNECT R-1 DIRECTLY TO IGNITION COIL ON ENGINES NOT EQUIPPED WITH VOLTAGE DROPPING RESISTORS.



FILE COPY
USED ON GEN. BEFORE
3-31-76 Z-20952

SCHEMATIC DIAGRAM	
ENGINE ELECTRICAL CIRCUIT	
SCALE: 1/8"	REVISED BY:
DATE: 2-27-72	FIG. NO. 1F-46282
PREP. F.S.C.	DATE:

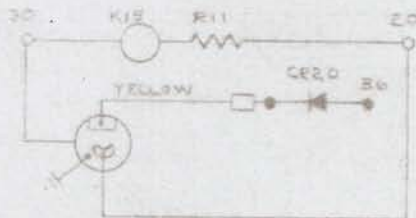
3625 12 464
 R 20

ENGINE PARTS LIST

REF	PART NO.	DESCRIPTION
B1	SEE ENG MAN	START MOTOR W/SOLENOID SWITCH
B1	VARIOUS	BATTERY
C1	SEE ENG MAN	CAPACITOR (SPARK IGNITED ENGINES ONLY)
E1	OP-22	SENDER - OIL PRESSURE
E2	WT-22	SENDER - WATER TEMPERATURE
E3	SEE ENG MAN	SPARK PLUG (SPARK IGNITED ENGINES ONLY)
G1	SEE NOTE #4	ALTERNATOR OR GENERATOR (BATT CHARGE)
K1	EE-120N(2V)	RELAY STARTER MOTOR (EE-124) 24V
K2	SEE GEN MAN	SOLENOID - FUEL
K3	SEE ENG MAN	CHOKE (GASOLINE ONLY)
R1	SEE ENG MAN	RESISTOR COIL (OPTIONAL- SPARK IGNITED ENG. ONLY)
R2	SEE ENG MAN	RESISTORS - SPARK PLUG
S1	OP-23	SWITCH-LOW OIL PRESSURE (CLOSED 0-15 PSI)
S2	WT-23	SWITCH-HIGH WATER TEMPERATURE
S3	OP-24	SWITCH-STARTER MOTOR SAFETY (CLOSED 0-35 PSI)
S4	SEE GEN MAN	SWITCH-OVERSPEED (OPTIONAL)
S5	SEE GEN MAN	SWITCH-VACUUM (GASEOUS FUELS ONLY)
T1	SEE ENG MAN	COIL IGNITION (SPARK IGNITED ENGINES ONLY)
VRI	SEE ENG MAN	VOLTAGE REGULATOR - BATTERY CHARGING
AS	SEE ENG MAN	DISTRIBUTOR ASSEMBLY (SPARK IGNITED ENGINE ONLY)

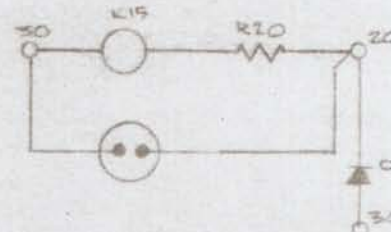
CONTROL CABINET PARTS LIST

REF	PART NO.	DESCRIPTION
CB11	EE-1811	CIRCUIT BREAKER-SAFETY SHUTDOWN
CR12	G-5183-3	RECTIFIERS - BLOCKING
CR13	G-5819	RECTIFIER-BLOCKING
CR14	G-5847	RECTIFIER-FIELD FLASHER
DS11,12	EE-940-1	LAMP-PANEL (12V)
DS13	EE-938-1	LAMP-FAILURE (12V)
F11	EE-945-2	FUSE-FIELD FLASHER
K15	EE-1207-3	RELAY-CRANKING CONTROL (12V)
M11	OP-21	GAUGE-OIL PRESSURE
M12	WT-21	GAUGE-WATER TEMPERATURE
M13	AM-12	GAUGE-AMMETER-CHARGE 30-0-30
R11	R-171	RESISTOR - 33 OHM, 10 WATT
R12	R-107	RESISTOR - 10 OHM, 25 WATT
R16	R-157	RESISTOR - 100 OHM, 10 WATT
S12	EE-151	SWITCH-ENGINE START-RUN
S13	EE-151	SWITCH-PANEL LAMP
CR20	G-5819	RECTIFIER-BLOCKING - OPT.
R220		RESISTOR - 25 OHM, 10 WATT



DETAIL A ALTERNATOR MOTOROLA NO. FA12N-4510 W/REGULATOR NO. R3-1

NOTE
1. ADD CR20 RECTIFIER.



DETAIL "C" ALTA
DELCO REMY #11

NOTE
1. ADD RECTIFIER
2. REMOVE R11

D	WAS 2/21/73	2-21-73	DR				
E	ADD DETAIL	1/24/73	F.C.	E	ADD	10-8-73	M.E.
A	STDBY	6/27/70	F.S.C.	C	ALL TO	5-15-73	F.C.
CRASH	WAS ORIGINALLY	DATE	CHG	CHG	REQ		
TOLERANCE ON	DECIMAL				NO		
					REQD		
						MICROFILM DATA	JUL 25 1977