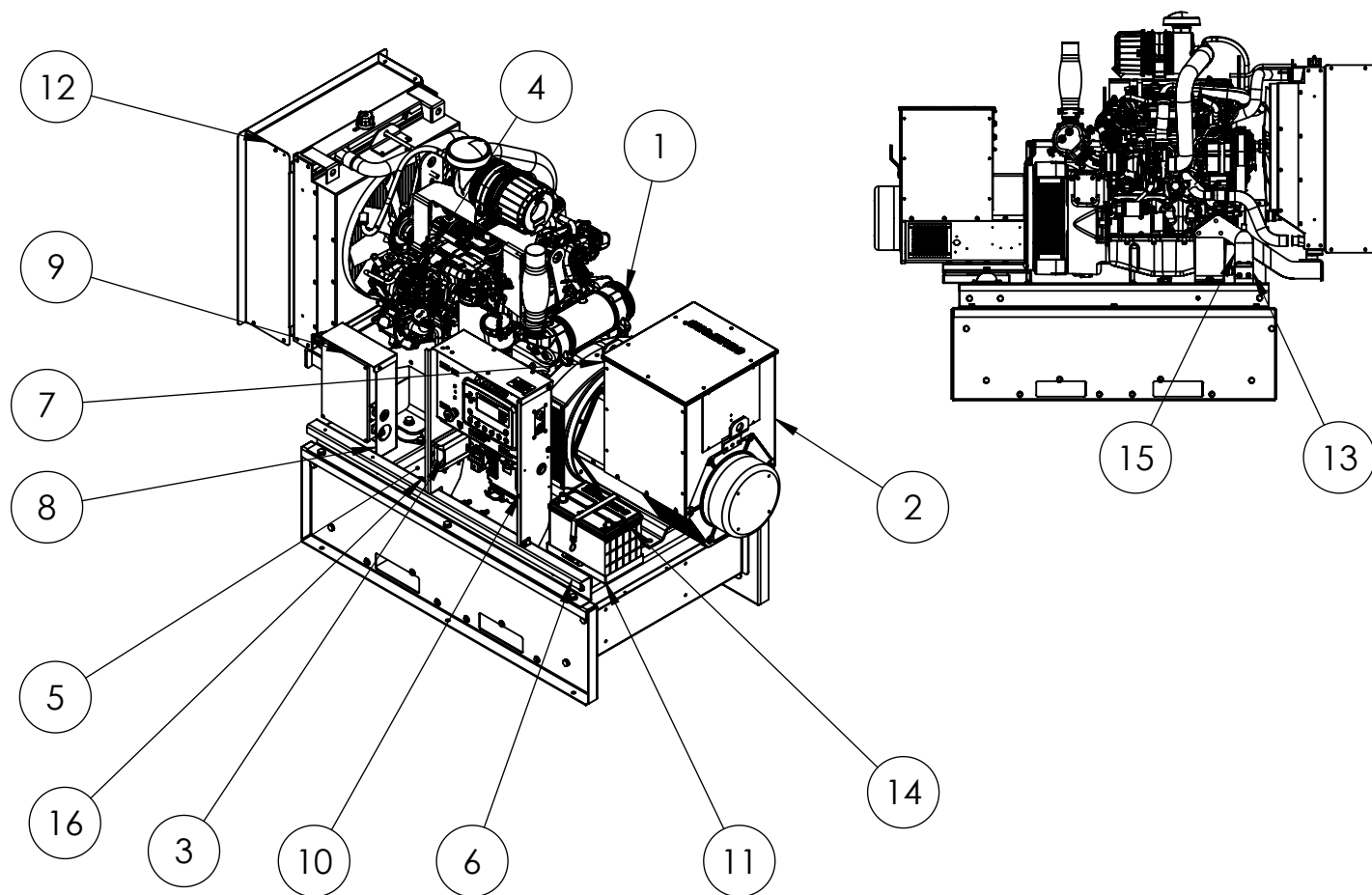


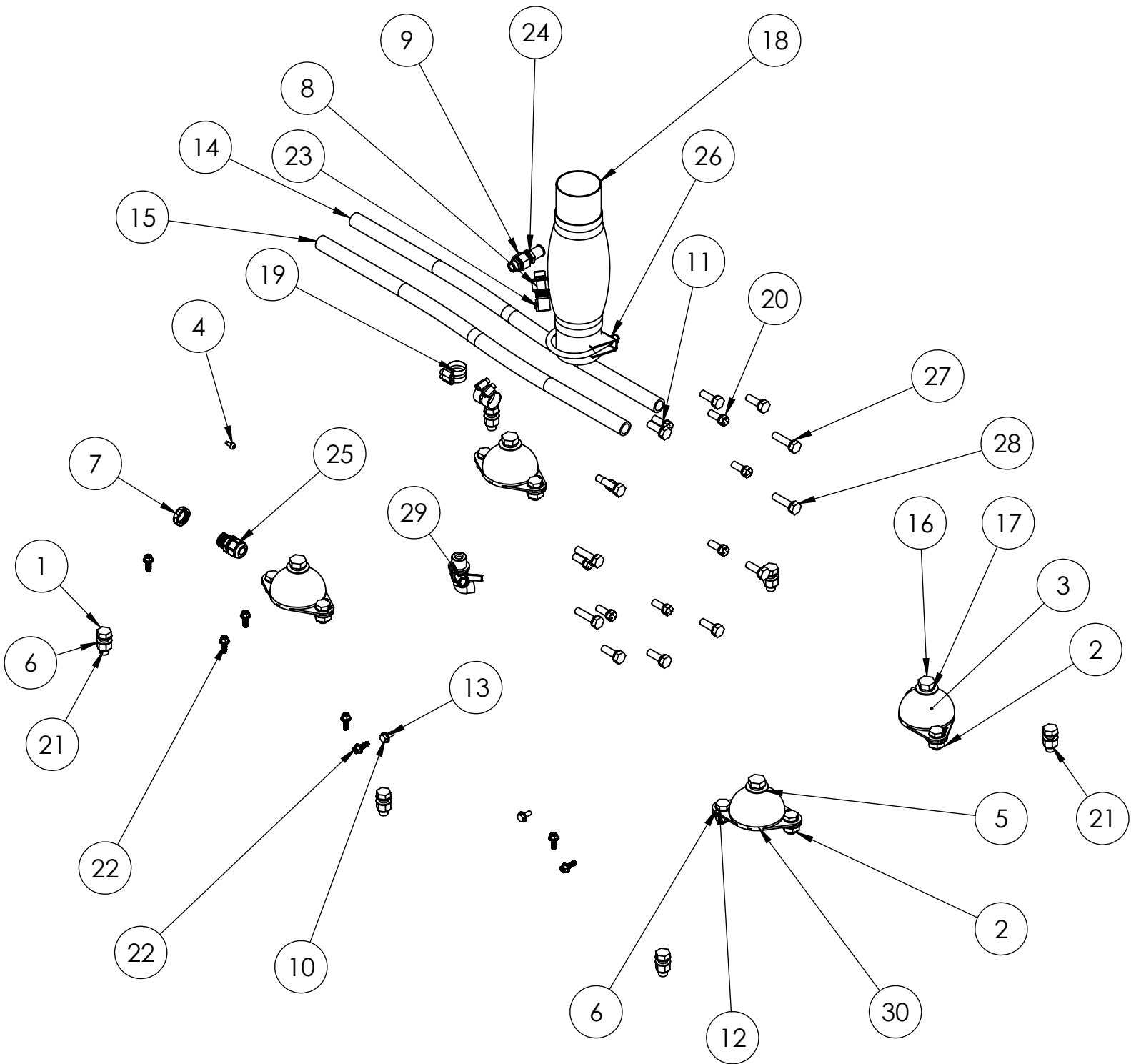
**WINCO Service**  
Phone: 507-357-6831  
Email: [service@wincogen.com](mailto:service@wincogen.com)  
[www.wincogen.com](http://www.wincogen.com)

# GENERAL ASSEMBLY



ITEM NO.	PART NUMBER	DESCRIPTION	QTY.
1	350001-92	ENGINE FPT F5C F34	1
2	351930-3	UCI224E, SAE#3/11.5, WDG#311, 12-LEAD	1
3	352020-26	BATTERY CHARGER KIT, 12V, 1.5 AMP	1
4	411050-001	ENGINE ECU HARNESS FPT F5C	1
5	815001-000	TANK ASSEMBLY, 54 GAL	1
6	801050-000	BASE ASSY.	1
7	802050-001	GENERATOR FRONT PANEL ASSY	1
8	803050-004	BLACK BOX MOUNT	1
9	803050-005	BLACK BOX COVER	1
10	803050-000	CONTROL TOWER ASSY	1
11	805050-000	BATTERY TRAY KIT	1
12	806050-001	RAD DUCTING	1
13	806050-003	BLOCK HEATER BRACKET	1
14	80765-010	BATTERY 12V 650CCA GROUP 24	1
15	80781-009	PRE HEATER 1800W/120V TANK HEATER	1
16	98433-002	FUEL LEVEL SENDING UNIT KIT 9.5" 240-33 OHM	1

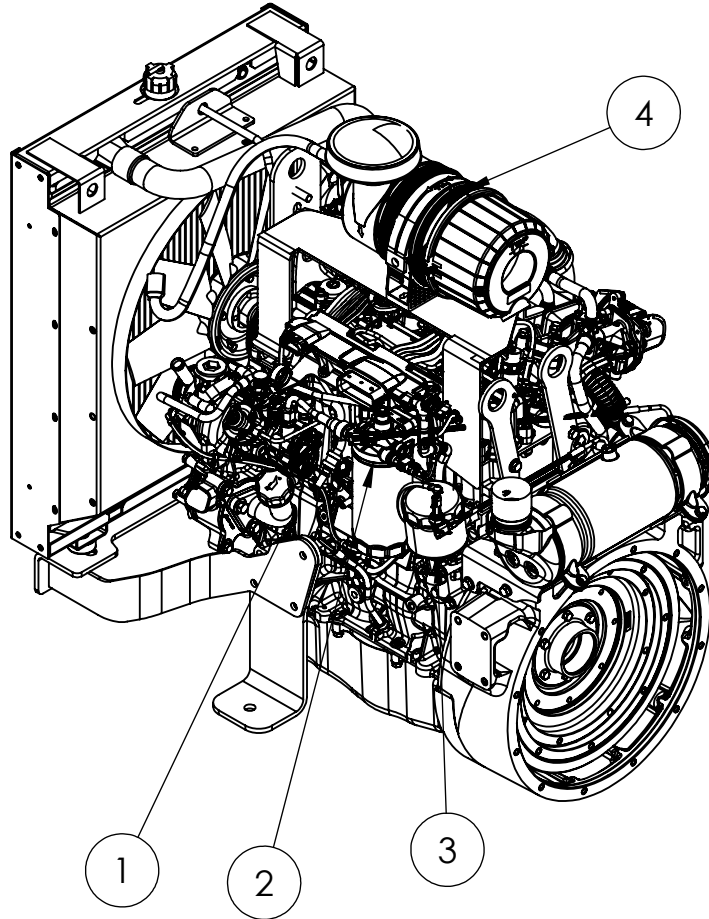
# HARDWARE



# HARDWARE BOM

ITEM NO.	PART NUMBER	DESCRIPTION	QTY.
1	1516-000	.5-13X1.25 HHB	6
2	16248-001	.5-13 FLANGE NUT	8
3	1744-000	NUT HEX 1/2-13	4
4	21698-001	TORX PAN HEAD SCREW #10	1
5	21867-000	FLAT WASHER	4
6	21867-000	FLAT WASHER .51 X .88 X .05	20
7	22627-001	LOCKNUT 1/2 NPT	1
8	300349-6	ADAPTER M16X1.5(M) X 3/8-18NPT (F)	1
9	300349-9	ADAPTER M18X1.5(M) X 3/8-18NPT (F)	1
10	476-000	.25-20X.625 HHB	2
11	481-001	LOCKWASHER 3/8 SPLIT BLACK	8
12	48178-000	HHCS 1/2-13 X 1	8
13	512-000	.25 WASHER	2
14	56107-003	HOSE 24" LONG	1
15	56107-014	HOSE 15" LONG	1
16	57580-000	HHCS 1/2-13 X 1.5 GR5	4
17	636-000	LOCKWASHER 1/2 SPLIT	4
18	64743-002	2.5" X 8 FLEX	1
19	81018-005	HOSE CLAMP 1.0625-.500	4
20	91658-001	.375-24X1 HHB BLACK	8
21	92242-000	NUT HEX .500-13 NYLOCK	6
22	352120-2	1/4-20 X .75 FHCS	7
23	92382-000	HOSE FIT.ELBOW .375NPT X .625 HOSE	1
24	92388-000	HOSE FIT .375NPT X .625 HOSE	1
25	93073-030	CORD GRIP .5NPT	1
26	93489-002	MUFFLER CLAMP 2.5"	1
27	96003-040	HHCS M10-1.5X 40MM BLACK	4
28	97436-010	M10 LOCKWASHER	12
29	98906-018	OIL DRAIN VALVE M22 X 5/8 90HB	1
30	98956-001	SHOCKMOUNT 40 DURO (GREEN DOT)	4

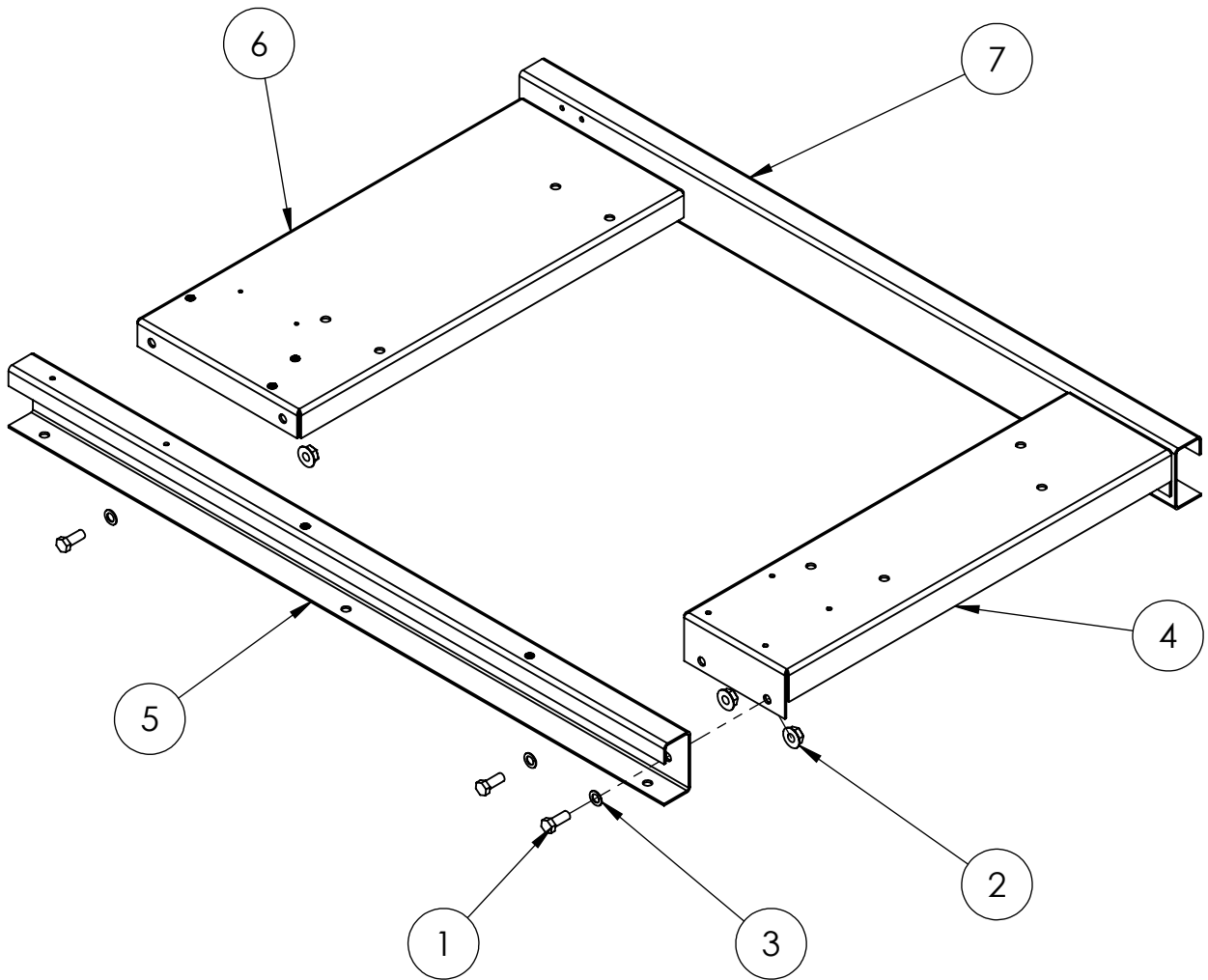
# ENGINE PACKAGE



ITEM NO.	PART NUMBER	DESCRIPTION	QTY.
1	6-117	LOW COOLANT LEVEL SENSOR	1
2	6-134	FUEL FILTER	1
3	6-135	OIL FILTER	1
4	6-136	AIR FILTER	1

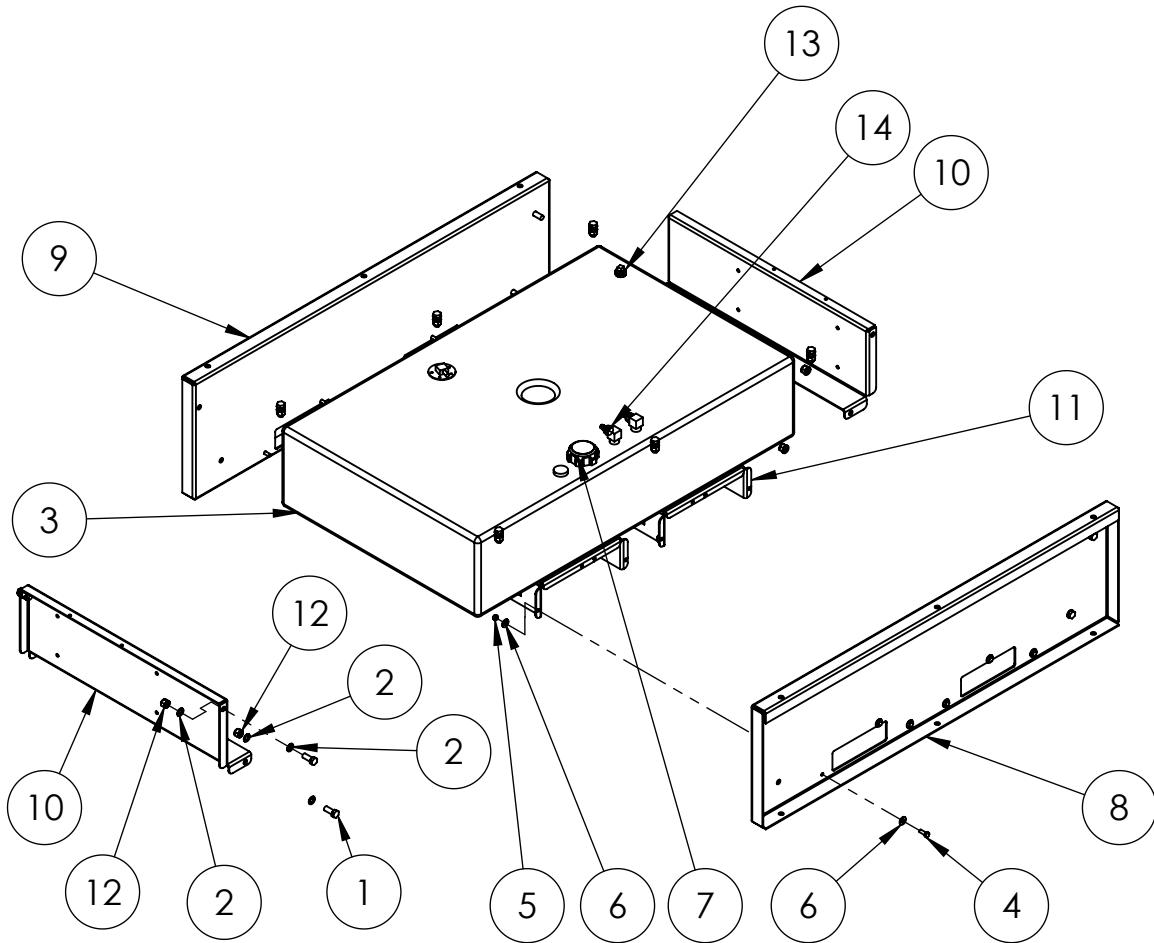
\*350001-92 - FPT F5C 3.4L I4 ENGINE PACKAGE\*

# BASE ASSEMBLY



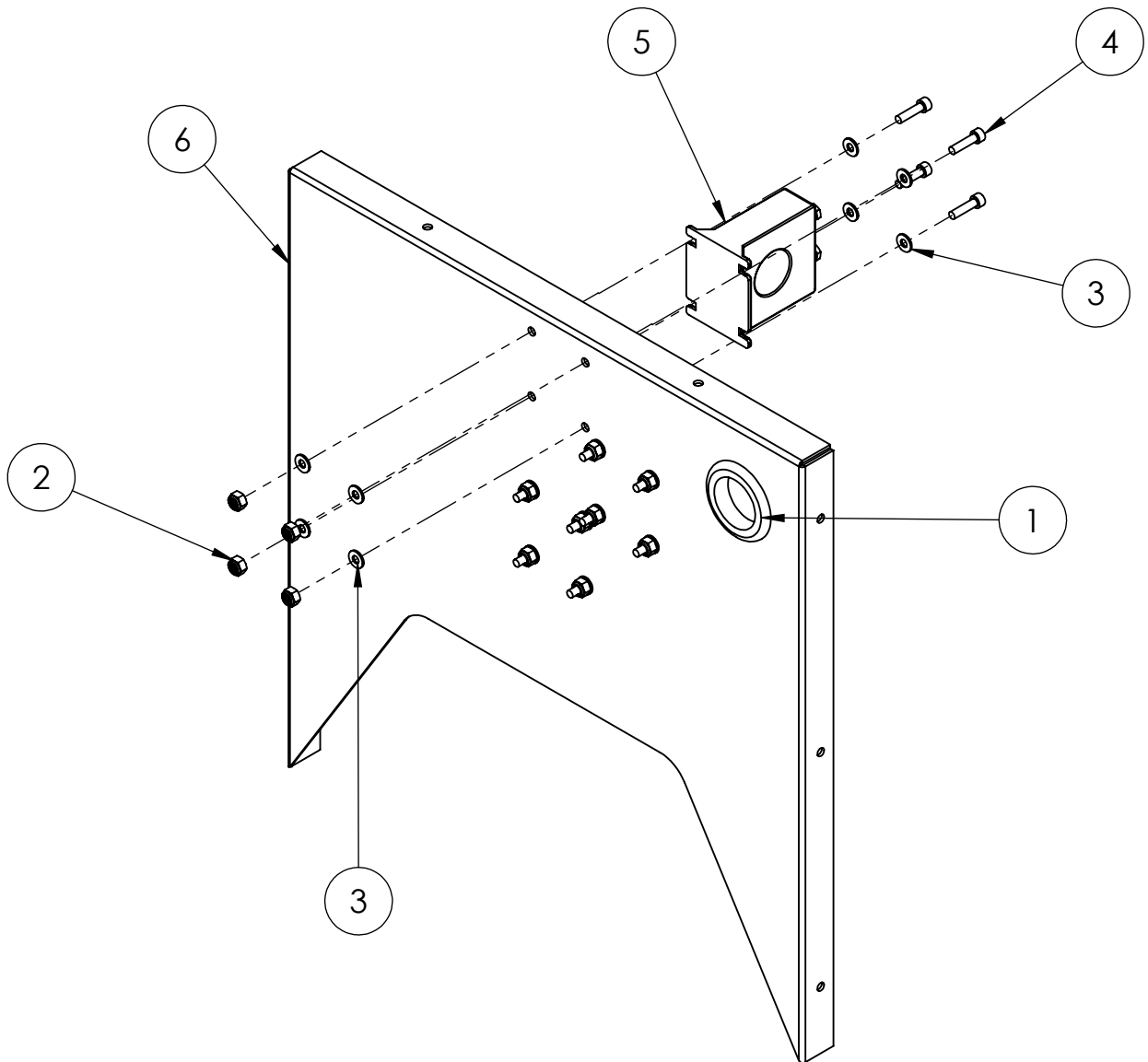
ITEM NO.	PART NUMBER	DESCRIPTION	QTY.
1	1516-000	.5-13X1.25 HHB	6
2	16248-001	.5-13 FLANGE NUT	6
3	21867-000	FLAT WASHER .51 X .88 X .05	6
4	801044-004	GENERATOR CROSSMEMBER	1
5	801050-001	LEFT SIDE RAIL, BOTTOM FORK	1
6	801050-002	ENGINE CROSSMEMBER	1
7	801050-000	RIGHT SIDE RAIL, BOTTOM FORK	1

# BASE AND FUEL TANK ASSEMBLY



ITEM NO.	PART NUMBER	DESCRIPTION	QTY.
1	1516-000	.5-13X1.25 HHB	8
2	21867-001	FLAT WASHER .51 X .88 X .05	28
3	350041-118	FUEL TANK	1
4	465-000	.3125-18X.875 HHB	12
5	47136-000	HEX NUT .3125-18 NYLOK	12
6	526-000	5/16 FLAT WASHER	24
7	62398-000	FUEL CAP AND GAUGE, TWO WAY VENT, 10IN, DIESEL	1
8	815001-002	LEFT SIDE RAIL, BOTTOM FORK	1
9	815001-001	RIGHT SIDE RAIL, BOTTOM FORK	1
10	801044-016	BASE FRAME END CAP, BOTTOM FORK	2
11	801044-015	FUEL TANK SUPPORT	2
12	92242-000	NUT HEX .500-13 NYLOCK	14
13	93564-000	PIPE PLUG 3/4 SQUARE HEAD	1
14	94319-008	HOSE FIT. .500-14NPT X .375 HOSE BARB	2

# GEN. FRONT PANEL ASSY.

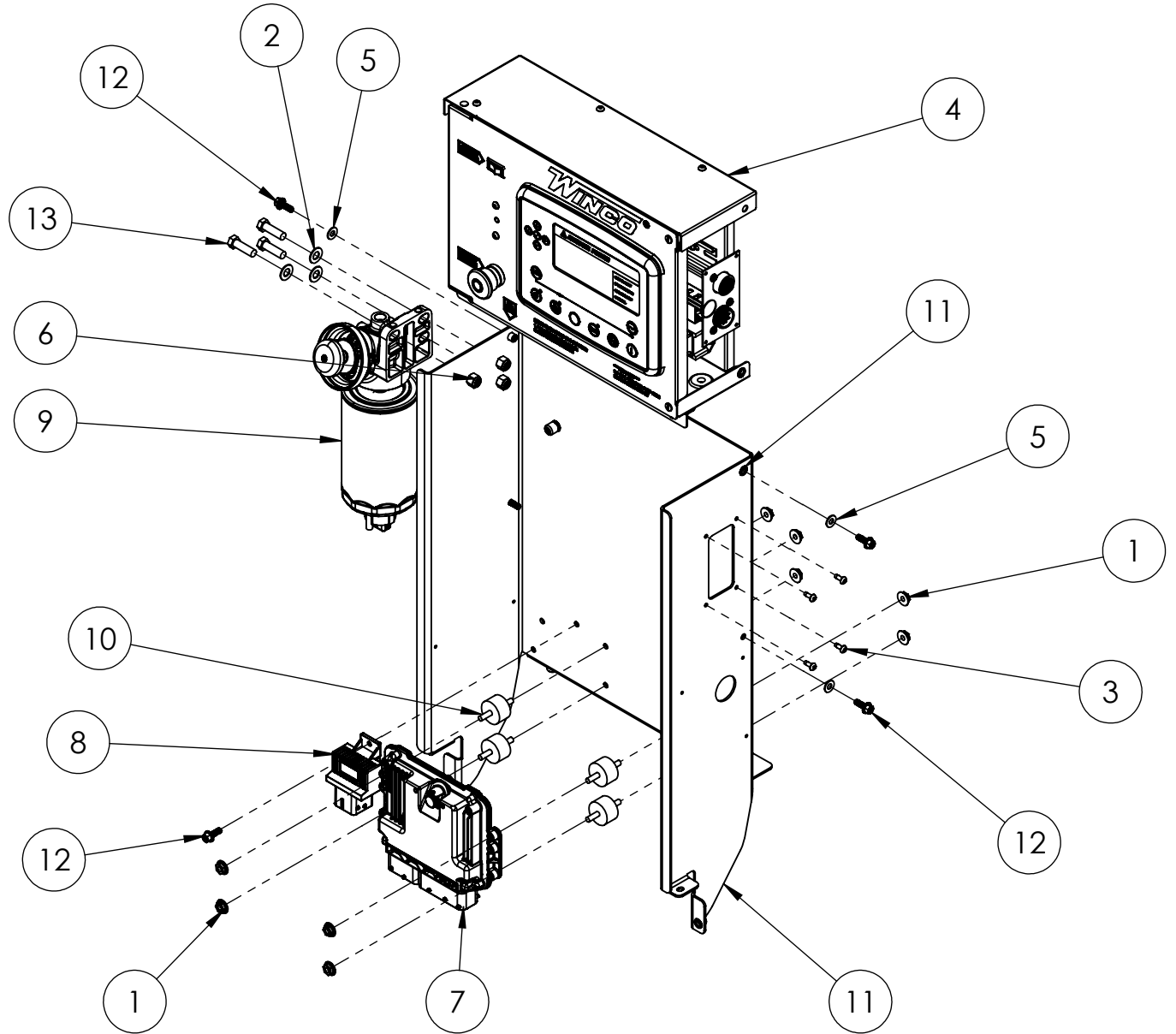


ITEM NO.	PART NUMBER	DESCRIPTION	QTY.
1	23917-005	GROMMET 1-5/16" ID	1
2	5315-000	NUT HEX 10-24 NYLON	12
3	598-000	#10 WASHER	24
4	64872-000	SOC.HCS 10-24 X 3/4 BLK	12
5	80126-004	CT 300:5 PANEL MOUNT	3
6	802050-001	GENERATOR FRONT PANEL 224	1
7	99347-025	AC HARNESS	1

\*#7 IS NOT SHOWN IN THE MODEL

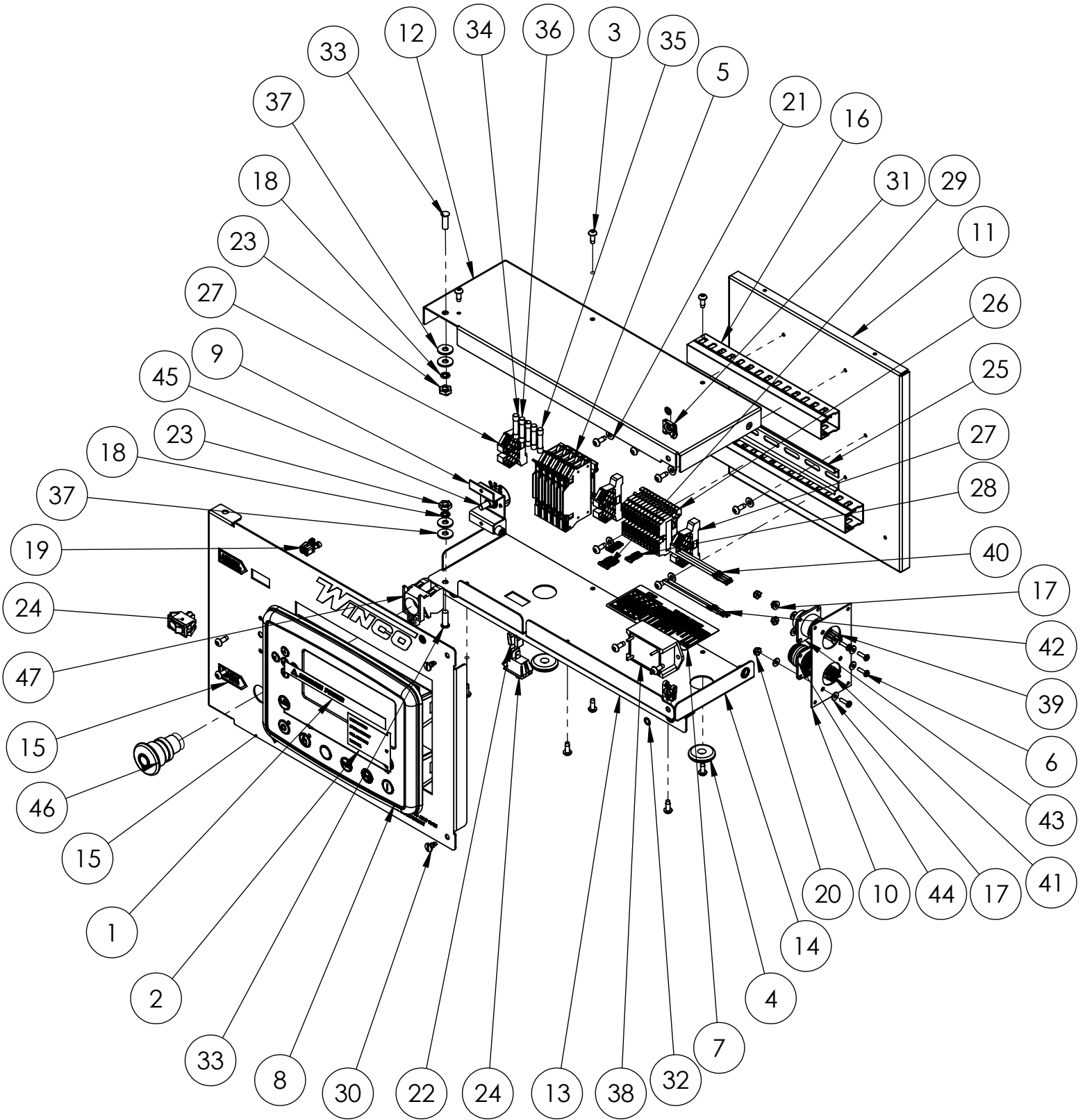


# CONTROL TOWER ASSEMBLY



ITEM NO.	PART NUMBER	DESCRIPTION	QTY.
1	16248-000	.25-20 FLANGE NUT	9
2	20604-000	3/8 WASHER	3
3	21698-001	TORX PAN HEAD SCREW #10	4
4	351891-51	ECU ENGINE CONTROLLER	1
5	512-000	.25 WASHER	4
6	56864-000*	NUT HEX 3/8-16 NYLOK	3
7	6-114	ENGINE CONTROL UNIT	1
8	6-115	GLOW PLUG CONTROLLER	1
9	6-116	FUEL PRE FILTER	1
10	71605-003	SHOCKMOUNT, BLACK, 30-35 DURO	4
11	803050-001	DE CONROL PEDISTAL	1
12	352120-2	1/4-20 X .75 FHCS	5
13	96000-003	HHCS 3/8-16 X 1.25 BLACK	3

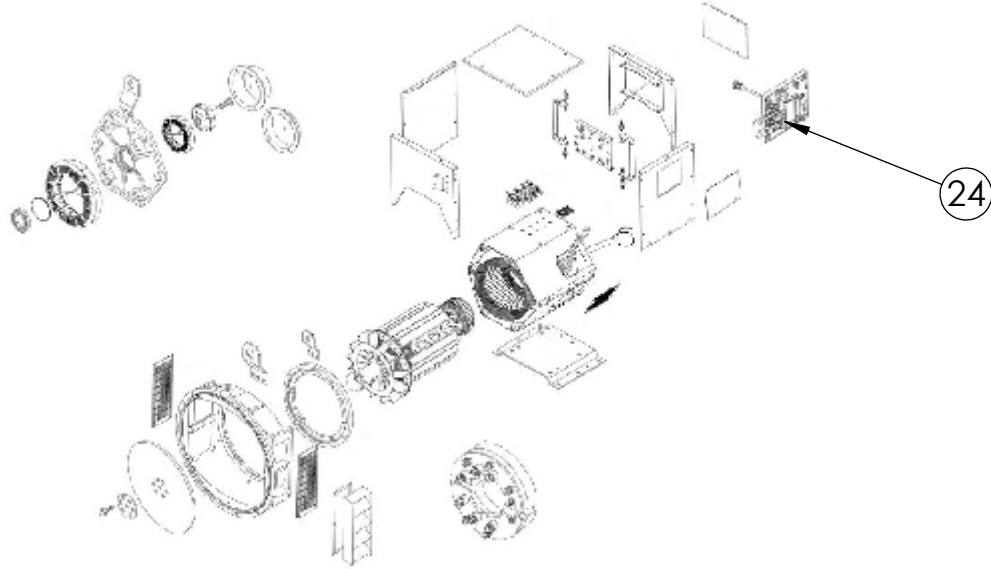
# DSE 7310 MKII ENGINE CONTROL ASSEMBLY



# DSE 7310 MKII ENGINE CONTROL ASSEMBLY CONT.

ITEM NO.	PART NUMBER	DESCRIPTION	QTY.
1	16600-005	DSE MKII ADVANCE POWER LOGO INSERT	1
2	16601-005	DSE 8610 MKII LIGHT LEGEND CARD INSERT	1
3	21698-001	TORX PAN HEAD SCREW #10	18
4	23917-002	GROMMET, .375ID X 1	2
5	2489-003	DIN RAIL FUSE HOLDER 1-1/4 X 1/4IN	5
6	24988-000	SCREW 6-32 X 1/2 BIND	4
7	351095-16	DECAL, FUSES AND TERMINAL BLOCKS	1
8	351112-29	DEEP SEA ELECTRONICS 7310 MKII	1
9	351900-36	RHEOSTAT MOUNTING BRACKET	1
10	351900-37	PLUG MOUNTING PLATE	1
11	351900-42	DIN RAIL MOUNTING PLATE	1
12	351900-43	DSE 8610 MKII CONTROL BOX TOP	1
13	351900-44	COVER SUPPORT BRACKET	1
14	351900-45	DSE8610 CONTROL BOX BOTTOM	1
15	351900-47	DSE 7310 MKII FRONT PANEL	1
16	352017-001	WIRE DUCT, 8.5IN	2
17	425-000	#6 FLATWASHER	8
18	479-000	LOCK WASHER, .25" SPLIT	2
19	48602-003	TERMINAL FEMALE 16-14 AWG .250 TAB	2
20	51802-000	NUT HEX #6-32 NYLOCK	4
21	598-000	#10 WASHER	6
22	61898-000	TERMINAL FLAG 16/14AWG .250	2
23	638-000	HEX NUT, .25IN	2
24	64089-000	SPST, ROCKER SWITCH	2
25	64551-005	DIN RAIL 9.5"	1
26	80623-009	TERMINAL BLOCK, DIN MOUNTED, SPRING CAGE	12
27	80623-010	END BLOCK, DIN MOUNTED	3
28	80623-011	2-POLE TERMINAL BLOCK JUMPER	2
29	80623-012	3-POLE TERMINAL BLOCK JUMPER	1
30	91682-001	STUD 1/4 TURN SLOTTED	2
31	91683-000	1/4 TURN CLIP NUT	2
32	91684-000	RETAINER RING 1/4 TURN SPLIT RING	2
33	94980-003	THREAD STUD .25-20 X .750	2
34	95064-006	FUSE AGC 10 AMP	1
35	95064-008	FUSE AGC 2 AMP	3
36	95064-000	FUSE AGC 3 AMP	1
37	96286-001	1/4" NYLON WASHER	4
38	96333-001	LOW COOLANT MODULE	1
39	96923-001	TERMINAL, SOCKET, 18-16AWG	10
40	96923-101	PLUG TERMINAL	4
41	96924-001	TERMINAL, PIN, 18-16AWG	13
42	96924-101	PLUG TERMINAL	3
43	96925-002	14 PIN CONNECTOR	1
44	96925-006	16 PIN CONNECTOR	1
45	97517-001	REOSTAT	1
46	99783-001	SWITCH, PUSH-PULL	1
47	99783-002	SWITCH CONTACT	1

# GENERATOR EXPLODED VIEW

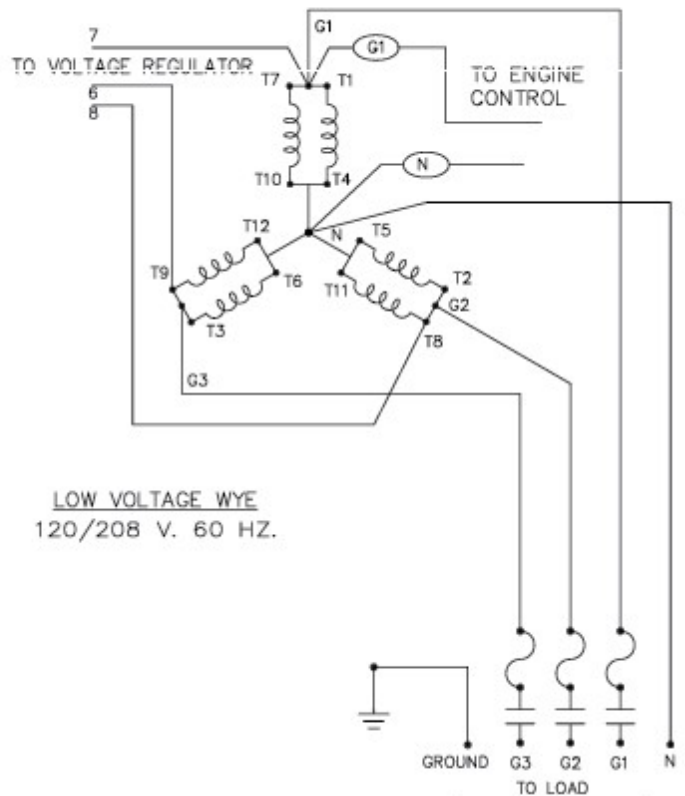
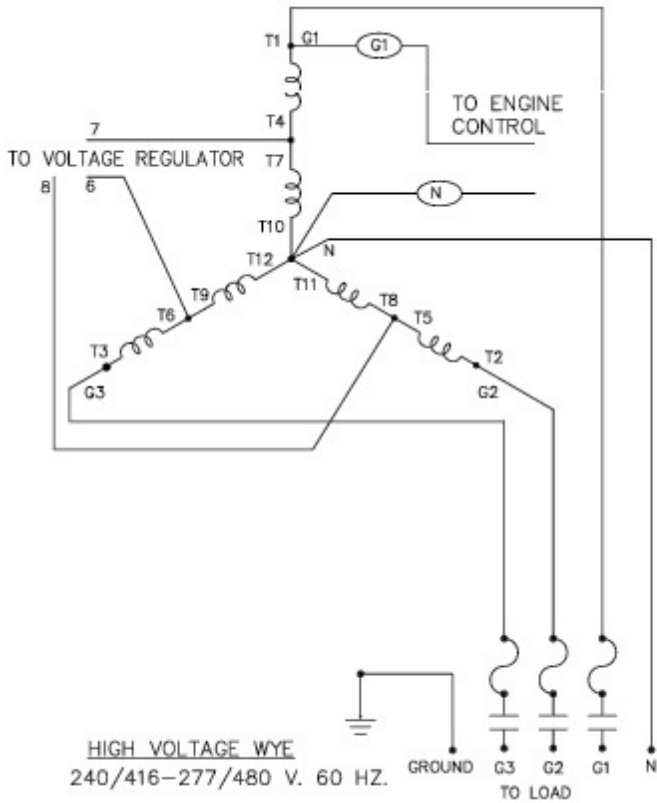


EXPECTED RESISTANCE ( $\Omega$ ) @ 22C	
MODEL	UCI224E 311
STATOR WINDING (PER PHASE SERIES CONNECTED)	0.101
ROTOR WINDING	0.69
EXCITER STATOR	20
EXCITER ROTOR (PER PHASE)	0.078
POSITIVE SEQUENCE (R1)	0.09
NEGATIVE SEQUENCE (R2)	0.14
ZERO SEQUENCE (R0)	0.09

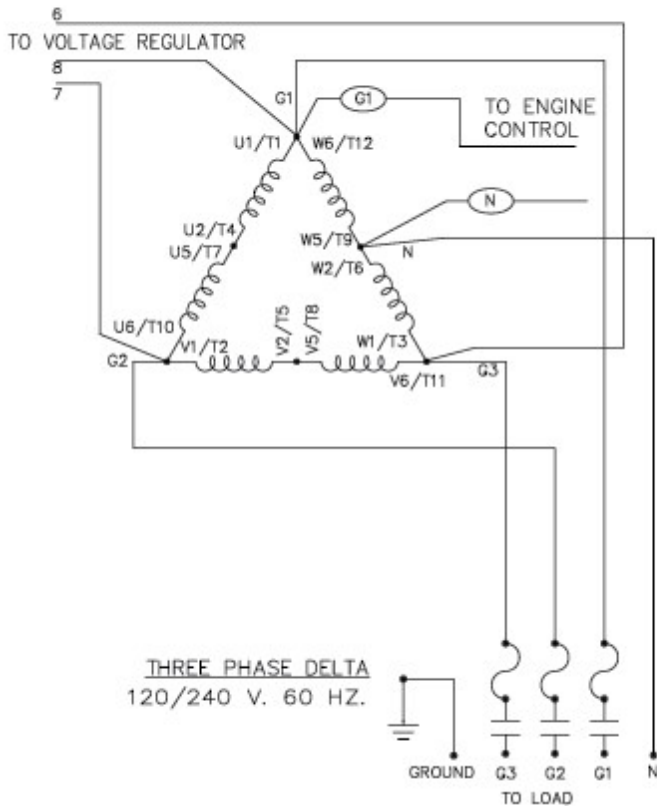
ITEM	DESCRIPTION	DE50F4
-	COMPLETE GENERATOR END	351930-3
-	STAMFORD MODEL	UCI224E
-	WINDING	311
24	AVR AS440	350818-2
For additional parts support, contact WINCO service		

# GENERATOR WIRING

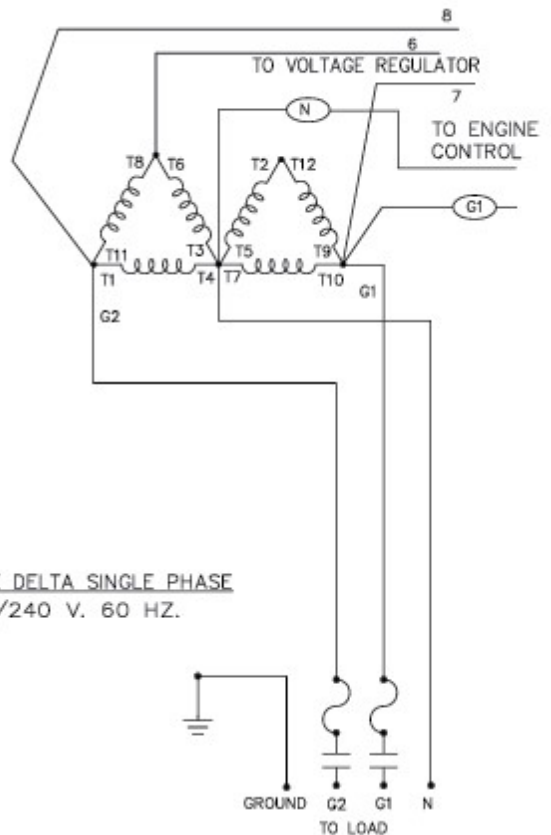
## THREE PHASE AC WIRE HIGH AND LOW WYE



## THREE PHASE AC WIRING-DELTA



## SINGLE PHASE 311 WINDING





# ENGINE HARNESS

