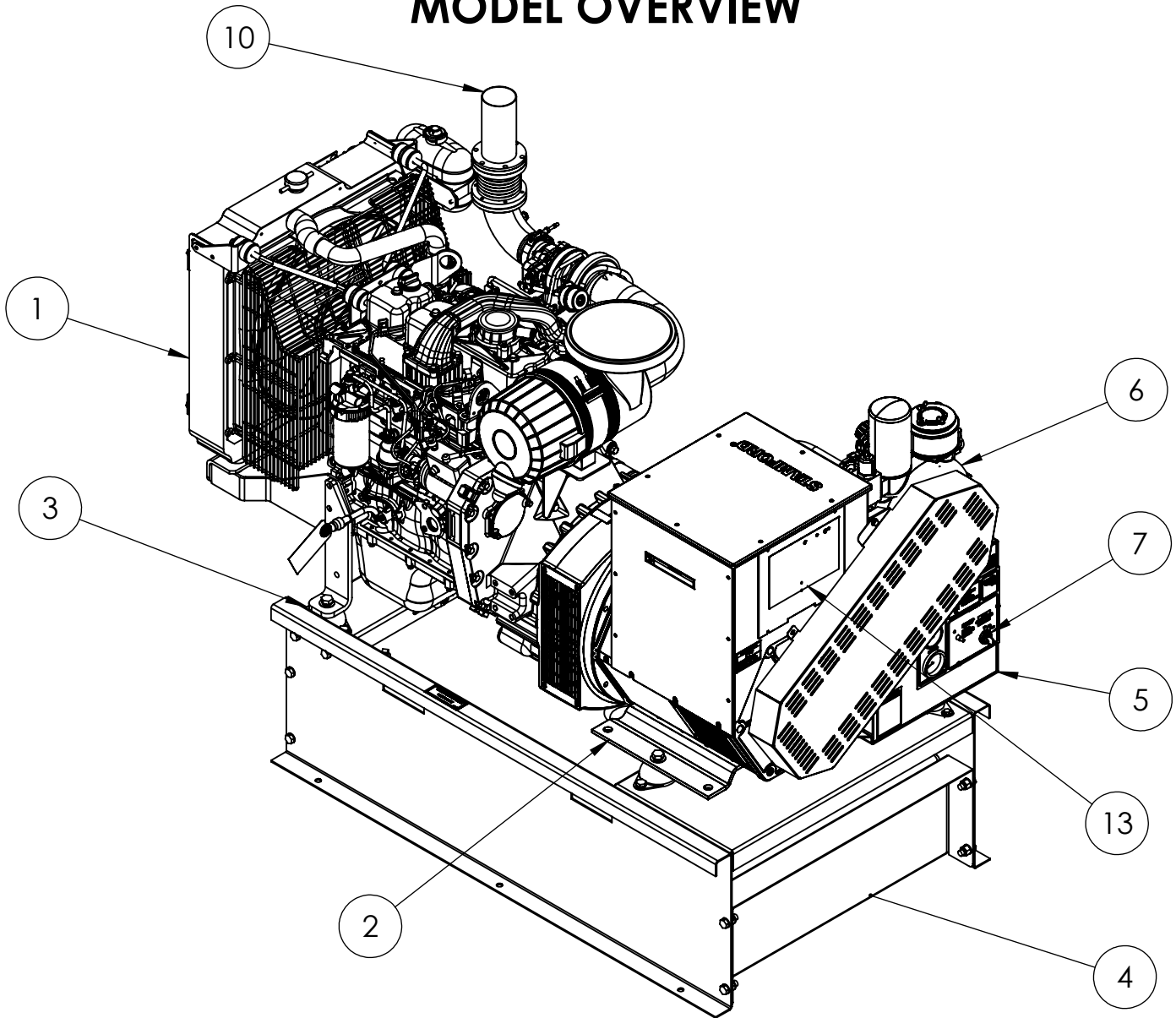


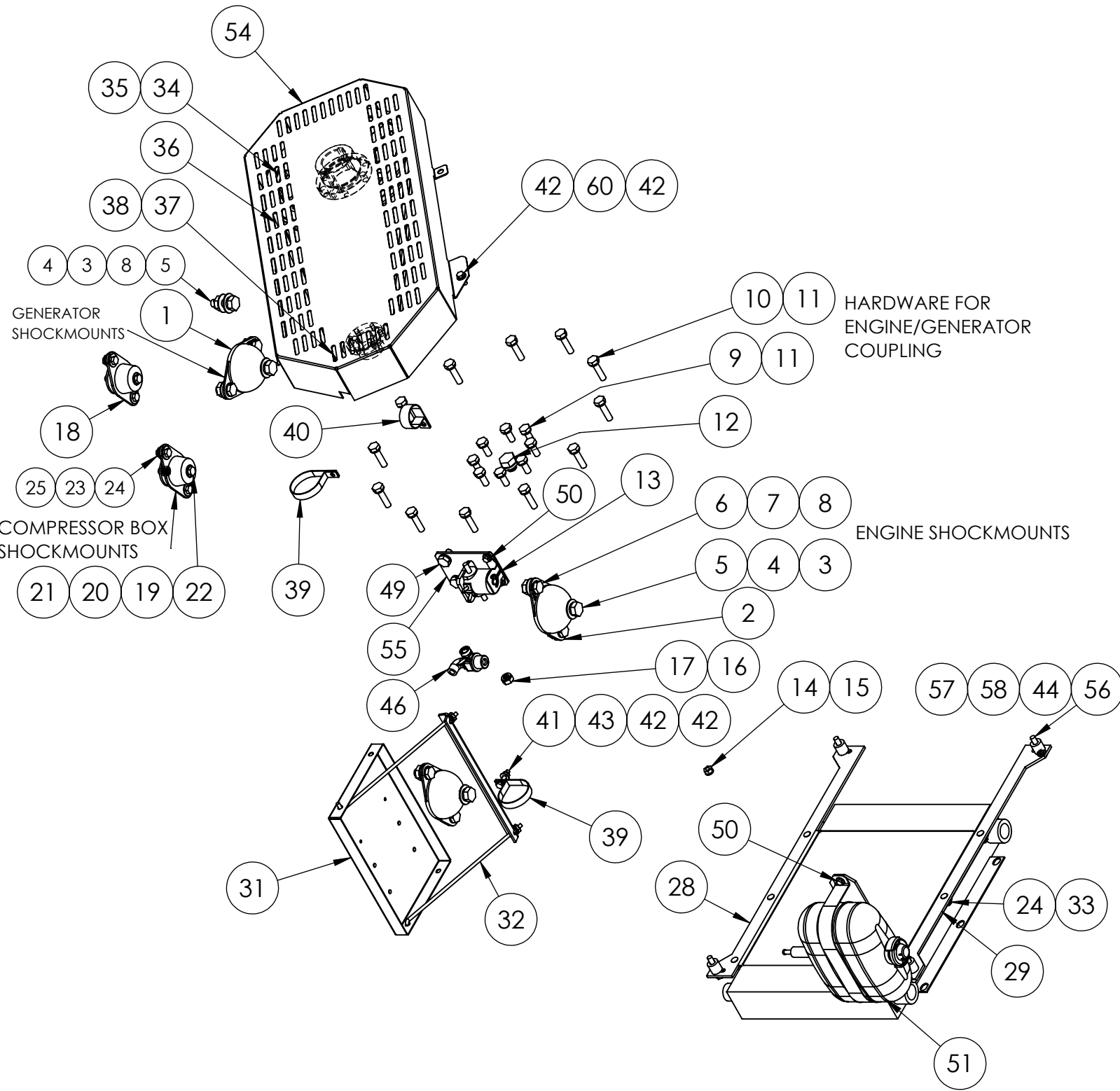
WINCO Service
Phone: 507-357-6831
Email: service@wincogen.com
www.wincogen.com

MODEL OVERVIEW



ITEM NO.	PartNo	DESCRIPTION	QTY.
1	350001-61	ENGINE IVECO NEF45SM2X	1
2	351930-111	UC1224C NDE-PTO 311 WDG UL1004	1
3	806044-000	HARDWARE KIT	1
4	801044-000	BASE ASSEMBLY, 54 GAL TANK	1
5	802044-000	COMPRESSOR/CONTROL BOX	1
6	352108-000	NK31 AIR END	1
7	802044-014	KEY START CONTROL PANEL ASSEMBLY	1
8	352020-12	BATTERY CHARGER KIT 12V 2AMP	1
9	80781-016	COOLANT HEATER	1
10	807045-000	EXHAUST PIPE W/ FLANGE	1
11	806044-100	COMPRESSOR SENSORS AND AIR/OIL ROUTEING	1
12	811044-000	ENGINE HARNESS	1
13	15715-090	DECAL AND NAMEPLATE INSTALLATION	1
14	350093-10	INDUSTRIAL SILENCER	1

HARDWARE

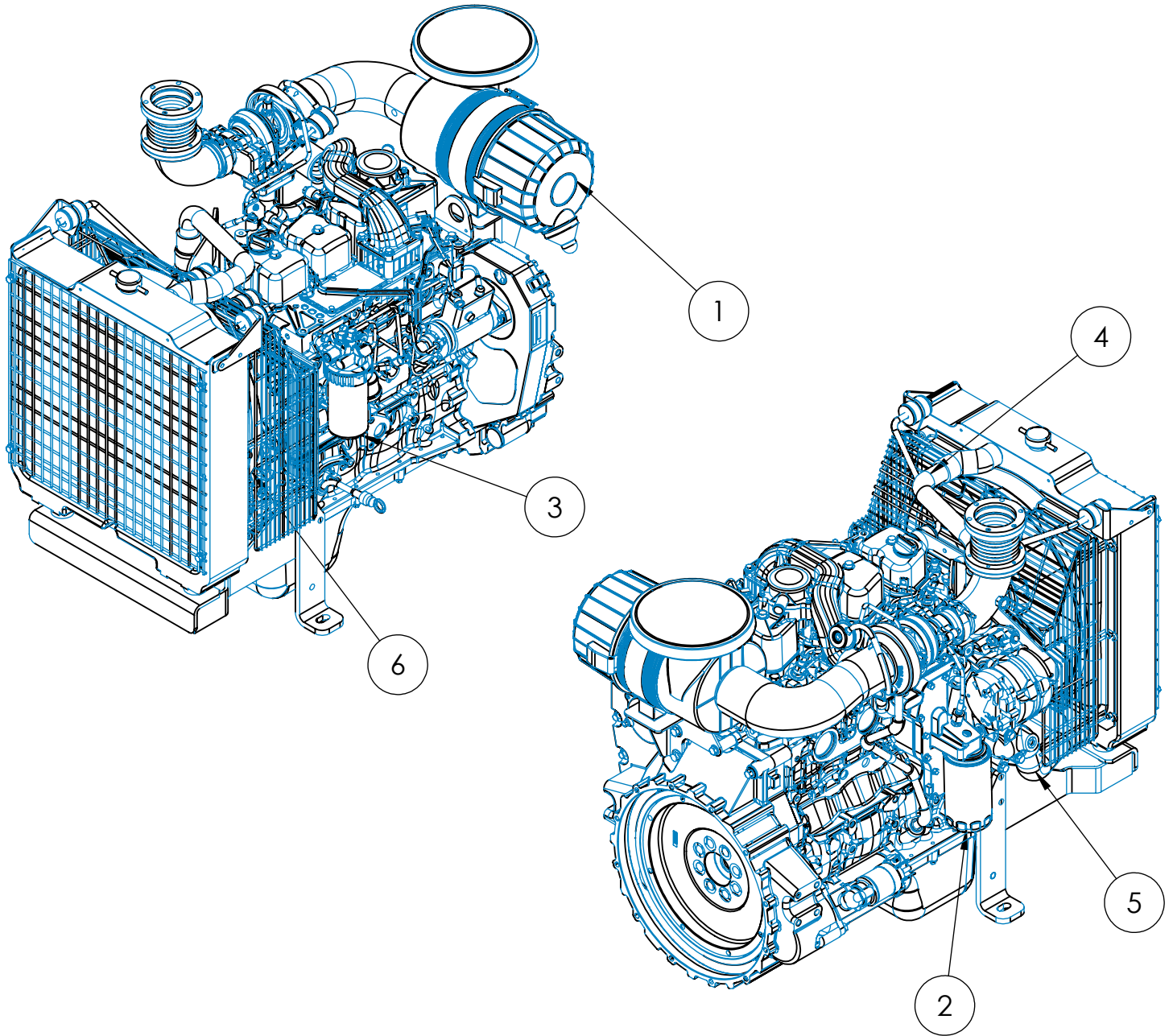


HARDWARE BOM

ITEM NO.	PartNo	DESCRIPTION	QTY.
1	98956-001	SHOCKMOUNT 40 DURO (GREEN DOT)	2
2	98956-002	SHOCKMOUNT 50 DURO (YELLOW DOT)	2
3	21867-000	FLAT WASHER	5
4	636-000	LOCKWASHER 1/2 SPLIT	5
5	57580-000	HHCS 1/2-13 X 1.5 GR5	5
6	48178-000	HHCS 1/2-13 X 1	8
7	21867-001	FLAT WASHER .51 X .88 X .05	8
8	16248-001	.5-13 FLANGE NUT	9
9	96003-025	M10-1.5X25MM	8
10	96003-040	HHCS M10-1.5X 40MM BLACK	12
11	97436-010	M10 LOCKWASHER	20
12	15012-002	FLYWHEEL PLUG, IVECO	1
13	80980-000	START SOLENOID	1
14	94442-003	NUT HEX M8-1.25 ZINC	1
15	93341-008	LOCKWASHER M8	1
16	93341-010	LOCKWASHER M10 ZINC	1
17	94442-005	NUT HEX M10-1.5	1
18	98807-000	SHOCKMOUNT 40 DURO	2
19	20604-000	3/8 WASHER	2
20	98806-000	WASHER .406 X 2	2
21	56864-000	ELASTIC STOP NUT .375-16	2
22	91658-007	3/8-16X2.5	2
23	526-000	5/16 FLAT WASHER	4
24	16249-000	.3125-18 FLANGE	10
25	467-000	HHCS 5/16-18X.75	4
26	95568-000	THREAD STUD 10-24 X .625	4
27	99671-000	#10-24 HEX NUT	4
28	802044-017	RADIATOR SUPPORT BRACKET	1
29	802044-021	RADIATOR SUPPORT BRACKET FOR OVERFLOW TANK	1
30	352108-001	NK31 AIR/OIL COOLER	1
31	350110-2	BATTERY TRAY GROUP 24	1

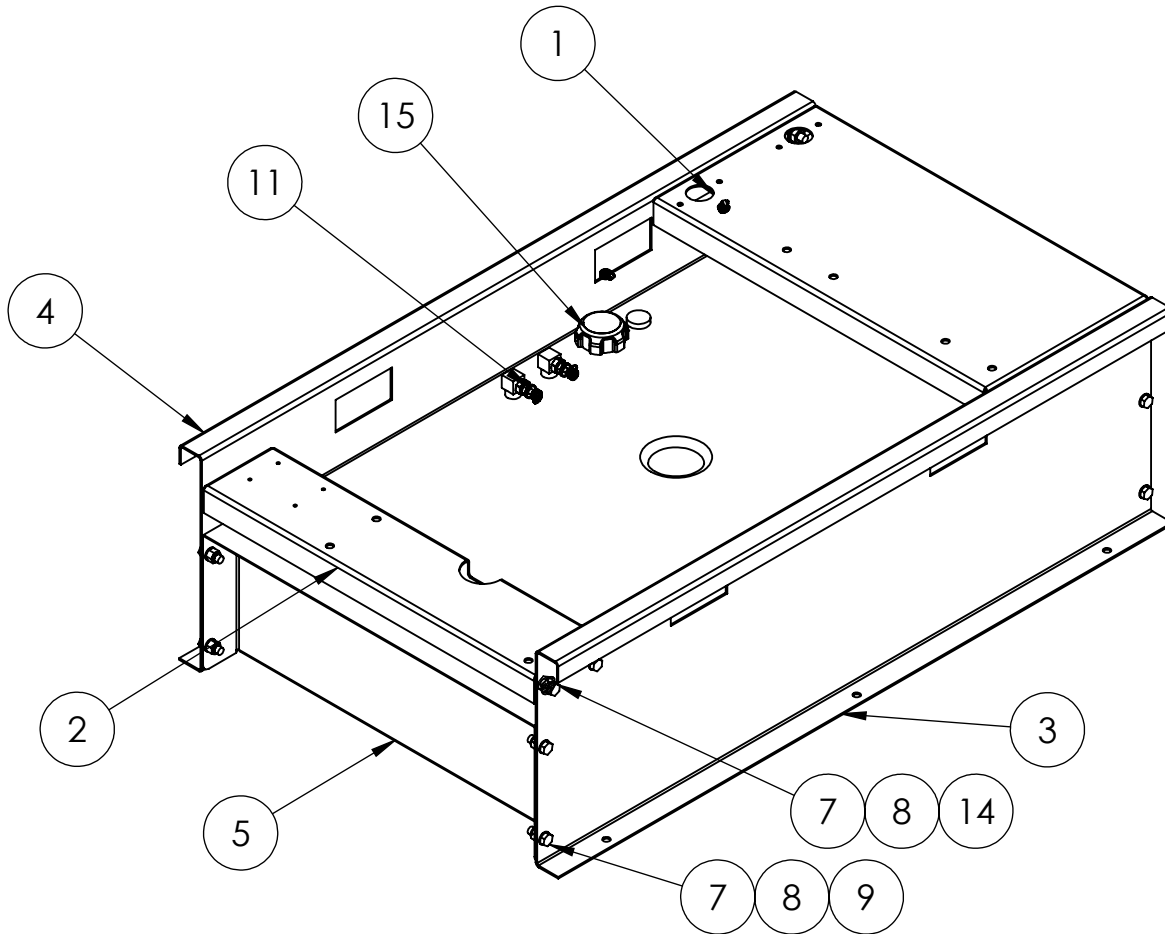
ITEM NO.	PartNo	DESCRIPTION	QTY.
32	99288-003	BATTERY RACK KIT (GROUP 24)	1
33	98879-001	THREAD STUD 5/16-18 X .75	6
34	96935-003	2 3V 1060 SK V BELT PULLEY	1
35	96935-007	SX X 1.75" QD BUSHING	1
36	95638-004	3VX630 V BELT	2
37	96935-004	2 3V 475 SH V BELT PULLEY	1
38	96935-006	SH X 28MM QD BUSHING	1
39	97391-011	TUBE CLAMP 2.25"	2
40	97391-008	TUBE CLAMP 1.25"	1
41	95281-000	.25-20X1.25 HHB	1
42	512-000	.25 WASHER	5
43	47517-000	.25-20 NYLOCK	1
44	62825-013	SPACER .75 OD, .378 ID, .75 LONG	4
45	1744-000	NUT HEX 1/2-13	4
46	98906-018	OIL DRAIN VALVE M22 X 5/8 90HB	1
47	93341-012	LOCKWASHER M12 ZINC	2
48	20039-000	LOCKWASHER 1/2 EXTERNAL TOOTH	2
49	94270-020	HHCS M12-175X 20MM	2
50	55440-000	.25-02X.5 SELF TAP	4
51	300553	KIT COOLANT RECOVERY	1
52	93402-003	HOLE PLUG 1" DIA.	1
53	93402-001	HOLE PLUG .8125" DIA.	2
54	806044-001	BELT GUARD	1
55	350740-2	MOUNTING BRACKET START SOLENOID	1
56	96002-040	M8-1.25X40MM	4
57	97436-008	LOCKWASHER M8	4
58	63841-008	M8 X 16MM FLAT WASHER	4
59	S205686	3/8 X 3/8 X 1-3/8 KEY	1
60	479-000	LOCK WASHER, .25" SPLIT	3
61	466-000	.25-20X.75 HHB	3

ENGINE PARTS



ITEM NO.	PART NUMBER	DESCRIPTION	QTY.
1	6-100	AIR FILTER	1
2	6-101	OIL FILTER	1
3	6-102	FUEL FILTER	1
4	6-103	UPPER RADIATOR HOSE	1
5	6-104	LOWER RADIATOR HOSE	1
6	6-105	FAN BELT	1

BASE AND FUEL TANK ASSEMBLY

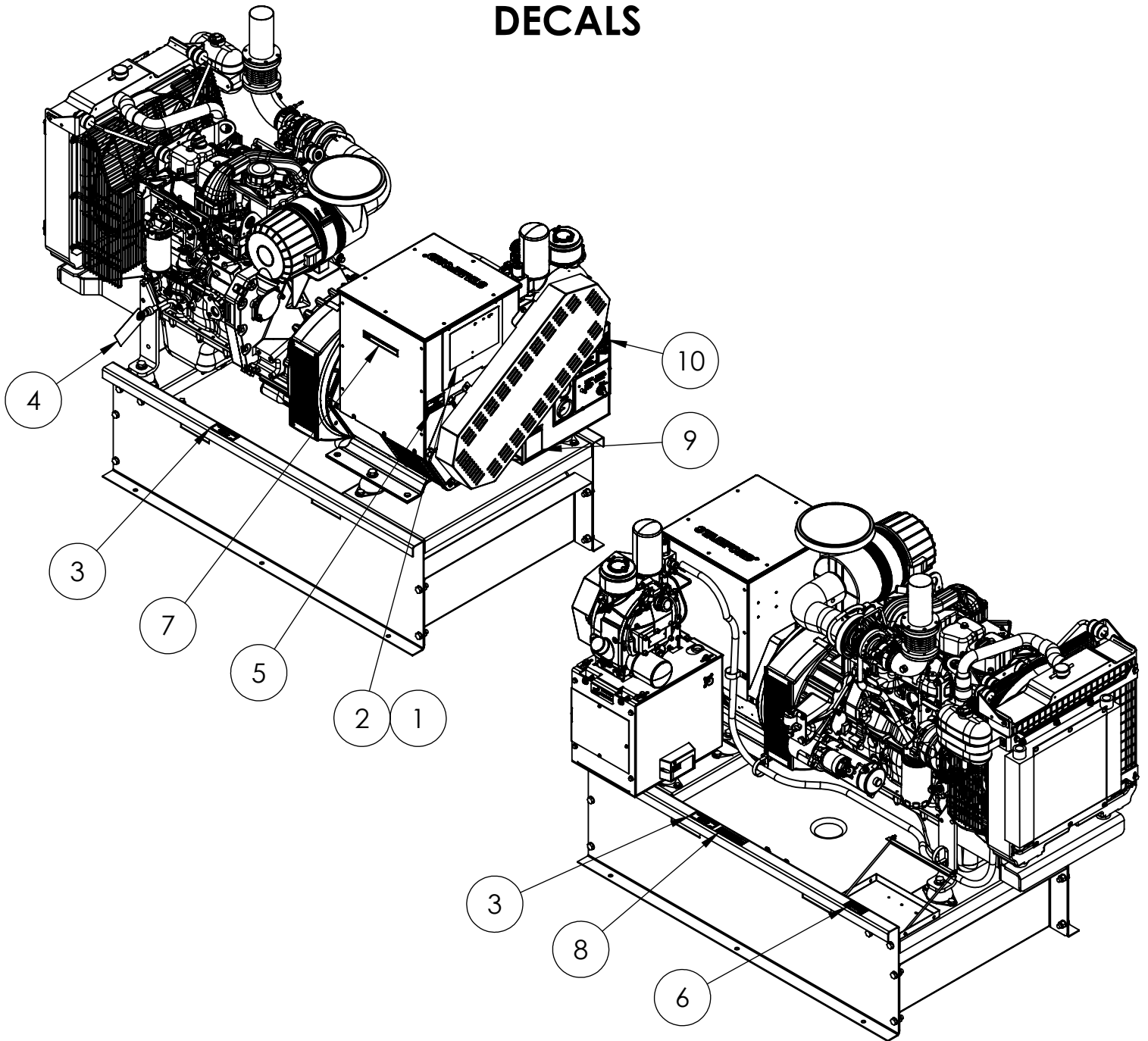


ITEM NO.	PartNo	DESCRIPTION	QTY.
1	801044-004	GENERATOR CROSSMEMBER	1
2	801044-003	ENGINE CROSSMEMBER	1
3	801044-001	LEFT SIDE RAIL, TALL	1
4	801044-002	RIGHT SIDE RAIL, TALL	1
5	801044-006	BASE FRAME END CAP, TALL	2
6	350041-118	54 GALLON FUEL TANK	1
7	1516-000	.5-12X1.25 HHB	16
8	21867-001	FLAT WASHER .51 X .88 X .05	24
9	92242-000	NUT HEX .500-13 NYLOCK	8
10	56372-001	HEX REDUCER BUSHING 1/2 -3/8 NPT BRASS	2
11	94319-010	HOSE FITTING 3/8-18NPT X .3125 HOSE BARB	2
12	93564-000	PIPE PLUG 3/4 SQUARE HEAD	1
13	81018-009	HOSE CLAMP .625-.250	4
14	16248-001	.5-13 FLANGE NUT	8
15	62398-000	FUEL CAP AND GAUGE, TWO WAY VENT, 10IN, DIESEL	1
16	55506-000	HOSE 5/16 ID UNCUT RUBBER	8.5 FT

SUPPLY HOSE: 52"

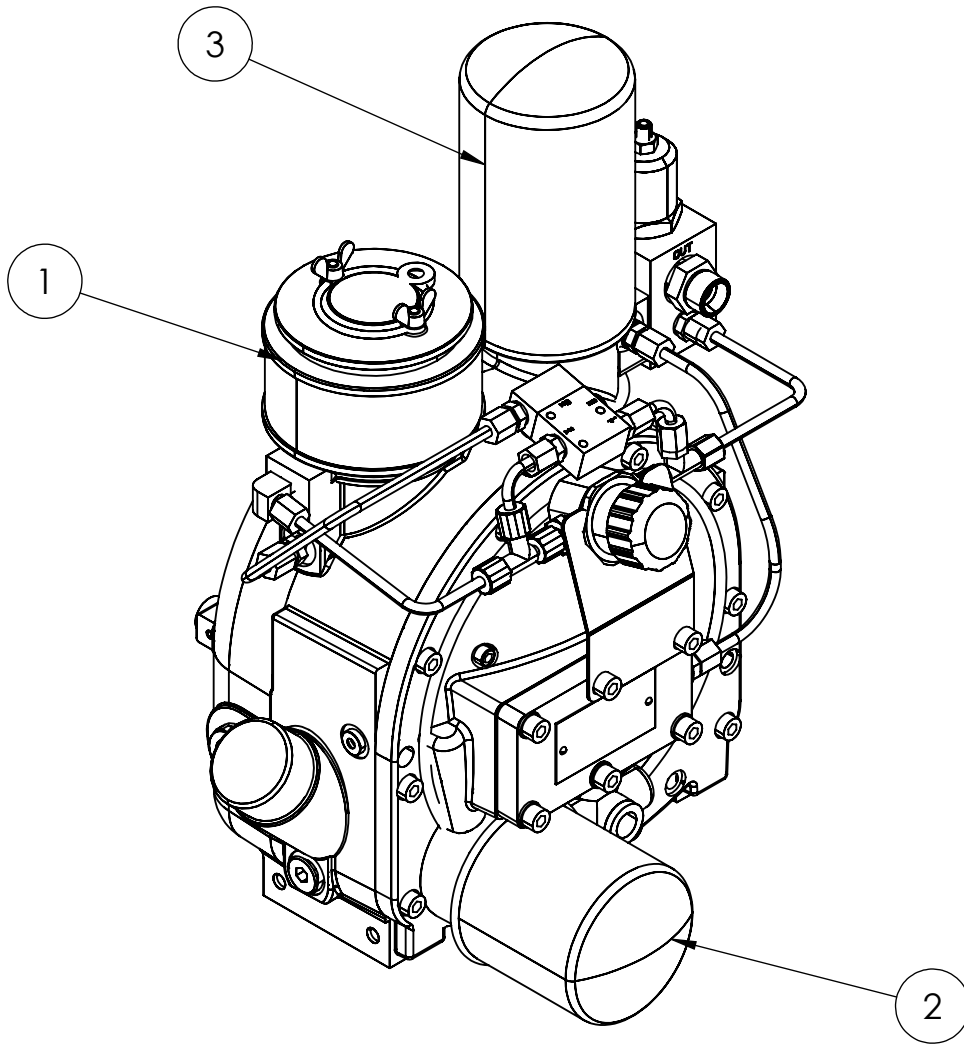
RETURN HOSE: 50"

DECALS



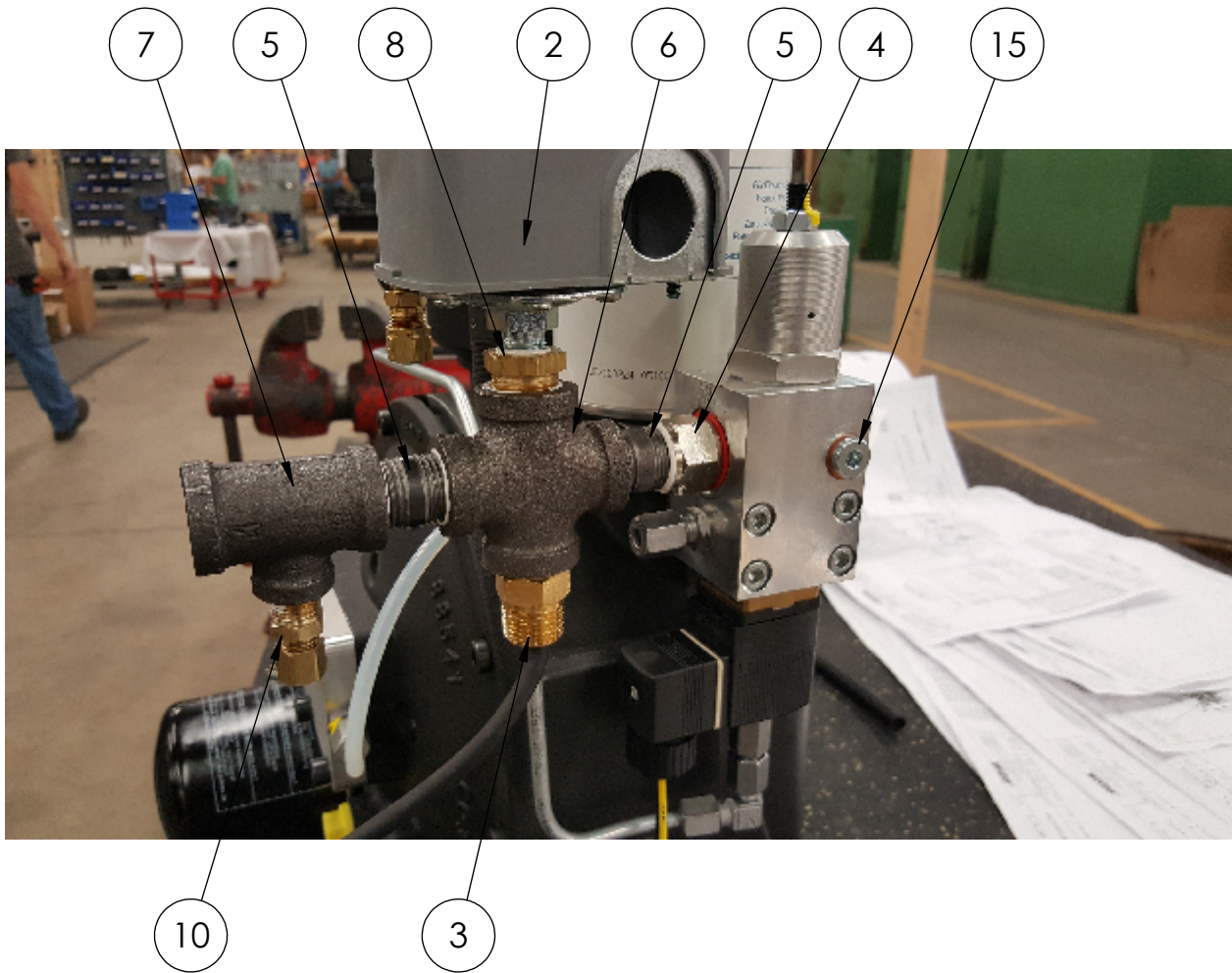
ITEM NO.	PartNo	DESCRIPTION	QTY.
1	16505-011	NAME PLATE	1
2	16506-004	NAME PLATE OVERLAY	1
3	97381-001	DECAL-DIESEL FUEL ONLY	2
4	60710-097	TAG OIL WARNING	1
5	15209-002	DECAL-DANGER CARBON MONOXIDE	1
6	15209-022	DECAL OPEN SKID EXHAUST	1
7	15209-003	UL-DECAL ELECTRICAL SHOCK CAN KILL	1
8	15209-001	GASOLINE DECAL	1
9	97813-000	DECAL-WARNING CYCLE CRANK	1
10	63941-004	DECAL FUSE WARNING (ENGLISH)	1

AIR COMPRESSOR



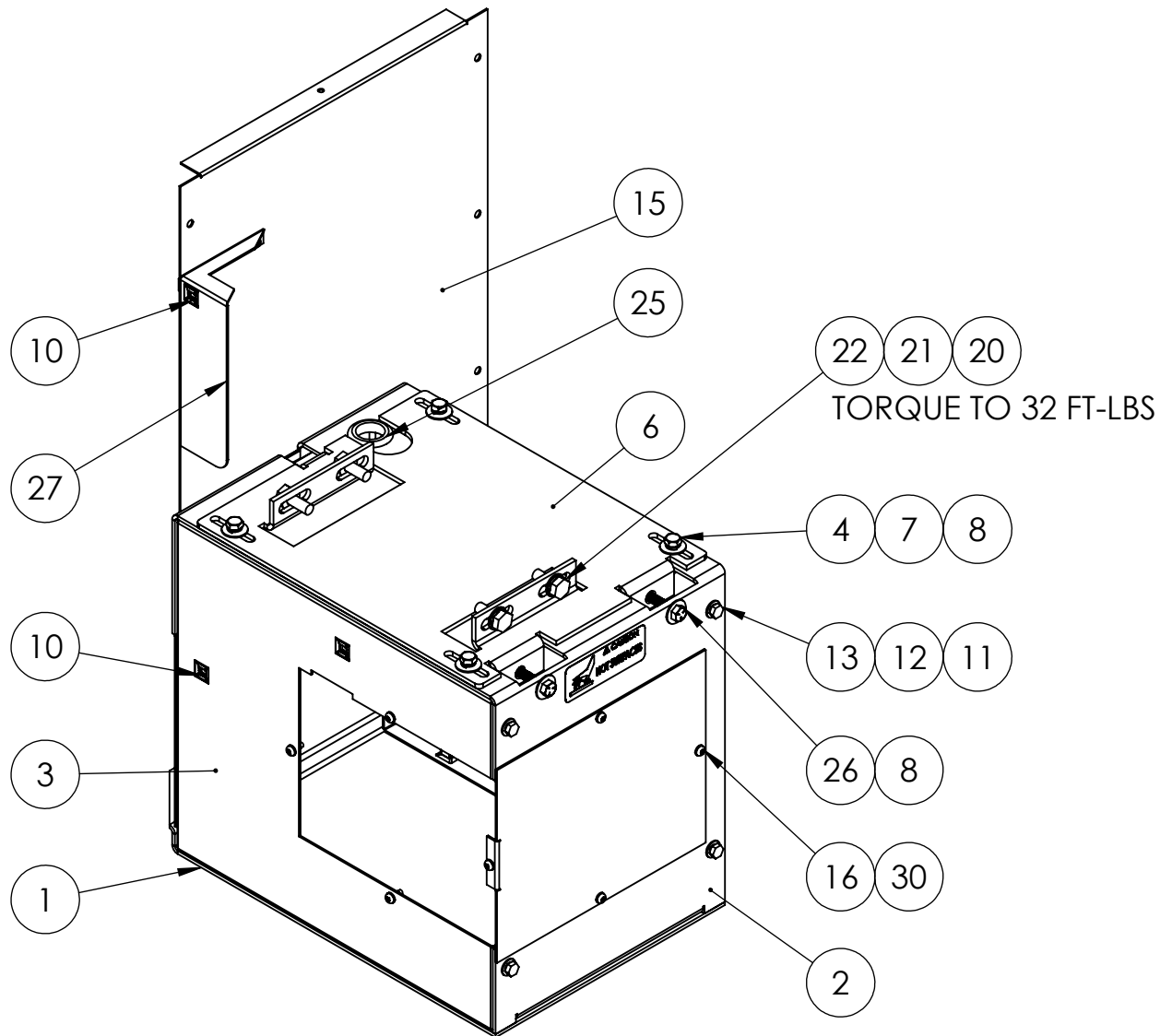
ITEM NO.	PART NUMBER	DESCRIPTION	QTY.
1	11-100	AIR FILTER	1
2	11-101	OIL FILTER	1
3	11-102	SEPARATOR FILTER	1

COMPRESSOR HOSES, SENSORS, AND FITTINGS



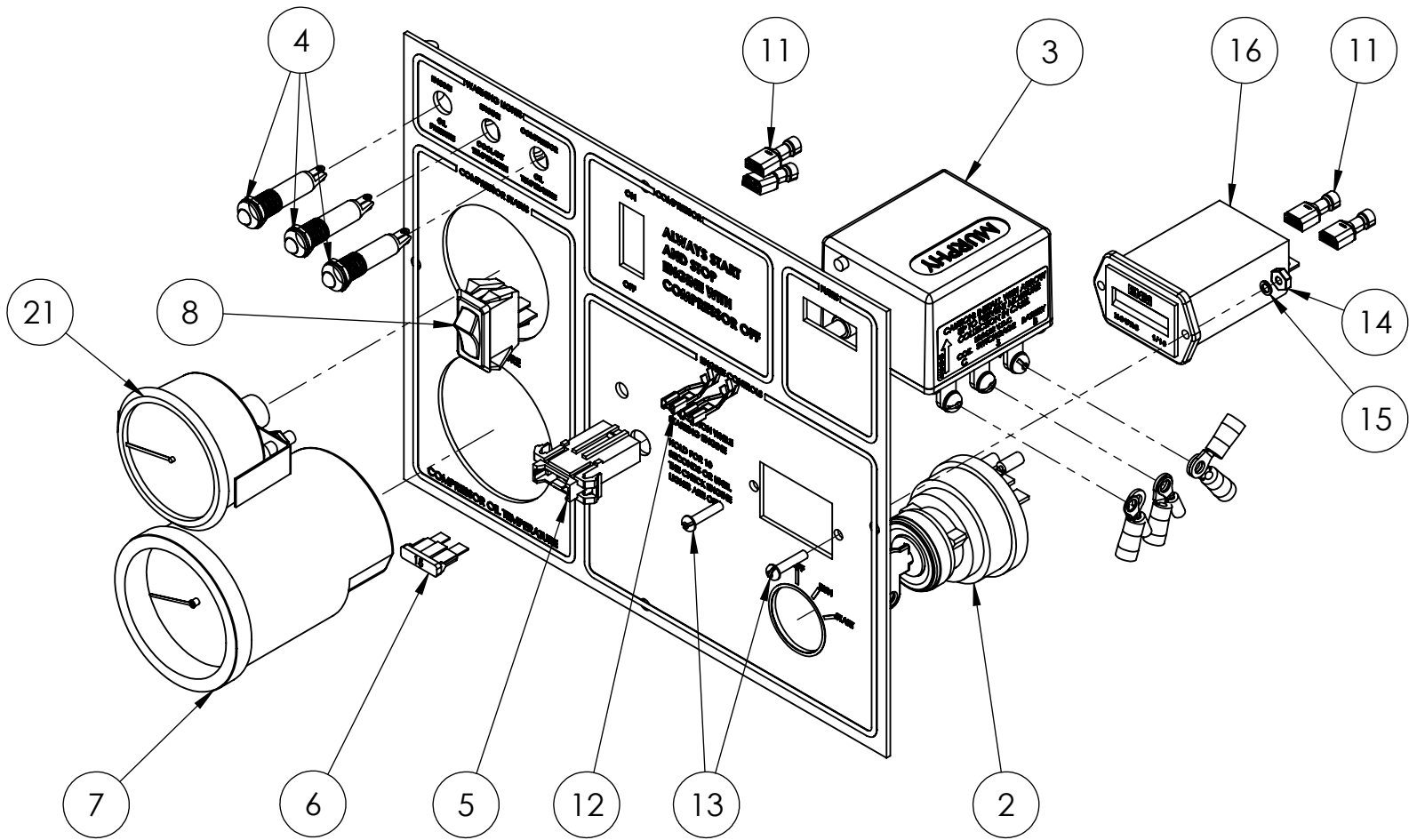
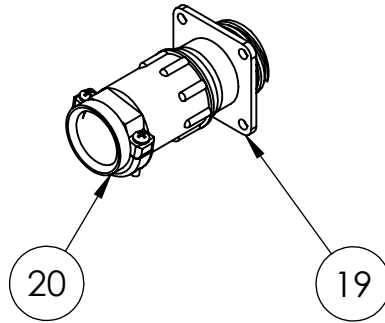
ITEM NO.	PART NUMBER	DESCRIPTION	QTY.
1	352108-002	200PSI SAFETY VALVE	1
2	352108-003	PRESSURE SWITCH, LOAD/UNLOAD, 30PSI DIFFERENTIAL	1
3	352108-005	BACKUP OIL TEMP SWITCH	1
4	80952-004	1/2" MALE BSPP X 1/2" FEMALE NPT ADAPTOR	1
5	21089-000	1/2" NPT 1.5" EXTENSION	2
6	94909-000	1/2" PIPE CROSS	1
7	94906-003	1/2" X 1/4" X 1/2" PIPE TEE	1
8	93947-000	1/2" MALE NPT TO 1/4" FEMALE NPT REDUCER	1
9	352108-008	1/4IN TUBE TO 1/4NPT FEMALE COMPRESSION FITTING	1
10	352108-009	1/4IN TUBE TO 1/4NPT MALE COMPRESSION FITTING	1
11	352108-010-1	1/4IN FLEXIBLE NYLON TUBE	4 FT
12	350046-000	OIL COOLER HOSE ASSEMBLY SHORT	1
13	350046-001	OIL COOLER HOSE ASSEMBLY LONG	1
14	350046-002	AIR LINE ASSEMBLY	1
15	96040-004	1/8" BSPP PIPE PLUG	1

COMPRESSOR/CONTROL BOX



ITEM NO.	PartNo	DESCRIPTION	QTY.	ITEM NO.	PartNo	DESCRIPTION	QTY.
1	802044-001	COMPRESSOR BASE	1	16	21698-001	TORX PAN HEAD SCREW #10	9
2	802044-002	COMPRESSOR PEDESTAL	1	17	7792-000	RHMS 6-32 X .625	4
3	802044-003	CONTROL BOX BACK SIDE	1	18	425-000	#6 FLATWASHER	8
4	1116-000	HHCS .3125-18X1	4	19	51802-000	NUT HEX #6-32 NYLOCK	4
5	92419-001	5/16 - 18 12GA TINNEMAN NUT	4	20	93548-000	FLAT WSH METRIC M10 X 21MM	4
6	802044-020	COMPRESSOR MOUNTING PLATE W/WELD NUTS	1	21	97436-010	M10 LOCKWASHER	4
7	480-000	LOCK .3125 SPLIT	4	22	96003-025	M10-1.5X25MM	4
8	526-000	5/16 FLAT WASHER	6	23	58684-009	EDGE TRIM 14IN	1
9	802044-004	CONTROL BOX FRONT SIDE	1	24	802044-018	COMPRESSOR BOX BACK SIDE COVER	1
10	92495-002	1/4-20 TINNEMAN (12 GA)	13	25	62486-000	GROMMET 1 X 1.375	1
11	512-000	.25 WASHER	10	26	57523-001	HHCS 5/16-18X3 GR5 FULL THREAD	2
12	479-000	LOCK WASHER, .25" SPLIT	10	27	806044-002	BELT GUARD BRACKET	1
13	466-000	.25-20X.75 HHB	6	28	63941-012	DECAL-HOT SURFACES	1
14	802044-007	COMPRESSOR CONTROL CUTOUT COVER	1	29	476-000	.25-20X.625 HHB	4
15	802044-008	UC224C RIGHT SIDE PANEL	1	30	96286-002	FLAT WASHER NYLON	9

KEY START CONTROL PANEL



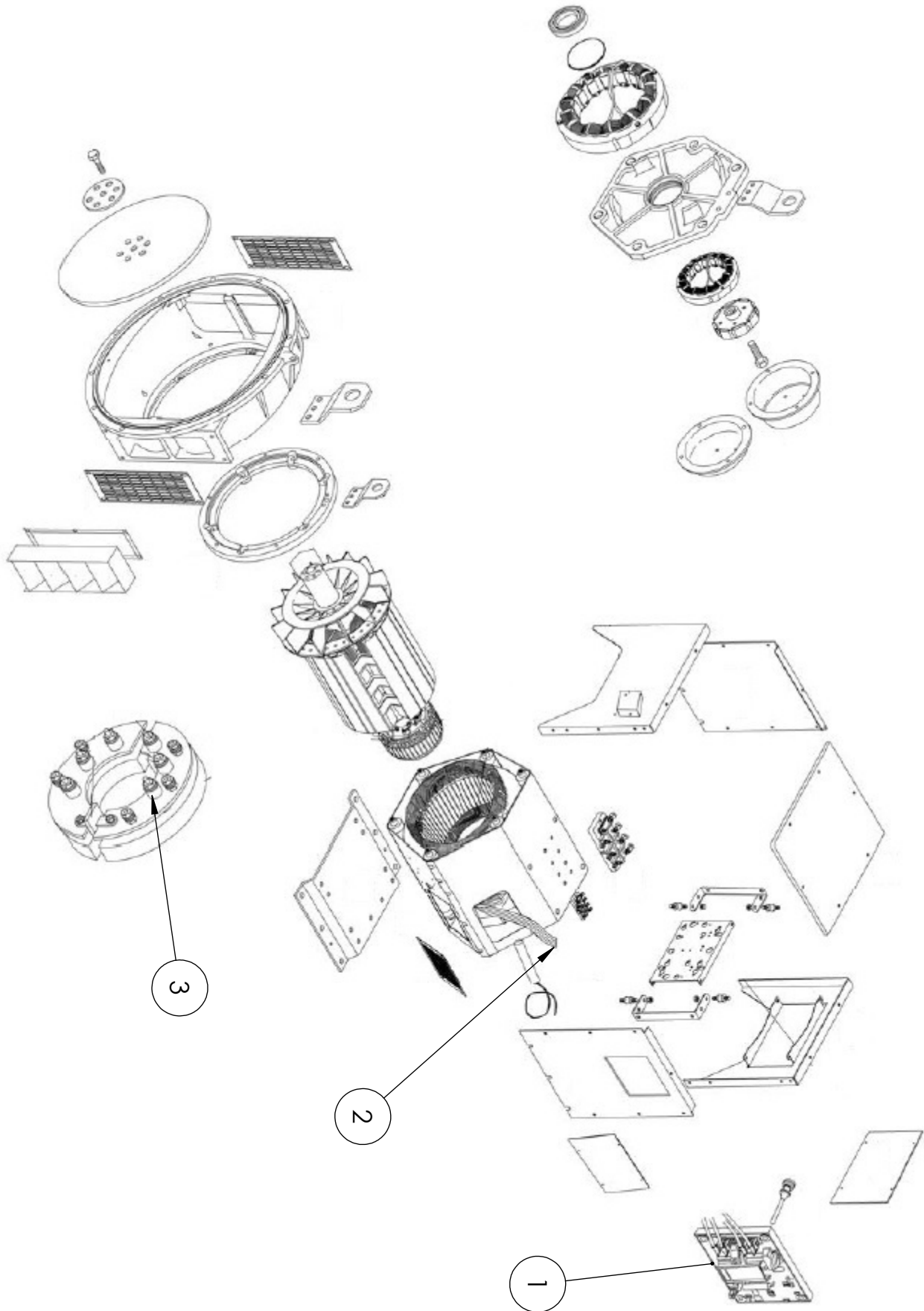
KEY START CONTROL PANEL BOM

ITEM NO.	PartNo	DESCRIPTION	QTY.
1	802044-016	KEY START CONTROL PANEL WITH SILKSCREEN	1
2	72252-001	SWITCH START (ON)-OFF-ON-(ON)	1
3	91688-001	SAFETY LATCHING RELAY	1
4	57991-007	INDICATOR LIGHT, RED, NO BEZEL	3
5	2489-002	ATO-ATC FUSE HOLDER PANEL MOUNT	1
6	95064-115	15 AMP ATO-ATC FUSE	1
7	352108-004	OIL TEMP SWITCH IAT-ROTARY	1
8	64089-000	SPST, ROCKER SWITCH	1
9	4158-000	TERMINAL RING 16-14 AWG #10	4
10	81963-001	TERMINAL RING 22-16 AWG #10 STUD	5
11	48602-003	TERMINAL FEMALE 16-14 AWG .250 TAB	4
12	48602-034	TERMINAL FEMALE .250 FOR SPADE FUSE HOLDERS	2
13	7792-000	RHMS 6-32 X .625	2
14	394-000	NUT HEX #6-32	2
15	566-000	#6 STD. SPLIT LOCKWASHER	2
16	58166-006	ELAPSED TIME METER 10-80VDC	1
17	22370-007	TERMINAL SPADE 16/14AWG #10STUD	3
18	96924-001	TERMINAL, PIN, 18-16AWG	7
19	96925-006	16 PIN CONNECTOR	1
20	99555-001	ADAPTER STRAIN RELIEF	1
21	352108-006	2IN PANEL MOUNT PRESSURE GAUGE	1
22	44791-000	TERMINAL CLOSED CONNECTOR	3
23	62029-001	DIODE ASSEMBLY	3
24	22370-013	TERMINAL SPADE, 12-10AWG, #10 STUD	1
25	91540-001	TERM., RING, 6AWG, 1/2 STUD	1
26	41316-000	TERMINAL, RING, 6AWG, 5/16 STUD	1

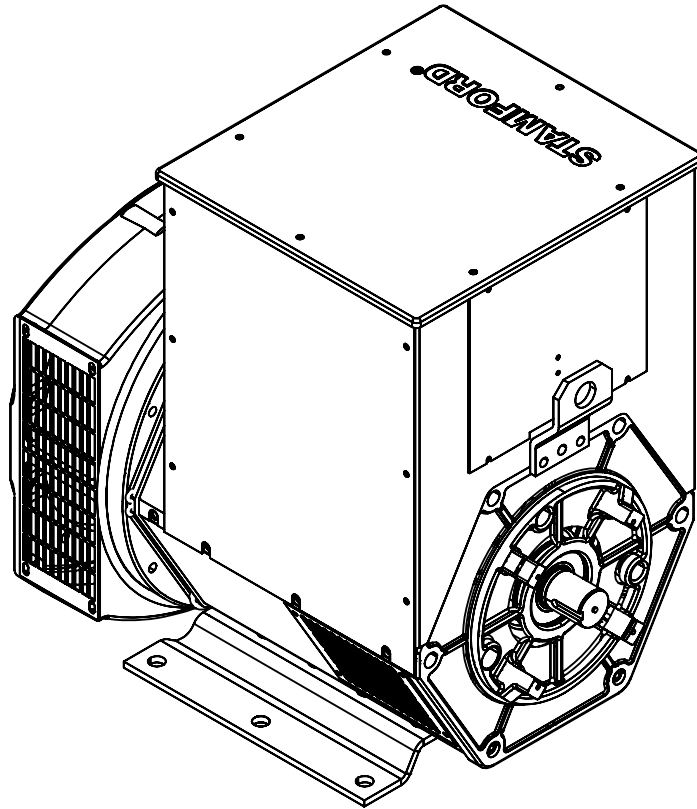
DSE 4510 MKII CONTROL PANEL BOM

ITEM NO.	PartNo	DESCRIPTION	QTY.
1	802044-023	4510 MKII CONTROL PANEL WITH SILK SCREEN	1
2	99783-001	SWITCH PUSH PULL	1
3	99783-002	EMERGENCY STOP SWITCH, 1NC CONTACT BLOCK	1
4	351112-30	DSE 4510 MKII CONTROLLER	1
5	64089-000	SPST, ROCKER SWITCH	1
6	2489-002	ATO-ATC FUSE HOLDER PANEL MOUNT	4
7	352108-006	2IN PANEL MOUNT PRESSURE GAUGE	1
8	352108-004	OIL TEMP SWITCH IAT-ROTARY	1
9	95064-110	10 AMP ATO-ATC FUSE	1
10	95064-102	2 AMP ATO-ATC FUSE	3
11	48602-003	TERMINAL FEMALE 16-14 AWG .250 TAB	8
12	48602-034	TERMINAL FEMALE .250 FOR SPADE FUSE HOLDERS	8
13	99783-004	SWITCH CONTACT	2
14	96925-006	16 PIN CONNECTOR	1
15	99555-001	ADAPTER STRAIN RELIEF	1
16	96924-001	TERMINAL, PIN, 18-16AWG	9
17	96924-101	PLUG TERMINAL	7
18	80623-005	TERMINAL BLOCK, 3PT, 20A	1
19	7614-000	RHMS 8-32 X .75	2
20	95985-000	#8-32 NYLOK HEX NUT	2
21	64599-000	TERMINAL BLOCK MARKER DECAL	1
22	22370-006	TERMINAL SPADE 16-14AWG #5-#6	2
23	22370-025	TERMINAL SPADE 22-18AWG #5-#6	1
24	300349-5	ADAPTER M14-1.5M X 1/8 27 NPT F	1
25	23885-000	ELBOW PIPE 1/8NPT 90	1
26	92386-002	PIPE NIPPLE 1/8 NPT X 1.5"	1
27	99267-003	OIL PRESSURE SENDER	1
28	300349-1	OIL DRAIN ADAPTER	1
29	99265-001	WATER TEMP SENDER 3/8"-18NPT	1
30	7547-000	TERMINAL RING 16/14AWG .375 STUD	4
31	22370-007	TERMINAL SPADE 16/14AWG #10STUD	4
32	58077-000	CLOSED CONNECTOR 16/14 AWG	1
33	80124-004	CURRENT TRANSFORMER 150:5	3
34	48602-004	TERMINAL MALE 16-14 AWG .250 TAB	4
35	802044-025	CONTROL PANEL GASKET	1
36	48602-011	MALE TERM. 1/4" TAB	2
37	91540-001	TERM RING 6 AWG .500 STUD	1
38	41316-000	TERMINAL, RING, 6AWG, 5/16 STUD	1

GENERATOR EXPLODED VIEW



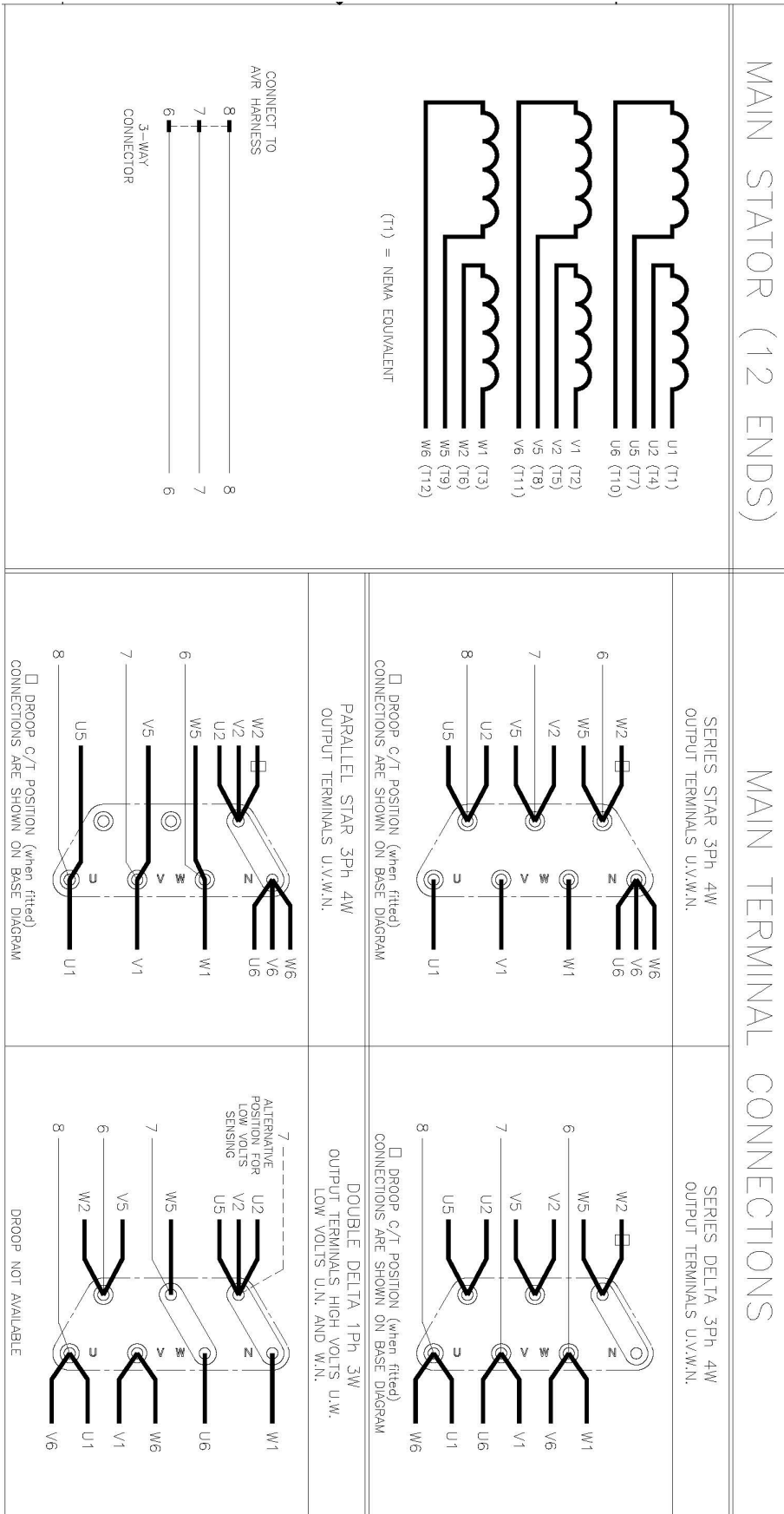
GENERATOR SPECS & PARTS LIST



UC224C EXPECTED RESISTANCE (Ω)			
ROTOR WDG	STATOR WDG	EXCITER ROTOR	EXCITOR STATOR
0.59 Ω	0.181 Ω	0.071 Ω /PHASE	21 Ω

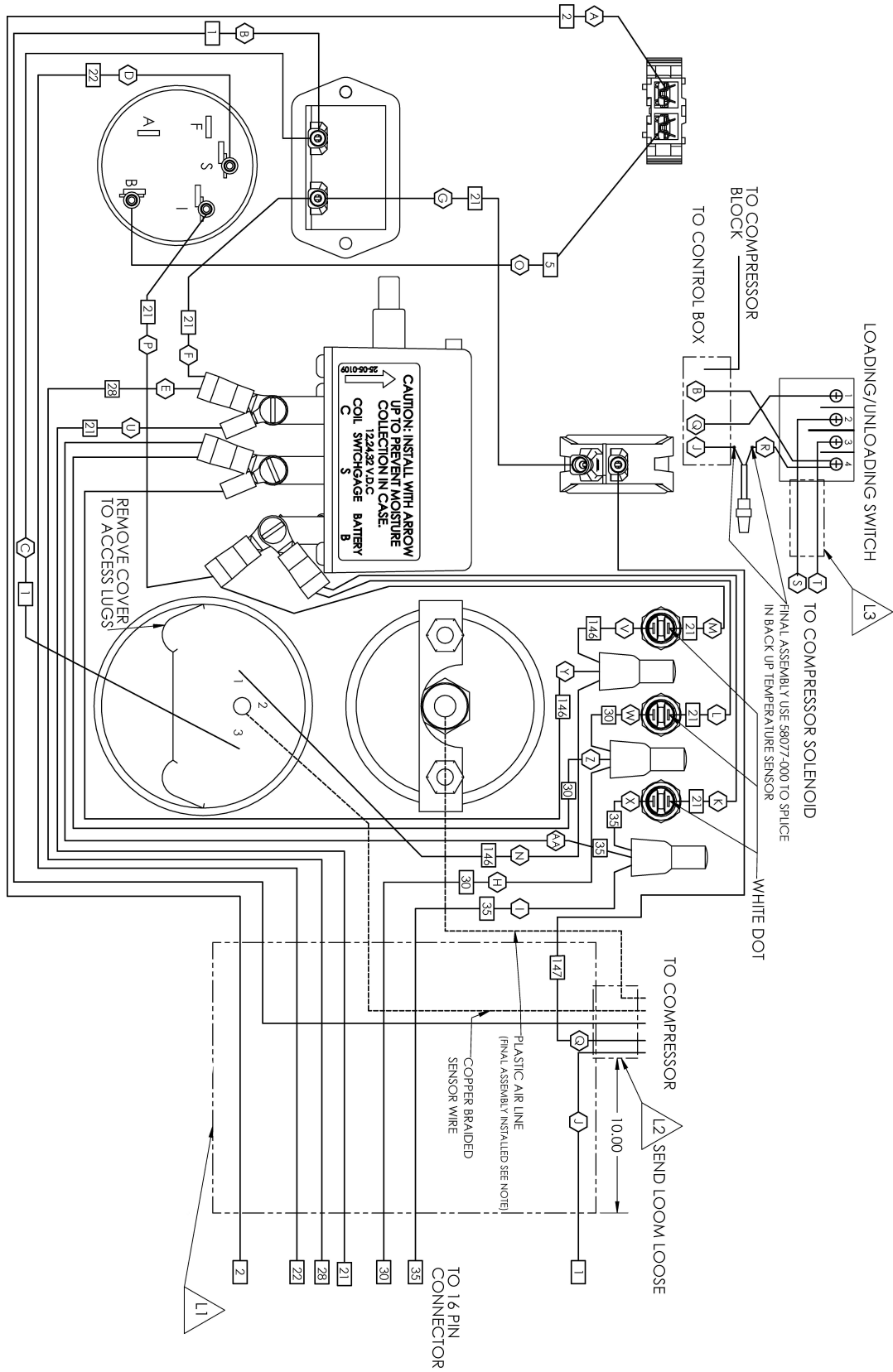
ITEM NO.	PART NUMBER	DESCRIPTION	QTY.
1	350818-7	AVR SX460-UL	1
2	350005-401	FUSE, FF6.3A, 500V	3
3	8-100	DIODE SET	1

GENERATOR WIRING

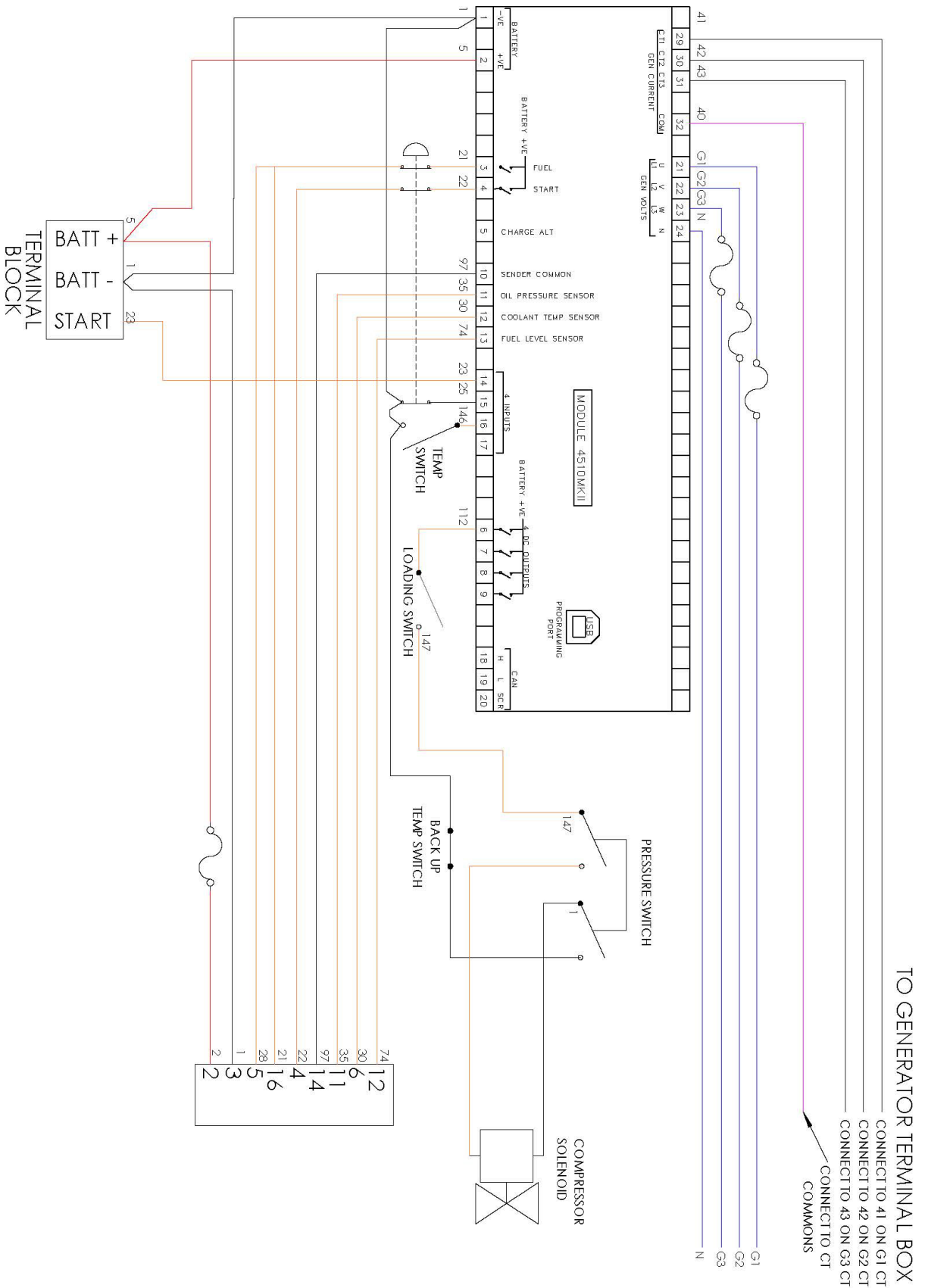


SCHEMATIC PER CUMMINS GENERATOR TECHNOLOGIES PRINT A040B092

KEY START CONTROL PANEL WIRING SCHEMATIC



DSE 4510 MKII CONTROL PANEL WIRING SCHEMATIC



ENGINE WIRING HARNESS

