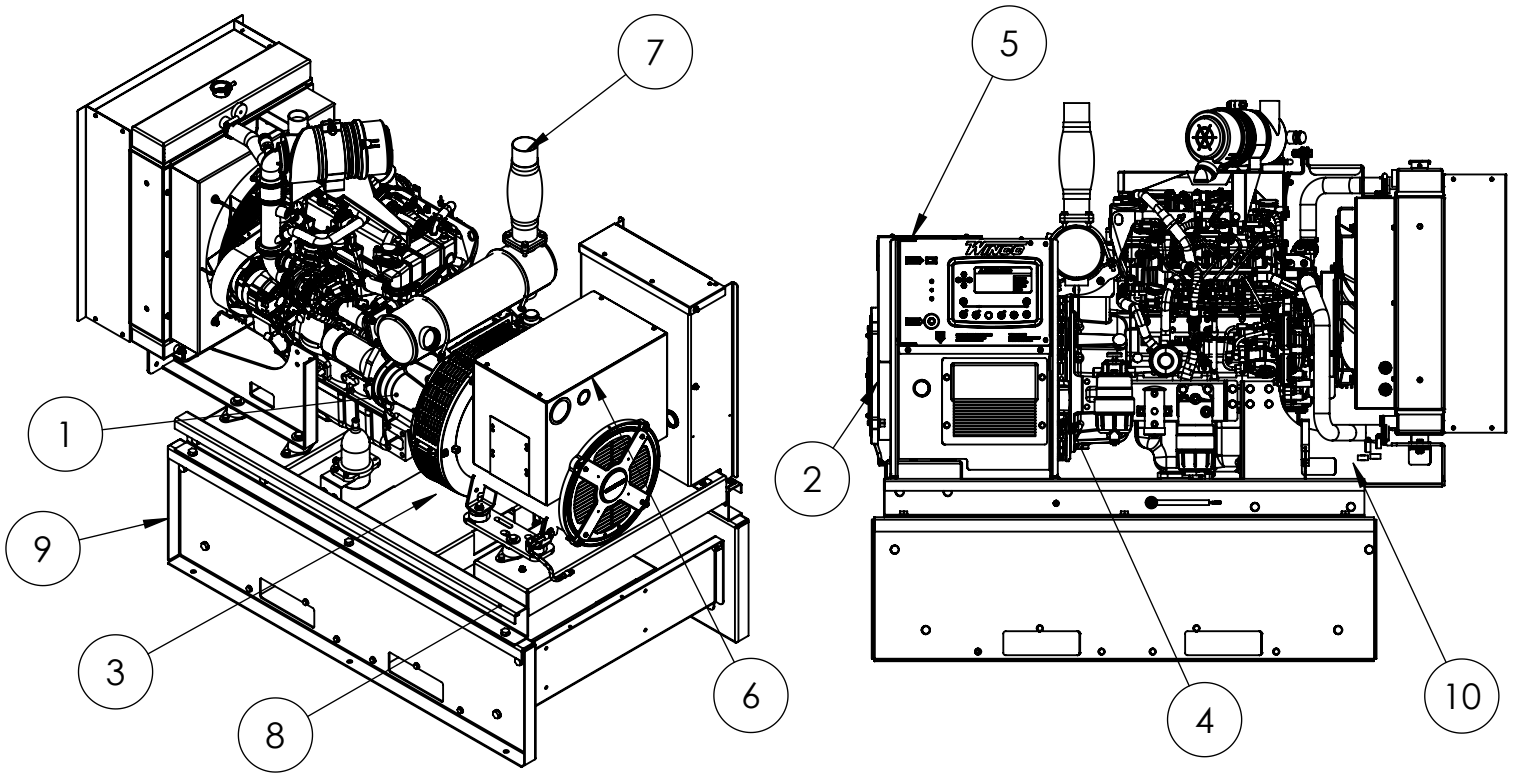


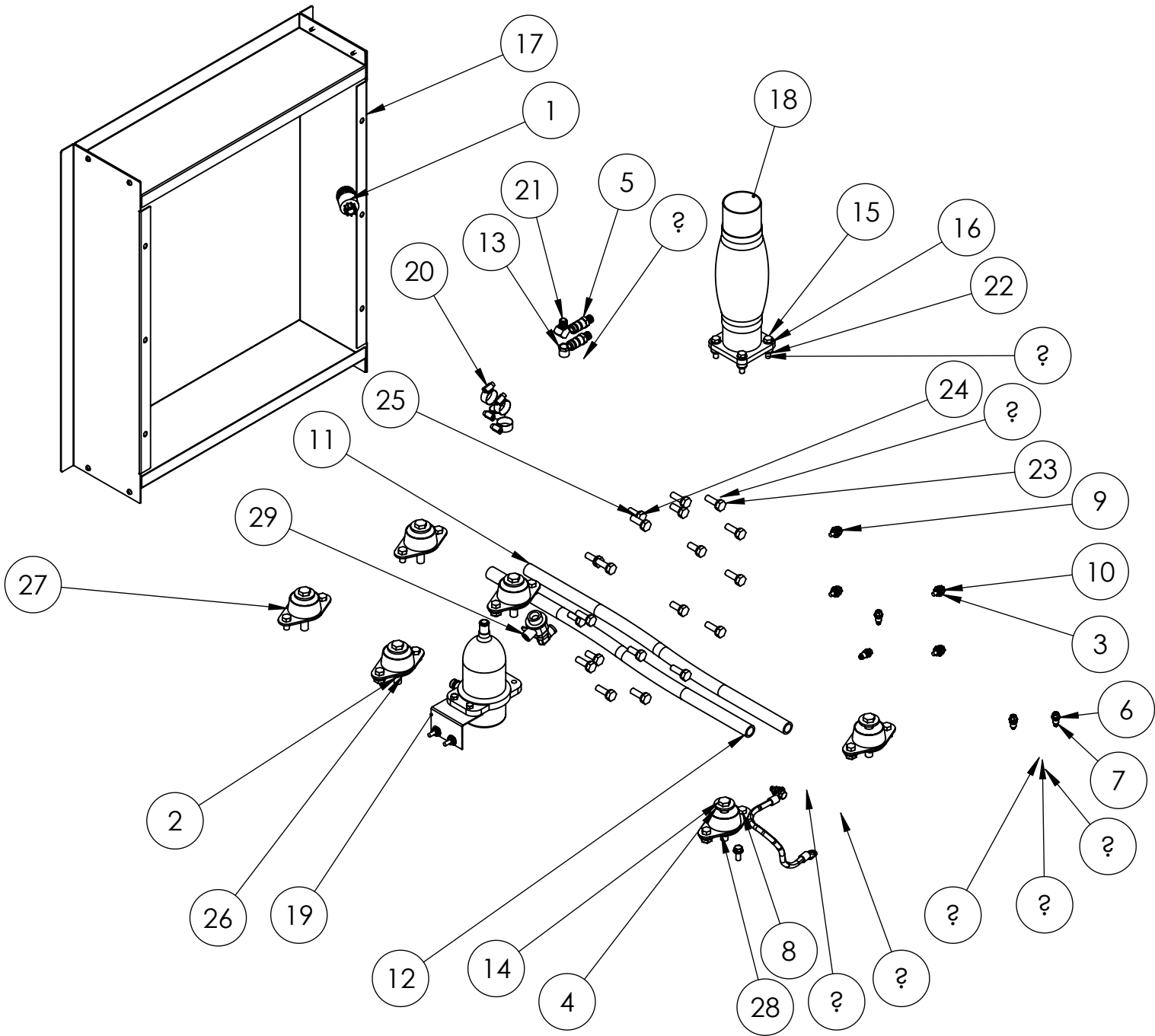
WINCO Service
Phone: 507-357-6831
Email: service@wincogen.com
www.wincogen.com

MODEL OVERVIEW



ITEM NO.	PART NUMBER	DESCRIPTION	
1	350001-104	ENGINE, ISUZU, TIER IV, MODEL 4LE2TAGV05	1
2	350023-6	GEN END, S1L2-J1, SAE#4/10", WDG#711, 12 LEAD	1
3	350041-118	FUEL TANK	1
4	352020-26	BATTERY CHARGER KIT, 12V	1
5	801025-004	CONTROL TOWER ASSY	1
6	801025-006	TERMINAL BOX ASSEMBLY	1
7	801025-016	DE23 HARDWARE KIT	1
8	801025-000	BASE ASSEMBLY	1
9	801044-000	TANK ASSEMBLY, 54 GAL	1
10	805050-000	BATTERY TRAY KIT	1
11	811023-001 DE23, DSE DISPLAY TO ECU WIRING HARNESS	DE23, DSE DISPLAY TO ECU WIRING HARNESS	1

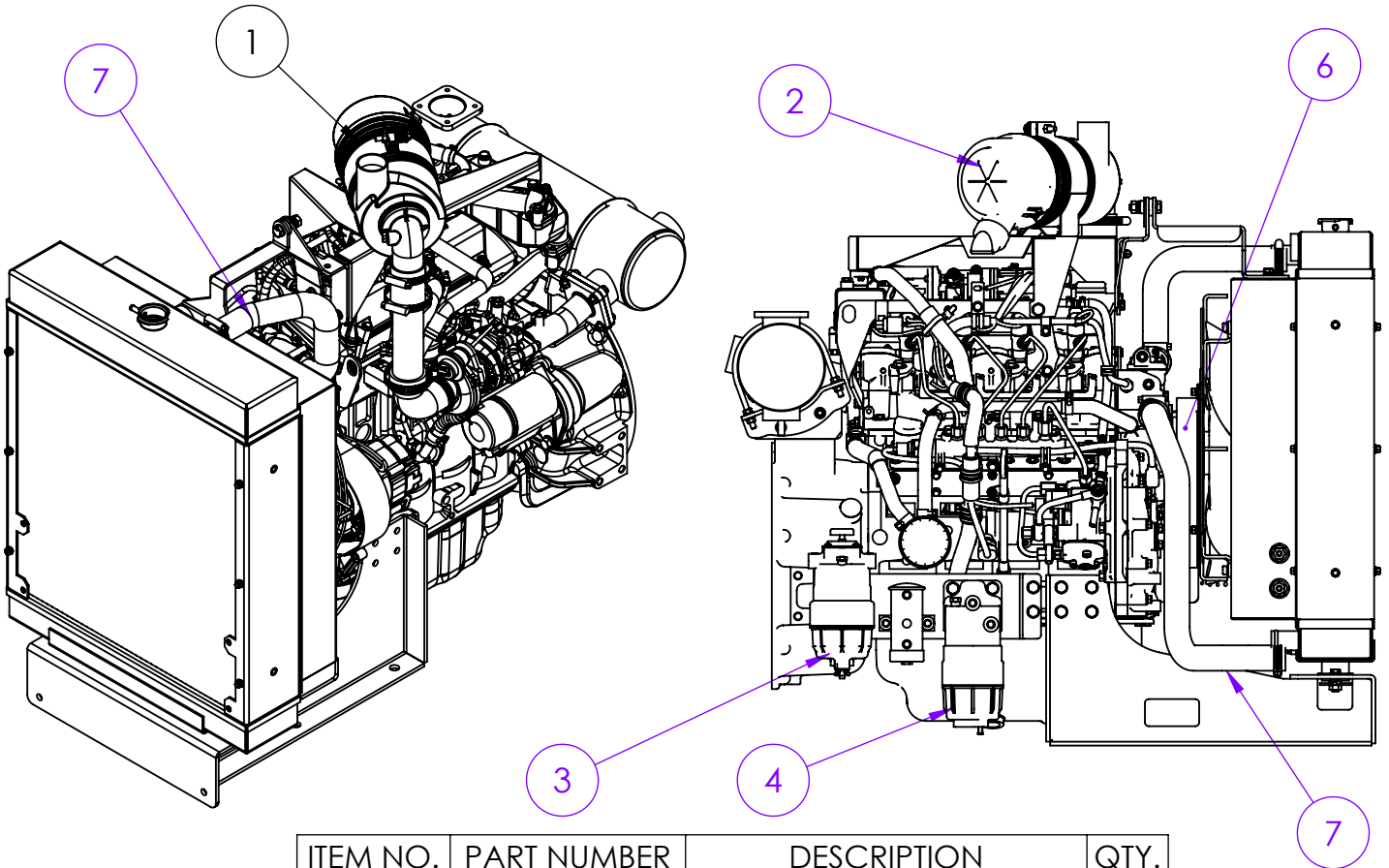
HARDWARE



HARDWARE

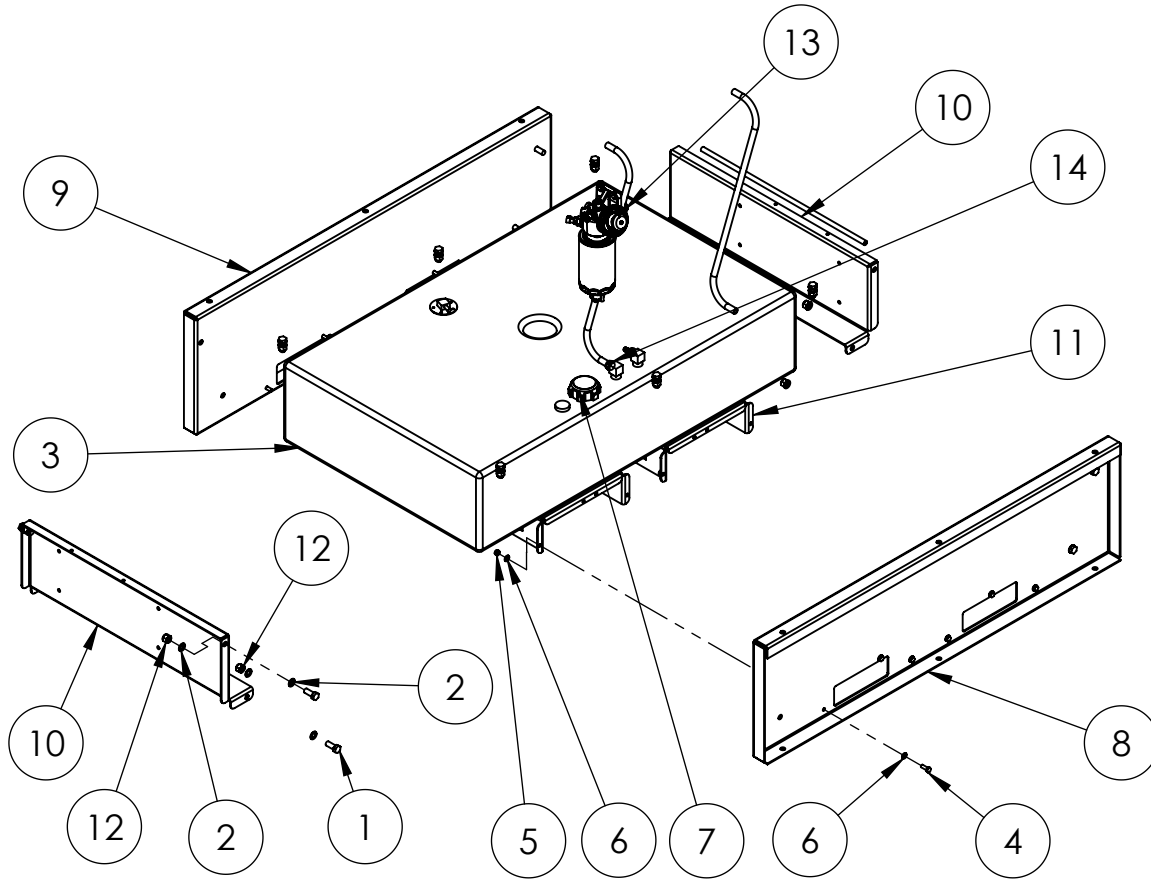
ITEM NO.	PART NUMBER	DESCRIPTION	QTY.
1	16043-002	VIRGIS AIR RESTRICTION INDICATOR	1
2	16248-001	.5-13 FLANGE NUT	4
3	16248-000	.25-20 FLANGE NUT	4
4	21867-002	WASHER .5 X 1.375 X .146	6
5	350341	HOSE FITTING 1/4 NPT (M) X 5/8 HOSE BARB	2
6	352120-2	1/4-20 X .75 FHCS	4
7	352125-1	1/4-20 RIVIT NUT 22 GA-10GA	4
8	464-000	.375-16X.75 HHB	12
9	466-000	.25-20X.75 HHB	4
10	512-000	.25 WASHER	4
11	56107-003	HOSE 24" LONG	1
12	56107-014	HOSE 15" LONG	1
13	56348-000	FITTING, REDUCER, 3/8 X 1/4	1
14	57580-007	HHCS .5-13 X 3	6
15	64908-001	HHCS M8-1.25X35MM 8.8GR ZINC	4
16	65005-001	5/16 WASHER SS	8
17	801025-010	RAD DUCTING ASSEMBLY	1
18	801025-013	EXHAUST, 2.5IN FLEX WITH FLANGE	1
19	80781-003	BLOCK HEATER WITH THERMOSTAT ASSY	1
20	81018-005	HOSE CLAMP 1.0625-.500	4
21	50785K82	ELBOW 1/4NPT 45 DEGREE	1
22	93341-008	LOCKWASHER M8	4
23	94282-035	M10-1.5X30MMM	12
24	96003-020	M10-1.5X20MM	8
25	97436-010	M10 LOCKWASHER	20
26	98806-002	WASHER SNUBBING 2.13 X .532 X .134THK	4
27	98807-003	SHOCKMOUNT RED/GOLD	4
28	98807-005	SHOCKMOUNT BLUE/GOLD	2
29	98906-021	OIL DRAIN VALVE M24-2.0 X5/8" 90	1
30	16250-000	.375-16 FLANGE NUT	8
31	526-000	WASHER .3125 ID	2
32	62173-001 (SELF TAP.SC..3125-18X.5)	SELF TAP.SC. 5/16-18X.75	1
33	16249-000	.3125-18 FLANGE	1
34	20039-000	LOCKWASHER 1/2 EXTERNAL TOOTH	1
35	1116-000	.3125-18X1 HHB	1
36	93542-018	LEAD WIRE ASSY	1

ENGINE PACKAGE



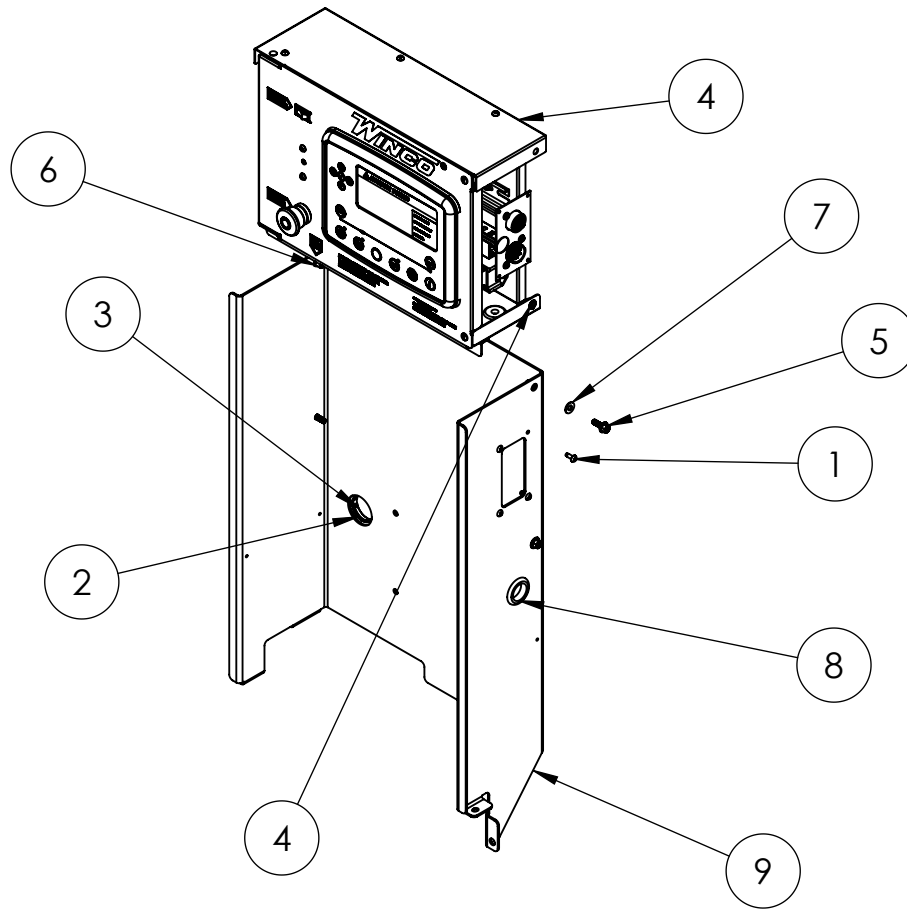
ITEM NO.	PART NUMBER	DESCRIPTION	QTY.
1	35001-104	ENGINE PACKAGE W/ AIR FILTER ASSEMBLY	1
2	7-106	AIR FILTER	1
3	7-112	SEDIMENT BOWL FUEL FILTER 1	1
4	7-113	SEDIMENT BOWL FUEL FILTER 2	1
5	7-100	OIL FILTER	1
6	7-115	FAN BELT	1
7	7-114	UPPER AND LOWER RADIATOR HOSES	1

BASE AND FUEL TANK ASSEMBLY



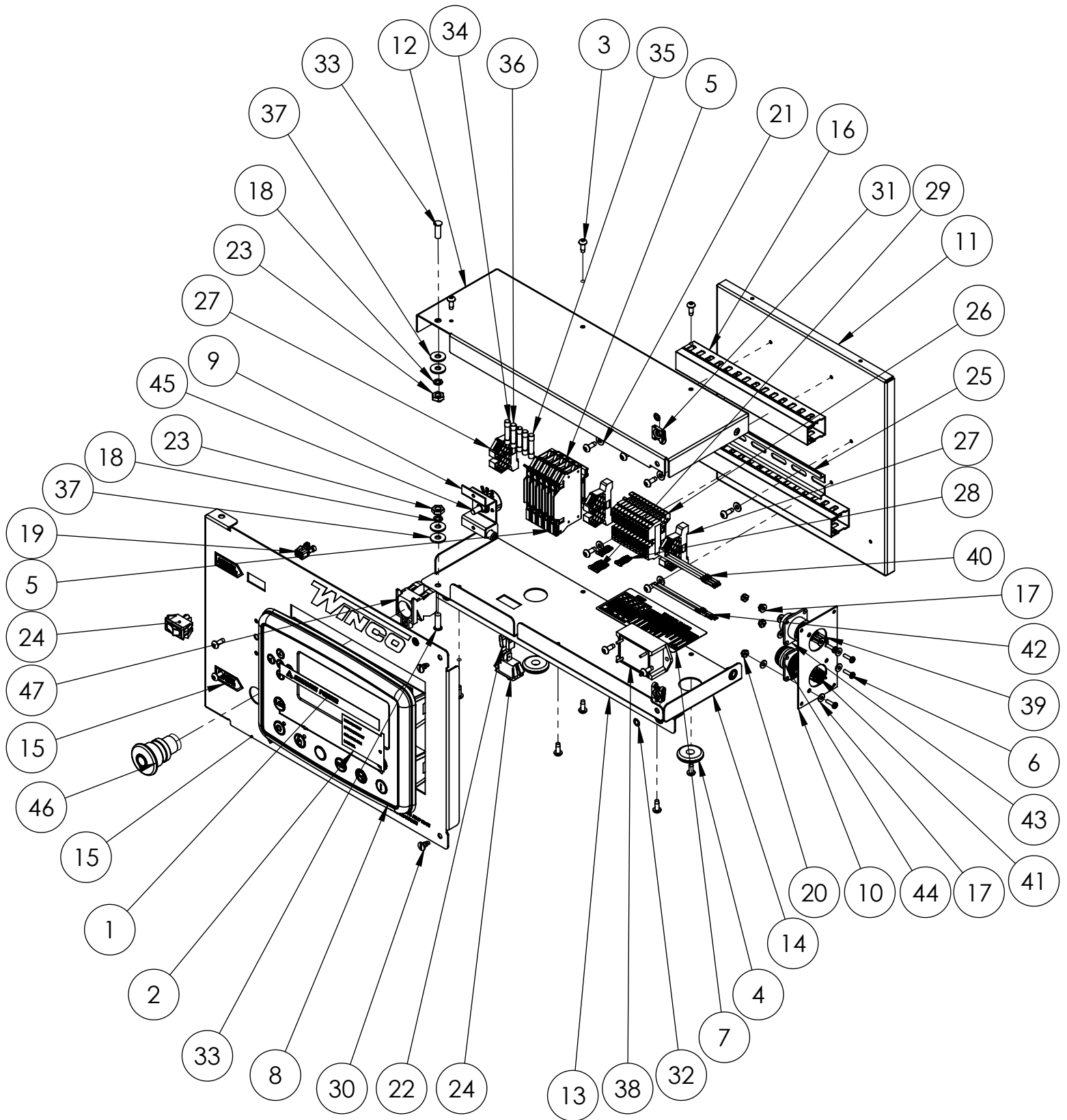
ITEM NO.	PART NUMBER	DESCRIPTION	QTY.
1	1516-000	.5-13X1.25 HHB	8
2	21867-000	FLAT WASHER .51 X .88 X .05	28
3	350041-118	FUEL TANK	1
4	465-000	.3125-18X.875 HHB	12
5	47136-000	HEX NUT .3125-18 NYLOK	12
6	526-000	WASHER .3125 ID	24
7	62398-000	FUEL CAP AND GAUGE, TWO WAY VENT, 10IN, DIESEL	1
8	801044-001	LEFT SIDE RAIL, BOTTOM FORK	1
9	801044-002	RIGHT SIDE RAIL, BOTTOM FORK	1
10	801044-006	BASE FRAME END CAP, BOTTOM FORK	2
11	801044-015	FUEL TANK SUPPORT	2
12	92242-000	NUT HEX .500-13 NYLOCK	14
13	93564-000	PIPE PLUG 3/4 SQUARE HEAD	1
14	94319-008	HOSE FIT. .500-14NPT X .375 HOSE BARB	2
16	98433-002	FUEL LEVEL SENDING UNIT KIT 9.5" 240-33 OHM	1
17	1516-000	.5-13X1.25 HHB	6
18	55505-003	HOSE 3/8 ID X 24" LONG	1

CONTROL TOWER ASSEMBLY



ITEM NO.	PART NUMBER	DESCRIPTION	QTY.
1	21698-001	TORX PAN HEAD SCREW #10	4
2	300527-6	DEUTSCH HDP30 LOCK WASHER	1
3	300527-7	DEUTSCH HDP30 JAM NUT	1
4	351891-51	ECU ENGINE CONTROLLER	1
5	352120-2	1/4-20 X .75 FHCS	4
6	352125-1	1/4-20 RIVIT NUT 22 GA-10GA	2
7	512-000	.25 WASHER	4
8	62486-000	GROMMET 1 X 1.375	1
9	801025-005	CONTROL PEDESTAL	1

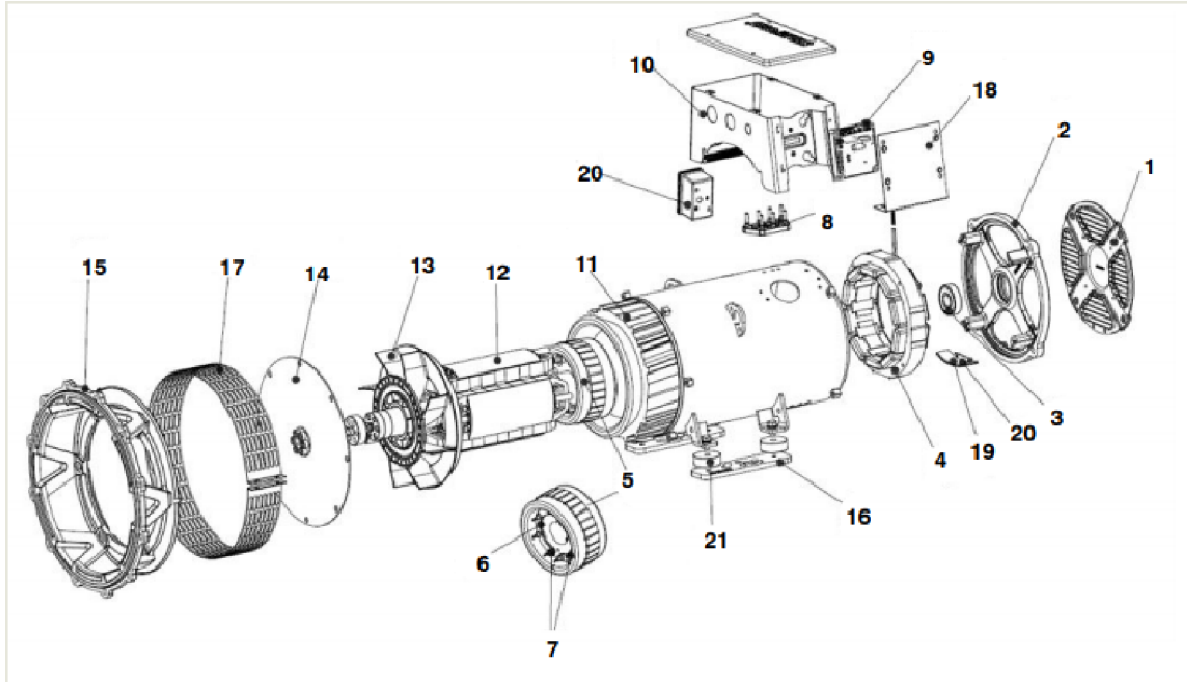
DSE 7310 MKII ENGINE CONTROL ASSEMBLY



DSE 7310 MKII ENGINE CONTROL ASSEMBLY CONT.

ITEM NO.	PART NUMBER	DESCRIPTION	QTY.
1	16600-005	DSE MKII ADVANCE POWER LOGO INSERT	1
2	16601-005	DSE 8610 MKII LIGHT LEGEND CARD INSERT	1
3	21698-001	TORX PAN HEAD SCREW #10	18
4	23917-002	GROMMET, .375ID X 1	2
5	2489-003	DIN RAIL FUSE HOLDER 1-1/4 X 1/4IN	5
6	24988-000	SCREW 6-32 X 1/2 BIND	4
7	351095-16	DECAL, FUSES AND TERMINAL BLOCKS	1
8	351112-29	DEEP SEA ELECTRONICS 7310 MKII	1
9	351900-36	RHEOSTAT MOUNTING BRACKET	1
10	351900-37	PLUG MOUNTING PLATE	1
11	351900-42	DIN RAIL MOUNTING PLATE	1
12	351900-43	DSE 8610 MKII CONTROL BOX TOP	1
13	351900-44	COVER SUPPORT BRACKET	1
14	351900-45	DSE8610 CONTROL BOX BOTTOM	1
15	351900-47	DSE 7310 MKII FRONT PANEL	1
16	352017-001	WIRE DUCT, 8.5IN	2
17	425-000	#6 FLATWASHER	8
18	479-000	LOCK WASHER, .25" SPLIT	2
19	48602-003	TERMINAL FEMALE 16-14 AWG .250 TAB	2
20	51802-000	NUT HEX #6-32 NYLOCK	4
21	598-000	#10 WASHER	6
22	61898-000	TERMINAL FLAG 16/14AWG .250	2
23	638-000	HEX NUT, .25IN	2
24	64089-000	SPST, ROCKER SWITCH	2
25	64551-005	DIN RAIL 9.5"	1
26	80623-009	TERMINAL BLOCK, DIN MOUNTED, SPRING CAGE	12
27	80623-010	END BLOCK, DIN MOUNTED	3
28	80623-011	2-POLE TERMINAL BLOCK JUMPER	2
29	80623-012	3-POLE TERMINAL BLOCK JUMPER	1
30	91682-001	STUD 1/4 TURN SLOTTED	2
31	91683-000	1/4 TURN CLIP NUT	2
32	91684-000	RETAINER RING 1/4 TURN SPLIT RING	2
33	94980-003	THREAD STUD .25-20 X .750	2
34	95064-006	FUSE AGC 10 AMP	1
35	95064-008	FUSE AGC 2 AMP	3
36	95064-000	FUSE AGC 3 AMP	1
37	96286-001	1/4" NYLON WASHER	4
38	96333-001	LOW COOLANT MODULE	1
39	96923-001	TERMINAL, SOCKET, 18-16AWG	10
40	96923-101	PLUG TERMINAL	4
41	96924-001	TERMINAL, PIN, 18-16AWG	13
42	96924-101	PLUG TERMINAL	3
43	96925-002	14 PIN CONNECTOR	1
44	96925-006	16 PIN CONNECTOR	1
45	97517-001	REOSTAT	1
46	99783-001	SWITCH, PUSH-PULL	1
47	99783-002	SWITCH CONTACT	1

GENERATOR EXPLODED VIEW



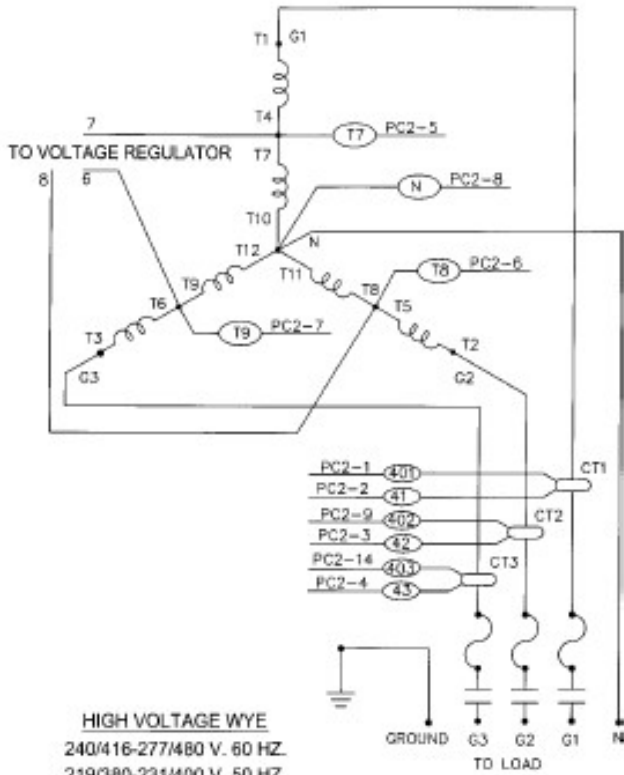
EXPECTED RESISTANCE (Ω) @ 22C	
MODEL	S1L2-J1 711
STATOR WINDING (PER PHASE SERIES CONNECTED)	0.203
ROTOR WINDING	0.925
EXCITER STATOR	16.44
EXCITER ROTOR (PER PHASE)	0.207
POSITIVE SEQUENCE (R1)	0.254
NEGATIVE SEQUENCE (R2)	0.292
ZERO SEQUENCE (R0)	0.254
AUX. WINDING	4.24

ITEM	DESCRIPTION	DE23
-	COMPLETE GENERATOR END	350023-6
-	STAMFORD MODEL	S1L2-J1
-	WINDING	711
24	AVR AS540	8-101

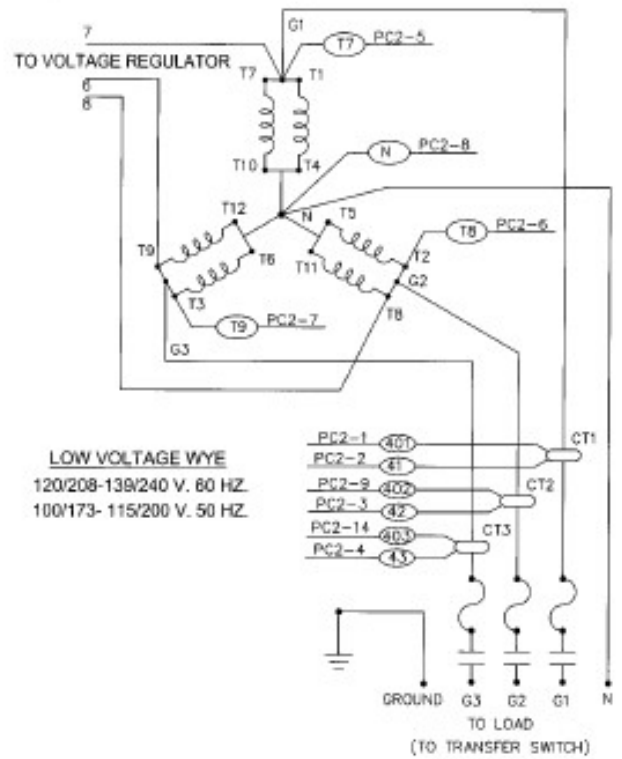
For additional parts support, contact WINCO service

GENERATOR WIRING

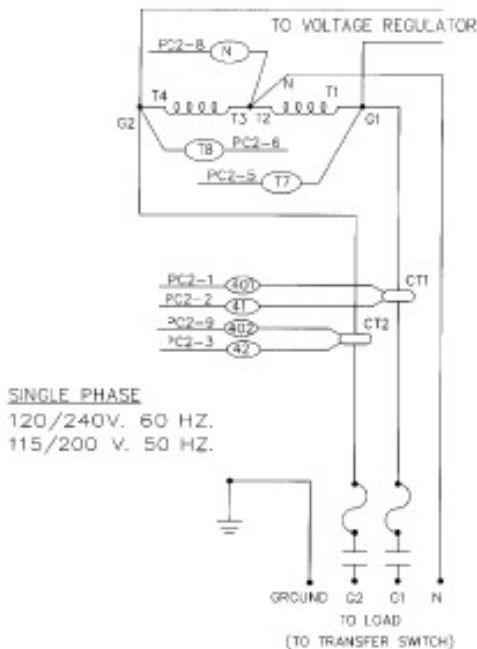
THREE PHASE - HIGH WYE 277/480V



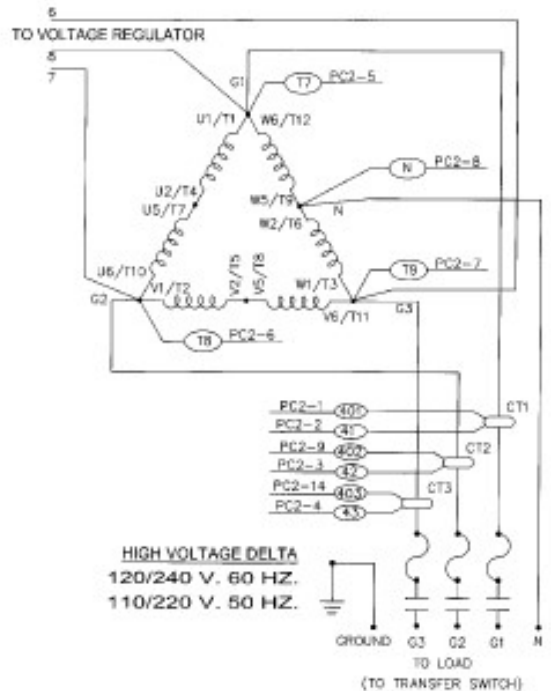
THREE PHASE - LOW WYE 120/208V



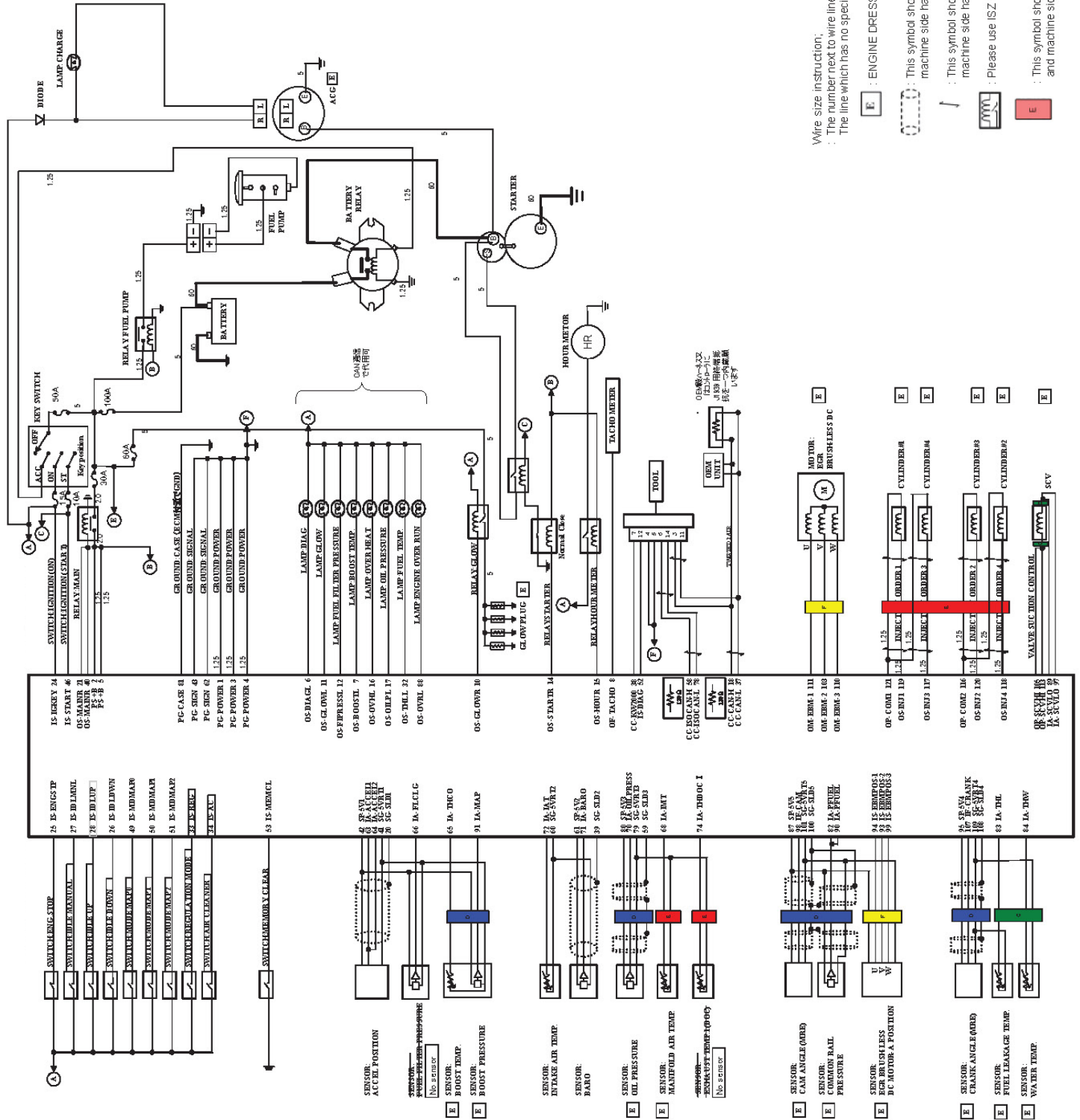
SINGLE PHASE 120/240V



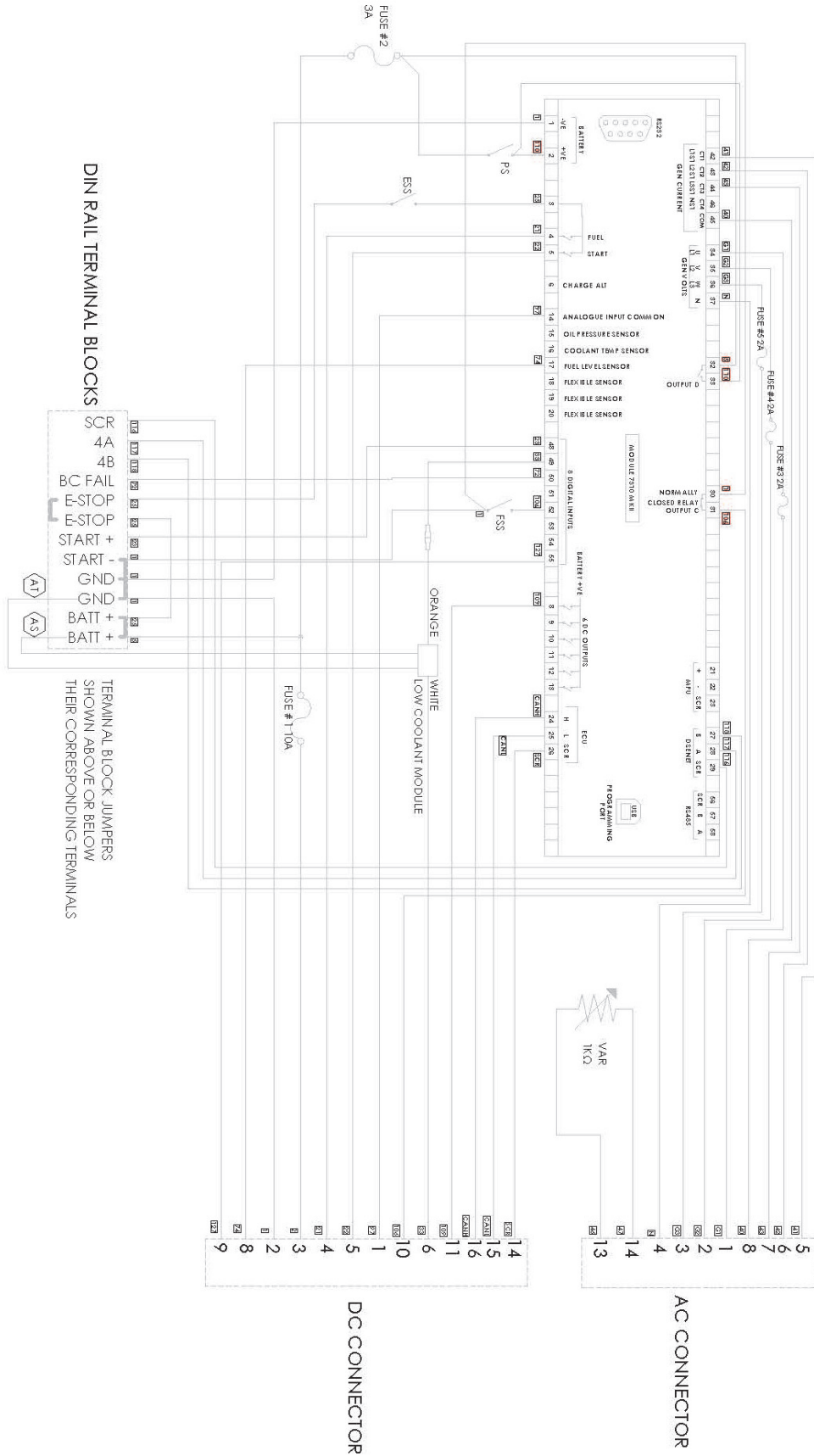
THREE PHASE DELTA 120/240V



ECM DIAGRAM



SCHEMATIC



DIN RAIL TERMINAL BLOCKS

TERMINAL BLOCK JUMPERS SHOWN ABOVE OR BELOW THEIR CORRESPONDING TERMINALS