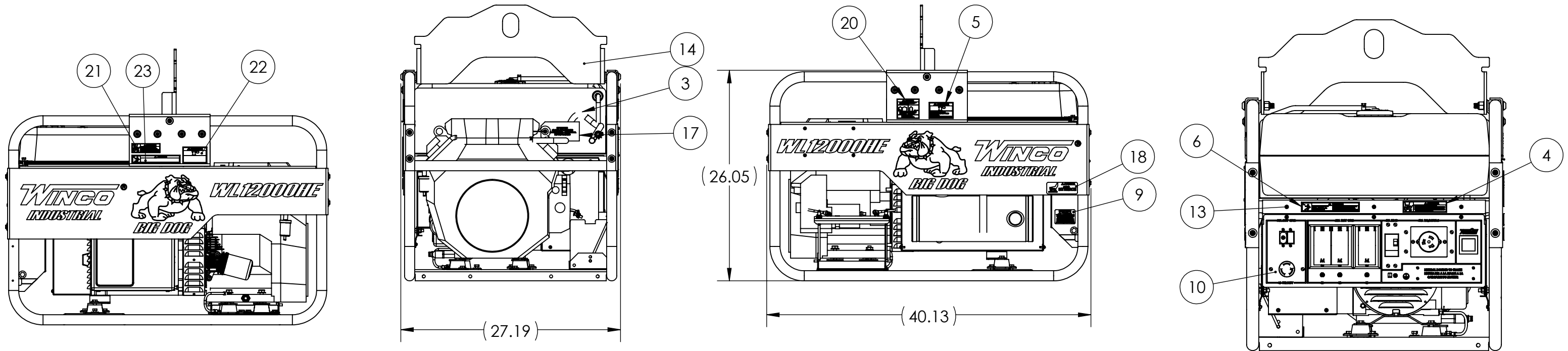
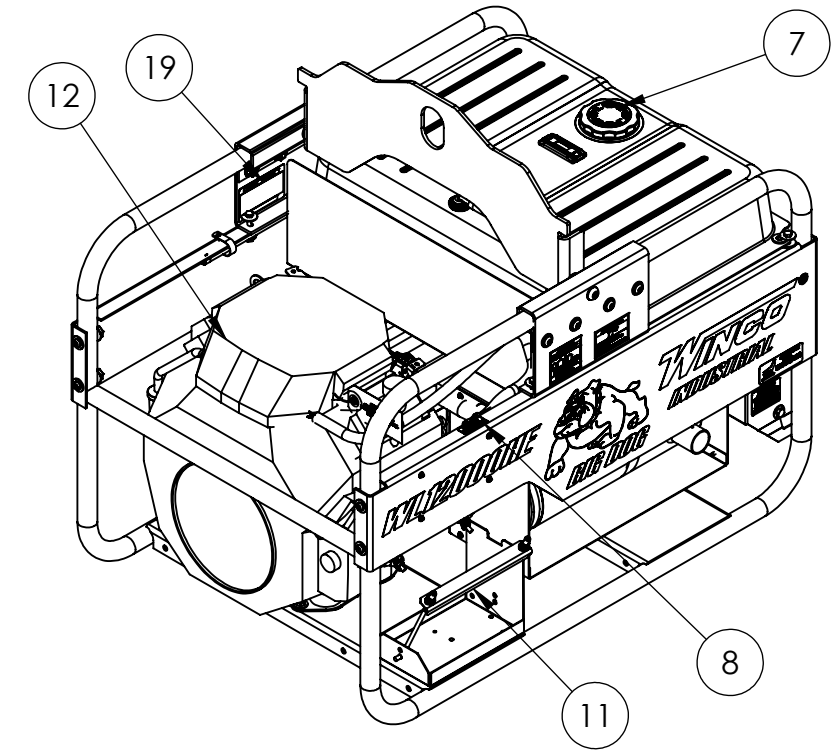


24012-012

ITEM NO.	PART NUMBER	DESCRIPTION	QTY.
1	100047-742	CARTON	1
2	100114-705	PALLET	1
3	15163-070	FUEL TANK INSTALLATION	1
4	15209-001	GASOLINE DECAL	1
5	15209-002	DECAL-DANGER CARBON MONOXIDE	1
6	15209-003	UL-DECAL ELECTRICAL SHOCK CAN KILL	1
7	15209-013	DECAL - FUEL TYPE GASOLINE	1
8	15209-014	DECAL - CHECK OIL	1
9	15209-036	PROP 65 WARNING DECAL	1
10	15457-083	RECEPTACLE ASSEMBLY	1
11	16175-022	BATTERY INSTALLATION	1
12	18000-000	ENGINE GENERATOR AND CRADLE	1
13	21698-001	TORX PAN HEAD SCREW #10	5
14	300144-14	LIFTING EYE ASSEMBLY	1
15	300515-2	10W-30 OIL	1.5 QTS
16	OPM-139	OPERATION MANUAL	1
17	60710-018	OIL WARNING TAG	1
18	63941-001	DECAL -HOT SURFACES	1
19	63966-004	NAMEPLATE, WINCO PORTABLE	1
20	64918-000	DECAL-DANGER (CO) USE OUTSIDE	1
21	15209-101	DECAL, GASOLINE DANGER, FRENCH	1
22	15209-102	DECAL-DANGER CARBON MONOXIDE	1
23	15209-103	UL-DECAL ELECTRICAL SHOCK CAN KILL	1

REVISIONS					
REV.	IRN	DESCRIPTION	DATE	BY	APP'D
A	P281	ORIGINAL	7/12/2018	SJM	DRD
B	9999	ADDED FRENCH DECALS	6/27/2019	SJM	DRD



NOTES:

- DECALS 15209-001, 15209-002, & 15209-003 ARE PART OF DECAL SET 15209-000.
- APPROXIMATE WEIGHT: 420 LBS.

<p>THIS DRAWING CONTAINS PROPRIETARY INFORMATION BELONGING TO WINCO. UNAUTHORIZED USE IS PROHIBITED.</p> <p>ALL DIMENSIONS INCH</p>	DRAWN BY	DATE	CHK'D BY	DATE	ENG APPR.	DATE
	SJM	7/12/2018			DRD	9/6/18
	TOLERANCE:	+/- 0.0625 DECIMAL		TITLE: WL12000HE COMPLETE ASSEMBLY		
	MODEL:	WL12000		PART: 24012-012		

