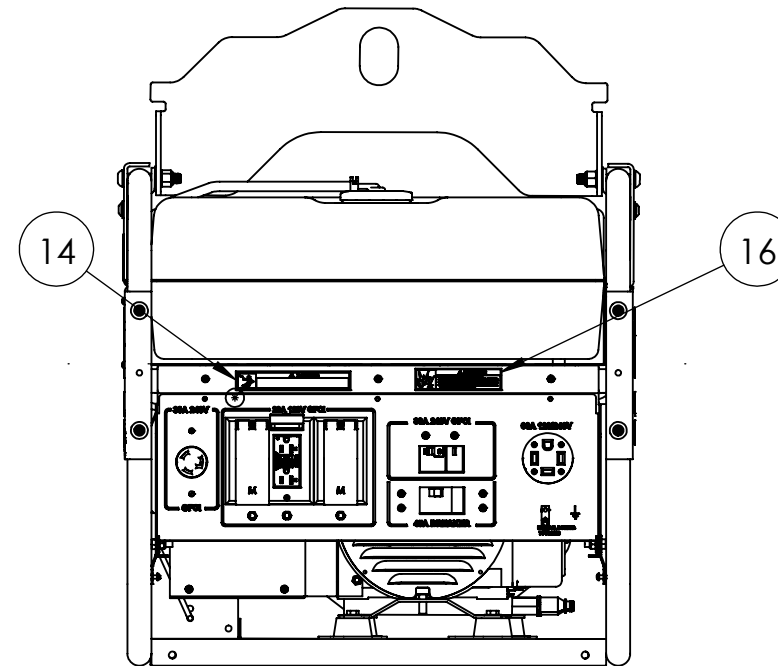
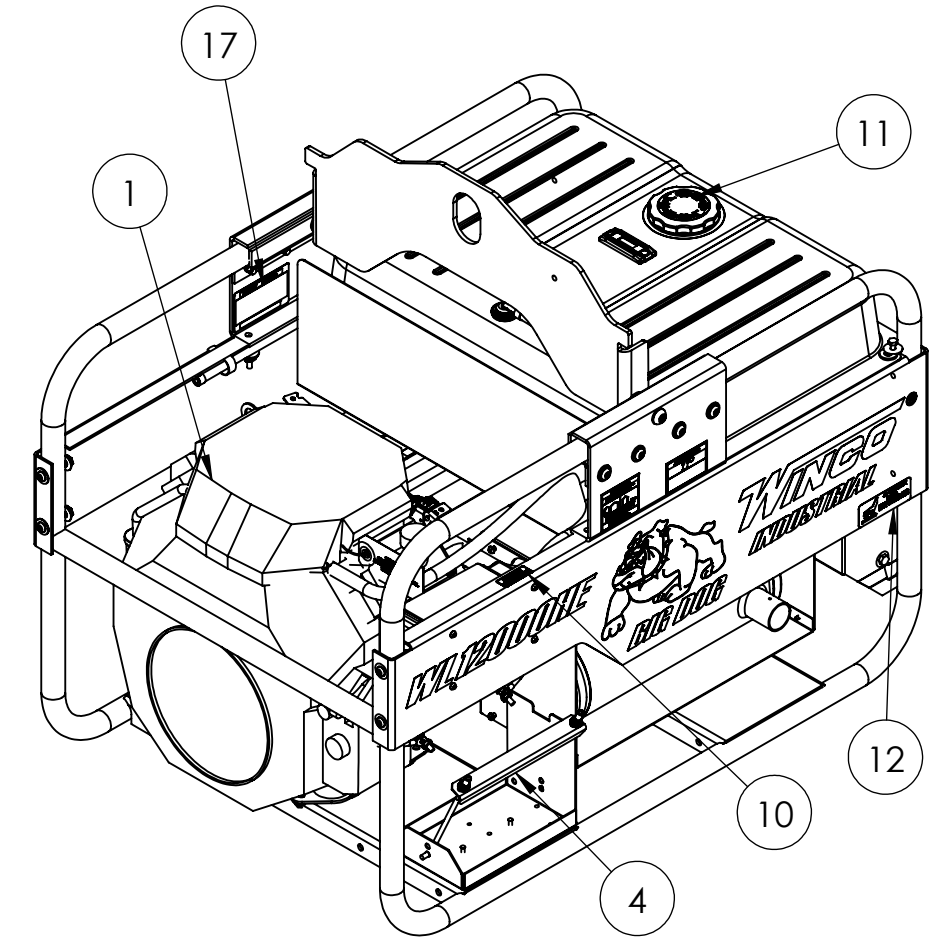
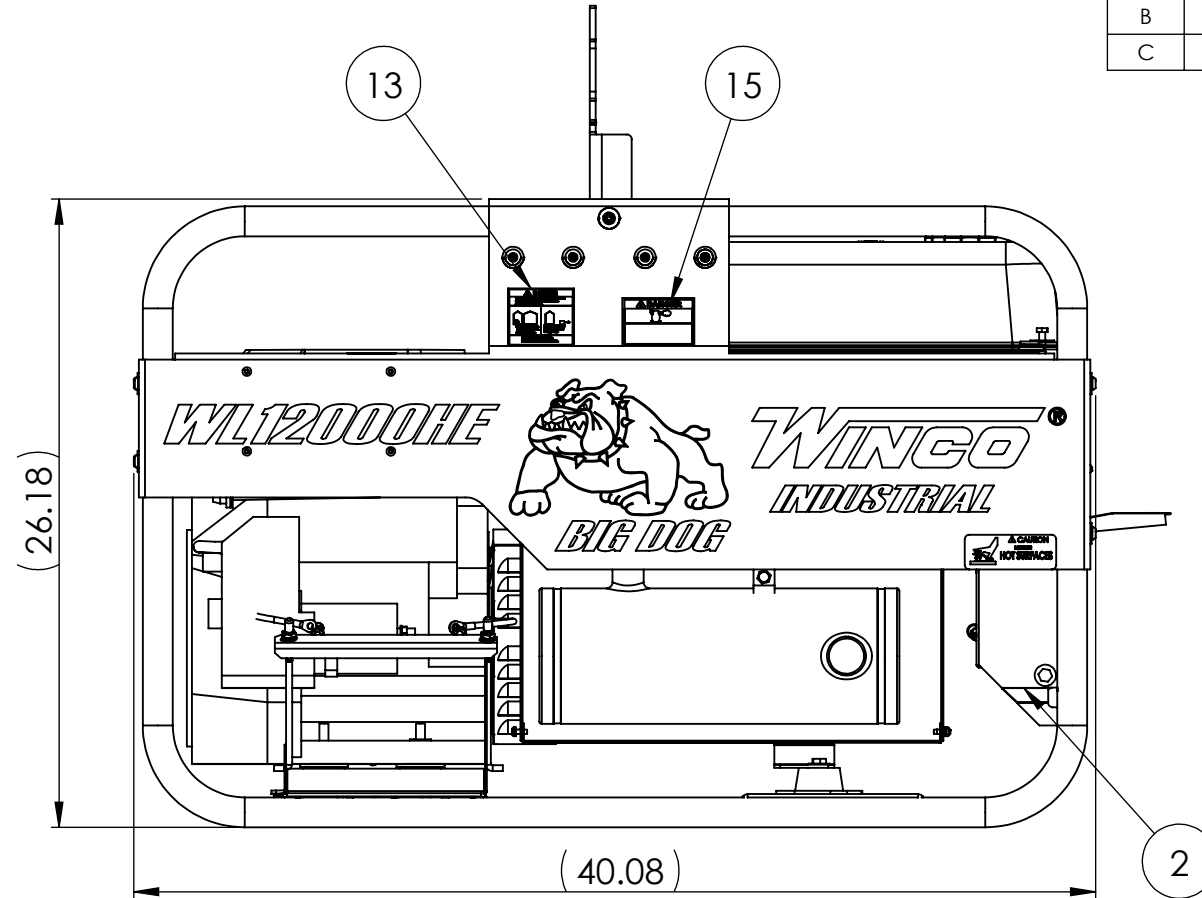
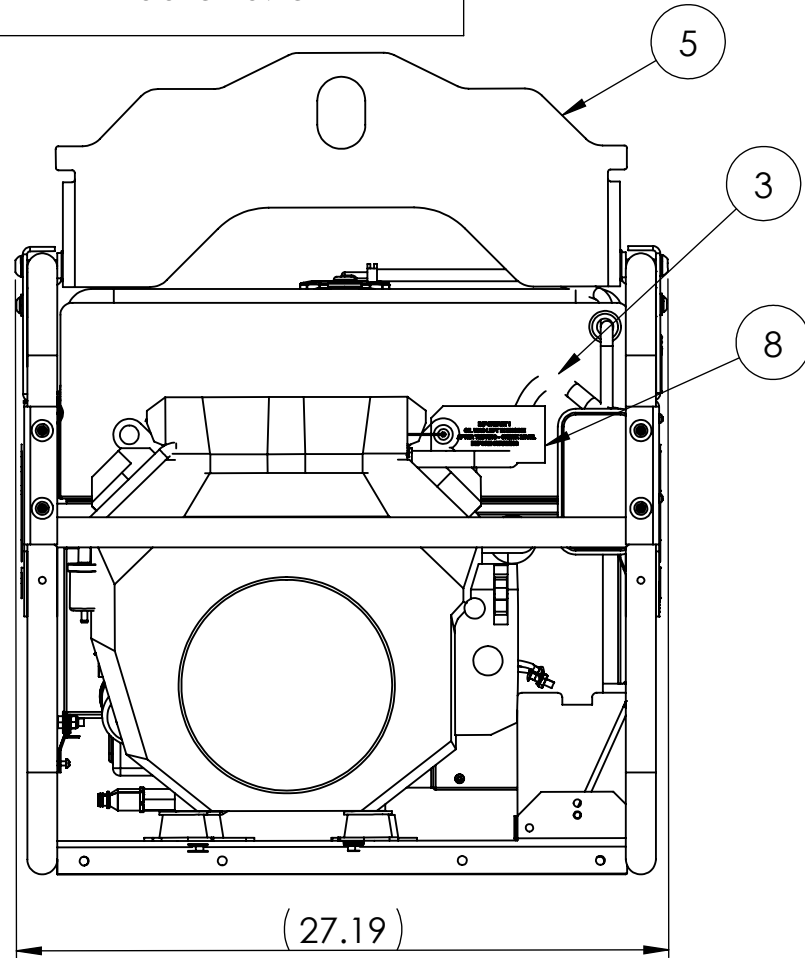


24012-005

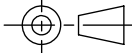


REVISIONS					
REV.	IRN	DESCRIPTION	DATE	BY	APP'D
A	2883	LIFTING EYE ASSEMBLY WAS 300144-11	6/30/2014	KS	DRC
B	5016	ADD OIL & BREAK UP DECAL KIT	3/15/2016	ZJF	ZJF
C	C3636	UPDATED OVERALL DIMENSIONS	5/3/2016	RJD	ZJF

ITEM NO.	PART NUMBER	DESCRIPTION	QTY.
1	18000-000	ENGINE GENERATOR AND CRADLE	1
2	16176-044	RECEPTACLE BOX INSTALLATION	1
3	15163-070	FUEL TANK INSTALLATION	1
4	16175-022	BATTERY INSTALLATION	1
5	300144-14	LIFTING EYE ASSEMBLY	1
6	100047-742	CARTON	1
7	60706-233	OPERATION MANUAL	1
8	60710-018	OIL WARNING TAG	1
9	300515-2	10W-30 OIL	1.5 QTS
10	15209-014	DECAL - CHECK OIL	1
11	15209-013	DECAL - FUEL TYPE GASOLINE	1
12	63941-001	DECAL -HOT SURFACES	1
13	64918-000	DECAL-DANGER (CO) USE OUTSIDE	1
14	15209-003	UL-DECAL ELECTRICAL SHOCK CAN KILL	1
15	15209-002	DECAL-DANGER CARBON MONOXIDE	1
16	15209-001	GASOLINE DECAL	1
17	63966-004	NAMEPLATE, WINCO PORTABLE	1

NOTES:

- DECALS 15209-001, 15209-002, & 15209-003 ARE PART OF DECAL SET 15209-000.
- APPROXIMATE WEIGHT: 420 LBS.

 THIS DRAWING CONTAINS PROPRIETARY INFORMATION BELONGING TO WINCO. UNAUTHORIZED USE IS PROHIBITED. ALL DIMENSIONS INCH	DRAWN BY	DATE	CHK'D BY	DATE	ENG APPR.	DATE
	KS	6/30/2014				
	TOLERANCE:	+/- 0.0625 DECIMAL		TITLE: WL12000HE COMPLETE ASSEMBLY		
	MODEL:	WL12000		PART: 24012-005		