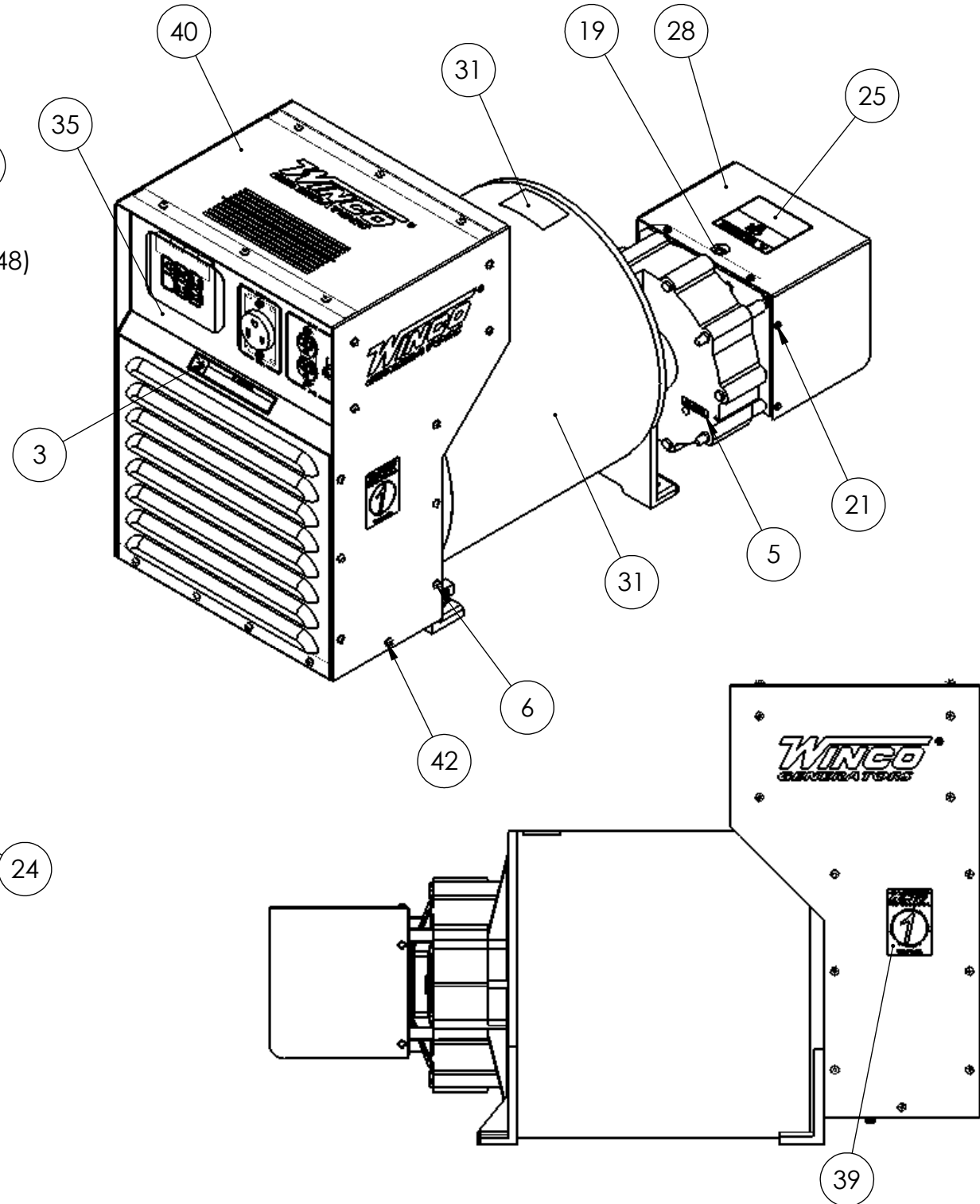
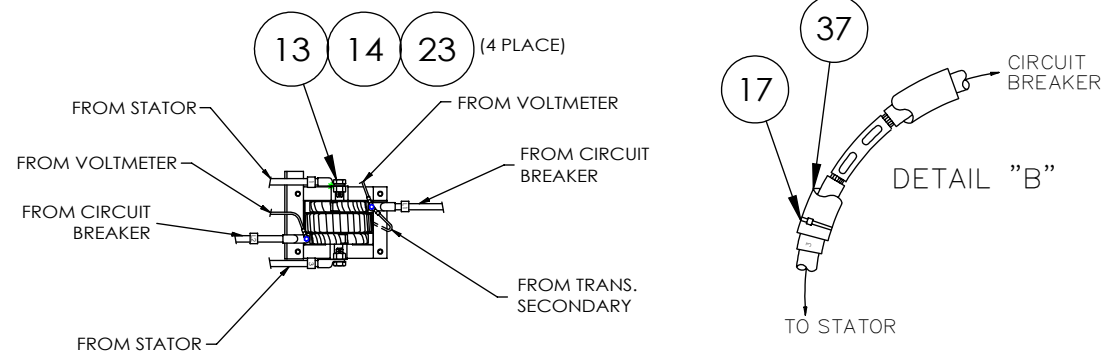
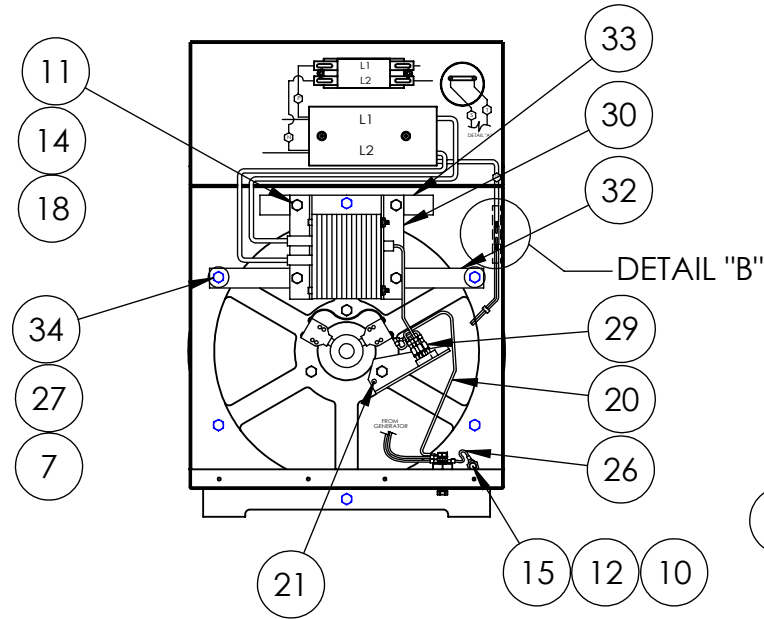
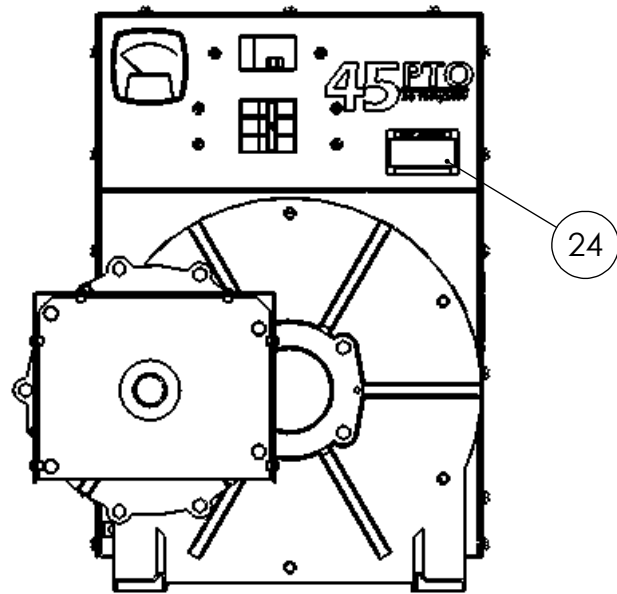


91276-056



SEE CONNECTION BOX ASSEMBLY (91258-048) PRINT FOR ADDITIONAL WIRING DETAILS



REVISIONS					
REV.	IRN	DESCRIPTION	DATE	BY	APP'D
1	----	ORIGINAL	12/2/2010	RLC	
2	1616	RESTRUCTURED BOM	6/27/2012	MVW	
3	RS2-11	ADDED 91174-002 IN BOM	2/14/2014	RS	DRC
4	4371	MOVED LOCATION OF 63966-007	10/13/2015	SJM	DRC

ITEM NO.	PartNo	DESCRIPTION	QTY.
1	100046-504	43.50 X 27.375 X 26 CARTON	1
2	100047-122	CARTON 8 X 8 X 4	1
3	15209-003	UL-DECAL ELECTRICAL SHOCK CAN KILL	1
4	15750-001	GROUND DECAL	1
5	16303-000	DECAL- OIL LEVEL	1
6	21698-001	10-16 X .375 TORX SCREW	32
7	21867-000	FLAT WSH 9/16X1.25 5/64 YELLOW	2
8	240015009	LOCKWASHER 5/16" INTERNAL TOOTH	1
9	44791-000	TERMINAL, CLOSED CONNECTOR, 16	2
10	458-000	NUT HEX 5/16-18	1
11	463-000	HHCS 1/4-20X1/2 GR5	4
12	468-000	.3125-18X1.5 HHCS	1
13	476-000	HHCS 1/4-20X5/8 GR2 ZINC	4
14	479-000	LOCK .25 SPLIT	8
15	480-000	LOCKWASHER 5/16 SPLIT ZINC	1
16	48043-000	TERMINAL GROUND	1
17	49975-010	CABLE-TIE 4IN. BLACK, 18# PULL	2
18	512-000	FLAT WSH 1/4 9/32ID X 5/8OD X 1/16	4
19	52077-000	DECAL-CAUTION OIL LEVEL	1
20	52126-082	LWA 12 GA WHITE	1
21	53644-000	10-24 X 3/8 SELF TAPPING	7
22	60706-198	OPR.MANUAL 35-75PTO (16)	1
23	638-000	NUT HEX 1/4-20	4
24	63966-007	KIT, NAMEPLATE WINCO PTO	1
25	64515-000	DECAL- WARNING PTO	1
26	81582-015	LWA 2 GA BLACK	1
27	90570-000	LOCKWASHER 7/16 SPLIT	6
28	91171-000	SHIELD	1
29	91178-000	BRACKET ASSY	1
30	91178-003	TRANSFORMER ASY.	1
31	91232-002	GEN & GEAR CASE ASSY	1
32	91242-000	STRAP	1
33	91243-000	STRAP	1
34	91256-000	HHCS 7/16-14X1.75 GR2	6
35	91258-048	CONNECITON BOX ASSY	1
36	91369-000	DECAL- 540 RPM	1
37	91443-007	SLEEVING, 3/4", GD A, ACRYLIC	1
38	91861-002	PLUG KIT, 40PTO/45PTO, 3PH	1
39	98479-000	WINCO #1 WORLDWIDE DECAL	2
40	91174-002	COVER	1
41	100054-652	BAG 21 X 14.5 X 20 2 MIL.	1
42	96286-002	FLAT WASHER NYLON	32

<p>THIS DRAWING CONTAINS PROPRIETARY INFORMATION BELONGING TO WINCO. UNAUTHORIZED USE IS PROHIBITED.</p> <p>ALL DIMESNIONS INCH</p>	DRAWN BY	DATE	CHK'D BY	DATE	ENG APPR.	DATE
	MVW	6/25/2012				
	TOLERANCE:	+/- 0.0625 DECIMAL		TITLE:		
	MODEL:	+/- 1 DEG ANGULAR		45PTOC-17/E 540RPM		
	WINCO®		PART: 91276-056			