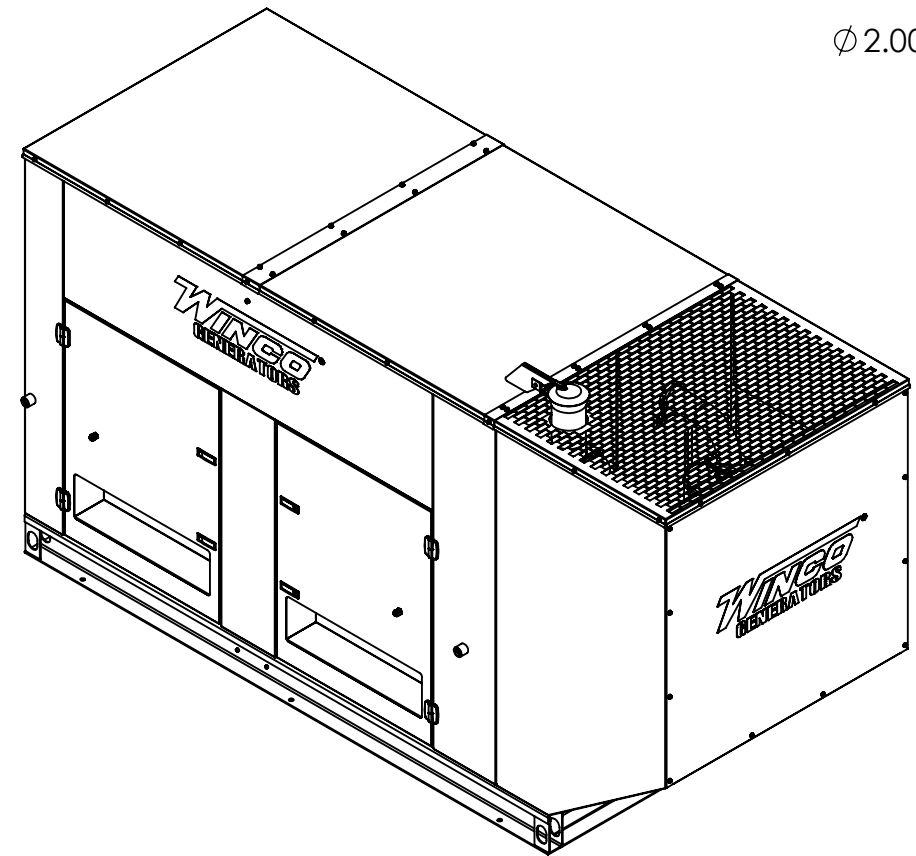
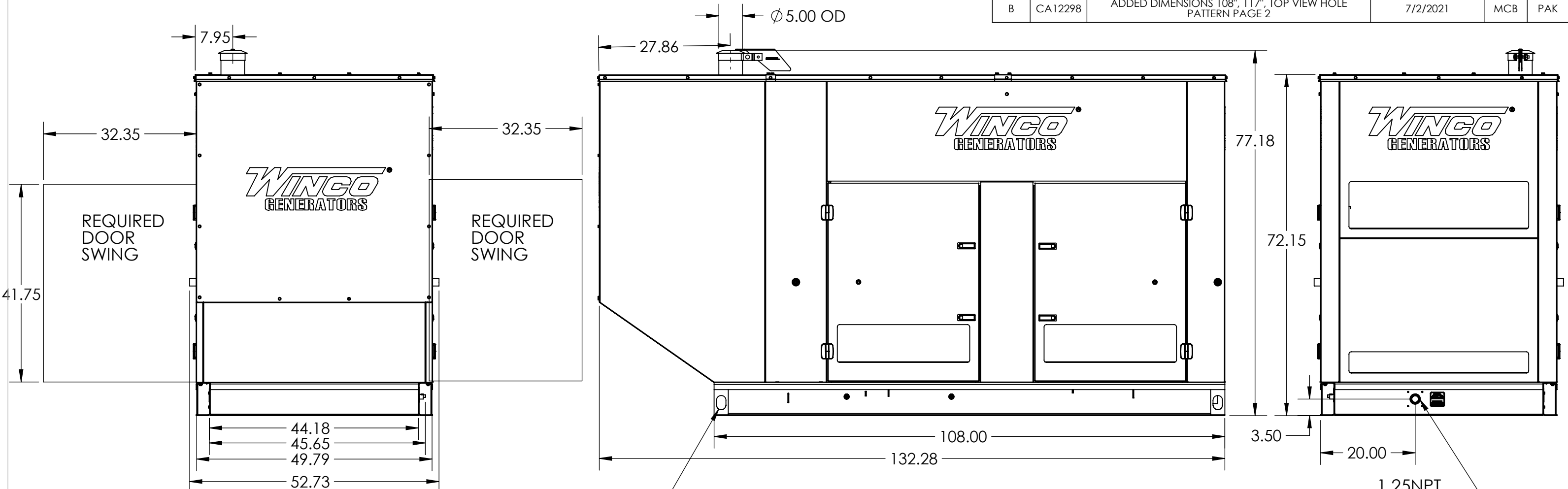


0-520

REVISIONS					
REV.	IRN	DESCRIPTION	DATE	BY	APP'D
A	C4728	ORIGINAL	9/29/17	BWZ	DRC
B	CA12298	ADDED DIMENSIONS 108", 117", TOP VIEW HOLE PATTERN PAGE 2	7/2/2021	MCB	PAK

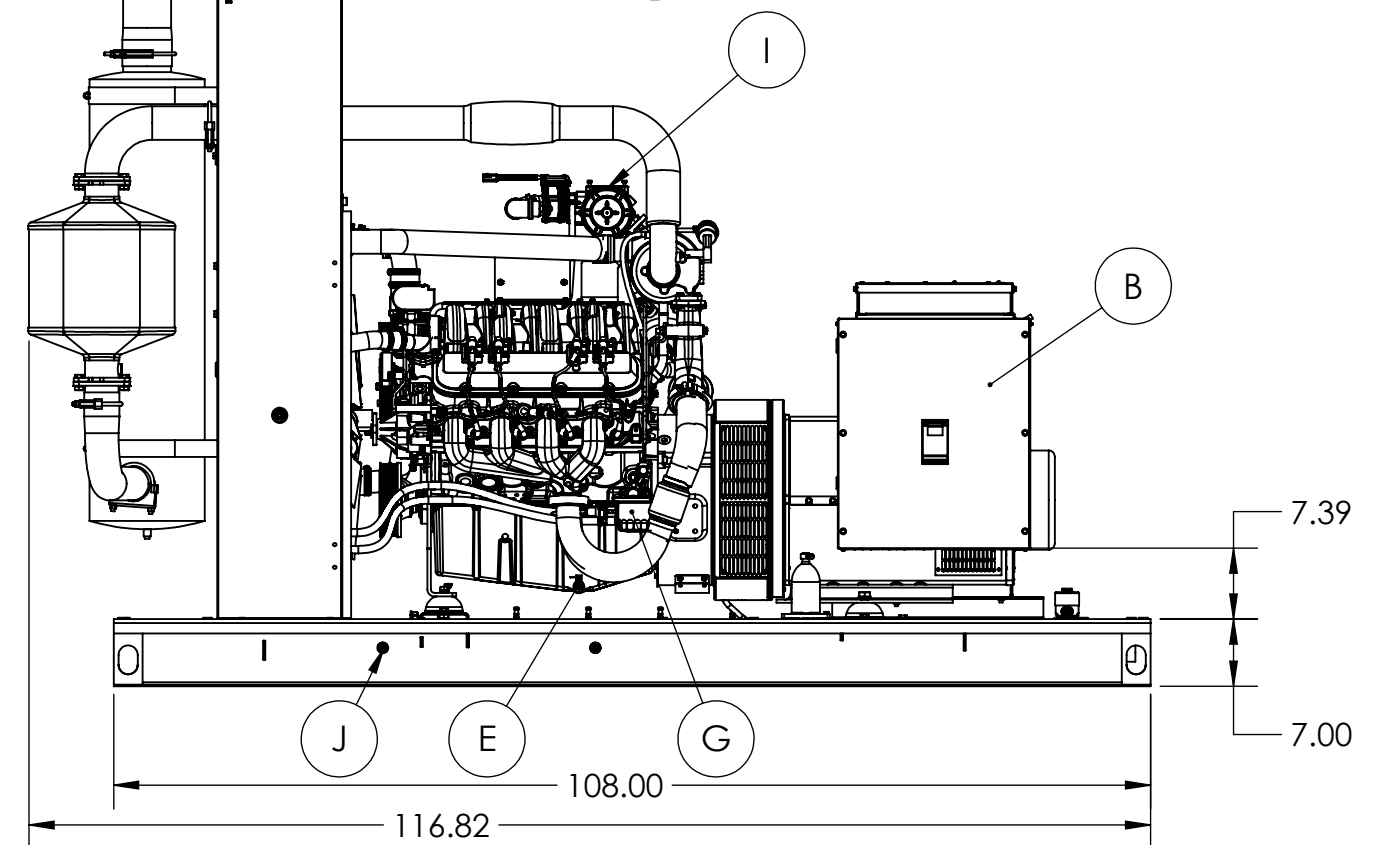
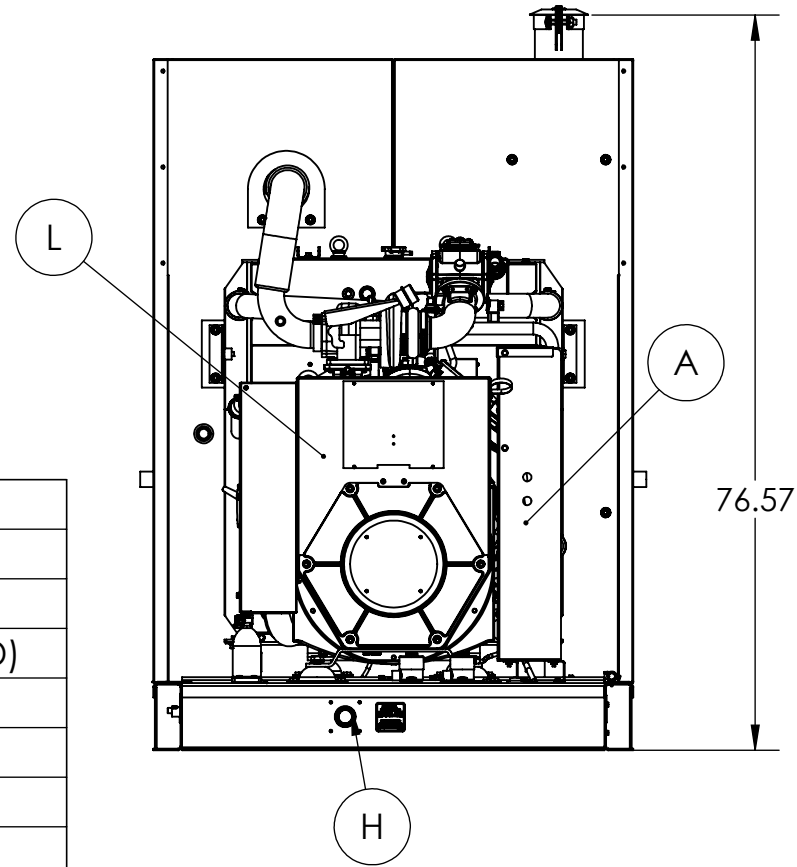
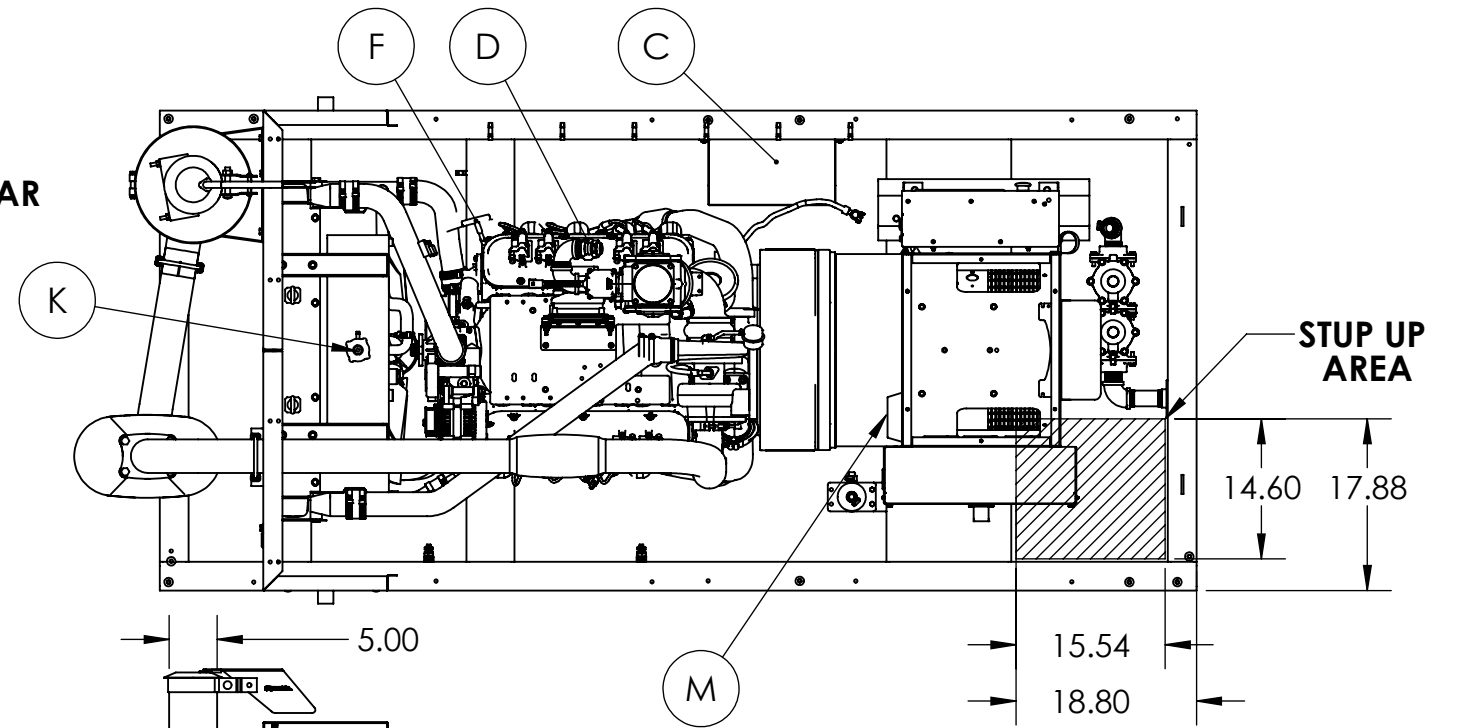
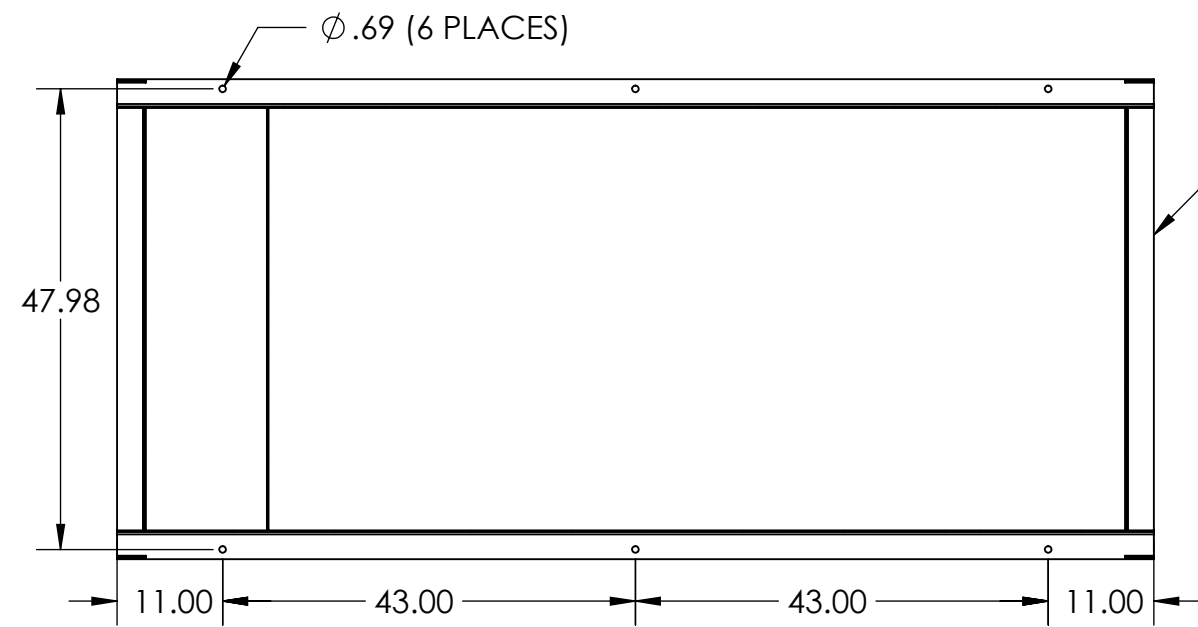


**APPROXIMATE WEIGHT:  
4700 LBS (HOUSED)**

<p>THIS DRAWING CONTAINS PROPRIETARY INFORMATION BELONGING TO WINGCO. UNAUTHORIZED USE IS PROHIBITED.</p> <p>ALL DIMENSIONS INCH</p>	DRAWN BY	DATE	CHK'D BY	DATE	ENG APPR.	DATE
	BWZ	9/15/2017			DRC	2/3/2018
	TOLERANCE:	+/- 0.0625 DECIMAL +/- 1 DEG ANGULAR		TITLE: ULPSS150 OUTLINE DRAWING		
	MODEL:	PSS150/A		PART: O-520 1 of 2		

REVISIONS					
REV.	IRN	DESCRIPTION	DATE	BY	APP'D
A	C4728	ORIGINAL	9/29/17	BWZ	DRC
B	CA12298	ADDED DIMENSIONS 108", 117", TOP VIEW HOLE PATTERN PAGE 2	7/2/2021	MCB	PAK

# TOP VIEW HOLE PATTERN



KEY COMPONENTS	
A	ENGINE CONTROL
B	MAIN LINE CIRCUIT BREAKER
C	GROUP 24 BATTERY (NOT INCLUDED)
D	OIL FILL
E	OIL DRAIN
F	OIL DIPSTICK
G	OIL FILTER
H	FUEL INLET
I	AIR FILTER
J	COOLANT DRAIN
K	COOLANT FILL
L	AVR
M	BATTERY CHARGER

<p>THIS DRAWING CONTAINS PROPRIETARY INFORMATION BELONGING TO WINCO. UNAUTHORIZED USE IS PROHIBITED</p>	DRAWN BY BWZ	DATE 9/15/2017	CHK'D BY	DATE	ENG APPR. DRC	DATE 2/3/2018
	TOLERANCE: +/- 0.25" (UNLESS SPECIFIED)	TITLE: ULPSS150 OUTLINE DRAWING				
	WEIGHT: 4162.668 LBS	PART: O-520 2 of 2				
	MATERIAL:					