

REF #	PART #	DESCRIPTION	QTY
1	1000-1525	FRONT AXLE ASSEMBLY	1
2	1000-1536	REAR AXLE ASSEMBLY	1
5	2000-0530	RP15 TONGUE ASSEMBLY	1
7*	2000-0128	PARTS BAG	1

* Parts bag not pictured

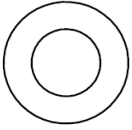
STEP 1

- Open the parts bag and separate the components.

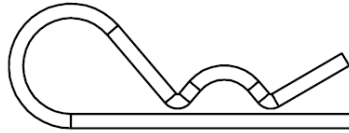
FASTENERS

(not shown in actual size)

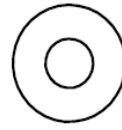
526-000
x 24



97883-001
x 2



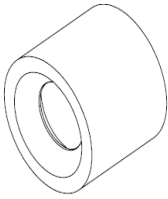
1178-000
x 4



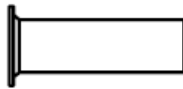
480-000
x 16



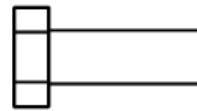
95232-000
x 1



94304-001
x 8



465-000
x 8



458-000
x 16

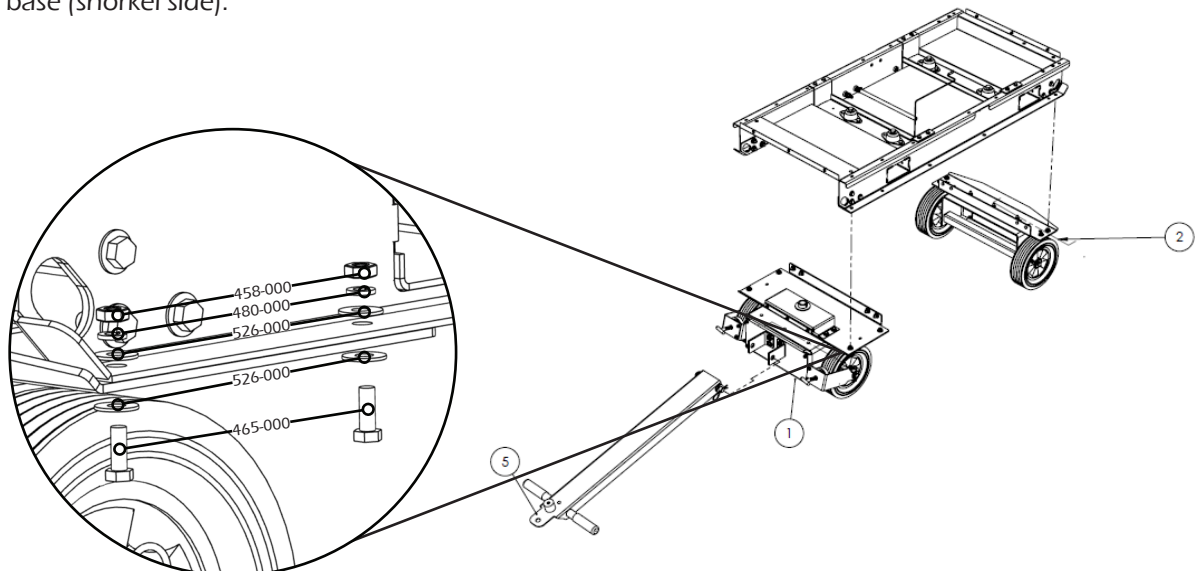


1000-1529
x 1



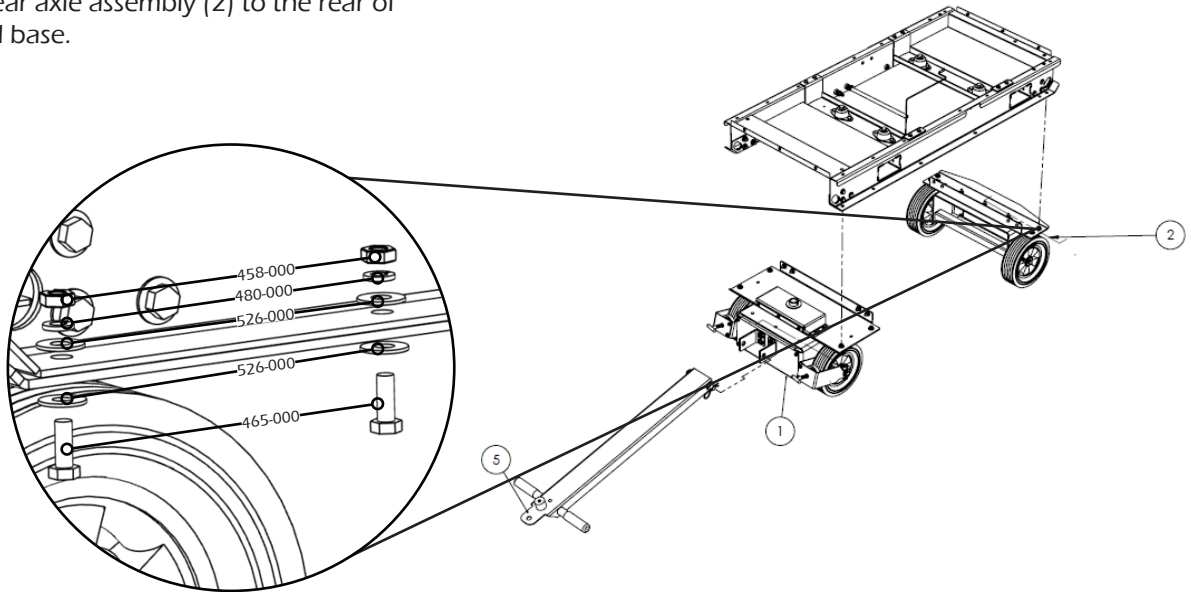
STEP 2

- Attach the front axle assembly (1) to the front of the RP15 skid base (snorkel side).



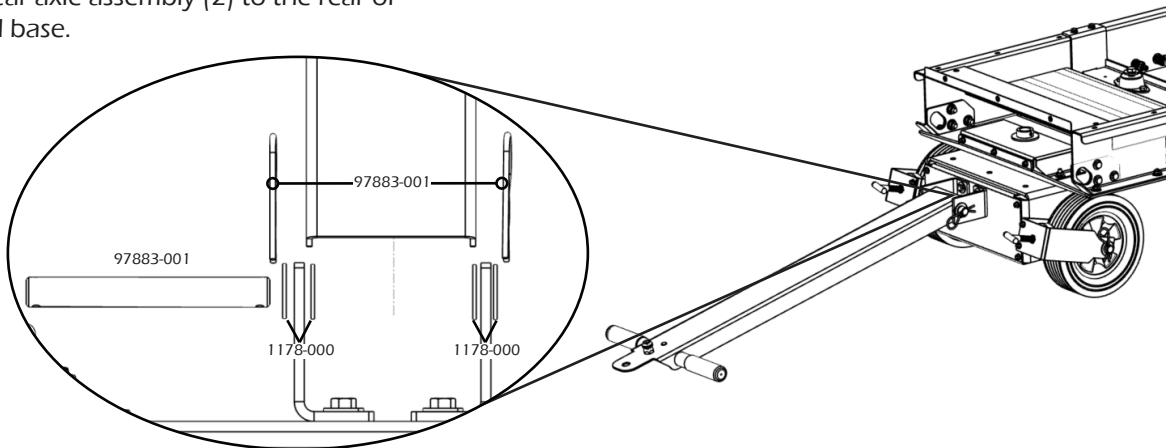
STEP 3

- Attach the rear axle assembly (2) to the rear of the RP15 skid base.



STEP 4

- Attach the rear axle assembly (2) to the rear of the RP15 skid base.



STEP 5

- Attach the door holder to the RP15 unit by removing the middle fasteners and using them to install the door holder.

